



SPINEXPLORE

# SPINEXPO™ SHANGHAI

*PRESENTING THE SPRING/SUMMER 2019 COLLECTIONS*

13-14-15 MARCH 2018

SHANGHAI WORLD EXPO CONVENTION & EXHIBITION CENTRE  
N° 1099 GUOZHAN RD - PUDONG - SHANGHAI

STYLIST: CECILE FEILCHENFELDT - PHOTO: HASSEN BRAHITI





# HUBO

FASHION AND ESSENTIAL COLLECTION

# MASTERY

LUXURY FIBERS AND ITALIAN TECHNOLOGY

**BOOTH NUMBER: F02**

**JIANGSU GTIG HUBO CO., LTD**

江苏国泰汉帛贸易有限公司

16-30F, TOWER B, GUOTAI FINANCIAL PLAZA,  
GANGCHENG ROAD, ZHANGJIAGANG, JIANGSU, CHINA

EMAIL: [INFO@GTIGHL.COM.CN](mailto:INFO@GTIGHL.COM.CN)

SPRING  
SUMMER  
**2019**  
**HUBO**  
YARN COLLECTION



# SPINEXPO™ SPRING/SUMMER 2019

## A COLOUR PROPOSAL OF BALANCING CONTRASTS

A Sensual Future follows on from the "Future Dialogue" discussion held during SPINEXPO™ New York, which focused on how sensuality works as a new design strategy for the future of emotionally driven products, in fashion and home design. A sensual Future is influenced, focused and offers yarns and knitwear direction for the Spring/Summer 2019 inspired by the confused political environment that is a foundation of this century. A Sensual Future embodies how this confusion influences our feelings and reactions, how we are drawn to products that have intimacy and a "feel good" focus.

In this confusion, we confront two major directions. Peaceful, straightforward and harmonious products, with a growing trend towards feminine, elegant designs; and secondly, a rebellion and roughness, using durable materials with conflicting fibres that create texture and colour innovation.

We believe that these two directions have a symbiosis, cohabitating and influencing each other. For this reason, we have isolated our first direction from the others as it stands independently, a new rise of harmonious beiges and white, complemented by faded flower tones. In contrast, metallics are present, but in a soft and subdued way.

# RADIANCE



11-4001 TCX  
BRILLIANT WHITE



14-1305 TCX  
MUSHROOM



11-0601 TCX  
BRIGHT WHITE



16-1103 TCX  
PURE CASHMERE



13-0000 TCX  
MOONBEAM



15-1220 TCX  
LATTE



11-1001 TCX  
WHITE ALYSIUM



16-1516 TCX  
CAMEO BROWN



13-0905 TCX  
BIRCH



13-1012 TCX  
FROSTED ALMOND



A family of soft natural colours fitting all types of fibre. Inspired by cosmetics and clays, the beiges are a story of their own and replace the family of whites as a new neutral direction; whites still stand out, but used in juxtaposition or blends with the beige palette as a "faire valoir". The key is a soft or dry handle. From luxurious fine, but not transparent cashmere and noble fibres to crisp linen and ramie, the yarns have an appearance of simplicity and sophistication. The refinement lies in the construction and finishing, a return to regal elegance and style, with a strong modern influence.



↓ Zhongxin



↓ GTIG Esen



↓ Best Leader

### Yarns & Fibres:

Natural fibres dominate with a focus on well-being. Noble fibres, superfine merino, cool wools, cashmere and cashmere blends, are seen with smooth handles in eco-friendly and natural tones. Carded silk and cottons are reinterpreted into finer gauges then blended with nylon to bring a new level of volume to lightweight yarns. Refreshingly cool and delicate luxury Pima cottons, matt silks and mercerized cottons seen in fine openwork structures. Silky, superfine, filament and softly crushed silky chenille yarns are evident. Ramie and metallics. A soft brightness emerges.

### Knitwear:

Regal elegance, soft tailoring, easy going modern classics, gentle feminine shapes, fluidity in trousers and skirts. Superposition of layers and patchwork of laces, embroidery and fragile edges. Micro weaves and stitches, intarsia in skintight fabrics with the integration of fringe techniques made by advanced knitting techniques. Multi-layers, woven ribbons, pleats and smocking like structures.

**Menswear:** Traditional feminine colours reinvent menswear, fully-fashioned and cut & sew knits mix in different gauges. A play on ribs is seen.



↓ Shilead



↓ Winning



↓ Winning

# IKEBANA



This palette looks for balance, with a sense of exploration.

The inspiration for the softer palette leads to soft but mid-tone pastels, inspired by parchments, with a watery and delicate appearance, which comforts and consoles, in which we see tiny coloured fragments. A wide variety of new pinks with the addition of a soft lilac, provide romance and femininity. The opposite palette brings tones a level stronger with colours fitting fresh linens and new structural blends of natural and man-made fibres. Discreet additions of neps and visual constructions contain the importance of Orchid Pink and Pale Lime Yellow. The palette brings compelling and surprising proposal, showcasing a more interesting perspective in the use of colour.

## **Yarns & Fibres:**

Semi-sheer and silver laminated linens, shiny silks, matt stretch or high shine fluid viscose's are shown. Raffia's in matte and shine bring unexpected surface structures. Natural fibres of cotton and silk move the surface of the fabrics. Tiny sequins and micro coloured beads are spun in high twist superfine fragile textures. Multi-coloured, jaspé and water colour printed effects bring a new softness to knitted fabrics. Nylon elastic, metallic, and luminous materials offer light refracting and iridescent textures.

## **Knitwear:**

Kimono inspired T-shirts. Knitted Inlay techniques are used to recreate floral patterns using gold and silver gauzy yarns blended with natural cotton threads. Quiet sophistication for an ultra-modern look, transparent knits with open side details, plain and beautiful shapes, subtle textures, sheer pleats, crisp folds, crinkling, wrinkles and ribs. Over layers, fragmented, disarranged pieces with metallics, iridescent and transparent structures welcome yarns in constant motion. Milky liquid and glossy surfaces. Metallised knitwear. Fine open work and ultra-light lace patterns, nets and voiles, hyper refined.

**Menswear:** space dyed yarns and textural marls. Clean lines, loose knits with performance stretch. Bold stitches, fully fashioned, mix of gauges, ribs, laser-cut edges and layered muted colours. Plaid checks, contrast ribs, figurative jacquards and discreet tie-dyes.

11-0603 TCX  
PASTEL PARCHMENT



16-4703 TCX  
GHOST GRAY



13-3406 TCX  
ORCHID ICE



12-0520 TCX  
PALE LIME YELLOW



14-3812 TCX  
PASTEL LILAC



18-4215 TCX  
BLUE MIRAGE



12-1212 TCX  
VEILED ROSE



18-3905 TCX  
EXCALIBUR



13-3207 TCX  
CHERRY BLOSSOM



15-3214 TCX  
ORCHID



11-2511 TCX  
SHRINKING VIOLET



19-2620 TCX  
WINTER BLOOM



14-3805 TCX  
IRIS



19-3712 TCX  
NIGHT SHADE



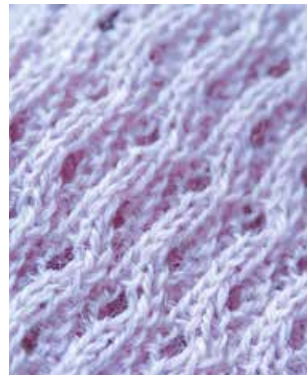
14-5002 TCX  
SILVER



Best Shan



Winning



Xinao

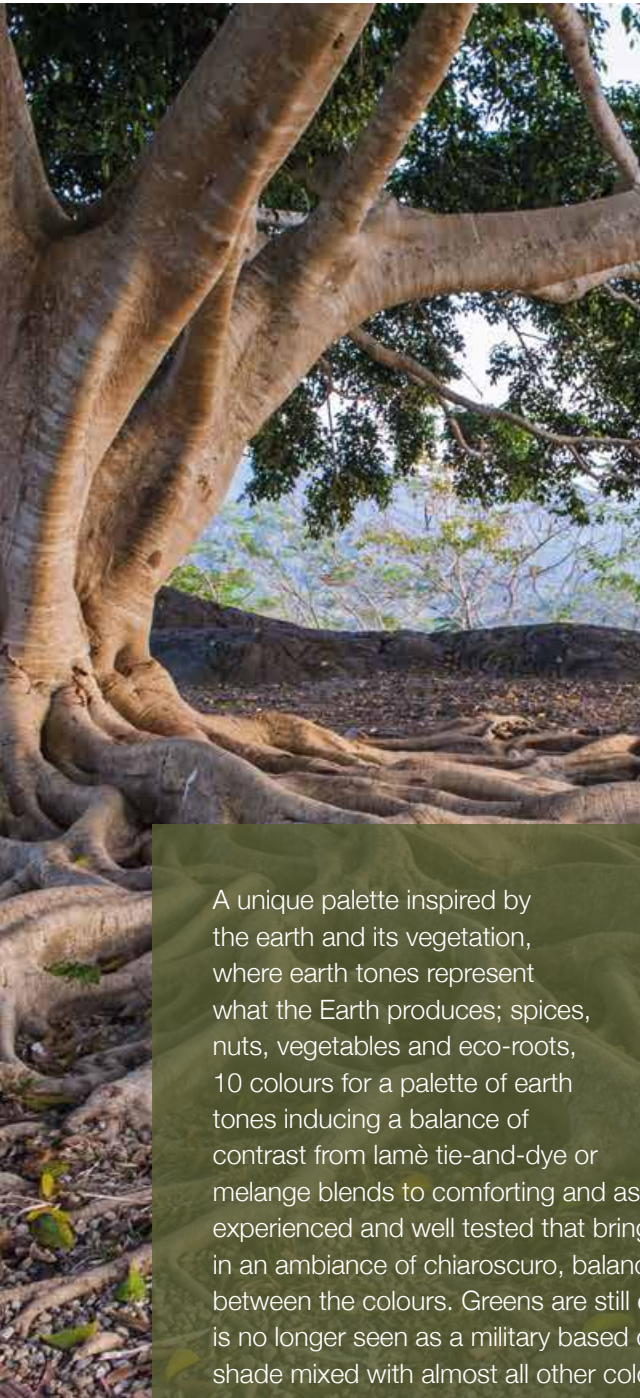


Winning



Zhongxin

# MAHOGANY



A unique palette inspired by the earth and its vegetation, where earth tones represent what the Earth produces; spices, nuts, vegetables and eco-roots, 10 colours for a palette of earth tones inducing a balance of contrast from lamè tie-and-dye or melange blends to comforting and assured, warm, experienced and well tested that bring impactful colours in an ambiance of chiaroscuro, balancing a contrast between the colours. Greens are still evolving, as khaki is no longer seen as a military based colour but as a catalyst shade mixed with almost all other colours. Gold metallic is important to embellish and enhance the direction.

16-1324 TCX  
LARK



17-0115 TCX  
OIL GREEN



19-0823 TCX  
CROCODILE



18-2019 TCX  
GRAPE SHAKE



18-0629 TCX  
LIZARD



18-0228 TCX  
PESTO



19-4205 TCX  
PHANTOM



19-5513 TCX  
DARK GREEN



19-1625 TCX  
DECADENT CHOCOLATE



19-0508 TCX  
PEAT



15-0927 TCX  
PALE GOLD





↓ Zhongxin



↓ Best Shan



↓ Shilead



↓ Winning

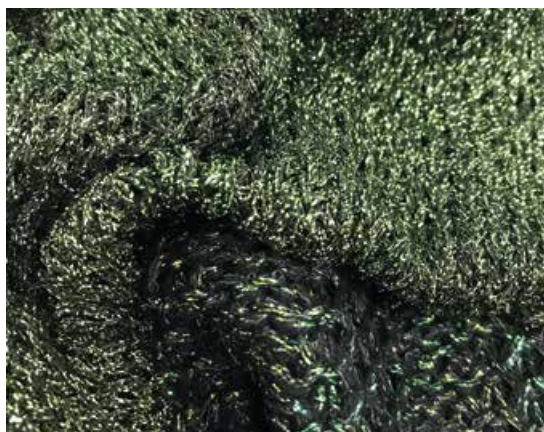
### Yarns & Fibres:

Natural yarns are dominant, with crispy and dry hand feels, matte cottons, high shine viscose, merino wool, silk, blended with Tencel, Polyester and high stretch nylons. All cohabit with fine raffia, cellophane and paper yarns. Shiny and matte effects are seen often in organic plant-dyed palettes. Fibre and stitch constructions with high twist, steel-cored yarns. Stringy thread-like linen and hems coarsely spun with extreme slubs, resulting in unrefined yarns with dry handles, snarled, feathery, straw-like and eyelash finishes. Hemp and wool mix knotted yarns give strength to the knitted structures. Tweedy blends of multi-coloured yarns are mixed with filaments, fragmented, broken, twisted and crumpled. Unfinished, worn and porous surfaces offer natural rustic handles. Floating stitches. Earthy tones are here to stay.

### Knitwear:

safari feel with casual shapes focusing on its tactile nature: open stitches, manipulated structures, clean surface stitches, minimal patterns and wood grain effects. Wicker baskets, striped motifs, raffia weaves with netting structures and open weaves.

Waffles and plated ribs are seen in menswear.

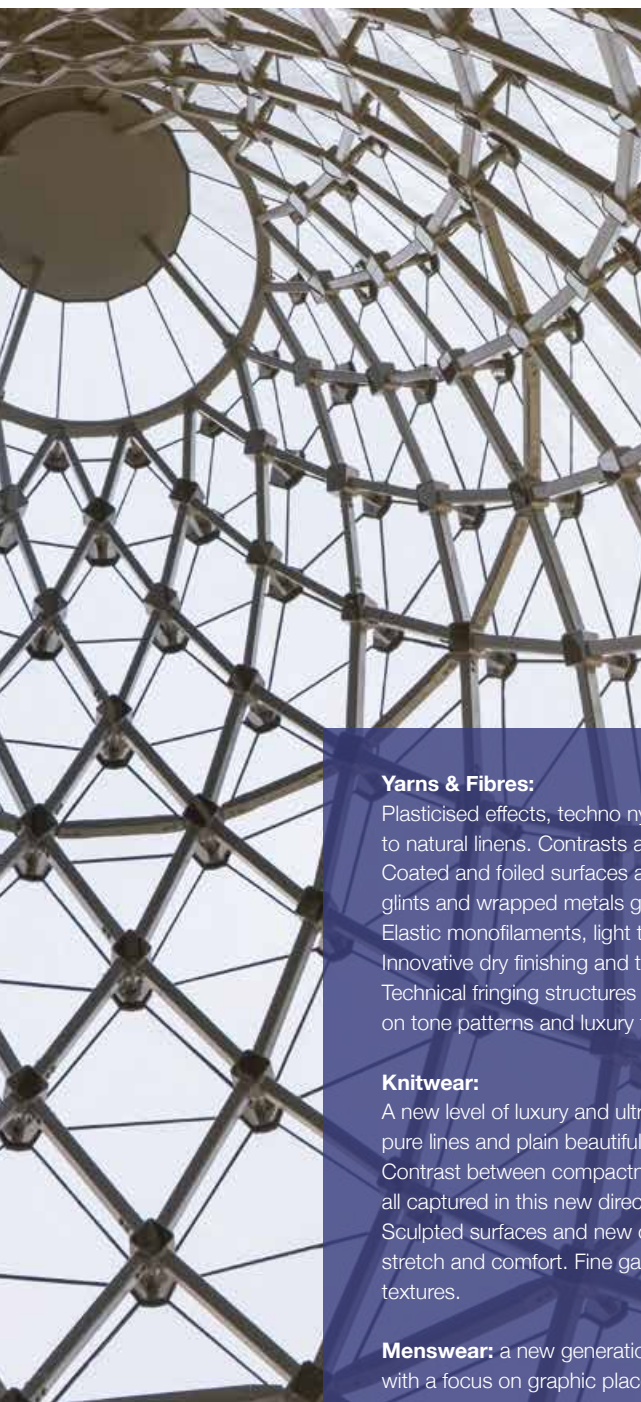


↓ Shilead



↓ Winning

# GEODESIC



This trend speaks of a trial to use colours as an answer to chaotic and multi-directional influences. The first palette is a modern and attractive palette of colours cohabitating to bring light in a direction fitting a more casual, sportive and relaxed but sophisticated environment. Colours are not bright but have a real intensity, with a fog green, a soft turquoise and a tamed yellow, cohabitating with stronger beige and taupes and a chestnut brown metallic. The complementing palette mixes a wide variety of tones; new blues, with four earth-inspired colours. Khaki, making its return, rust, wheat yellow and a clematis blue lightening the palette. A story of contrasts, where we see the two proposals melting together.

## **Yarns & Fibres:**

Plasticised effects, techno nylons, fine cotton and wool blends, matte & shiny viscose next to natural linens. Contrasts are seen between compact and transparent yarns and knitwear. Coated and foiled surfaces are evident. Crumpled and crushed surfaces textures, distorted; glints and wrapped metals give permanent crushing and crumpled effects to the yarns. Elastic monofilaments, light transmitting, subtle sparkle effects, liquid & fluid yarns. Innovative dry finishing and translucent resins. Technical fringing structures use flexible yarns. Natural and synthetic fibres create tone on tone patterns and luxury fibres mix with performance yarns.

## **Knitwear:**

A new level of luxury and ultra-modern looks show a new elegance emerging. Geometric pure lines and plain beautiful shapes capture functionality, effectiveness and endurance. Contrast between compactness and transparency, digital printing and glow-in-the dark are all captured in this new direction. Hand beading, embellishment and embroidery are key. Sculpted surfaces and new cuts of sporty chic natural jersey show freedom of movement, stretch and comfort. Fine gauge knits and sporty classics update using fine understated textures.

**Menswear:** a new generation of wearer sees smart, casual yet sporty pieces showcased with a focus on graphic placement and composition. Ribs and cords, woven inlay unexpectedly juxtaposed. Raw edges, clever cut, candy cane hazy stripes, multi coloured cottons, impalpable mesh and abstract webby structures.

14-4201 TCX  
LUNAR ROCK



17-1109 TCX  
CHINCHILLA



16-0213 TCX  
TEA



19-3951 TCX  
CLEMATIS BLUE



14-0935 TCX  
JOJOBA



18-1142 TCX  
LEATHER BROWN



19-0414 TCX  
FOREST NIGHT



17-0210 TCX  
LODEN FROST



19-4540 TCX  
DEEP LAGOON



14-1038 TCX  
NEW WHEAT



19-4028 TCX  
INSIGNIA BLUE



17-5335 TCX  
SPECTRA GREEN



13-0210 TCX  
FOG GREEN



19-4029 TCX  
NAVY PEONY



16-0836 TCX  
RICH GOLD



UPW by Lucy Spendlove



Winning-Sawada-Shi Kwan

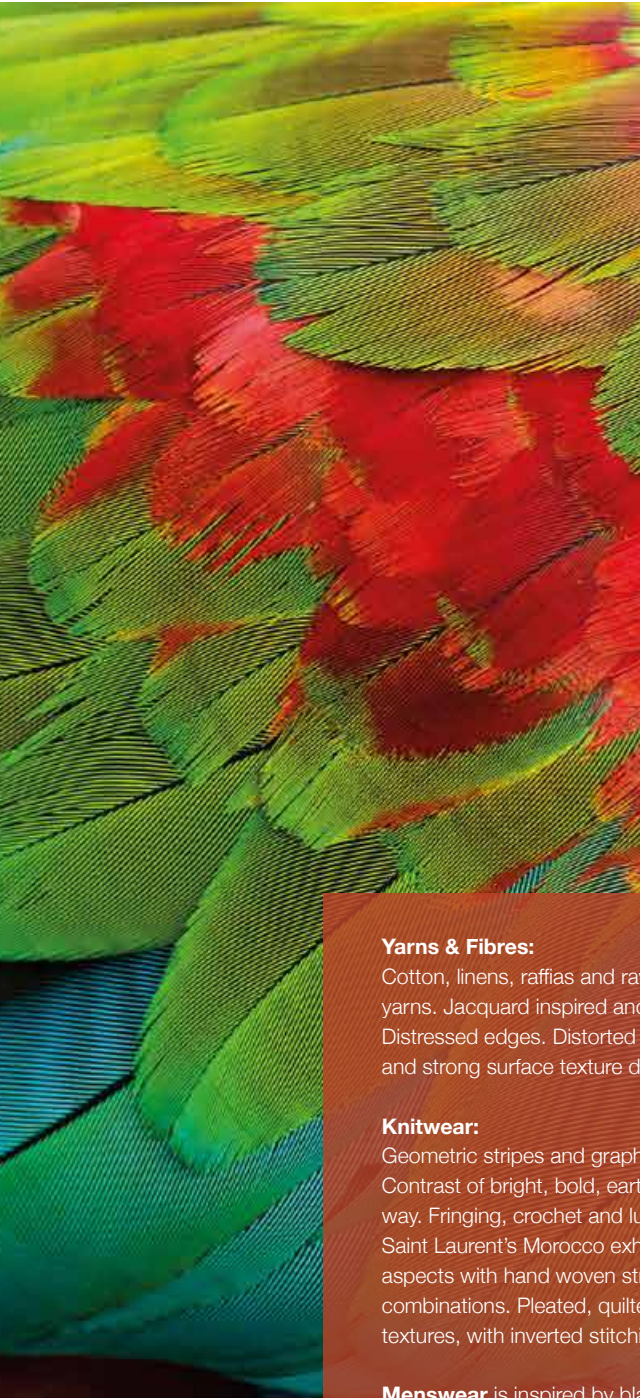


Shilead



Lugang by Steven Oo

# STRELITZIA



A palette of soft and strong colours, very refined, inspired by dried fruits, plants and minerals, both luminescent and natural, to fit summer crisp and silky materials, together with a counter proposal of bright colours reminiscent of Asian and African Tribal textiles. This global palette is making hybrids attractive, either minimalist, or folk-inspired, tempting a new dialogue in propositions. The focus is vibrancy, rhythm, and a more sportive palette than the elegant first palette; but combination exudes mystery.



Sawada

## **Yarns & Fibres:**

Cotton, linens, raffias and raw silks with natural slubs, mini bouclé's and decorated fancy yarns. Jacquard inspired and printed stripe effects, multi-layered and vintage looks. Distressed edges. Distorted constructions and irregular dye effects, macramé braids and strong surface texture dancing.

## **Knitwear:**

Geometric stripes and graphic pattern work seen in lightweight yet powerful jacquards. Contrast of bright, bold, earthy and textured knits create more artisanal pieces in a modern way. Fringing, crochet and luxurious handwork details are seen. In contrast, fitting with Saint Laurent's Morocco exhibition, imperfection made perfect. Wrapped and crinkled aspects with hand woven stripes, knot weaving, and mixtures of different materials in unusual combinations. Pleated, quilted and embroidered fabrics create three-dimensional surface textures, with inverted stitching, feather inserts and long fringes.

**Menswear** is inspired by blanket patterns jacquards. Disco looks, patchwork, geometric patterning and zigzags. Folkloric symbolism and modern folk tale

19-1524 TCX  
OXBLOOD RED



14-0957 TCX  
SPECTRA YELLOW



19-1327 TCX  
ANDORRA



19-3803 TCX  
PLUM KITTEN



16-1429 TCX  
SUNBURN



18-1354 TCX  
BURNT OCHRE



18-1536 TCX  
HOT SAUCE



18-1950 TCX  
JAZZY



19-2033 TCX  
ANEMONE



18-4936 TCX  
FANFARE



19-3933 TCX  
MEDIEVAL BLUE



15-0341 TCX  
PARROT GREEN



19-1716 TCX  
MALVE WINE



18-3518 TCX  
PATRICIAN PURPLE



Best Leader



Sawada, Shi Kwan, Zhongxin



FashionYarn, Shi Kwan



Shi Kwan



# WHAT IS NEW IN THE WORLD OF MERINO WOOL

*A NOT TO BE MISSED YARN, COOL IN SUMMER AND WARM IN WINTER*

## **ESQUEL GROUP**

**“ETHICS, ENVIRONMENT, EDUCATION,  
EXCELLENCE & EXPLORATION”**

The ESQUEL Group is proposing a new yarn made by blending a premium extra-long-staple cotton from their own avant-garde ecological farm with Lindis ultra-fine merino wool, a yarn produced at the Forest Range uplands in New Zealand, in a pure and natural environment where sheep have been bred and farmed for over 150 years.

The blending achieves an ideal balance between softness and warmth. This will allow upmarket brands to differentiate from their competitors. Lindis Ultra fine merino wool is the finest fibre in the world, even finer than cashmere. It ranges between 10.6 to 14.5 microns, with cashmere ranging from 13 to 15.5 and standard wool ranging from 16 to 35 microns. Lindis Merino is one of the best naturally elastic fibres in the world due to its unique helical molecular structure.

It is naturally breathable and hygroscopic, making garments very comfortable to wear, providing thermal retention and a super soft hand-feel resulting in a very precious, luxurious and exclusive product.



ESQUEL GROUP presents a new product conceived around Lindis Wool, the finest non-museled merino wool fibre in the world, finer than pure cashmere - 10.6 – 14.5 micron from New Zealand blended with premium long-staple cotton 60s/2 80% Pima Cotton 20% Lindis Wool

The result is a yarn with excellent elasticity, naturally breathable, super soft with excellent thermal retention, light, comfortable, luxurious and elegant.

[www.esquel.com](http://www.esquel.com)



#### ZHEJIANG ZHONGDING TEXTILE

ZHEJIANG ZHONGDING TEXTILE is committed to the development of high-grade natural fibre yarns and relies on continuous product innovation, stable quality assurance and



excellent after sales services. It ranges in China top 500 enterprises for competitiveness in textile in the Chinese Textile Industry Association.

#### New this season:

**Modern** - a 50% Mercerized merino wool 50% Cotton – 19.5 micron. Its special processing creates a high-quality yarn with key characteristics featuring: good moisture absorption & sweat transfer, an excellent elasticity, strength, good pilling resistance. The yarn is exquisite, smooth, breathable, skin-friendly and fashionable.

**Cashtouch** - a 100% mercerized superfine merino wool 30Nm/2, 36Nm/3, 48 Nm/2. A super soft and delicate yarn with outstanding elastic strength, a cashmere hand feel and a silk-like lustre.

**Pleasure** - a 100% merino wool 48Nm/2 and 6 Nm/2, 16.5 micron. The product features good moisture absorption and sweat transportation, a good elasticity, and is total easy-care and machine washable.

**Amara** - 70% Mercerized superfine merino wool & 30% silk – 17.5 micron. This yarn has a great hand feel and a good evenness. The silk content brings brightness and shine, making the yarn fashionable and elegant.

[www.zdtextile.cn](http://www.zdtextile.cn)

#### XINAO TEXTILE GROUP DEVELOPING YARNS THAT PROVIDE THE HIGHEST LEVEL OF COMFORT

Merino wool is the ideal choice for the manufacture of base-layers, as it provides breathability, has a natural elasticity, moves with the body irrespective of the type of sporting or leisure activity. It has good Odour Management Control (OMC) properties, because Merino wool absorbs around 30% of its weight in moisture before it feels wet, therefore prolongs the on-set of bacterial growth.

.../...



### New products this season:

**Rattan** – a wrap spun yarn produced by using the latest wrap spinning technology. The yarn is made by wrapping around an 80% ultrafine merino wool core a 20% nylon filament. The yarn has a smooth surface appearance and a high durability. Brace is a second version of this yarn, 90% ultrafine Merino and 10% nylon.

**Skinny** – Unique elastic polyester is used to wrap ultrafine merino to give knitted fabrics an excellent stretch recovery, machine washable in accordance with Woolmark specifications

**Feather** – made from a blend of 60% merino extrafine wool and 40% polypropylene, Feather is a quality yarn durable in weight with a good insulation properties and a smooth and new appearance, available in 1/50 Nm.

To respond to the increasing interest and demand for sustainable clothing, Xinao Textile Group has developed a range of yarns aimed at addressing ethical fashion.

### For circular knitting:

**“Organic”** – 100% extrafine merino wool 1/50 & 1/60 S Nm. The organic range is made from yarns, which have been certified by the Textile Exchange Organisation. They are machine washable in accordance with Woolmark specifications.

**“RWS”** – 100% extrafine merino wool 1/50, 1/60 and 2/72 S Nm. This range of yarns is grown on farms that have achieved the Responsible Wool Standard in accordance with the requirements of the Textile Change.

**“Hope”** – 55% extrafine merino wool – 45% recycled polyester 1/50 S Nm. To make the wool component machine washable no chlorine is used.

### For flat-bed knitting:

**“Eco”** – 100% extrafine Merino wool – 2/30, 2/36, 2/48 S Nm. The yarns have been machine washable treated with a new shrink proofing which does not involve the use of chlorine or other halogens in the process so that no Absorbable Organic Halogens (AOX) are formed, offering a more environmentally friendly solution.

[www.xinaotex.com](http://www.xinaotex.com)



### HAOYE

Haoye define themselves through their flexibility and dedication to customer service. Haoye achieve this through providing both stock service and in-house development, which not only allows for shorter lead times on sampling, but also ensures that its evolving creativity keeps pace with the speed of an ever-changing market. Haoye provides new collections for each season in a versatile and creative way that meets developing trends.

**These collections include:** Total Easy Care, Air Yarn, colourful linen and acrylic blends in addition to many other styles and items.

Since 2006, Haoye has worked closely with Uniqlo on new yarn developments, including a wool-blended yarn with a 0.9D ultrafine acrylic. However, with their commitment to evolution and market pace, Haoye has gone on to create a Total Easy Care Merino yarn, which has been an on-going collaboration with Uniqlo since 2010. The yarn is 100% natural, has excellent temperature and moisture management qualities, has anti shrinkage and anti-fading qualities and is a Total Easy Care product. Up-to-now this product is recognized and used widely within the international markets.

In their Easy care series they offer pure TEC wool and TEC Wool/acrylic with stock supported service in 2/30nm and 2/48nm.





STRATEGY,  
INNOVATION,  
RESPECT  
FOR THE  
ENVIRONMENT

WHAT ARE  
THE EXHIBITORS  
SAYING?

## **CONSINEE GROUP**

### ***China's First Smart factory in Cashmere Yarn Industry***

Since its foundation in 1999, Consinee Group has purchased over 40 of the latest and most advanced Italian automatic production lines and has recently integrated the dyeing and spinning of woollen, worsted, semi-worsted and fancy yarns into its operations. With an annual capacity of more than 5000 tons, Consinee Group is regarded as the leading enterprise in the high-quality cashmere yarn industry, in both China and the rest of the world.



Despite Consinee Group acting as an industry leader, it is not merely limited to this goal and recognises a need to be ever evolving and better able to adapt to the needs of an ever-changing market. Like other traditional industries, the textile industry is labor intensive, and Consinee is experiencing the challenges associated with growing economies, increased commitment to workers living standards and providing fair and competitive wages.

The mobility and activity of the current labour market seem to be receding, but conversely, the demand for labour is still increasing. In the future, Consinee

group sees that they may not be able to recruit an adequate workforce, even though compensation and welfare standards are rising. So it is now inevitable to innovate spinning facilities and equipment to join a revolution in 'smart' manufacturing, something Consinee has already committed to.

The main construction of Consinee's "smart" factory started earlier this year, with ten 'smart' production lines being imported directly from Italy. The very first "smart" factory in the Chinese cashmere spinning industry is expected to go into operation by the end of 2018. It will combine 'smart' production, packing and warehouse management systems. All this development will substantially replace human workers for automatic and digital operations.

To some extent, the smart factory could be called an unmanned factory, one without lights on! Labour saving is only one advantage, next to many other cost-saving benefits. More importantly, the intelligent operation will help to improve the product quality and maintain the production accuracy to avoid deviations as an outcome of manual operations.

The realisation of 'smart' manufacturing depends on cognitively talented workers rather than manual workers, bringing a higher demand for technically and well-educated talent in the staff. Consinee Group, therefore, is determined to upgrade the staff team and build a high-competence employee team that can be adapted to an intelligent production system.

'Smart' production lines will save labour cost and improve production process efficiency. For example, to produce 1 kilo of yarn, it will reduce energy costs by 25% and labour cost by 80%; it will raise production efficiency by 35%, by sharply reducing production lead time from 35 days to 25 days. Also, 'smart' production accelerates the process of information management in the production procedure.



To coordinate the 'smart' manufacturing system with standard information systems, Consinee Group has applied a more efficient ERP operating system, connecting production with stock and sales departments. Therefore, through this ERP system, all the information can be flowed and shared in real time, applying error-proofing methods, intelligent scheduling and logistics optimisation technology, a smart system is formed, and its ultimate goal is to realise the intelligence of production, logistics and sales.



This so-called Industry 4.0 trend, to the extreme, is to build "unmanned factories". The whole manufacturing, industry chain and intermediate links are connected so tightly as to minimise waste and maximise efficiency. Taking the lead to bring intelligent technology, Consinee Group intends to become the leader of the 'smart' textile industry in China.

## UPW

### S/S 2019 "Feeling good is the key"

The UPW Spring 2019 collection includes yarns that look after the environment (Eco group), yarns which look after the wearer (Wellness group), and yarns, which have a more specially crafted aspect (Unique group).



These new yarns sit alongside the core cotton, silk and linen blended qualities. This season, UPW features lots of new finer smooth yarns, tiny textures like crepe and irregular slubs and refined colour-effects. Along with upgraded fibres, all sourced responsibly, the collection has a focus on marketing messages to help the retailer engage with the consumer.

#### Healthy yarns

- **Spa** – a wellness yarn influenced by the cosmetic industry, using a seaweed-based fibre with cotton.
- **Therapy** – utilising the well-being properties of copper.

#### Natural Dyes (safe for the skin)

All dyestuffs used in UPW yarns are certified as safe, the UPW collection team found that natural dyes (such as vegetable dyes) can be problematic to achieve commercial colourfastness

and metallic mordents are required, which are not good for the skin. So natural dyes are often not as caring as they sound, which is why UPW went down the undyed route for last fall.

#### Traceability (farm to consumer for vertical companies)

Traceability will mainly kick-in for UPW for the next FW collection in June, with a few new initiatives. For this spring collection UPW, of course, trace everything, but to be genuinely certified traceable then the paper-trail needs to be complete, not just the intention. Creative, inspirational yarns that have Eco credentials.

- **ReEco** – new core yarn using recycled cotton and recycled polyester.
- **Zen** – textured yarn using recycled cotton and recycled polyester.
- **Sensual** – sustainable yarn using organic cotton, FSC viscose and energy-saving Sorona.
- **Sensus** – stretch version of Sorona, FSC viscose and Modal, which are all sustainable fibres.
- **Delta-9** – a raw hemp/cupro blend, a hemp base sustainable product. Hemp is a high yield natural crop which takes 50% less water than cotton to produce.
- **Jute** – a rustic yet soft yarn using recycled cotton, and eco-friendly Gracell™.
- **Ultimate Chine** – a colour-effect yarn using organic cotton.

UPW would like to work around the idea of natural fibres, such as silks, linens, ramies, superfine merinos and special cotton that can also work in this group. UPW is proud to upgrade superfine cotton to SUPIMA® covering several qualities, including:

- **Eden** – SUPIMA / cashmere.
- **Ether**  
A 2/80Nm SUPIMA/superfine merino.
- **Elegant**  
A 2/60Nm SUPIMA/superfine merino.
- **Caress**  
A SUPIMS/superfine merino chenille.
- **Nouvelle Fine**  
BCI cotton/cashmere.

#### Innovative/future forward yarns

(from functionality to sustainability)

- Intelligent future yarns that are sustainable
- Sensual, Sensus, Delta-9 and Jute yarns above.
- Responsible, innovative yarns

## YARNS & COLORS

### Relying on market trends and moving to eco-products

Yarns & Colors are continually studying market trends and both searching and forecasting the latest shifts in fashion. Their fashion forecasting results are based on first-hand data collected from worldwide high-end fashion customers. After processing this seasonal data, they have defined four segments for the current market and translate these into the company's seasonal collection focuses.





By using data analysis and smart production, Yarns & Colors can provide faster reaction time, shorter production time, reduced inventory and ability to receive and make use of customer feedback genuinely.

- Firstly, the 'Snowy' family of yarns remains as Y&C's core yarn. This article has a large colour card, and a wide range is held as stock service.
- Secondly, the new dyeing skill for natural wash sustainable products. This dyeing technique creates a vintage look product and is available in a broad range colour palette.
- The third is Indigo linen dyed product. YARNS & COLORS lead the way with this product type and are presenting more amazing colour cards and stitches to highlight the indigo and vintage story to the visitors this season.
- Their last group this season is their fancy yarn collection. They are presenting a new concept of reflective and glow in the dark yarns, superfine velvets and superfine knot yarns this season.

All of these yarns are to offer designers fresh and inspirational ideas, allowing them to push their products forward.

Yarns & Colors strive to lead the market with the concept of diversified products & prompt service. They aim to be one of best knitting yarn and product suppliers among the global knitting industry.

**Yarns & Colors are also proud to launch two of their latest eco products:**

PAPER YARN is produced from natural fibres of Manila hemp (Abaca); which is harvested every 3-8 months for 10 years. The Manila hemp is refined then produced into thin sheets of paper later split into narrow tapes to be converted into Hemp Paper Yarn. It is an environmentally friendly biodegradable material. PAPER YARN is exceptionally light. The high porosity and other natural characteristics give the yarn qualities such as natural coolness and heat retention, high moisture absorption, quick drying and deodorising.

**Features of PAPER YARN:**

1. Extremely lightweight (weight ratio higher than cotton yarn)
2. Excellent breathability (microporous structure)
3. Natural antibacterial function preventing odour and minimising allergy reaction
4. Heat insulation and retention characteristics suitable for both hot and cold weather
5. Natural fibres, minimal fluffs, ideal for sensitive skin
6. Natural UV Protection blocks out up to 98% of UV
7. Twice the water absorption ability, when compares with cotton. Making your skin feel dry and comfortable at all times.
8. Washable like natural cotton and hemp.

**The second one is TOMICA.**

'Natural Wash' is a new technique in dyeing processes. All the dyeing materials are completely ECO and offer a new concept of vintage effects for knitwear. The product can also be recycled. Through Yarns & Colors' commitment to sustainability from design through to

production, they have been awarded Intertek's Green Leaf Mark.

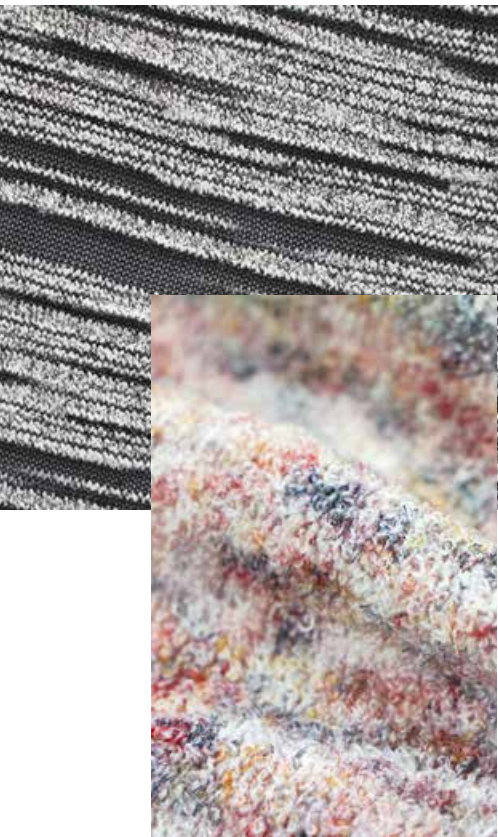
**GTIG HUBO**

***Fast delivery and quick reaction***

JIANGSU GTIG HUBO is a member of the GTIG Group and a worldwide leading yarn supplier. Their broad range of yarns includes Worsted Yarn, Semi-Worsted Yarn, Fancy Yarn, Cotton Yarn and Woolen Yarn. Fast delivery and quick turnaround is a large part of their global strategy and strength. GTIG has set up their international design office in Hong Kong working with global designers on new yarns developments through to garment design.

As a socially responsible company, they are committed to bringing sustainable developments and environmental protection within their product range. Strictly checking operations from raw material, spinning, to delivery,





GTIC HUBO has attained GRS (Global Recycle Standard) and OCS (Organic Content Standard) certifications.

This season they will be promoting an eco-aware book using BCI cotton, organic and recycled elements.

Besides classic BCI cotton yarn, they will use marl, mélange, space dye and slub to get different colour effects.

For the organic series they will blend natural fibres, linen and silk to make a high-end collection with elegant appearance; recycled fibre will mix with shiny & colourful metallic and multi-colour neps to give the yarn a delicate look.

**For this Spring/Summer 2019 season they have four directional new trends to present:**

**Summer Haze** – Focusing on sheer yarns with a feminine sensibility, gauzy tissue-like hand feels, subtle shimmer surfaces through irregular yarn sizes and extreme thick & thin effects.

**Surface** – Textural surfaces are key and range from glossy sheer shimmer marls, fine gauge linen flecks, extremely thick and thin effects through to colour change tapes and natural linen marls.

**Clean Lines** - Yarns are sporty and range from compact nylons with sleek finishes and marl effects, sheer filament yarns through to binding techniques, towel surfaces, and feather tape edges.

**In Bloom** – Using vibrant springtime colours to create new colour combinations, yarns range from gradient colour change and spray dye effects, metallic rainbow chains to novelty metallic streaks and subtle sequin shimmers.

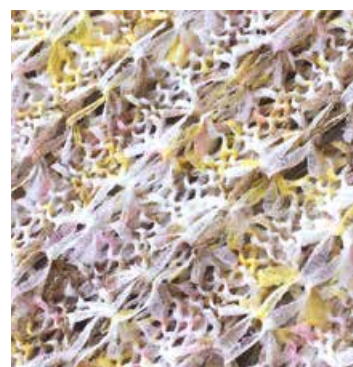
Their two key promotional lines — HUBO™ and MASTERY™, are aiming to meet the various customer needs for different markets. HUBO™ yarn collections is an integration of seasonal trends and materials, and their consolidated manufacturing experience translates to endless innovative products in different categories. MASTERY™ yarn collection is a combination of the latest Italian spinning technology, and a more extensive use of colours & natural fibres brings a unique and luxury collection of high-end yarns and concept.

**BEST SHAN**  
*Specialised in chenille and sequins yarns*

Best Shan is an exclusive Taiwanese Investment Enterprise with manufacturing plants in Shanghai, China. The company has always been dedicated to innovation and development of fancy yarns.

Best Shan offers a diverse range of yarns for Spring/Summer 2019, which include superfine chenille yarns and other yarns with counts reaching 1/32~1/18NM.

New raw materials have a particular focus this season, using various kinds of natural plants and organic, eco-frien-



dly fibres, such as blending ultra-fine sequins with organic cotton, and Net tape yarns cut into a wider range of widths.

**XINFANG GROUP**  
*Associating with hilaturas ferre for recycled cotton*

Jiangsu Xinfang Science & Technology Group has been committed to the research, development and production manufacturing of the textile industry since it was established in 2005.



Xinfang's main products are mostly fancy, semi-worsted and woolen yarns.

There is a growing market demand for eco-friendly products, and as a socially responsible company, Xinfang Group is actively striving to provide customers with a variety of functional qualities, together with the development and production of diversified products, such as environmental protection, health and sustainable developments. All kinds of functional fibres and yarns are organically combined, so that the yarn has good function of moisture absorption and sweat releasing, anti-bacterial, temperature control, health care, and flame retardant safety.



Xinfang has been certified by GRS for the past 8 years and are faced with the dilemma presented by market demand for recycled products where there is always a shortage of stock and late delivery, as no company dares to keep too much stock in hand.

Xinfang takes the challenge to be the first company to hold an extensive inventory of recycled cotton. In the coming spring and summer season, Xinfang will work closely with HILATURAS FERRE. HILATURAS FERRE is a certified supplier of recycled cotton, and develop and provide various kinds of recycled cotton blended products,

such as loops & T/T yarn, covered yarn, wrapped yarn, sarry yarn, lily & tape yarn. By doing so, Xinfang hopes to provide their clients with recycled cotton products in a vibrant colour palette and with a fast delivery service, to really achieve a perfect combination of environmental protection and fast fashion.

For the coming season, Xinfang will launch three collection directions: eco-friendly yarns, soft & cosy yarns, and chunky yarns with rich colours

### SHILEAD

#### *A model in environmental friendly innovations*

By using high-grade technology and techniques to establish a systematic quality management system in accordance with international quality standards, the company has gradually developed a professional enterprise putting its efforts on environmental protection.

Significant investment is being put into R & D in order to reduce and eliminate pollutants released into the environment during dyeing processes. Shilead is the first group of enterprises, which



has passed the OE and GOTS certifications of organic cotton, as well as the GRS certification for globally regenerated fibre.

Shilead is also the first group of enterprises who have developed sustainable products by using organic and recycle fibres in China.

Shilead uses mainly eco-friendly fibres in their new collection. Tencel and natural luxury fibre-spun silk, added with a new bimolecular composition: Sorona, a biological environmentally friendly fibre with a good retention property. It transforms the natural and environmentally friendly fabric into a new luxurious appearance.

Shilead has also developed a series of fancy yarns by using eco-friendly and recycled fibres.

The new yarn - QIS-XLD410, 1/52nm, 77% Organic Cotton 23% Polyester, is an organic extra fine cotton with a dry handle and subtle shine. GOTS and Oeko-Tex 100 certified creating an environmentally friendly dyed, sustainable and innovative product.



## AA GLOBAL

### *Targeting environmental protection*

AA Global started in 1989 with “sustainable operation”, “environmental protection” and “energy saving” being the core values of the company.

This insistence is not only applied to our factory's energy saving and environment afforestation but also utilized in the development and manufacturing of fancy yarns.

For mass production products, we have purchased recycle material, especially recycle polyester. This material is made of PET bottles; it not only reduces environment pollution caused by bottles consumption overly, but also cuts the demand of petroleum. Besides, it also decreases CO<sub>2</sub> emission and energy consumption.



AA Global has been an advocate for the benefits of recycle material applied to the trend of fast fashion with brands cooperating with us, raising their awareness of “recycle and reuse” when they purchase products made with recycle material. Recycled product development accounts for 30% of our production and our goal is to 60% by 2020, thus helping reduce damage and boost sustainable development.

AA GLOBAL also cooperated with domestic suppliers to launch an artificial raffia called “YAFIT, a yarn protected by international patents.

An eco-friendly material, its characteristics are to degraded easily, have a strong breathability and sweat absorb, is light weight with no feather, and it is suitable for making varieties of knitting fabric. Along with YAFIT, we introduce a paper yarn called “WASHI”, extracted from Abaca plants. The finished goods made from this material can be resolved easily, and this product is not harmful to the environment. It bears an excellent warming, has deodorant properties, cool feeling and good sweat absorption and is anti-bacteria.

We have built reliable and long-term relationship with well-known brands and knitting factories such as Free People, A&F, MUJI, Uniqlo, COS, Massimo Dutti, M&S, GAP, ZARA and H&M. Expanding foreign markets aggressively by cooperating with more brands makes AA GLOBAL yarn collection large and diverse to propose to customers and fulfil their requirements. We also take social responsibility for university and supply from Nottingham University, UK and Dong Hwa University China with yarns to make their portfolio. Besides, we also offer the student from Fu Jen Catholic University, Shin Chien University and Sue-Te University an intern job to make them familiar with the whole industry. This inspires our RD department creation and innovation via frequent interaction between designers and students.

The theme in this year is mysterious place exploration. We will guide you to explore the unknown field on earth.

The first station is the Mexico desert; many cactuses grown there were our inspiration of structured fancy yarn. The second station is romantic Greece. Reflecting waterfronts are like the flowing skirt of a young girl, decorated with sparkly yarn on the bottom.

The third station is the mysterious Amazon, in the tropical rainforest with full sunshine, blooming flowers and tangled plant grown all over the place, and it stretched cirrus and bloomed flowers beauteous. This becomes plenty of colorful shades in our yarn

development. The final destination is Spain, football and bullfighting are symbolic sports of Spain with enthusiastic and energetic. Players sweat on the field, which display enthusiasm and optimism of Spanish. When transferring these features with Spanish style to our yarns, it shows more varieties of yarn in terms of highly elastic plain yarn.



## HAOLI

### *A sino german corporation unique in the cashmere business*

Hebei Highland Group is the only Sino-German JV Corp in cashmere business industry that established the full industry chain from high-quality cashmere goats breeding, carding, dyeing, spinning, knitting to brand management in China

Haoli's products never use the short and thick cashmere produced after carding, only the highest quality materials, to create high-end products. They use organic, environmentally friendly and pollution free dyestuff imported from Germany and Switzerland which not only keeps cashmere soft and comfortable but also is conform to the long-term interest of ecological development.

Highland Group is an active participant in social development and responsibility undertaking to promote education development and actively takes part in university-industry cooperation such as CAS, CAAS, CAU, NAU, HAU, IMU, IMAU, JAU and other universities and scientific research institutions.



The union realize many scientific achievement transformations and combine scientific breeding methods to breed high-quality cashmere goats able to produce cashmere material length in 45mm and fine in 14um, fundamentally improving the cashmere quality.

We changed graze way which was harm for the environment into large-scale operation captivity way and combine breeding base and farm breeding. We also provide breeding goats to farmers gratis and contribute to modern sheepfold to help low-income households to overcome poverty.

We do not only protect the environment but also improve the farmers' income and promote the regional economic development as well.

From March 2017, Haoli Tech started cooperation with George Brummell the iconic figure of fashion, royal private bespoke tailor who also service George HW Bush the former president of USA. George Brummell Bespoke Tailors of London specialize in bespoke suits, overcoats, blazers, field-sports clothing/suits, wedding wear, and other formal attire for all special occasions, including customised uniforms. Besides George Brummell, the high-class cashmere fabric from Haoli was used by famous Italian brand Zegna. The original intention of Zegna was based on high quality fabric. The cooperation of Highland and Zegna indicate the reliance from top brand of the world, also playing a prelude to the blossom of cashmere tailored suit and overcoat.

Besides own brand operation, we are also a high grade OEM and ODM supplier of many famous brands in cashmere industry. Our brands focus on the domestic market and European market.

Many other cashmere players purchase materials from various pasturing areas and have difficulty on controlling the quality. We constructed our own goat farms in Heibei and Shaanxi province, growing Alfalfa and Astragalus adsurgens. One of the Group branch Heibei Fumin Cashmere Goats Fine Breeding is a leading enterprise for agriculture industrialization of China. Fumin established large breeding base and cooperate with scientist from CAS, CAAS, CAU, breeding particular cashmere goats which can produce cashmere material length in 45mm and fine in 14um, combining Shaanxi White goats and high-quality cashmere goats from Alxa in Inner Mongolia.

We imported 70 STOLL computerized flat knitting machines from Germany for the production of knitwear to keep high quality and efficiency. With 10 years of experience in production we can guarantee quick prototype producing, strong production capacity and stable delivery time.

## GALAXY

***Shanghai Galaxy Metallic Yarn specialize in various kinds of high quality metallic yarns, with now over 5000 types of metallic yarns available, that can be used for embroidery, sewing, denim, flat knitting, circular knitting and underwear knitting.***

We have the thinnest/softest yarns as well as the thickest yarns in the world, and the most popular yarns in Europe are also available.

Our engineers have the ability to develop new metallic yarns by themselves and /or in line with our customers' requests.



There're THREE kinds of Metallic yarns that have been developed for the coming season

Reflective Yarn is made of 110-cut reflective film twist with various core yarns. Function 1: reflective better with a flashlight; Function 2: It is more beautiful and new to use for stage and special fabric. It is inspired by the trendy lifestyle, as more people focus on exercise and most of office staffs exercise in the evening. It is safer to wear dresses made of reflective yarn, which have a white reflective effect under the lights. RLF yarn combined fashion with function, and will become a new hot spot for textile accessories.

Fancy Yarn: in order to make the property of metallic yarns more perfect, and make it an essential element for various fabrics, fancy yarn is developed, very soft and skin friendly. It can be dyed in all kinds of ways according to the customers' requests.

Super fine & Super soft Mat Yarn With the increasingly sophisticated requirements on sense of colors, luxury without exaggeration, beauty is pursued by most people, this is why we have developed this type of products. Besides, Lines of Fabric with Elegant mat yarn looks softer, which show luxury low-key version perfectly.



## HUASHENG

***As a competitive international yarn supplier, Huasheng (GTHS) is committed to become an integrated supply chain service provider to serve international garment brands, retails and large traders.***

Our yarn department is confident to offer the following strength:

1. Strong R&D department and systematic stock warehouse able to satisfy customers' daily yarn research effectively;
2. Responsible merchandiser QC teams make sure that bulk production goes well for quality standard and delivery;
3. Varieties of yarn products with different price range fitting different customers' requirements.

Inspired by the dry desert landscapes, our SS19 collection would return to origin. Surface texture of the desert landscape inspires an understated approach to beauty and design. Series of cotton blends tapes, micro loops, even the popcorn and slub yarns, recall the rustic texture of the dry landscape. Linen blends, as the symbol of natural fiber in wide range gauges, are there for good. We built a "TRIBE" board to show our competitive bulk collection.

Tribe reminds us of totem, pattern, ritual, and handicrafts, which inspire the Knitting jacquards in contrast bright trend colors, patterns in different combination

of stitches, even the delicate variation of the yarn texture. Knot and crochet, as a traditional handicraft, also plays an important role in this theme.

In brief, this topic is aimed to give designers more inspiration, no matter yarns or stitches.





## **TIANHE**

***Tianhe Printing and Dyeing is primarily focused in two product areas; special dyeing yarn and digital jet printing on cotton fabric, with their major strength being the innovation of regular yarns by using the latest dyeing skills to create new special yarns.***

Apart from regular yarns, Tianhe also provide space dyed yarns, mercerized wool anti-shrinkage yarns, mercerized cotton yarns, spray transitional yarns, colored yarns, wave dye colored yarns, yarn printing and computer positioning yarn.

Tianhe have amassed the worlds largest special dyed color library, with more than 10000 colors for designers to freely choose from. This service is regularly used by top brands including Armani, GAP, Zara, CK, H&M, ONLY, Vero Moda, Edgar, Smith Barney, and Uniqlo.

Tianhe's special dyeing skills can be applied to all fiber materials; including cotton, linen, wool, acrylic, polyester, silk, filament, staple fiber and single thread yarns. Tianhe currently have a production capacity of 3000 tons.

In addition to standard dyeing excellence, Tianhe have a variety of specialized skills including fancy spray and half side dyeing.

Fancy spray is based on a traditional fancy dyeing process, using computer-positioning technology to spray several segmented colors on one thread of yarn. After knitting, the yarn presents exquisite natural patterns.

Half side dyeing is the latest dyeing process, a yarn can be dyed half side with different colors in order to bring up colourful effects, which is a breakthrough in the dyeing industry as it breaks the limit on the half side dyeing on single colors as it was before.

In addition to dyeing, Tianhe also specialize in the development of functional yarns and hi-tech yarn additives to innovate functionalities such as; waterproofing, oil dispersal, anti-fouling, anti-bacterial, infrared heat storage, flame retardancy and antistatic amongst other functional finishes.



## **WELL MAY**

***Shanghai Well May Industrial was established in 2002 as a high-end fancy yarn and industrial yarn producer.***

Well May is the sole international supplier of Yafit Raffia (Rayon Raffia) to the global market, holding patent protected products. Having their own registered brands, Ispie, Lace Raffia and Wellmay, in addition to a creative crafting team in charge of pattern design and promotion, Well May is currently dominating the China domestic market as well as exporting to Europe, Japan, Korea, and North America.

During the past 15 years, under the principle values of Integrity, Practicability and Efficiency, Well May's technical team has developed high-end products, and continuous innovation to their buyers.

## **Introduction of their key products:**

- **Yafit®** yarn (Rayon Raffia) is their patent protected product, 100% made from natural plant fiber (wood cotton) with natural texture, brilliant color, smooth hand feel and knotless. It can be washed, ironed, is biodegradable, anti-static, breathable and has been used by luxury brands in Italy, France as well as Japan
- Ispie brand was established in 2012 to develop a special crafting yarn from Yafit Raffia. Until now, they have launched over 150 crocheting patterns, videos, online classes and stores. Under Ispie series they have also developed Lace Raffia, Wheat yarn, and Raffia Trimmings.
- LACE Raffia is their finer grade of Yafit Raffia and in addition to the benefits of Yafit Raffia, LACE Raffia is regularly used for intricate accessories or toys and dolls.
- WHEAT is the new type of cotton yarn that launches early 2018, which is mainly used for hats and scarfs.
- Raffia Trimming is made of 1100D yafit raffia, and used for garment accessories or crafting flowers.



## SHARTEX

*Making knitting simple.*

Focusing on knitting and developed markets, adhering to the concept of «science and technology, fashion, and environmental protection», SHARTEX is equipped with eight professional R & D teams, with tens of thousands of independent R & D products and product solutions each year. Having rich development design and the procurement resources, SharTex is also a pioneer in transforming and providing sweater ODM overall solutions to their clients

SHARTEX are upgrading their company into a digital enterprise, by using big data to drive design and development within the company, and intelligent manufacturing to meet the needs of large-scale customization and personalization in the future. SharTex follow the most cutting edge of fashion trends, science, and technology to drive inno-



vation within their products. They focus on efficient supply chain support to actively and effectively respond to their customer needs and provide their clients with the best overall solutions.

About three years ago SHARTEX set up a subsidiary company called Shanghai Hui Hao Information & Technology with a vision to create an Intelligent Design Service Provider showcasing future trends through intelligent design. Their service platform is called “elooop”

Relying on the leading new digital technology, “elooop” helps sweater enterprises transform, upgrade, and build

customer design and production services within the eloop platform. With the integration of raw material suppliers, garment manufacturers, design service providers, clothing buyers, and accessories suppliers it creates a fully vertical supply chain. The app is now available.

## Organized Pattern Development

“elooop” is dedicated to yarn development and manipulation. Based on each clients needs, eloop is able to offer a variety of solutions in terms of visualization of pattern design and development. They are able to show case patterns in a more realistic yarn simulation through digitalization.

## Style Design and Development

“elooop” can match different gauges, patterns and silhouettes according to the style and material requirements of the yarn to form different style design solutions. The sample effect can be intelligently presented in 3D.

# KNITWEAR MANUFACTURERS

## JIANGSU YANGFAN GARMENT

*Yangfan/ YF Knit established in 1993, is state -of-the-art and the largest sweater manufacture for WHOLEGARMENT Shima Seiki machines.*

The company has around 200 Wholegarment and SRY machines in their Changshu factory, along-side a wide variety of computer knitting machines by STOLL.

YF has a team of designers that work closely with their clients for stitch development and sampling. They offer seasonal design solutions as a source of inspiration and starting point for their clients.

YF Knit is in the process of expanding capabilities into socks, shoe upper, bags, accessories, as well as home textiles with the addition of new machines.

Their aim is to become a truly revolutionary manufacturer that does not only focus on quantity but also produces only the highest quality products.

## SHANGHAI XIANGRONG TRADE

*Shanghai Xiangrong Trade is a manufacturing and trading company specialized in all kinds of knitwear.*

They have 20 years of professional experience in the production of sweaters, as well as their own in-house design team that produces new collections based on the latest trends and technology.





They ensure that their products are of the highest quality within production, and make sure that price their meet the market demand.

They care about the environment and the protection of animals within the supply chain, and only use non-mulesed wool and non-abused angora hair. For cotton, they also focus on using organic cottons within their product ranges as well as other products that are machine washable.

With the high production cost of the whole garment machinery that has entered the market, Whole garment sweaters have not available to all market levels. With this, Xiangrong, have overcome the technical difficulties and are able to produce a more affordable seamless sweater on a regular STOLL flat bed-knitting machine. Compared to the Whole garment machines, their technology offers a wider selection of patterns at competitive price points.

## SHANGHAI I&S FASHION

*was established in 2009 and is one of the first ODM companies serving both high-end domestic and international fashion brands that exclusively use 100% imported Italian yarn.*

The company has continuously strived to focus on environmental protection and has gradually influenced more and more customers to accept these values and at the same time, develop their international reputation in the global knitwear industry.

I&S place a strong importance to the cultivation of young designers. Each of I&S's talented designers is encouraged to boldly use their imagination to design freely and produce leading edge designs. I&S focus on creativity, exploration, fun and progress within design, allowing them to create beautiful knitwear using single yarn products, believing strongly in their own unique designs.

I&S insists on original design and providing unique styles to serve domestic and international leading brands by using high-end Italian yarns. As a leader and pioneer, I&S has developed strategic cooperation with many well-known brands, such as ZHU CHONG YUN/ZCY, MARISFROLG, INSUN, EXCEPTION, EP, LANCY, RUMERE and XIAOCHONG.

The foundation of I&S's success in the industry is based on original designs made of 100% imported top quality Italian yarn to ensure the highest quality, style and purity within their colours.

Each original design is unique and they offer a range of over 1000 designs annually to select from. All development samples and production pieces are made on imported German STOLL computer knit machines to guarantee the highest quality

Close strategic corporation with Italian spinners and R&D Centers gives I&S the advantage to obtain the latest trend forecasting, shade cards, swatches and patterns earlier than its competitors.



The long-term collaboration with domestic and international top fashion brands has established I&S's trustworthiness, professionalism, service quality and efficiency.



## DONGRONG GROUP

*located in Chifeng Inner Mongolia, is a whole vertical supplier-chain group company contains whole cashmere production process including cashmere dehairing, dying, spinning, garment knitting, printing and cashmere scarves manufacturing.*

We devote ourselves for uncompromising quality and sustainable production. Dongrong Group is the first cashmere company in China who obtains GOTS certificates for all production process. We are the pioneer to produce cashmere in high fashion with strong environment consciousness.

With more than 35 years' experience in cashmere industry, occupying the Top 5 cashmere product exporter of China, Dongrong group is collaborating with famed cashmere brand "Christopher Fischer" to present new collection at SPINEXPO with Christopher Fischer Cashmere Collections for Men, Women and Home. Using only the very finest cashmere, Christopher Fischer is recognized and renowned for exceptional quality, produced to the highest standards, and designed for a modern global luxury lifestyle.



## SHANGHAI TEXTILE DECORATION

*established in December 20<sup>th</sup> 1990, specialize in textiles, clothing, home textile products, new fabrics import & export trade of large-scale professional dealers and agents.*

The company belongs to Shanghai Textile Group. Our own Knitting Fashion Dept. has a professional team specialized in knitting clothing design, production and sales; we have four big sweater production bases in Shanghai, Guangdong, Cambodia and Indonesia. We focus on design, product and sales of all kinds of knitted garments, apparel and home textile products, and commit to build a knitting product innovation platform, a «one-stop» solutions for the wool knitted sample and order needs of customers.

**Our featured products:** Knitted garments and accessories, Technology and functional knitting products.

### Our strength:

- We design and develop sweaters with kapok fibers for environmental protection, bacteriostatic and natural degradation.
- We design & research on functional clothing.
- We have a sample factory which can quickly and accurately manufacture

the sweater samples and guide the mass production.

### Our cooperation with the industrial counterparts:

- We cooperated with Shanghai Different chemical fiber to develop physical denatured polyester knitwear
- We cooperated with Shanghai Risoo Technology Textile to develop dry acrylic sweaters
- We cooperated with Jiangsu Yangfan Clothing. to develop the whole garment bottom knitted sweater.

**Our Challenges:** Customers demand quick response, the batch production involves much more styles, craft difficulties rise, delivery time is shortened.

### Solutions:

- Build a sample factory and produce samples quickly
- Adjust the supplier system to accurately align resources and needs
- Constantly develop new styles and always maintain the passion and fashion of design and development

## **PESCALLO CREATIVE DESIGN CENTRE**

*is an ODM knitwear design company  
which carries the genes of Zhejiang  
Jiaxing knitting clothing Industry.*

It relies on the support and background of the headquarters in Jiaxing, the branches in Italy, Hong Kong and Shanghai. It has its own independent Italian design team, Hong Kong and Taiwanese designers along with the Chinese design team. Even though they are located in different places, the designers harmoniously cooperate with each other!

Every year Pescallo provides 1000 of knitting knitted garments for the women clothing market in China and it also owns and does business with the Italian multinational brand CA'VAGAN and the Chinese online knitting brand GergoFili. Pescallo's mission is to provide the best ODM service for women's clothing brands. Compared to other design companies in Mainland China, the target of Pescallo design team is the top Italian talents and the most professional design from Europe, all knitwear emphasizing the fashion design, the European trend color system and the rich variety we can find !

Pescallo design mainly focusses on natural fibers. At present its main DNA series are sweaters, overcoats and scarves. In addition to the own brand CA'VAGAN which has gathered in the first-line department stores, multi-brands stores and outlet stores, our ODM business has also carried out in large area marketing model of Products ordering, and we are vigorously spreading the online knitting brand GergoFili, in China we have ODM cooperation with many brands such as ochirly, La Chapelle, MO&Co, EP KIDS, ELAND, DI SETA, HIROKO BIS, i+mu, INDEX, etc. Furthermore it takes advantage of the superiority of Italy design to develop ODM design services with Italy first-line brand LIU.JO and PINKO.

Using independent design platform Pescallo has actively cooperated for

6 consecutive years with the Department of fashion design of Jiaxing Institute to assist in the training of future Chinese design strength, in addition Pescallo has invested in a large number of knitting equipment and training funds and practice venue in order to help these students to get closer to the market before graduation.



## **JING QINGRONG**

*Manufacturer of knitwear,  
jersey and woven*

Founded in 2004, Shanghai Jing Qing Rong Garment Co. is a standardised knitting company specialised in producing a wide variety of knitted garments. They have 4 manufacturing bases and a monthly production capability of 1'500'000pcs, in China and Cambodia.

With increasing development, JQR is focusing on innovative technological development and its applications. JQR can handle printing, embroidery, washing and woven mixed sweaters from 3GG to 16GG with a minimum order of 500 pieces.

The company also have jersey and woven factories, which can produce a wide range of styles.

With increased awareness of the importance of sustainable development, JQR supports their customers in the planning of how to recycle their products. Their in-house designers create exclusive styles each season with this concept in mind. Currently, JQR is focusing specifically on shortening production lead times and assisting their clients in promoting sales.



INTERPRETATION  
OF SPINEXPO™  
COLOUR TRENDS  
BY OUR  
DESIGNERS

# RORY LONGDON

## **MRC & RORY LONGDON is a collaboration of tradition and creativity.**

*The historic knitwear manufacturer MRC was founded in Italy in the late 1950s and with a continual evolution through new technology, research of stitches and techniques, it strives to produce unique knitwear pieces.*

*RORY LONGDON is a British Knitwear designer who has gained his experience in the luxury sector by designing knitwear with a very creative and hands on approach. This collaboration combines a profound knitwear know-how with a creative design approach, leading to an exciting and fresh take on knitwear.*

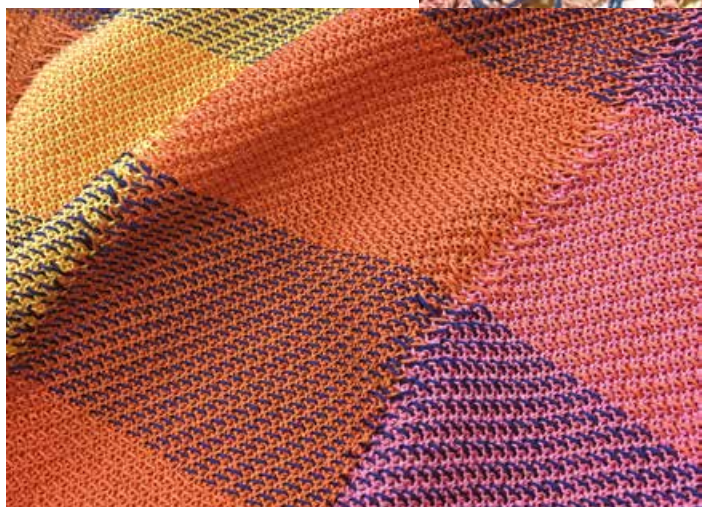
## **RADIANCE**

**Yarns:** Xinnuo, Sawada, Topline

### **A modern Safari.**

Sun-bleached linen tents are pitched on raw white sands, in the midst of the Moroccan desert. Canvas awnings cast ombre shadows on the uneven sand.

Fabrications are understated yet luxurious. Semi-sheers are refreshed with micro-weaves and tonal intarsias, while tone on tone micro-stitches are rendered luxurious with subtle sheens. Yarns are entirely natural, heavily focused on linen and cotton. We create body to sheer cottons with paper blends.



## **IKEBANA**

**Yarns:** UPW, Best Shan, Winning

Looking through the sketchbook of a master of the Ikenobō School. Hand-painted watercolours on Kozo paper, tell a story of a delicate art. Stitches are ethereal like the delicacy of these crafts, semi-sheers, watercolour jacquards, and delicate structures. Finishing's and trims are studied to the finest details, of utmost femininity.

Inspired by artist Nendo's - Kaleidoscopic Ikebana - the fabrications are given muted shimmers by encasing paillettes inside the knit.

Recalling Nendo's use of "ivy mirrors".

The pastel colours bleed into one another like watercolour brush strokes.

Yarns are all fine weight. A presence of viscose - both matte stretch and high shine fluid yarns. Semi-sheer qualities - linens with subtle textures, shine silks and interesting natural/man-made blends.





## MAHOGANY

**Yarns:** *Zhongxin, Hubo*

Inspired by architectural tree houses, where winding branches are used to structure architectural frames. We simulate the effect in precision stitches. A play of natural materials manipulated into man-made structures.

Fabrications are structured and planned. Lattice works mimic wicker chair formations, while branch formations create borders and frameworks. Stitches are precise and systematic, mixing multiple textures together - enriched with methodical handwork.

Yarns are all natural. Crispy and dry hand feels, in fine to heavyweights.

Matte cotton worked beside high shine viscose.



## GEODESIC

**Yarns:** *Yarns & Colors, Hotta, Polyace*

Exploring the Tropical Biome at the Eden Project, we find a fascinating juxtaposition of lattice frameworks and tropical plantation. Thermoplastic cells overlap with lush banana leaves, inspiring a story that sees a fusion of man-made graphics and natural formations. Fabrications are a study of graphics; geometrically planned structures are mixed and matched with botanically inspired jacquards and stitches. Like

the works of artist Patricia Urquiola, contrasting elements of organic, plasticised, structured and natural, collaborate for a modern aesthetic. Yarns are a hybrid of both man-made and natural fibres. From techy nylons to fine cotton and wool blends, plastic transparencies are offset with natural linens, while viscose is present in both matte and shine.

## STRELITZIA

**Yarns:** *Armonia, UPW, Sawada, Wellmay, GTI*

**A direction divided between:**

### AFRICA

A journey through Africa, from Benin to Cameroon, Zulu to Madagascar. A rich journey of artisan and craft. An eclectic mix of material and colour, create a story of luscious fabrics and techniques. The fabrications are artisanal yet modern. Wooden and shell elements are used to enrich dimension, while fringing and crochet give a sense of luxurious handwork. The yarns play on varying weights - mainly cotton and linen focused, with touches of silks and raffias to add new dimensions of shine and matte.

### YVES SAINT LAURENT

The Khama, BouBou, Djellaba and Pyjama are garments that bare symbols and meanings. Every thread is woven with purpose, telling stories of the wearer's life. Wrapped, crinkled and tied these garments are both comfortable and practical.

Fabrications are organic; hand loomed, imperfect yet perfect. Subtle textures, hand woven stripes and featherweight padings, focusing on a story of yarns that are as natural as we can find - linens, cotton, silks, all in their purest forms. Natural slubs, imperfections, vegetable dyes, mini boucle's all used to create fabrics that are naturally unique.



# STEVEN OO

*Steven Oo was born in Myanmar and studied in the USA before establishing himself as a designer in Shanghai.*

*Steven refers to his personal knitwear designs as knitwear architecture because of a deeply held interest in surface textures, structural silhouettes and innovative stitches. His design philosophy is to focus on stitch development before thinking about silhouettes as he believes there is more room for play in innovating stitches.*

*A lot of Steven's work draws inspiration from the geometric and repetitive patterns from nature, architecture, and interior design. Steven often combines his knowledge of machine knitting and hand knitting to come up with unorthodox methods in designing knitwear.*



## RADIANCE

**Yarns:** GTI, Hotta, Consinee

Radiance brings to mind strands of light shining through a misty fog. The very neutral but warm palette was chosen based on the idea of the morning sun shining through the mist. Silks, linens and cashmere make unlikely friends in this combination of stitches. The silk serves as the radiant aspect while the linen offers structure and drape, with the cashmere providing comfort to the wearer.

Taking inspiration from the idea of strands of light, this capsule is a study of integrated fringe techniques. There are fringes created from inlays as well as from cutting the float of double-bed knitting structures. Fringes often featured in spring-summer collections tend to lean towards a more casual aesthetic, while in this case, the luxuriousness of the yarns combined with advanced knitting techniques will only leave the wearer radiating in a crowd.

## IKEBANA

**Yarns:** Wellmay, Sawada

The art of Japanese floral arrangement sparked research into different Japanese traditional crafts. The floral stitch patterns became the source of inspiration for this group. The knitting technique utilizes an inlay method to recreate the traditional floral patterns into almost an abstract look at the floats within the knit, clearly visible from both inside and out, creating natural waves of multiple spring pastels.



The backdrops are also created using the same inlay knitting technique. However, the stiffness of the Raffia yarn creates a very stable structure that can serve as a backdrop or used in home textiles. Ikebana as an art form explores the hardness and softness of plants and flowers and this collection attempts to display both soft and hard using the same technique but with different yarns.

## MAHOGANY

**Yarns:** *Sawada, Wellmay, AA Global*

The earth as the starting point of an inspiration can take a designer's mind to many different places, but in the case of Mahogany, the inspiration comes from the textural patterns of wood grains. By utilizing different types of yarns not normally seen together, this capsule collection aims to bring a modernity to something very earthy. High stretch nylon lily yarns mixed with fine raffia yarns create see-through structures.

The pattern cutting is minimal, to showcase the wood grain inspired textural patterns on the knit.



## GEODESIC

**Yarns:** *Armonia, Hubo*

Chaos is the inspiration for this capsule featuring an artful explosion of soft colours with bright colours as accents. Just as different colours would react if dropped into a fluid medium, there is an exploration of dip dyes using digital printing, with the brighter colours using a special 'glow-in-the-dark' yarn embellished with beads. The garments are created with an artist muse in mind. It is as if she wore plain clothes while working on an art piece and the clothes were naturally stained in an artful way. The silhouettes are very simple as the showcase is on the digitally printed watercolour artwork with hand beading and embroidery techniques.

## STRELITZIA

**Yarns:** *Shilead, Hubo, Lugang*

The strong colours inspired a menswear collection with a study on tribal carpets. Not just regular tribal rugs though, these look as if they were melting in the summer heat just like a multi-coloured ice cream. Many different textural yarns were chosen and the jacquard itself has multiple types of stitches to create surface textures in addition to the colour explosion. The whole idea of balancing contrasts from this season inspiration.



# STUDIO EVA X CAROLA

## EXPLORATION OF FUNCTIONAL TEXTILES

*Studio Eva x Carola is at the forefront of innovation in performance textiles, apparel and footwear.*

*They research and develop creative and functional concepts and future textiles.*

*Through working with innovative makers they introduce new concepts with the focus on form and function.*

*Studio Eva x Carola believe by reversing the product creation process – designs are a result of fibre, material and machine selection rather than vice versa - the results is performance wear tailored to the athlete.*

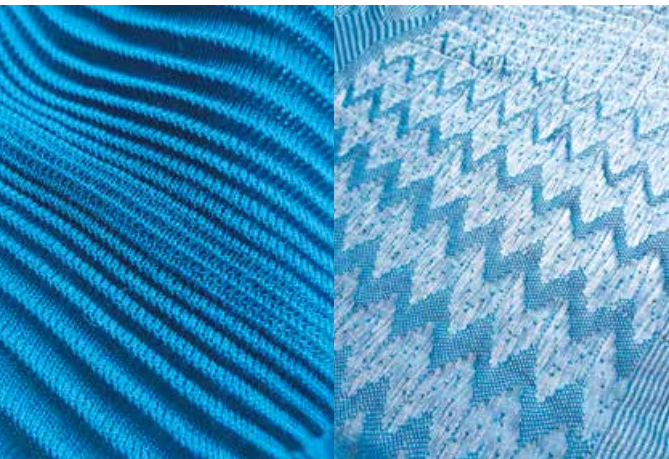
*They are integrated in all stages of product development starting with yarn research and selection through to machine preparation. With their hands on approach, with design, the result of material and machine selection, ensures a superior functionality of the final product.*

In the 21<sup>st</sup> century, the majority of the world population will be living in urban environments. In fact, the United Nations estimates that 66% of us will be living in cities by 2050. We need to design products that cater for this future lifestyle - multifunctional products that are tailored to the urban environment and can be worn for all occasions, from training to traveling to work.

This season SPINEXPO's capsule developed by Studio Eva x Carola is an exploration of how we can implement functional textiles for these multifunctional product.

We explore how Flat versus Shape and Flat combined with Shape can help to add performance elements to the all occasional products we will wear.

- We ask ourselves what benefits from flat surfaces; fabrics that follow the body like a second skin. Examples are the implementation of healing yarns, auxetic structures, bio structures, taping and compression fabrics.





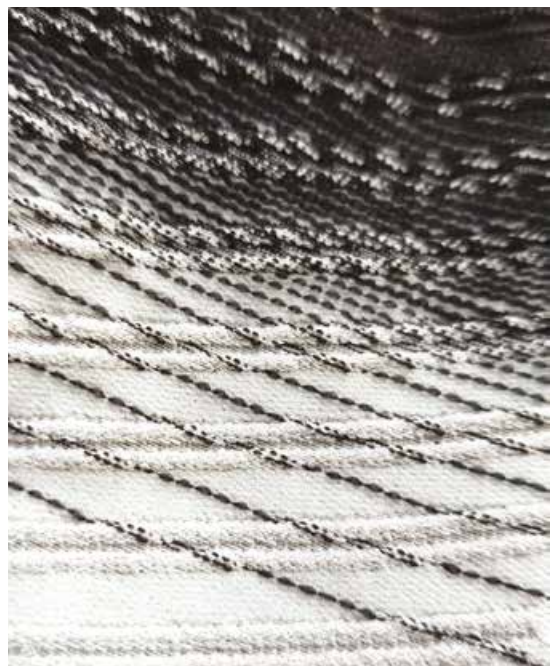
- What benefits from shaped textiles? For example encapsulate shapes, add form when looking at constructing and rigidity, lock-down, cushioning, protection, support on a textile level

- And finally we look at what benefits from flat surfaces that become shaped, eg: movement, or merging benefits from both the flat and the shaped.

This creates a base that can follow post knitting applications where experimental processes can be applied like coatings to enhance areas for extra reinforcement. Materials are shown to be highly thought out yet simply applied to everyday life.

The wearer is the inspiration and the end result is a garment designed to enhance your movements without distracting you from the present moment. Resulting into garments that can transform you from gym to the work place with ease.

This collection is developed in close collaboration with Santoni Shanghai and leading yarn and fibres manufacturers: Südwole, Meadowbrook, Polyace, Yaxing, UPW and Yiwagoe.



# ALEXANDRE MIEL

**BAlilAB is a manufacturer of luxury fashion garments and accessories, part of the BAlilAB Group, which is owned by Alexandre Miel and Mala Talwar Rana. BAlilAB was founded by Alexandre Miel in Bali in 2006.**

*BAlilAB initially started as a service centre for design and a studio for high-end fashion powered by Alexandre. We soon expanded into production management, working with an array of luxury fashion houses, high-street retailers, independent designers and fashion start-ups.*

*BAlilAB provides services for design and garment development, garment production, wholesale and e-commerce distribution, sourcing and management from South-East Asia.*

*BAlilAB also has its own retail brand in Bali.*

*Our core competencies are consistency, dependability, flexibility and uncompromising quality control.*

*BAlilAB is based in Bali, Indonesia.*

*We have satellite offices in Hong Kong and Paris.*



## The “Angelina” fabric is completed.

With its particular touch and visual aspect, this fabric expresses something very modern and innovative with the way it drapes, glitters and has a subtle transparency.

The aim has been to express this modernity using three distinct approaches; Futurism, Romanticism and Glamour.

We have shown how versatile a fabric can be and the variety of ways to express transparency, softness and iridescence.

The FUTURISTIC vision of the fabric is shown through simplicity in perfection. It is tense and shows no pleats, no flaws.

A simple tube in suspension around the body.

The ROMANTIC element shows how fluid and drapy the fabric can be. The addition of layers allows the fabric to showcase its softness. Ruffles and ruches are showing its delicate beauty.

Exuding GLAMOUR, the fabric is assembled with stretch lace to unveil its sensual side, subtle yet provocative transparency with a dramatic sense of drape.

The fabric is a genuine new generation jersey with beautiful flexibility and versatility, having a highly refined touch and aspect.





# CECILE FEILCHENFELDT

**Founder of the CECILE FEILCHENFELDT KNITWEAR STUDIO PARIS, Cecile has worked for 20 years as an experimental Knitwear Designer, working on trend and forecasts, Haute Couture, special pieces for Prêt-a-Porter as well as the car industry.**

*Her work is known for the highly sophisticated combination of tradition, know-how, technical skills and a today's interpretation.*

*For SPINEXPO SPRING/SUMMER 2019, CECILE FEILCHENFELDT imagined a huge game board representing the colours of the season and their themes. Underlining her statement "NO SUMMER WITHOUT A HAT" the coloured surface became a catwalk for hats and patterns giving the yarns and their different qualities an inspiring, playful scenery.*

**Yarns:** Eastar, Shilead, Best Shan, Zhongxin, AA Global, Winning, FashionYarn, Sawada, Topline, Yarns & Colors, Xinnuo, Galaxy, Filix, Best Leader, Shi Kwan, Consinee

## RADIANCE

Wonderful, huge, oversized straw hats representing the summer at its best. Looking for shadow overlooking the seaside

## IKEBANA

Beautiful dégradée of romantic shades of colours and never-ending shapes around your head imitate and emphasise the triumph of nature. Flowers everywhere. Petals everywhere. You feel the power of nature.

## MAHOGANY

Inspired by the headpieces of the legendary samurai but lost through ornamental knots and beads. This story becomes an unknown fantasy in greens and earth tones.

## GEODESIC

Playful and childlike but at the same time very calculated and skilful. This piece is exaggerated and a stunning piece of architecture for the head.

## STRELITZIA

The generously wrapped summer turban is back with deep colours and some dried out zones that come with a warmth of a sunny day.

# KATIE HANLAN

**Katie Hanlan is a former knitwear designer from John Rocha in Ireland and a regular stylist for SPINEXPO.**

*Katie runs a studio in Dublin where she works on sculptural knitwear pieces through to home textiles and garment design. She specialises in knitted fabric manipulation, combined with hand techniques such as hairpin crochet and innovative macramé.*



## RADIANCE

**Yarns:** *Yarns & Colors, Sawada and Xinnuo*

Delicate sheer layers and pleats in crisp linens and beautiful paper yarns in muted tones create a sophisticated silhouette

## IKEBANA

**Yarns:** *Takizen, Best Shan and Zixin*

Inspiration comes from the structure and simplicity of beautiful paper and linen yarns, combined with the beauty of the Ikebana arrangements, leads to sheer pleats with crisp folds and ribs to create delicate yet structural garments in pastel tones.

## GEODESIC

**Yarns:** *Polyace and Yiwagoe*

The inspiration comes through architecturally inspired shapes in vibrant and bold colours. Mixed with off-gauge knits in delicate yarns, sheer knits bring contemporary garments with structured silhouettes.

# M.O.H.K.

**M.o.h.K Studio is a knit and weave based collaborative studio focused on research, innovation and design, founded by Helga Matos and Odina Keim who joined forces to combine their creativity, knowledge and skills.**

*Helga has had her own woven textile studio working on collaborative projects with artists, interior, fashion and product designers. Odina has been teaching knitwear at the University of Southampton for the past 15 years and her expertise lies in Shima Seiki programming and knitting, working closely with Shima and the University.*

*M.o.h.K studio's drive is to above all consider the future of textiles and work on ways of combining different disciplines to create forward thinking concepts and textiles. By researching new technologies but not forgetting traditional techniques, the focus is to create fabrics and ideas, which are innovative and well considered from, start to finish.*

## RADIANCE

**Yarns:** AA Global, Best Shan, Consinee, Galaxy, Shilead, Wellmay, Winning, Xinnuo, Yarns & Colors, Huayi

"Light of the world" comes from the concept that as a new age of Artificial Intelligence is evolving, are we able to retain what makes us human and how long will this last? The question of whether physical and cognitive functions can be programmed and where in these questions lies our senses, emotions and soul? Is that what will always make us unique or is it really only the spirit, the "light" which sets us apart! We are very much looking at light and shadow and the difference between the different layers which make up a being.

## IKEBANA

**Yarns:** Best Shan, Biella Yarn by Südwole, FashionYarn, Winning, Xinfang, Zhongding

"Creative Exploration" is about the time and place in which we can explore the creativity within us. It is a place of freedom and emotion with endless possibilities, when you allow your inner self to explore.

Movement, structure and versatility is key to this story.

## MAHOGANY

**Yarns:** AA Global, Biella Yarn by Südwole, Hubo, Kyototex, Xinnuo, Yarns and Colors

"Belonging" explores the roots and foundations of life and of ancestral history through the concept of a tapestry of life.



How we begin to look back at the events, which make up our own stories and paths. Natural and raw but an overall sense of comfort brings meaning to this trend.

## GEODESIC

**Yarns:** Biella Yarn by Südwole, Polyace, Yiwagoe, Zhongxin, Zixin

"Effective Stability" looks at the merging of the manmade self-sufficient environment and the functionality of the natural structures needed for such life.

How do we use what the world gives up and combine it with what man can make to enhance natural life. Modern living protecting Nature. Tactile yet modern, gentle yet effective and endurance makes up the essence of this story.

## STRELITZIA

**Yarns:** Esquel, Sawada, Shilead, UPW, Wellmay, Winning, Zixin

"Culture Clash" A fun and vibrant celebration of the uniqueness of different cultural values, coming together and merging with one another in harmony. Mixed cultures, mixed ideas. Combinations of traditional techniques and influences from tribal celebrations. Patterned and fun, lightweight yet powerful. The contrast of bright and bold and earthy and textured.



# KEMI CLARK

**Kemi Clark is a freelance woven textile designer who collaborates regularly with Spinexpo.**

*Working from her North London based studio, Kemi designs, develops and produces bespoke fabrics for the fashion and interior design market. As a Fabric Buyer within the fashion industry, her personal practice aims to explore the boundaries of weave and surpass what is already available commercially.*

## RADIANCE

**Yarns:** Consinee, Xinnuo, GTI, Shilead, Zhongding, Well May, Biella Yarn, AA Global and Lugang

Regal elegance is renewed through a powdery palette that epitomises the women of the 18<sup>th</sup> century French Court. Natural fibres dominate within complex structures. Fabrications are multilayer, woven ribbon, pleats and smocking-like structures are inspired by the detailing of the traditional robe "à la Française".

## IKEBANA

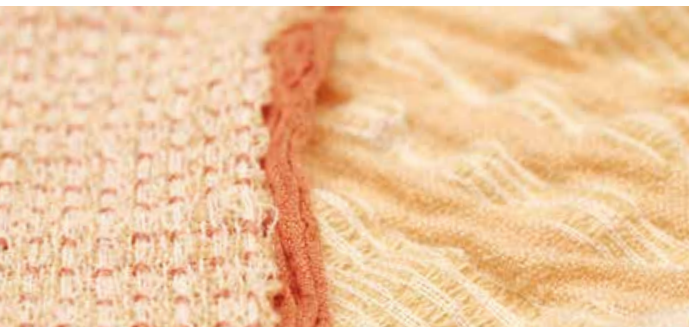
**Yarns:** Best, Zixin, Zhongding, UPW and Winning Textile

The ethereal beauty of the palette is contrasted by the boldness of the stitch; a balance is struck and translated. Fabrics are finely woven and lightweight, but frosted textures give way to bolder areas of colour breaking the surface and it is these undulating surfaces that shape their form.

## GEODESIC

**Yarns:** Xinao, Esquel, Zixin, TOPLINE, Xinfang, Orient Hongda and Yiwagoe

Modular yet unsystematic, without repetitiveness or uniformity. Designs focus on placement and composition, inspired by the forms and shapes of the Walden 7 in Barcelona. Ribs and cords lead while protruding surfaces and woven inlays are unexpectedly juxtaposed.



## MAHOGANY

**Yarns:** Yarns & Colors, HUBO, HOTTA, Zhongxin, UPW, AA Global, Xinsha, Kyoyotex, Eastar and Xinnuo

The demand for raw materials and agriculture is relentless. Through design, we explore the industrial and stylised changes of our landscape, the fight between natural and manmade. Organic base textures are contrasted and overruled by structured linear pattern work. Woven in metallic embellishments have a repeated presence. High twist or steel cored yarns manipulate shape structure and stability.

## STRELITZIA

**Yarns:** Esquel, UPW, Regal, GTI, Sawada, Shilead, Well May, HUBO and AA Global

A fusion of bold colour and statement material contrasts. Fabrications rich in technique and handle, combining the differing design identities across African tribal textiles. Graphic pattern work is diffused with subtle colour changes, fringing and lace techniques are combined in luxurious cloth that drapes across the body.



# LAURA MCPHERSON

**Laura McPherson is a Knitted Textiles, Knitwear Designer and Consultant based in England, specialising in material innovation and fabric development.**

*Her studio offers a range of services from trend forecasting, future thinking concept developments and presentations in colour, yarn and materials.*

*Laura's work aims to challenge the perceptions of knit and embraces an experimental approach to materials, yarn and dye techniques. Her work lies at the intersection of textile innovation and new materiality, adopting a hybrid approach to technologies and techniques old and new, creating fabrics to inspire and excite.*



## RADIANCE

**Yarns:** *Best Shan, Huayi*

An evolution from the exploration of natural forms, evoking clarity and purity whilst exploring unexpected yarn and material combinations. Paper yarns are combined with natural cottons, linens and silks. Knits are cast, coated and dipped, exploring ceramic like qualities to create one off precious pieces, evoking intrigue and mystery. Details are taken from nature and explore gathering, textured surfaces and delicacy through the integration of knit, plaster and silk chiffon.

## IKEBANA

**Yarns:** *Winning Textile*

The delicate feminine qualities of Ikebana are realised through lace like structures, stitch and devoré. There are subtle contrasts between transparent and dense areas, executed through the application of yarn and technique. Organic and flowing, fabrics are light to the touch and the beauty is in the detail, referencing garment structures and trims. Painterly qualities are achieved through subtle dyeing and paint on effects.

## MAHOGANY

**Yarns:** *Kyototex, Wellmay, Yarns & Colors, Sawada, Biella Yarn*

An exploration of a modern take on woven basket like structures, blurring the lines between knit and weave. Lattice like structures and pockets support the integration of non-woven fabrics and wood to create structural form. Colours are sophisticated and considered, enhanced with subtle metallic yarns and foiled elements, taking the natural palette to another level.

## GEODESIC

**Yarns:** *Esquel, Orient Hongda, Xinao, Armonia, UPW, Hubo, Topline, Xinfang, Yiwagoe, Fortune, Zixin, Polyace, Winning*

A challenge of the properties of yarns, exploring plasticised qualities, through yarn manipulation and mixed media application. Block colour and shape is distorted to create crumbled and folded forms. This is achieved through print, heat setting and embossing, merging transparency with dense qualities.

## STRELITZIA

**Yarns:** *AA Global, Armonia, Esquel, Hubo, Sawada, Shilead, UPW, Wellmay, Yarns & Colors*

Focus on bold colour combinations and a hybrid approach to pattern and texture. Elements of woven qualities form jacquard like patterns and work alongside heat transfer print techniques to explore colour on colour. The combination of raffia and tape yarns gives structure and richness to the direction.

# WINCHESTER SCHOOL OF ARTS

*A specific trend area will be dedicated to the interpretation, by second year students from the textile and knitwear courses of Winchester School of Arts, of SPINEXPO™ 5 directions for Spring/Summer 2019.*

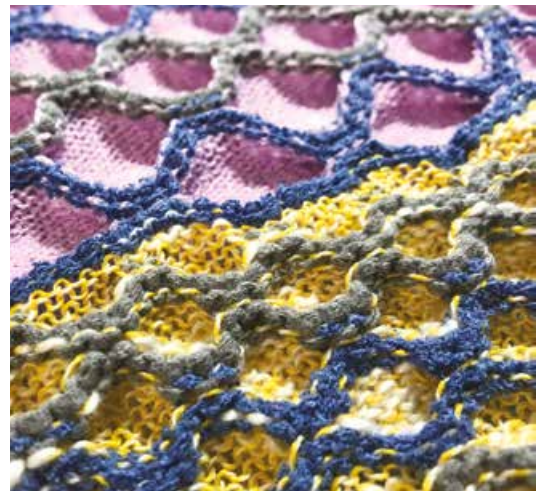
The students' drive is to consider the future of textiles and work on ways to combine different disciplines to create forward thinking concepts and textiles.

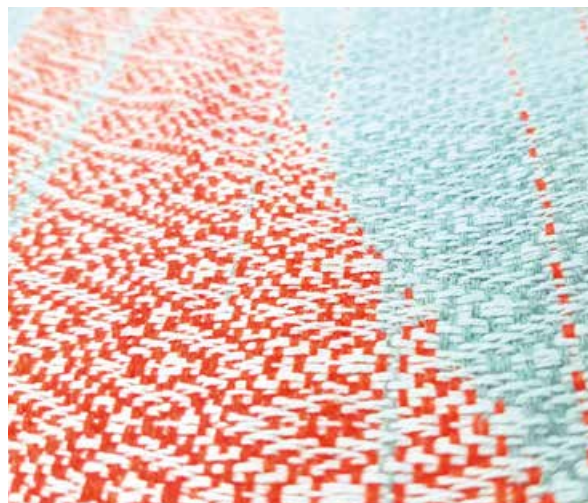
By researching new technologies but not forgetting traditional techniques, the focus is to create fabrics and ideas, which are innovative and well considered from, start to finish.

For Radiance, the first direction, students have been studying light and shadow and the difference between the different layers, which make up the fabric.

The second direction inspired them to experiment movement, structure and versatility while the third direction focused on a sense of comfort through the use of natural and raw yarns.

The two other directions inspired students to use and design fabrics that are tactile yet modern, gentle yet effective with endurance, making up the essence of the story. The last trend brought them to combine traditional techniques and influences from tribal celebrations.





# ITALIAN YARNS AT SPINEXPO™

*A regular feature at SPINEXPO™ Shanghai is our Italian Yarn Pavilion, where 4 leading companies exhibit their latest developments under one roof. This season SPINEXPO™ showcases a selection of these creative yarns, bringing inspiration from our designers as an independent presentation within the SPINEXPLORE trend area.*



**Lanificio Dell Olivo** has over a century of history and the philosophy of their spinning mill has always reflected the values of high quality and ongoing innovation through the manufacturing of innovative and fancy yarns with character and creativity.

Their fibres are processed in a highly advanced spinning mill, equipped with new digital control technology and a series of special mechanical in-house design improvements.

Lanificio dell'Olivo is equipped with an internal management system for sustainability, called 'Going Green', which guarantees production traceability, a risk analysis in relation to chemical substances, an internal and external production analysis and the company's social responsibility commitments. 'Going Green' is an instrument for strategic development and focuses specifically on crucial themes such as product and process, social conformity and the reduction of harmful chemical substances in fabrics and garments. 'Going Green' is an ethical commitment and represents the value that Lanificio dell'Olivo places on environmental and social sustainability, competitive factors that are fundamental today.



**Zegna Baruffa** is a world leader in the production of fine yarns for luxury knitwear products and home to the highest quality yarns both classic and fancy, made from super extra fine merino wool, pure cashmere and top quality blended fibres.

Established in 1850, with key developments occurring in 1974 with the acquisition of the prestigious Lane Borgosesia Company and in 2009, the merging with Filatura di Chiavazza.

All aspects of production are still in operation at the historic plant in Borgosesia, where three vertically integrated factories guarantee the 'Made in Italy' high standards of quality and customer service. These standards are reflected in their Cashwool® that is synonymous with quality and innovation in the field of top yarns for knitwear, processed with an exclusive and patented system. In addition, developments in their Mousse yarn, express creativity and a genesis of technical skill, experimentation and perfection. Mousse yarn can be both the simplest and also the most incredible thing at the same time, a slender construction that satisfies the most exacting and ambitious requirements.

Zegna Baruffa Lane Borgosesia produces and distributes in over 50 countries around the world. The brands Baruffa, Chiavazza, Botto Poala represent the widest range of natural fibres transformed into yarns.



**Millefili** offers 'Made in Italy' fancy and classic fine yarns for knitwear and socks, available in different counts and a wide ranging stock service supported in both woollen and worsted yarns.

Founded in 1981 in Carpi, Millefili is one of the largest weaving companies in Italy. Millefili offers three lines, all selected by a team of internal stylists. «High Profile» (ultrafine woollen and worsted yarns for top quality knitwear), "Selection" (ultrafine woollen yarns for all season knitwear) and "Blurring" (fine quality fancy yarns for researched knitwear collections).

They have developed a line of recycled cashmere, using garments where linkage is cut out, the garments cut in smaller pieces to be treated back as fibres that are newly spun into yarns.

**Linificio e Canapificio Nazionale**, is the worlds leading in spinner of flax. The company produces yarns in pure linen as well as blended with cashmere, wool, alpaca, mohair and unbleached silk. These are developed and dyed to use in weaving, circular knitting and flat-bed knitting.

Linificio offers a wide range of solid and melange colours with stock service, as well as linen, bioorganic and hemp yarns that are available in greige or dyed colours.

Linificio e Canapificio Nazionale is a certified Master of Linen - European Linen of Quality.



*Located outside of the main Pavilion, SPINEXPO™ will host three large groups known for their creativity and high quality products.*

**The Miroglio Group** is a leading Italian industrial company that operates in the fashion and textile industries on a global scale. The group is also a great example of integrated logistics both in fashion and textiles.

Founded in Alba in 1947, Miroglio Textile operates three production plants in the sectors of fabrics, yarns, transfer paper and technical films. The investments in technological research and innovation in the last three years amounted to more than 30 million Euros, making Miroglio Textile one of the key European players.

Established up in 1981 in order to meet the Group's needs, the Yarns branch has rapidly evolved to become a market leader. The branch specializes in the processing of cotton-discontinued yarn whose production is carried out in the Tunisian plant of Boumerdes.

E. Miroglio produces classic combined knitting yarns in noble fibres and blends as well as worsted yarns for knitting, circular knitting and weaving. Producing 100% wool, wool blended yarns, Ring and twisted yarns, 100% viscose and viscose blended yarns with natural and synthetic fibres. All yarns are available in raw white and a variety of dyed colours.

The company works with some of the world's largest retail brands and offers a wide selection of fancy and novelty yarns at highly competitive prices, with their collections featuring performance and eco-sustainability products.

E. Miroglio continuously renews their offering to ensure their clients have the latest yarns in beautiful stock colour ranges and this has led to both their own success and that of their clients.

**Filpiu (Zhangjiagang) special textile products** is the branch office of FILPUCCI, Italy.

Their yarns make up the are essential ingredients for knitwear manufacturers looking for high quality materials. Their goal is to offer a leading world level web-like service that responds to the demands of globalization.

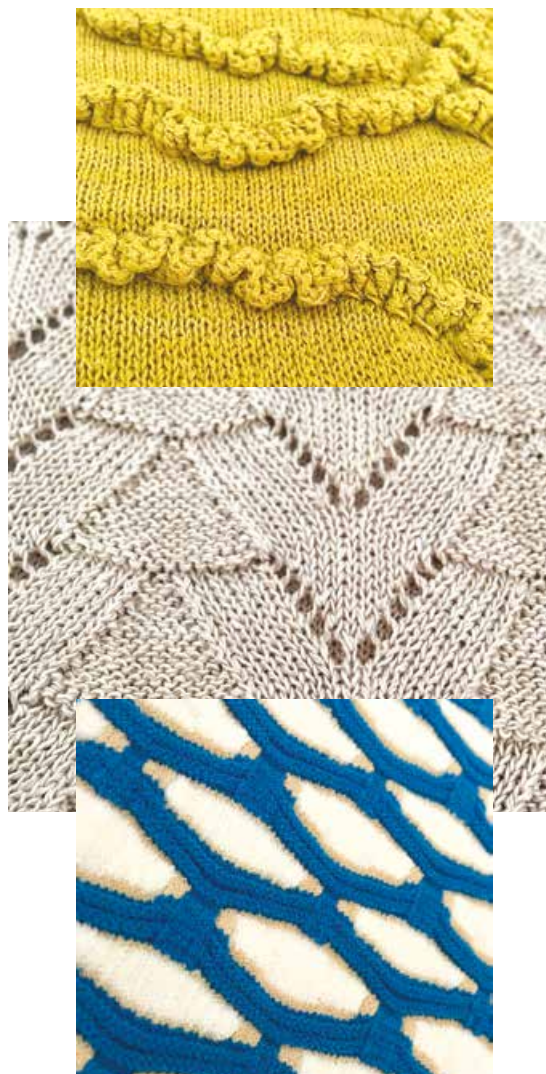
For 2019 Spring-Summer, their range includes Linens, silks and ultra-fine cottons, which also include a range of ORGANIC LINEN's featured within their ECO trend. This season is the first time that FILPIU have incorporated ORGANIC LINEN into their yarns allowing them to offer environmentally safe products. Their collection also includes fine linens twisted with silk, nylon, viscose, and cotton to give customers a wider selection.

Filpiu offer dependability and an impeccable Italian fashion pedigree of products.

**Filivivi Group** holds two prestigious Italian manufacturing brands.

**Lanerossi** with almost two centuries of history, is one of Italy's oldest and most famous spinners. Its collection consists of two main branches, worsted yarns in pure merino wool, Total Easy Care, and woollen spun yarns in pure wool or polyamide blended. The entire range is supported by a huge stock service in both solid and melange shades. All qualities are stock service supported and a range of their products is also available in stock in Asia.

**Folco** is a market leader of knitting yarns in merino wool and acrylic. Folco products are offered in eight different counts from 2/25 to 2/60 and in three different micron ranges. In addition, Folcolor offers a portable colour library with over 1150 products for review.





STYLIST: RORY LONGDON - PHOTO: HASSEN BRAHITI



YF

WHOLEGARMENT

江苏扬帆服饰有限公司是一家集设计、  
研发、生产为一体的现代化综合型针织服装企业。

目前有全成型横机160台，以及柔性生产流水线。  
扬帆致力于成为一家质量与产量并重的现代化制造商。

Mail: CONTACT@YF-KNIT.COM

Tel: 0512-52290889

SHIMASEIKI

WHOLEGARMENT M153XS 8L  
WHOLEGARMENT M153XS 12S  
WHOLEGARMENT M153 18L

WHOLEGARMENT M153XS 15L  
WHOLEGARMENT M173 15L





SHANGHAI - PARIS - NEW YORK

# Save the dates!

# 2018

Autumn/  
winter  
2019

## PARIS

4<sup>th</sup> session

July 02/04

A 2 ½ show starting Monday 2<sup>nd</sup> July at noon  
and closing Wednesday 4<sup>th</sup> July 2018 at 4.00 p.m.

## NEW YORK

10<sup>th</sup> session

July 17/18/19

## SHANGHAI

32<sup>nd</sup> session

Sept. 04/05/06

## SPINEXPO™

AN  
ESSENTIAL  
EVENT

in the  
textile calendar

“

SPINEXPO™ is the leading  
international sourcing  
exhibition dedicated  
to creativity & innovation  
in yarns, fibres and knitwear.

[www.spinexpo.com](http://www.spinexpo.com)

# UPW

## Genuine Stock Support™

All of our yarns, in all of our colours, are always held in stock.

It is quite a simple concept, backed up with a massive inventory. It allows you to be super flexible in what you order, super fast and efficient with both sampling and bulk, and with minimums being just one cone you can afford to be creative with colour too.

## StockStore™

Select, check and buy our entire collection online.

It is a whole new way to help you manage your sampling requirements, in real-time.

Stand# E02  
SpinExpo Shanghai



[www.upwhk.com](http://www.upwhk.com)

