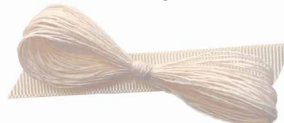


# SENSUAL FUTURE

**SPINEXPO**

SPRING / SUMMER 2019



11-4001 TCX  
BRILLIANT WHITE14-1305 TCX  
MUSHROOM11-0601 TCX  
BRIGHT WHITE16-1103 TCX  
PURE CASHMERE13-0000 TCX  
MOONBEAM15-1220 TCX  
LATTE11-1001 TCX  
WHITE ALYSIUM16-1516 TCX  
CAMEO BROWN13-0905 TCX  
BIRCH13-1012 TCX  
FROSTED ALMOND / METALLIC

## RADIANCE

A family of soft natural colours fitting all types of fibre. Inspired by cosmetics and clays, the beiges are a story of their own and replace the family of whites as a new neutral direction; whites still stand out, but used in juxtaposition or blends with the beige palette as a “faire valoir”. The key is a soft or dry handle. From luxurious fine, but not transparent cashmere and noble fibres to crisp linen and ramie, the yarns have an appearance of simplicity and sophistication. The refinement lies in the construction and finishing, a return to regal elegance and style, with a strong modern influence.





11-0603 TCX  
PASTEL PARCHMENT



13-3207 TCX  
CHERRY BLOSSOM



12-0520 TCX  
PALE LIME YELLOW



13-3406 TCX  
ORCHID ICE



11-2511 TCX  
SHRINKING VIOLET



18-4215 TCX  
BLUE MIRAGE



14-3812 TCX  
PASTEL LILAC



14-3805 TCX  
IRIS



18-3905 TCX  
EXCALIBUR



12-1212 TCX  
VEILED ROSE



16-4703 TCX  
GHOST GRAY



15-3214 TCX  
ORCHID



19-2620 TCX  
WINTER BLOOM



19-3712 TCX  
NIGHT SHADE



## IKEBANA

This palette looks for balance, with a sense of exploration.

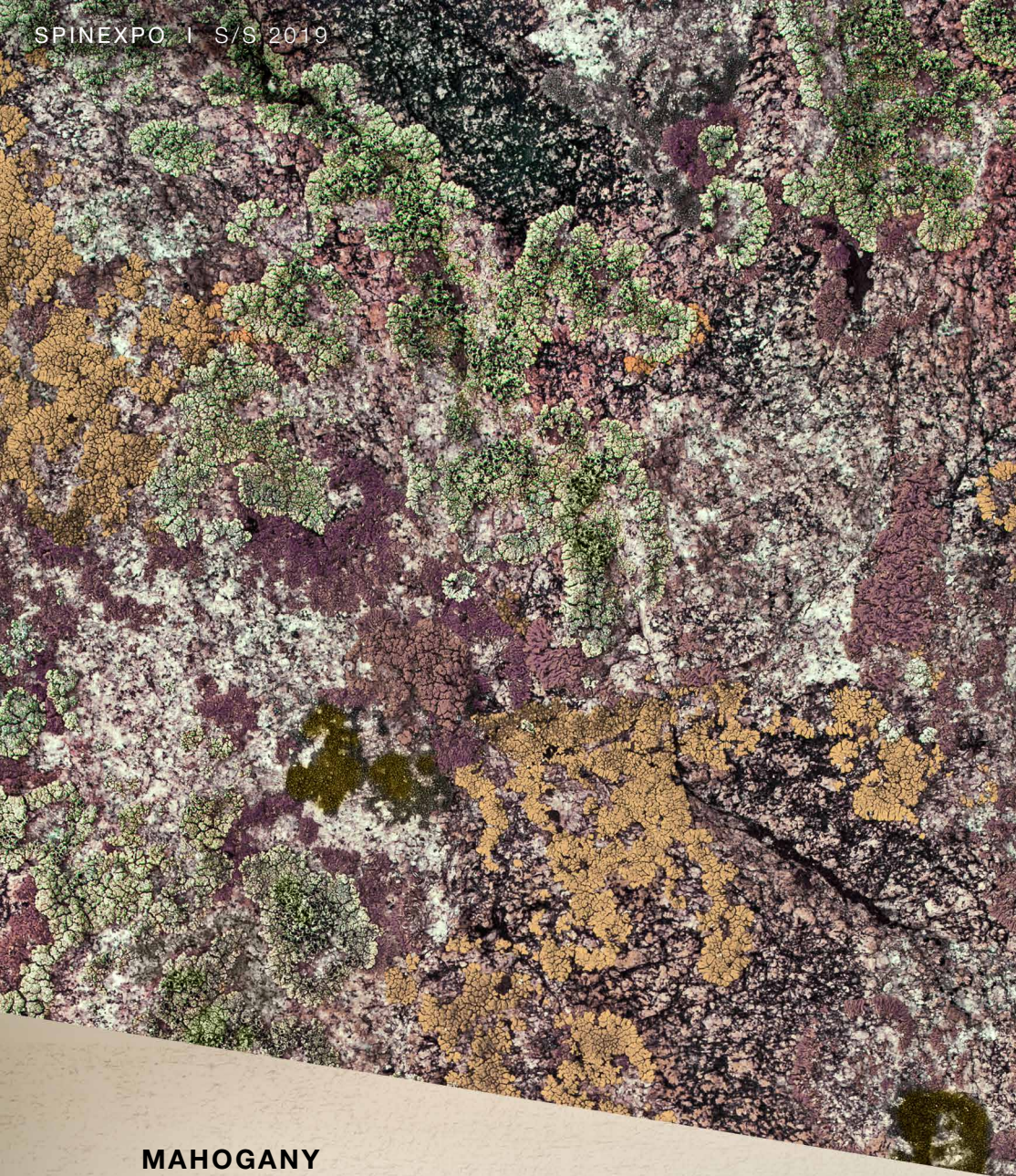
The inspiration for the softer palette leads to soft but mid-tone pastels, inspired by parchments, with a watery and delicate appearance, which comforts and consoles, in which we see tiny coloured fragments.

A wide variety of new pinks with the addition of a soft lilac, provide romance and femininity. The opposite palette brings tones a level stronger with colours fitting fresh linens and new structural blends of natural and man-made fibres.

Discreet additions of neaps and visual constructions contain the importance of Orchid Pink and Pale Lime Yellow.

The palette brings a compelling and surprising proposal, showcasing a more interesting perspective in the use of colour.





## MAHOGANY

A unique palette inspired by the earth and its vegetation, where earth tones represent what the Earth produces; spices, nuts, vegetables and eco-roots, 10 colours for a palette of earth tones inducing a balance of contrast from lamè tie-and-dye or melange blends to comforting and assured, warm, experienced and well tested that bring impactful colours in an ambiance of chiaroscuro, balancing a contrast between the colours. Greens are still evolving, as khaki is no longer seen as a military based colour but as a catalyst shade mixed with almost all other colours. Gold metallic is important to embellish and enhance the direction.

16-1324 TCX  
LARK



18-0629 TCX  
LIZARD



19-1625 TCX  
DECADENT CHOCOLATE



17-0115 TCX  
OIL GREEN



18-0228 TCX  
PESTO



19-0508 TCX  
PEAT



19-0823 TCX  
CROCODILE



19-4205 TCX  
PHANTOM



15-0927 TCX  
PALE GOLD



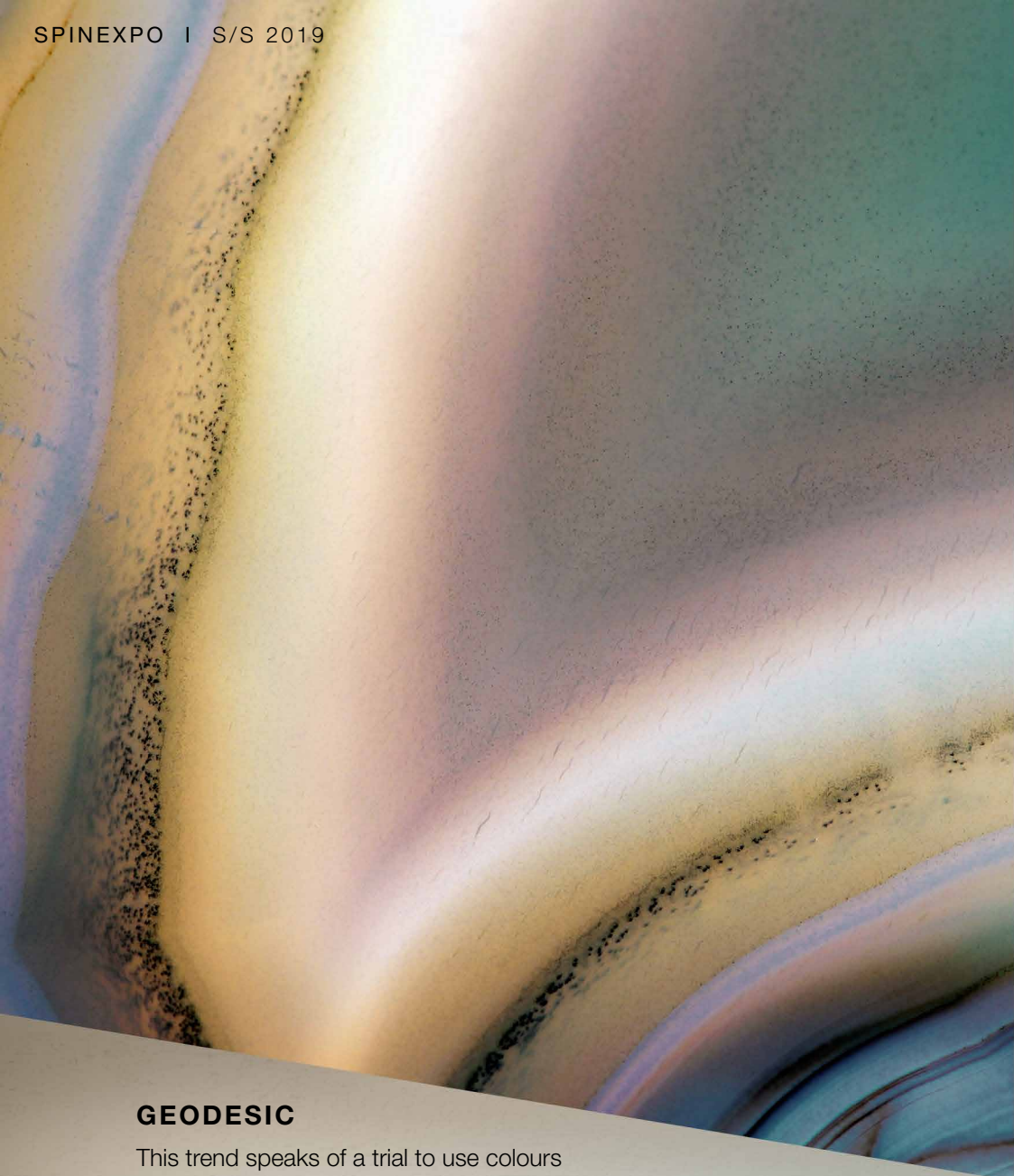
18-2019 TCX  
GRAPE SHAKE



19-5513 TCX  
DARK GREEN







## GEODESIC

This trend speaks of a trial to use colours as an answer to chaotic and multidirectional influences.

The first palette is a modern and attractive palette of colours cohabitating to bring light in a direction fitting a more casual, sportive and relaxed but sophisticated environment.

Colours are not bright but have a real intensity, with a fog green, a soft turquoise and a tamed yellow, cohabitating with stronger beige and taupes and a chestnut brown metallic. The complementing palette mixes a wide variety of tones; new blues, with four earth-inspired colours. Khaki, making its return, rust, wheat yellow and a clematis blue lightening the palette. A story of contrasts, where we see the two proposals melting together.

14-4201 TCX  
LUNAR ROCK



19-4540 TCX  
DEEP LAGOON



19-3951 TCX  
CLEMATIS BLUE



16-0213 TCX  
TEA



17-5335 TCX  
SPECTRA GREEN



18-1142 TCX  
LEATHER BROWN



14-0935 TCX  
JOJOBA



13-0210 TCX  
FOG GREEN



17-0210 TCX  
LODEN FROST



19-0414 TCX  
FOREST NIGHT



17-1109 TCX  
CHINCHILLA



14-1038 TCX  
NEW WHEAT



19-4028 TCX  
INSIGNIA BLUE



19-4029 TCX  
NAVY PEONY







## STRELITZIA

A palette of soft and strong colours, very refined, inspired by dried fruits, plants and minerals, both luminescent and natural, to fit summer crisp and silky materials, together with a counter proposal of bright colours reminiscent of Asian and African Tribal textiles.

This global palette is making hybrids attractive, either minimalist, or folk-inspired, tempting a new dialogue in propositions. The focus is vibrancy, rhythm, and a more sportive palette than the elegant first palette; but combination exudes mystery

19-1524 TCX  
OXBLOOD RED



19-2033 TCX  
ANEMONE



19-3803 TCX  
PLUM KITTEN



19-1327 TCX  
ANDORRA



19-3933 TCX  
MIEVEAL BLUE



18-1354 TCX  
BURNT OCHRE



16-1429 TCX  
SUNBURN



19-1716 TCX  
MAUVE WINE



18-1950 TCX  
JAZZY



18-1536 TCX  
HOT SAUCE



14-0957 TCX  
SPECTRA YELLOW



18-4936 TCX  
FANFARE



15-0341 TCX  
PARROT GREEN



18-3518 TCX  
PATRICIAN PURPLE







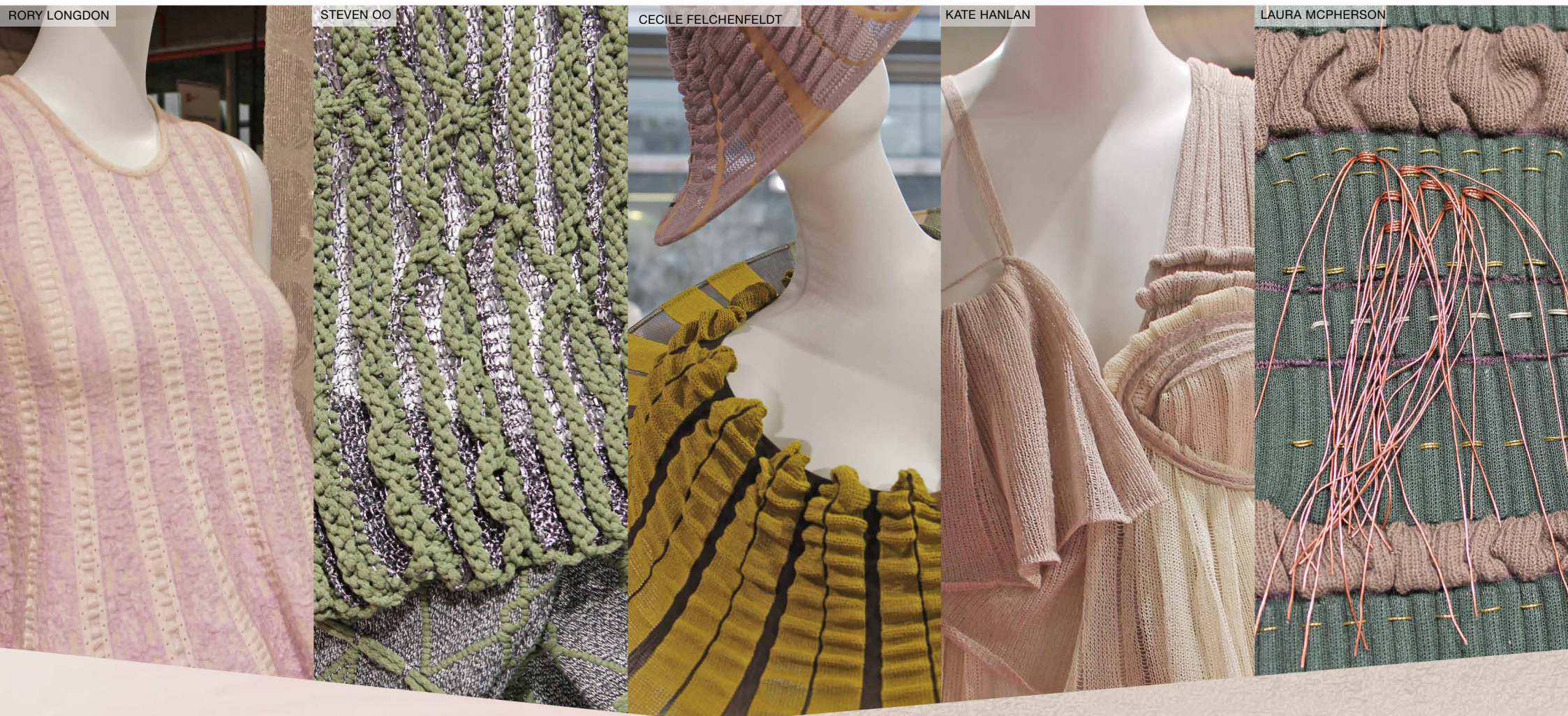
## SUMMARY

A Sensual Future follows on from the “Future Dialogue” discussion held during SPINEXPO™ New York, which focused on how sensuality works as a new design strategy for the future of emotionally driven products, in fashion and home design. A sensual Future is influenced, focused and offers yarns and knitwear direction for the Spring/Summer 2019 inspired by the confused political environment that is a foundation of this century. A Sensual Future embodies how this confusion influences our feelings and reactions, how we are drawn to products that have intimacy and a “feel good” focus. In this confusion, we confront two major directions. Peaceful, straightforward

and harmonious products, with a growing trend towards feminine, elegant designs; and secondly, a rebellion and roughness, using durable materials with conflicting fibres that create texture and colour innovation. We believe that these two directions have a symbiosis, cohabitating and influencing each other. For this reason, we have isolated our first direction from the others as it stands independently, a new rise of harmonious beiges and white, complemented by faded flower tones.

In contrast, metallics are present, but in a soft and subdued way





## DESIGNERS

The featured designers this season come from across the globe, starting with **Rory Longdon**, a British Knitwear designer based in Italy who has gained his experience in the luxury sector by designing knitwear with a very creative and hands on approach. Shanghai based **Steven Oo** refers to his personal knitwear designs as knitwear architecture because of a deeply held interest in surface textures, structural silhouettes and innovative stitches. Paris based **Cecile Felchenfeldt** imagined a huge game board and in her

statement “NO SUMMER WITHOUT A HAT” the coloured surface became a catwalk for hats and patterns giving the yarns and their different qualities an inspiring, playful scenery. **Kate Hanlan** runs a studio in Dublin where she works on sculptural knitwear pieces through to home textiles and garment design. The featured swatch designers from Britain included **Kemi Clark**, **Laura McPherson** and the duo behind **M.o.h.K.** **Helga Matos** and **Odina Keim**.





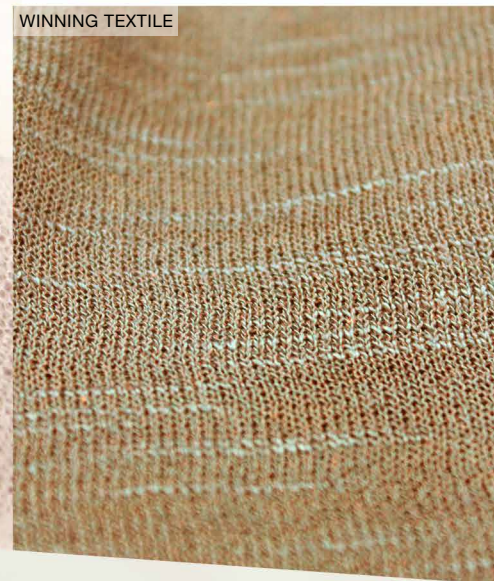
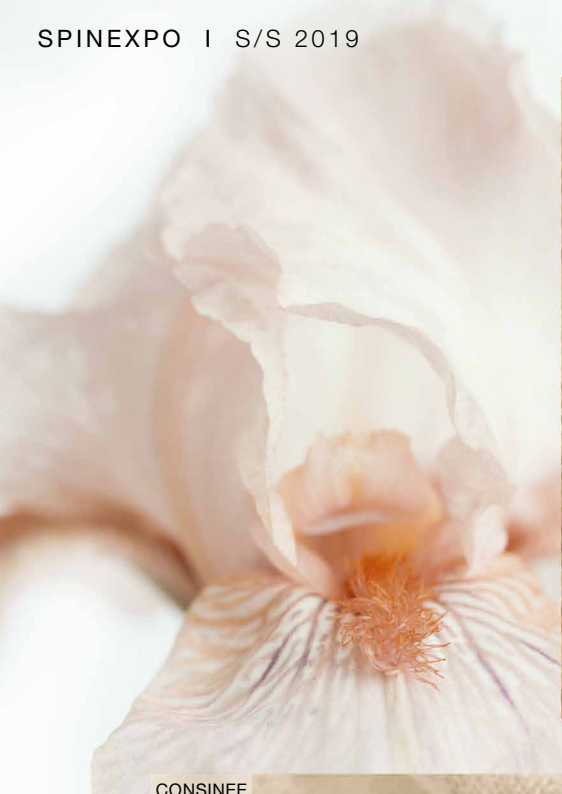
## WINCHESTER SCHOOL OF ARTS

A specific trend area was dedicated to the interpretation, by second year students from the textile and knitwear courses of Winchester School of Arts, of SPINEXPO five directions for Spring/Summer 2019.

The students' drive is to consider the future of textiles and work on ways to combine different disciplines to create forward thinking concepts and textiles. By researching new technologies but not forgetting traditional techniques, the focus is to create fabrics and ideas, which are innovative and well considered from, start to finish.

For Radiance, the first direction, students have been studying light and shadow and the difference between the different layers, which make up the fabric. The second direction inspired them to experiment movement, structure and versatility while the third direction focused on a sense of comfort through the use of natural and raw yarns.





## Fine Texture

Micro-sized irregularities in the new spring yarns update surfaces for a softly washed look. Gossamer cashmere and tiny flecks of color create delicate knits that seem to mimic the fragile beauty of summer petals.





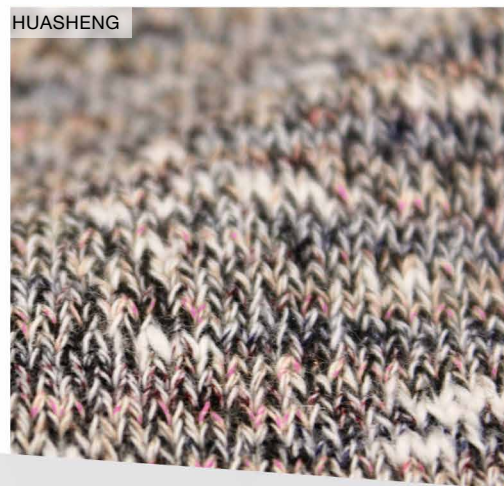
YARNS & COLORS



SHILEAD



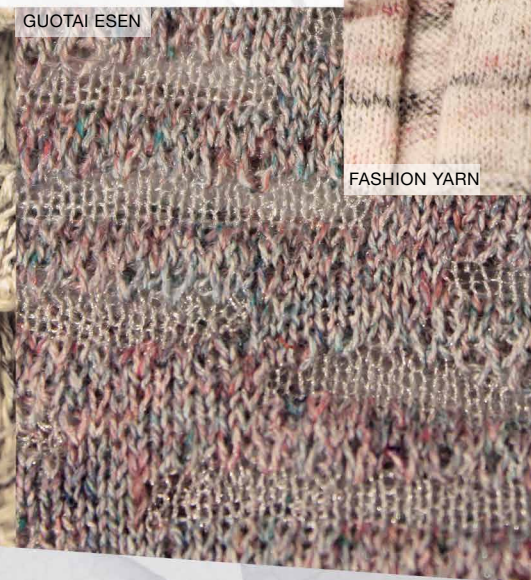
EASTAR



HUASHENG



BEST LEADER



GUOTAI ESEN

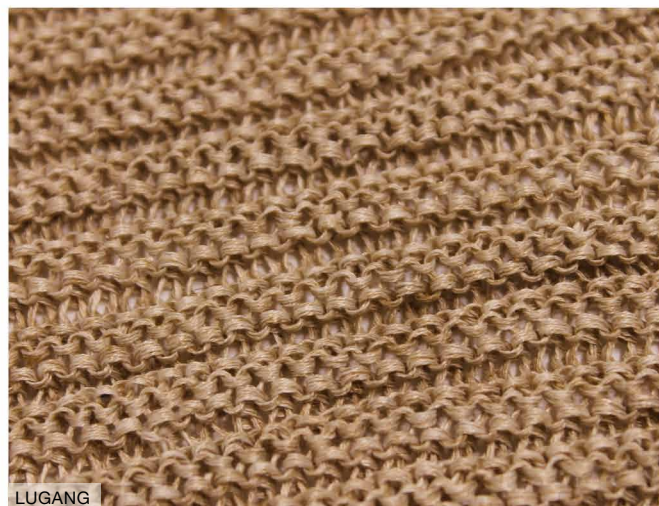


FASHION YARN

## Speckled Bloom

Yarns appear to have been taken into the artist's studio and finely spattered with colour. Presented in both fine and chunky gauge, the mélange and speckled yarns are finely slubbed for additional texture that enhances the distinctive colours.

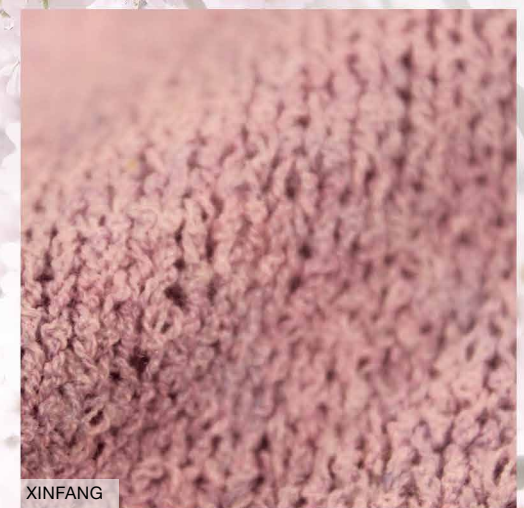
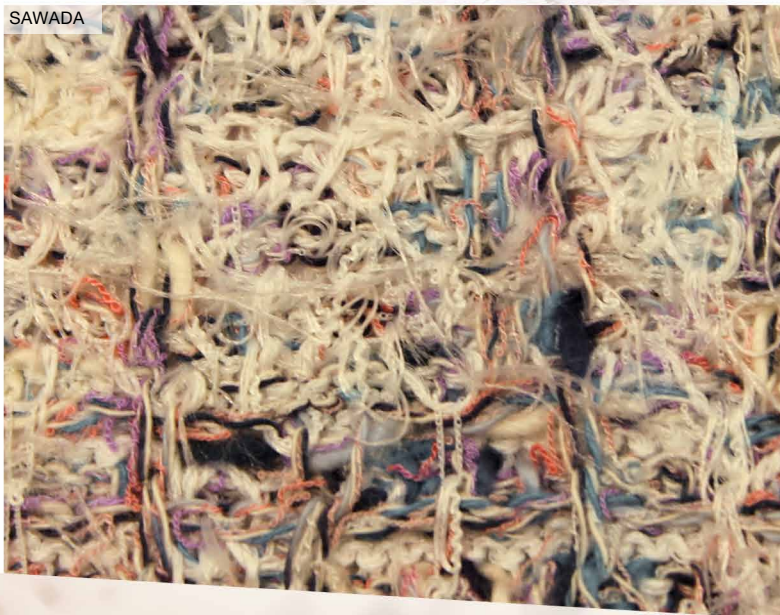
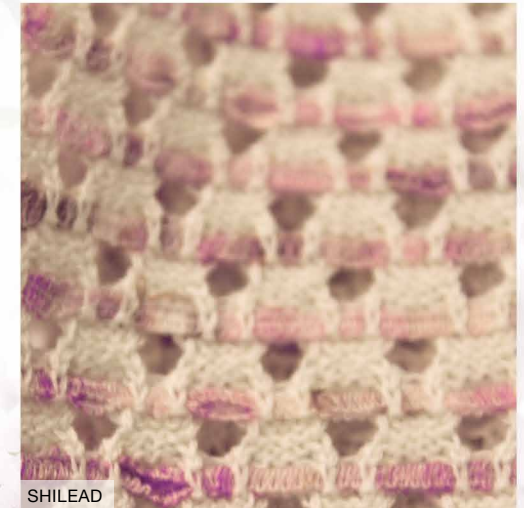
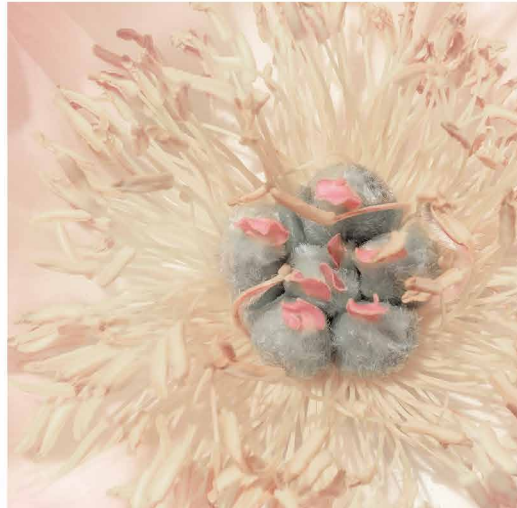




## Soft Rustic

Summer yarns take direction from cellulose structures focusing our attention on the beauty of raw fibers. Using sustainable materials like linen and hemp in these rustic blends bring a distinctive stranded appearance.





## Feather Petal

The tender aspects of frothy petals inspire new yarn directions as edges are frayed and fringed. Oversized ribbon yarns expose their true texture when densely knitted, creating a plush and padded surface.





LUGANG



SHILEAD



GUOTAI ESEN



BEST LEADER



TOP LINE

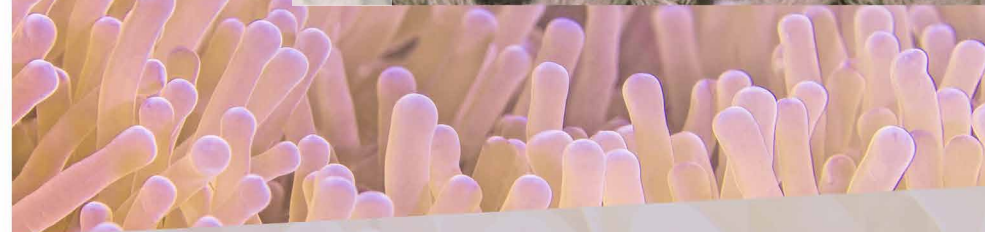
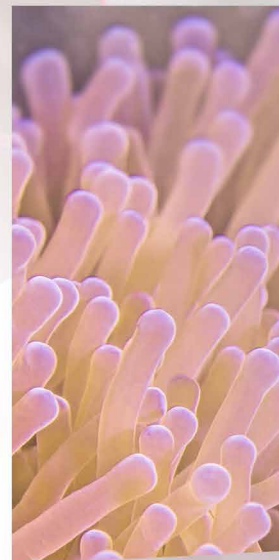
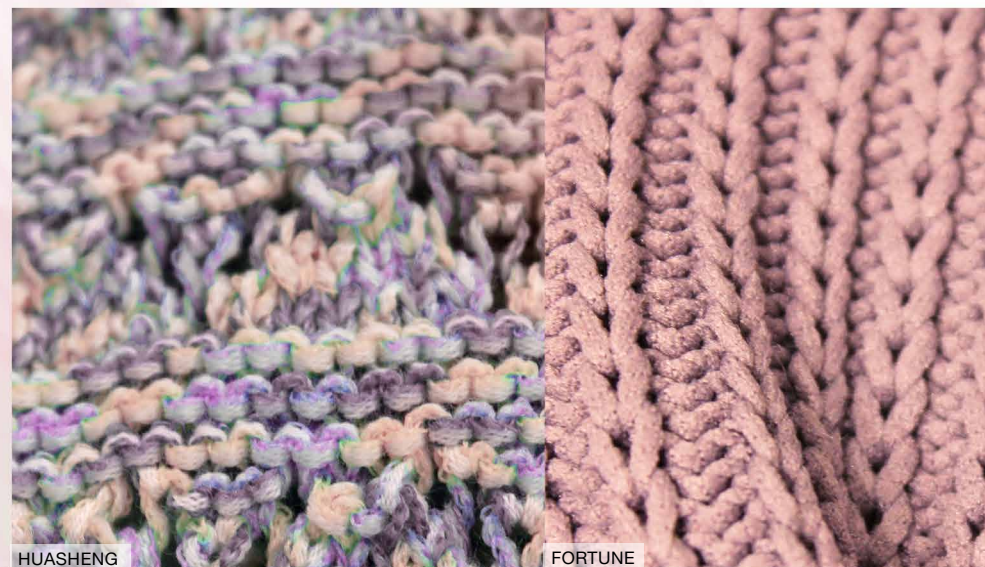
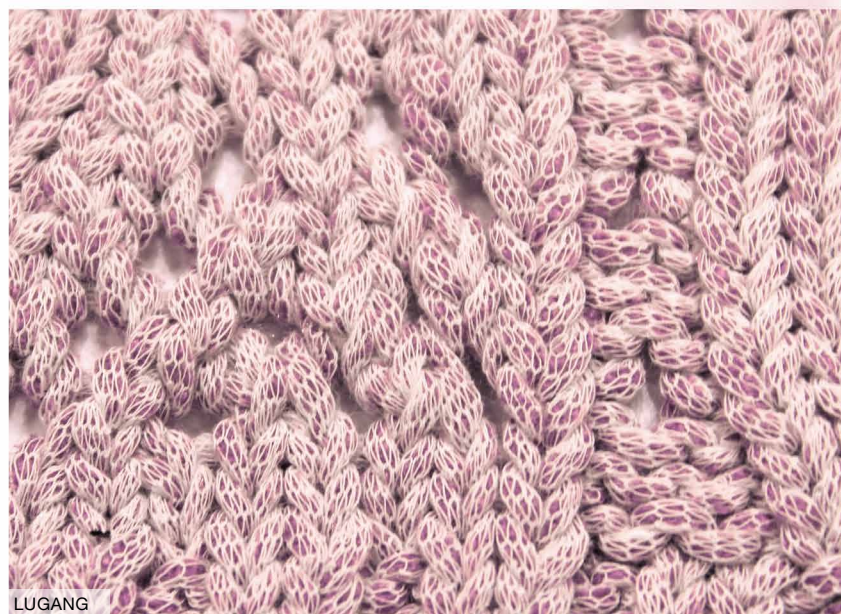
SHILEAD



## Plush Touch

Traditional fall yarns of velour and chenille are updated for spring in lighter-weight versions, introducing a new novelty yarn for spring. The opulent look of these knits is further enhanced by the introduction of metallic fibers.





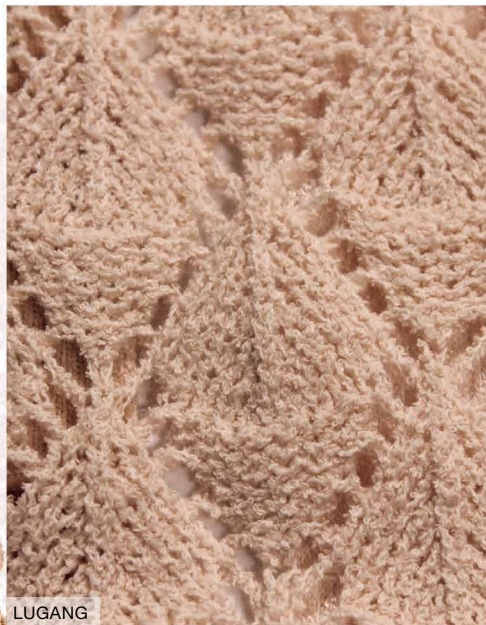
## Soft Structure

Cylindrical petals and undersea corals inspire rounded yarns that are softly padded. Chain-yarns are filled with spongy fibers that hold the stitch structure perfectly. Surface interest is heightened by colour-play via contrasting fiber fill and space-dyed treatments.





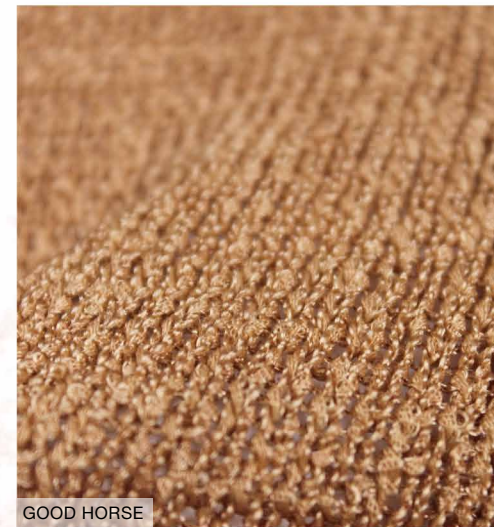
ZHONGXIN



LUGANG



CONSINEE



GOOD HORSE



XINFANG



TOP LINE

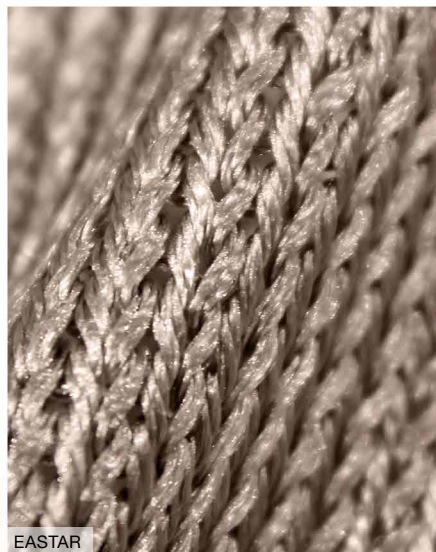


GUOTAI ESEN

## Powdered Boucle

The softly powdered surfaces found in the trend direction Radiance is reflected in the new spring boucle yarns. Delicately textured and softly spun, these versatile yarns inspire both casual and dressy styles for knitwear dressing.





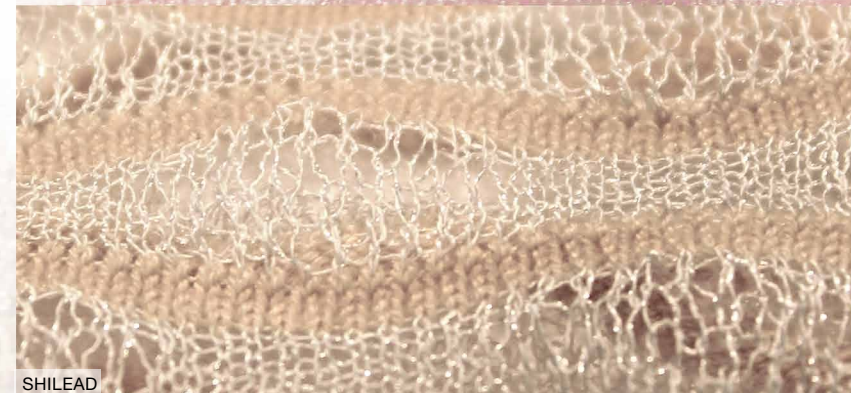
EASTAR



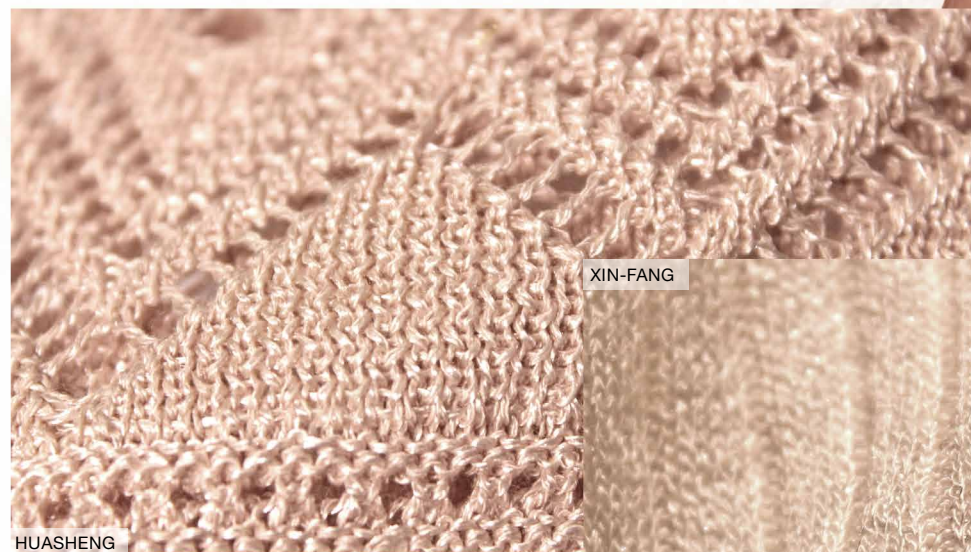
BEST SHAN



LUGANG



SHILEAD



XIN-FANG

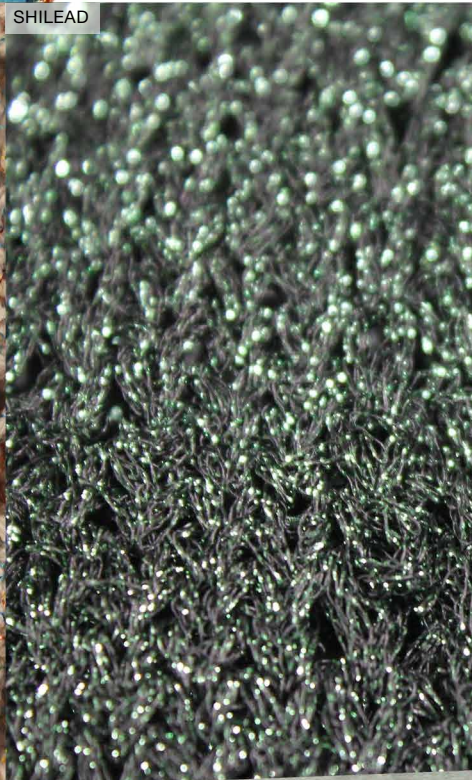
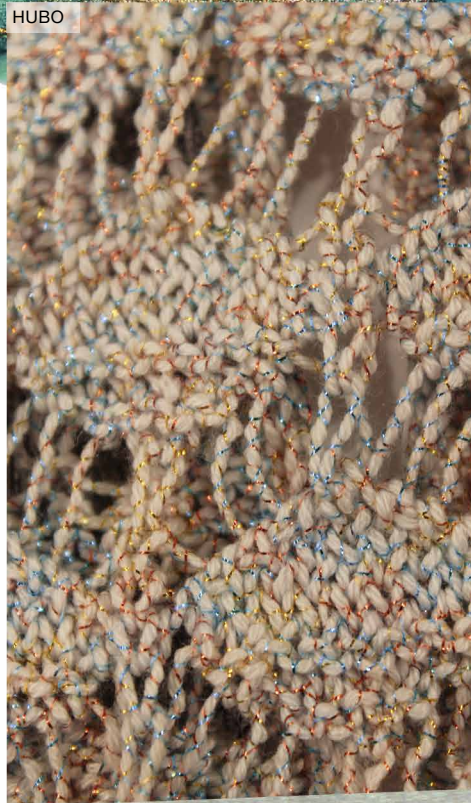
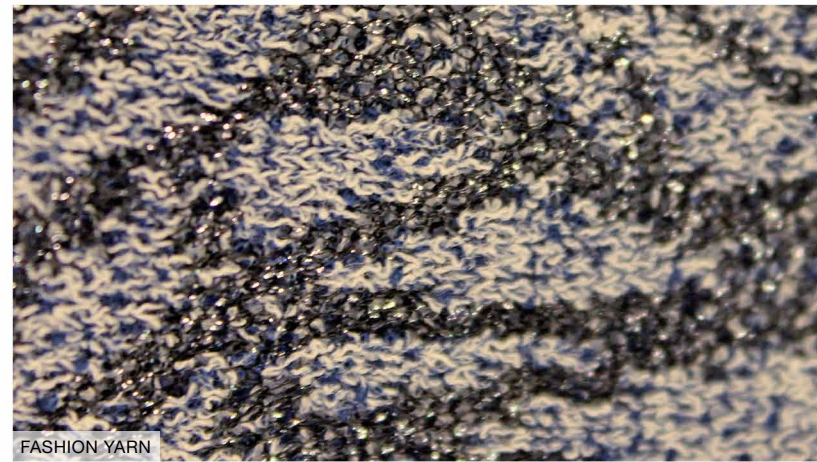
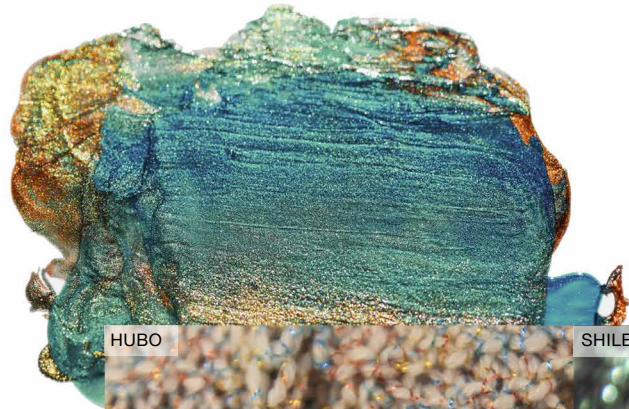
HUASHENG



## Glossy Finish

Summer yarns have a subtle gloss, as fine yarns are coated for an updated take on technical looks. The strands are faintly sparkling and shimmering on the surface allowing for a new direction in knitwear to be explored with these light-reflecting properties.





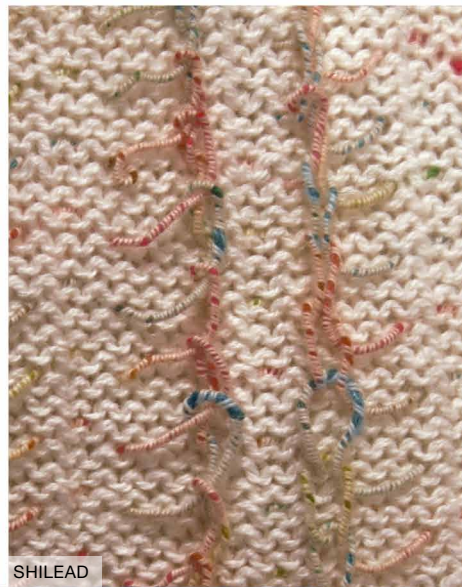
## Metallic Lights

Once used only for the holiday season, metallic yarns are now considered a year-round staple. The new spring offering is advanced by introducing metallics into novelty yarns as the sparking fibers are wrapped and twisted for a glittering surface effect.

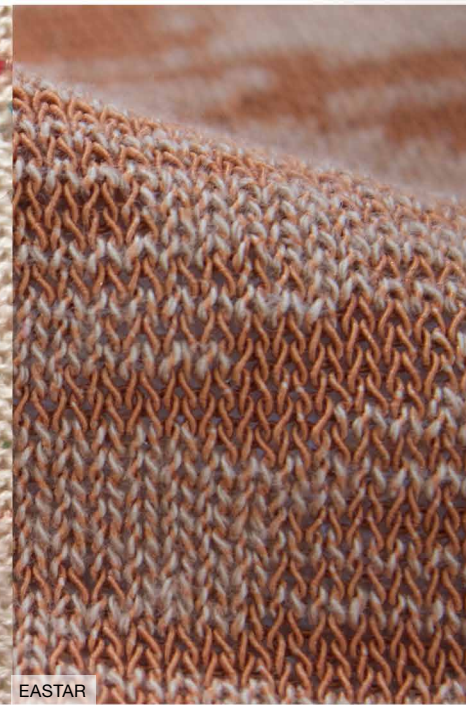




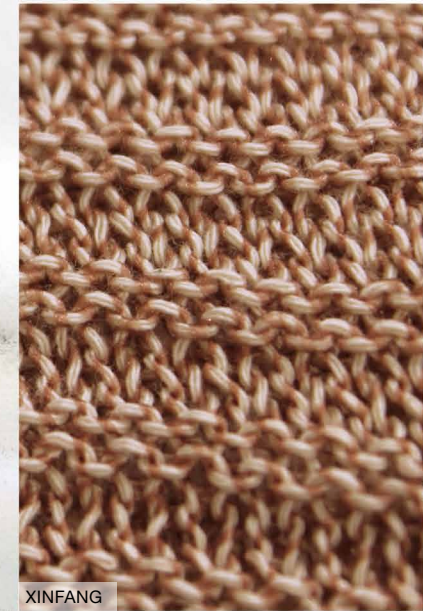
SHI-KWAN



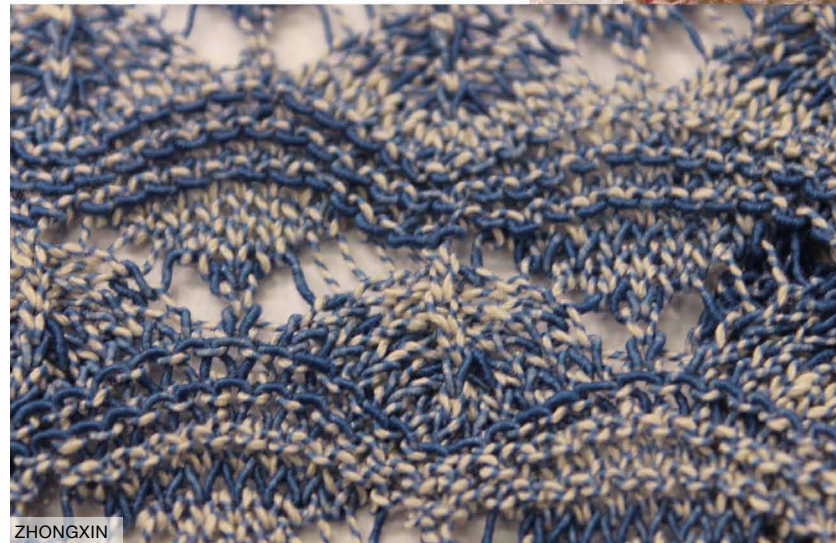
SHILEAD



EASTAR



XINFANG



ZHONGXIN



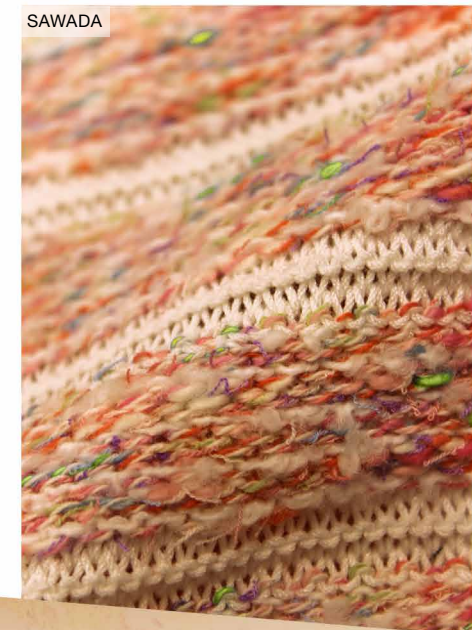
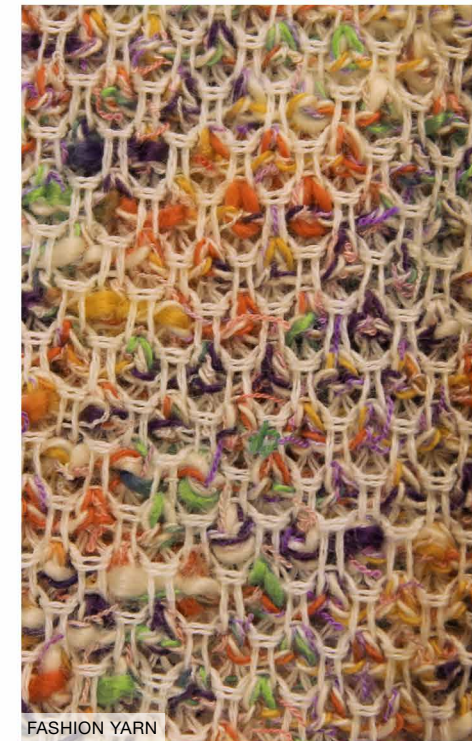
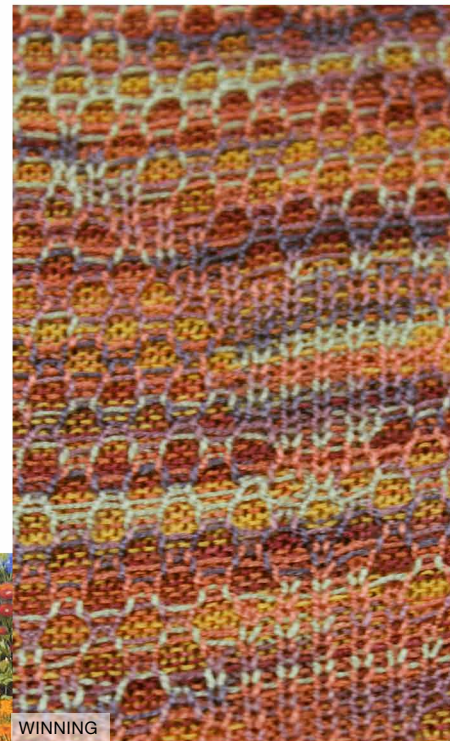
BEST LEADER



## Double Depth

Contrasting matte and glossy surface aspects are combined into novelty summer yarns. Yarns appear to be wrapped and corded as a macro view shows the individual strands circling the core fibers and contrasting colours propose further distinction.





## Garden Party

The joyful explosion of colour found in a fully blooming garden at the height of summer is re-interpreted into this season's yarns which are speckled, marled and slubbed in a rainbow of texture and colour for a happy and upbeat feeling.