

SPRING/SUMMER 2020



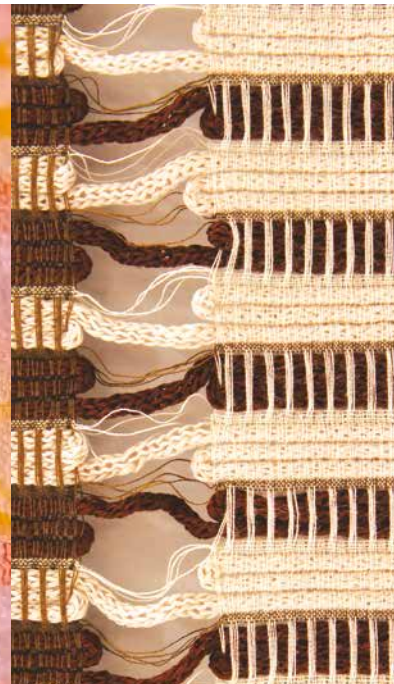
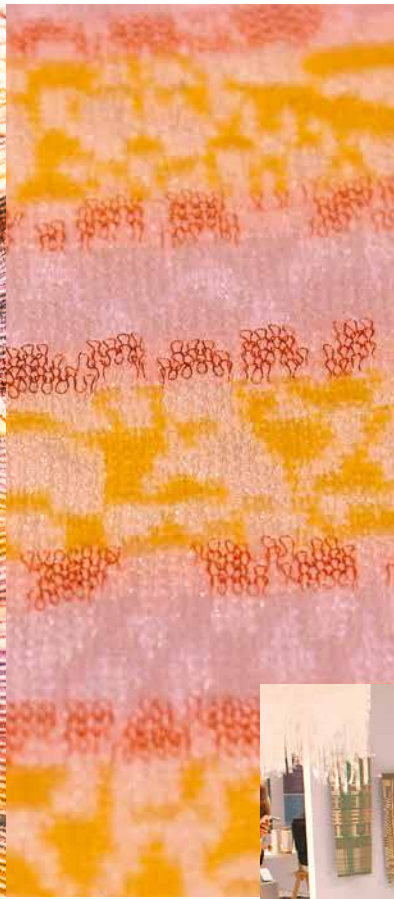
SPINEXPO™ WRAP

SPRING/SUMMER 2020

IN BETWEEN

SPINEXPO™ IS THE LEADING INTERNATIONAL SOURCING EXHIBITION DEDICATED TO PROMOTING INNOVATIONS IN YARNS, FIBRES AND KNITWEAR

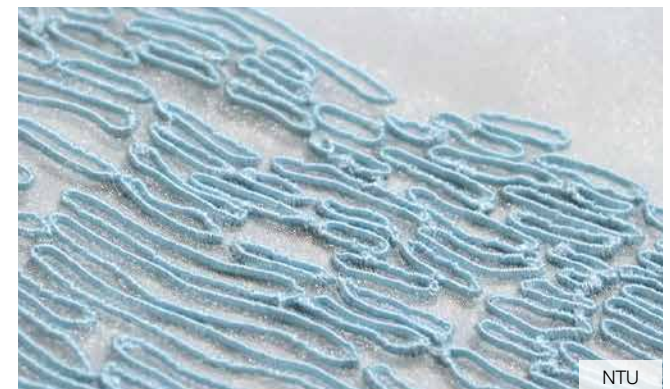
Show Summary



SPINEXPO™ Shanghai was held at the World Expo Centre in Pudong, Shanghai, on 5th, 6th and 7th March 2019. This Spring/Summer 2020 edition presented the collections of 183 exhibitors, including 19 knitwear manufacturers. We welcomed 11 371 visitors and 3 369 entries over two days, bringing the total number of visitors to 14 740, which is a record and all the more impressive as SPINEXPO™ was the only event being held in the exhibition center, meaning that these numbers were not swelled by visitors to other events.



SPINEXPO™ & Students



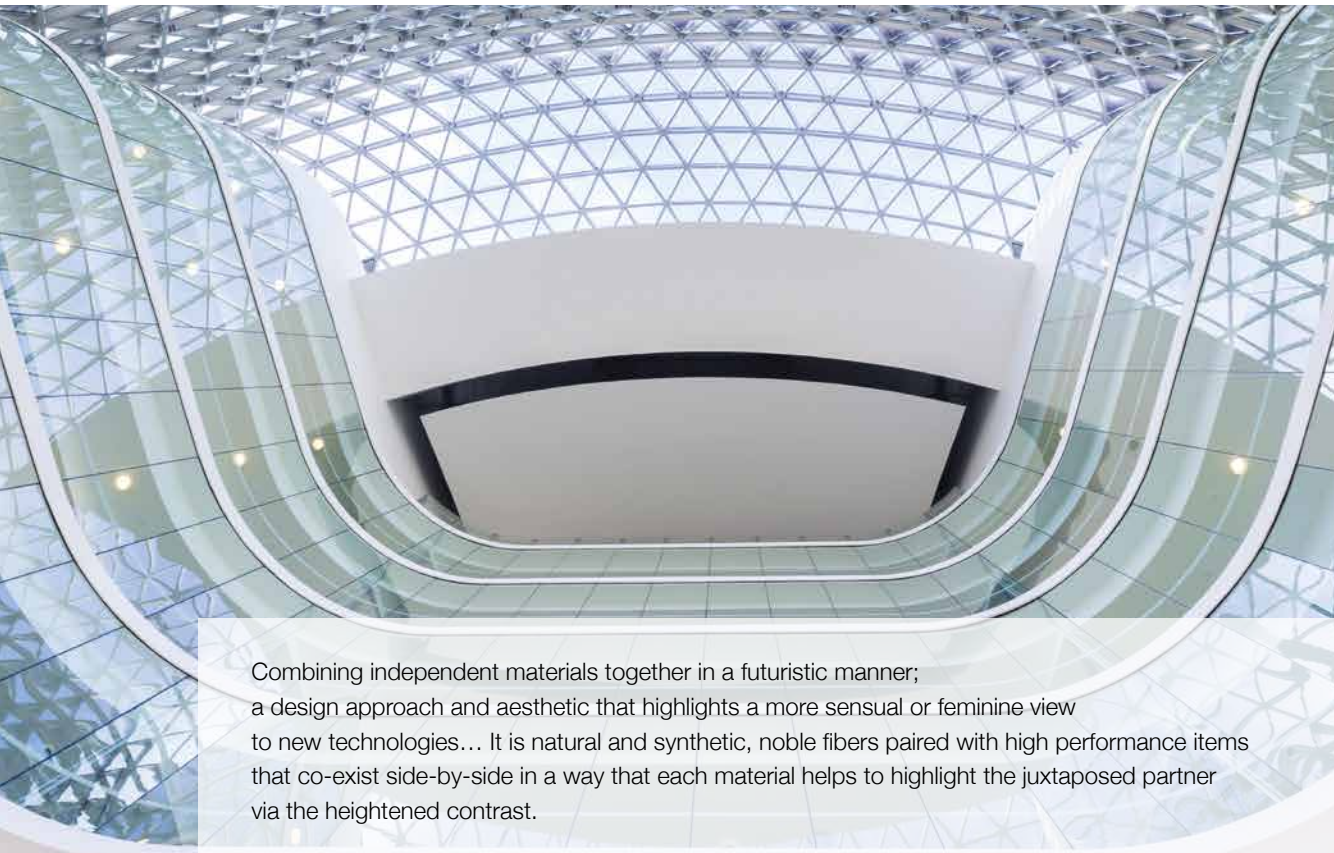
Encouraging creativity and promoting education about new technologies is at the heart of every SPINEXPO™ show. In this vein we collaborated with Nottingham Trent University and Winchester School of Art. The work was exhibited at the Paris and Shanghai SPINEXPO™ shows and in addition we hosted three students for a week in Shanghai.

The students from NTU chose to focus on three of the five trend directions, Organic Futurism, Human Centric and Modern Vintage. The garments and fabrics exhibited were created by students from BA Textile Design, BA Fashion Knitwear Design and Knitted Textiles, MA Fashion Knitwear Design and MA Textile Design Innovation.

The level 2 Knitwear students from Winchester followed the trend Modern Vintage and produced a collection of fabrics, which were then used to create collaborative collection of garments.

Organic Futurism

USING TRADITIONAL MATERIALS IN AN INNOVATIVE WAY



Combining independent materials together in a futuristic manner; a design approach and aesthetic that highlights a more sensual or feminine view to new technologies... It is natural and synthetic, noble fibers paired with high performance items that co-exist side-by-side in a way that each material helps to highlight the juxtaposed partner via the heightened contrast.



18-0513 TCX
BUNGEE CORD



16-3905 TCX
LILAC GRAY



13-2803 TCX
PALE LILAC



17-4730 TCX
CANEEL BAY



18-1705 TCX
ARCTIC DUSK



18-0332 TCX
GRASS HOPPER



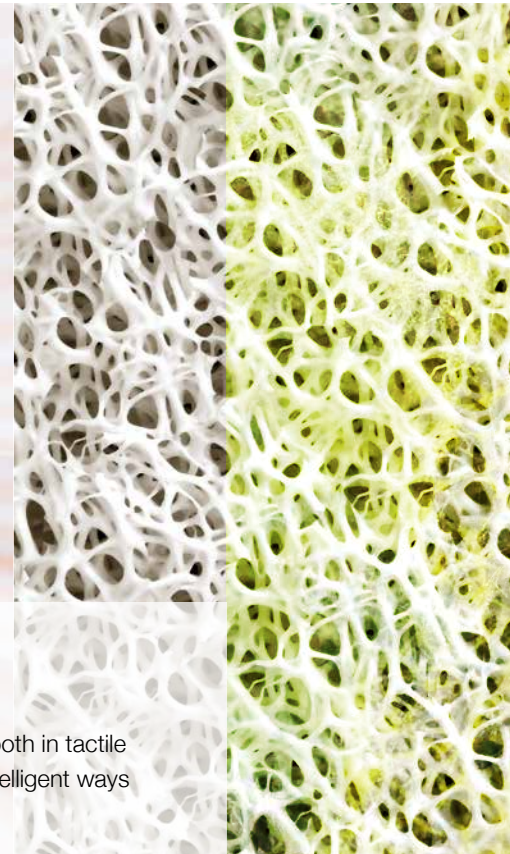
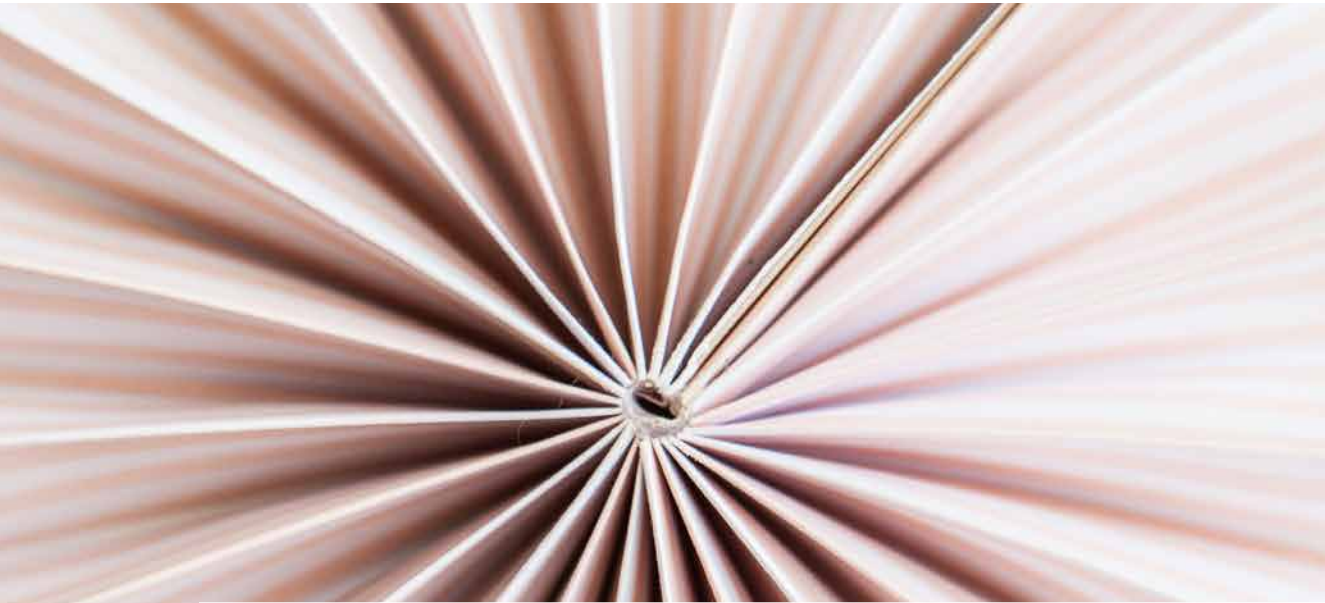
15-4008 TCX
BLUE FOG



11-4001 TCX
BRILLIANT WHITE

Human Centric

THE BODY AS A TEMPLE...



A METHOD OF DELIBERATE DESIGN AND DEVELOPMENT
THAT ADDRESSES THE HUMAN NEEDS WITH INTELLIGENCE AND COMPASSION.

Human centric design require great versatility in both the yarns and garment design. It will be protective both in tactile ways (design features that allow you to sculpt the garment in multiple ways as needed) and in Artificial Intelligent ways via wearable technology (monitoring heart rates, temperature, sleep patterns, light pollution...)



12-0804 TCX
CLOUD CREAM



16-1342 TCX
BUCKSKIN



16-1720 TCX
STRAWBERRY ICE



18-3910 TCX
FOLKSTONE GRAY



13-3920 TCX
HALOGEN BLUE



12-5409 TCX
FAIR AQUA



13-0540 TCX
WILD LIME



19-0403 TCX
SEA TURTLE

Material Innovation

THE NEWEST INNOVATIONS INFLUENCING YARNS...

AND TEXTILES FROM THE FIELDS OF TECHNOLOGY AND MEDICINE

New yarns for the technology and medical fields should be a focus for spinners looking to capture new parts of the market that are not limited to the fashion industry. How to work with conductive fibers and practical applications for transparent and cellulosic yarns within these two industries in addition to the traditional fashion industry.



14-3905 TCX
LAVENDER BLUE



17-3808 TCX
NIRVANA



17-1718 TCX
DUSTY ROSE



19-1224 TCX
FONDUE FUDGE



13-1031 TCX
APRICOT SHERBET



17-1418 TCX
GINGER SNAP



16-5123 TCX
BALTIC



14-4516 TCX
PETIT FOUR

Bio Construction

USING LOCAL MATERIALS THAT ARE IN HARMONY...



WITH THE ENVIRONMENT; LOW WASTE, NO TOXIC WASTE

Concentration focused on environmentally friendly materials and dyes.
Fibers like Linen, Hemp, Bamboo and Tencel are sustainable but can have dirty processing-
new clean ways of processing these earth friendly fibers is key.
Non toxic colors and printing processes should be a key focus.



15-4702 TCX
PURITAN GRAY



15-0318 TCX
SAGE GREEN



16-0928 TCX
CURRY



18-0629 TCX
LIZARD



12-0000 TCX
WHITE SWAN



19-1250 TCX
PICANTE



19-4027 TCX
ESTATE BLUE



19-1110 TCX
CHOCOLATE PLUM

Modern Vintage

MAKING USE OF LEFTOVER FIBERS IN BOTH YARNS AND GARMENTS

New ways of processing recycled textiles and discarded clothing is imperative to stop the spread of landfills and waste from the textile sector.

Mills and spinners must find innovative ways to use their leftover yarns in stock, perhaps with the help of working with designers dedicated to the task.



17-1044 TCX
CHIPMUNK



19-3731 TCX
PARACHUTE PURPLE



16-1164 TCX
ORANGE PEPPER



17-1755 TCX
PARADISE PINK



14-0852 TCX
FREESIA



18-4148 TCX
VICTORIA BLUE



16-4535 TCX
BLUE ATOLL



19-4203 TCX
MOONLESS LIGHT



XINNUO



YIWAGOE



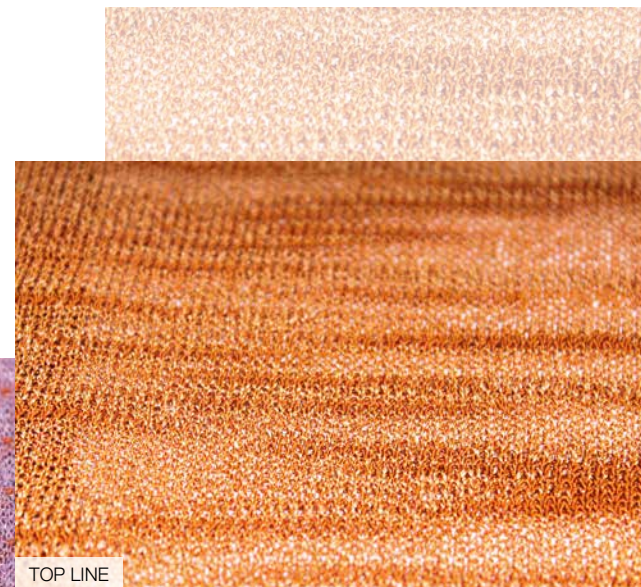
HUBO



AA GLOBAL



DELL'OLIVO



TOP LINE

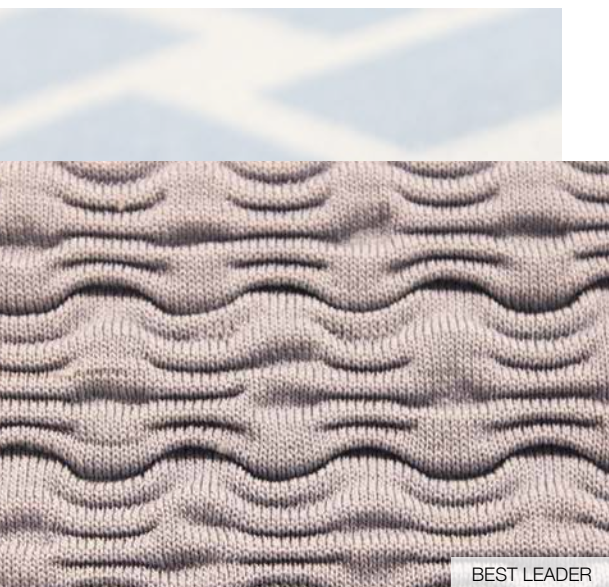


SHI KWAN



Featherweight Sheers

Gossamer knits are presented for spring in a variety of ways, from clear and transparent synthetics to fine linen and cotton slubbed yarns. Mini-jacquards, fine variegated ribs and softly ruched stitches take these delicate surfaces into new directions.



BEST LEADER



ZIXIN



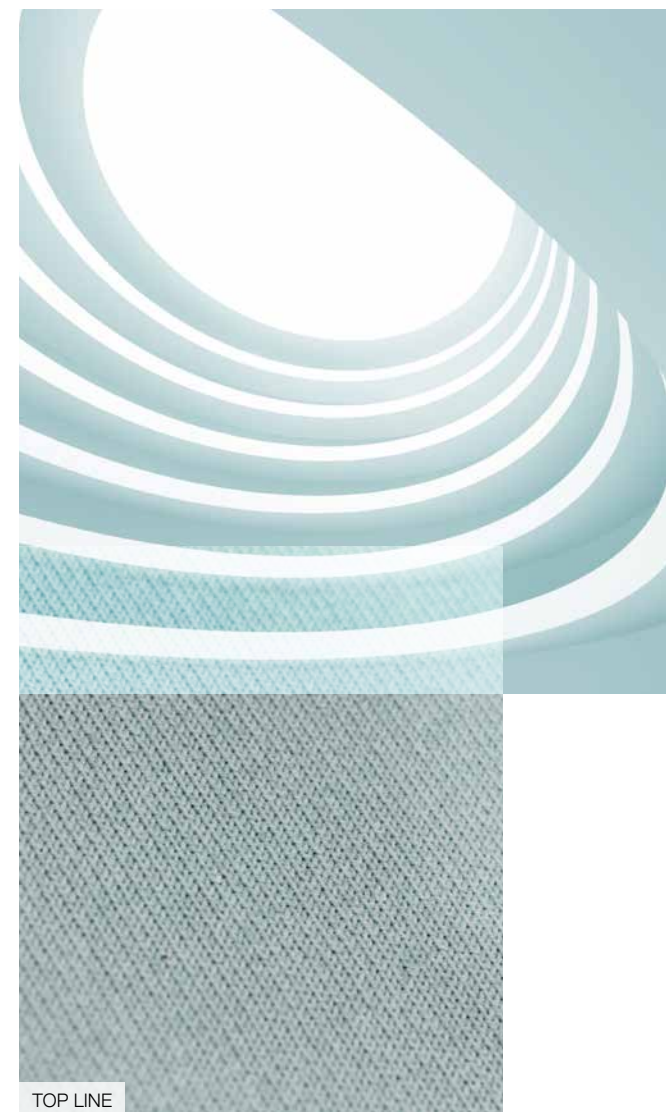
JINMIAO



BEST SHAN



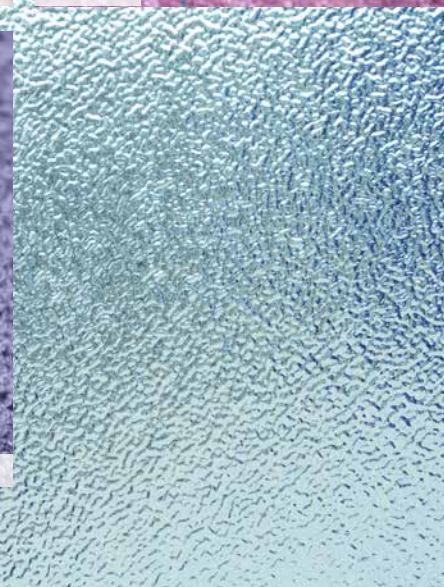
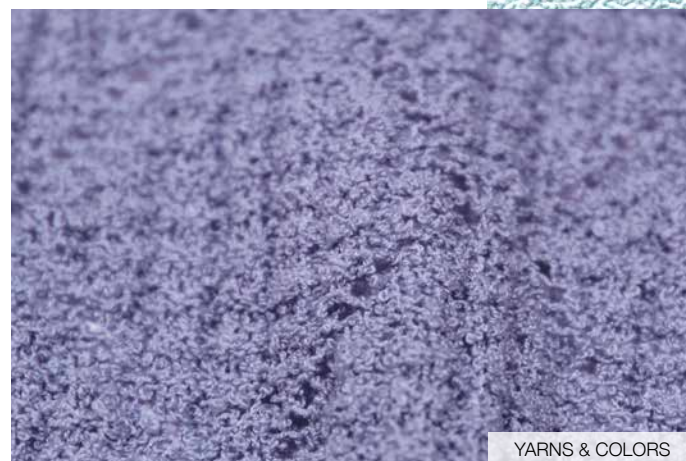
ZHONGDING



TOP LINE

Compact & Clean

Transitional yarns are the true workhorse of knitwear and a key item for many designers this year. Simple and clean looks prevailed in new cashmere and cotton blends which move easily from season to season.



Micro 3D & Crepe effects

Sophisticated subtlety influences knitwear this season and inspires novelty ribbon-yarns and fine gauge synthetic blends with a spongy aspect. Tiny blister and tuck stitches heighten this surface effect.



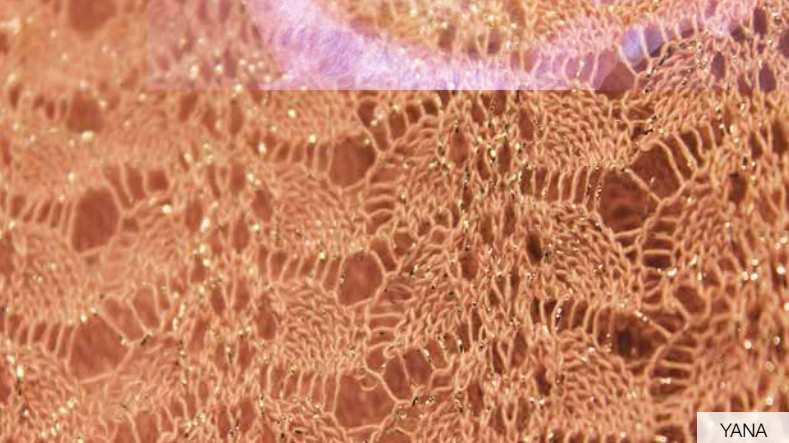
XIANYUE - DELL'OLIVO



LAILIA



MEADOWBROOK



YANA



SHILEAD



HUASHENG

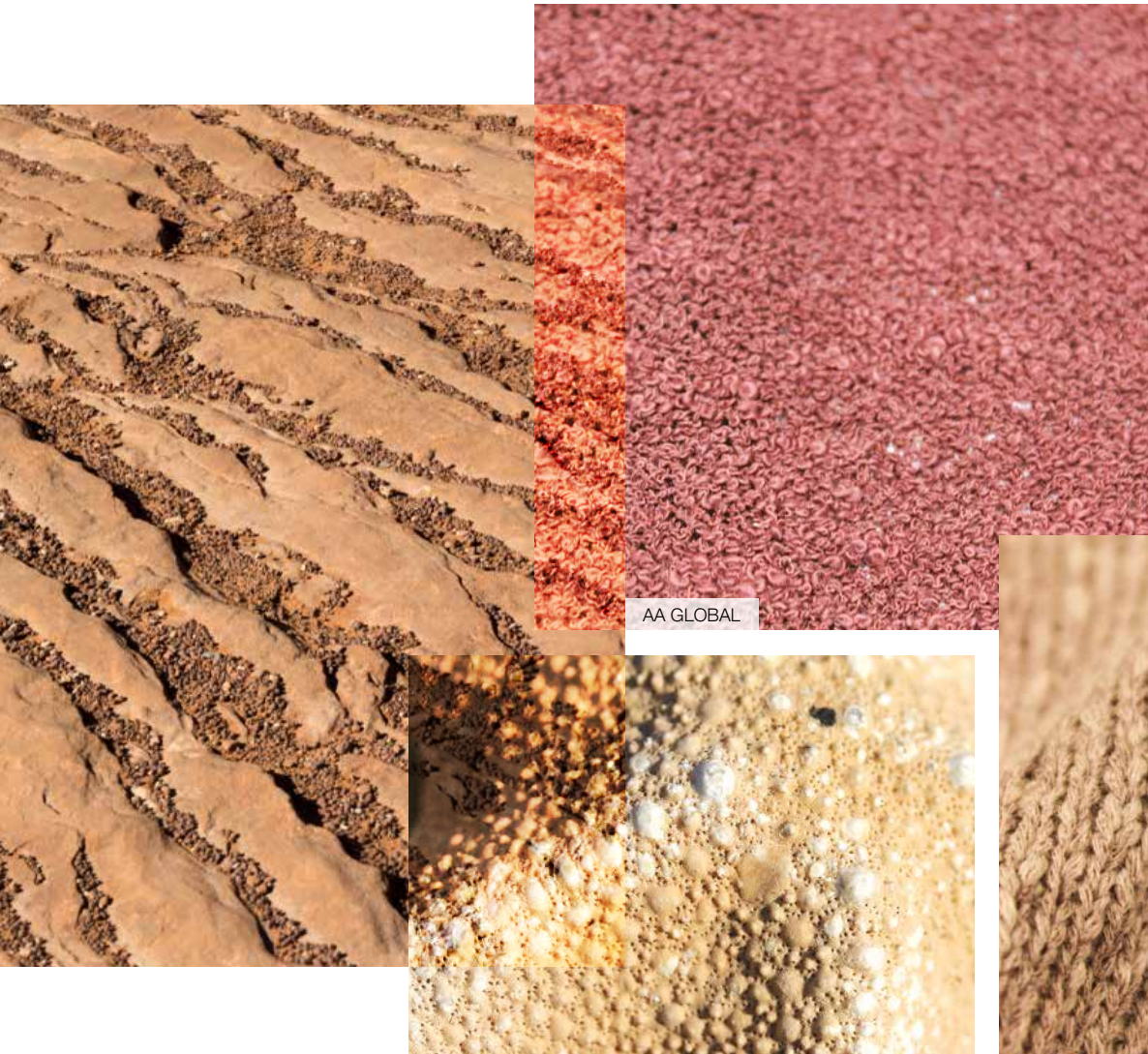
Sophisticated Metallics

Metallics are introduced this season in a more elegant manner than in the past as spinners find ways to offer them in ultra-fine gauge yarns. With an almost dusted or gritty application, the marbled and multicolored versions were especially striking.

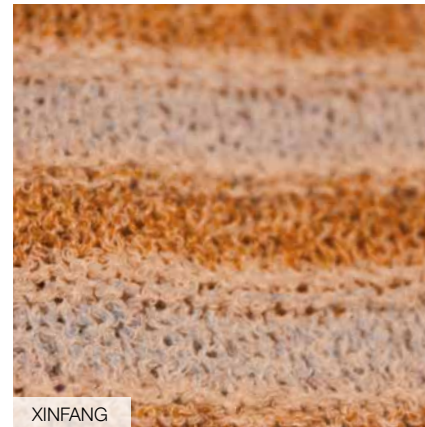


Refined Chenille

Chenille continues to evolve in updated ways, indicating it is still a strong seller for a lot of mills. These spring versions have been sheared down to a light and downy pile and paired with simple open stitches for further novelty



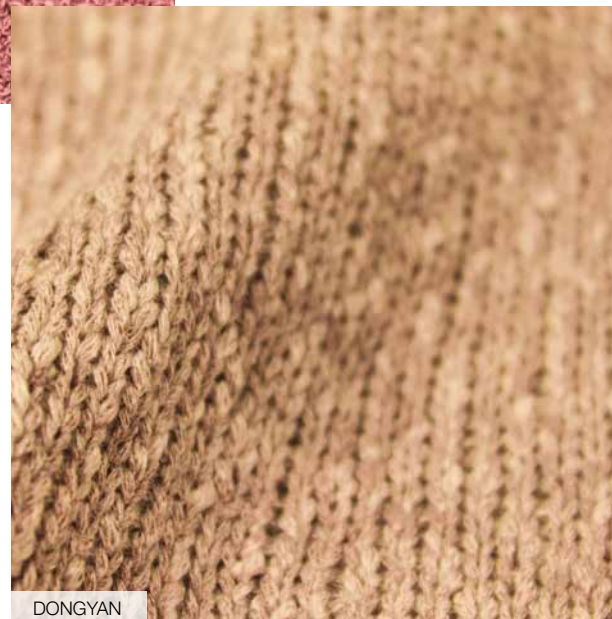
AA GLOBAL



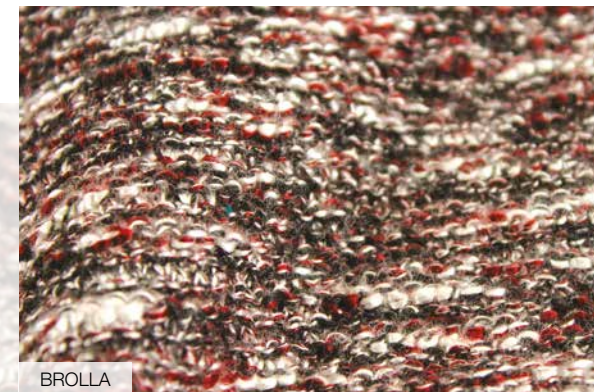
XINFANG



DELL'OLIVO



DONGYAN



BROLLA



YARNS & COLORS

Slubbed Towelling

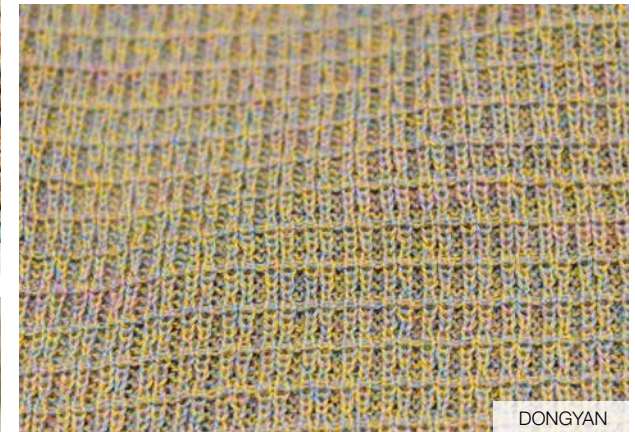
Novelty yarns in natural blends favored slubbed yarns with a terry-cloth effect. Evoking a softly worn and well-loved surface, these yarns are the perfect item for easy beach separates and casual summer layering pieces.



BIELLA YARN



XINYA



DONGYAN



ESQUEL



AA GLOBAL



ZHONGXIN



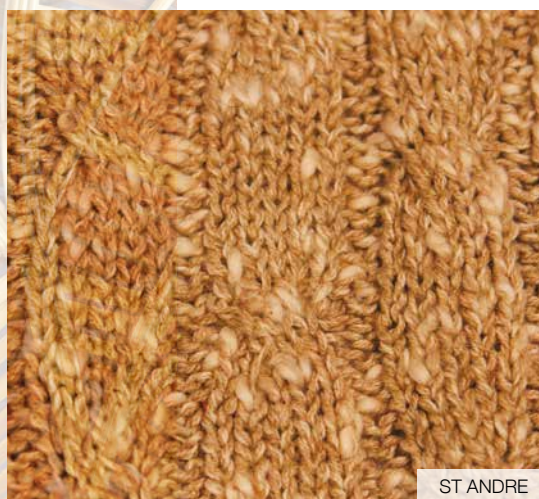
BROLLA

Marbled and Blurred

Heathered yarns are renewed via subdued yet revitalized color combos; Muted tones of olive, sepia and taupe combine energetically to create new directions for fine gauge mélange.



BROLLA



ST ANDRE



HUBO



TAKIZEN

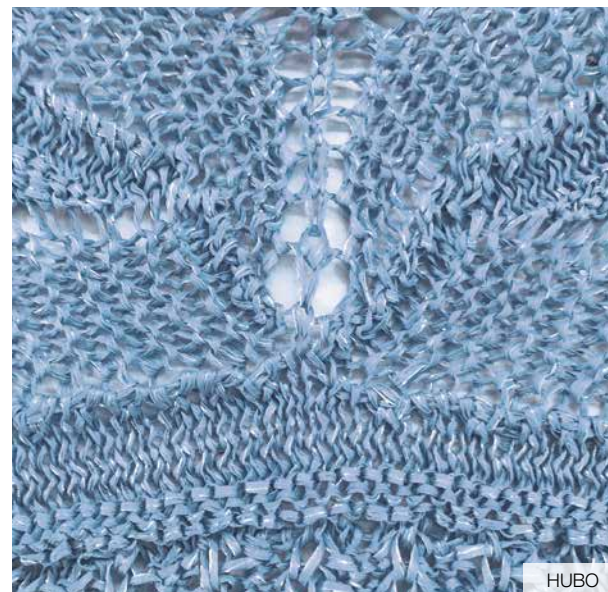
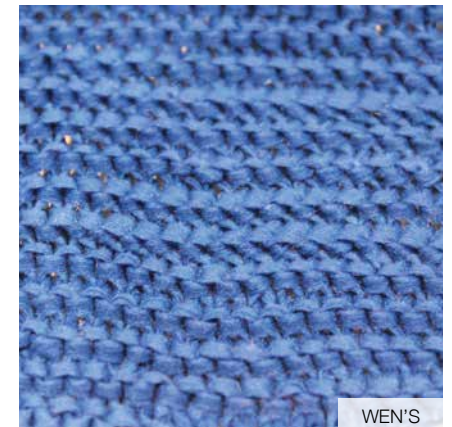
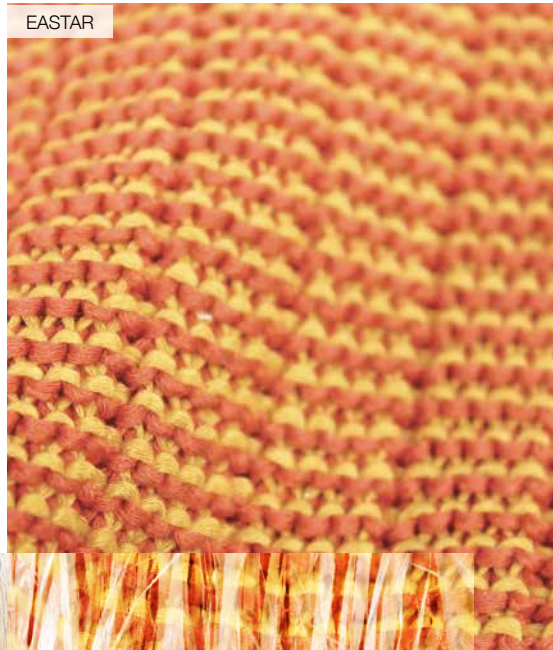


ZHONGXIN



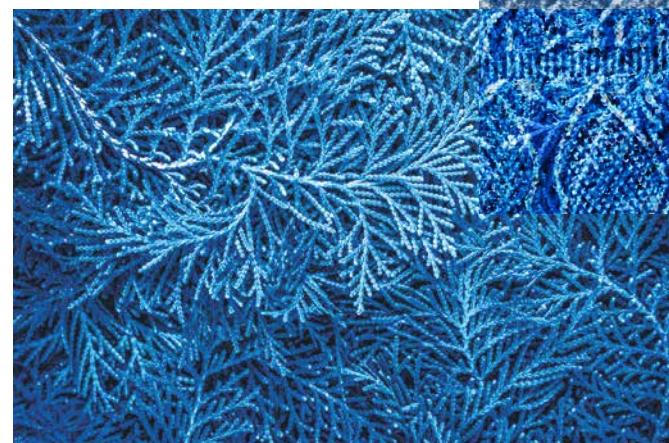
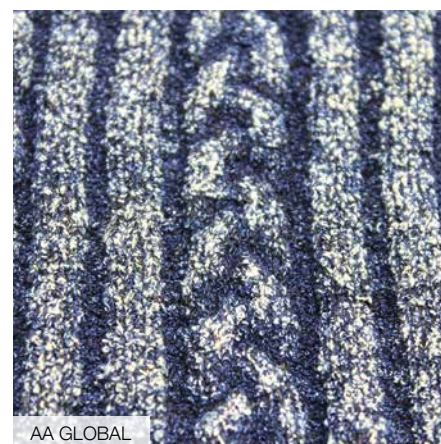
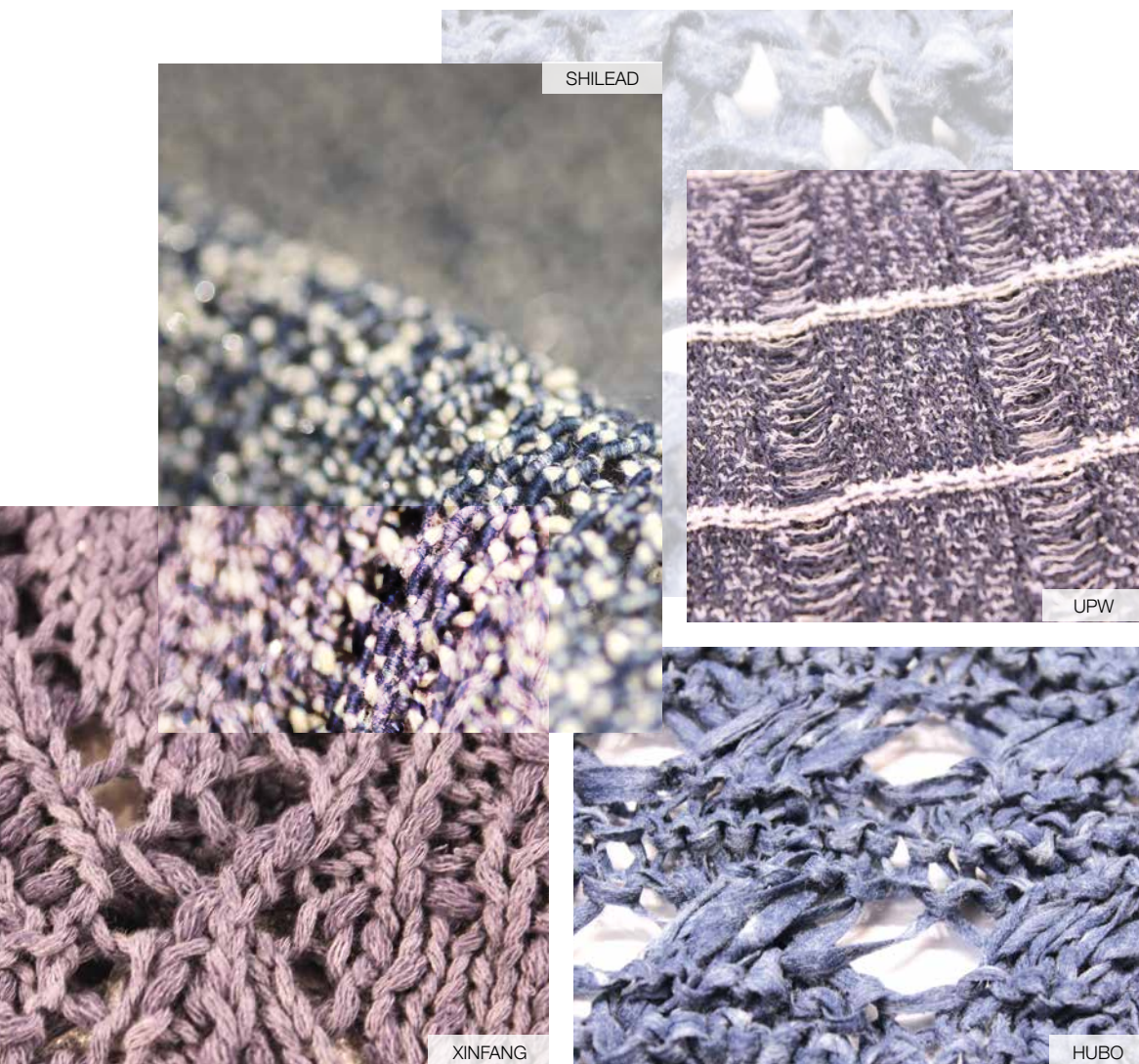
New Linen Blends

Flaxen yarns are invigorated by new combinations of fibers that add softness to the hand-feel; Plush neps and slubbed aspects add to the novelty look of the chunky yarns.



Paper Construction

Tape yarns are influenced by the look and feel of shredded paper as mills play with new ways to create this tactile look. Raffia yarns and felted techniques help to further the eco-feel of this item.

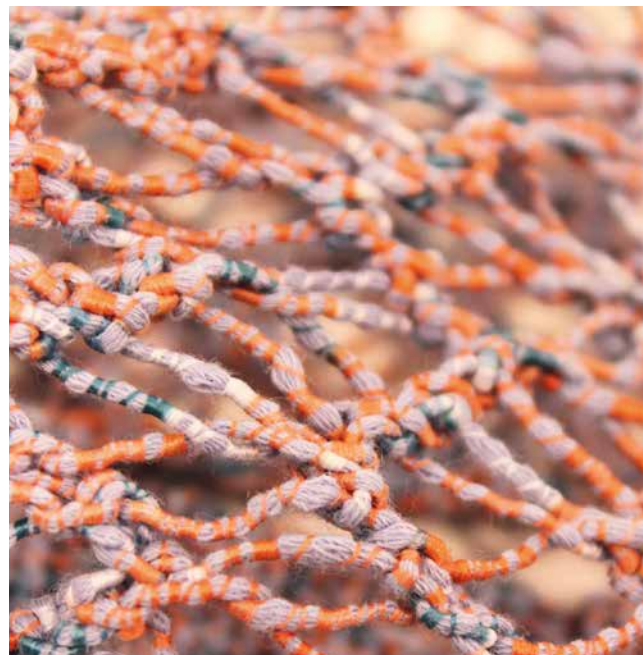


Denim & Indigo

This season SPINEXPO presented “KnittingIndigo” with AA Global to highlight their special developments in denim and indigo yarns. Many other spinners also had beautiful new developments, highlighting the importance of this direction for the knitwear industry.



YOU MEI



ZHONGXIN



MILLEFI



HUASHENG

BROLLA



AA GLOBAL

Wrapped & Corded

Corded yarns with a matte luster caught the eye while multi-colored, wrapped yarns caught the imagination. These durable and strong yarns are perfect for their versatility to execute lace and open-net stitches.



Rainbow Paint & Colored Neps

Brightly colored novelty yarns in metallic and slubbed variations added a happy pop to the spring season, while the painterly feeling of space-dye combine energetic palettes.