

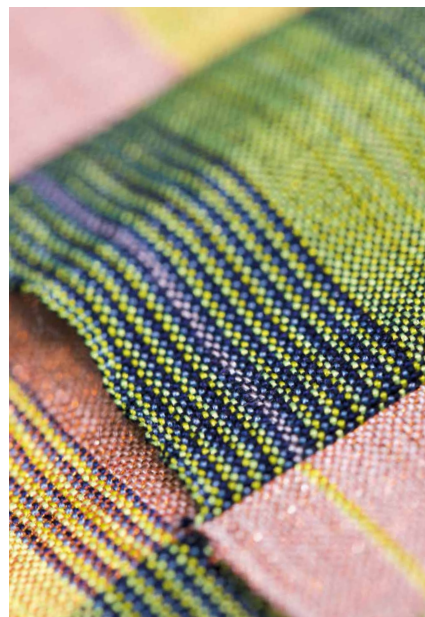


# RESULTS

## SPINEXPO™ NEW YORK

AUTUMN/WINTER 2020

# 16-18 JULY 2019



**T**HE 11<sup>TH</sup> SESSION OF SPINEXPO NEW YORK WAS HELD ON 16/17/18 JULY 2019 AT THE BROOKLYN EXPO CENTRE, GREENPOINT, NEW YORK AND PLAYED HOST TO 75 EXHIBITORS, INCLUDING 25 KNITWEAR MANUFACTURERS. THE AMBIENCE WAS PARTICULARLY PLEASANT AND THE VISITORS WERE HAPPY, DESPITE A DIFFICULT INTERIOR TEXTILE MARKET DIVIDED BETWEEN THE ESTABLISHED, GENERALLY MAJOR BRANDS, WHOSE PRIORITY IS TO STAY COMPETITIVE WHILE MAINTAINING ATTRACTIVE PRICES, AND THE BRANDS LAUNCHED BY CONTEMPORARY DESIGNERS, WHO SEEK INSTEAD TO ASSERT THEIR SPECIFIC IDENTITY WHILE MOVING UPMARKET AND ARE LOOKING FOR SUPPLIERS WHO CAN HELP THEM PRODUCE MORE AFFORDABLE RANGES BUT ARE WILLING TO ACCEPT HIGHER COST PRICES.



*The overall mood of the show was upbeat and it seems the American customers are still in the mood to buy. Pricing was a major deciding factor but the quality of the clientele was very good as most people came to do business rather than simply to browse. Generally, the mood amongst clients seemed more positive, but the exhibitors were rather less dynamic given their own business situations.*

*Conversations centred around the current insecurity, negotiations between the USA and China, potential obstacles and tax rates, although this issue did not appear to affect the mood of the buyers, who seem to adapt from day to day and have decided to carry on working much as before. As for the Chinese suppliers, after concentrating on their booming interior market last year, they are once again focusing their attention on the export market, which guarantees them more secure conditions of sale and enables them to continue sourcing more inspirational products.*

*Most of the major players came to the show to see the yarn vendors but some were very interested in the private label type of business where they can just take designs directly from the knitwear manufacturers and place orders, provided they are happy with the prices.*

*One surprising development to note in terms of the clientele coming to SPINEXPO™ is the emergence of younger designer brands. They came to the show seeking quality products and good designs. Many of them were especially excited by the fact that*

FIBRES | YARNS | KNITWEAR | ACTIVEWEAR | CIRCULAR KNIT | SOCKS AND KNITTED SHOES | HAND KNITTING

save  
the  
dates



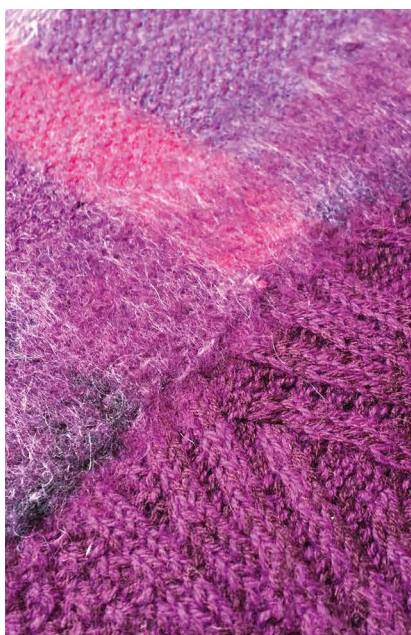
34<sup>TH</sup> SESSION  
**SHANGHAI**  
3-5 SEPT. 2019  
WORLD EXPO EXHIBITION  
& CONVENTION CENTRE

7<sup>TH</sup> SESSION  
**PARIS**  
14-15 JAN. 2020  
CARROUSEL  
DU LOUVRE

35<sup>TH</sup> SESSION  
**SHANGHAI**  
25-27 FEB. 2020  
WORLD EXPO EXHIBITION  
& CONVENTION CENTRE



“  
SPINEXPO™  
is a "must-visit" show  
for all buyers  
who are looking for  
innovative products  
at affordable prices. ”



some knitwear manufacturers can offer design services in addition to development and production. The price point for them is quite high-end, so they were unconcerned by development costs and FOB prices but were especially focused on the product quality. This shows that the younger brands are already starting to accept “made in China” with quality.

In 2019 buyers have focused resolutely on fancy yarns, visually interesting and attractively priced. The notion of price, which was not the most important factor in 2018, has been key in 2019. The knitters, whose collections feature elaborate designs, have not been popular with buyers, who wanted more basic styles using fancy yarns in compositions that allow for a lower purchase price.

The market is divided into two distinct segments. There are the established brands that are searching for attractive prices and the new, more exclusive brands, which remain relatively modest in terms of size and offer their clients more personalised, high-end products, in innovative materials and blends, aiming for a targeted distribution based on smaller volumes. The visitor structure is changing and we welcomed a higher number of new companies and designers who are setting up on their own, but fewer representatives per company for the established brands. The American market continues to evolve and innovate and is now segmented between the major chains and the contemporary brands that operate on a smaller scale with higher-end and more personalised products. The challenge for the suppliers is to adapt to a local market that is changing every year, sometimes by 180 degrees, and whose versatility is becoming a destabilising factor for suppliers who depend on their production facilities.

Visitor numbers are stable compared to the previous year (1015) and we feel neither euphoria nor negativity, but accept the market as it is, a working environment conducive to discovering products to inspire the retail market. The traditional products, including flat-knit, sophisticated cashmeres and merino wools, have not been popular this season; rather it is all the fancy yarn manufacturers who have been the big winners.

Many fashion brands are starting to produce their own loungewear lines and are looking at sweaters instead of cut & sew garments, which do not offer the luxurious fibre options with the ability to customise stitches that sweaters do. People said they were especially attracted by the style and the yarns from the home section, not only because of the colour palettes and the simplicity of the garment designs, but also by the silhouettes. They said they were inspired by the pattern blocks because they can be worn by many body types and shapes for many different occasions. The general trend towards easy/comfort dressing is leading people to search for yarns and designs that are not only simple and elegant, but can mostly be worn for a long time with no trend-driven expiry date. As well as fashion brands branching out into loungewear, there were smaller brands focusing solely on the aspect of wellness, including yoga wear and athletic leisure wear. The home textiles developed by Steven OO of Meridian Knitwear for Shima Seiki's Barcelona ITMA show were very well received and some of the home textile brand manufacturers who visited SPINEXPO mentioned that they want to start working in this direction to develop knitted home textiles.

[www.spinexpo.com](http://www.spinexpo.com)

save  
the  
dates



34<sup>TH</sup> SESSION  
**SHANGHAI**  
3-5 SEPT. 2019  
WORLD EXPO EXHIBITION  
& CONVENTION CENTRE

7<sup>TH</sup> SESSION  
**PARIS**  
14-15 JAN. 2020  
CARROUSEL  
DU LOUVRE

35<sup>TH</sup> SESSION  
**SHANGHAI**  
25-27 FEB. 2020  
WORLD EXPO EXHIBITION  
& CONVENTION CENTRE



Home was without a doubt a success, maybe even more so in NY than in Paris, because Americans prefer casual fashion to the more intricate designs. SPINEXPO™ will definitely explore these lines in more detail for the next Spring/Summer session. This project was also a very good way to keep SPINEXPO's exhibitors happy because their yarns were displayed in an optimal light without other spinners' yarns being mixed in.

**BUSINESS ACTIVITY**

Knitwear Manufacturer	18.51%
Garment Manufacturer	12.72%
Trading Companie (Garment)	3.23%
Trading Companie (Yarns)	2.66%
Spinner	1.25%
Sourcing Office	7.61%
Design Office	39.73%
Department Store - Wholesaler Retailer - Agent	8.65%
Press	0.52%
Others	5.11%

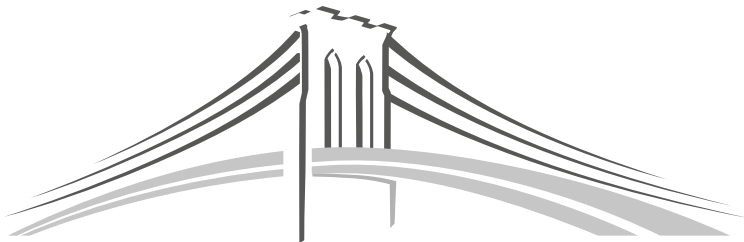
Sustainability/Natural with Performance was still a topic on the mind of most brands, but they are no longer looking for the typical organic cotton/linen, 100% natural fibre yarns. They are all looking for natural yarns with a tech/performance aspect. Most brands don't want 100% natural or 100% synthetic if price is not the sole driver for decision-making. Clients still mainly want the content to be natural, but many of them are looking for blended natural fibres with recycled fibres or performance aspects like UV protection and wicking ability. This is in line with SPINEXPO's opinion that the notion of "sustainability" used to market products is a misconception and that there is a lot more to the concept than just the word.

Of the garments displayed for the main trend, the pieces that drew most attention were those that combined fashion and functionality. Pretty for the sake of being pretty is no longer on the radar for the American clients. They loved the Refuge menswear because it had stitches that were padded and looked very technical. The garments were fashionable but still wearable. The plaid coats were also well received as they provided an alternative to the traditional woven tweeds that can only be found in wovens. Visitors were attracted by styles that provide fashionable design details with a performance touch.

**TEXTILE SECTOR**

Flat Bed knit (sweater)	33.01%
Knitted fabrics (outerwear)	14.61%
Knitted Fabrics (lingerie/underwear)	6.18%
Circular Knit (hosiery)	5.82%
Weaving (clothing fabrics)	13.73%
Weaving (home textile)	4.64%
Socks/Gloves/Hats	10.71%
Lace/ribbons/embroidery	5.89%
Technical end-uses	5.41%

SPINEXPO™ remains a "must-visit" show for all buyers who are looking for innovative products at affordable prices. The event mainly showcases the New York brands and those situated in the Eastern part of the United States. The "pop-up" designers from the West Coast of the United States are too small to be able to travel easily so we continue to tell them about products and trends and look forward to welcoming them when they can afford to make the trip.



**The next edition will be held at  
BROOKLYN EXPO CENTRE in July 2020**

**SPINEXPO™ Shanghai will be held at Shanghai World Expo Centre - Pudong, Shanghai in September 2019.  
It promises to be a sell-out event with a record number of exhibitors.**

[www.spinexpo.com](http://www.spinexpo.com)

save  
the  
dates



34<sup>TH</sup> SESSION  
**SHANGHAI**  
3-5 SEPT. 2019  
WORLD EXPO EXHIBITION  
& CONVENTION CENTRE

7<sup>TH</sup> SESSION  
**PARIS**  
14-15 JAN. 2020  
CARROUSEL  
DU LOUVRE

35<sup>TH</sup> SESSION  
**SHANGHAI**  
25-27 FEB. 2020  
WORLD EXPO EXHIBITION  
& CONVENTION CENTRE

For more information: Charlotte Gu - [charlotte@spinexpo.com](mailto:charlotte@spinexpo.com) (Asia) - Karine Van Tassel - [kvt@spinexpo.com](mailto:kvt@spinexpo.com) (other countries)



# COMPANIES VISITING SPINEXPO™ NEW YORK



525 AMERICA  
6397  
ABERCROMBIE & FITCH  
ACE AND EVERETT  
ACTIVE CASHMERE  
ADPL  
AEROPOSTALE  
AFFINA BXB COMPANY  
AIXIDE  
ALAA HASHIM  
ALEKSANDRA MCCORMACK  
ALEXANDER WANG  
ALICE & OLIVIA  
ALL KNITTED  
ALLIANCE KNITTERS  
ALMOST FAMOUS  
ALPACA NEW YORK  
AMA CONNECTION  
AMELOTTE INT'L  
AMERICAN WOOLEN  
AMICALE CASHMERE  
ANKE LOH  
ANGORA GROUP  
ANN INC  
ANN TAYLOR  
ANNIE + OTIS  
ANNIE HLAVCEK  
ANTHONY THOMAS MELLILO  
ANTHROPOLOGIE  
AO APPAREL  
AQUARIUS  
ARCHETYPE NY  
ASAHI KASEI  
ASCENA  
ASSEMBLE LAB  
ATELIER PARADON  
ATM  
ATM COLLECTION  
AUTUMN CASHMERE  
AVENUE  
BANANA REPUBLIC  
BASICA  
BBR CONSULTING INC  
BEAUTY BRAND  
BELFORD  
BELDINI  
BEREK  
BERNETTE  
BEX BUCKNER  
BHAVANA WORLD PROJECT  
BIRCH FASHION  
BLACK DIAMOND EQUIP.  
BONNIE YOUNG  
BONOBOS  
BROOKLYN TWEED  
BROOKS BROTHERS  
BT DESIGNS INC  
BURBERRY  
CABLE & GAUGE  
CALVIN KLEIN  
CAMEO SOCKS  
CARLISLE ETCETERA  
CAROLINA AMATO ACC.  
CARYN VALLONE DESIGNS  
CASPER  
CATHARINE LOVER  
CENTRAL PARK WEST  
CENTRIC BRANDS  
CENTURY SOURCING  
CH ALLIANCE  
CHAMPALIMAUD  
CHARTER VENTURES  
CHILEWICH  
CHINEX USA  
CINQ A SEPT  
CLARICE LAPPE  
CLAUDIA LI  
CLINTON HILL CASHMERE  
CLOTH & TRIM  
CLUB MONACO  
CO BEST  
COBALT KNITWEAR  
CODDY GLOBAL  
COLLECTION XIIX  
COLORTREE  
COMBINED INTEREST  
COURSES & WALES LLC  
CYRUS  
DAJING TEXTILE TECH.  
DAR AL CAFTAN  
DELTA GALIL  
DELTA SOCKS  
DEMYLEE  
DENKA  
DEREK LAM  
DESIGN HISTORY  
DIANE VON FURSTENBURG  
DOLORES PISCOTTA  
DONEGER  
DZ GROUP  
E.S SUTTON INC.  
EBERJEY  
ECHO DESIGN GROUP  
EDDYS BRAND  
EILEEN FISHER INC.  
ELISE PELLETIER  
ELLA MURRY  
ELLIOTT LAUREN  
ELSA OLIVEIRA

EMILY KELLER  
EPOCH TIMES  
ESQUEL APPAREL  
EUGENIA KIM  
EXPRESS  
FAIRMOUNT FIBERS  
FASHION AVENUE  
FEETURES  
FIBER OPTION  
FICHU BEDWEAR  
FILPUCCI  
FISHMAN'S FABRICS  
FLATIRON KNITS  
FLORA GILL  
FOWNES BROTHERS  
FRAAS  
FRAME  
FRANK & OAK  
FRED HASSON DESIGN  
FREE PEOPLE  
FRESH WAVE STUDIO  
FULL BEAUTY BRANDS  
FUTZ SOCKS  
G9CFASHION  
G SQUARED  
GALINA CARROLL DESIGNS  
GAP  
GARY ROONEY  
GARNIETEX INT'L  
GAVEA COLLECTION LLC  
GBG  
GCE INT'L  
GENERAL IDEA  
GENERATION LOVE CLOTHING  
GIHI  
G-III KARL LAGERFELD  
GILDAN  
GIOTEX  
GIRDHAR TEX FAB  
GLOBAL BRANDS GROUP  
GLORY APPAREL  
GMPC  
GOOD OMEN NYC  
GOODHEW  
GREG NORMAN COLLECTION  
GRETE  
GSTQ  
GURL DESIGN INC.  
GYALTSEN RUG IND.  
HABITAT CLOTHES  
HALANDAVE  
HATCH  
HBC  
HEMP BLACK  
HERVE LEGER  
HIGH POINT DESIGN  
HMS PRODUCTIONS  
HM  
HUAFU FASHION CO. LTD  
HUDSONS BAY CO.  
HUMAN B DESIGN  
IMPLUS  
IKAR  
IKNIT GROUP  
ILUX  
IN CASHMERE  
INGABE  
INHABIT  
INOVOTEX  
INTERLOOP  
INTERMIX  
ISLEFIELD INC.  
J. CREW  
J. KRINGLE DESIGN  
J.J'S MAE  
J.MCLAUGHLIN  
JACQUI STARKEY  
JAMSTRONG  
JC PENNY  
JEAN BOLAND DESIGN  
JEANNE PIERRE  
JED GROUP  
JEFFREY DODD  
JEN GEVING  
JENN KUZARA DESIGN  
JEUMO  
JINGSHANG CASHMERE  
JJ BASICS  
JOE FRESH  
JOHN VARVATOS  
JOHNNIE-O  
JO-Y-JO  
JUBU CORP  
JULIA JENTZSCH  
K ZEN  
KASPER GROUP  
KATE SPADE  
KAYLYN DESIGNER  
KAYSER-ROTH CORP.  
KBL GROUP  
KD NEW YORK  
KESH TEAM INC.  
KIM HALLER DESIGN  
KING & FIFTH SUPPLY  
KNP GROUP INC  
KOHL'S  
KOKUN  
KOMAR  
KOWLOON COMMODITIES

KRELWEAR  
KULE  
L BRANDS  
L.F.A. KNIT DESIGN  
LA BOITE PETITE  
LA LIGNE  
LA STELLA DESIGNS  
LAMCAD  
LANDS' END  
LANE BRYANT  
LANERO  
LEFT COAST KNITTING  
LENA DAVIS DESIGNS  
LENOR ROMANO  
LEXI KY  
LEYA  
LIAMOLLY  
LILLA P  
LILLY PULITZER  
LIMITLESS STYLE  
LINE KNITWEAR  
LION BRAND  
LISA TODD  
LIU SUN  
LIVE THE PROCESS  
LOFT  
LOOP AND CURATE  
LOTUS APPAREL DESIGNS  
LOU & GREY  
LOVE SHACK FANCY  
LUCKY BRAND  
KNITTING TO DYE FOR  
MACY'S  
MADEWELL  
MAIN STREET FASHIONS  
MARC JACOBS  
MARCIA GOLDBERG  
MARGARET O'LEARY  
MARSHALL WACE  
MASHBURN  
MASSIMO MORRI  
MATERIAL CONNEXION  
MAURICES  
MDL  
MEME AMERICA  
MERIDIAN SPECIALTY YARNS  
MGF SOURCING  
MICHAEL GERALD  
MICHAEL KORS  
MICHELLE YOM DESIGN  
MUJUNG  
MILLY  
MING WANG  
MINNIE ROSE  
MISOOK  
MOHK  
MONSE  
MUCKTAR  
NAADAM CASHMERE  
NAMESON GROUP LIMITED  
NARCISO RODRIGUEZ  
NATION DESIGN  
NEKOPAK  
NEO CONCEPT  
NETO  
NESTER HOSIERY  
NOMIA  
NUDR  
NEW FORM PERSPECTIVE  
NEW SCHOOL  
NYC ALLIANCE  
O.I.A.  
OLD NAVY INC.  
ONCE AGAIN APPAREL  
ONE JEANSWEAR GROUP  
ORVIS  
OSCAR DE LA RENTA  
OST APPAREL  
OTSU FANCIFIL TEXTILE  
OXFORD APPAREL  
O-WOOL  
OXYGENE  
PAT TUNSKY  
PERRY ELLIS  
PILGRIM SURF + SUPPLY  
PINK ROSE  
POLO RALPH LAUREN  
PRATT INSTITUTE  
PROENZA SCHOULER  
PROJECT DESIGN GROUP  
PS SOLUTION COMPANY  
PURE&CO  
PURL SOHO  
PVH CORP  
PYA IMPORTER  
QUINN APPAREL  
RAFFI  
RAG & BONE  
RAILS  
RAINSKIN LLC  
RALPH LAUREN  
RALSEY GROUP  
RAMY BROOK  
RAVELLA  
RDG GLOBAL  
REBECCA TAYLOR  
RED MOON  
REGINA FURTEK DESIGN  
RENFRO

REPUBLIC CLOTHING  
REUNITED CLOTHING  
ROBERT CRAMER DESIGN  
ROBERT GRAHAM  
ROBINSON-RHODES  
ROSS STORES  
ROWING BLAZERS  
RICHARD SHIEF  
RUBY RD  
RUI  
SAINT-AGNES  
SALTY INC.  
SANDY LIANG  
SCOTTEX GLOBAL HK  
SG FOOTWEAR  
SHANGHAI SHENGDA  
SHANNON CREATIVE  
SHELLEYS DESIGNS  
SHIMA SEIKI USA  
SHINEHOO  
SIES MARJAN  
SILK CITY FIBERS  
SMARTEX INT'L GARMENTS  
SOFIA CASHMERE  
SOSA KNITWEAR  
SOSSAI  
SOUTHERN TIDE  
SOVEREIGN YARN  
SPECTRA  
SPINRITE  
SPIRITUAL GANGSTER  
SPLENDID  
SPRADLING GROUP  
SPRINGAIR SUNSHINE-TAG  
STANDARD TEXTILE  
STEVE MADDEN  
STITCH  
STITCH FIX  
STOLL AMERICA  
STONY APPAREL  
STUDIUM NY  
SUMEC  
SUMMIT RIDGE CORP  
SUNRISE BRANDS  
SUSAN GUAGLIUMI  
TACITA AMES  
TAILORED BRANDS  
TAITRA  
TAIWAN TRADE CENTER  
TAIYO US CORP.  
TALBOTS  
TARGET  
TCW TRENDS  
TECO IN NY  
TEXTILE ARTS CENTER  
TEXTILE EXCHANGE  
THAKOON  
THARANCO GROUP  
THE ACADEMY NY  
THE ACCESSORY COLLECTIVE  
THE APPAREL GROUP  
THE CHILDREN'S PLACE  
THE KASPER GROUP  
THE NORTH FACE  
THE ORVIS COMPANY  
THE SG COMPANIES  
THE TJX CO  
THE TJX COMPANIES  
THE WOOLMARK CO.  
THEORY  
THOM HUDSON  
TIA CIBANI LLC  
TIBI LLC  
TITEXXET  
TODD SNYDER  
TOME  
TOMMY BAHAMA  
TOMMY HILFGER  
TORY BURCH  
TOTES-ISOTONER  
TROPIC OF C  
TWANDA APPAREL  
UNIFORME  
UNIVERSAL STANDARD  
UNWINE  
URBAN OUTFITTERS  
USA LEGWEAR  
VALENTINA KOVA  
VERONICA BEARD  
VERTICAL DESIGN INC  
VESPERTINE  
VF CORPORATION  
VICTOR LI OPERATIONS  
VICTORIA'S SECRET PINK  
VINCE CAMUTO  
VINEYARD VINES  
WANZIMAN HK  
WIKI WANG APPAREL  
WOBBLE GOBBLE YARN  
WOL HIDE  
WORLD THREADS INC.  
WORKERBY STUDIO  
WUHAO NEWYORK INC  
XCEL BRANDS  
YALA FASHION INC  
YAKUIN TRADING CORP  
YOGA CROW  
ZANKOV  
ZIMMERMANN