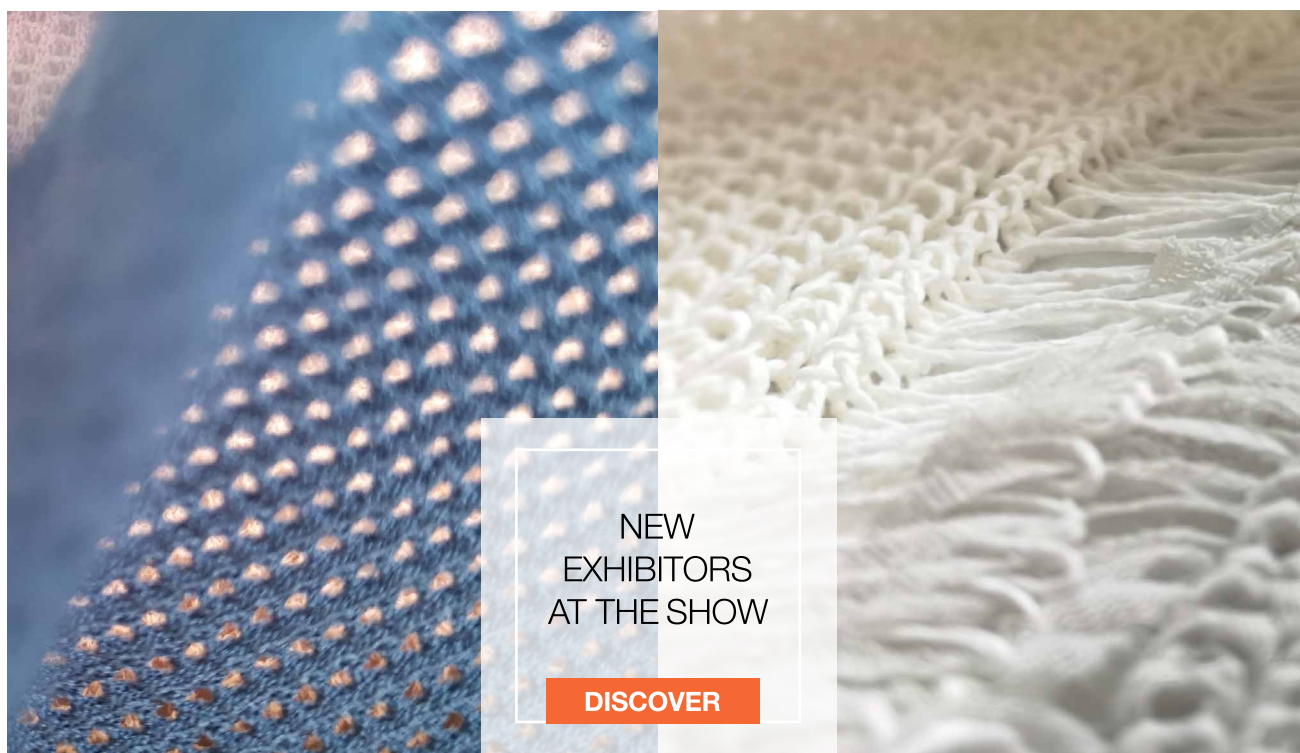




SPINEXPO™

A SELECT INTERNATIONAL EVENT
IN THE FIBRE, SPINNING AND KNITWEAR SECTORS
200 EXHIBITORS, SPECIALISTS IN THEIR SECTOR,
LOOK FORWARD TO SEEING YOU THERE!



FIBRES | YARNS | KNITS | CIRCULAR KNITS | ACTIVEWEAR | SOCKS | HAND-KNITTING WOOLS

SAVE THE DATES!

35TH SESSION

SPINEXPO™ SHANGHAI

25-27 FEBRUARY 2020

AT THE SHANGHAI WORLD EXPO CONVENTION & EXHIBITION CENTRE

SPINEXPO™ is an international and selective textile exhibition of average size, featuring mid to high-end exhibitors in the fibre, spinning and knitwear sectors.

SPINEXPO™ exhibitors are mostly export-oriented spinning manufacturers and fibre promoters.

SPINEXPO™ also plays host to a large range of companies specialising in knitwear design and manufacture. Most of the knitwear manufacturers have their own collections as well as a Research & Development department, and are capable of working directly with international brands.

FREE ENTRANCE ONLY FOR TRADE VISITORS WITH BUSINESS CARDS.

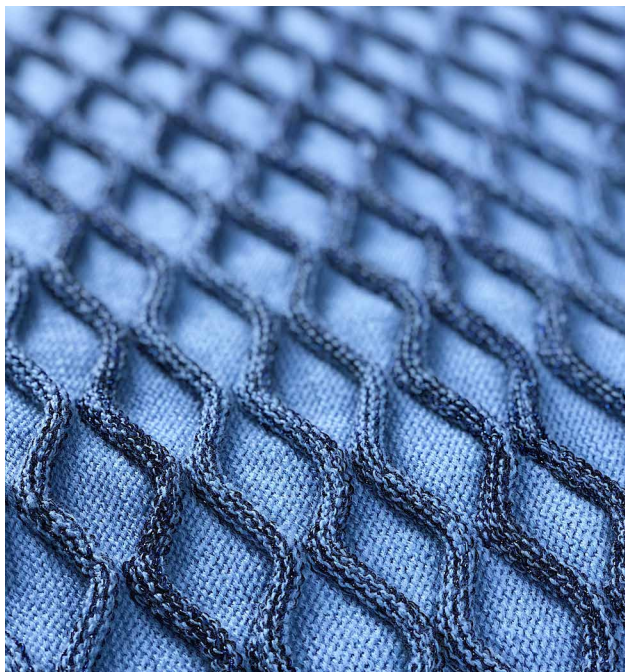
PRE-REGISTER AND VIEW THE EXTENSIVE LIST OF EXHIBITORS
AND FIND SPECIFIC INFORMATION.

VISIT US AT WWW.SPINEXPO.COM



SPINEXPO™

NEW EXHIBITORS AT THE SHOW:



MEDITERRANEAN TEXTILE COMPANY

is one of the largest spinning units in Egypt. They specialise in long Egyptian cotton, Supima, Organic cotton, BCI Supima cotton and also offer yarns with bamboo, Lyocell, linen & hemp fibres. They specialise in Gassed, Mercerised Bleached & Dyed yarns for knitting, weaving, sewing threads, crochet & embroidery yarns. They are a member of BCI and have GOTS, Supima, Cotton Egypt Association, Oekotex, ICS, ISO 9001 & 14,000 certificates.

JOJI TEXTILE COMPANY

focuses on the development of what is known as non-woven fabric yarns. They select various kinds of non-woven fabric, including paper, and by means of splitting and crocheting, double twirling, flower twirling, create various styles of fancy yarns to be used in "Chanel-like" woven fabrics, warp knitting, sweaters and hook knitting products.

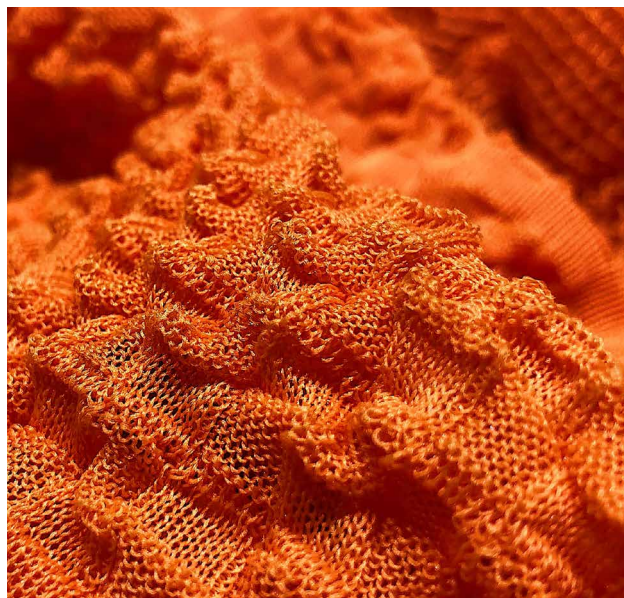
They also supply paper/leather/plastic/net/wool slit yarns.



RUNLONG KNITWEAR

knitted fabric has a complete and scientific production line, based on having gained considerable experience in the processing and production of various brands.

They use new types of Italian knitting machines and Italian imported warp knitting machines like the MecMor woollen sweater circular machine to produce innovative sweater garments. This equipment is used for the development and production of the advanced brand Missoni.



RISOO TECHNOLOGY TEXTILE

is a modern service-oriented high-tech enterprise. It has developed its own high-tech fibre brand "Maxheal" and also cooperates with German and Japanese textile brands; it has become the exclusive agent for the German functional fibre Dralon® in China, and also for the brand-new functional acrylic fibre "Defronstex®", "EKS®" and "POLARNO®" of TOYOBO. It has expanded both online and store channels to achieve efficient integration of the entire industry chain.

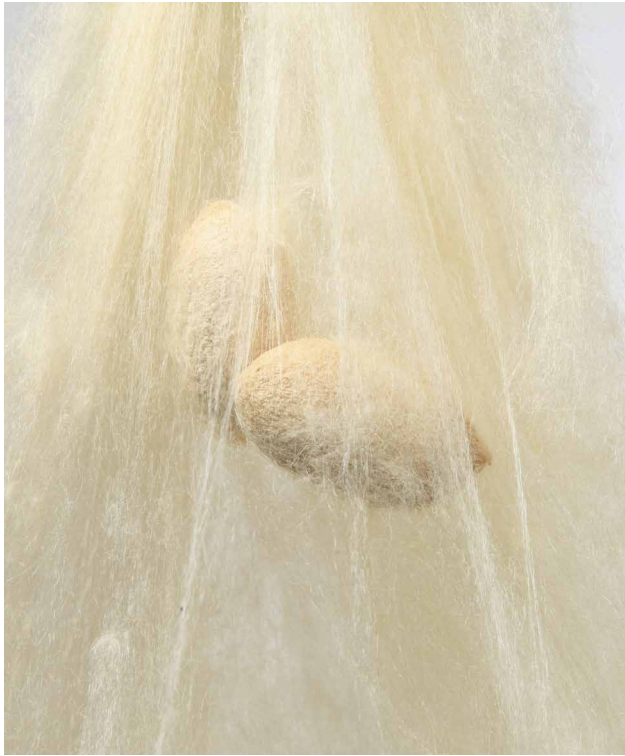
save
the
dates



35TH SESSION
SHANGHAI
25-27 FEB. 2020
WORLD EXPO EXHIBITION
& CONVENTION CENTRE

7TH SESSION
PARIS
29-30 JUNE 2020
CARROUSEL
DU LOUVRE

12TH SESSION
NEW YORK
14-16 JULY 2020
GREENPOINT
BROOKLYN EXPO CENTER



CAIYI WILD SILK PRODUCTS

is located in the world's largest silkworm production area where they create healthy and ecological wild silkworm products. The company has developed more than 350 varieties of tussah silk, wild silk fabric, wild silk quilts, wild silk blankets, wild silk warm health care clothing, and created a series of "fine silk" raw materials.



BAOHENG TEXTILE TECHNOLOGY

BT International Investment Holding, and Hengyuan Knitting Garment are a one-stop service providing yarn development through to its design and production. The professional design team provides customised services, from personalised yarn to garment design according to customer requirements. Baoheng and BT are mainly involved in fancy yarn and semi-worsted yarn production. Guangzhou Hengyuan is dedicated to design, production and processing, and is one of the service-oriented enterprises.



JINHU KNITTERS GARMENTS

manufacture high-end sweaters, and specialise in hand and machine embroidering, handcraft, printing and fabric abutting. The company has specialist equipment including 3G-18G hand driven knitting machines, 7G-14G intarsia machines and the newly imported German STOLL computer knitting machines. The company designs and selects high quality raw materials. It has an experienced management, in-house quality control system and meets ISO 9001/2000 standards.

save
the
dates



35TH SESSION
SHANGHAI
25-27 FEB. 2020
WORLD EXPO EXHIBITION
& CONVENTION CENTRE

7TH SESSION
PARIS
29-30 JUNE 2020
CARROUSEL
DU LOUVRE

12TH SESSION
NEW YORK
14-16 JULY 2020
GREENPOINT
BROOKLYN EXPO CENTER