



# SPINEXPO™

A SELECT INTERNATIONAL EVENT  
IN THE FIBRE, SPINNING AND KNITWEAR SECTORS

SPRING/SUMMER 2021



FIBRES | YARNS | KNITS | CIRCULAR KNITS | ACTIVEWEAR | SOCKS | HAND-KNITTING WOOLS

DUE TO THE EPIDEMIC OF CORONA VIRUS IN CHINA,  
SPINEXPO™ DECIDED TO CANCEL ITS SPRING/SUMMER 2020 SESSION,  
WHICH WAS DUE TO TAKE PLACE 25-26-27 FEBRUARY 2020.

WE RESPECT OUR EXHIBITORS AND VISITORS  
AND DO NOT WANT TO HOLD A TRADE SHOW IN THE CURRENT CONTEXT.

However, we are also aware that the trends presented at the show,  
as well as the new collections on display, will be difficult or impossible to access.  
We have decided to launch a virtual exhibition using “We Chat” in China  
and our SPINEXPLORE website elsewhere,  
to give anyone interested access to trend and new products information.

**WeChat: SPINEXPO**  
**[www.spinexplore.com](http://www.spinexplore.com)**

All the work prepared for this cancelled Spring/Summer 2021 session will be presented,  
together with the next Autumn/Winter 2021-22 at the next Paris and New York show.

**We hope to see you there to back us up and encourage our exhibitors.**

save  
the  
dates



7<sup>TH</sup> SESSION  
**PARIS**  
29-30 JUNE 2020  
CARROUSEL  
DU LOUVRE

12<sup>TH</sup> SESSION  
**NEW YORK**  
14-16 JULY 2020  
GREENPOINT  
BROOKLYN EXPO CENTER

35<sup>TH</sup> SESSION  
**SHANGHAI**  
1-3 SEPT. 2020  
WORLD EXPO EXHIBITION  
& CONVENTION CENTRE

VISIT US AT [WWW.SPINEXPO.COM](http://WWW.SPINEXPO.COM)





# SPINEXPO™

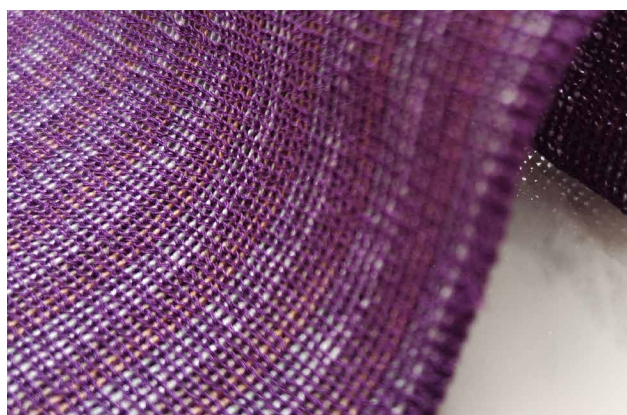
## TOP TRENDS:



*Under the headline “IMAGINE”, we are exploring modern health and fitness clothes, as well as yarns and fabrics that need to be a pleasure to touch, feel and wear, and be fit for purpose. At a time of great global concern regarding climate change, brands need to appeal to their customers both emotionally and socially, as wellness is having an impact on fashion trends.*

In a climate of insecurity, wellbeing has risen to the fore. Practising a sport, keeping “fit” and healthy involves a new way of dressing, with dress codes easing as work and leisure become more versatile and relaxed. During the spring and summer seasons, fibres become more functional, yarns more inventive and easy to care for, while retaining numerous functionalities and adapting to your body. Natural and man-made fibres are blended together for modernity and price point purposes; stitches are disordered, moving away from the conventional.

**Spring/Summer 2021 is the perfect time to reassess how we dress and this intertwines with our lives.**



**Physical, Mental, Emotional** represent our Spring 2021 trends: all related to personal wellbeing;

**Social and Transformational** represent our Summer 2021 trends and how we interact with other individuals around us. We will develop these two trends in our next newsletter.

We want to investigate a way to be resilient, flexible and adaptable, combining various aspects of our lives and how they drive the way we wear our clothes.

**Physical** refers to gym, sport, fitness, self-care, athleisure, swimwear. Yarns have a delicacy based on natural and high-tech blends with high tactility and qualities such as matt & shine, grainy, springy, light weight. Dry, crisp, cool – rubbery feel; synthetic with dry handle and a minimal shine, soft to the skin for sport lifestyle designs with comfort being key. Premium fibres and yarns for minimal designs with functionality targeting a luxury refinement, the upmarket athleisure and sports luxe market.

save  
the  
dates



7<sup>TH</sup> SESSION  
**PARIS**  
29-30 JUNE 2020  
CARROUSEL  
DU LOUVRE

12<sup>TH</sup> SESSION  
**NEW YORK**  
14-16 JULY 2020  
GREENPOINT  
BROOKLYN EXPO CENTER

35<sup>TH</sup> SESSION  
**SHANGHAI**  
1-3 SEPT. 2020  
WORLD EXPO EXHIBITION  
& CONVENTION CENTRE





**Mental** is about mind & body connection – digital revolution. This trend brings a quieter, more natural colour statement, solvent & degraded colours for textures and variations. Opalescent coatings, rainbow iridescence, opalescent sparkles. Synthetic & technical bio/synthetics yarns aimed at practicality & minimalism; natural materials, refinement, mono chromaticism; Performance, urban mobility.

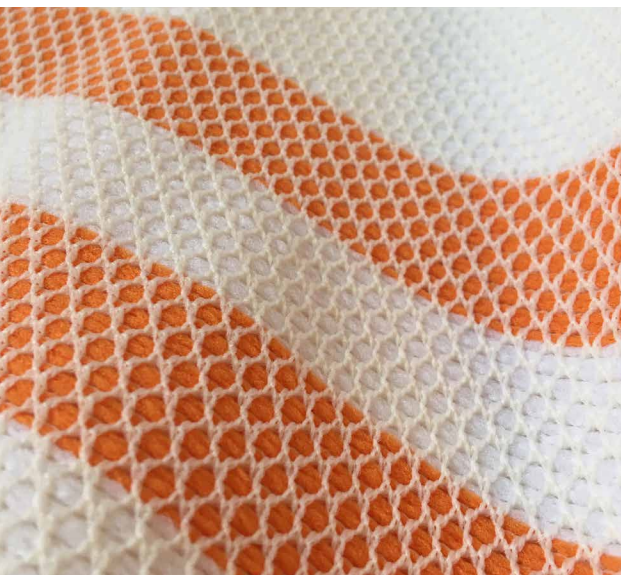
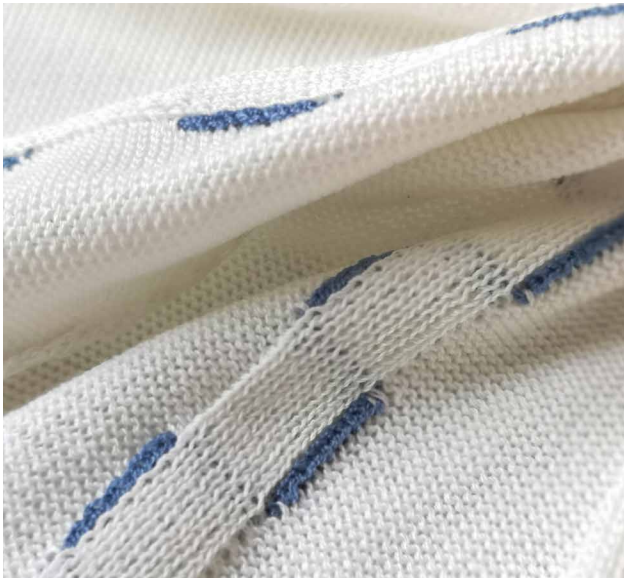
A mix of boldness, durability and delicacy, pleasant to the touch, soft handle. Dry crepe, fine yarns, an element of plainness, combination of natural and synthetics, ingenious structures, stretch and elastane yarns.



**Emotional** is concerned with health & beauty and well-being. Deconstruction, poetic simplicity, tenderness, colours used in striking combinations. Translucent, transparent yarns, nylon filaments, glossy with shimmery aspects. Super soft: mohair in Spring/Summer with a degree of quirkiness – luxury, glossy, high-tech hybrids and silky surfaces; glittering yarns, silks and smooth cottons.

Creation of irregular textures and colour degradation; translucent coating and liquid surfaces, wax effects. Irregular abstract patterns, photosynthesis.

The power of nature: nature-tech. Candy marble effects. Magnificent fibres and recycled plastics, composites: crystals, nacre with plastic and stone.



save  
the  
dates



7<sup>TH</sup> SESSION  
**PARIS**  
29-30 JUNE 2020  
CARROUSEL  
DU LOUVRE

12<sup>TH</sup> SESSION  
**NEW YORK**  
14-16 JULY 2020  
GREENPOINT  
BROOKLYN EXPO CENTER

35<sup>TH</sup> SESSION  
**SHANGHAI**  
1-3 SEPT. 2020  
WORLD EXPO EXHIBITION  
& CONVENTION CENTRE