

SPRING/SUMMER 2021



SPINEXPO™ CASA Z

A CASUAL HOME PROPOSAL FOR GENERATION Z

SPRING/SUMMER 2021

SPINEXPO™ IS THE LEADING INTERNATIONAL SOURCING EXHIBITION DEDICATED TO PROMOTING INNOVATIONS IN YARNS, FIBRES AND KNITWEAR

COLOURS

A soft colour palette of neutrals keeps us rooted and secure, a feeling most associate with the sanctity of home. The simple combination of creamy eggshells and pale greys evoke the filtered light that changes in our homes throughout the day.

12-0604 TCX
ANGORA



16-1210 TCX
LIGHT TAUPE



11-0604 TCX
GARDENIA



13-5304 TCX
RAINY DAY



14-4203 TCX
VAPOR BLUE



17-0000 TCX
FROST GRAY



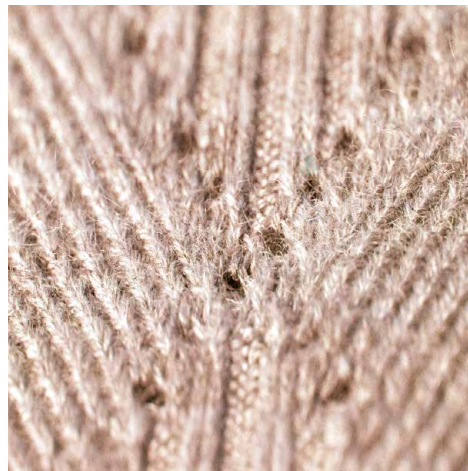
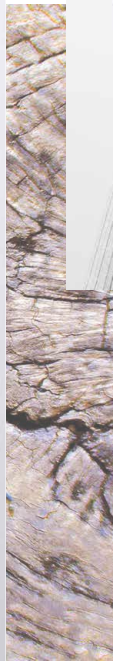


INSPIRATION

Luxury, cocooning, interchangeable and functional are some of the keywords that inspired our Casa Z designers, Steven Oo and Rory Longdon.

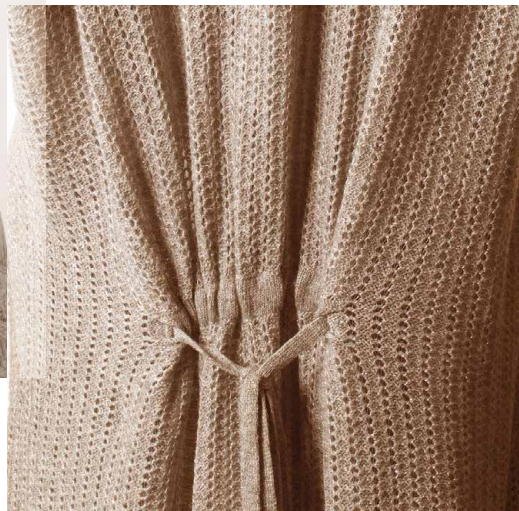
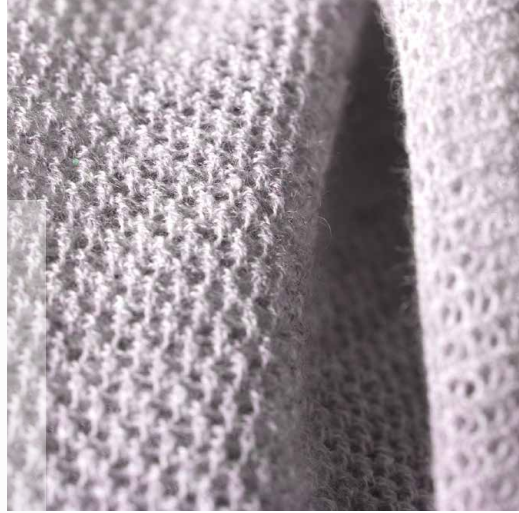
The designers also drew inspiration from styling lines found in traditional undergarments and reinterpreted them into knitwear for a more casual approach.





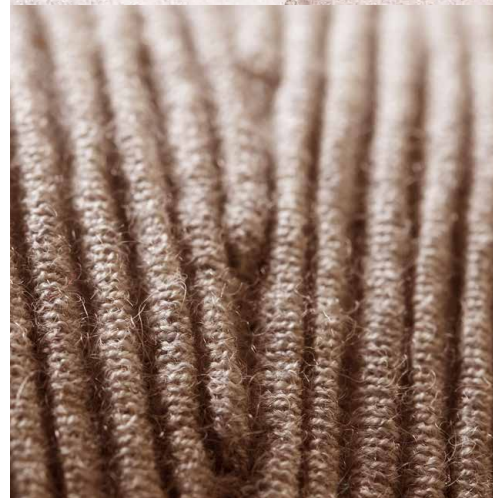
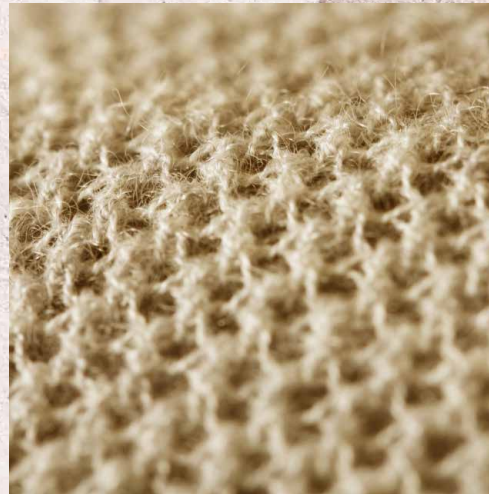
SHADOW STRUCTURE

The first capsule presented by Steven Oo has a more structured feel, both to stitches and finishes. Garments can be easily mixed and matched across the capsule and could be worn easily while lounging at home or running out for appointments.



SHADOW PLAY

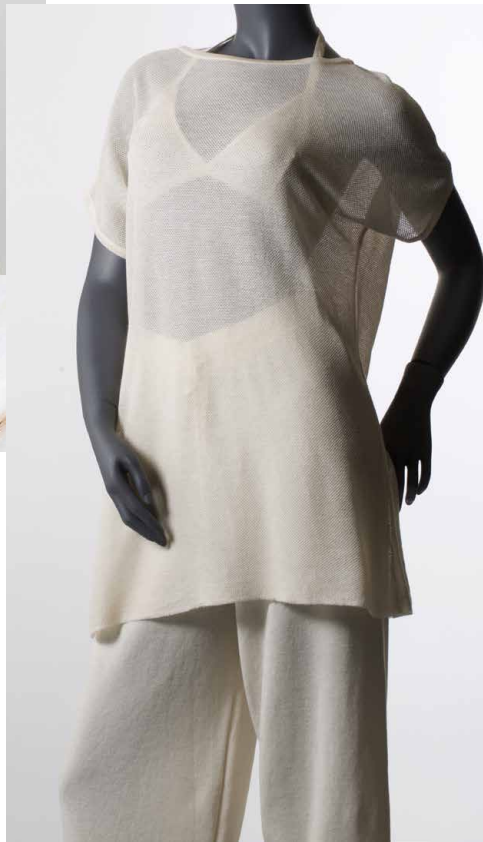
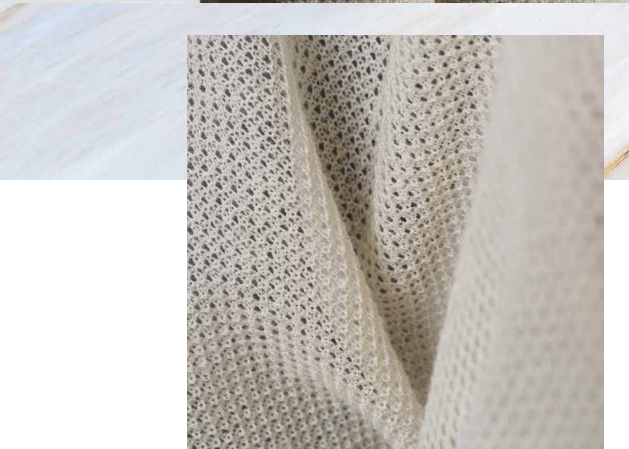
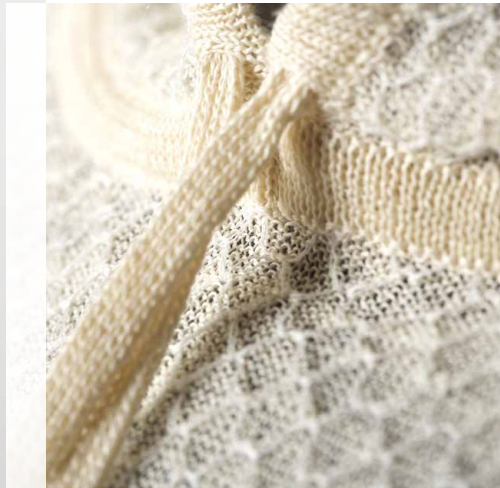
Steven's second capsule group has a more playful and evening feel, and the dramatic volume of the pants and poncho keep it super comfy while remaining very high style.



SHADOW YARNS

Yarns: Novelty luxury was the key direction for this group and features Cashmere/ Metallic blends in addition to sportier stretch-merino and stretch-cashmere. Fine gauge Supima and Egyptian cotton gives it a light touch and soft handfeel.

SPRING/SUMMER 2021



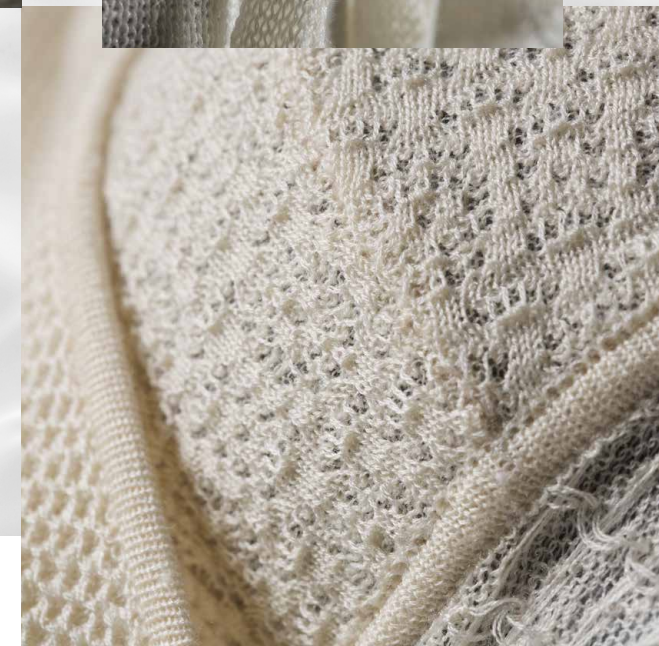
LIGHT AND EASY

Rory's first group of homewear garments are lightweight and have voluminous structure that allows for easy movement and clever layering. The simple shapes and neutral colour palette help these pieces to easily cross between genders.



LIGHTNESS AND DARK

The final grouping works well into evening time with a more suggestive styling that recalls vintage lingerie, which contrasts cheekily when mixed with the over-sized boxers and hoodies.



LIGHT YARNS

Luxurious ultra-fine merino wool, fine-spun silk, cashmere blends and fluid linens are worked in delicate stitches, in an elegant palette of off whites and creams. Yarns and fibers are undyed promoting a sense of purity when worn close to the skin.



CASA Z is created in partnership with SPINEXPO™
by Steven Oo and Rory Longdon

SPINNERS:

ZHONGDING, ZHONGYIN, HAOYE, ZIXIN,
YILEI, MEDITERRANEAN, ESQUEL