



SPINEXPO™ FORECAST EMOTIONAL



COLOURS

The optimistic colours of Emotional look towards the pigments of cosmetics for the orchid, lavender and aqua, while yellow, white and chartreuse give reference to biotechnical aspects. Light chestnut and taupe reference naturally sourced dyes for a tempering of this exuberant palette.

11-4800 TCX
BLANC DE BLANC



17-1311 TCX
DESERT TAUPE



13-0942 TCX
AMBER YELLOW



15-3214 TCX
ORCHID



14-0116 TCX
MARGARITA



13-4910 TCX
BLUE TINT

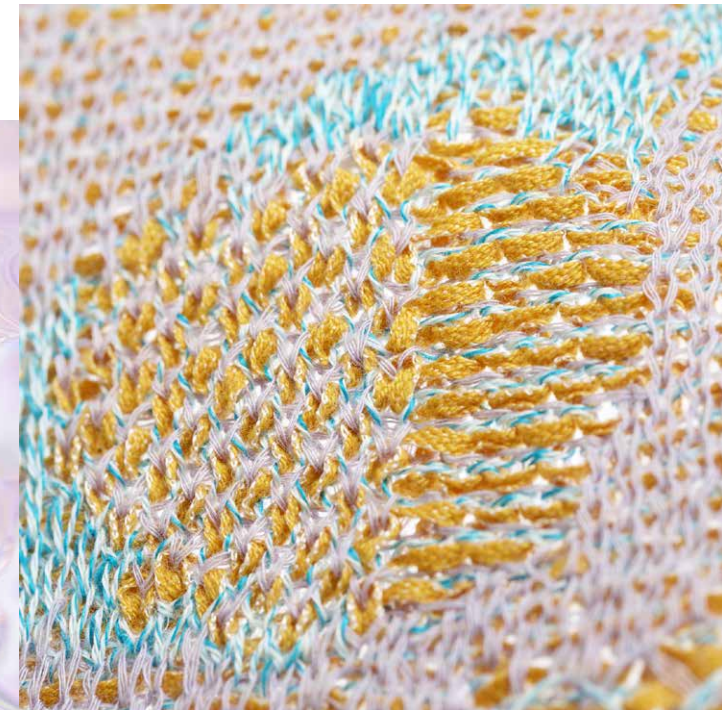


16-3911 TCX
LAVENDER AURA



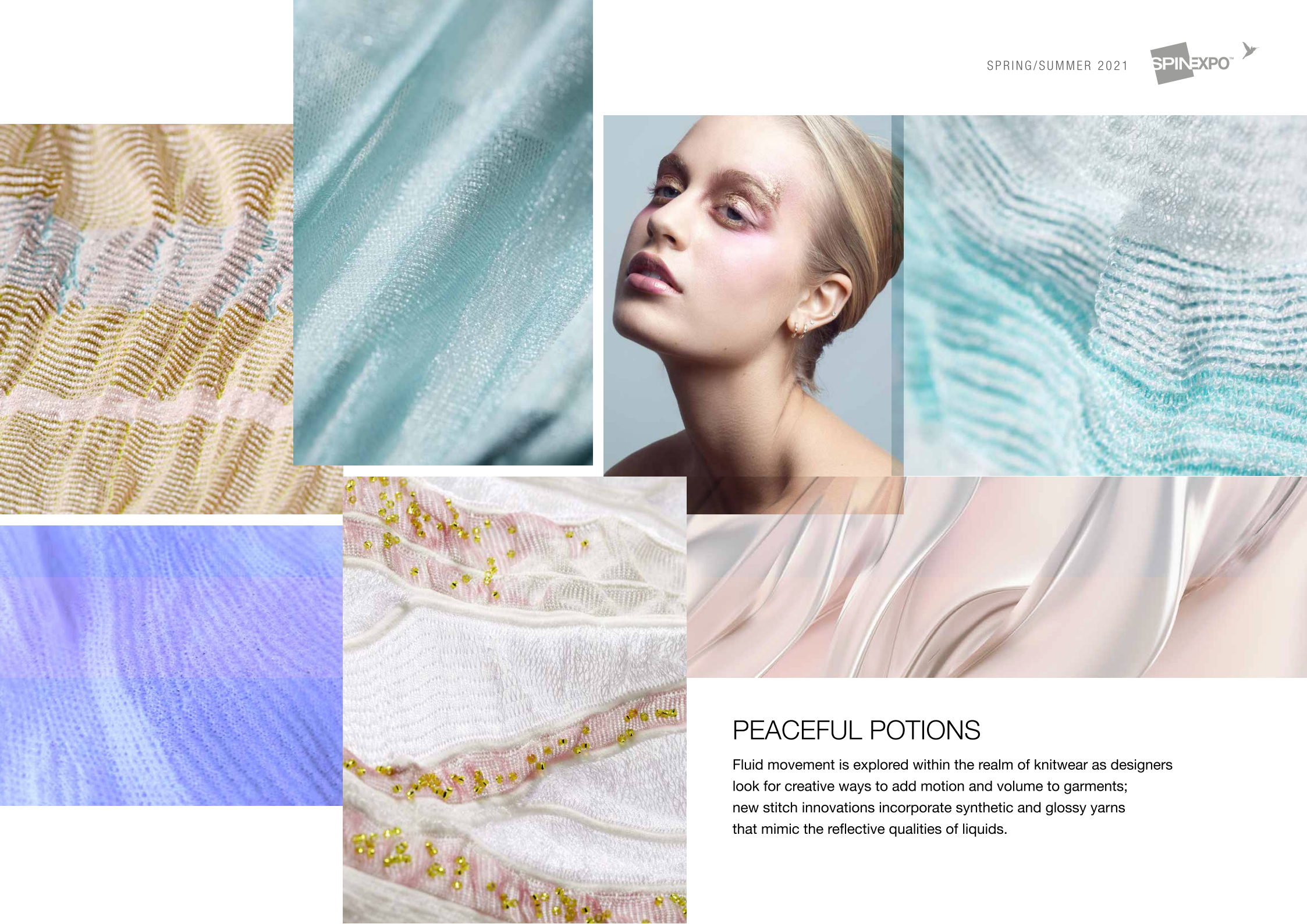
16-1323 TCX
MACARON





INSPIRATION

A modern take on old-fashioned; deconstruction, poetic simplicity and tenderness contribute a feminine feel, while the idea of infusions, potions, abstract digital graphics and molecular elements ground this into the future. Technical yarns create innovative modern constructions; translucent nylon filaments are glossy with shimmery aspects. This heightens the contrast with super-soft mohair, and the idea of rarity is omnipresent – luxury, glossy, high-tech hybrids and silky surfaces.



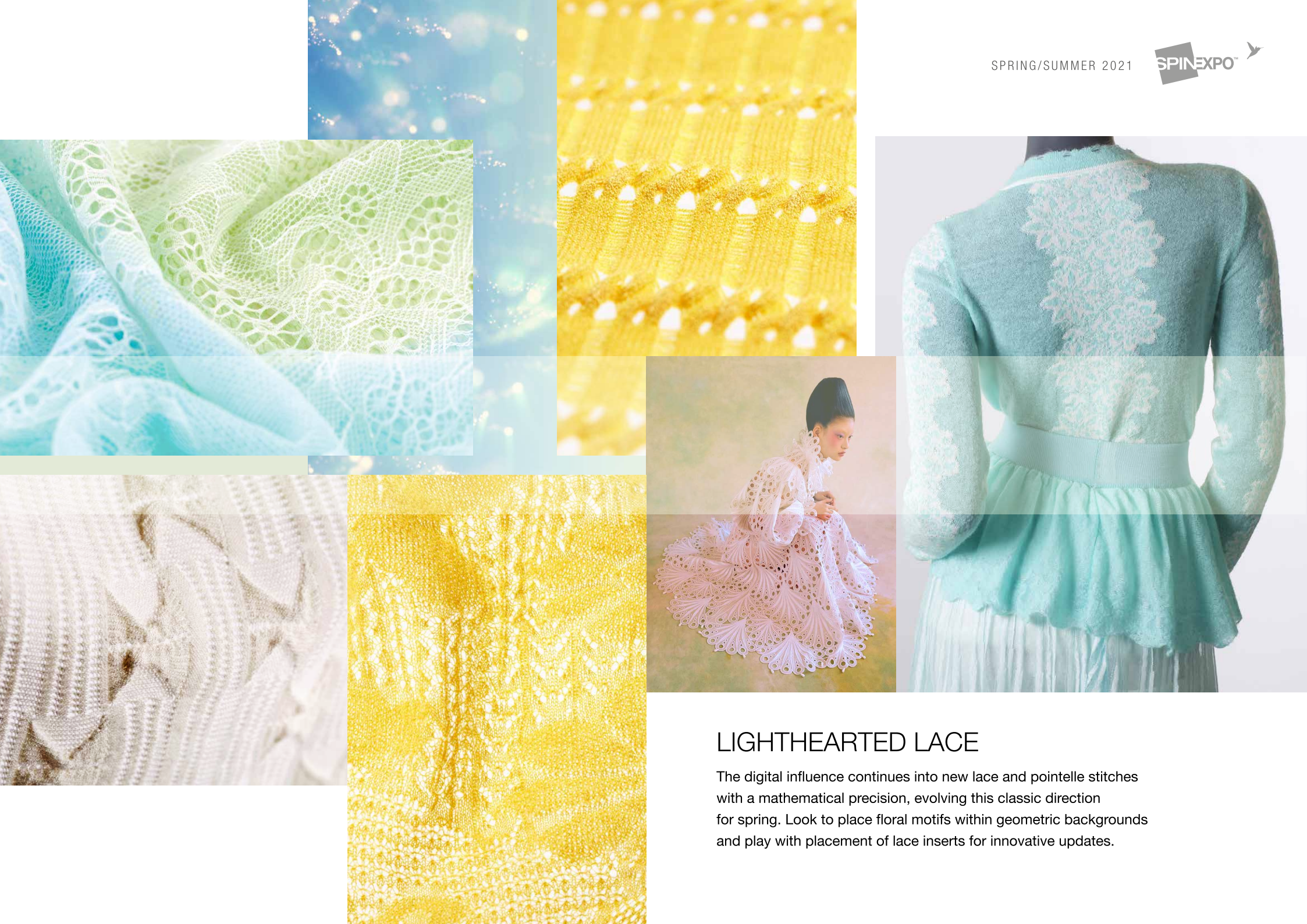
PEACEFUL POTIONS

Fluid movement is explored within the realm of knitwear as designers look for creative ways to add motion and volume to garments; new stitch innovations incorporate synthetic and glossy yarns that mimic the reflective qualities of liquids.



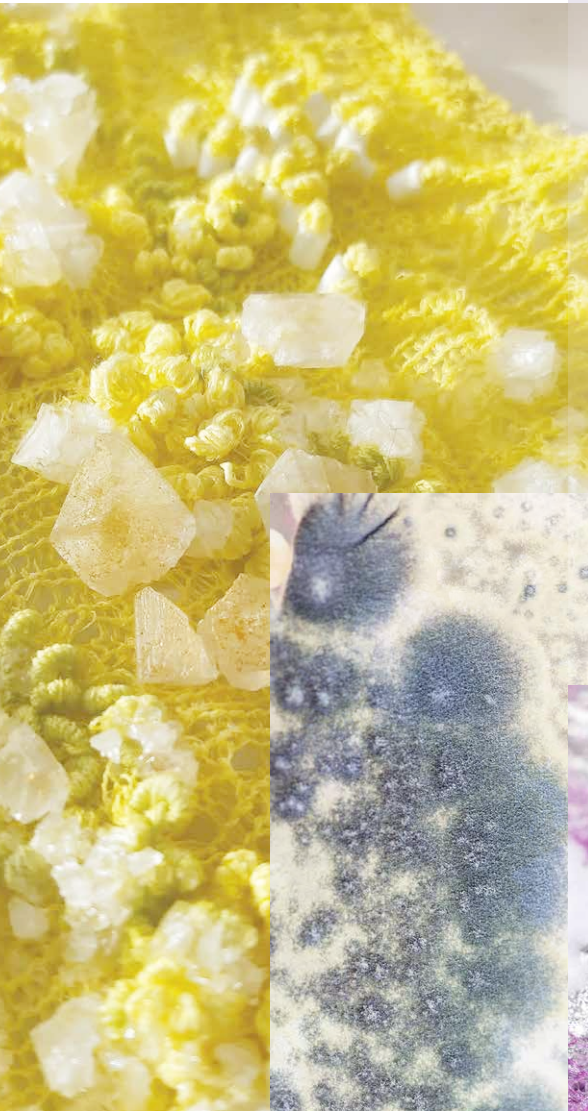
DELIGHTED DIGITAL

Abstract 3D digital images inspire modern constructions as vibrant colour-mixing creates powerful new surface directions. Look to geometric precision for new texture and jacquard patterns.



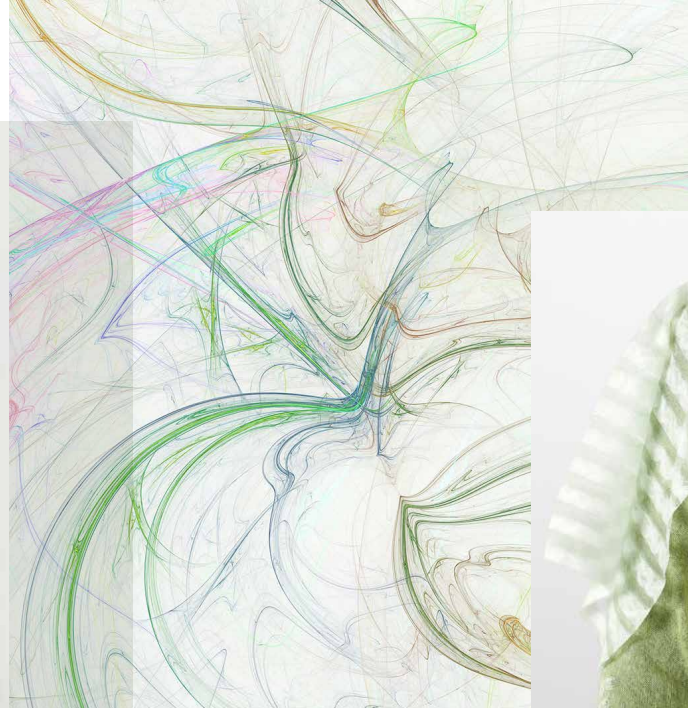
LIGHTHEARTED LACE

The digital influence continues into new lace and pointelle stitches with a mathematical precision, evolving this classic direction for spring. Look to place floral motifs within geometric backgrounds and play with placement of lace inserts for innovative updates.



BUBBLY BACTERIA

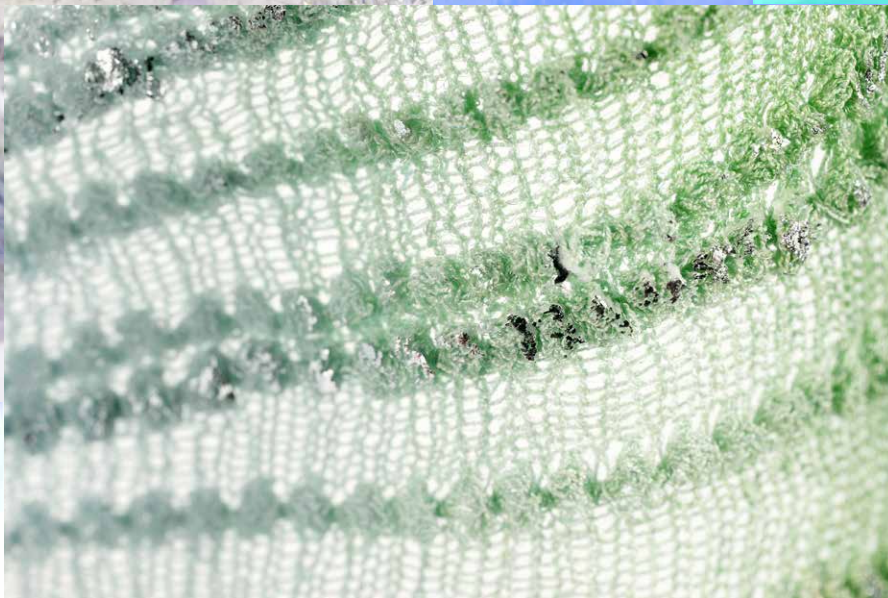
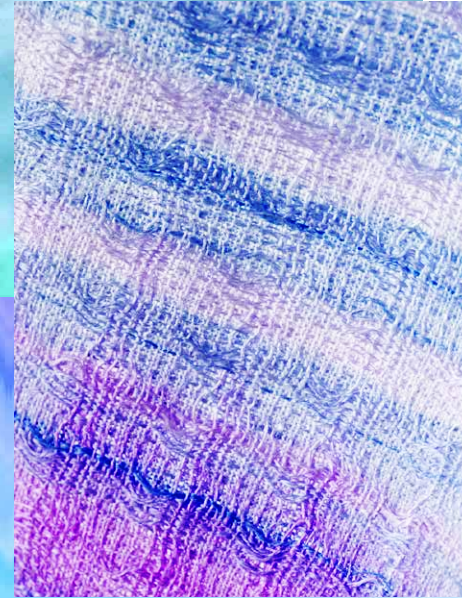
As more textile artists and small companies experiment with bacterial dying, knitted surfaces get a form of couture treatment; knitwear becomes bespoke via embroidered and beaded applications in irregular patterns. Energetic colours and spongy yarns reference the microbial patterns driving this trend.



TENDERLY TORN

Deconstruction becomes intimate as laddered stitch details and floats are engineered into luxury garments.

Bespoke jacquard patterns are carefully ruptured by fringed layers, while neck and cuff trims incorporate this softly tattered look.



DESATURATED DEVOTION

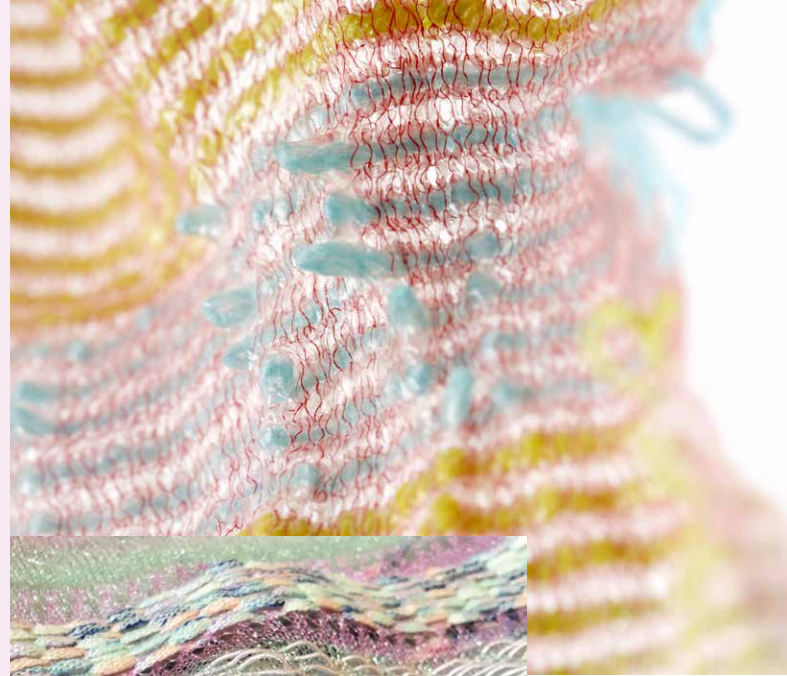
Ombre patterns have a desaturated and faded look as materials are dip-dyed or hand-painted for a soft and vintage effect.

Mixing pale coloured yarns creates similar effects in the knitting process, and surfaces look ethereal and chalky.



PLAYFUL PIXELS

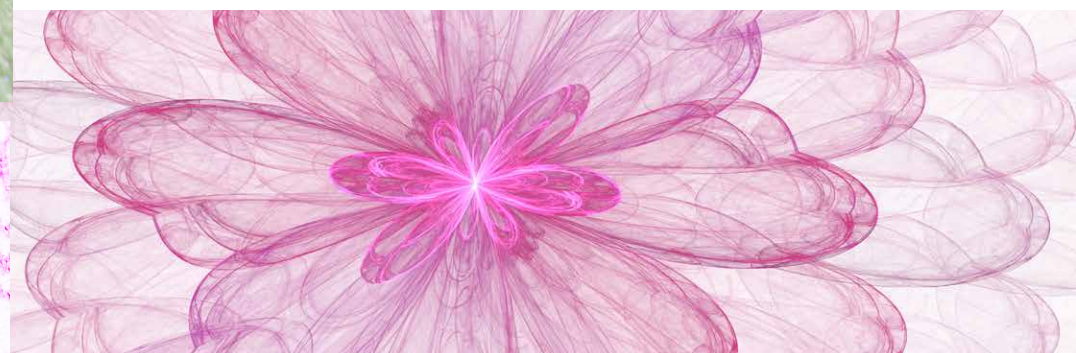
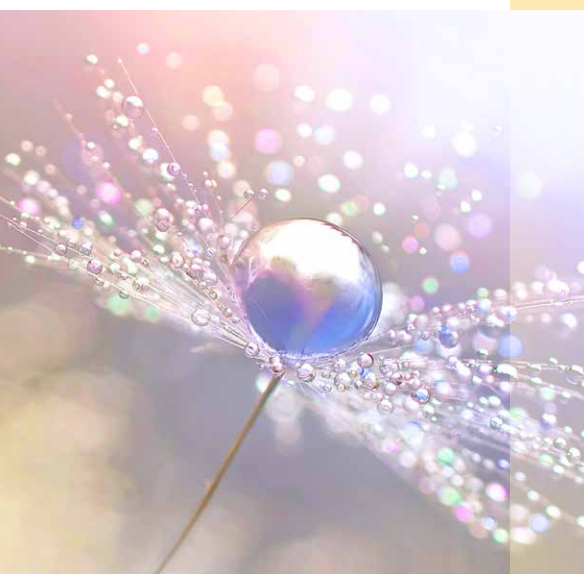
The virtual world breaks down for a lighthearted interpretation of digital patterns, with designers creating irregular flecked and spotted surfaces for a candy-coloured offering. High-tech hybrid yarns mix with smooth cottons and silky novelty yarns.



SENSITIVE STRIPES

A kaleidoscope of stitches combine to make textural stripes for spring in lightweight yarns that invigorate with translucent aspects.

Threads seem to be suspended in mid air as the brightly coloured palette alternates with the nylon filaments, creating a glossy surface.



BLISSFUL BOTANICAL

Futuristic flowers appear for spring in various manifestations, from appliquéd origami inspired florals to lacy jacquards. Computer generated precision adds a modern aspect to these charming and lighthearted patterns.



EMOTIONAL is created in partnership with SPINEXPO™
by Steven Oo, Rory Longdon, Laura McPherson, CKRC-Jinlong,
Helga Matos, Eva x Carola, Katie Hanlan, Shasha Huang, Shelly Qin

SPINNERS:

ESQUEL, LUGANG, SHI-KWAN, YARNS & COLORS, BEST SHAN,
XINNUO, YUSHENG, AA GLOBAL, BEST LEADER, HOTTA,
SHILEAD, UPW, XINAO, YIWAGOE, ZHONGXIN, ZIXIN

© Photos: Hassen Brahiti & Shutterstock