

SPRING/SUMMER 2021



SPINEXPO™ FORECAST SOCIAL

SPINEXPO™ IS THE LEADING INTERNATIONAL SOURCING EXHIBITION DEDICATED TO PROMOTING INNOVATIONS IN YARNS, FIBRES AND KNITWEAR



COLOURS

A strong summer palette is presented for this group with an irreverent and clashing colour selection that recalls summer beach parties and happy social gatherings. Bright fuchsia, raspberry and coral are mixed with citron, apple green and sky blue for robust colour-combinations, which are lightly tempered by pale lavender and lotus pink.

16-4032 TCX
PROVENCE



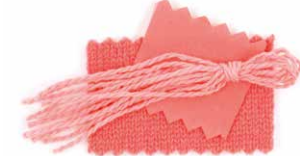
12-0646 TCX
CELANDINE



18-2328 TCX
FUSHIA RED



16-1640 TCX
SUGAR CORAL



18-1741 TCX
RASPBERRY WINE



14-1905 TCX
LOTUS



15-0543 TCX
APPLE GREEN



15-3507 TCX
LAVENDER FROST



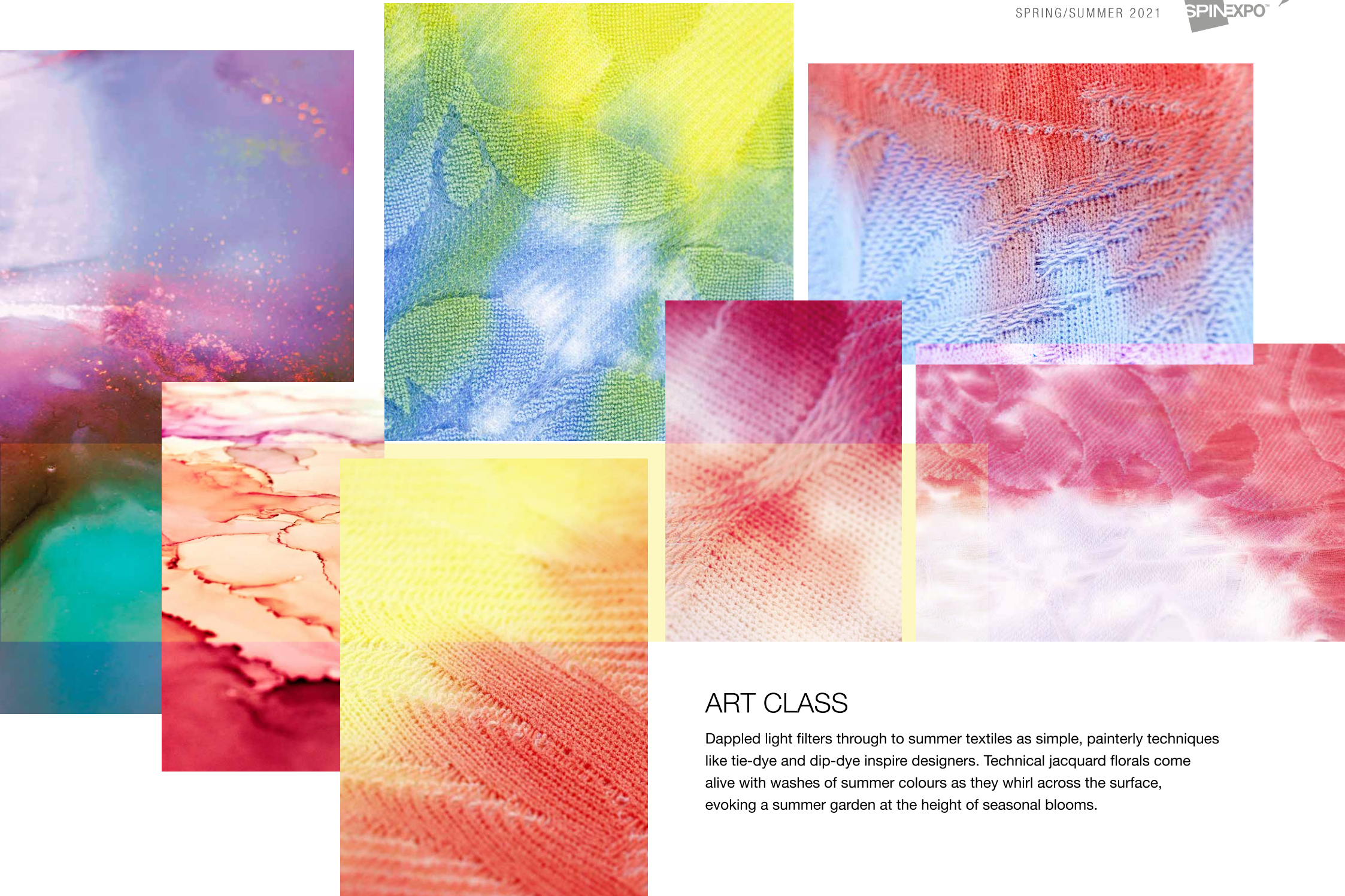


INSPIRATION

Inspiration comes from festival dressing, technical knit stitches imitating crochet and macrame.

A contemporary ethnic style mixing all codes and cultures with no restraint.

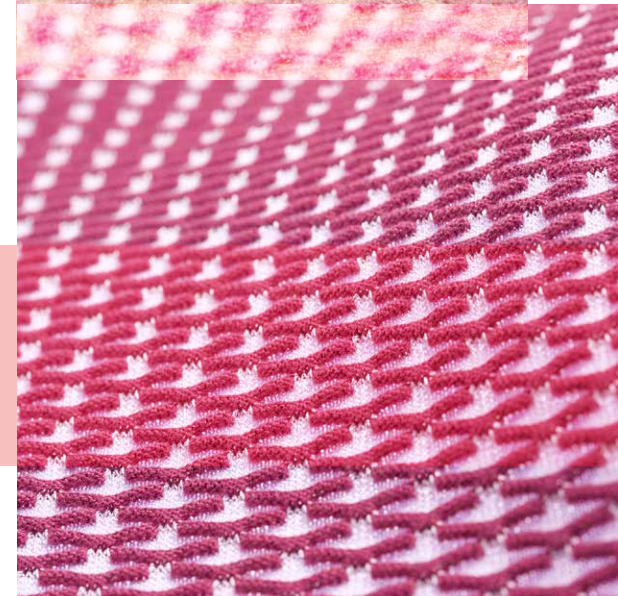
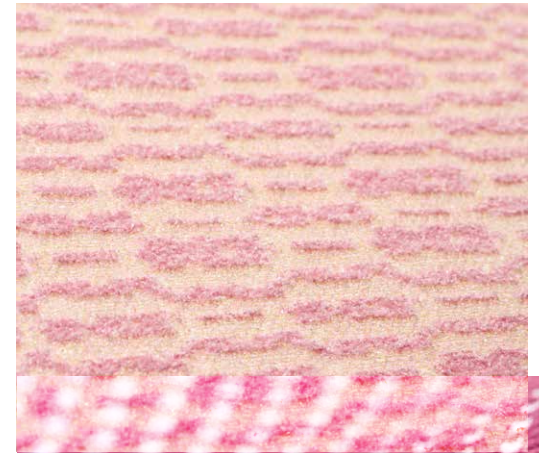
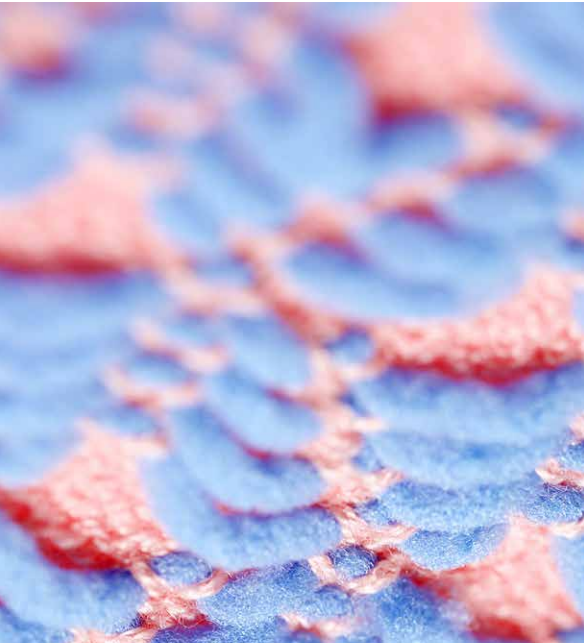
Wild novelty yarns are combined with slick synthetics for both technical and decorative surfaces.



ART CLASS

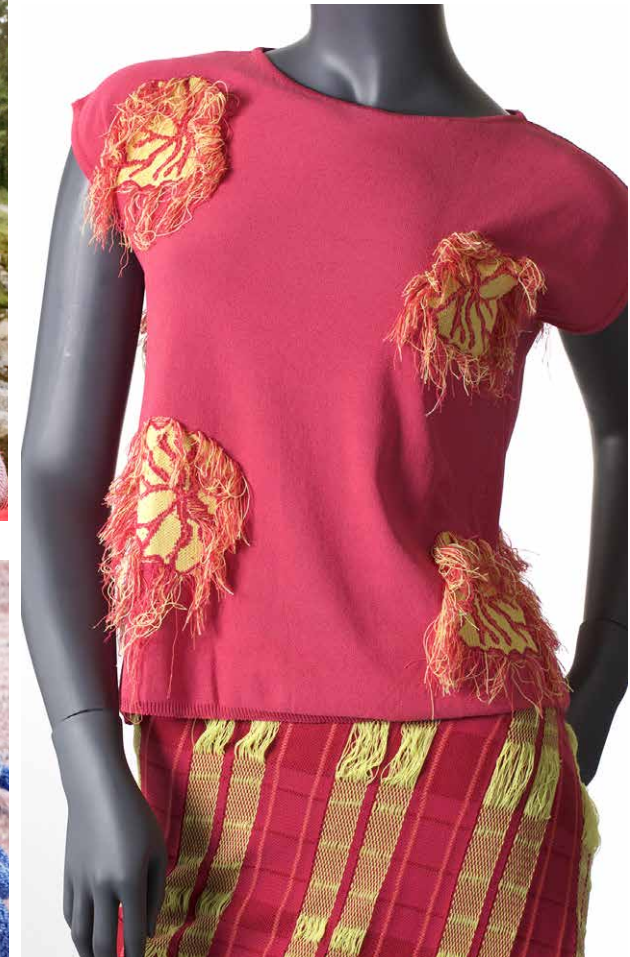
Dappled light filters through to summer textiles as simple, painterly techniques like tie-dye and dip-dye inspire designers. Technical jacquard florals come alive with washes of summer colours as they whirl across the surface, evoking a summer garden at the height of seasonal blooms.

SPRING/SUMMER 2021



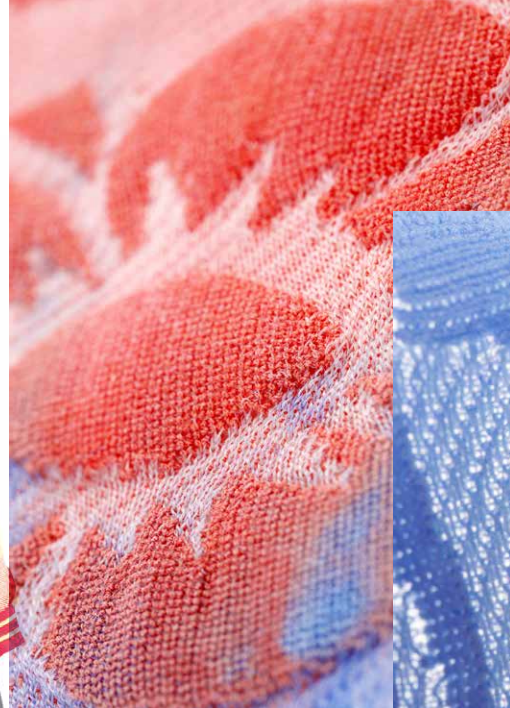
DIGITAL CROWD

Digitised patterns get a twist as graphics take their inspiration from the construction of circuit boards, while technical repeats play with different yarn weights for more lightweight summer constructions.



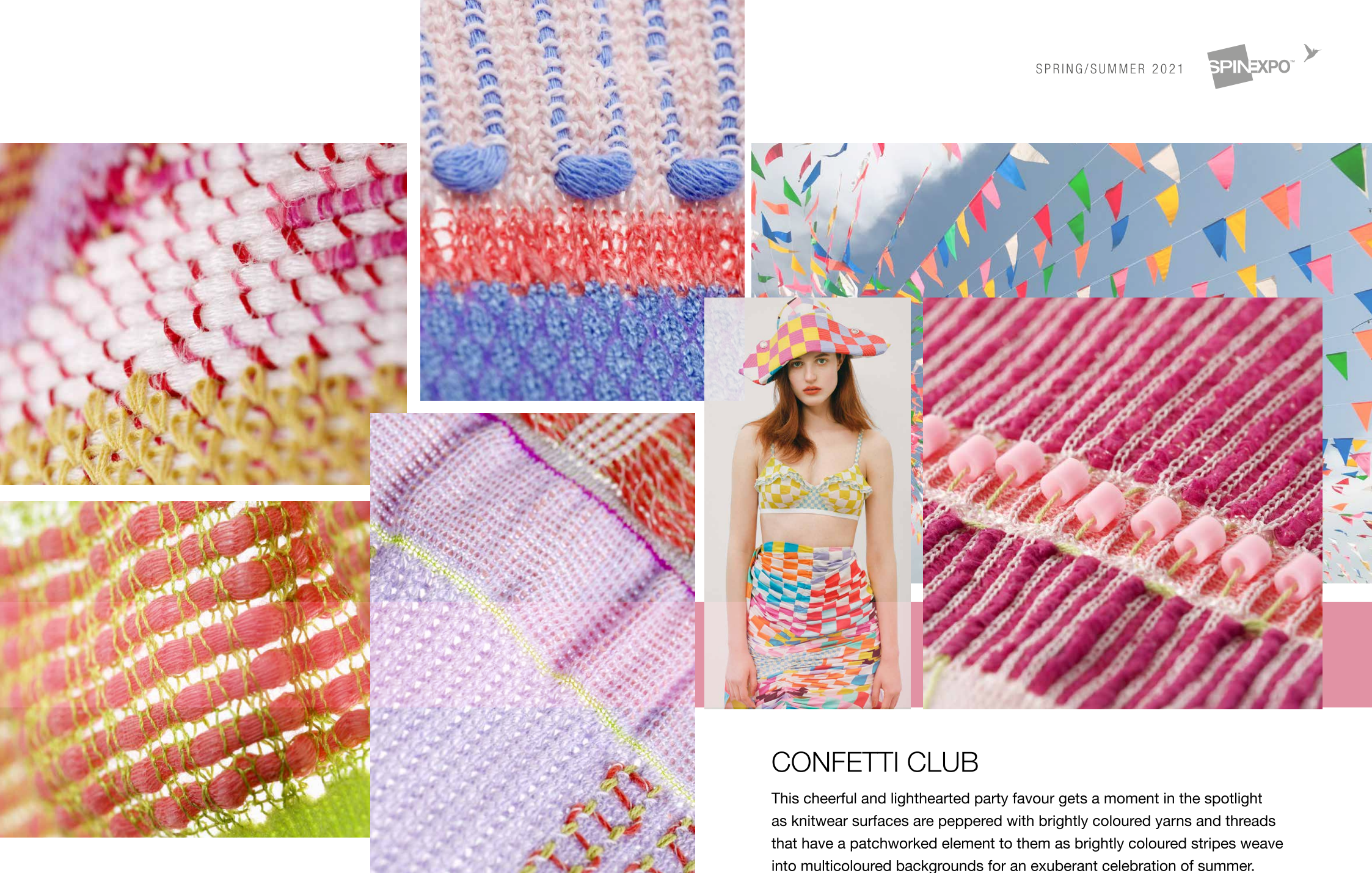
STREAMING SOCIETY

Colourful ribbons and streamers conjure festive street parties as knitwear patterns incorporate colourful floats and novelty fringes in asymmetric applications, as well as all-over garment treatments. Novelty chain and ribbon yarns provide strong support for this handcrafted look.



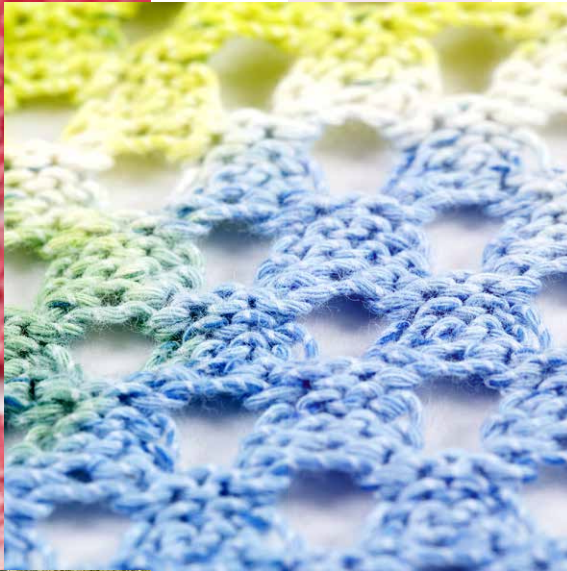
FLORAL ASSOCIATION

Floral blooms become 3D as designers look to evolve jacquard stitches for summer by combining different weights and yarn qualities for a high-definition appearance. We love the mixing of highly contrasting colours into the stitch via printing methods that evoke a handmade approach



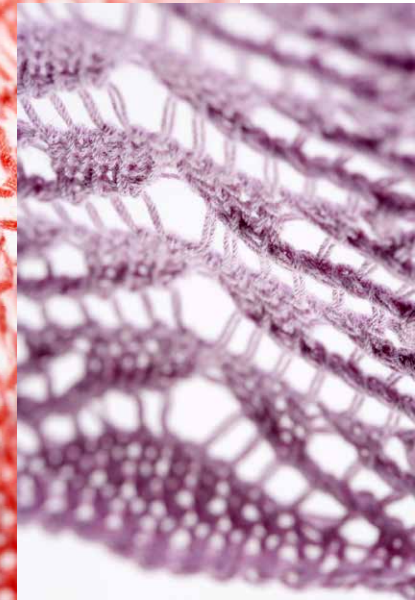
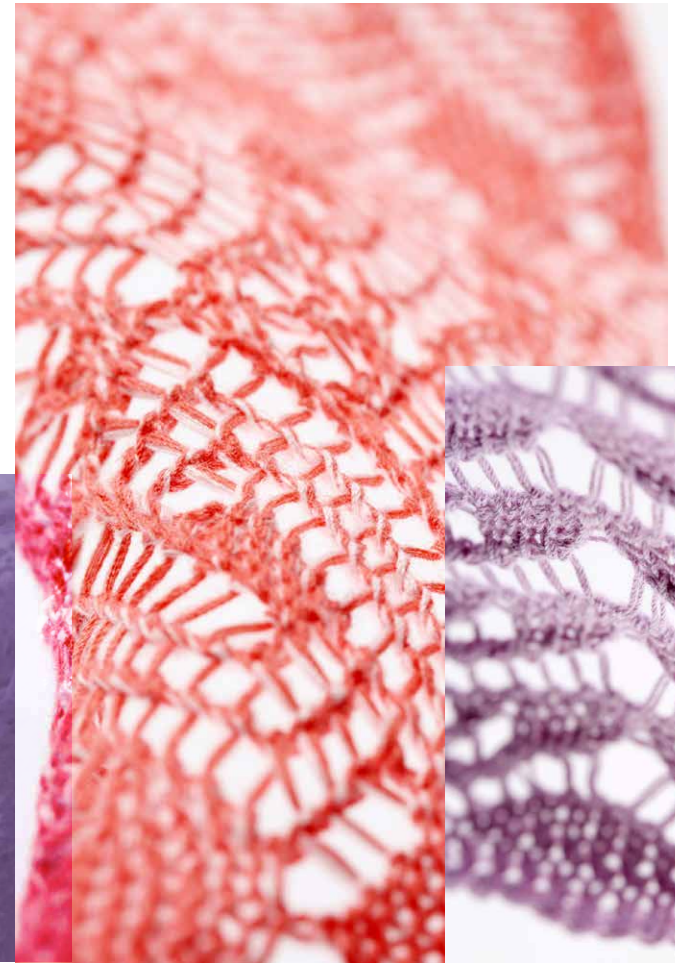
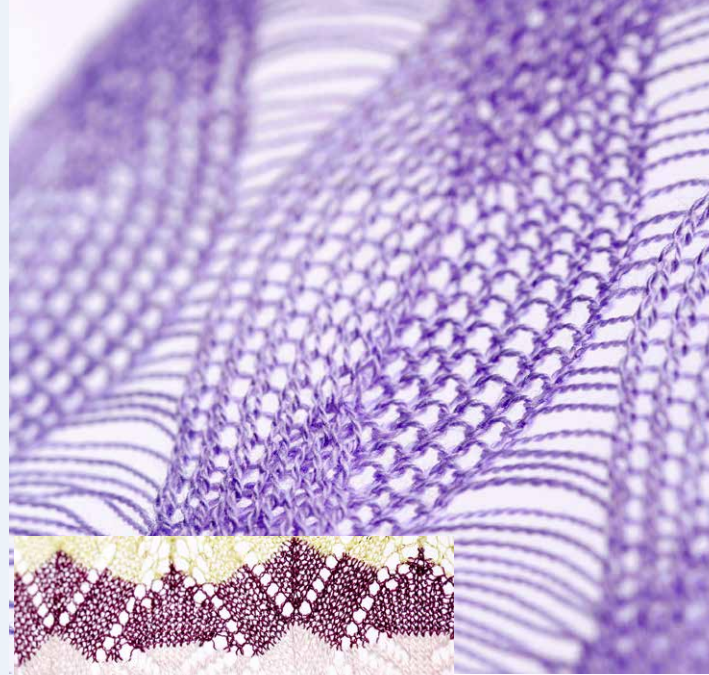
CONFETTI CLUB

This cheerful and lighthearted party favour gets a moment in the spotlight as knitwear surfaces are peppered with brightly coloured yarns and threads that have a patchworked element to them as brightly coloured stripes weave into multicoloured backgrounds for an exuberant celebration of summer.



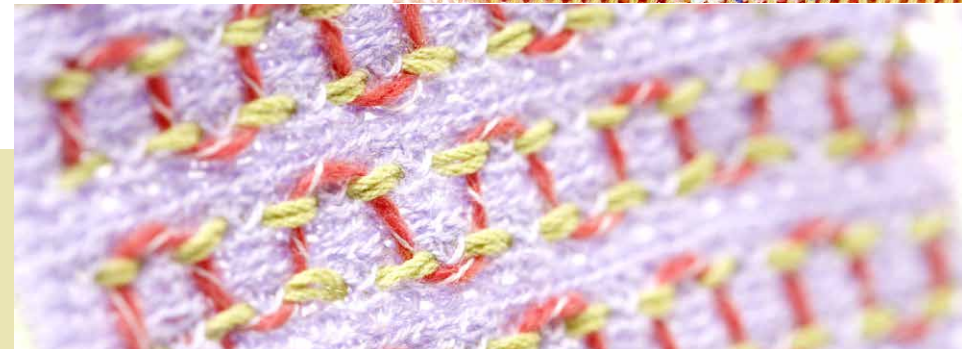
CROCHET & CO

The handcrafted look of crochet and macrame is mimicked on in knitwear by using chunky weight yarns that have natural properties like cotton and linen for a breathable summer feel. Open stitches are mixed within the same garment for further texture.



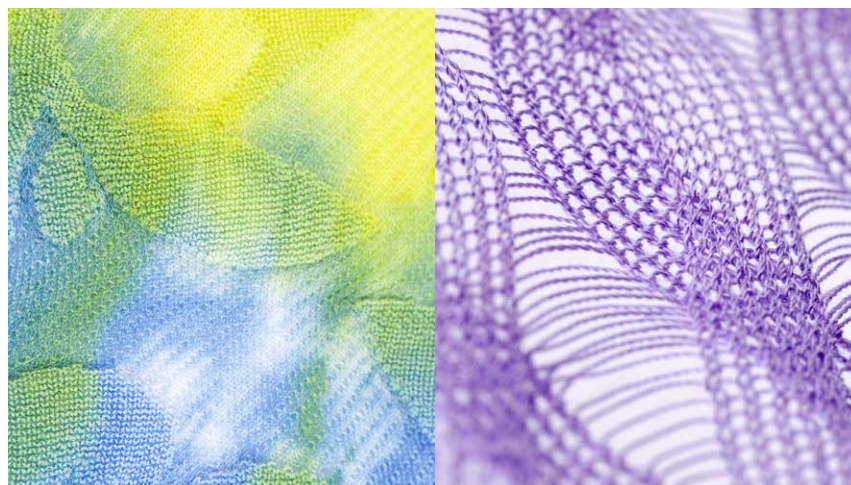
POINTELLE PARTY

Romantic lace stitches in pointelle get a glossy treatment as designers experiment with new synthetics and crisp, resistant yarns which have a cooling effect when worn in the hot summer climate.



COMMUNAL MENDING

A refreshed version of vintage 70's vibe in textiles is sensed as mills and brands look to find new ways of using left-over stock, with variegated stripes and new yarn twists becoming available for a homespun and cheerful sensibility.



SOCIAL is created in partnership with SPINEXPO™
by Steven Oo, Rory Longdon, Laura McPherson, CKRC-Jinlong,
Jo Bee, Eva x Carola, Odina Keim, Shelly Qin

SPINNERS:

ZHONGXIN, HOTTA, YIWAGOE, ZIXIN, HUBO, ESQUEL,
YARNS & COLORS, AA GLOBAL, TOP LINE, SHILEAD, BEST SHAN,
SHI-KWAN, SAWADA, UPW, XINNUO

© Photos: Hassen Brahiti & Shutterstock