



SPINEXPO™ FORECAST TRANSFORMATIONAL





19-3907 TCX
FORGED IRON



15-0850 TCX
CEYLON YELLOW



19-2430 TCX
PURPLE POTION



17-0530 TCX
GUACAMOLE



18-1651 TCX
CAYENNE



19-0510 TCX
KALAMATA



19-4342 TCX
SEAPORT



19-1121 TCX
PINECONE



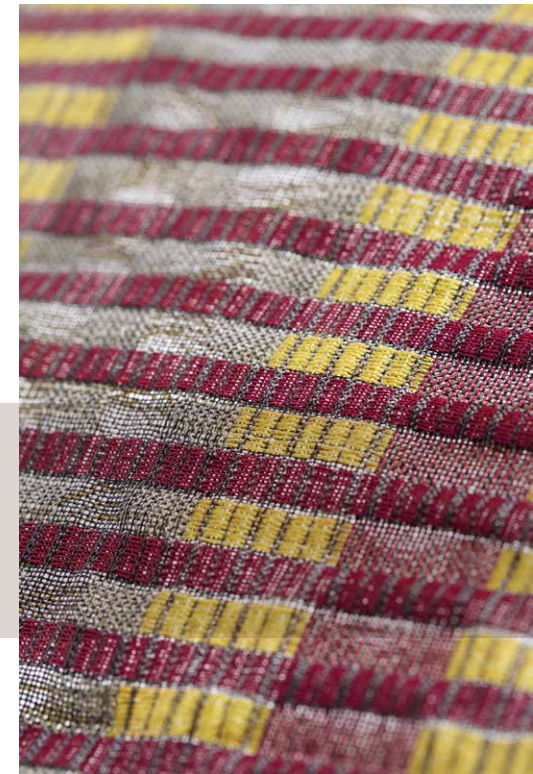
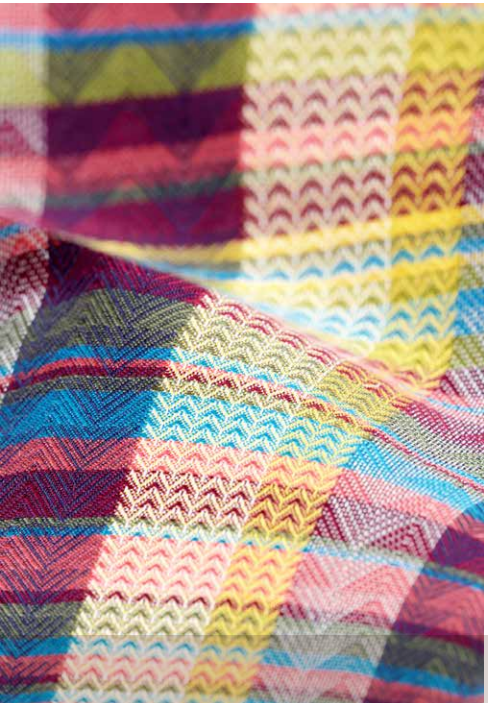
COLOURS

Richly saturated jewel tones of cayenne, plum and ceylon play together in a joyous cacophony which is enhanced further by the cooling tones of dark turquoise, rich moss and guacamole. A truly transitional colour palette that draws from the deepening colours of summer gardens; the tones of pinecone and iron herald the arrival of autumn.



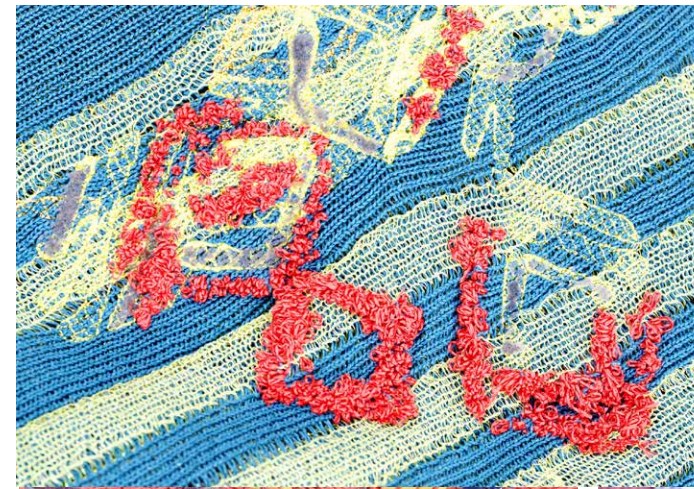
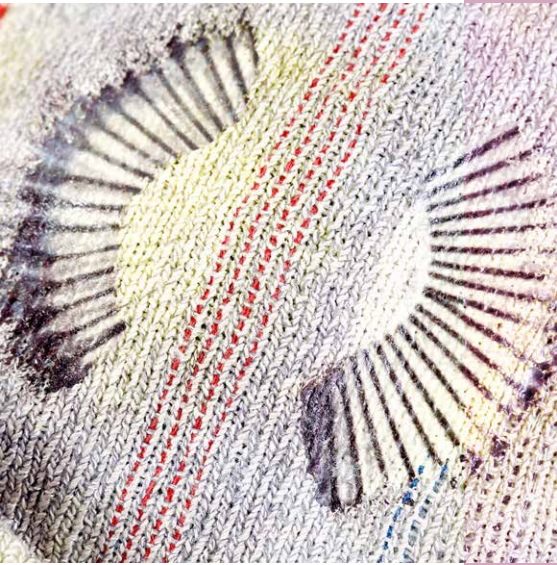
INSPIRATION

Inspiration is drawn from many parts from the world, with traditional patterns and colour combos pairing together in clashing harmonies. Urban meets rural and primitive meets modernism; unusual layering of techniques and patterns combine checks and plaids with wild florals and handcrafted aspects for rhythmic vibrations.



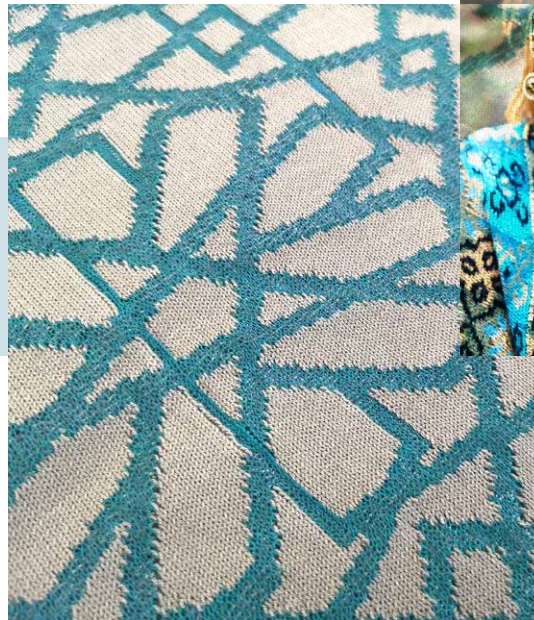
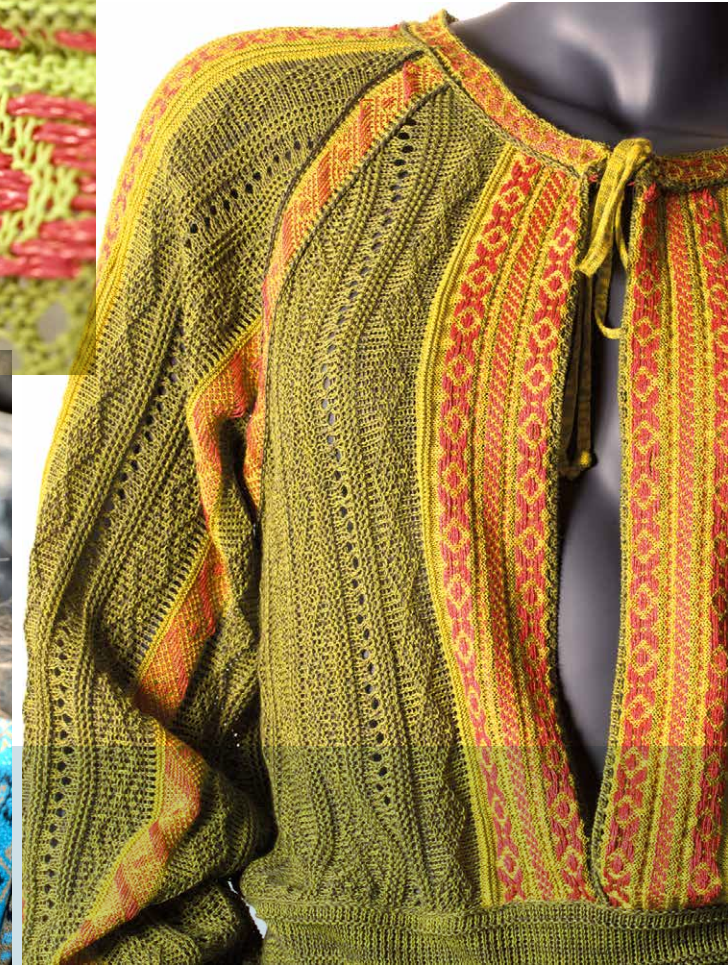
REMODELED PLAID

Plaids are re-energised via colourful jacquards and madras inspired wovens that incorporate distorted traditional patterns, either incorporated or appliquéd on top for further dimension.



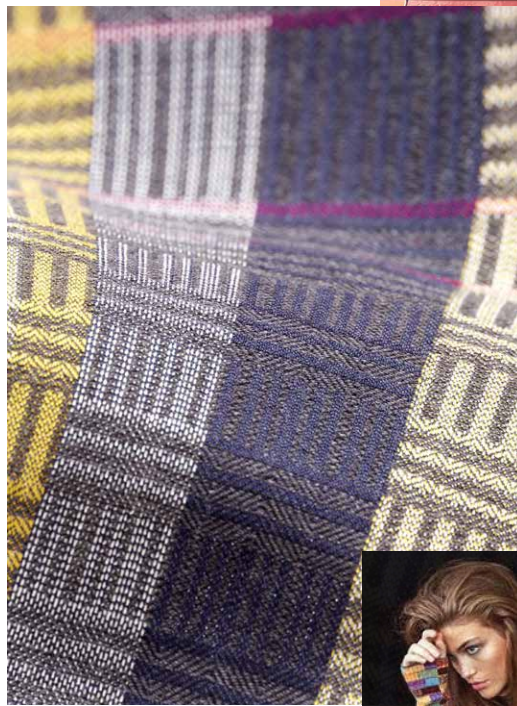
CANVAS CORRECTION

Disrupted geometrics are given proper attention via hand-painted applications and placed prints. A lovely way to encapsulate Transformational's clashing nature is to juxtapose painted yarns with solid colours via regimented jacquards.



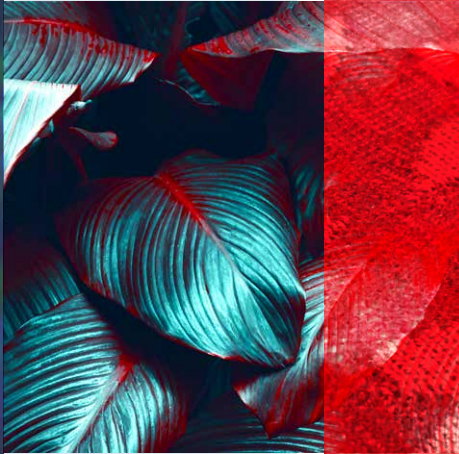
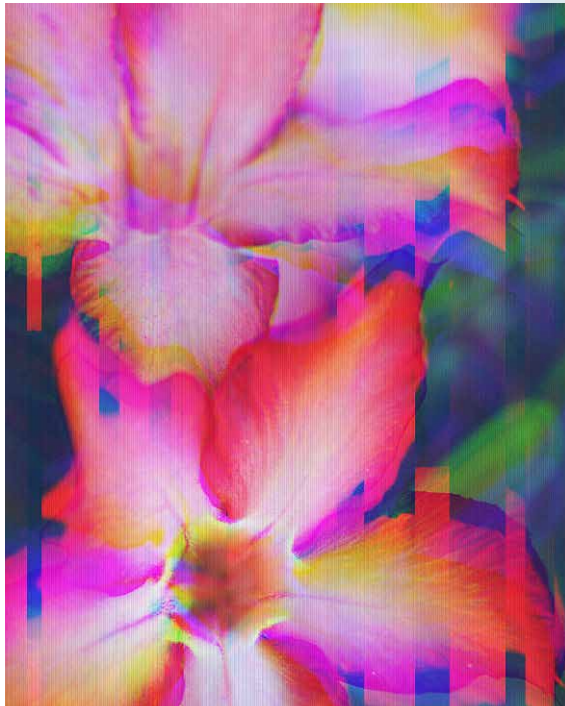
TAPESTRY REVISION

The colourful and bold geometrics of the late 60's and early 70's are refreshed with summer yarns and a renewed appreciation for the clashing harmonies favoured at this time; beautifully inlaid borders and details add refinement.



GRID SHIFT

Classical symmetry is left behind as grid and checked patterns get knocked aside. Boldly colourful jacquard and intarsia patterns play with many contrasts, not just the colours but also solid knit combining with ethereal drop-stitch elements for a brand new texture.



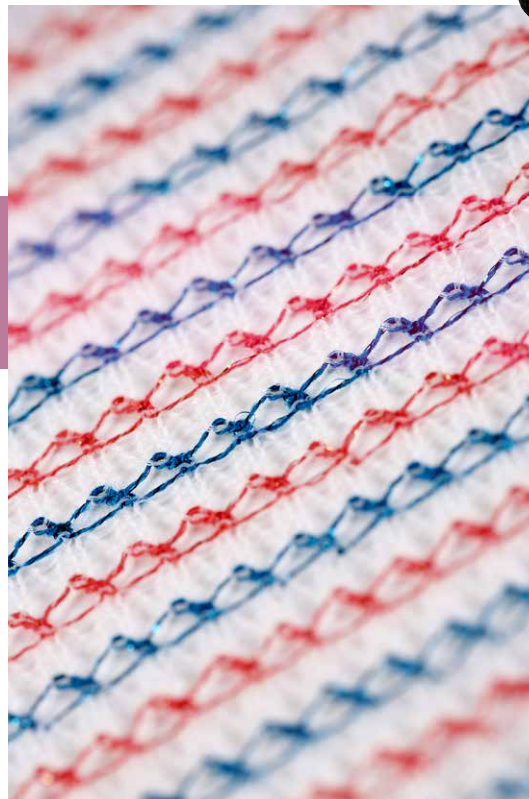
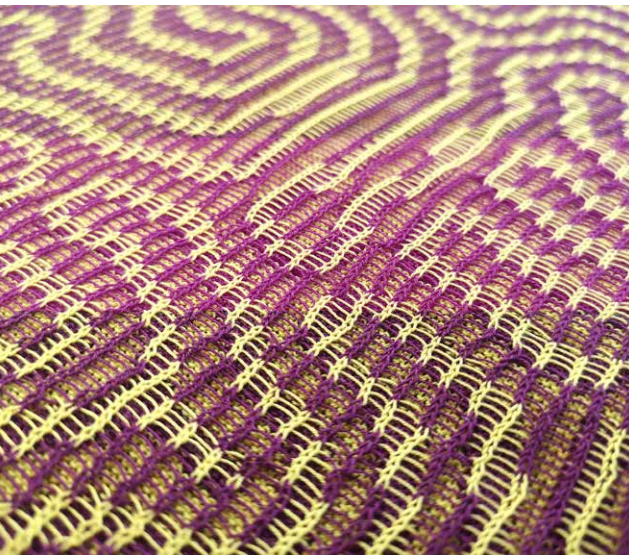
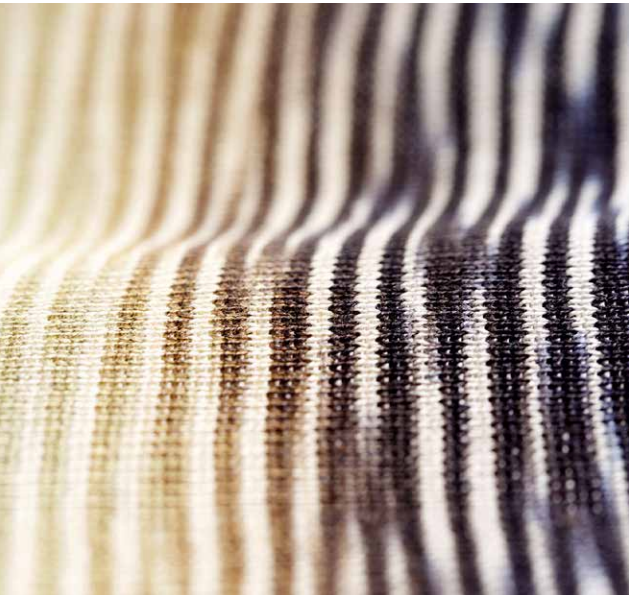
FLORAL DISTORTION

Flowers become virtually interpreted as pigments and hues are ultra-saturated for a magical garden experience. Contrasting yarns with silky and reflective elements are cast in dark hues for a rich evening look.



PATTERN SWITCH

Traditional patterns become distorted as we turn to nature's masters of transformation, with a macro look at butterfly wings and chameleons. Their beauty inspires a highly sophisticated method of layering patterns and colours together for a joyful celebration of summertime.



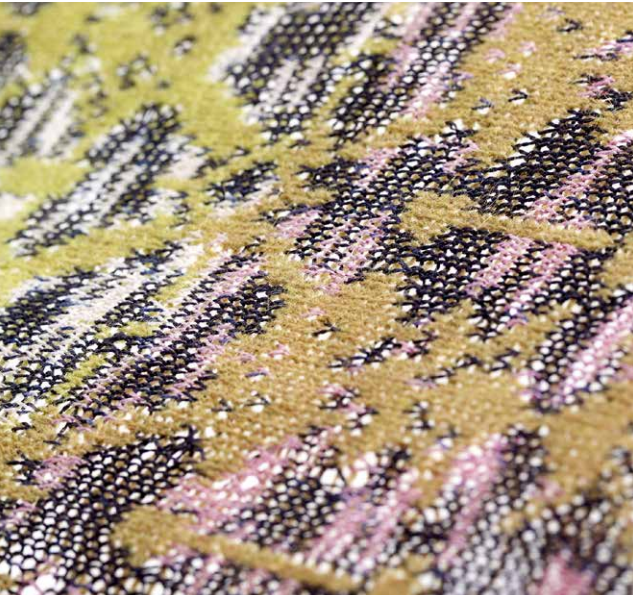
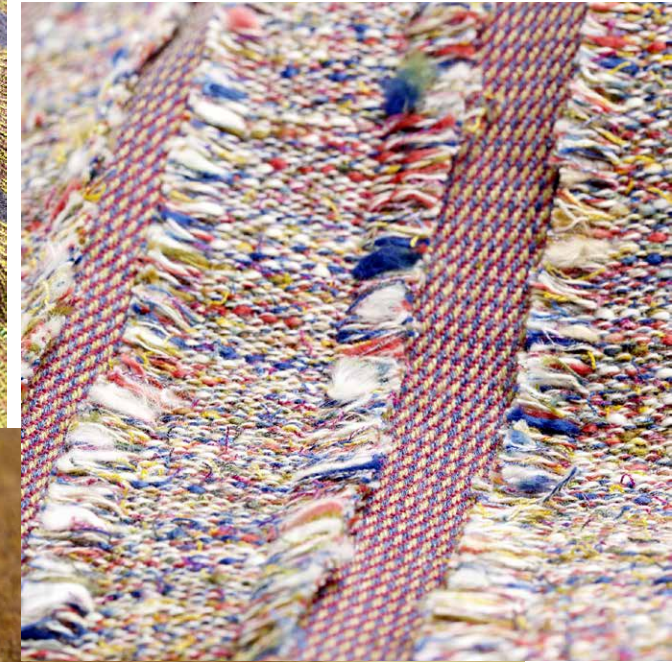
STRIPED MODULATION

Finely variegated patterns for knitwear take a botanical turn as designers try to capture the beauty of finely veined tropical leaves within summer knitwear. With a faintly undulating colour play or textural contrast, these lightweight articles are perfect for hot summer weather.



LANDSCAPED VARIATION

Picturesque summer landscapes inspire fresh contemporary interpretations in jacquards and intarsia patterns. Further definition is added via lightly felted applications and glossy hand-painted additions to further mimic the textural aspects of our pastoral nature.



RUSTIC REFINEMENT

The tactile beauty and patterns found in traditional basketry are refreshed as designers play with plying yarns together for a tweed effect that works perfectly for the summer months via featherweight gauges and natural yarns.



TRANSFORMATIONAL is created in partnership with SPINEXPO™
by Steven Oo, Rory Longdon, Laura McPherson, CKRC-Jinlong,
Helga Matos, Katie Hanlan, Odina Keim, Kemi Clark

SPINNERS:

ESQUEL, BEST LEADER, YIWAGOE, SAWADA, SHILEAD, XINFANG,
UPW, XINAO, POLYACE, BEST SHAN, CONSINEE, YARNS & COLORS,
BIELLA YARN, LUGANG, AA GLOBAL, ZHONGXIN, HENG GUANG

© Photos: Hassen Brahiti & Shutterstock