

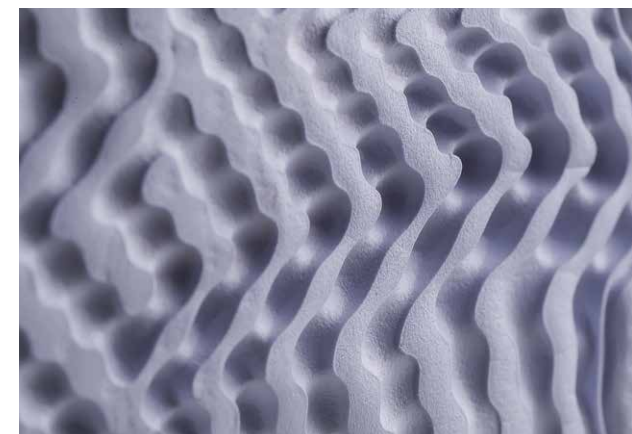
SPRING/SUMMER 2021



SPINEXPO™

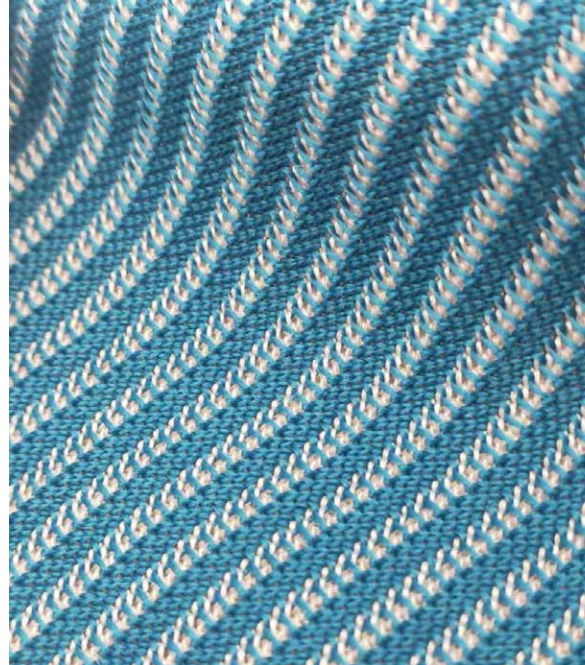
SPINACTIVE WRAP

SPINEXPO™ IS THE LEADING INTERNATIONAL SOURCING EXHIBITION DEDICATED TO PROMOTING INNOVATIONS IN YARNS, FIBRES AND KNITWEAR



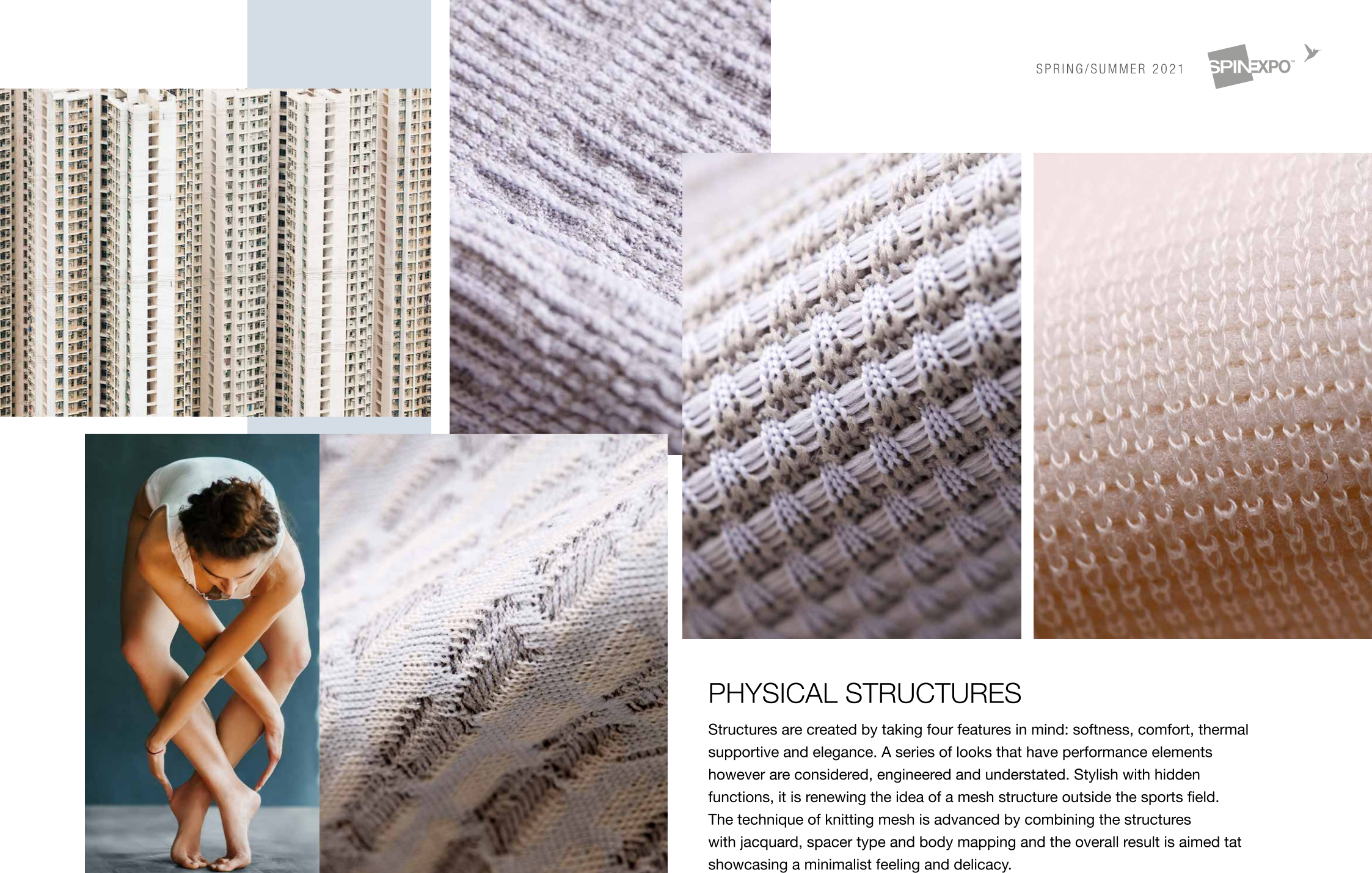
INTRO

For the activewear portion of SPINEXPO™, the designers Eva X Carola chose to explore our main trends of Physical, Mental and Emotional in addition to a small capsule of Casa Z. In this wrap we take a look at the garments and structures created for the Spring 2021 edition and explore these concepts further.



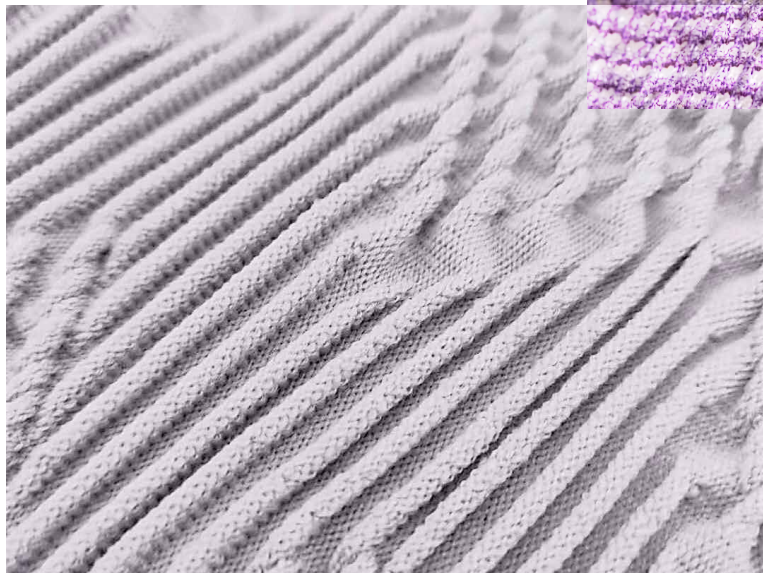
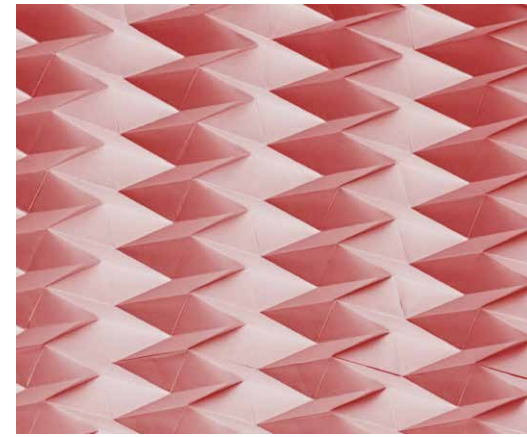
PHYSICAL

Traditional mesh structures used for sportswear have been transformed into elegant, luxe materials with a soft shine, drape and touch. The structures give the breathability yet remain lightweight, which is needed for an early spring garment. The knitting techniques are advanced by combining the mesh structures into an engineered pattern, articulating the body via a refined selection of yarns from Sawada. Mesh structures are developed from a functional as well aesthetic point of view. Generating a moisture management system while remaining and creating a fashion inspired look.



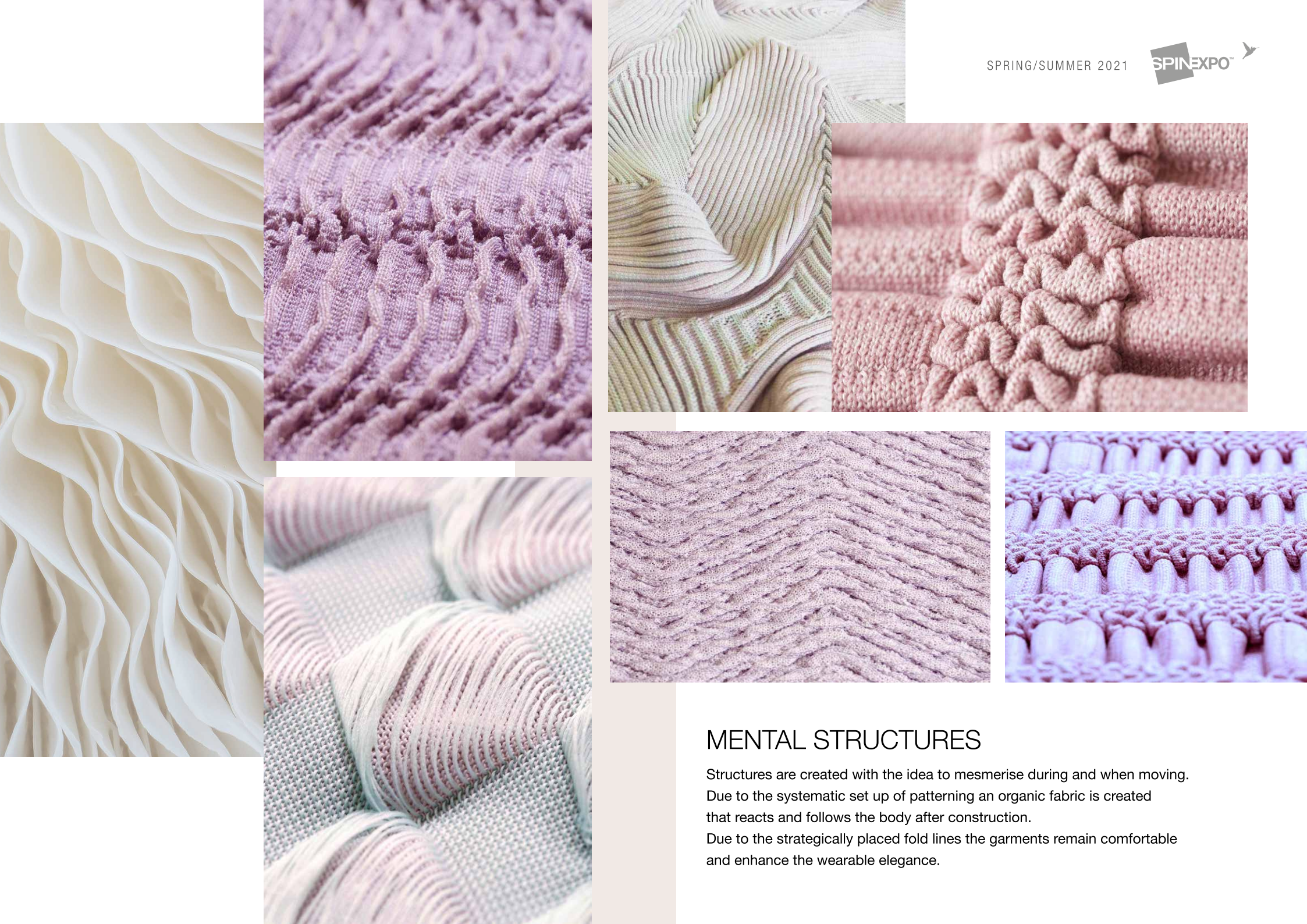
PHYSICAL STRUCTURES

Structures are created by taking four features in mind: softness, comfort, thermal supportive and elegance. A series of looks that have performance elements however are considered, engineered and understated. Stylish with hidden functions, it is renewing the idea of a mesh structure outside the sports field. The technique of knitting mesh is advanced by combining the structures with jacquard, spacer type and body mapping and the overall result is aimed at showcasing a minimalist feeling and delicacy.



MENTAL

Via directional knitting techniques this look explores different kind of directions in creating movement and stretch in materials. The top has been created out of one yarn and by playing with the stitches a lightweight, draped form has been created. The garment shape is formed out of a single tube to avoid any waste. The pants are made on a double jersey machine and via a repetitive pattern and elastic base it resulted in a sophisticated, comfortable and easy to wear crop pants.



MENTAL STRUCTURES

Structures are created with the idea to mesmerise during and when moving.

Due to the systematic set up of patterning an organic fabric is created that reacts and follows the body after construction.

Due to the strategically placed fold lines the garments remain comfortable and enhance the wearable elegance.



EMOTIONAL

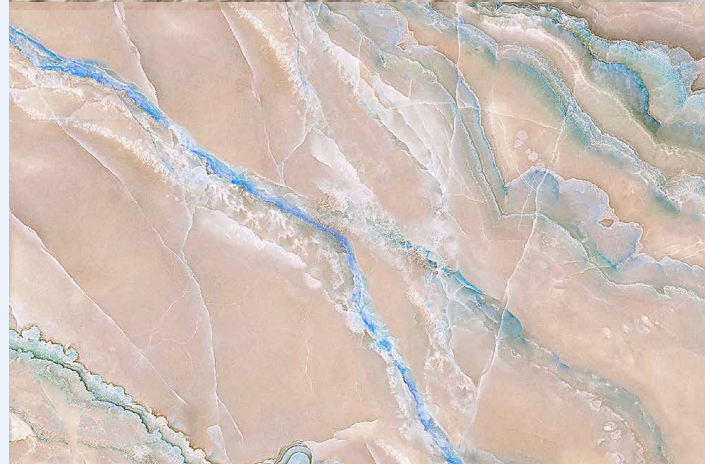
A velvet natural touch is created on the surface of the bodysuit and the skirt is made out of a combination of a sculpted - and transparent material. Intimates transferred to sophisticated lifestyle garments with a strong natural touch and feel.

By taking new methods from circular knitting (jersey material) and combining them with the seamless technology a new dimension in jersey material has been created. Soft, transparent and lightweight material that can be engineered to personal preference while remaining the flexibility and speed of seamless technology. The dress can be worn either with or without the second layer 'skirt'.



EMOTIONAL STRUCTURES

Combining alternative kind of spandex yarns or no spandex we aimed to create a blotchy effect on color intensity. Via floating and missed structures in combination with intriguing patterning the materials have a shimmering effect when viewed from different angles. This also created an organic and irregular effect. By blending the purity of the yarns a new natural material was created.



CASA Z

The collection of sleepwear ranges from intimates to loungewear to home-wear. To deliver ultimate performance, it will help if we rest our minds and our bodies through restorative, nourishing sleep. The right textiles, when worn against the skin, can deliver a wealth of benefits to the sleeping and relaxing body, including comfort and thermal regulation. Other elements considered via yarn selection and structures are sensual, silk-skin effects, calming aesthetics, elegance and refinement.



CASA Z STRUCTURES

Refined fleece structures using new synthetics are plated with 100% cashmere yarns to enhance comfort and relaxation. Cocooning effects and moisture management effect of hydrophilic and hydrophobic yarns are further explored. Sophisticated floating structures by using micro patterns are created to achieve soft compression while using natural fibres and yarns, giving an elegant look and feel using the structure to create more matt and shine patterns.



SPINACTIVE is created in partnership with SPINEXPO™
by Eva x Carola

SPINNERS:

SAWADA, XINNUO, ESQUEL, YIWAGO, XINAO,
CONSINEE, SHILEAD, POLYACE

© Photos: Hassen Brahiti & Shutterstock