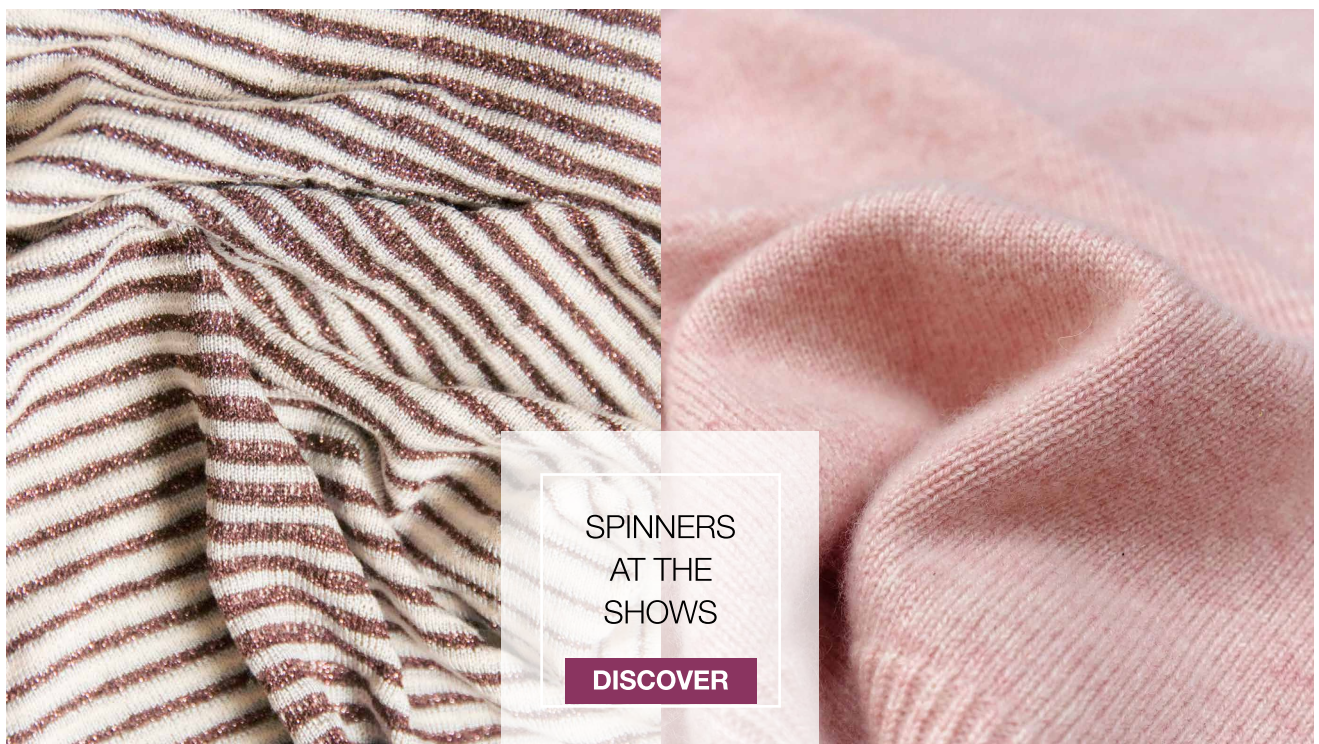




# SPINEXPO™

THE PRIMARY EXHIBITION FOR YARNS & KNITWEAR



SPINNERS  
AT THE  
SHOWS

DISCOVER

FIBRES | YARNS | KNITS | CIRCULAR KNITS | ACTIVEWEAR | SOCKS | HAND-KNITTING WOOLS

## Save the Dates

35<sup>TH</sup> SESSION

### SPINEXPO™ SHANGHAI

## 1-2-3 SEPTEMBER 2020

SHANGHAI WORLD EXPO CONVENTION & EXHIBITION CENTRE  
1099 GUOZHAN ROAD - PUDONG - SHANGHAI

**OPENING HOURS: 9.00 AM TO 6.00 PM – 1-2 SEPTEMBER 2020**  
**9.00 AM TO 4.00 PM – 3<sup>RD</sup> SEPTEMBER 2020**

SPINEXPO™ present Autumn/Winter 2021-22 yarns, fibres and knitwear collections for all forward-thinking and creative knitwear industry professionals.

SPINEXPO™ is an international event that brings together top-class spinners and integrated high-fashion knitwear manufacturers.

It caters to the knitwear, weaving, hosiery, socks, shoes, home textile and technical sectors.

Don't miss signature industry advancements live, the latest knitwear collection developments and the leading technical innovations in yarns and fibres after the turmoil of the Covid19.

**This session hosts 185 spinners and 18 knitwear manufacturers.**

**DUE TO COVID 19, ALL VISITORS NEED TO HAVE PRE-REGISTERED**  
**WWW.SPINEXPO.COM**

and received a bar code, and present an ID card  
and a business card matching one another, together with the health QR code.  
No entrance allowed outside this process.

**DO not forget ID and your business card!**

**Visit us at [WWW.SPINEXPO.COM](http://WWW.SPINEXPO.COM)**

**Pre-register and view the extensive list of exhibitors and show specific information.**

**For Trends : [WWW.SPINEXPLORE.COM](http://WWW.SPINEXPLORE.COM)**

save  
the  
dates



35<sup>TH</sup> SESSION  
**SHANGHAI**  
1-2-3 SEPT. 2020  
WORLD EXPO EXHIBITION  
& CONVENTION CENTRE

B2B EVENT  
**PARIS**  
15-16 SEPT. 2020  
ATRIUM  
SAINT GERMAIN

B2B EVENT  
**HONG KONG**  
23-24 SEPT. 2020  
THE ANNEX  
NAN FUNG PLACE





# SPINEXPO™

## SPINNERS AT THE SHOWS

Autumn/Winter 2021

FROM FANCY YARNS TO CASHMERE,  
SPINNERS AT THE SHOW HAVE FUNCTIONALITY IN MIND



Another yarn of exceptional qualities is 1535 Cashmere, spun from white cashmere of Inner Mongolia Arbas. Its fineness is between 13 and 15 microns, its length equal or higher than 35 mm and it is extremely white. It comes from goats that graze at 1500 m altitude, and each goat produces between 50 and 80g of cashmere per year. There is an air layer in the middle of the fibre which makes it lighter, thinner, smoother and spongier than other cashmere. A yarn as comfortable and natural as your own skin!



### **GALAXY get inspired by classic hand-drawn patterns of British artist William Morris**

Galaxy AW 21-22 yarn collection is inspired by natural patterns and plants as pattern, to approach the purest state of nature, far from modern over-retouching. It is driven for their commitment to environmental protection. Colours are natural, vibrant green and rich saffron combined with calm gray/blue and pure white as a base. A collection meant to arouse people's need to live in harmony with nature and give designers a source of creative imagination. reduce their anxiety and enhance their sense of happiness in the way they dress.

### **YIWAGOE launches two new yarns!**

Gospel is much lighter than other types of wool, has a cashmere touch and its anti-pilling testing reaches 3°. This is a yarn inspired by the Takumi spirit that YSK inherited from.

In order to achieve the lightness and cashmere touch of the yarn, an ingredient has been added, on the market only from August to November; improvement of the spinning machine was also necessary as well as the redesigning of the spinning process. YSK is the only spinner who can provide this type of yarn in China.



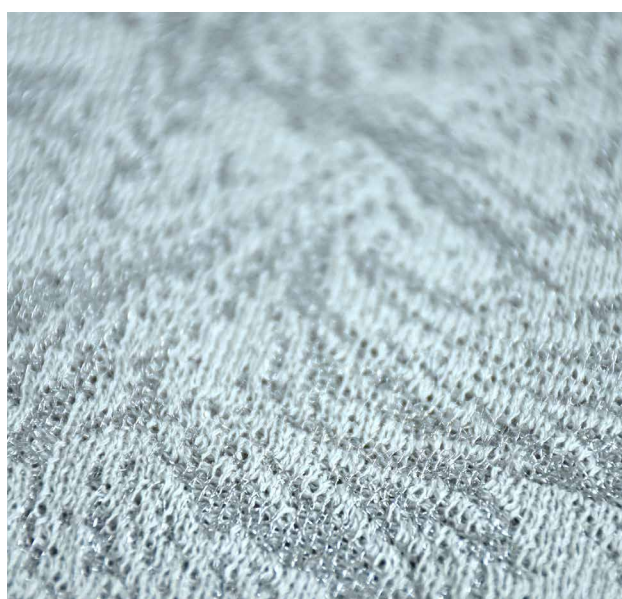
### **SHILEAD strengthen its ecological and functional yarns direction**

Shilead is known for its commitment to sustainability in the dyeing process, with its waste water reuse system, the use of solar panels and of ZDHC approved dyeing stuff, making the process environmentally friendly.

Their AW 21-22 collection is divided into 3 parts:

- Traceable – all the raw materials (cotton – viscose – recycled fibre) come from traceable sources, and all the dyeing stuff and auxiliaries are certified to be environmentally friendly.
- Biodegradable – which helps to reduce garment waste and achieve healthy ecological cycle.
- Health protection – with the development of more antibacterial and thermal qualities for protection and adaptation of the weather change

Prices are always competitive and products fashionable!



**Due to Covid 19, all visitors need to have pre-registered**

**WWW.SPINEXPO.COM**

save  
the  
dates



35<sup>TH</sup> SESSION  
**SHANGHAI**  
1-2-3 SEPT. 2020  
WORLD EXPO EXHIBITION  
& CONVENTION CENTRE

B2B EVENT  
**PARIS**  
15-16 SEPT. 2020  
ATRIUM  
SAINT GERMAIN

B2B EVENT  
**HONG KONG**  
23-24 SEPT. 2020  
THE ANNEX  
NAN FUNG PLACE