



PARIS - NEW YORK - SHANGHAI

Confirmed New dates

SPINEXPO™ SHANGHAI

1-2-3 APRIL 2021

WORLD EXPO EXHIBITION & CONVENTION CENTRE



SPRING/SUMMER 2022 COLLECTIONS  
+ PREVIEW OF AUTUMN/WINTER 2023

**PRE-REGISTRATION IS COMPULSORY – NO ONSITE ENTRANCE**  
**WWW.SPINEXPO.COM**

*SPINEXPO™ Shanghai offers a specialised platform between top level partners of the textile chain and top-level fibres promoters, spinners, knitters, and knitwear machinery manufacturers working together in tight collaboration.*

*SPINEXPO™ caters to the brand names, knitters, producers of knitted fabrics, weavers, lingerie makers, the hosiery and sock industry, home furnishing and hand-knitting yarns.*

#### Fair Facts

##### Dates & hours of opening:

1-2 April 2021 - 9.00 a.m. to 6.00 p.m.  
3 April 2021 - 9.00 a.m. to 3.00 p.m.

Please note that the upstream suppliers (fibre, top, machinery, technology, etc), spinners and students will only be accepted on the last show day.

All visitors need to comply with the sanitary regulations issued by the Venue & Police Dept

##### Venue:

Shanghai World Expo Convention & Exhibition Centre  
N° 1099 Guozhan Rd - Pudong - Shanghai

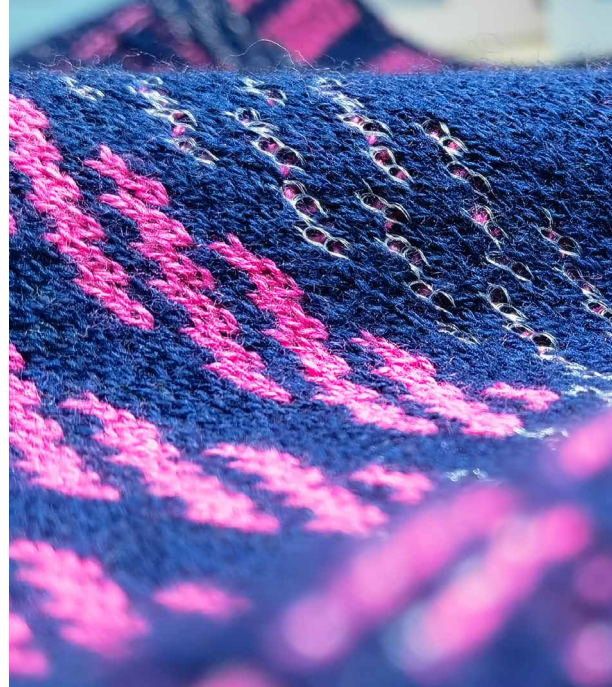
##### Admission:

Complimentary entrance for textile professional with textile business cards only.  
No admission to anyone under 18 years old.

**DO NOT FORGET YOUR BUSINESS CARD!**

We are now strict due to Covid 19 regulations & pre-registration is compulsory.

## THE VISION OF THE EXHIBITORS FOR THE S/S 2022 SEASON:



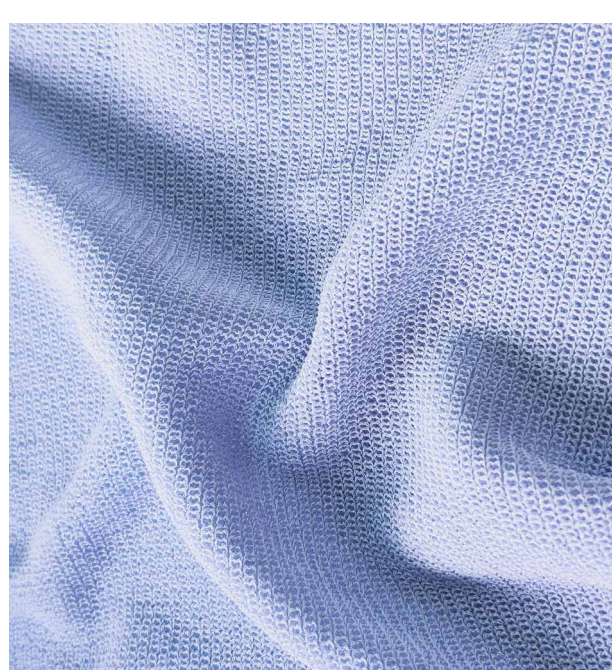
#### PINK THINK

*This is about passion, sweetness and gentleness. The sensitive female pink and violet shades give a sense of conquest and leave us breathless. This theme is about luxury silk blends with a lustrous appearance and smooth touch.*

#### PLAYFUL

*Creative expressions put the focus on modern and contemporary art where bold colours in different shades of violet, blue and yellow explode in all their emotional power. We use new functional fibres such as artemisia, menthe and pupa viscose spun with special technology to achieve antibacterial and therapeutic effects. Clothing made with these fibres has good breathability, strong moisture absorption and a cool feel.*

*HANGZHUO will continue to expand its development of domestic and foreign markets and will adjust to meet the different needs of different markets. To this end, it has started to differentiate development production and promotion, introducing new products every season to meet the markets' different needs and potential demands. HANGZHUO keeps innovating and believes in the prospects of a better future.*



*The 2022 SS Collection offers the following new core developments:*

- Integration of bright silk with optimized techniques resulting in yarns offering a natural layering visual effect with a sense of Italian style;
- Use of natural bamboo fibre with antibacterial, bacteriostatic, anti-odour and anti-ultraviolet properties, giving yarns a spring and summer feel;
- Use of acetate fibre and its outstanding deodorization performance, as well as a more balanced anti-fouling performance for dust, water and oil. The yarns are not easily contaminated and are easy to clean, fast-drying and very wearable.

*With 2020 behind us, we believe that the pandemic is now largely under control and the overall market in the industry is steadily recovering. The Chinese domestic market has become the strategic base for industrial development and there is currently a trend towards upgrading products with new technologies, adapting to market demand as a better approach. We have complete confidence in the whole textile industry.*

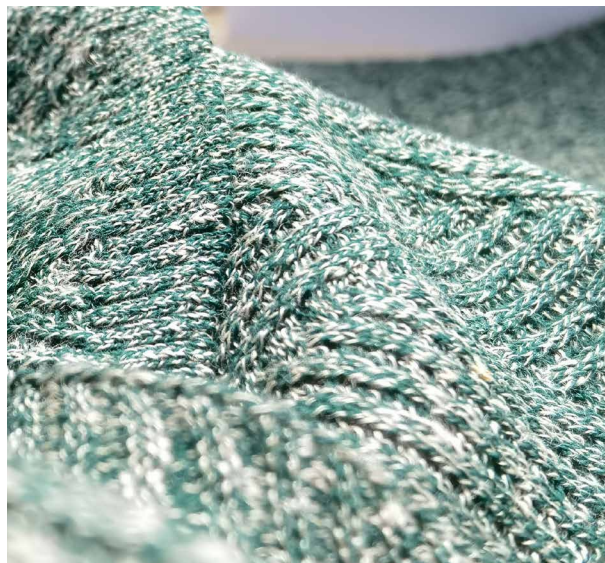
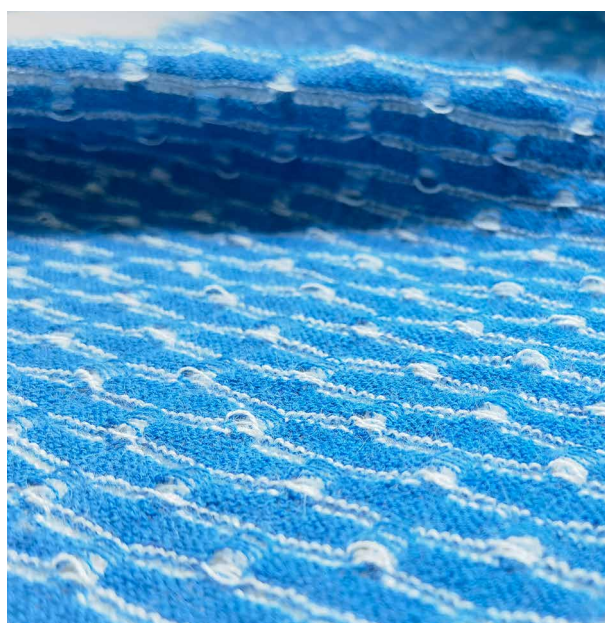
#### HANGZHUO: A LOOK AT THE SS 2022 FOUR-THEME COLLECTION

##### STRING GAME

*From white, grey, navy to black, this series of neutral tones brings a sense of science and technology and a mix of feminine elegance and masculine virility. It blends BCI cotton with the comfort of the Sorona fibre, and ECOVERO viscose adds a clear vein and a soft touch, perfect for spring knitting.*

##### BOTANICAL LIFE

*This theme reflects the vibrant green tones of nature, bud green, bright apple green and olive, bringing coolness on hot summer days. We keep the fresh, cool feel of linen, ramie and hemp and create linen blends with nylon, ECOVERO viscose and BCI cotton.*



#### QUAN LOOKS AT GREEN DEVELOPMENTS

*QUAN's evaluation of the market demand for environmentally-friendly products is leading the company to focus on green materials, green technology, green production and better product development. In addition, for customers who want fast delivery, QUAN discusses and studies their requirements with them to meet their need for quick response.*

*THE COMPANY's domestic sales and market areas are spread across the Shanghai, Jiangsu, Zhejiang and Pearl River Delta regions. QUAN is also preparing to develop foreign markets, adapting to customers' different needs and offering different services. They communicate closely with customers who require environmentally-friendly products.*



**Please visit our new website SPINEXPLORE, dedicated to trends and products:**

**WWW.SPINEXPLORE.COM**

**DUE TO COVID 19, PRE-REGISTRATIONS REQUIRED**

**WWW.SPINEXPO.COM**