

SPINEXPO™

IS AN EXHIBITION SPECIALISING IN FIBRES, YARNS AND KNITWEAR.



FIBRES | YARNS | KNITS | CIRCULAR KNITS | ACTIVEWEAR | SOCKS | HAND-KNITTING WOOLS

SPINEXPO™ invites you to preview during two days,

the A/W 2022/23 collections

of 30 internationally renowned spinning companies and knitwear manufacturers.

These simple presentations, based on the "Business to Business" model,

will be held in two intimate spaces that fully comply with the health regulations in force.

They will give suppliers and buyers the chance to meet face-to-face

in a professional setting, a far cry from virtual exchanges.

« Business to Business »

SPINEXPO™ PARIS

5-6 JULY 2021

"ATRIUM" SAINT GERMAIN

OPENING HOURS : 9.00 TO 18.00 H

SPINEXPO™ HONG KONG

28-29 JULY 2021

"THE SPACE" KOWLOON

OPENING HOURS : 10.00 TO 18.00 H

The trends and colour ranges of the Autumn/Winter 2022/2023 season are online and can be downloaded from our website

WWW.SPINEXPLORE.COM

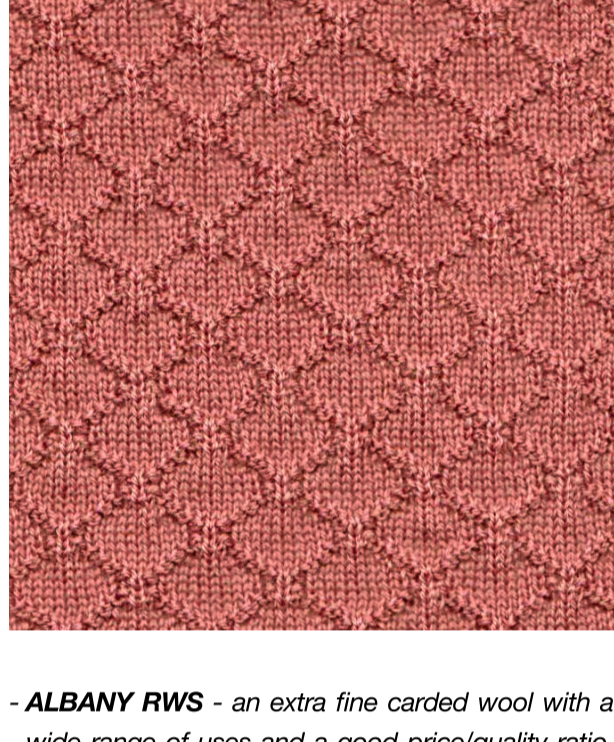
A paper version will be offered to all visiting companies.

These presentations will be complemented

by a simple presentation of the season's flagship products and a food court.

FOUR EXHIBITING COMPANIES AT PARIS AND HONG KONG

PRESENT COLLECTIONS THAT COMBINE EXCEPTIONAL QUALITY WITH RESPECT FOR THE ENVIRONMENT IN THE FULLEST SENSE OF THE WORD.



- **ALBANY RWS** - an extra fine carded wool with a wide range of uses and a good price/quality ratio. A permanent yarn in the Lanerossi collection for many years, which can be used as a single or multiple yarn in 7 or 5 gauge, for men or women. It is available in a wide range of dyed and melange colours from stock.

- **EYRE GRS** - an 80% wool and 20% polyamide yarn in which Lanerossi has been a leading specialist for 40 years, which combines comfort and a pleasant feel with great durability. It is available in a wide range of colours and blends from stock.

The concept of sustainability has been an integral part of Filivivi for a long time, meaning paying special attention to the production process and the way natural resources are used. All the processes carried out in the factories strictly respect the regulations that protect health and the environment, including the selection of the chemicals needed to make the products.

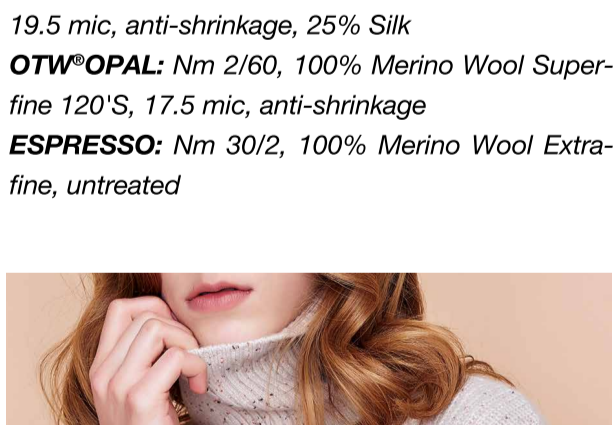


Our new collection for fall/winter features a selection of yarns for creating those garments : our classic yarns like Victoria Nm 2/30 & Nm 2/48 (100% Merino wool Extrafine, 19.5 mic, anti-shrinkage) and Brisbane Nm 2/60 (100% Merino wool Superfine, 17.5 mic, anti-shrinkage) with extended stock service as well as Espresso Nm2/30 & 2/48 (100% Merino wool, untreated) - natural brown, undyed and untreated yarn.

Sustainability and traceability plays important role in our daily life and also in our collection. We offer among others yarns created from RWS certified wool with stock service for selected colours (Victoria RWS Nm 2/30 and Nm2/48 (100% Merino wool Extrafine, 19.5 mic, anti-shrinkage))

This season we introduce also yarns made in the OTW® Technology – a new spinning technology patented by Suedwolle Group. The garments created with OTW® yarns have a clean and smooth surface, are durable and yet keep the soft and natural hand feel of Merino wool.

Description of the OTW yarns:
OTW® ONYX: Nm 2/30, 100% Merino Wool Extrafine, 19.5 mic, anti-shrinkage
OTW® JADE: Nm 2/48, 75% Merino Wool Extrafine, 19.5 mic, anti-shrinkage, 25% Silk
OTW® OPAL: Nm 2/60, 100% Merino Wool Superfine 120'S, 17.5 mic, anti-shrinkage
ESPRESSO: Nm 30/2, 100% Merino Wool Extrafine, untreated



HEMS
 HEMS Fine Knitwear Manufacturer was founded in 1993 in the city of Nanjing.

HEMS are specialized in Organic & Sustainable Woolen & Cashmere knitwear with GOTS, RWS, GRS and OCS. They are also a member of BSCI (Business Social Compliance Initiative).

With 900 employees and 120 sets of STOLL machines from 3G-16G. HEMS have been offering their fine knitwear garments to middle and high-end brands for Womenswear, Menswear and Kidswear.

They have established a strong R&D capability throughout the years and their Paris office team and in-house designers work closely with brands during each development session. They are trusted by their clients to bring them constantly new yarns/swatches/designs.

THE ITALIAN FILIVIVI GROUP

which includes Filivivi, Lanerossi and Folco spinning mills, focuses on eco-sustainable products and in particular presents 5 yarns certified GOTS (Global Organic Textile Standard), RWS (Responsible Wool Standard) and GRS (Global Recycle Standard).

These green products are:

- **AMICO BIO and AMICO ECO** - which combine softness, stability, elegance, quality and durability, for a very natural feel

- **WOOLCOT BIO** - a fine, light yarn that combines the two natural fibres par excellence: wool and cotton, both organically grown, a micro blend that gives the colours great depth.



The wools comply with Woolmark standards and the specific requirements of the OEKO Tex Standard 100. The acrylic fibre used in the wool/acrylic blends is sourced exclusively from Dralon, Germany, which has been paying particular attention to reducing its CO2 footprint for several decades, whose manufacturing process uses a very small amount of water (6lt/kg 80%, recycled afterwards), and whose waste is 90% recycled.

In addition, the production facility is equipped with a biological air treatment system that reduces energy consumption by 40%.

Filivivi has an active social policy that results in a very low turnover ratio, which speaks volumes about the appreciation of its employees.

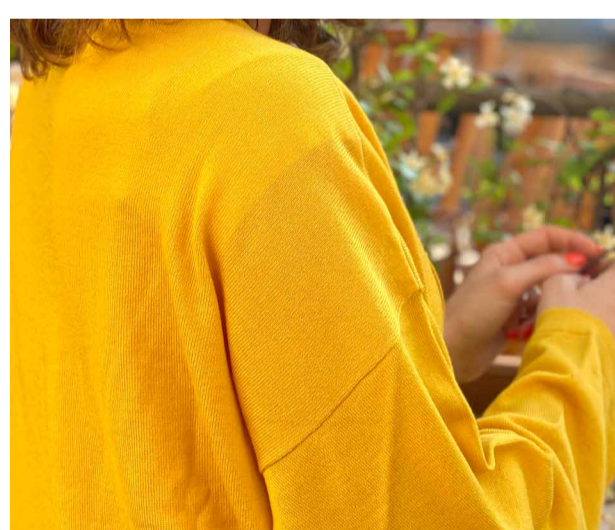
SÜDWOLLE GROUP

Südwolle Group from Germany is a global producer of worsted yarn in pure wool and wool blends for weaving, circular, flat knitting and technical applications. The company's collections Südwolle, Biella Yarn, Yarn in Motion, Richter, HF, Stöhr and Soey are focused on different segments of the global textile market. Located in the Nuremberg metropolitan area of Germany, Südwolle Group employs more than 3000 people globally with production facilities in Germany, Italy, Poland, Romania, Bulgaria, China and Vietnam.

Sustainability excellence in all its dimensions is a philosophy that drives the organization's operations, planning and investment actions.

www.suedwollegroup.com

In a world of speed, efficiency and results, we need garments to support us in movement, but also when we stop to slow down.



FLEXKNIT

is a knitwear manufacturer located in Madagascar.

Next to their knitting factories in Madagascar, they have their own dyeing mill and can offer short lead-times for piece-dyed yarns in basic qualities. Also, the twisting of yarns is possible, which opens huge possibilities. Flexknit produces garments and accessories for men, women, and kids from 3GG to 16GG. The delivery from Madagascar is duty free.

Customers have recourse to the company special service with a showroom in Dusseldorf where an international Design Team constantly develops new creative input and new collections. Flexknit provides lookbooks and access to a digital showroom.

For AW22, Flexknit is following sustainability and focus on natural materials certified by GOTS, OCS or RWS. After the big rise of loungewear in the past years, Flexknit believes in the comeback of dressing-up - yet in a comfortable manner. For menswear, they see great milano overshirts, polos and fine cashmere shirts. For womenswear, glamour of lurex yarns is going to meet the craftsmanship of hand embroideries and gets a more natural shine.



FOR MORE INFORMATION, PLEASE CONTACT:

Paris: Olivier Medman - olivierm@spinexpo.com - Mobile: (33) 6 61 53 60 00

Hong Kong: Keith Cheng - keith@spinexpo.com - Mobile : (852) 9307 7937 - (86) 176 7535 4087

PRE-REGISTER,
AND CONSULT THE LIST OF PARTICIPATING COMPANIES.

WWW.SPINEXPO.COM

Free entry for textile industry professionals on presentation of a business card.