



PARIS - HONG KONG - NEW YORK - SHANGHAI

# New dates

## SPINEXPO™ SHANGHAI

### 8-9 OCTOBER 2021

SHANGHAI WORLD EXPO CONVENTION & EXHIBITION CENTRE  
1099 GUOZHAN ROAD - PUDONG - SHANGHAI



FIBRES | YARNS | KNITS | CIRCULAR KNITS | ACTIVEWEAR | SOCKS | HAND-KNITTING WOOLS

**NEW OPENING HOURS: 8.30 AM TO 7.00 PM**

**NEW HEALTH REGULATIONS  
PLEASE CONSULT OUR WEBSITE**

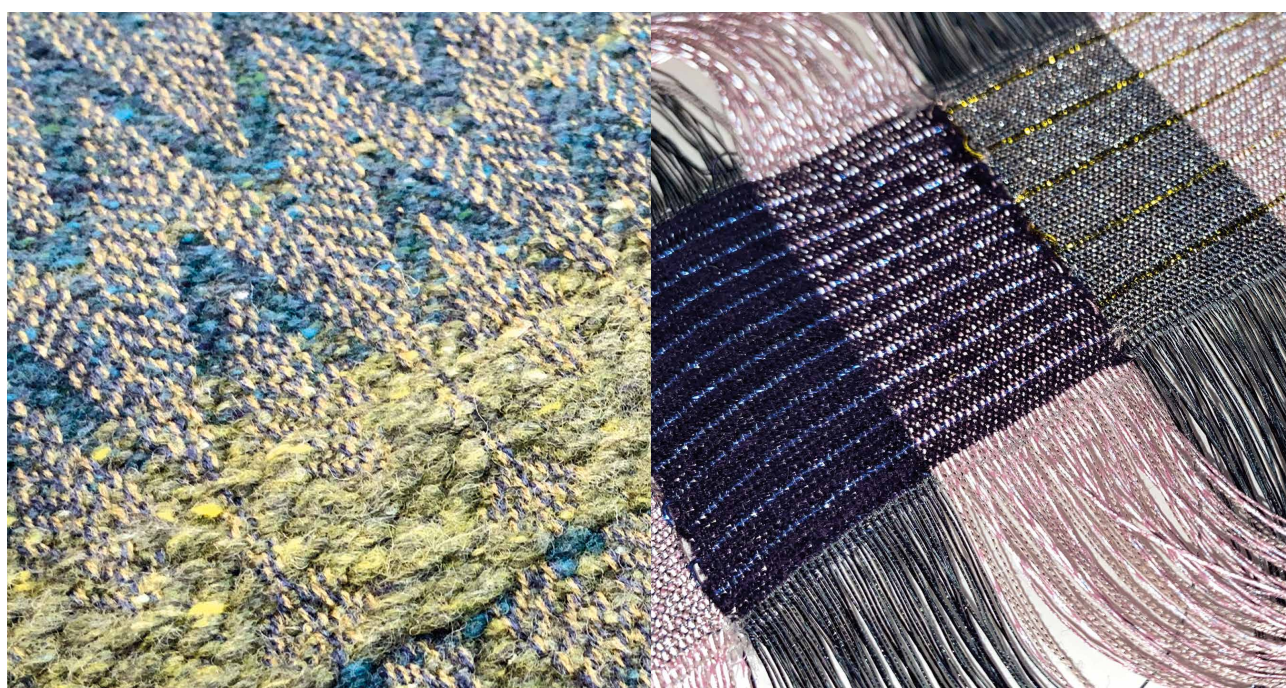
**[WWW.SPINEXPO.COM](http://WWW.SPINEXPO.COM)**

**PRE-REGISTRATION IS MANDATORY – NO ONSITE ENTRY**

## WEAVING IN THE SPOTLIGHT

SPINEXPO™ has specialised in developments in the sector of flat bed and circular knitting: this is its expertise.

However, yarn being at the origin of textile creation is fundamental for the elaboration of fabrics for clothing, home decoration, trimmings and many other creations.



Recently, visitors to SPINEXPO™ have been diversifying and many have indicated their interest in discovering developments in the field of weaving, in parallel with developments in knitwear.

We had been integrating weaving developments in our trend areas alongside knitwear developments in previous sessions, but for some visitors, it was difficult to differentiate between knitwear and weaving developments.



In response to the growing interest of visitors, we have created a new trend area, called "Warp & Weft", an area specialising in developments in this sector, which aims to be a source of inspiration different from the areas dedicated to knitwear. This area also responds to the interest of some of our exhibitors, who have integrated this sector into their collections.

A pair of designers specialised in this sector will present their interpretation of the SPINEXPO™ AW2022-23 trends using the collections of our exhibitors' yarns.

**WE LOOK FORWARD TO SEEING YOU THERE!**

**Visit us at [WWW.SPINEXPO.COM](http://WWW.SPINEXPO.COM)**  
**For Trends : [WWW.SPINEXPLORE.COM](http://WWW.SPINEXPLORE.COM)**

**PRE-REGISTRATION IS MANDATORY – NO ONSITE ENTRY**