



PARIS - HONG KONG - NEW YORK - SHANGHAI

# Don't forget

NEW DATES

## SPINEXPO™ SHANGHAI

### 8-9 OCTOBER 2021

SHANGHAI WORLD EXPO CONVENTION & EXHIBITION CENTRE

1099 GUOZHAN ROAD - PUDONG - SHANGHAI



FIBRES | YARNS | KNITS | CIRCULAR KNITS | ACTIVEWEAR | SOCKS | HAND-KNITTING WOOLS

**NEW OPENING HOURS: 8.30 AM TO 7.00 PM**

**NEW HEALTH REGULATIONS**

**PLEASE CONSULT OUR WEBSITE**

**[WWW.SPINEXPO.COM](http://WWW.SPINEXPO.COM)**

**PRE-REGISTRATION IS MANDATORY – NO ONSITE ENTRY**

## Focus on exhibitors' products REGAL

For its next collection, Regal has studied the evolution of its customers' demand and has reinforced its stock service offer

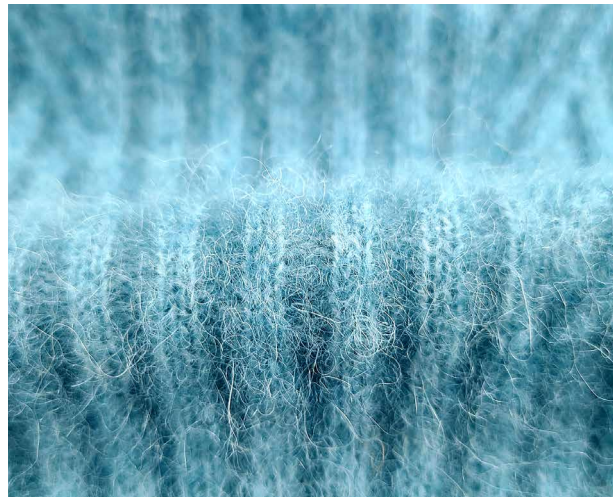
*Brands are now fragmenting their collections more and more, renewing their offer by diversifying their colours, modifying details or adding new developments during the season.*

*Spinners must therefore adapt by diversifying their collections during the season, by proposing new developments and new colours, and by accepting smaller volumes per product type.*

*E-commerce has accentuated this trend, forcing suppliers to be efficient in short circuits.*

*The demand for natural fibre yarns is increasing: alpaca, mohair and cashmere are sought-after fibres because they allow the production of yarns that are pleasant to the touch and in high demand; from fine to medium gauges, a spongy touch that retains heat is therefore an important element of the new collection of the spinning mill.*

### SOME OF THE PRODUCTS IN THE NEW COLLECTION:



#### BARON II

*A yarn made out of a rich level of natural animal fiber, alpaca and wool, spun by Italian machinery. It has soft and bulky hand feel and is good for warmth keeping with good sponginess.*

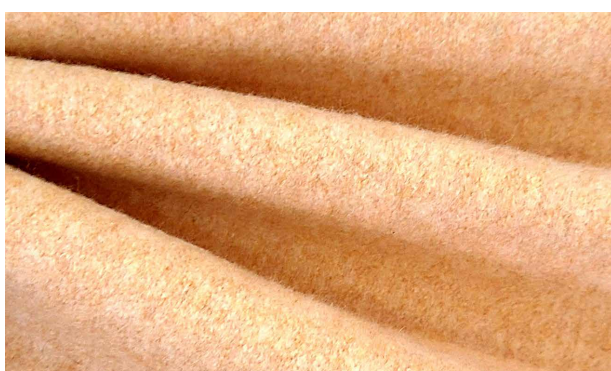
- Stock service supported
- Soft hand feel



#### TOTORO

*The natural soft cotton content guarantees no irritation to skin contact. It is a natural eco-friendly and warm option for knitwear development.*

- Stock service supported
- Good value: a high level of cotton content close to cashmere hand feel.



#### ZEUS

*An ultrafine merino wool fiber with a unique fiber construction that enables sufficient sponginess. A delicate fabric option for luxury knitwear in thin and light characteristics.*

- Stock service supported
- Delicate soft hand feel with good warmth and moisture control characteristics



#### MICHELL

*A delicate natural fabric yarn spun with wool and silk for a super soft hand feel and the natural shininess of silk fiber, resulting in light weight and excellent warmth retention performance.*

- Stock service supported



#### CASERA

*A luxury fabric yarn spun from a blend of precious cashmere fiber and wool. It has a soft and smooth hand feel with sufficient fluffiness, for a knitwear that is good in warmth keeping and elasticity, with reliable moisture penetration function.*

- Stock service supported
- Luxury substitution for the pure cashmere yarn with good value

#### ISSAC

*This is a classic soft and light fabric spun by mohair and wool fibers.*

- Stock service supported
- Soft and delicate wool hand feel



**WE LOOK FORWARD TO SEEING YOU THERE.**

**Visit us at [WWW.SPINEXPO.COM](http://WWW.SPINEXPO.COM)**

**For Trends : [WWW.SPINEXPLORE.COM](http://WWW.SPINEXPLORE.COM)**

**PRE-REGISTRATION IS MANDATORY – NO ONSITE ENTRY**