

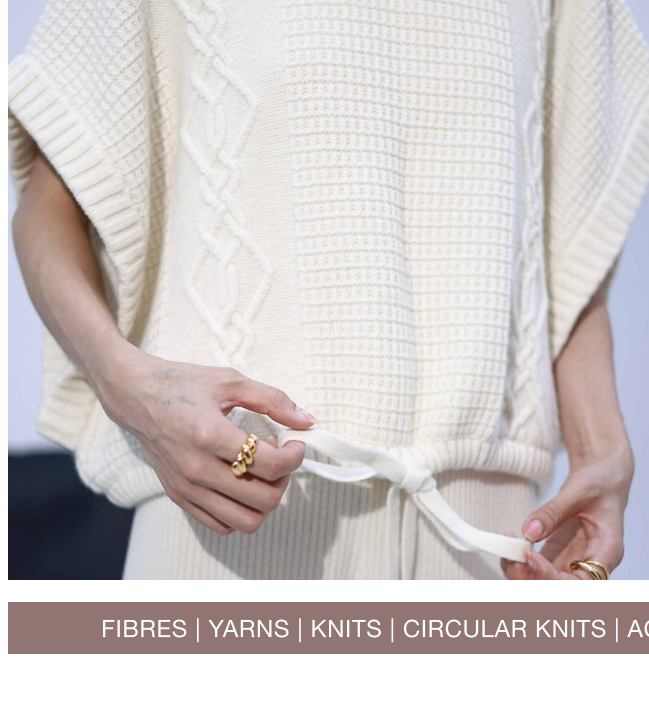


HONG KONG - LONDON - NEW YORK - PARIS - SHANGHAI - SHENZHEN

Save the dates

SPINEXPO™

THE PRIMARY EXHIBITION FOR YARNS & KNITWEAR



FIBRES | YARNS | KNITS | CIRCULAR KNITS | ACTIVEWEAR | SOCKS | HAND-KNITTING WOOLS

HONG KONG

12-13 JANUARY 2022

THE SPACE

2F, D2, PLACE ONE - 9 CHEUNG YEE STREET - LAI CHI KOK - KOWLOON

OPENING HOURS - 10.00 AM / 6.00 PM

LONDON

8-9 FEBRUARY 2022

THE OLD TRUMAN BREWERY

91 BRICK LANE, LONDON E1 6QR

OPENING HOURS - 9.00 AM / 6.00 PM

SPINEXPO B2B Hong Kong and London offer seasonal presentations of the Spring/Summer 2023 yarn and knitwear collections.

These presentations aim to bring together a selection of spinning mills, fiber promoters, and knitwear manufacturers to offer buyers the opportunity to discover the latest novelties and prepare their own collections in an intimate setting, conducive to exchanges.

Hong Kong is aimed at local brands and tradings offices, while London is aimed at European buyers who wish to travel from other European countries.

We introduce three of our exhibitors' new products:



The 23SS collection consists mainly of:

- A premium pure cashmere collection: Premium cashmere, with state-of-the-art craftsmanship and exquisite detailing, providing extraordinary quality and an excellent delicate feel.
- Premium Cashmere Blend Collection: It has both the soft, waxy feel of cashmere and the fine, smooth texture of wool. The two are perfectly integrated, presenting a unique sense of quality.
- Undyed collection: Undyed raw cashmere, simple, contains the original high-level texture, low-carbon and environmentally friendly, and the color is as gentle as jade.
- Super fine count collection: 100% fine count cashmere, exquisite and luxurious.
- Recycled Cashmere Collection: Combine the theme of environmental protection with the circular economy to create a green cashmere with lasting significance.
- PVA Collection: A soft yarn blended with PVA and cashmere to provide a second layer of skin contact.

M.ORO continues to pursue a sustainable approach to cashmere.

M.ORO has grown organic pastures on 1416.74 acres in Otog Banner, Ordos, Inner Mongolia, based on US and EU organic farming regulations. The cashmere goats are raised in a natural environment that respects the ecology, and has obtained CU (CONTROL UNION) certification for its organic cashmere.

At the same time, M'Oro has introduced state-of-the-art spinning equipment from Italy to give the cashmere the most natural colour through a special dyeing process and professional finishing.

Cashmere Traceable System makes branded products traceable and allows for a fully transparent cashmere sourcing and production process, and the protection of the rare and excellent quality of cashmere as it was originally produced by a specific breed of goat. In close cooperation with the SFA and the GCS, the source can be traced, the flow can be traced, information can be requested and accountability can be guaranteed, thus enabling the green and sustainable development of the industrial chain.



LUGANG

Jiangsu Lugang Science & Technology Co. is a comprehensive spinning mill with an integrated spinning production system consisting of worsted, semi-combed, woolen and fancy yarns. It has four yarn brands, including: SERENATA (a collection of straight yarns in precious natural fibres), ARMONIA (a collection of luxury fancy yarns), COMPWOOL (a collection of compact spinning) and REGAL (a good value essential commodity yarn). Innovation is the company's strength with its in-house development team. The company also strives to be a socially responsible enterprise. Implementing sustainability in fibre selection and daily operations is one of the company's key missions.



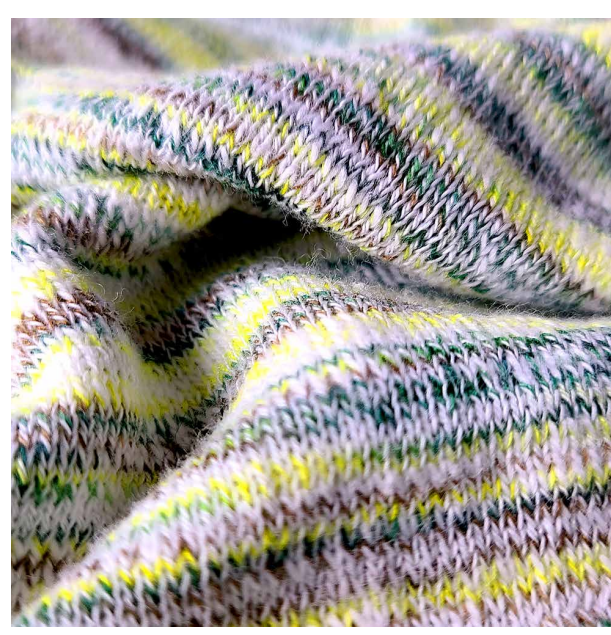
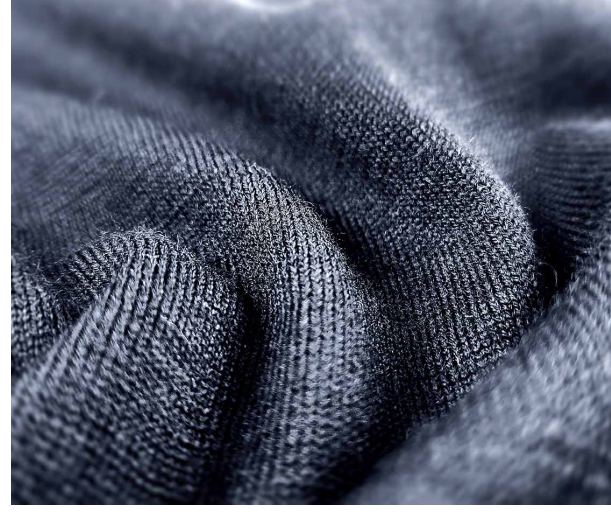
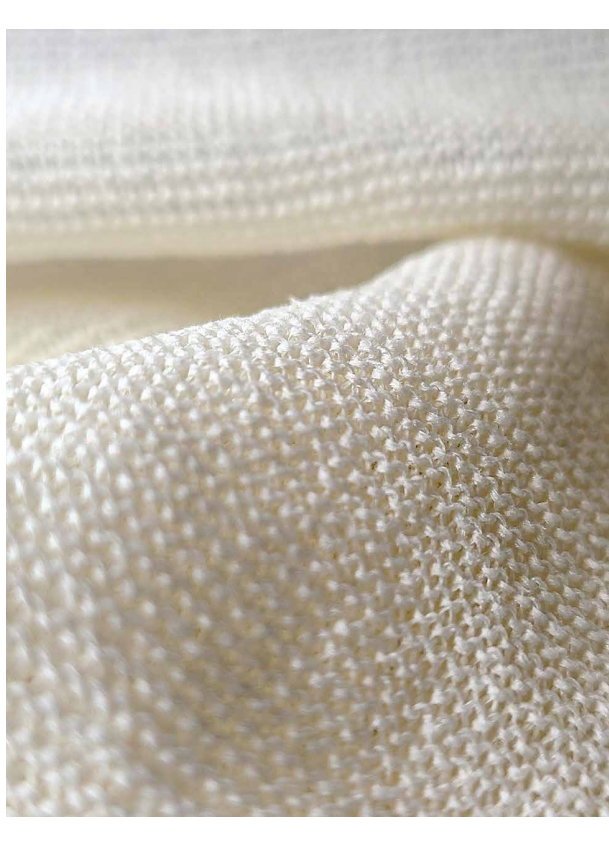
They have prepared several key items for the next SS 2023.

Excalibur: 3/68 Nm 70% acetate 30% wool
It is spun into a fine yarn, with a significant amount of acetate fibres mixed in with the wool. It has a shiny, smooth appearance and good air permeability suitable for elegant and comfortable garments.

Raoul: 1/2.8 Nm 53% recycled cotton 47% recycled polyester
Adopting sustainable design, they have blended recycled cotton and recycled polyester to have developed this multi-coloured product. It is a fashionable yarn with a dry feel to meet diverse design objectives.

Erik: 2/48 Nm 60% Livaeco viscose 20% nylon 30% Sorona
This yarn is composed of DuPont's SORONA fibre and the durable viscose fibre LIVAECO. Thanks to special core-spinning techniques, it has achieved a voluminous and comfortable feel with good elasticity recovery. A good potential option for the fast fashion trend.

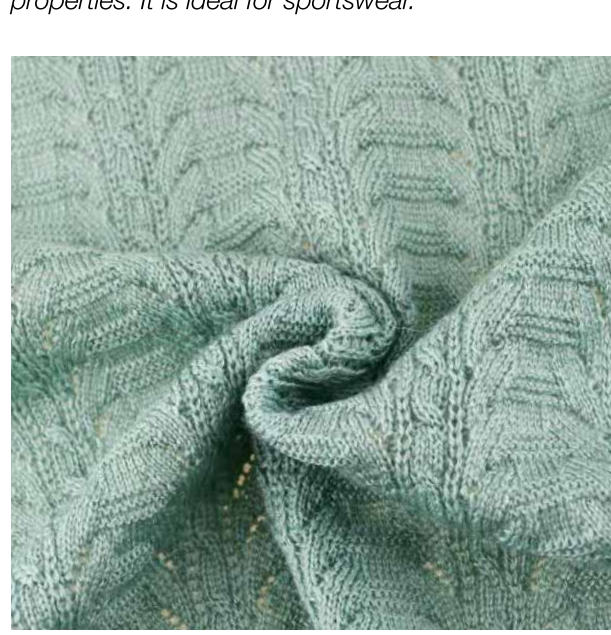
Christopher: 1/35 Nm 60% paper 40% polyester recycle
This new development uses the ultra-fine paper raw material with a subsequent treatment to provide a super dry, linen-like feel. It has good moisture absorption and ventilation properties, while being ultra-lightweight.



Aurora: 1/17.5 Nm 35% recycled polyester 65% cotton
The multi-coloured effect of space dye and the fuzzy slub texture are the core values of this article. It gives a brilliant colour appearance, rich texture and dry hand feel.

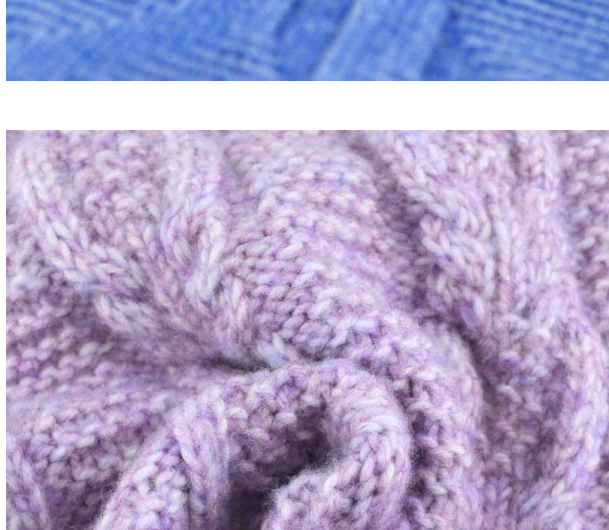
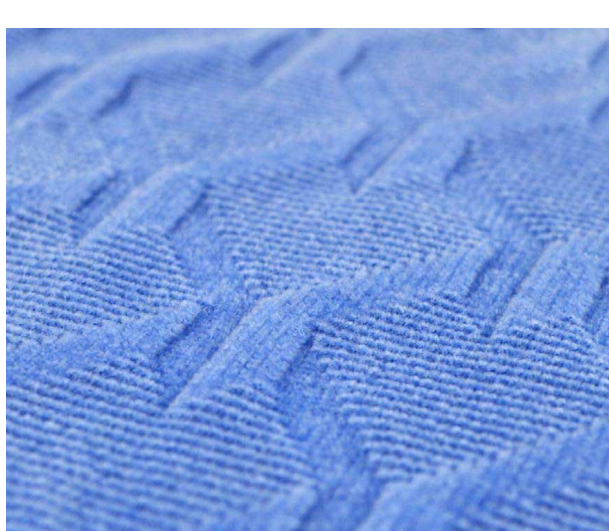
Twilight: 1/24 Nm 65% acetate 35% recycle nylon
This yarn has blended Eastman's eco-friendly acetate fibre with recycled nylon to create a 100% sustainable product. The yarn is tight and elastic with good fullness and breathability.

Mysterious: 2/48 Nm 60% Regal wool 40% Sorona Homo
Jiangsu Lugang is very proud to present this "Mysterious" yarn, which is spun with REGAL WOOL fibre, an exclusive technique invented by REGAL, by blending it with SORONA HOMO performance fibre. It has a silk-like sheen, with good elasticity and anti-pilling properties. It is ideal for sportswear.



YUSHENG

Wuxi Yusheng Yarn Co. (Wuxi Huasheng Special Yarn Factory) is an international supplier of special yarns, employing over 200 people in research and production. In response to changing production requirements, Yusheng is constantly innovating equipment to make production more convenient and revolutionary in terms of product shape to meet the unique needs of external customers. As a result, the products have always maintained a competitive edge in the market. At the same time, the mill continues to develop new types of hand-knitted yarns (tufted fleece) that are popular in Europe, North America, Japan and Southeast Asia.



Theme for the next season is inspired by flowers, sky, sun and nature in general, and introduces a series of products in a variety of colors.

Environmental protection concept: use of recyclable and renewable raw materials.

Yusheng Yarn's mission is to always take responsibility to meet the needs of the market and consumers as much as possible, to continue to provide customers with more exciting and innovative novelty yarn products, and to strive to become an excellent international novelty yarn supplier.

What they're offering:

- 26 NM/2 Recycled Polyester Yarn: 100% RE-P (recycled polyester)
Breathable, lightweight, and more environmentally friendly using recycled materials
- 12.5 NM silk velvet: 100% P (polyester)
Soft touch, light weight, and various colors
- 3.8 NM sunny nylon spray wool yarn: 70% P (polyester) 20% A (acrylic) 10% N (nylon)
Soft and fluffy; lightweight; and changeable in composition, color, and style
- 18 NM polyester chenille: 100% P (polyester)
Its advantages include resistance to pilling, ease of shedding, good flexibility, excellent anti-crease property, water absorption property, abrasion and corrosion resistance.
- 12.5 NM full nylon lash yarn: 100% P (polyester)
Suitable for furniture series products, soft and skin-friendly.

WE HOPE TO SEE MANY OF YOU THERE.

A SMALL "CAFETERIA" AREA IS AVAILABLE FOR VISITORS.

DON'T FORGET SPINEXPO™ SHANGHAI

22-23-24 March 2022

World Expo Convention & Exhibition

Trends and products www.spinexplore.com

WWW.SPINEXPO.COM