



HONG KONG - LONDON - NEW YORK - PARIS - SHANGHAI - SHENZHEN

# Change of dates

## SPINEXPO™



FIBRES | YARNS | KNITS | CIRCULAR KNITS | ACTIVEWEAR | SOCKS | HAND-KNITTING WOOLS

## HONG KONG 23-24 FEBRUARY 2022

THE SPACE

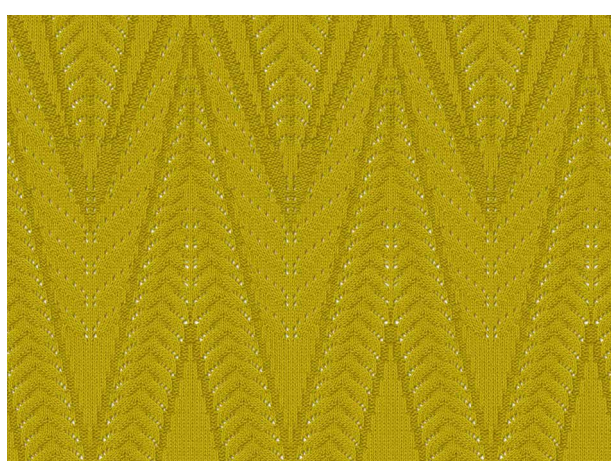
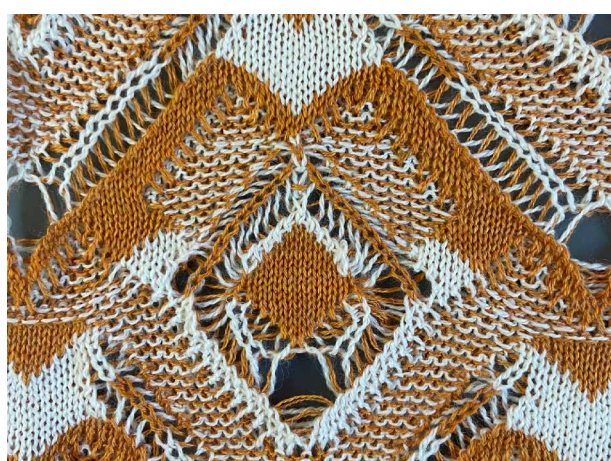
2F, D2, PLACE ONE - 9 CHEUNG YEE STREET - LAI CHI KOK - KOWLOON

OPENING HOURS - 10.00 AM / 6.00 PM

SPINEXPO B2B Hong Kong offer seasonal presentations of the Spring/Summer 2023 yarn and knitwear collections.

This presentation aim to bring together a selection of spinning mills, fiber promoters, and knitwear manufacturers to offer buyers the opportunity to discover the latest novelties and prepare their own collections in an intimate setting, conducive to exchanges.

### Our exhibitors' new products:



**CHELSEA:** Nm2/60-Nm3/60, 30% Silk, 70% Lyocell  
This yarn is blended with 70% lyocell (Tencel) & 30% silk. The knitted fabric has a flat surface with a clear, exquisite, and delicate texture. The hand feels soft and comfortable, and it can be worn next to the skin. At the same time, the fabric has a bright colour presentation and has a good drape

**FLORA:** Nm2/48, 55% Extrafine Merino Wool, 45% Cotton  
"Selected 55% ultrafine merino shrink-proof wool (19.5MIC) and 45% cotton blend. The fabric is combined with the characteristics of two natural fibers of wool and cotton, which have a smooth surface, clear texture, and soft handle. The garment also has good moisture absorption and breathability and can meet the Woolmark machine washable standard."

**CROSS+:** Nm2/28-Nm2/36-Nm2/48, 55% Extrafine Merino Wool, 45% Linen  
55% ultrafine merino shrink-proof wool (19.5MIC) and 45% linen blended yarn. The knitted fabric has a crisp and dry handle, which could achieve the needs of spring and summer clothing. It also offers a rough style with a good drape and breathability. The product meets the Woolmark machine washable standard."



#### XINAO

Being a pioneer textile enterprise to join the China Textile Industry Federation LCA (product life cycle) evaluation project and the "Climate Innovation 2030 Action", Xinao is the first to carry out carbon footprint assessment. Xinao will spare no effort to promote the industrial innovation, lead a green consumption trend and create a sustainable textile industry chain.

**Xinao will present 5 key products for the upcoming season:**

**MAYFAIR:** Nm2/52-Nm2/72, 70% Ultrafine Merino Wool, 10% Cashmere, 20% Silk

Selected 70% ultrafine merino shrink-proof wool (16.5MIC), 20% silk, and 10% cashmere blended yarn. It has a clean and smooth yarn appearance with bright colours. The surface of the fabric is clean and flat with a delicate and fine texture. A soft and comfortable handle offers excellent skin-friendliness and garments can be worn next to the skin.



**VEGAS:** Nm2/48, 22% Lyocell, 22% Low Pilling Acrylic, 42% Viscose, 14% Lamé  
"Blended with selected 22% lyocell, 22% low-pilling acrylic, 42% viscose and 14% Lamé, the fabric knitted with this yarn has a flat and clean surface. The texture is exquisite, fine, and clear, with the unique glitter of Lamé. It can meet the Woolmark machine washable standard."

Zhejiang Xinao Textiles Inc. has been focusing on the development and production of worsted wool yarn since 1991, and has grown to become one of the world's leading suppliers of high-quality worsted machine knitting yarn for flatbed, circular knitting, and socks. In these 30 years, Xinao has been adhering to the concept of sustainable development and has completed all-rounded development on industrial chain expansion and global market deployment. Xinao's products cover different fields such as flat knitting machines, circular knitting machines, outdoor sports, home textiles, and home furnishings. The products have passed GRS, GOTS, Bluesign, and other sustainable product certifications to create a transparent and reliable supply chain. With the proposal of the "30-60 target" in 2021, Xinao has actively implemented carbon emission reduction work.

PRE-REGISTRATION IS NOW OPEN !

Trends and products [www.spinexplore.com](http://www.spinexplore.com)

[WWW.SPINEXPO.COM](http://WWW.SPINEXPO.COM)