



HONG KONG - PARIS - SHANGHAI - SHENZHEN

# Save the dates

## SPINEXPO™ NEW YORK

### 26-27 JULY 2022

THE GALLERY - METROPOLITAN PAVILION

MANHATTAN - NEW YORK

Opening hours: 9.00 am to 6.00 pm



FIBRES | YARNS | KNITS | CIRCULAR KNITS | ACTIVEWEAR | SOCKS | HAND-KNITTING WOOLS

SPINEXPO™ organizes in New York a presentation of spinning and knitwear AW 23-24 collections through a simple presentation of the exhibitors' agents or export managers. This "Business to Business" presentation gather 25 exhibiting companies during two days

**An identical presentation will be held in Paris and in Hong Kong**

## PARIS B2B Presentation

### 7-8 JULY 2022

ATRIUM ST GERMAIN

76 RUE DES SAINTS-PÈRES - 75007 PARIS

Opening hours: 9.00 am to 6.00 pm

## HONG KONG B2B Presentation

### 20-21 JULY 2022

THE SPACE

2/F, D2 PLACE ONE - 9 CHEUNG YEE STREET - LAI CHI KOK, KOWLOON

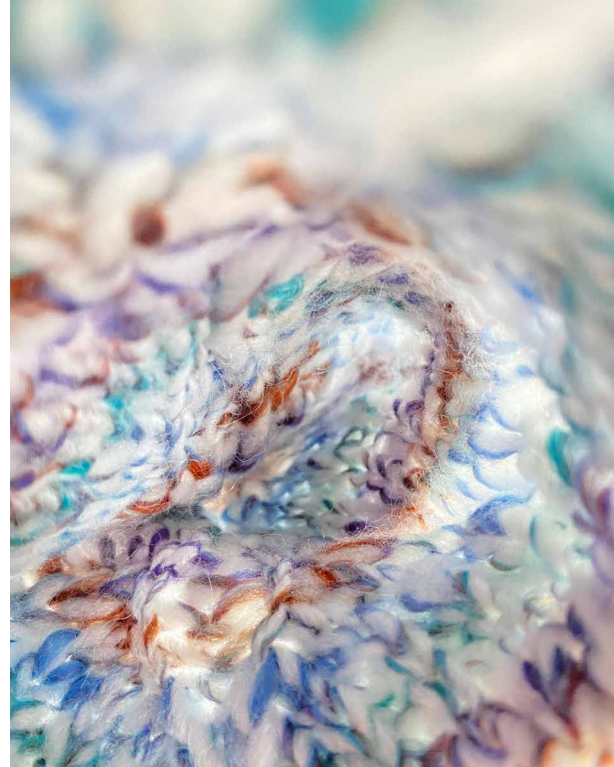
Opening hours: 10.00 am to 6.00 pm

**Pre-registration and list of exhibiting companies:**

[www.spinexpo.com](http://www.spinexpo.com)

Free entry to any company in the textile sector upon presentation of a business card.

## SUSTAINABLE COLLECTIONS IN FW23 SEASON



### GTIG HUBO INDUSTRIAL CO., LTD.

Established in 1992, GTIG HUBO INDUSTRIAL CO., LTD. ("HUBO") is a leading member of JIANGSU GUOTAI INTERNATIONAL GROUP CO., LTD. As the worldwide leading yarn supplier today, HUBO has been ranked N° 1 amongst "The China Sweater Yarn Export Enterprises" for years. Guided by a commitment to "Creativity & Quality" the international design teams deliver the most innovative products and fashion inspirations to the global clients. Complying to the trend of post-epidemic era, HUBO bring 2 key sustainable collections in FW23 season.

**1. WOOL SERIES BY HUBO:** Using state-of-the-art spinning technology from France and Germany, HUBO have created a wool collection with a delicate feel, ultra-fine texture, excellent pilling resistance and unrestricted softness. The Merino wool used is a fully traceable and strictly controlled extra-fine wool from fibre, spinning to dyeing. A series that is RWS certified, and has been awarded the Woolmark license.

**2. SUSTAINABLE COLLECTION:** For the upcoming FW 23, HUBO continues to be committed to the development of sustainable fibres that are recyclable, degradable and bio-based, using innovative production technologies that save energy and reduce emissions. HUBO is committed to developing more sustainable yarns while reducing the carbon footprint.

#### MYW23015

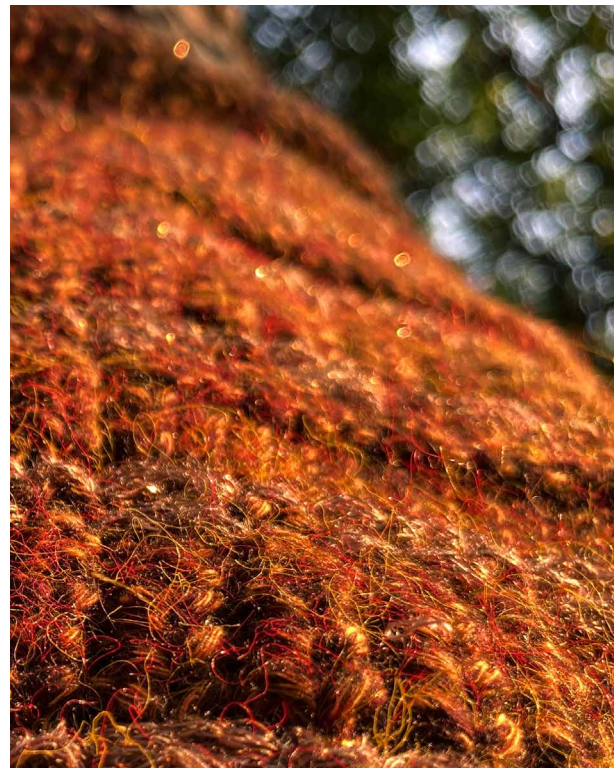
1/30 NM, 19% Alpaca, 54% RWS Extrafine Merino Wool, 27% Nylon

Using imported Italian spinning equipment, HUBO chose high quality baby alpaca fiber and RWS wool (fully traceable) to create an extrafine brushed yarn, that has a natural & gorgeous luster, soft handle and cloud like lightness.

#### HPW23046A&HPW23046B

3/8 NM & 1/4.3 NM, 82% Acrylic, 13% PBT, 5% Wool & 100% BCI Cotton

A collision and fusion of two completely different yarn types creates a textural and rustic appearance that has interesting surface and 3D effect - simple yet modern. This yarn looks great in basic jersey through to cables and tucks, creating endless knitting possibilities.



#### HNW23017

1/2.7 NM, 74% Polyana® Polyester, 22% Nylon, 4% Polyester

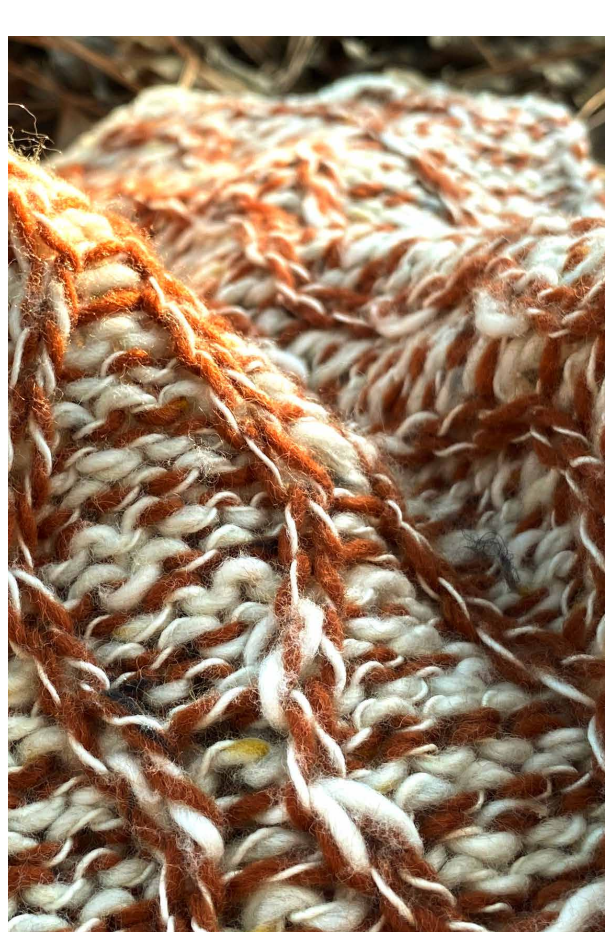
Using a new sustainable fiber of Polyana® Polyester, which is a green substitution of Acrylic. This yarn is puffy and textural, with the ability to dye vibrant, rich and joyous colours.

#### HNW23046

2/48 NM, 40% InResST® Recycled Nylon, 30% Recycled Wool, 30% ReVisco™ Viscose  
Made with 100% recycled fibers, this yarn has an excellent performance, is light & warm, soft & comfortable, stretchy & retains great shape.

#### HNW23047

2/36 NM, 55% BCI Cotton, 45% CELYS™ Polyester  
A combination of biodegradable CELYS™ Polyester and natural fibers of cotton, mixes the best of both yarn properties with a sustainable concept, it is a perfect staple for core sweater styles.



#### MYW23017

1/14 NM, 25% Alpaca, 26% RWS Merino wool, 46% Nylon, 3% Spandex

Premium alpaca blended with traceable RWS wool fibre creates an airy, fluffy, elastic and super soft yarn that is the best choice for a stylish knit.

#### MYW23022

1/1.5 NM, 70% Acrylic, 30% RWS Wool

Integrating advanced Italian spinning equipment and traceable responsible wool fiber along with a space dyed colour effect, creates a strong and unique high end look with a stunning visual impact.

#### MYW23003

2/16NM, 80% Extrafine Merino Wool, 20% Recycled Nylon

Sustainable recycled nylon blended with a high percentage of extrafine merino wool, is super comfortable, gentle, and compact, along with being sustainable. A classic neps which is premium, tasteful and on trend.



Don't forget

## SPINEXPO SHANGHAI

### 30-31 AUGUST / 1<sup>ST</sup> SEPT. 2022

SHANGHAI WORLD EXPO & CONVENTION CENTRE

PUDONG - SHANGHAI

**PARIS CONTACTS:** Olivier Medman, [olivierm@spinexpo.com](mailto:olivierm@spinexpo.com)

Vincent Tafanelli, [v.tafanelli@spinexpo.com](mailto:v.tafanelli@spinexpo.com)

**HONG KONG CONTACT:** Keith Cheng, [keith@spinexpo.com](mailto:keith@spinexpo.com)

**NEW YORK CONTACTS:** Wanda Qin, [wanda@spinexpo.com](mailto:wanda@spinexpo.com)

Steven Oo, [stevenoo@qq.com](mailto:stevenoo@qq.com)

**PRE-REGISTER:**

[WWW.SPINEXPO.COM](http://WWW.SPINEXPO.COM)