



HONG KONG - NEW YORK - PARIS - SHANGHAI - SHENZHEN

# SAVE THE DATES! HANGZHOU

## SPINEXPO™ SHANGHAI

IS BEING HELD

IN HANGZHOU INTERNATIONAL EXPO CENTRE

# 15-16-17 AUGUST 2022



FIBRES | YARNS | KNITS | CIRCULAR KNITS | ACTIVEWEAR | SOCKS | HAND-KNITTING WOOLS

The impossibility to organise the next edition of SPINEXPO in SHANGHAI, due to the new wave of Covid 19, forces us to change the location and dates for the 39<sup>th</sup> edition.

145 exhibitors will present their knitwear and yarn collections for the AW 23-24 season

A trend zone presenting the colour charts and developments of the season is located at the entrance of the show.

SPINEXPO™ is a professional event specialising in the yarn and knitwear textile sectors, with applications in the areas of ready-to-wear, knitted accessories, weaving and active wear. With events on three continents, it showcases an exceptional selection of spinners, knitwear manufacturers and studios offering a “one-stop-shop” solution, from design to production, for small volumes and industrial-scale production.

**Free entrance for trade visitors and media with business cards only.**

**DUE TO COVID 19, ALL VISITORS NEED  
TO HAVE PRE-REGISTERED: [WWW.SPINEXPO.COM](http://WWW.SPINEXPO.COM)  
AND RECEIVED A BAR CODE.**

**Do not forget ID and your business card!**

SPINEXPO HANGZHOU PLAYS ON BOTH SEASONS 2023



### YANA

is a leading manufacturer of high-end spring and summer yarns.

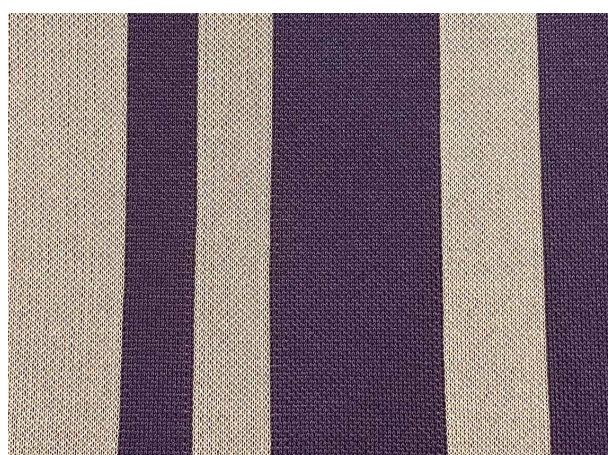
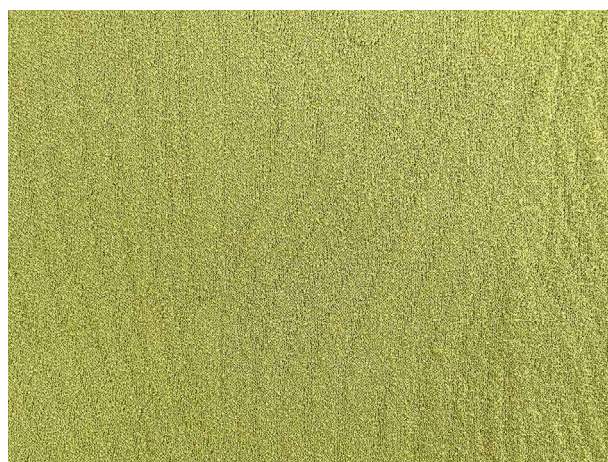
The company has a leading advantage in the application of high-elastic yarn, with an annual output of more than 2,000 tons of high-end spring and summer yarn such as Elite.

Yana aims to be the most professional S/S yarn enterprises through continuous innovation;

However, Yana also dedicate its skill to the development of A/W products and focus more on the application of natural materials with "back to nature" as the inspiration for development. Mulberry silk and high-quality cotton are used as the main body of development, being more in line with the needs of modern wear.

### Products on display for this session:

- **Aphro** (3/83NM, 5% Cashmere, 10% Silk, 70% Tencel, 15% Cotton) combines cashmere from the high latitudes with silk from the southern water towns, complemented by Tencel, to create a warm, soft texture suitable for spring.
- **Asana** (3/68NM, 6% Silk, 58% Tencel, 30% Viscose, 6% Cotton) series uses Tencel and natural skin-friendly cotton blended raw materials combined with MCFF and high-quality long fiber silk to create a beautiful and full luster texture.
- **Maple** (1/40NM, 80% Cotton, 20% Polyamide) is a special yarn made of double ply strong twist cotton and fine denier nylon under multiple coating process. This creates a smooth finish and rich yarn texture. The yarn feels dry, broad in style and light in texture. Maple can also be interwoven with other yarns for a more ornate effect, making it a very recognizable material for casual styles.
- **Artes** (1/42NM, 8% Silk, 72% Tencel, 20% Polyamide) series is a perfect collision of high-quality mulberry silk and Tencel. It is compatible with the luster of silk and the softness of Tencel. The coating process of polyamide also gives it durability.
- **Fluffy** (1/26NM, 75% Cotton, 25% Polyamide) is a textured yarn made of high-quality cotton and polyamide fiber with special fancy twisting process. The special structure produces a clean and simple yarn, revealing the flying circles, which is a very lively expression in mostly plain S/S knitting.



### DON'T FORGET

## SPINEXPO™ SHENZHEN SPINCLUB

WILL TAKE PLACE

AT THE GRAND HYATT HOTEL, GRAND BALLROOM,

# 20-21 SEPTEMBER 2022

**PRE-REGISTER:**

[WWW.SPINEXPO.COM](http://WWW.SPINEXPO.COM)