

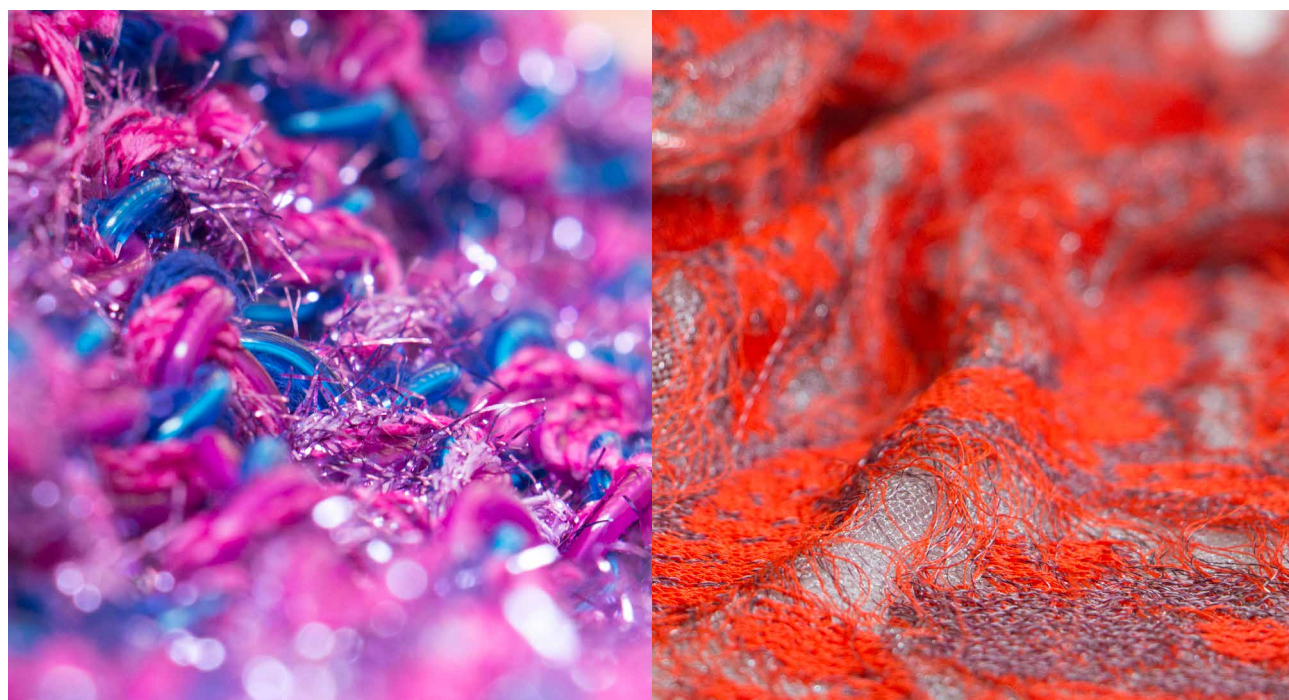


HONG KONG - NEW YORK - PARIS - SHANGHAI - SHENZHEN

SAVE THE DATES! SPINEXPO™ SHANGHAI HANGZHOU

CHANGE OF VENUE
HANGZHOU INTERNATIONAL EXPO CENTRE

15-16-17 AUGUST 2022



FIBRES | YARNS | KNITS | CIRCULAR KNITS | ACTIVEWEAR | SOCKS | HAND-KNITTING WOOLS

9.00 am to 6.00 pm – 15-16 August 2022
9.00 am to 3.00 pm – 17 August 2022
Open to textile trade visitors with business card.

Please check the health regulations before entering the exhibition

VISIT US AT WWW.SPINEXPO.COM

**Pre-register and view the extensive list of exhibitors
and show specific information.**

PRE-REGISTRATION IS COMPULSORY

SPINEXPO™ is an international event that brings together top-class spinners and integrated high-fashion knitwear manufacturers. It caters to the knitwear, weaving, hosiery, socks, shoes, home textile and technical sectors. This session hosts 145 exhibitors, including 15 knitwear manufacturers.

SPINEXPO AW 23-24 TRENDS

DIRECTIONS FEATURE DIFFERENT ASPECTS OF "TURBULENCES"



In this climate of disruption, could turbulences and instability be a boost for creativity ?
SPINEXPO proposes a trend area that explores the necessity of FLYING HIGHER.

Just as a pilot signals the need to fly higher when things get bumpy, we must all rise above this turbulence.

Flying Higher: the direction draws inspiration from aerodynamism and take to the air with streamlined proportions and silhouettes. Stitches are padded for extra protection and colors draw from the greyish tones of the stratosphere and present airy colours of quiet stability, carrying the wispy quality of our familiar favourites, an almost monochrome palette, forming a statement of elevated, uplifting, calming, spiritual, weightless, a-seasonal comfort, uncomplicated.

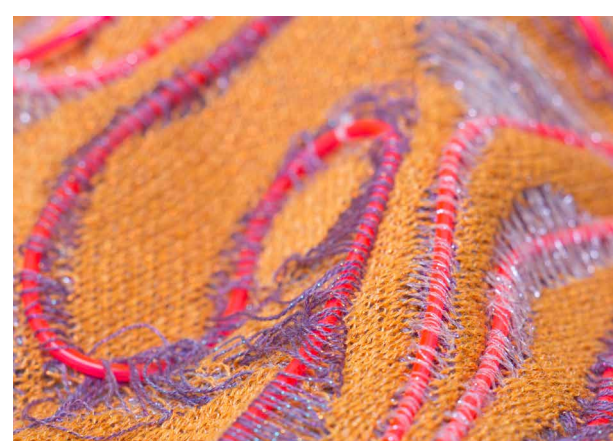


Emotional Turbulence: Reminiscing on our memories is the design approach to this group of lace and baroque pattern inspired collection. The combination of old vs new is achieved by creating delicate knit swatches and rubber printing baroque patterns as an overlay creating a modernist take on a classical idea.

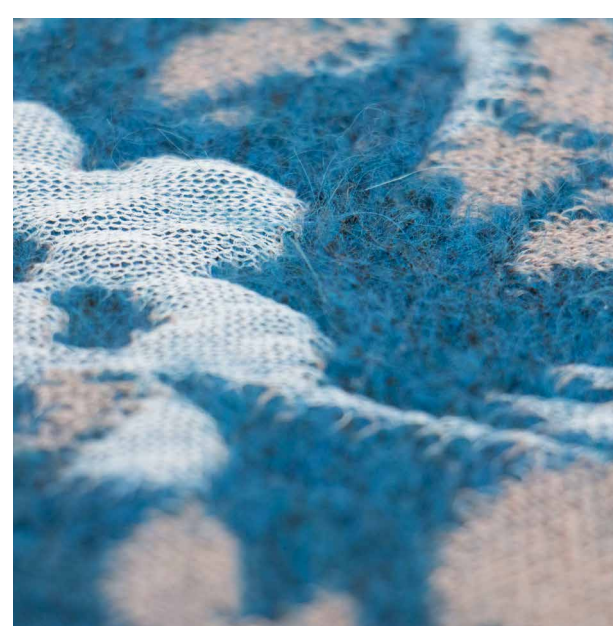
Terrestrial Turbulence: The most athletic of mankind faces the true tests of mother nature in all of her different terrains. The collection of swatches and garments are inspired by extreme sports and the textures that are associated with geometric patterns in nature.

We live in a time of transition between our past and future models, a kind of revolution that is taking us into a new age, where artificial intelligence and new technologies feature prominently. The planet expresses itself in many ways, in storms, floods, hurricanes, forest fires. Climate change is reflected in increasingly extreme events.

Health and financial disorders, society disruption, physical and financial wars... are changing our reality and disrupt our daily life. On an emotional level, there are marked differences of opinion and in all fields.



Cosmic Turbulence: Just like how our synapses spark when we think, create, dream, and imagine, the swatches in this group incorporate malleable fiber optic cables to show how light and technology could be incorporated into knitwear for functional and creative uses. The garments are designed with a modern twist where the silhouettes are very simple while all the complexity is built into the stitches and the foiling techniques.



DON'T FORGET

SPINEXPO™ SHENZHEN SPINCLUB
WILL TAKE PLACE
AT THE GRAND HYATT HOTEL, GRAND BALLROOM,
20-21 SEPTEMBER 2022

PRE-REGISTER:

WWW.SPINEXPO.COM