



HONG KONG - PARIS - SHANGHAI - SHENZHEN

Save the dates

SPINEXPO™ HONG KONG

B2B Presentation

20-21 JULY 2022

THE SPACE

2/F, D2 PLACE ONE - 9 CHEUNG YEE STREET - LAI CHI KOK, KOWLOON

Opening hours: 10.00 am to 6.00 pm



FIBRES | YARNS | KNITS | CIRCULAR KNITS | ACTIVEWEAR | SOCKS | HAND-KNITTING WOOLS

SPINEXPO™ organizes in Hong Kong a presentation of spinning and knitwear AW 23-24 collections through a simple presentation of the exhibitors' agents and export managers. This presentation gathers 34 exhibiting companies during two days.

An identical presentation will be held in New York

NEW YORK B2B Presentation

26-27 JULY 2022

THE GALLERY - METROPOLITAN PAVILION

MANHATTAN - NEW YORK

Opening hours: 9.00 am to 6.00 pm

Pre-registration and list of exhibiting companies:

www.spinexpo.com

Free entry to any company in the textile sector upon presentation of a business card.

Pre-registered visitors who have been accepted by the Organizer do not need to present a business card.

Don't forget

SPINEXPO™ SHANGHAI

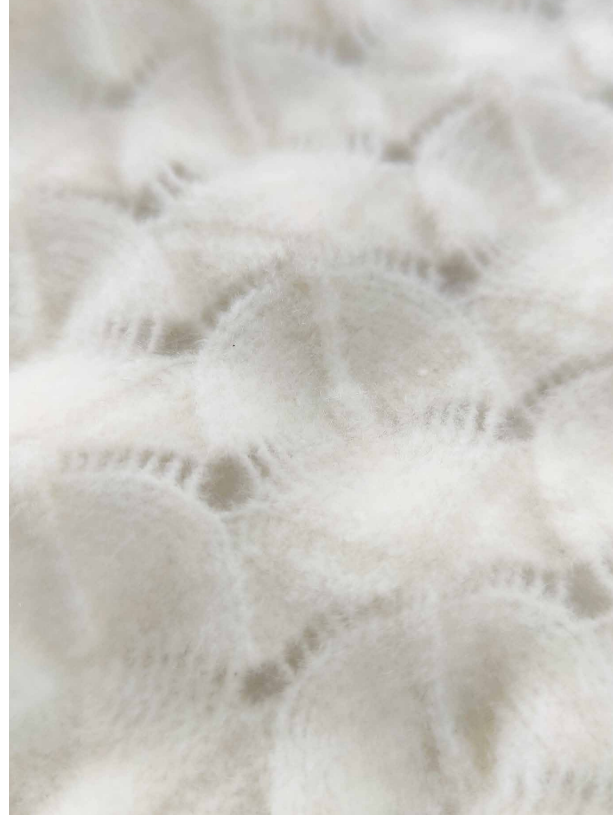
SPECIAL SESSION HOSTED IN

HANGZHOU

15-16-17 AUGUST 2022

HANGZHOU INTERNATIONAL EXPO CENTER

**NEW COLLECTIONS, NEW SERVICES,
NEW DEVELOPMENTS:**



JIANGSU GUOTAI HUASHENG INDUSTRIAL CO. LTD

is the core member of Jiangsu Guotai International Group. As one of the world's leading yarn suppliers, GTHS specializes in the development and production of a wide range of yarns, including cotton yarn, worsted yarn, semi-combed yarn, wool yarn and fancy yarn. Adhering to the concept of sustainability, the company has been certified by GRS, RWS, GOTS and Oeko-Tex100.

GTHS has offices in London, Los Angeles, Barcelona, Hong Kong, Shanghai, Bangladesh, Myanmar, Vietnam and Cambodia. The company is committed to becoming an integrated service provider serving international apparel brands, retailers and major traders, and to providing clients with accurate, timely and comprehensive services to promote the pace of innovation in global fashion.

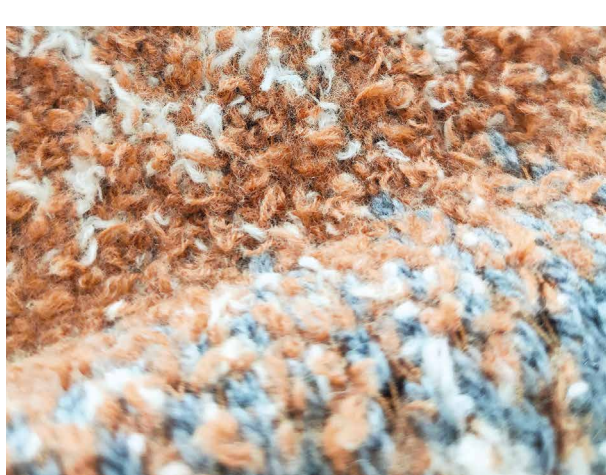
Several key yarns for the upcoming season:

GTHS01899: The combination of basic raw materials and a modification of the spinning process results in a delicate yarn with a cashmere-like soft touch, pleasant to the skin, warm and elegant.

GTHS01918: Good elasticity, soft and fluffy feel are the basic characteristics of a quality yarn for the high-end market. This yarn offers a luxurious feel at an affordable price. Combined with the recycled polyester concept, this yarn is undoubtedly the most sought after yarn on the market.

GTHS01950: A degrade with two contrasting colours that blend together for a soft and elegant yarn group that feels great to wear.

GTHS01958: This product breaks with the traditional spinning process of wool products. It uses a combination of different processes, and different contrast effects that reflect the warmth and comfort of the yarns in this wool series, which also has a wild side.

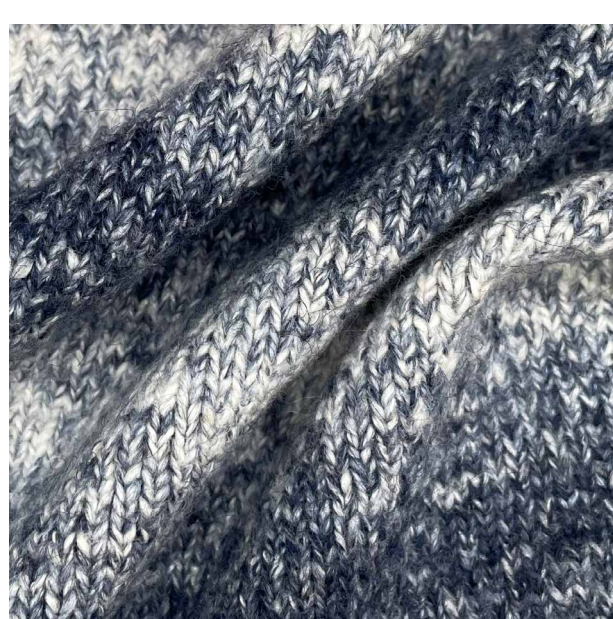


AA GLOBAL

has been in existence since 1989. The mill has dominated the Asian fancy yarn industry for over 30 years, with experienced staff and excellent production control management, attaining 8 million pounds annually. The mill has excellent customer service and a strong spirit of innovation.

Recycling" and "accreditation" are becoming key elements of the sustainable technology market, but the addition of recycling and accreditation processes should not be the only way to go green.

AA Global has been working to find another way to avoid dyeing and has developed a process called "Dry Dye".



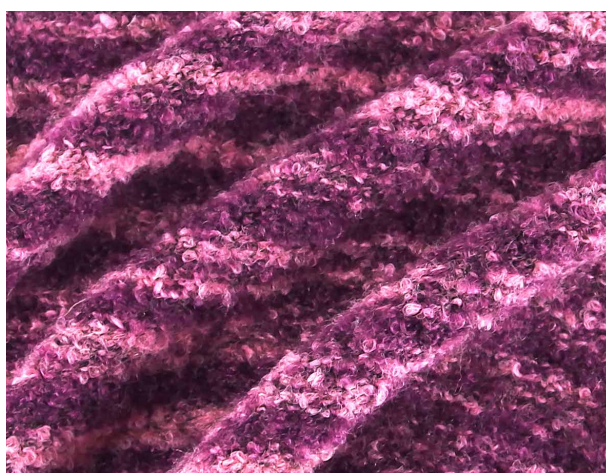
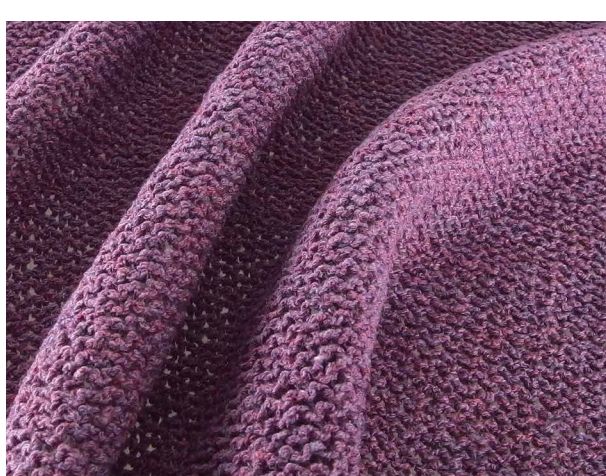
"SAY NO TO WATER DYEING"

In order to stop using a dyeing process that consumes a large amount of water, AA Global introduces a brand new collection based on DRY-DYE technology, and for this Fall/Winter 23 season, the improvement of DRY-DYE Tech™ products comes from the use of wools, soft and pleasant to the skin.

"A-LAB Customized Knitwear Design Solution"

A-lab is an integral part of AA GLOBAL, which boasts 30 years of experience in creating yarns that are recognized as "unique."

The acceleration of fashion collections has resulted in an orientation towards stock service and has eroded the "uniqueness" of many brands. A-lab helps its customers to realize collections that are different, thanks to the fact that A-Lab has its own fancy spinning system. A-Lab allows the realization of knitwear collections in closed circuit, guaranteeing the uniqueness and confidentiality of the product. The copyright and the labeling are managed by the after-sales service for a guarantee to the customers.



HONG KONG CONTACT: Keith Cheng, keith@spinexpo.com

NEW YORK CONTACTS: Wanda Qin, wanda@spinexpo.com

Steven Oo, stevenoo@qq.com

PRE-REGISTER:

WWW.SPINEXPO.COM