



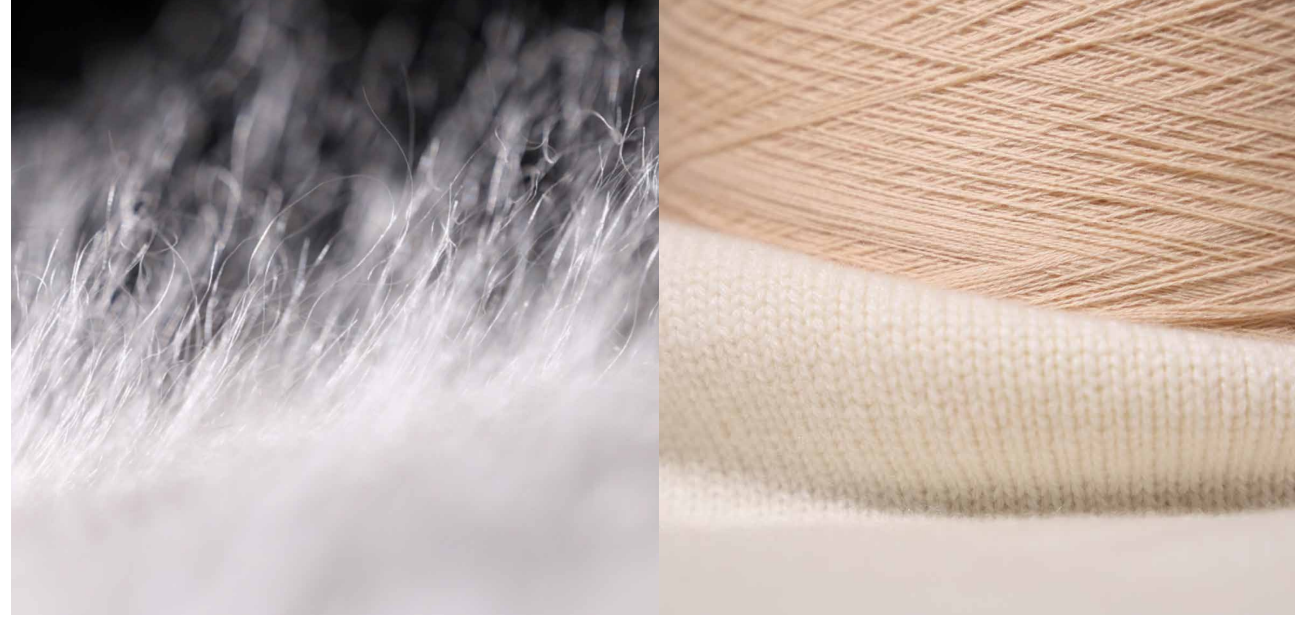
HONG KONG - NEW YORK - PARIS - SHANGHAI

SPINEXPO™ SHANGHAI IS BACK !

12-13-14 APRIL 2023

WORLD EXPO EXHIBITION & CONVENTION CENTER

1099 GUOZHAN ROAD - PUDONG 200126 - SHANGHAI



FIBRES | YARNS | KNITS | CIRCULAR KNITS | ACTIVEWEAR | SOCKS | HAND-KNITTING WOOLS

SPINEXPO™ is a world-renowned trade fair focused on the spinning and knitting industry.

SPINEXPO™ is a bridge between textile brands, spinners and knitwear manufacturers, with B2B sessions in Europe, Hong Kong and the US.

SPINEXPO™ Shanghai is the flagship exhibition with 140 exhibitors from the world's leading spinning and knitting companies.

After a long absence due to restrictions imposed during the Covid pandemic, SPINEXPO™ returns to Shanghai with new innovative collections, and a panel of exhibitors who have renewed their collections with new fibres and techniques with a focus on sustainability and consumer welfare.

HIGHLIGHTING THE BESTSELLERS OF SPRING/SUMMER 2024



JADE - the ultimate pure cashmere

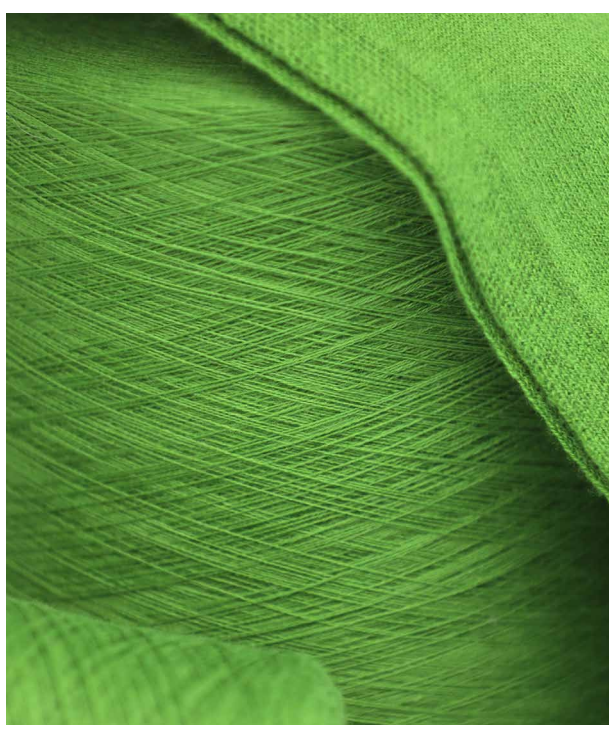
First-class craftsmanship and exquisite details bring the extraordinary quality of the ultimate pure cashmere, offer an extremely delicate touch and redefine the aesthetics and standards of cashmere.

RUBY – the luxury pure cashmere

Strict control of multiple processes provides a sophisticated, high quality texture, and conveys maximum tenderness while offering more possibilities for a warm touch. Rich trend colours and stock support.

M.ORO PREMIER - the luxury worsted wool collection

The lightness of the super fine yarns gives cashmere an elegant touch, delicate as cream, light as a feather, like a second skin, smooth and velvety with subtle nuances.



For the coming season, XINAO TEXTILES is promoting:

CHELSEA

2/60-3/60 NM, 30% Silk, 70% Lyocell
A blend of 30% mulberry silk and 70% lyocell. Mulberry silk is a natural animal fiber, Lyocell is a regenerated cellulose fiber, the solvent used in production can offer a recovery of 99.7%.

The combination of the two fibers provides good moisture absorption and breathability, good drapability and softness.

CHRISSI

2/48-60 NM, 60% Ultrafine Merino Wool, 40% Naia® acetate fibre

CHRISSI is a yarn obtained by blending 90s basolan wool fiber and Nadun fiber. The 17.5 micron fineness of the wool provides softness.

The Basuran process improves the dyeing performance of the wool fiber and maintains its handfeel, resulting in a more vibrant and saturated color after dyeing. Nadun fiber is a chemical fiber with effective and long-lasting anti-bacterial, anti-UV, moisture-wicking, far-infrared and other functions. The addition of the Naia fiber makes the yarn soft and pleasant to wear, a combination of comfort and functionality.



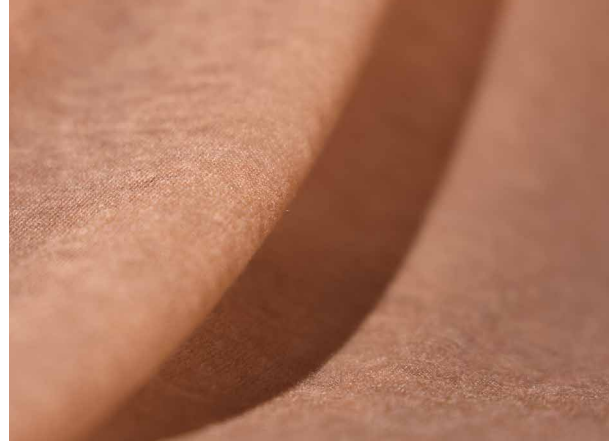
M.ORO CASHMERE

M.ORO CASHMERE advocates the delivery of high quality pure cashmere fibres and expands the possibilities of cashmere yarn by combining ingenuity and technology.

M. ORO CASHMERE presents its bestsellers for spring/summer 2024.

LITHE - brushed cashmere

The ultra-fine cashmere fibres are stretched to the extreme, giving the cashmere a fluffier body. The slender hairiness offers a warm experience and gives cashmere more possibilities. A whole new series of yarns, cashmere mixed with cotton, linen and silk.



XINAO

ZHEJIANG XINAO TEXTILES is a listed company focusing on the research and development, production and sales of wool and cashmere yarns. As a national key high-tech enterprise and a national green factory, XINAO has a national wool yarn product development base, a provincial enterprise technology center, a provincial enterprise research institute and also a knitting development center cooperating with THE WOOLMARK COMPANY.

XINAO has been honored with many international certifications such as OEKO-TEX STANDARD 100, ECO-LABEL, BLUESIGN, GOTS, OCS, RWR, GRS.



IOS

3/80-3/120 NM, 40% Ultrafine Merino Wool, 30% Lyocell, 30% Bio-degradable polyester

IOS is an environmentally friendly product made from wool fiber, a natural animal fiber; the recovery of solvents in the production of lyocell reaches 99.97%, and the biodegradable polyester degrades to 95% in 180 days under process composting conditions. The 15.5 micron fine non-shrink wool makes the product softer, skin-friendly and lighter, solves the problem of wool felting and is machine washable. Lyocell offers good moisture absorption and breathability, dyeing and anti-pilling performance and drapability.

KARPATOS

2/60-2/80 NM, 40% Ultrafine Merino Wool, 60% Lyocell

KARPATOS is a blend of 17.5micron anti-shrink wool and lyocell, a 1.5D fiber with low environmental impact. KARPATOS has good moisture absorption and breathability, good drapability and good dyeing performance.

CRETE

2/80 NM, 100% Ultrafine Merino Wool

CRETE is a 15.5micron pure wool fiber after basolan treatment which gives softness, fineness, skin-friendliness and bright, saturated colors to the finished garment.

PRE-REGISTER:

WWW.SPINEXPO.COM