



HONG KONG - NEW YORK - PARIS - SHANGHAI

40TH SESSION

SPINEXPO™ SHANGHAI

12-13-14 APRIL 2023

WORLD EXPO EXHIBITION & CONVENTION CENTER

1099 GUOZHAN ROAD - PUDONG 200126 - SHANGHAI



FIBRES | YARNS | KNITS | CIRCULAR KNITS | ACTIVEWEAR | SOCKS | HAND-KNITTING WOOLS

FAIR FACTS:

Opening hours : 9.00 am to 6.00 pm 12-13 April 2023

9.00 am to 5.00 pm 14 April 2023

SPINEXPO™ is a medium size, international and selective textile exhibition featuring mid to high-end exhibitors in the fibre, spinning and knitwear sectors.

SPINEXPO™ plays host to a large range of companies specialising in knitwear manufacturing and design.

Most of the knitwear manufacturers have their own collections and a Research & Development department, capable of working directly with international brands.

VISIT US AT WWW.SPINEXPO.COM.

Pre-register and view the extensive list of exhibitors and show specific information.

PRE-REGISTRATION IS COMPULSORY.

All visitors need to have pre-registered and received a bar code, and present an ID card and a business card matching one another.

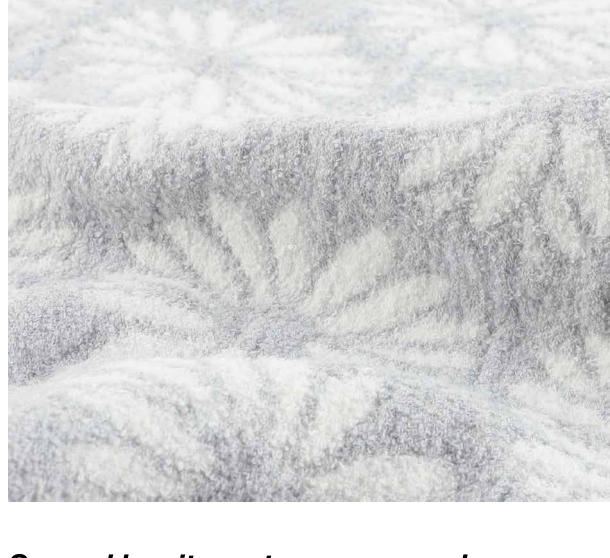
No entrance allowed outside this process.

DO not forget ID and your business card!

Constructive atmosphere for the 40th session of SPINEXPO™ Shanghai, at a time when durability and functionality are becoming a signature, a standard towards a new generation of yarns.

The demand for natural fibers continues, in symbiosis with synthetics, bringing a modernity to the collections thanks to the balance in compositions and constructions.

SPINEXPO ADVERTISE THE BEST SELLERS OF TWO GIANTS OF THE GLOBAL SPINNING INDUSTRY



Several key items to recommend:

HPS24022

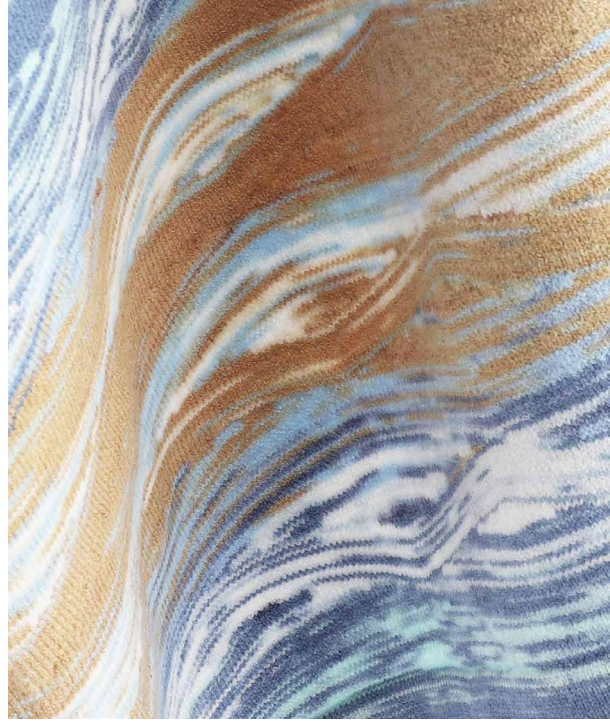
1/14.5 Nm, 58% Recycled Polyester, 28% Polyester 11 Nylon, 3%Spandex
Sustainable fiber spun into a fashionable mini-loop, creating a rich texture that makes the garment comfortable and unique.

HPS24028

1/5.5 Nm, 49% Cotton, 33% Recycled Linen, 18% Recycled Polyester
A blend of natural linen and cotton fibers results in a dry-handle, comfortable yarn with breathable, antibacterial and eco-friendly qualities. This rustic look works equally well for women's and men's clothing.

HPS24009

2/48 Nm, 50% Livaeco™ Viscose, 28% PBT, 22% Nylon
The moisture content of the sustainable Birla viscose fiber is super comfortable against the skin. The use of a core spun technique creates excellent breathability, shape retention with a soft grip. Multiple colors offer great variety.



HUBO

HUBO strives to lead the way in the use of sustainable, eco-friendly and functional yarns and is dedicated to innovation in fiber and spinning techniques with environmental protection in mind. This season's collections focus on new innovations in spinning, while striving to offer the best quality and hand feel. In addition to the basic range, they offer new fancy yarns, such as natural linen and cotton blends, extra-fine sheer yarns, baby curls, multi-color dyeing techniques and painted decolorizations using sustainable fibers.



FN2302077

1/44 Nm, 73% Viscose, 17% Metallic, 10% Nylon
This ultra-fine metallic yarn offers an incredible and extremely soft handle, with a delicate and luxurious look.

FN2302009

1/2.8 Nm, 92% RWS merino wool, 6% Polyester, 2% Sequin
Exquisite sequins combined with natural, traceable wool fiber elevate this fabulous, high-end yarn.

FN2201018

1/12 Nm, 70% Nylon, 15% Polyester, 15% Metallic
Blending a super soft, lightweight feather yarn with a sparkling metallic creates something new and cutting edge.

LUGANG GROUP

There're two sub-companies below the group. For each company, they'll have their highlighting products as below:

JIANGSU LUGANG SCIENCE & TECHNOLOGY

HERMES

2/56 Nm, 30% Acetate (NAIA™), 40% RWS wool, 30% lyocell (tencel™)
This yarn uses degradable acetate and lyocell fiber and has a natural silk-like sheen; it is blended with Responsible Wool Standard fibers. It has excellent breathability and is designed for high-end fashion brands.

DONDA

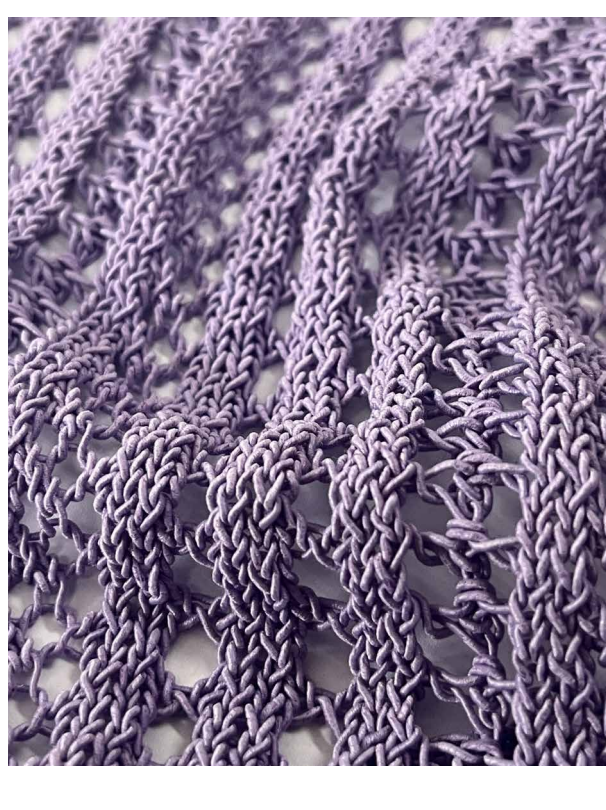
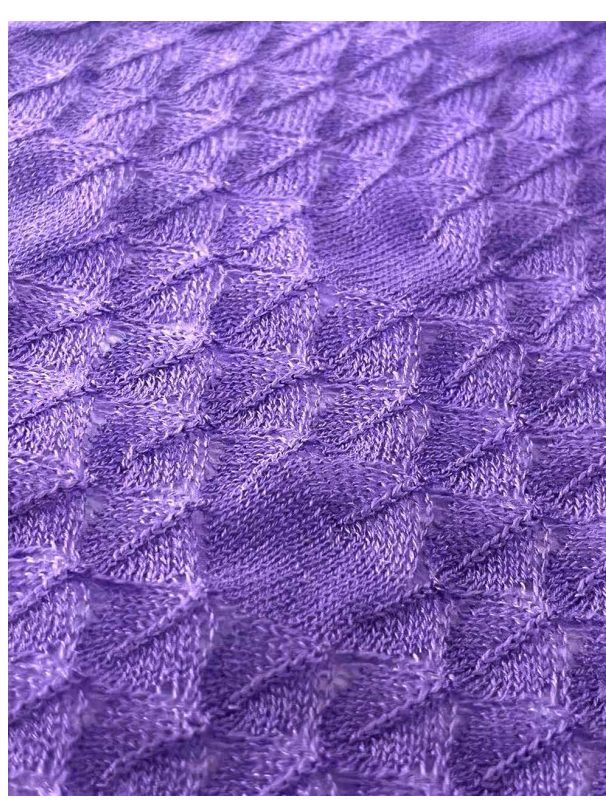
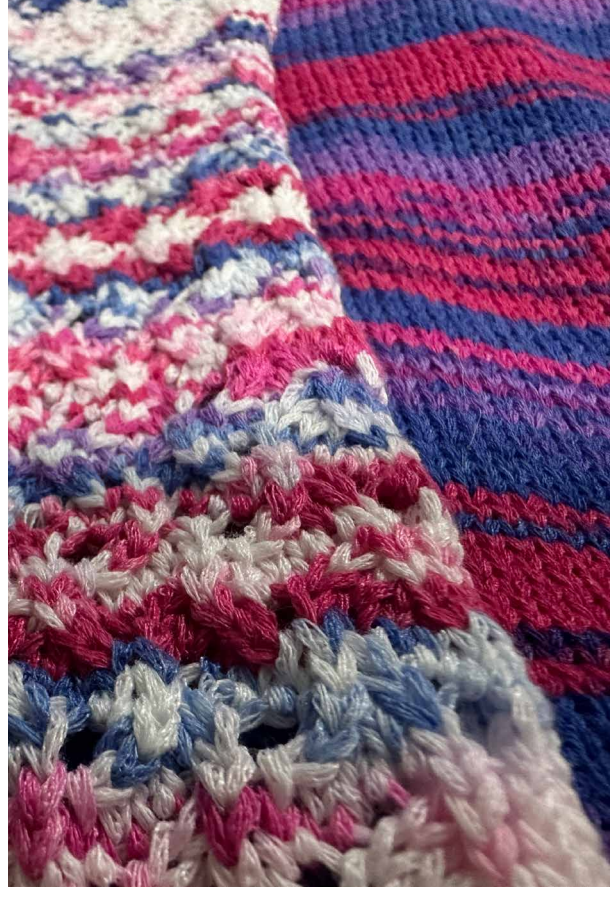
3/68 Nm, 70% Acetate (NAIA™), 30% RWS wool
Our company is always promoting socially responsible products, like this fresh wool yarn with good breathability, clean surface and soft handling. We offer a multi-colored sampling for customers all over the world.

ABLAZE

1/4 Nm, 68% Cotton, 32% Nylon
This yarn has a rounded shape with a three-dimensional effect and a smooth surface. It is designed for open stitch pattern knits for spring and summer, trendy this season.

SUPERNOVA II

1/27 Nm*2, 65% Recycled polyester, 35% Cotton
We apply a multi-color dyeing process to this yarn with a high proportion of recycled fiber. It allows for unlimited design creativity and aligns with our company's mission to support sustainability in the industry.



JIANGSU LUGANG TIANWEI SCIENCE & TECHNOLOGY

BIZARRERIE

1/5.4 Nm, 100% Recycle polyester
We implement different space dyeing effects in our yarns with regenerated fibers. This makes it possible to design options and supplements in design matching in a colorful way. It becomes a wonderful interpretation of parity.

PLUMP

1/3 Nm, 60% BCI cotton, 40% Recycled polyester
This is a blend of recycled polyester and Better Cotton Initiative (BCI) cotton fiber, light and fluffy, suitable for chunky gauge use. It makes light and fashionable knitwear.

FOSSETTE

3/45 Nm, 75% BCI cotton, 25% PBT
The natural cotton fiber has very good breathability, and we use PBT fiber with reliable elasticity. The yarn is delicate to the touch and has good recovery and shape retention attributes.

PRE-REGISTER:

WWW.SPINEXPO.COM