

HONG KONG - NEW YORK - PARIS - SHANGHAI

40TH SESSION

SPINEXPO™ SHANGHAI

12-13-14 APRIL 2023

WORLD EXPO EXHIBITION & CONVENTION CENTER

1099 GUOZHAN ROAD - PUDONG 200126 - SHANGHAI



FIBRES | YARNS | KNITS | CIRCULAR KNITS | ACTIVEWEAR | SOCKS | HAND-KNITTING WOOLS

FAIR FACTS:

Opening hours : 9.00 am to 6.00 pm 12-13 April 2023

9.00 am to 5.00 pm 14 April 2023

SPINEXPO™ is an international knit event that brings together top-class spinners and integrated high-fashion knitwear manufacturers. It caters to the knitwear, weaving, hosiery, socks, shoes, home textile and technical sectors.

Don't miss signature industry advancements live, the latest knitwear collection developments and the leading technical innovations in yarns and fibres..

VISIT US AT WWW.SPINEXPO.COM.

PRE-REGISTRATION IS COMPULSORY.

All visitors need to have pre-registered and received a bar code, and present an ID card and a business card matching one another.

No entrance allowed outside this process.

DO not forget ID and your business card!

FOCUS ON EXHIBITORS' BEST SELLERS.

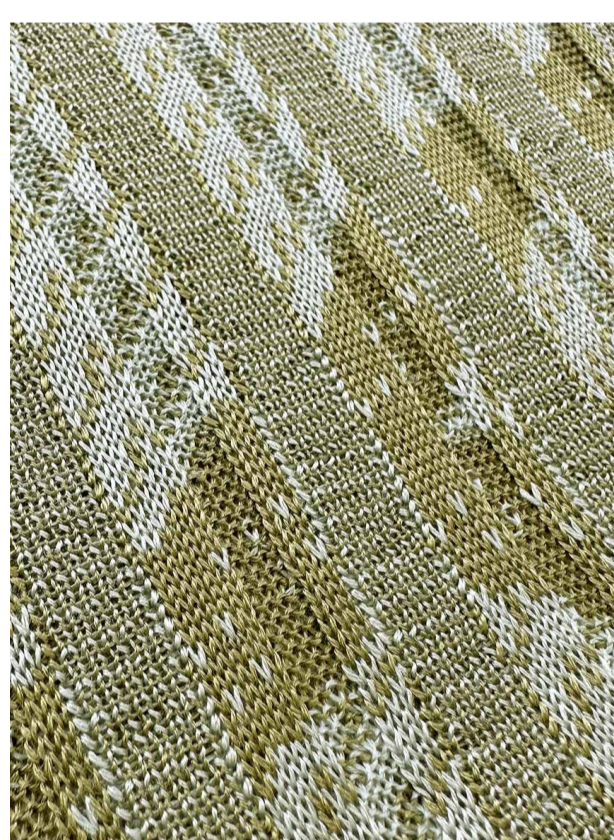


SKYE

2/60 Nm GCS, 100% Cashmere (Worsted)
GCS cashmere guarantees traceability and sustainability from farm to yarn. SKYE is a natural, high-end, eco-friendly, lightweight and skin-friendly quality, perfect for inter-seasonal knitting. A new aesthetic that emphasizes refinement and comfort. A soft and flexible yarn structure in spring and summer to stay fashionable and create light and soft knitting features.

KASHGAR

2/48 Nm, 85% Silk, 15% Cashmere (Semi-worsted)
Silk and cashmere are two premium natural fibers that we combine in the Kashgar quality. Silk is silky and delicate to the touch. The precious cashmere fibers are soft, lush and uniform in color. The combination of premium silk and premium natural cashmere fibers gives the product a more relaxed and comfortable wearing experience.



TOP LINE

Sustainability is the driving force behind all new developments and directions in fashion, not as trends but as an industry standard for finding long-term solutions for environmentally friendly designs. The same is true for Topline, which places ecological initiatives at the heart of all new yarn developments, from fiber to production.

LORY

Nm 4,500, 65% Cotton, 35% Hemp
LORY is made from a refreshing blend of cotton and hemp, with a hollow ribbon yarn. 5G applicable, cotton and natural linen not only give the design a more relaxed texture, but also offer the added benefit of breathability, which is very important in the summer. The loose silhouette is ideal for creating a lazy vacation vibe.

MONICA

Nm 34,000, 83% Rayon Viscose, 17% Polyester Fiber
Technological elements collide with retro street style to inspire a new element of fabric structure, adding a fresh, youthful element to the sports field. MONICA is a fine viscose blend with a high-quality matte feel, exquisite softness and exceptional hand. The micro-dimensional 3D effect updates the flat knit, injecting visual accents and positive emotions with psychedelic prints and bright colors. The soft knit dress is created by adding textured materials, laces and irregular cutouts to create a comfortable feminine garment that does not lose its delicate and sexy attributes.



CONSINEE GROUP

Modernism at the service of environmental protection.

CONSINEE GROUP was established in 1999 and implements advanced green technological innovations in the yarn industry. Together with German Siemens, we have built the world's first intelligent, digital and unmanned factory, which fully adopts green electricity, energy saving and environmental protection. The factory uses recycled water to save water and energy.

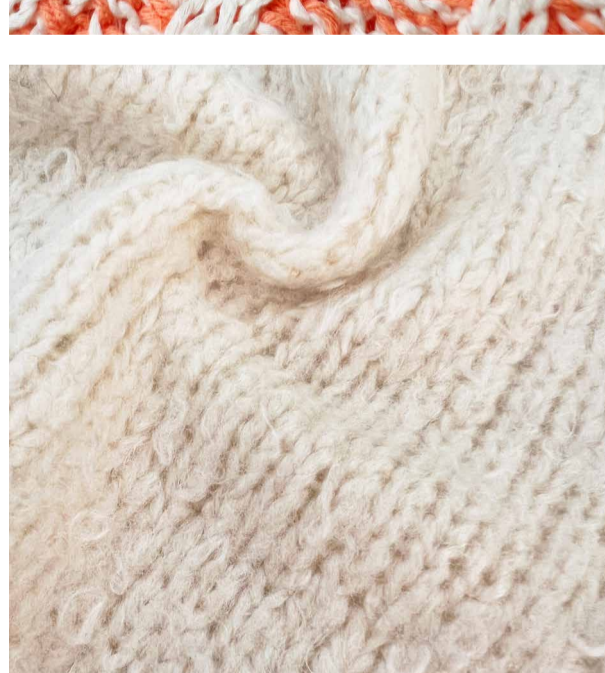
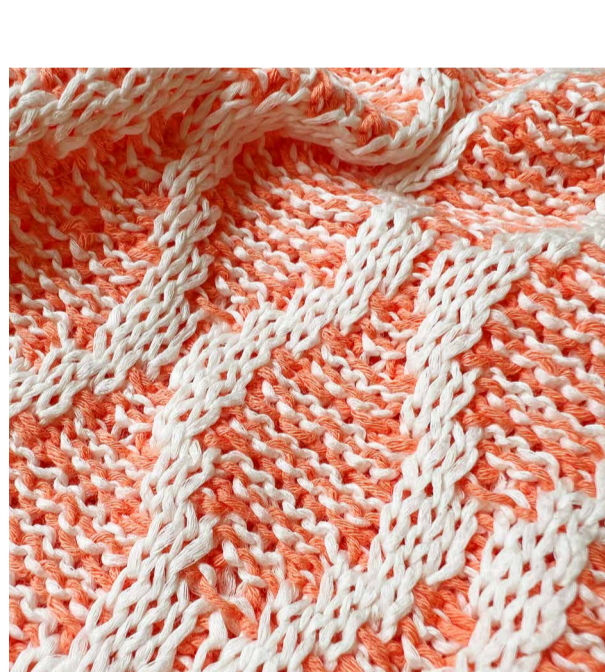


KYOTO EASY

2/120 Nm, 100% Silk machine washed
Kyoto Easy is a functional yarn. We use special technology to achieve a machine washable function, which solves the difficulties of silk maintenance for consumers and brings convenience to the fast pace of urban life. We choose an advanced luxurious silk raw material to spin it into 2/120nm ultra fine, and obtain a delicate, light and clean product that has a soft and supple effect, as well as a three-dimensional shine and sense, showing a delicate and romantic atmosphere.

BRYANT

2/54 Nm, 55% Hemp, 45% Cotton
Hemp, one of the most environmentally friendly plants, is a sustainable fiber that is easy to grow and uses very little water. Bryant's blends of hemp and BCI cotton offer a dry, cool feel ideal for spring and summer. By emphasizing the balance of contrasts between the slightly rough look of hemp and the comfortable feel of cotton, it enhances the aesthetic feel of the texture, emphasizing respect and nostalgia for the original ecology and nature.



ORIANA

Nm 20000, 54% Extra fine merino wool, 23% Cashmere, 23% Wool yarn
Bright, cheerful colors of flowers and fruits and delicate, soft fabrics together create an exclusive soft style in spring and summer paradise. Sophisticated brushed yarn, made from 100% natural fibers, extra fine merino wool and cashmere, gives the knit a luxurious feel and a flat, smooth surface. Silk filaments add shine and create a soft feel. The thin, sheer material combines a simple silhouette with light, muted colors to create a thin, sheer fit, exuding sexy appeal and making the knit more feminine.

OSLO

Nm 2,400, 100% Tussah Silk
OSLO is a coarse brushed silk crushed yarn that is understated and luxurious, giving off a slight sheen. The distinctive brushing process lends a sense of sophistication and quality to the piece, while the comfortable feel and shape creates a lazy, relaxed atmosphere. The striking colorful stripes and soothing long fleece weave chase away the post-epidemic gloom and provide positive inspiration.

PRE-REGISTER:

WWW.SPINEXPO.COM