

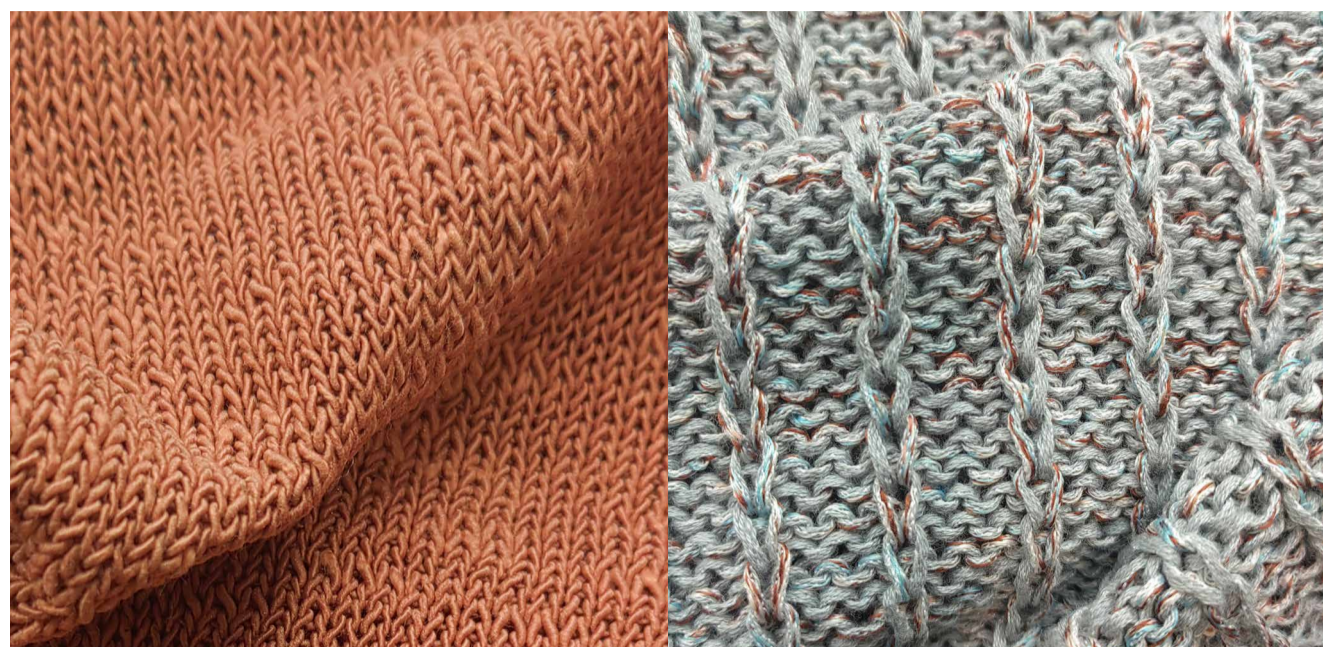
HONG KONG - NEW YORK - PARIS - SHANGHAI

SAVE THE DATES SPINEXPO™ HONG KONG

19 & 20 JULY 2023

THE SPACE

2/F, D2 PLACE ONE - 9 CHEUNG YEE STREET - LAI CHI KOK, KOWLOON



YARNS - FIBRES - KNITWEAR - KNITTED PRODUCTS

PRE-REGISTER

AND CHECK THE EXHIBITORS' LIST ON OUR WEBSITE

WWW.SPINEXPO.COM

XINFANG

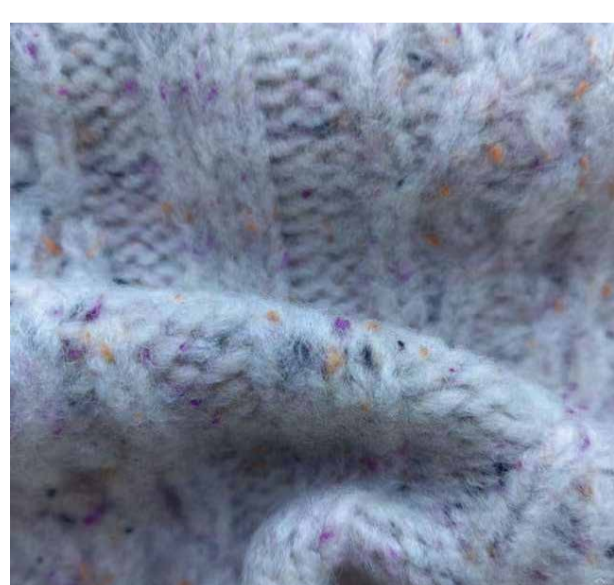
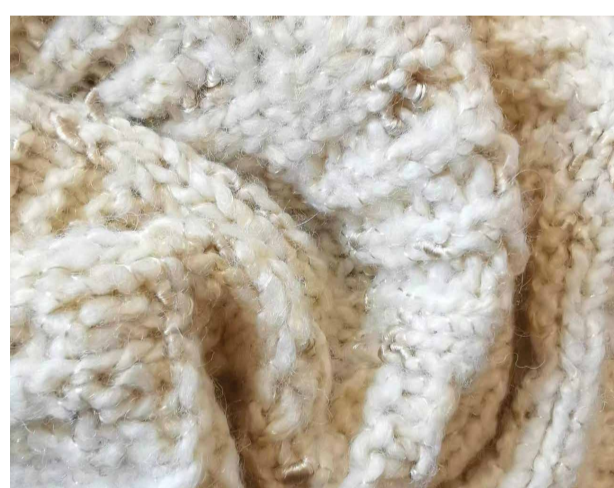
A fancy yarn specialist introduces his brand new collection.



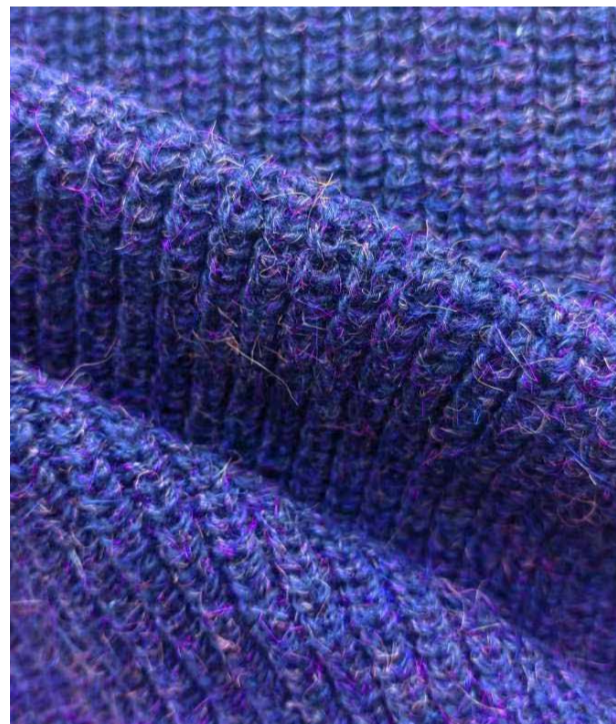
BELLA XFAW1249 1/4 Nm, 49% Acrylic, 18% Nylon, 17% Cotton, 16% Wool
Breaking with traditional yarns that have less neps, this air-spun yarn has a high proportion of neps and is characterised by its lightness, warmth, comfort and softness.

MARICO XFAW1251
2/7 Nm, 60% Regel™ Re-Acrylic, 25% Recycled Wool, 15% Nylon
This yarn uses recycled GRS acrylic fibres from the Birla group and recycled wool as raw materials. It is a green, environmentally-friendly yarn that is perfect for the AW season. It is fluffy, thick and rough.

SEBASTIAN XFAW1263
1/9 Nm, 40% RWS Wool, 23% Re-Polyester, 20% RAS Alpaca, 15% Acrylic, 2% Spandex
The use of RWS wool and RAS alpaca as raw materials results in a natural, soft handfeel, with characteristics of lightness, warmth, comfort and quality.



For the Autumn/Winter 24/25 season, Xinfang has prepared 90 sets of new yarns and 55 sets of good quality bulk yarns, widely recognised and accepted by the market. Xinfang uses various sustainable and natural organic fibres and spinning techniques to introduce new yarns on a regular basis.



LINDSAY XFAW1283 2/15 Nm, 50% Post-Consumer Recycled Wool, 28% Pre-consumer Recycled Nylon, 11% Post-Consumer Recycled Nylon, 11% Post-Consumer Recycled Viscose
This yarn uses 100% recycled fibres, including 72% post-consumer fibres. It has a warm, dry feel. It is available from stock and can be supplied with a colour book.

MAUREEN XFAW1296 1/20 Nm, 72% Recycled Polyester, 20% Acrylic, 5% Wool, 3% Spandex
RUTH XFAW1297 1/20 Nm, 78% Recycled Polyester, 19% Acrylic, 3% Spandex
Thanks to the special sand-spinning process, these two yarns combined offer a kind of soft cashmere feel that is light, warm and cost-effective, meeting the strong market demand for fine-gauge sand-spun yarns.

CHECK THE LIST OF EXHIBITORS
AND PRE-REGISTER ON OUR WEBSITE:

WWW.SPINEXPO.COM

DON'T MISS

SPINEXPO™ SHANGHAI

29-30-31 AUGUST 2023

WORLD EXPO EXHIBITION & CONVENTION CENTRE

THE LARGEST FOCUSED EXHIBITION
FOR YARNS, FIBRES, KNITWEAR AND KNITTED PRODUCTS

DISCOVER OUR TRENDS AND PRODUCTS ON:

WWW.SPINEXPLORE.COM