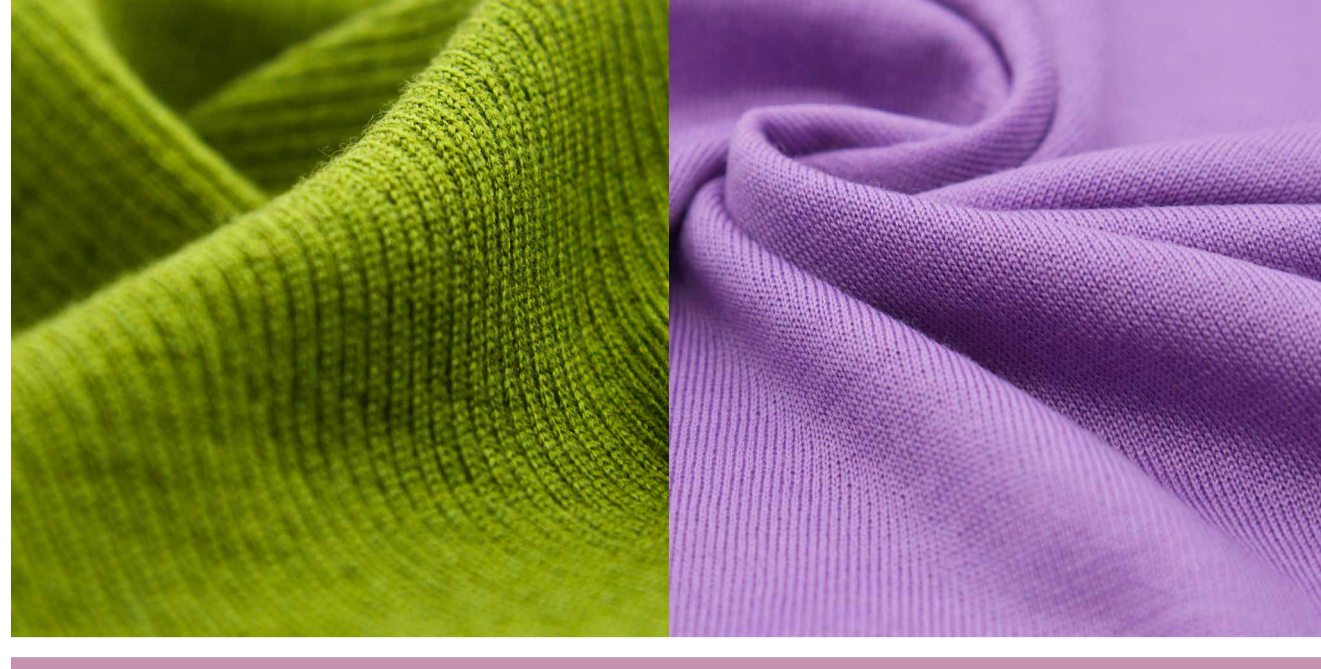


SAVE THE DATES SPINEXPO™ SHANGHAI

29-30-31 AUGUST 2023

WORLD EXPO EXHIBITION & CONVENTION CENTRE

1099 GUOZHAN RD, PUDONG, SHANGHAI, CHINA



THE PRIMARY EXHIBITION FOR YARNS & KNITWEAR

NOT TO BE MISSED!

SPINEXPO™ is a specialized trade fair for knitting, spinning, textile fibers and software developments of machinery for flat and circular knitting.

SPINEXPO™ brings together the flagship companies specializing in spinning and textile fibre innovation that supply renowned fashion brands, both domestic and international.

SPINEXPO™ works with an international style team to present buyers with creative developments and ideas, ranging from homewear to accessories, knitwear, textile constructions and weaving.

SPINEXPO™ is a bridge between Textile brands and knitwear manufacturers, spinners and designers, fibre manufacturers and promoters.

SPINEXPO™ has selected Südwolle Group, a key player in the merino yarn sector, to present the latest additions to its Autumn/Winter 24-25 collection.

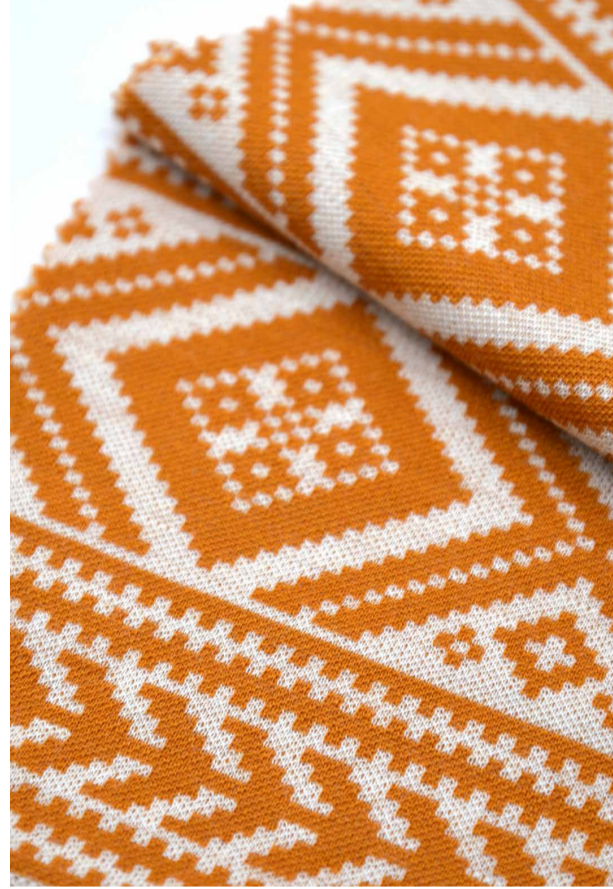
SÜDWOLLE GROUP

NEW BLENDS FOR BETTER YARNS

Südwolle Group collections are known for the perfect quality of their merino yarns. For the coming Autumn/Winter 24-25 collections, new techniques have been developed to eliminate toxic substances during the manufacturing process, adding new, ultra-modern products to an already rich collection.



Südwolle Group is a global producer of worsted yarn in pure wool and wool blends for weaving, circular, flat knitting and technical applications. The company's collections Südwolle, Biella Yarn, Yarn in Motion, Richter, HF, Stöhr and Soey are focused on different segments of the global textile market.



HIGHLIGHT ON THE COLLECTION

Espresso Nm 30/2

100% Merino wool, 20.5µ, untreated

Espresso yarn is made from natural brown wool blended with undyed wool, creating various shades of brown. Both the brown and undyed wool are untreated, ensuring an environmentally friendly and safe product without the emission of harmful chlorine gases. The Espresso yarn utilizes 20.5micron natural brown wool, resulting in garments that are structured, stylish, and exhibit excellent wrinkle resistance.

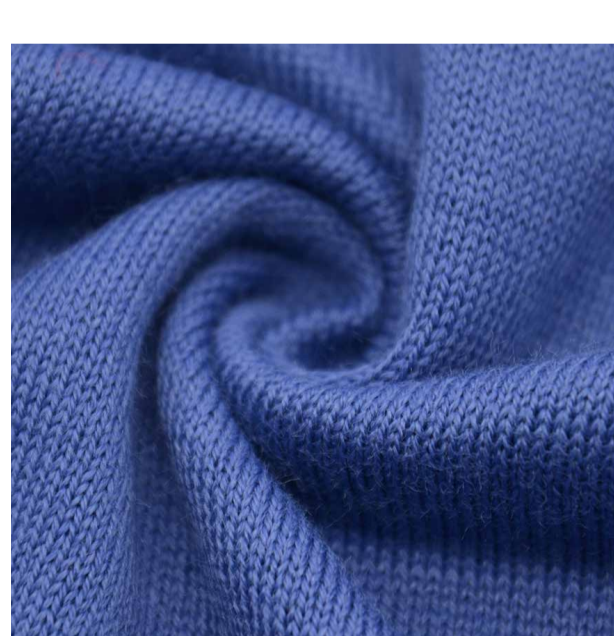
Genziana Nm 30/2

100% Merino wool Extrafine, 19.5µ Naturetexx® Plasma

Südwolle Group's Naturetexx® Plasma technology utilizes electrical energy to generate ionization, forming a plasma field.

The wool passes through this plasma field, causing a reaction with the wool scales, reducing scaling and felting, thereby providing shrink resistance. This sustainable treatment technology avoids chlorine compounds and harmful AOX substances, making it environmentally friendly.

Moreover, this technology not only enhances the fiber's machine washability and maintaining its strength, but also improves resistance to pilling and significantly enhances moisture absorption.



Mistral Eco Nm 48/2

45% Merino wool extrafine, 19.5µ ;

55% COOLMAX® EcoMade

Mistral Eco yarn incorporates COOLMAX® EcoMade, an eco-friendly polyester fiber made from recycled plastic bottles, thus reducing the global plastic waste.

Additionally, COOLMAX® EcoMade fiber offers moisture-wicking properties. When combined with wool fibers, it provides exceptional comfort, making it highly suitable for both sports and daily wear.



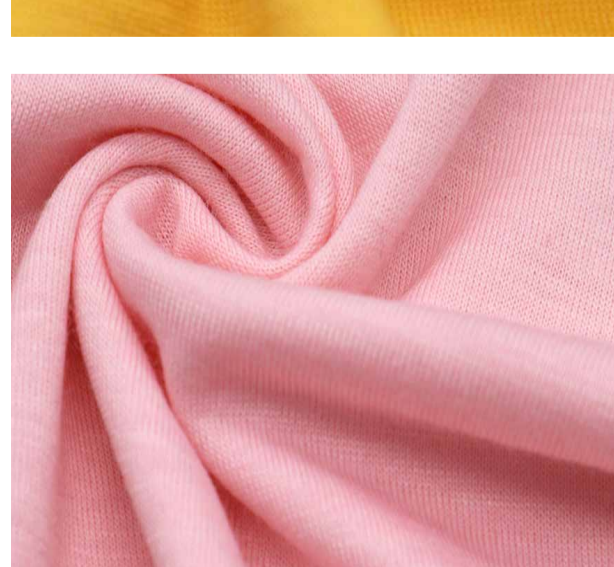
Sakura GRS Nm72/1

40% Merino Extrafine, 19.5 µ, TEC,

60% Renu™ Recycled polyester

Renu™ undergoes a chemical process to recycle polyester clothing by depolymerizing, refining, and purifying polymers, resulting in recycled polyester of comparable quality to virgin polyester.

This chemical process enables infinite cycles of polyester recycling, thus greatly reducing global waste.



Neptun RWS GRS Nm 60/1

55% Seaqual® Marine recycled polyester,

45% Merino wool extrafine, 18.4µ,

Total Easy Care

Seaqual® ocean recycled polyester is produced from plastic bottles collected from the ocean, making it beneficial in addressing marine microplastic pollution.

When combined with extrafine Merino wool, it offers softness, comfort, excellent shape retention, and is highly suitable for active-wear and base layers.

**CHECK THE LIST OF EXHIBITORS
AND PRE-REGISTER ON OUR WEBSITE:**

WWW.SPINEXPO.COM

DISCOVER OUR TRENDS AND PRODUCTS ON:

WWW.SPINEXPLORE.COM