



HONG KONG - NEW YORK - PARIS - SHANGHAI

SAVE THE DATES SPINEXPO™ SHANGHAI

29-30-31 AUGUST 2023

WORLD EXPO EXHIBITION & CONVENTION CENTRE
1099 GUOZHAN RD, PUDONG, SHANGHAI, CHINA



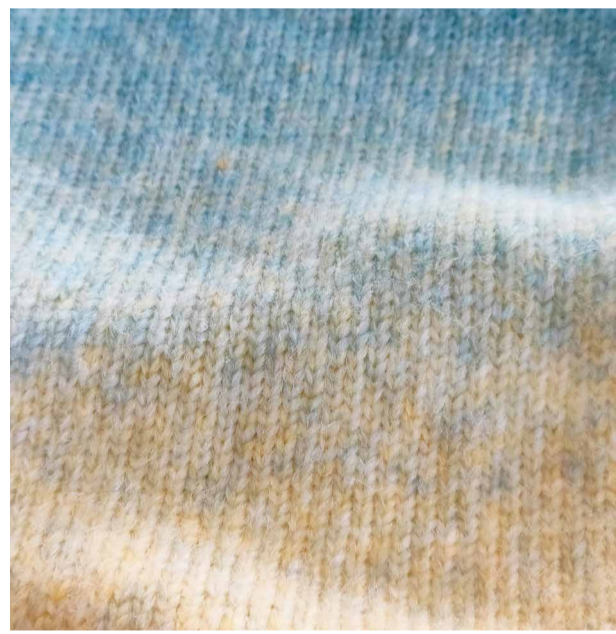
THE PRIMARY EXHIBITION FOR YARNS & KNITWEAR

SPINEXPO™ is an international event that brings together top-class spinners and integrated high-fashion knitwear manufacturers. SPINEXPO™ selection of exhibitors is a tribute to the high level of creativity and technicity of a continent that developed its knowledge of high-end manufacturing before integrating its own style trends and combining fashion sense with technical prowess.

GTHS

PRODUCTS AND COMPANY HIGHLIGHT

GTHS is an integrated service provider to international clothing brands, retailers and major traders, providing a rapid and comprehensive response to its customers' needs.



GTHS is specialized in developing and producing a wide range of yarn products, including cotton spinning, worsted, semi-worsted, woollen and fancy yarns. Adhering to the concept of sustainable development, it has been certified by GRS, RWS, GOTS and Oeko-Tex100.

GTHS has set up numerous entities at home and abroad, and has satellite offices in London, Los Angeles, Barcelona, Hong Kong, Shanghai, Bangladesh, Myanmar, Vietnam and Cambodia.

For the Autumn/Winter 24-25 season, Huasheng has selected the following new products:

GTHS02074 SABRANA:

1/3.3 Nm

54% Acrylic, 41% Nylon, 5% Alpaca

SABRANA is a airspun yarn made of alpaca like fibers, fluffy, super soft, elevated textured are the characteristics. Although the price is favorable, but it achieved high-end quality effect.



GTHS02034 ROLLO

1/13 Nm

37% BCI Cotton, 35% Nylon, 25% Acrylic, 3% Spandex

Without adding cashmere, it achieves the hand feel of cashmere, even surpassing the effect of cashmere. With the combination of BCI COTTON, it further enhances the skin-friendly feeling of the swatches.

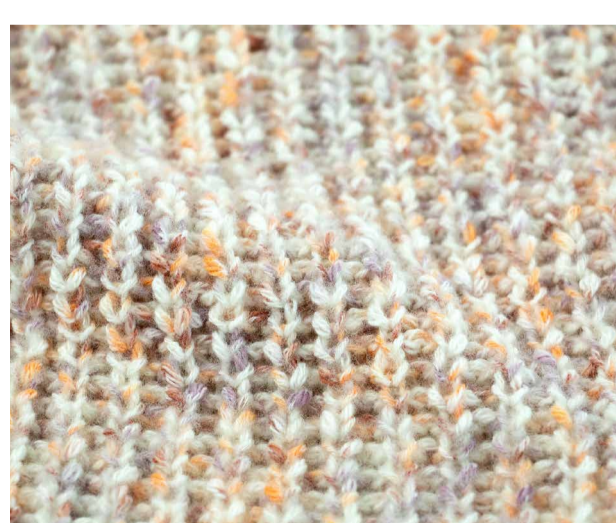
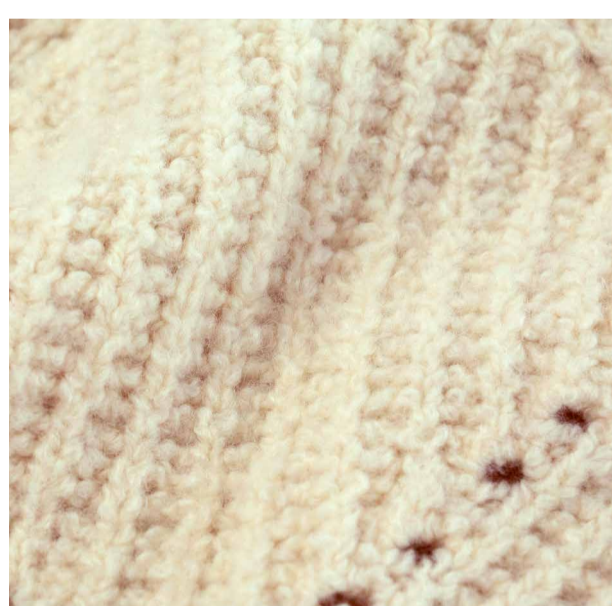


GTHS02060 JAYCE

1/3.6 Nm

40% Acrylic, 25% Wool, 21% Nylon, 12% Polyester, 2% Spandex

Wool blend swatch is characterized by warmth and fluffy. This yarn adopts a basic sense of the process settings, which adds a three-dimensional sense to the fabric based on the advantages of raw materials, making it more full, fluffy, and textured.

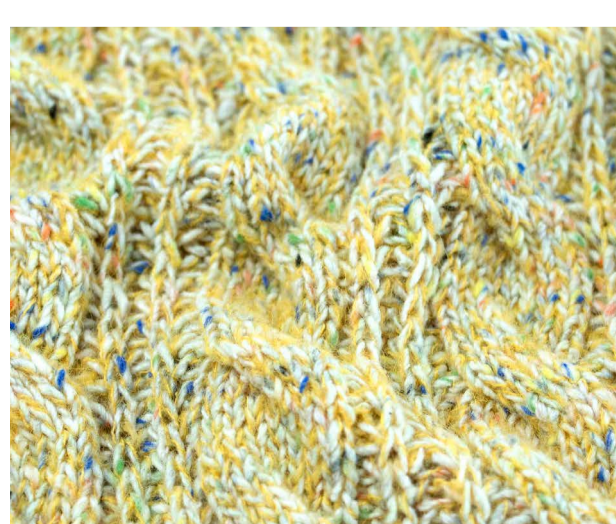


GTHS02106 FABIAN

1/2.7 Nm

66% BCI Cotton, 25% Wool, 9% Nylon

Slub, Colour Change, Nature, Warm, are the keywords of this yarn. Integrating all these elements together, providing a unique visual experience with rich color mixing effects and textured effect.



GTHS02107 JANTIS

1/4.2 Nm

42% BCI Cotton, 36% Acrylic, 15% Nylon, 6% Polyester, 1% Wool

The combination of bone and fluffy, plain color and colorful compound, completely opposite elements combined to achieve a complementary effect. With no sense of vilation and more of a visual impact.

CHECK THE LIST OF EXHIBITORS
AND PRE-REGISTER ON OUR WEBSITE:

WWW.SPINEXPO.COM

DISCOVER OUR TRENDS AND PRODUCTS ON:

WWW.SPINEXPLORE.COM