

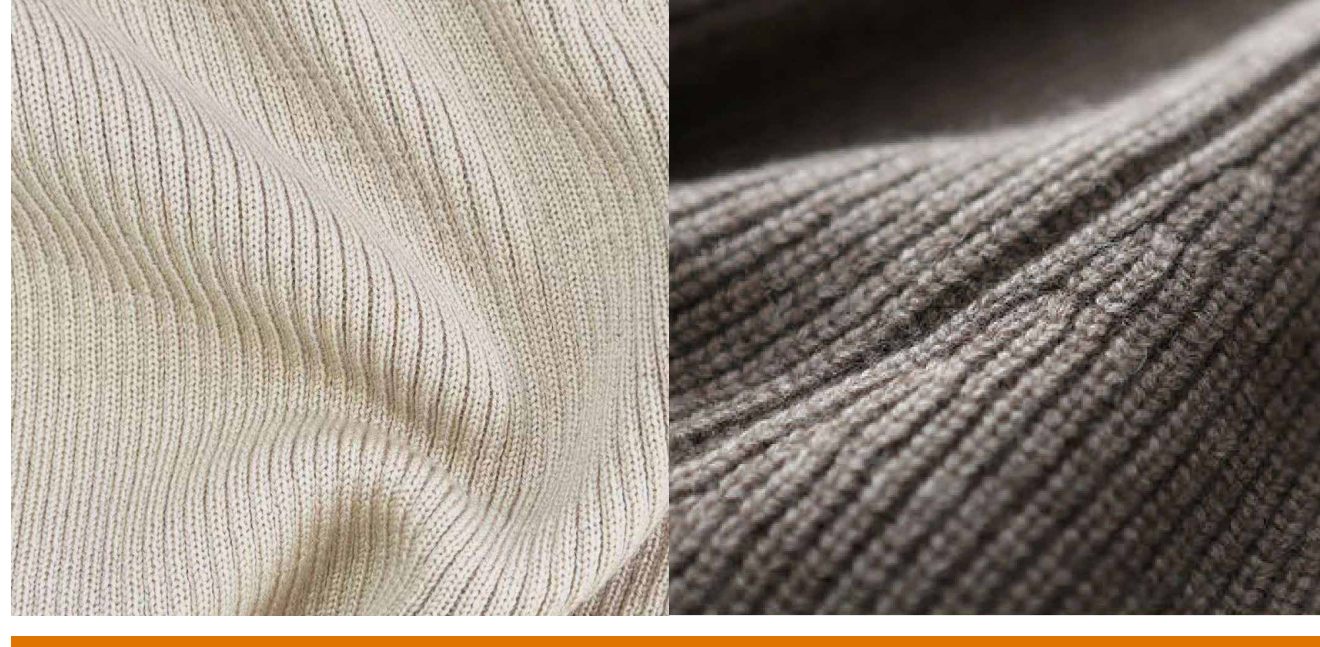


HONG KONG - NEW YORK - PARIS - SHANGHAI

ONE DAY TO GO UNTIL B2B SPINEXPO™ PARIS

5 & 6 JULY 2023

GALERIE JOSEPH



YARNS - FIBRES - KNITWEAR - KNITTED PRODUCTS

SAVE TIME: PRE-REGISTER!

WWW.SPINEXPO.COM/PARIS/PRE-REGISTRATION

EVEN MORE INNOVATIONS AT SPINEXPO™

SPINEXPO'S Exhibitors have a common goal to renew their textile offering by modernization and making it more user-friendly.

This is particularly true of Lugang Science & Technology, which is presenting an innovative AW 2024 collection and an impressive fast service.

LUGANG SCIENCE & TECHNOLOGY



PRODUCTION-SUPER WOOL FAMILY

COMPA WOOL

Less hairiness, more benefit!

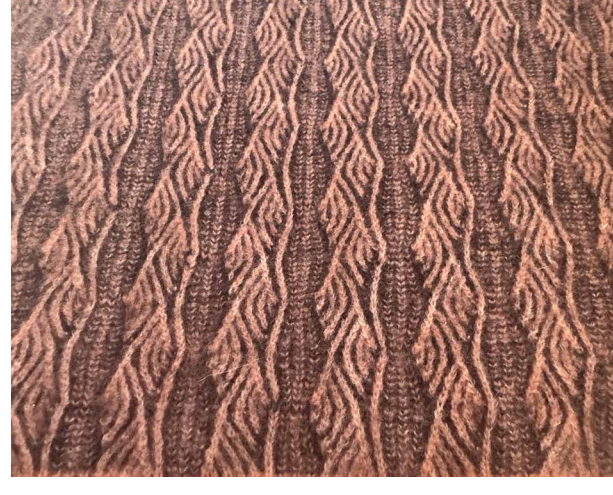
A high-quality worsted merino wool yarn produced with compact spinning equipment imported from Germany and sophisticated technology.

REGAL WOOL

Renewed, Ecological, Glitter, Anti-pilling, Leading.

Plant Dye Wool.

Natural dyed plants not only meet the requirements of environmental protection and green production, but also the requirements of comfortable and healthy use.



PRODUCTION-SUSTAINABLE FASHION

TRACEABLE YAK

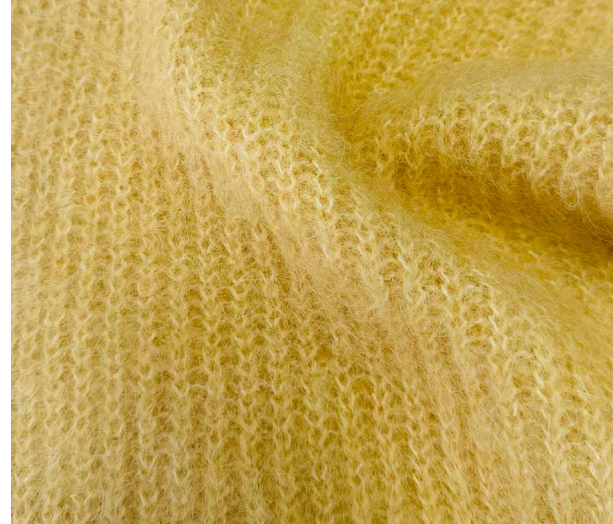
Lugang has established a transparent product chain for yak blend products.

The third-party international certification company, the DNV, has tracked the record of the entire production process from the fiber collection through yarn spinning.

Then consumer can scan the provided QR code on the garment tag to understand the traceability.

REPURPOSED WOOL/CASHMERE

REGAL has been certified as a recycle wool and cashmere supplier to apply relevant recycle animal fiber in his product.



UNDYED RECYCLE POLYESTER

Lugang used undyed recycle polyester raw material. This can not only reduce the water consumption during fiber dyeing, but also can reduce the pollution of chemical used in the dyeing process.

At the same time, it ensures quick response to the newly e-commerce purchasing model initiated by the online celebrities to meet the rapid market demand of continuous update of new product.

RESPONSIBLE WOOL / ALPACA /

MOHAIR

Progressive methods of land management are practiced on farms, protecting soil health, biodiversity and native species. Meanwhile, the social welfare, working conditions and health/safety of workers is addressed. Only products with 100% certified wool / alpaca / mohair may carry the RWS/RAS/RMS logo.

REGAL has implemented the RWS / RAS / RMS certification in selected wool / alpaca / mohair fiber yarn.



CHECK THE LIST OF EXHIBITORS
AT THE JULY 2023 B2BS,
AND PRE-REGISTER ON OUR WEBSITE:

WWW.SPINEXPO.COM

B2B

SPINEXPO™ NEW YORK

11 & 12 JULY 2023

THE SUITE - METROPOLITAN PAVILION

123 WEST 18TH STREET - NEW YORK - NY 10011

9.00 AM TO 6.00 PM

SPINEXPO™ HONG KONG

19 & 20 JULY 2023

THE SPACE

2/F, D2 PLACE ONE - 9 CHEUNG YEE STREET - LAI CHI KOK, KOWLOON

10.00 AM TO 6.00 PM

DON'T MISS

SPINEXPO™ SHANGHAI

29-30-31 AUGUST 2023

WORLD EXPO EXHIBITION & CONVENTION CENTRE

THE LARGEST FOCUSED EXHIBITION
FOR YARNS, FIBRES, KNITWEAR AND KNITTED PRODUCTS

DISCOVER OUR TRENDS AND PRODUCTS ON:

WWW.SPINEXPLORE.COM