

# SPINEXPO™

## THE KEY DIRECTIONS

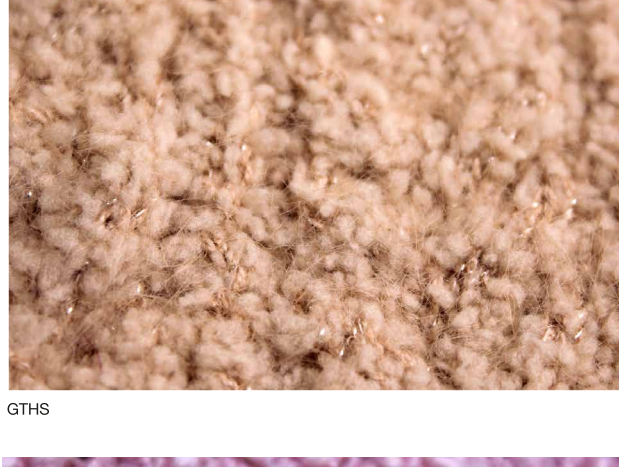
### FOR A/W 2024 YARNS

A return to traditional fall surfaces such as bespoke tweeded yarns and brushed and boiled knits create a cozy comfort.

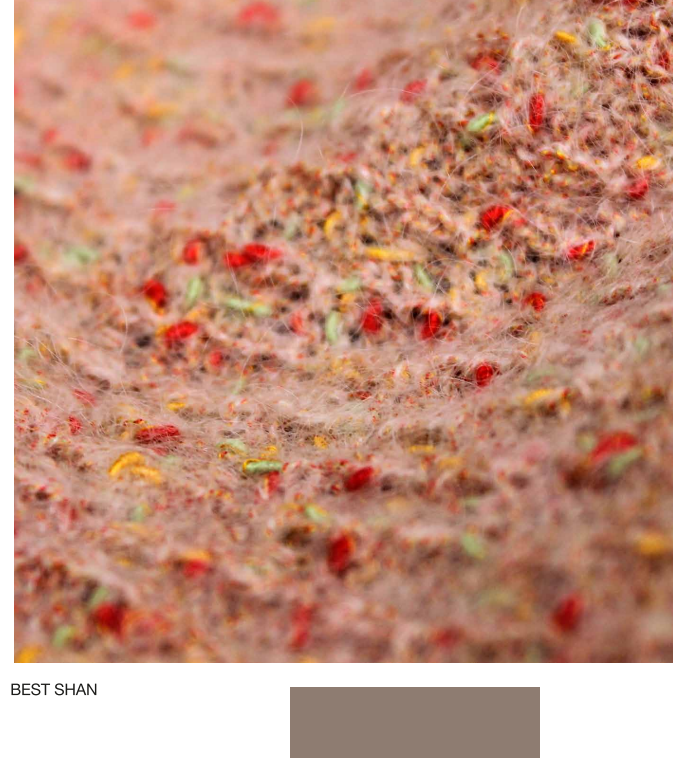


#### BOUCLE

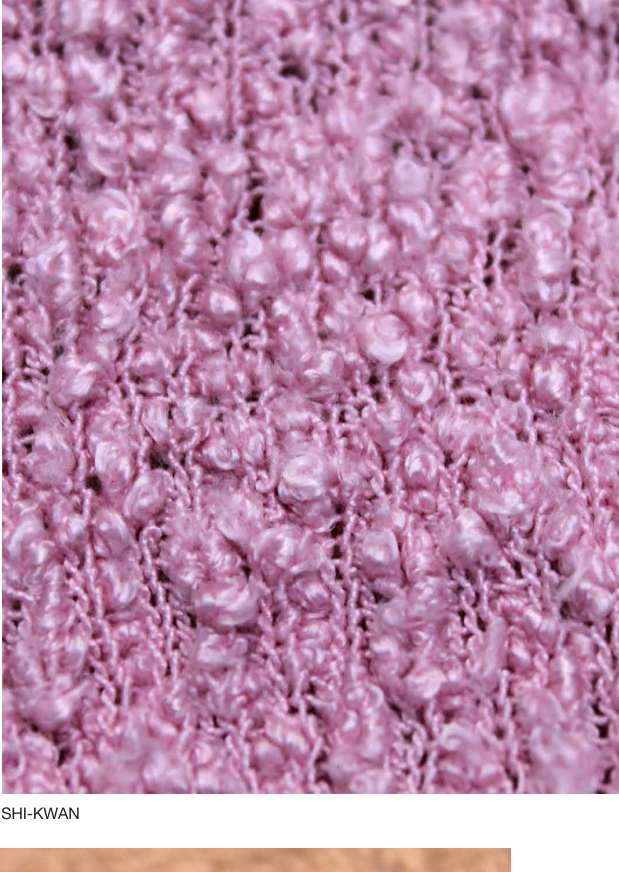
The boucle yarns this season tended towards a finer and sophisticated look compared to the more rustic iterations of seasons' past.



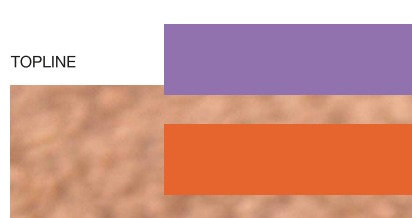
GTHS



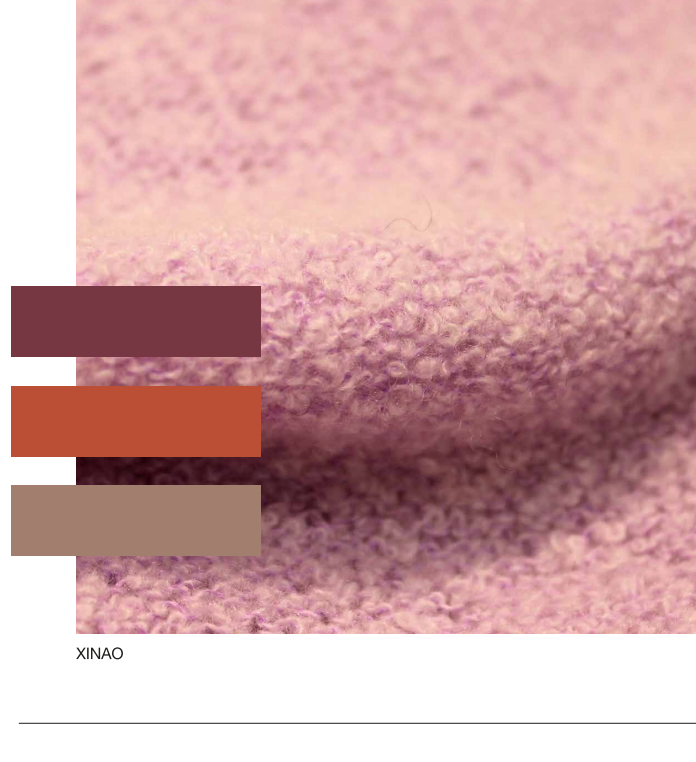
BEST SHAN



SHI-KWAN



TOPLINE



XINAO

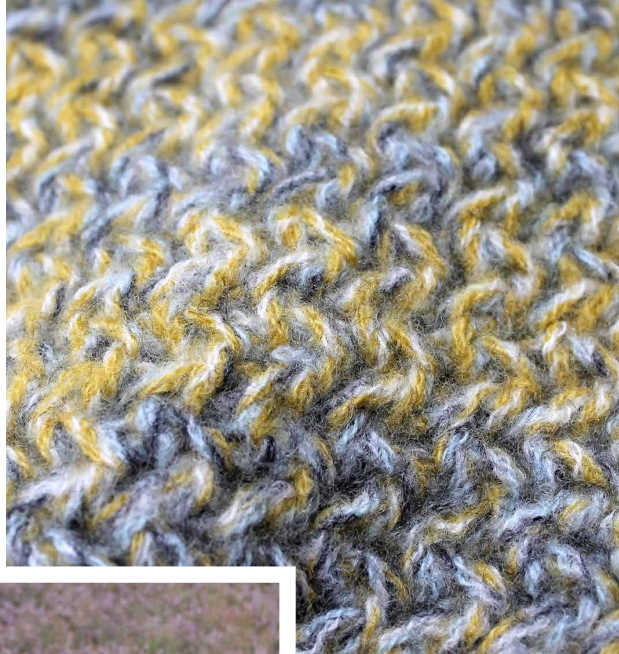
Some mills offered very fine and compact versions that recall the luxury of women's woven coats during the 50's and early 60's, making this a perfect yarn for layering and outerwear pieces.



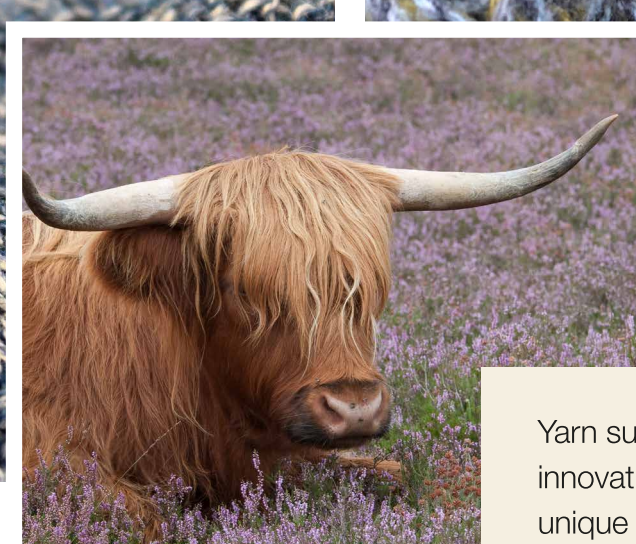
#### HEATHERED & MARLED



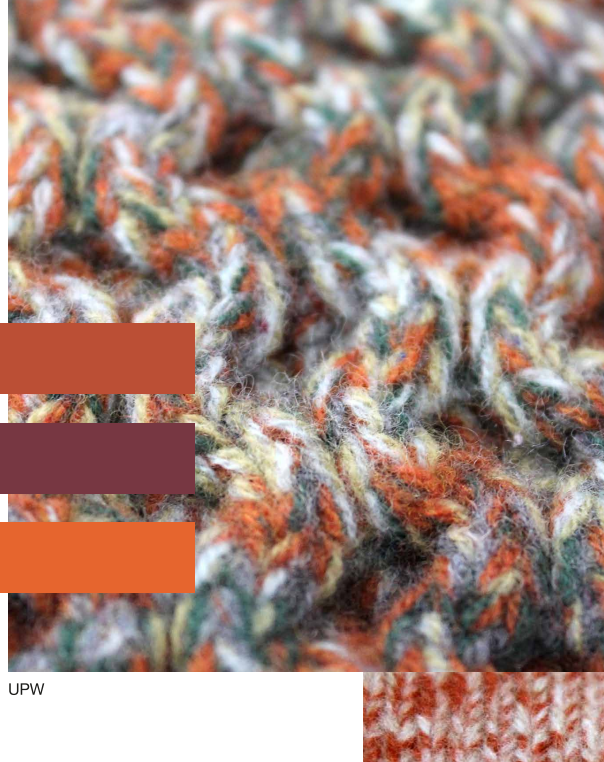
VERTEX



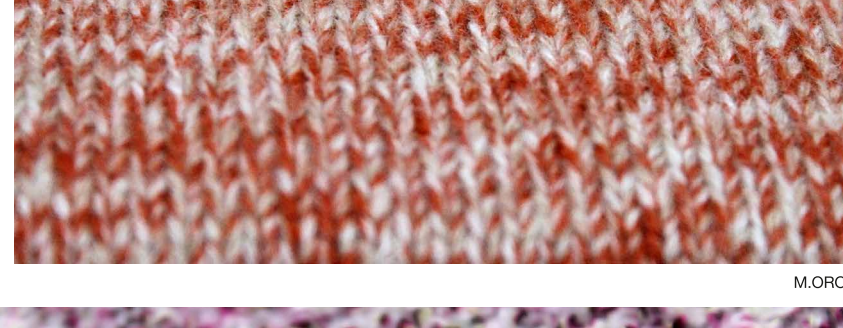
ZHONGDING



Yarn suppliers are exploring innovative ways to create unique textures and visual effects by using their basic yarn collections in different combinations and patterns. Heathered and marl effects are gaining popularity, offering a multi-colored and textured appearance to the yarns. The traditional Scottish highlands are evoked in these new tweed offerings, creating a perfect yarn for both men and women as many of the mills allow you to create your own colour combinations, allowing a bespoke mix for your brand.



UPW



YARNS &amp; COLORS

M.ORO



## SAVE THE DATES

SPINEXPO™ is a professional event specialising in the yarn and knitwear textile sectors, with applications in the areas of ready-to-wear, knitted accessories, weaving and active wear. With events on three continents, it showcases an exceptional selection of spinners, knitwear manufacturers and studios offering a “one-stop-shop” solution, from design to production, for small volumes and industrial-scale production.

CHANGE OF VENUE

SPINCLUB (B2B MEETING)

SPINEXPO™ PARIS

30 & 31 JANUARY 2024

BASTILLE DESIGN CENTER

74 BD RICHARD-LENOIR - 75011 PARIS - FRANCE

CHANGE OF VENUE

SPINCLUB (B2B MEETING)

SPINEXPO™ HONG KONG

21 & 22 FEBRUARY 2024

SHUN TAK EXHIBITION & EVENT SPACE

RM 402, 4/F, SHUN TAK CENTRE

200 CONNAUGHT ROAD CENTRAL - SHEUNG WAN, HONG KONG

42<sup>ND</sup> SESSION

SPINEXPO™ SHANGHAI

5-6-7 MARCH 2024

WORLD EXPO EXHIBITION & CONVENTION CENTER

1099 GUOZHAN RD, PUDONG - SHANGHAI - CHINA

Please visit our website SPINEXPLORE, dedicated to trends and products:

WWW.SPINEXPLORE.COM

CHECK OUR WEBSITE: WWW.SPINEXPO.COM