



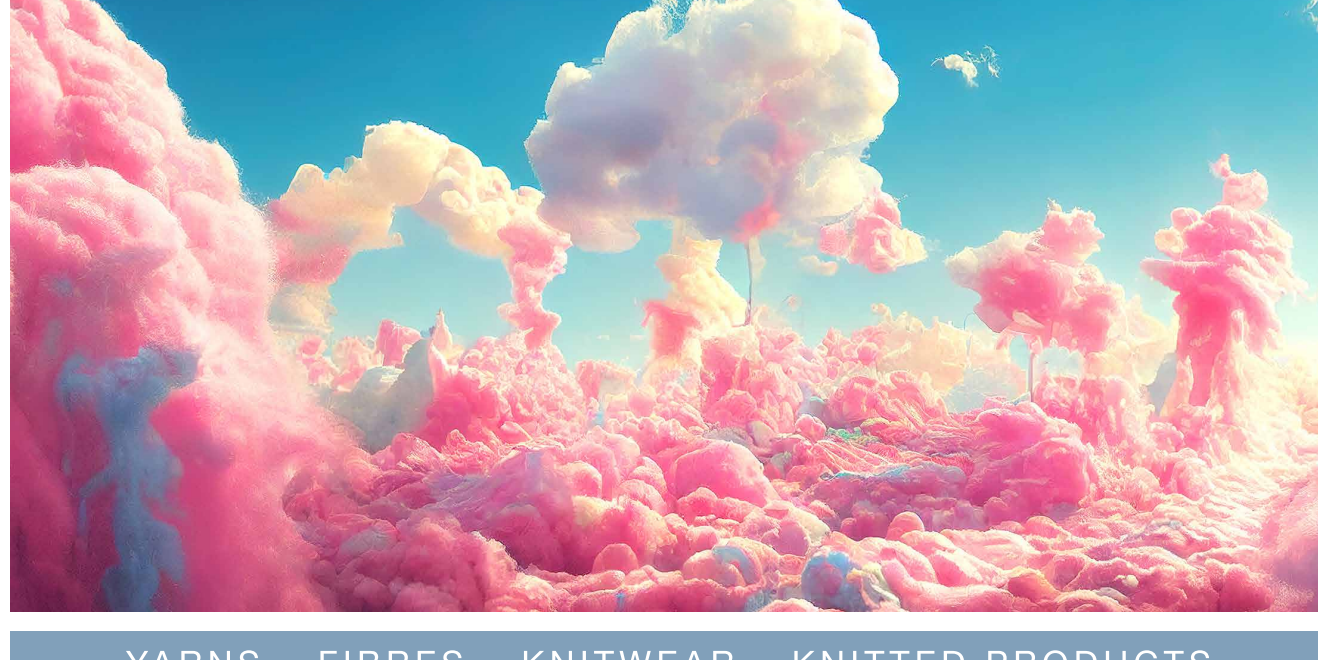
HONG KONG - NEW YORK - PARIS - SHANGHAI

SAVE THE DATES

SPINEXPO™ PARIS B2B

30 & 31 JANUARY 2024

BASTILLE DESIGN CENTER



YARNS - FIBRES - KNITWEAR - KNITTED PRODUCTS

SECOND LIFE

SIGNATURE FOR PLEASURE

THE SECOND FOCUS OF OUR "REBELLION" THEME

SPRING/SUMMER 2025



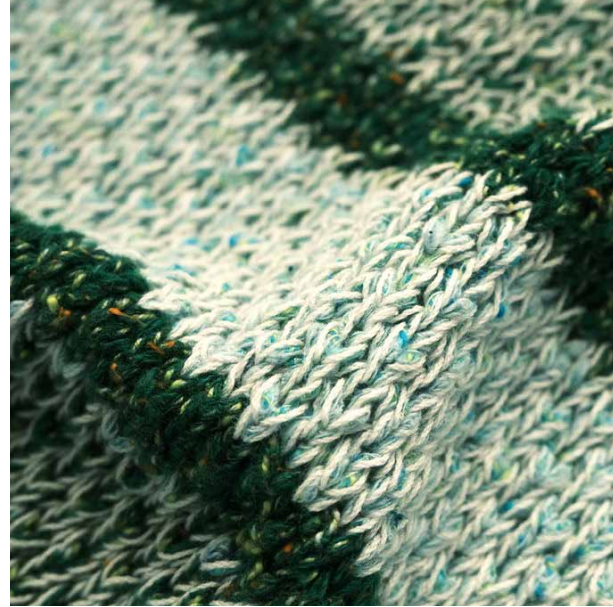
In response to a lack of visibility of the future and a rejection of normality,
an illusory world inspired by the metaverse, a desire for glamour inspired
by the world where stars and celebrities turn dreams into reality is taking shape.
A direction where a sense of lack of freedom and anxiety
in the face of a changing world drives us
to take refuge in a creative expression that doesn't shy away from standards,
based on decorative and elaborate materials.

PROPOSALS FROM OUR EXHIBITORS



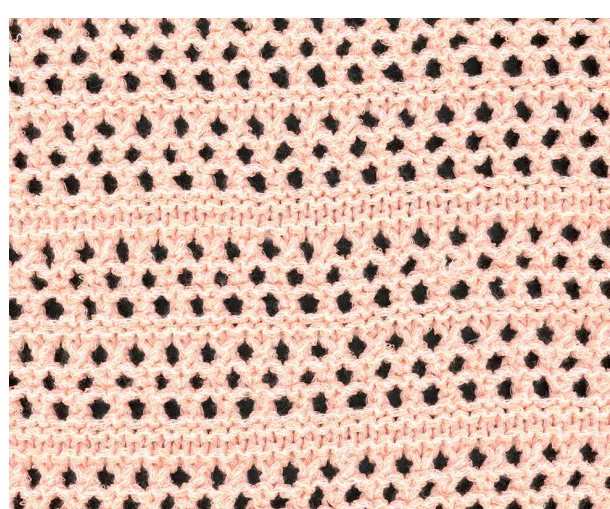
SHI-KWAN's VENUS is a yarn made from 74% environmentally-friendly Ecijilin viscose and 26% metallic; the luxurious yarn resulting from this blend creates the perfect optical illusion for a futuristic, technological style, with a texture that is light yet firm. As for **CREMONA**, 80% Ecijilin viscose 20% metallic, the delicacy of its sheen is due to the fact that the viscose is skilfully wrapped in ultra-fine metallic sequins. Careful polishing gives the yarn an elegant sheen. The yarn's excellent texture makes the knit or fabric less likely to wrinkle, keeping it smooth and clean.

For **ALIDA**, by **YARNS & COLORS**, a 100% polyester, brilliant sequins refresh the yarn, which has a luxurious feel and an elegant visual appearance. This yarn can be knitted with other yarns. Stock service in many colors. **LIDO**, 88% viscose 10% metal and 2% nylon, the lightness it brings to a fresh luxury knit that doesn't stick to the skin and recalls the iridescence of the galactic world.

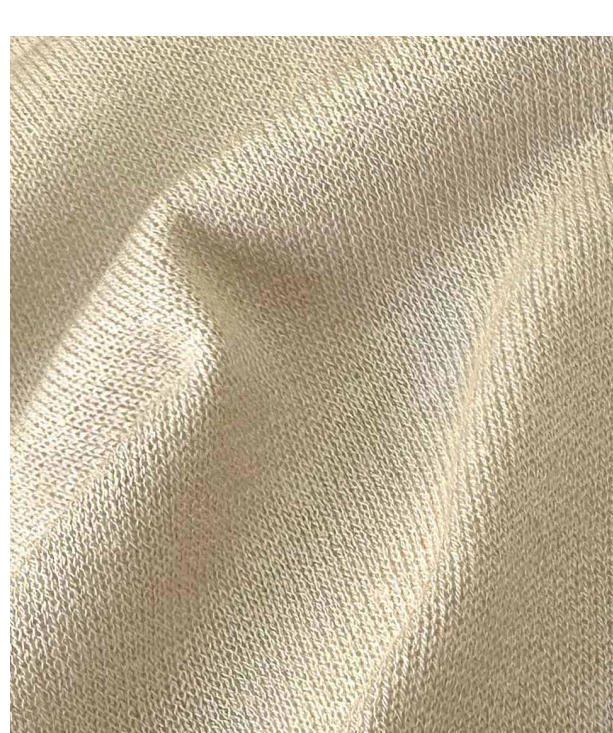


CAMELOT by **UPW** is made from silk bourrette, giving the yarn speckled tones and a refreshing feel. **ELISE** is a soft, sophisticated yarn made from Doolsi® silk, a mulberry silk created using a process that preserves the life of the chrysalis. This Doolsi® silk is blended with Lenzing's X Refibra Ecovero fiber, an environmentally-friendly viscose. The yarn is machine-washable.

SHILEAD offers WRW-XLD 526, 62% Polyester 38% BCI Cotton. The luminous polyester filaments embedded in the cotton mesh absorb light and glow slightly in the dark, creating a unique visual effect.



XINFANG also uses Doolsi® silk blended with 90% Tencel® Lyocel from Lenzing for its **KARI** yarn. Doolsi® silk is a new-generation silk which, compared with traditional silk, has been improved using MMT technology, eliminating the refining and degumming processes while retaining over 20% of the silk gum content. The yarn contains various beneficial amino acids, is machine-washable and easy to care for. What's more, during the supply process, the silk cocoons are carefully opened to remove the pupae, then stored in a sterile environment to ensure the survival and reproduction of the silkworms.



CONSINEE offers a yarn composed of 85% silk and 15% cashmere high twist for the creation of **KASGAR TWIST**, a yarn with a dry feel, for a slippery, delicate knit. **SAMARKAND**, 85% silk / 15% cashmere, combines the luster and fall of mulberry silk with the delicate feel of cashmere.



PANDA, a **HUAJIANA** yarn, 55% bamboo 40% acetate and 5% cashmere, is grade 5-A anti-bacterial, fresh and pleasant to the touch. Rayon fiber is derived from bamboo and can degrade in a totally natural way. Acetate is derived from wood, has good density and is silky, skin-friendly.

DON'T MISS

SPINEXPO™ HONG KONG

21 & 22 FEBRUARY 2024

SHUN TAK EXHIBITION & EVENT SPACE

RM 402, 4/F, SHUN TAK CENTRE

200 CONNAUGHT ROAD CENTRAL - SHEUNG WAN, HONG KONG

42ND SESSION

SPINEXPO™ SHANGHAI

5-6-7 MARCH 2024

WORLD EXPO EXHIBITION & CONVENTION CENTRE

THE LARGEST FOCUSED EXHIBITION
FOR YARNS, FIBRES, KNITWEAR AND KNITTED PRODUCTS

CHECK THE EXHIBITORS' LISTS & PREREGISTER

WWW.SPINEXPO.COM