

# SPINEXPO™

## THE KEY DIRECTIONS

### FOR S/S 2025 YARNS

FIBRES - YARNS - KNITWEAR - CIRCULAR KNIT - HOSIERY



## SAVE THE DATES

AUTUMN WINTER 2025-26 COLLECTIONS

### SPINCLUBS

#### PARIS

2 & 3 JULY 2024

BASTILLE DESIGN CENTER

74 BD RICHARD-LENOIR - 75011 PARIS - FRANCE

#### NEW YORK

9 & 10 JULY 2024

"THE SUITE" METROPOLITAN PAVILION

123 WEST 18<sup>TH</sup> STREET - NEW YORK - NY 10011

#### HONG KONG

17 & 18 JULY 2024

SHUN TAK EXHIBITION & EVENT SPACE

RM 402, 4/F, SHUN TAK CENTRE

200 CONNAUGHT ROAD CENTRAL - SHEUNG WAN, HONG KONG

### NEW SPINCLUB

#### LOS ANGELES

24-25-26 SEPTEMBER 2024

COOPER DESIGN CENTRE

860 SOUTH LOS ANGELES STREET, SUITE 1100 - LOS ANGELES CA 90014

HOURS OF OPENING FOR ALL SPINCLUBS: 9 A.M. TO 6 P.M.

### TRADE EXHIBITION

#### SHANGHAI

3-4-5 SEPTEMBER 2024

WORLD EXPO EXHIBITION & CONVENTION CENTER

1099 GUOZHAN RD, PUDONG - SHANGHAI - CHINA

HOURS OF OPENING: 9 A.M. TO 6 P.M. DAY 1&2, 9 A.M. TO 4 P.M. DAY 3

PLEASE NOTE THAT DAY 1 IS STRICTLY RESERVED TO BUYERS

# SPINEXPO™

## KEY DIRECTIONS

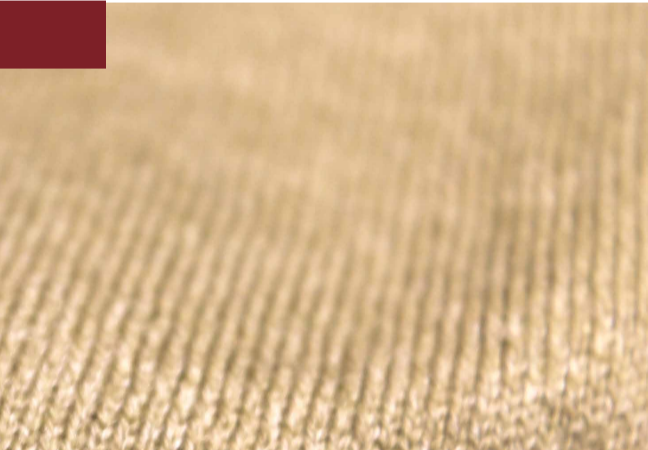
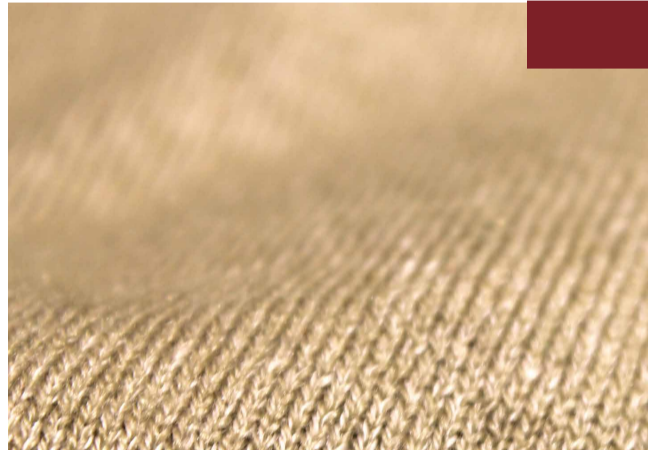
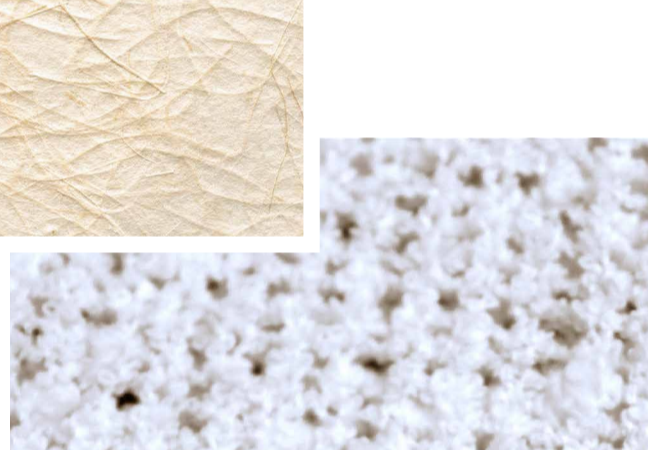
### FOR S/S 2025 YARNS

A new natural is discovered for spring as spinners explored sustainable fibres and new surface textures.

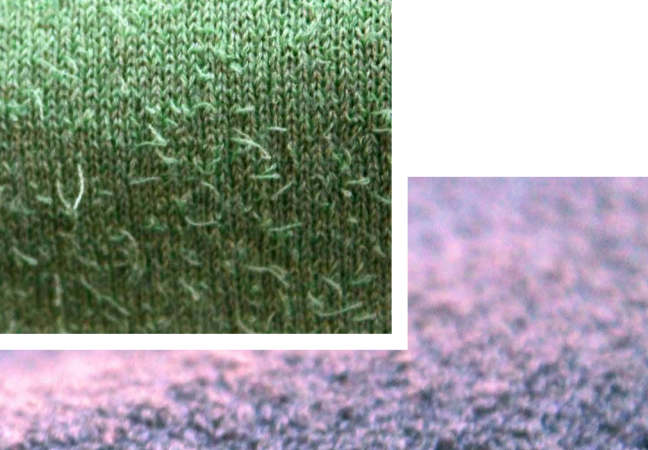
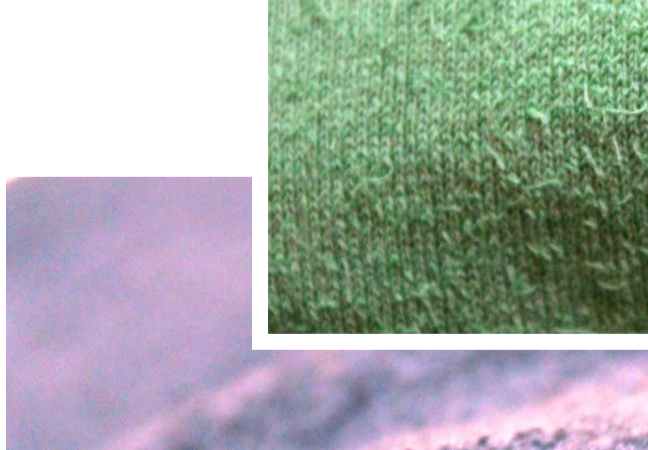
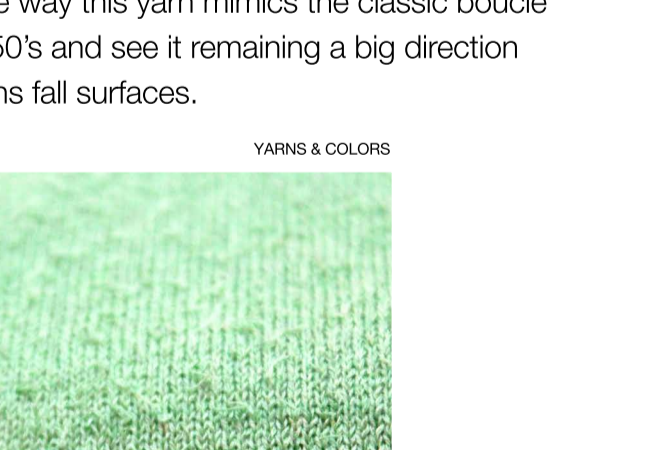
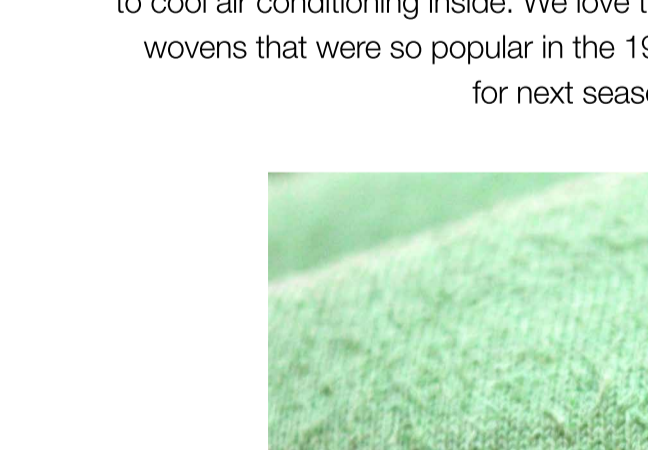
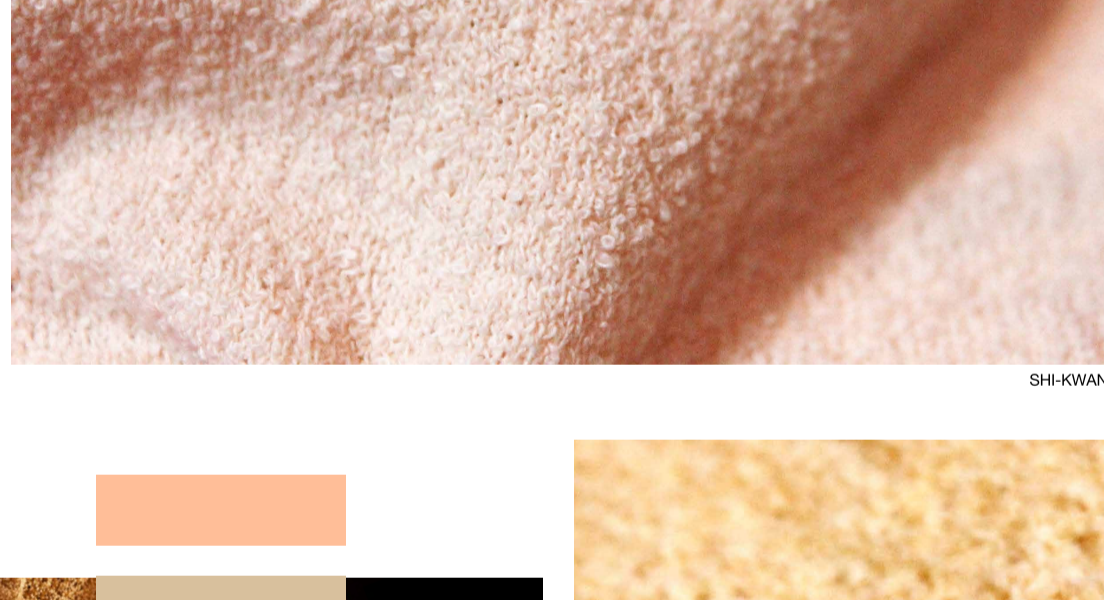
### CELLULOSE



Spinners this season have turned to cellulose fibers such as linen, hemp and paper to introduce cooling elements as well as sustainable aspects to their new products. Seen as a premium for the eco-conscious consumer, these yarns do especially well on the west coast of USA where there is moderate temperatures year round.



### MICRO TEXTURE



PREREGISTRATION IS MANDATORY

CHECK OUR WEBSITE: [WWW.SPINEXPO.COM](http://WWW.SPINEXPO.COM)