



HONG KONG - LOS ANGELES - NEW YORK - PARIS - SHANGHAI

SPINEXPO™ THE KEY DIRECTIONS FOR S/S 2025 YARNS

FIBRES - YARNS - KNITWEAR - CIRCULAR KNIT - HOSIERY



SAVE THE DATES

AUTUMN WINTER 2025-26 COLLECTIONS

SPINCLUBS

PARIS

2 & 3 JULY 2024

BASTILLE DESIGN CENTER

74 BD RICHARD-LENOIR - 75011 PARIS - FRANCE

NEW YORK

9 & 10 JULY 2024

"THE SUITE" METROPOLITAN PAVILION

123 WEST 18TH STREET - NEW YORK - NY 10011

HONG KONG

17 & 18 JULY 2024

SHUN TAK EXHIBITION & EVENT SPACE

RM 402, 4/F, SHUN TAK CENTRE

200 CONNAUGHT ROAD CENTRAL - SHEUNG WAN, HONG KONG

NEW SPINCLUB

LOS ANGELES

24-25-26 SEPTEMBER 2024

COOPER DESIGN CENTRE

860 SOUTH LOS ANGELES STREET, SUITE 1100 - LOS ANGELES CA 90014

HOURS OF OPENING FOR ALL SPINCLUBS: 9 A.M. TO 6 P.M.

TRADE EXHIBITION

SHANGHAI

3-4-5 SEPTEMBER 2024

WORLD EXPO EXHIBITION & CONVENTION CENTER

1099 GUOZHAN RD, PUDONG - SHANGHAI - CHINA

HOURS OF OPENING: 9 A.M. TO 6 P.M. DAY 1&2, 9 A.M. TO 4 P.M. DAY 3

PLEASE NOTE THAT DAY 1 IS STRICTLY RESERVED TO BUYERS

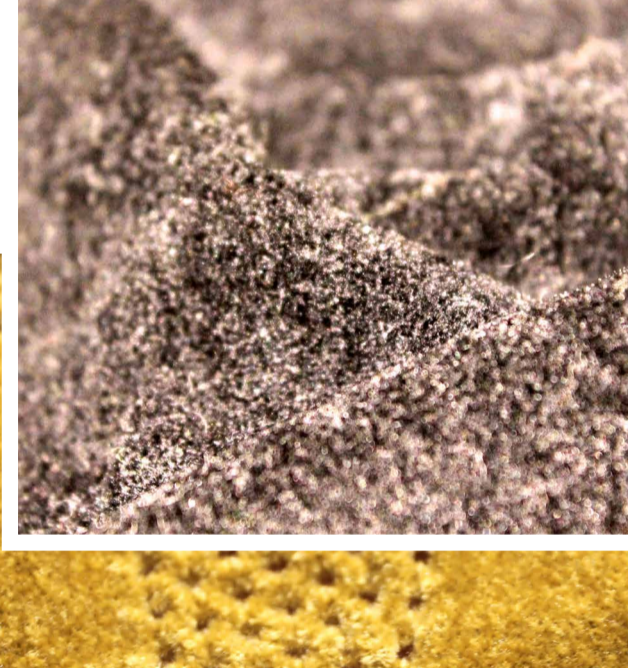
SPINEXPO™ KEY DIRECTIONS FOR S/S 2025 YARNS

A new natural is discovered for spring as spinners explored sustainable fibres and new surface textures.

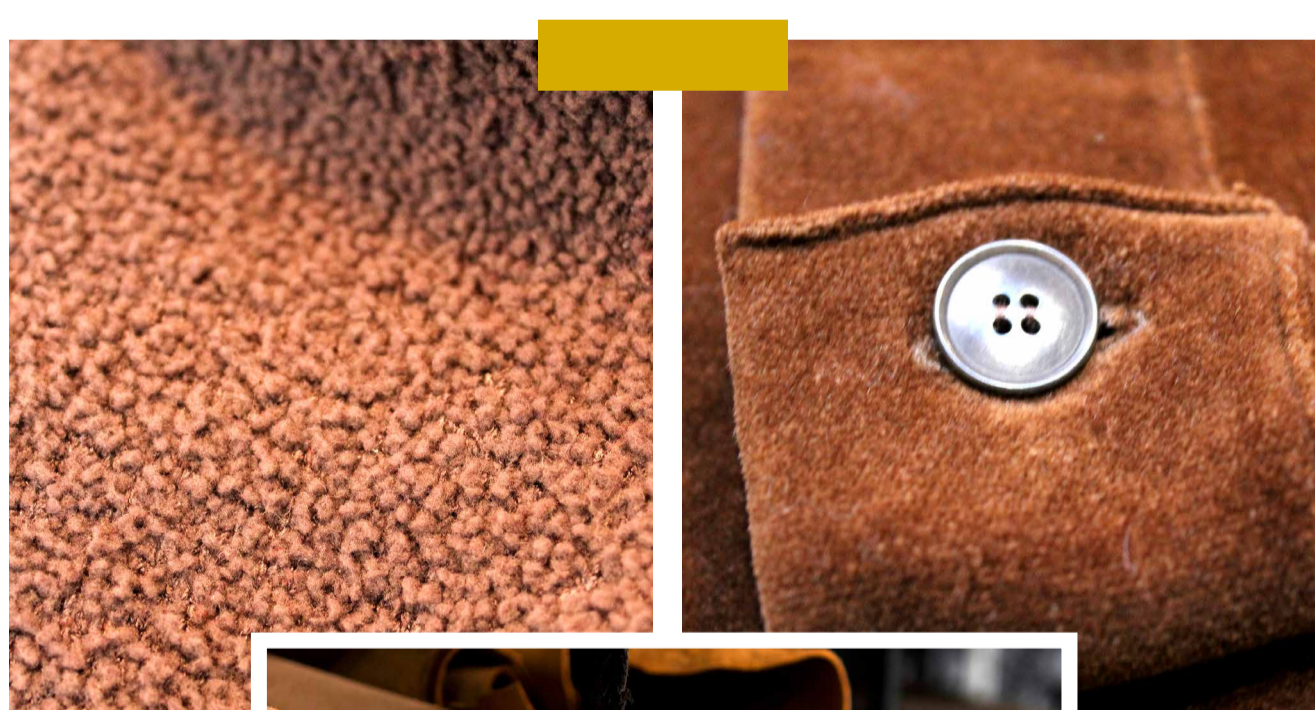
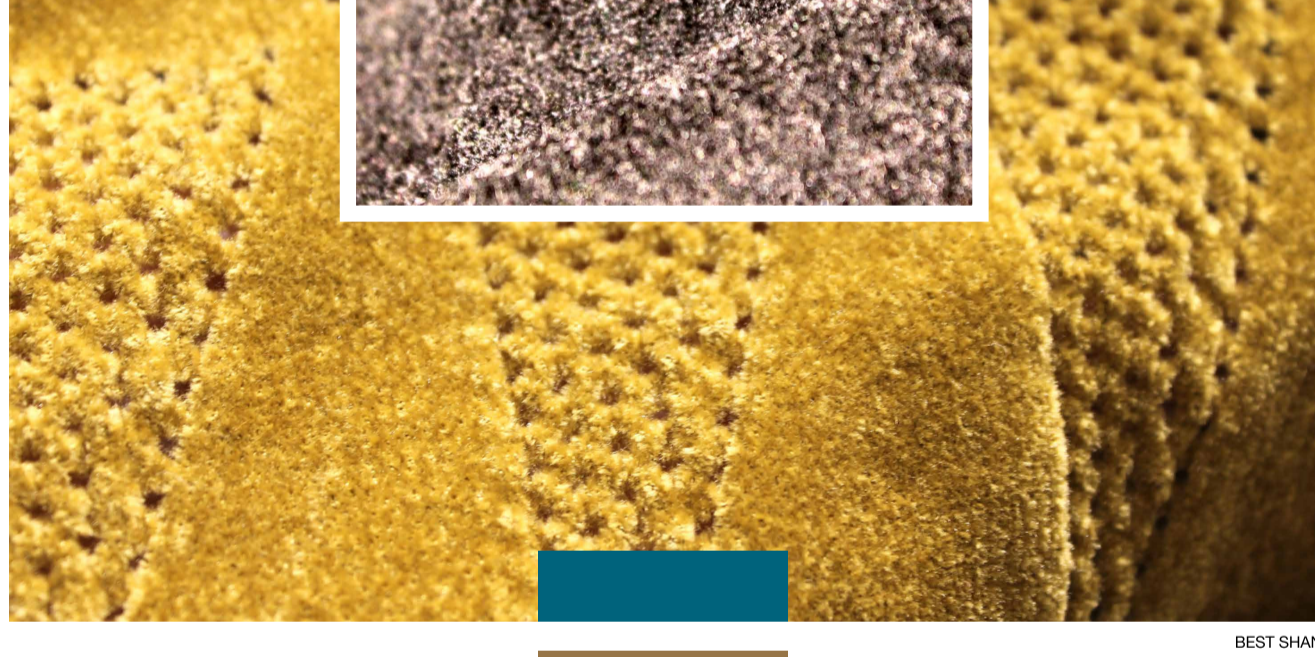
SOFTLY SUEDED

One of the most innovative directions we noticed was the sueded appearance of fine chenille yarns for spring as mills look to update their novelty yarns on new directions for spring. The natural colour palette lends further to this mock-leather look, while the hand-feel of these yarns remains soft and buttery.

SHI-KWAN



BEST SHAN

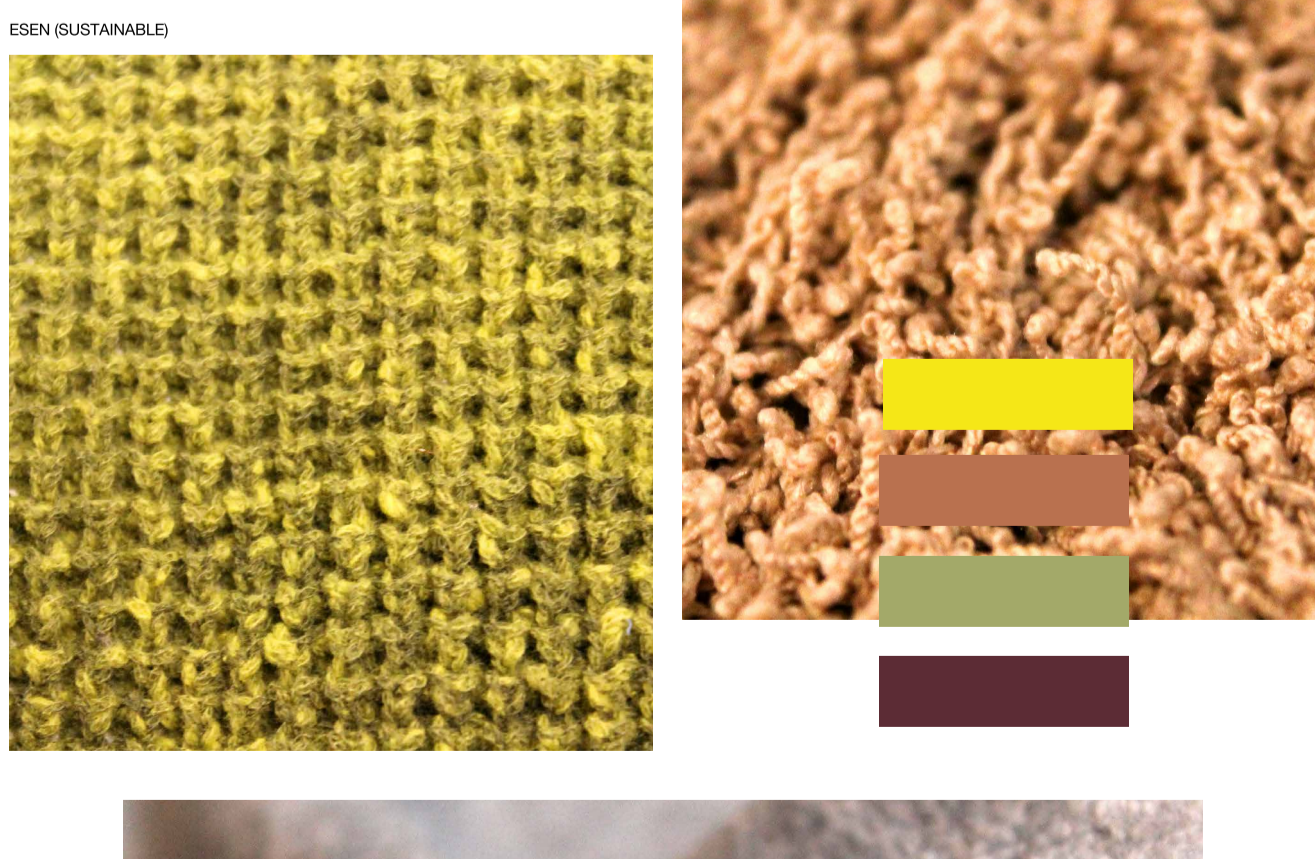


RAWTEX

YARNS & COLORS



REGAL



ESEN (SUSTAINABLE)



SHI-KWAN

PREREGISTRATION IS MANDATORY

CHECK OUR WEBSITE: WWW.SPINEXPO.COM