



HONG KONG - LOS ANGELES - NEW YORK - PARIS - SHANGHAI

SAVE THE DATES

SPINEXPO™ PRESENTS

SPINCLUB HONG KONG

17 & 18 JULY 2024

SHUN TAK EXHIBITION & EVENT SPACE

RM 402, 4/F, SHUN TAK CENTRE

200 CONNAUGHT ROAD CENTRAL - SHEUNG WAN, HONG KONG

HOURS OF OPENING: 9 A.M. TO 6 P.M.



YARNS - FIBRES - KNITWEAR - KNITTED PRODUCTS

**A MEETING PLACE FOR SPINNERS
AND KNITWEAR MANUFACTURERS AND THEIR CUSTOMERS**

PRE-REGISTRATION: WWW.SPINEXPO.COM

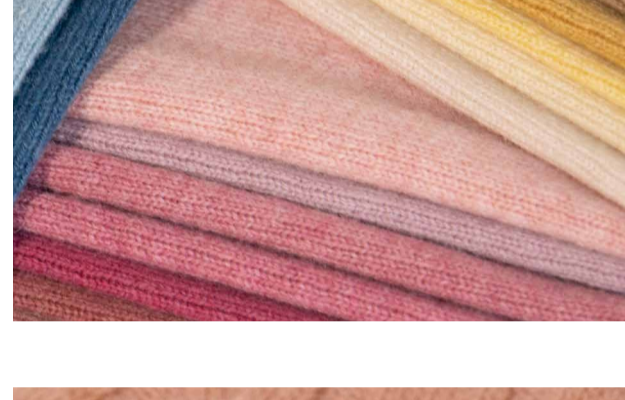
Open to customers only. Suppliers are not invited.



DEVELOPMENT DIRECTION ON AW25-26 SPINNERS PRODUCTS

XINAO

XINAO's new products are a true testament to its innovation.



XINAO uniquely combines rare animal fibers (such as vicuna hair, small camel wool, mohair, etc.) and other high-end natural fibers (such as mulberry silk) with wool and cashmere fibers in a more diversified way. This maintains the natural and environmental protection characteristics of yarn, providing more diverse choices for high-end clothing raw materials.

Examples of these exciting and unique new articles are as below.

2/15 Nm & 2/26 Nm WOOLPACA:

50% extra fine merino wool,

50% baby alpaca

2/16 Nm SWEETIE: 55% extra fine merino wool, 30% mohair,

15% mulberry silk

2/26 Nm RETRO: 40% ultrafine merino wool, 45% camel, 15% mulberry silk

2/18 Nm & 2/26 Nm DUKE:

70% ultrafine merino wool,

20% mulberry silk, 10% cashmere

XINAO is deeply committed to sustainability and is actively increasing the combinations of natural fibers such as wool and cashmere with environmentally friendly materials (such as recycled nylon, recycled polyester, degradable chemical fiber, etc.) to ensure that the yarn is sustainable and environmentally friendly.

Examples of these sustainable new articles are below.

2/16 Nm TENDER: 65% extra fine merino wool, 20% recycled nylon, 15% mohair

XINAO integrates the concept of sustainable development into the yarn production process and strictly abides by the GRS standard to reuse wool and cashmere fiber before or after consumption. XINAO will keep the original color and performance of recycled fiber to ensure the normal wear performance of the product, reducing carbon emissions and pollutant emissions in the dyeing process and primary processing production process.

Examples of new articles are below.

2/18 Nm REMORE: 90% recycled merino wool, 10% recycled cashmere

2/15 Nm & 2/26 Nm RENEW: 55% RWS extra fine merino wool, 35% Naia™ acetate, 10% recycled cashmere



ZHONGXIN

ZHONGXIN integrates different product advantages into the same product series.



1/3.9 NM, RWS Extra fine Merino Wool, 34% Recycled Nylon, 26% Cotton

Coarse needle RWS responsibility wool blend fancy yarn, with a delicate fabric style, clear layers, and a soft and sticky feel. The sustainable raw materials make the yarn more environmentally friendly and fit the wearer.

1/15 NM, 56% Nylon, 30% RWS Merino Wool, 10% Baby Alpaca, 4% Spandex

A new woollen-style product with a delicate texture and soft and elastic fabric, presenting a unique, stable, and introverted texture. The dynamic touch is considerate and gentle, and the size stability is excellent, wear-resistant, and not easily deformed.

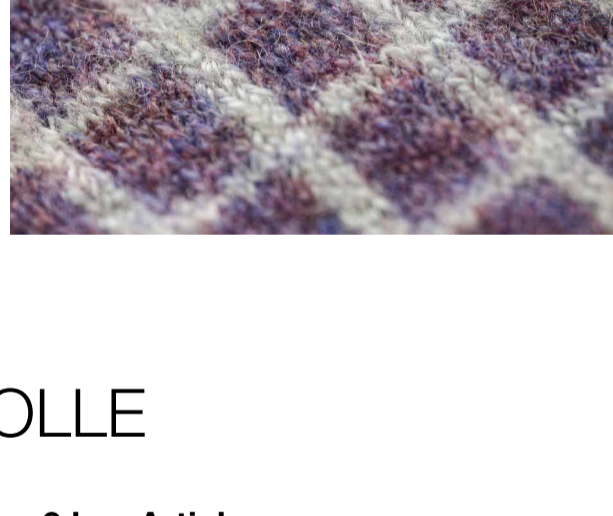
The new season's autumn and winter development theme (The Airport) fits the concept of "integration". By replicating the shuttle traffic of people in the airport, ZHONGXIN tries to capture the momentary coincidence of characters, integrate into time, and integrate into life.

Three new yarns to recommend:

1.7 NM, 91% Recycled Polyester,

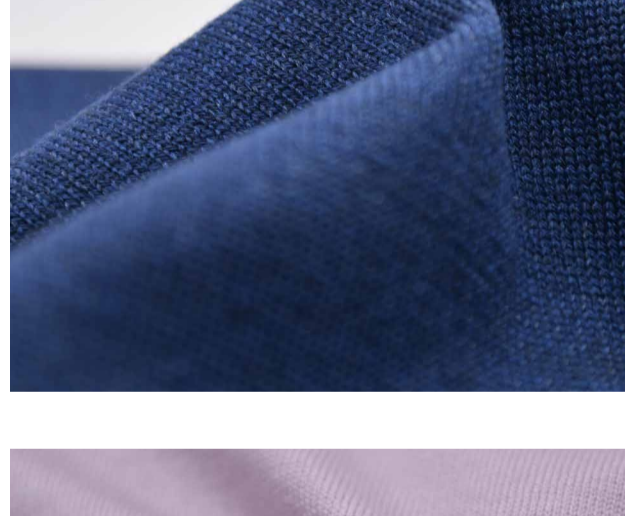
6% Recycled Nylon, 3% RWS Wool

The creative fusion of renewable fibers and environmentally responsible wool, with a unique color dot-like coarse needle style, creates a fluffy, lightweight, and soft fabric that feels close to nature. Colorful beads of different sizes are scattered among them, with large and small beads falling on the jade plate.



SÜDWOLLE

SÜDWOLLE promotes 3 key Articles



OTW® Marble 60/2 NM, 70% Merino Wool Superfine, Super 120'S, 17.5 mic,

anti-shrinkage, 20% Silk, 10% Cashmere

The exclusive OTW patented technology of SÜDWOLLE GROUP improves the anti-pilling level and makes the garment's surface more even. Three kinds of natural fibers make the fabric feel softer and more comfortable, and silk brings a soft luster and high-quality texture. A yarn suitable for fit, bottoming, and sweater.



Barrier Nm 2/54, 94% Merino Wool

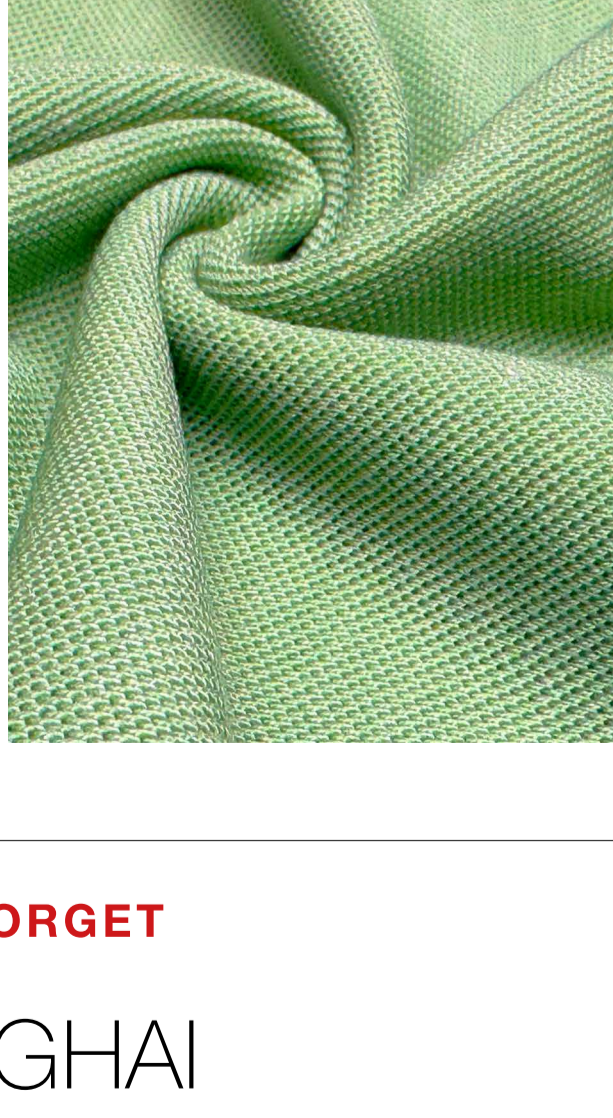
Superfine, 17.5 µ anti-shrinkage, 6% PBT

Barrier incorporates stretch polyester PBT fibers, making the yarn stronger and allowing for a tighter knit, as well as stretch and stretch recovery, making the garment more comfortable to wear and better shape retention.

Shoal Nm 60/1, 70% Merino wool superfine, 16.5mic, TEC, 30% Alginate

Shoal yarn is a new high-tech product developed and launched that combines Merino wool with alginate yarn. Significantly improved in terms of functionality, the yarn is flaming retardant, antibacterial, and antifungal, and at the same time, the yarn is eco-friendly, biodegradable, and biocompatible.

Alginate is a very distinctive fiber; it is made from 100% oceanic algae, without a carrier, and does not consume land resources. Alginate with antibacterial, Mold, flame retardant, high comfort, and other properties are the seaweed fiber's own characteristics, which do not require functional additions.



DON'T FORGET

SHANGHAI

3-4-5 SEPTEMBER 2024

WORLD EXPO EXHIBITION & CONVENTION CENTER

1099 GUOZHAN RD, PUDONG - SHANGHAI - CHINA

NEW SPINCLUB

LOS ANGELES

24-25-26 SEPTEMBER 2024

COOPER DESIGN CENTRE

860 SOUTH LOS ANGELES STREET, SUITE 1100 - LOS ANGELES CA 90014

PREREGISTRATION IS MANDATORY

CHECK OUR WEBSITE: WWW.SPINEXPO.COM