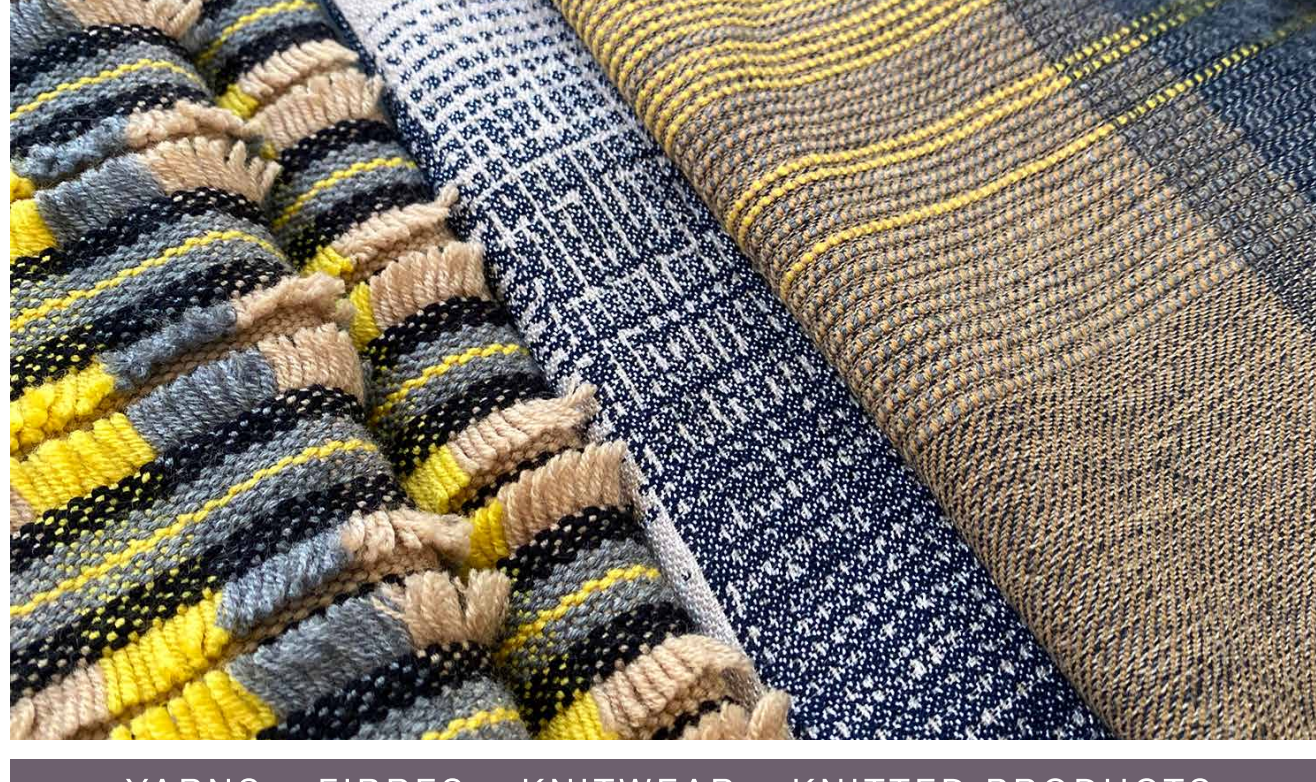




HONG KONG - LOS ANGELES - NEW YORK - PARIS - SHANGHAI

# SAVE THE DATES

**AUTUMN WINTER 2026-27 COLLECTIONS**



YARNS – FIBRES – KNITWEAR – KNITTED PRODUCTS

SPINEXPO™ is a select international exhibition in the spinning and knitwear sectors. All exhibiting companies have obtained international traceability labels, are partners in the recycling industry, and promote energy-saving in manufacturing processes.

SPINEXPO™ also hosts an extensive range of companies specializing in knitwear design and manufacture. Most of these exhibitors have their own collections and a Research and Development department capable of working directly with international brands.

## SPINCLUB NEW YORK

**8-9 JULY 2025**

"THE GALLERY & THE SUITE" METROPOLITAN PAVILION

123 WEST 18<sup>TH</sup> STREET - NEW YORK -NY 10011

## SPINCLUB LOS ANGELES

**15-16 JULY 2025**

COOPER DESIGN CENTRE

860 SOUTH LOS ANGELES STREET, SUITE 1100 - LOS ANGELES CA 90014

SPINCLUB New York and Los Angeles hosts a selected offer from the major Shanghai exhibitors and presents innovative trend areas thanks to a team of designers who are specialists in their technical skills and expertise. They interpret the trends showcased at the event using the yarns of the exhibiting companies. Special presentations from major exhibitors complete the display.

Pre-registration & list of exhibitors : [www.spinexpo.com](http://www.spinexpo.com)

### XINAO

**The fast-paced lifestyle and the evolving global consumer market are increasingly driving diverse demands on apparel fabric performance, propelling innovation in wool and cashmere yarns.**

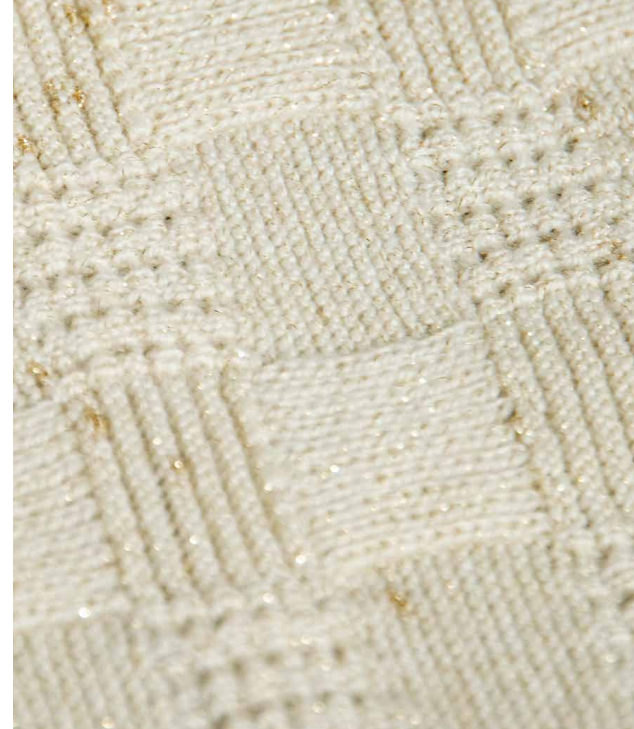
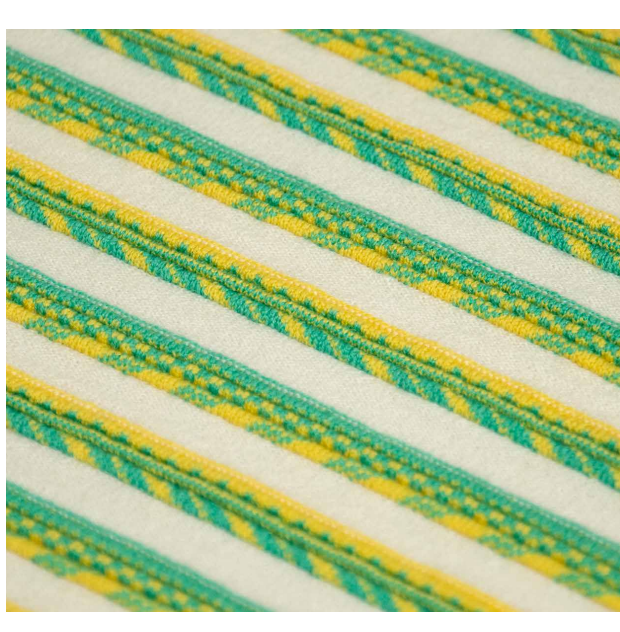
**Xinao stands at the forefront of sustainable yarn development.**

*By revolutionizing spinning technologies and integrating innovation into every fiber, Xinao creates high-performance, premium-quality wool and cashmere yarns.*

#### Wool Series

##### 1. EOS - Sport Elastic Wool

*Selected from Australian ultrafine Merino wool (17.5µ), this yarn undergoes shrink-resistant processing to modify the wool's scale layer. As a result, it achieves machine washability while maintaining a dry and comfortable hand feel. Utilizing advanced core - spinning technology with SORONA® high-elasticity filaments as the core, the fabric is endowed with excellent elasticity and elastic recovery, allowing for free movement and a comfortable fit. It is ideally suited for sportswear and outdoor apparel.*



##### 2. ASTRAL - Gold Bean Yarn

*Combining Australian ultrafine Merino wool (17.5µ) with metallic threads, this yarn creates a unique appearance with gold threads forming knotted patterns on the woolen yarn. The finished garment is soft and fluffy, with a delicate and skin-friendly texture. The addition of metallic threads adds a fashionable and elegant flair. It feels soft against the skin without being scratchy. Under sunlight or artificial light, it sparkles with a starry effect, combining elegance, comfort, and an exceptional hand feel.*

#### Cashmere Series

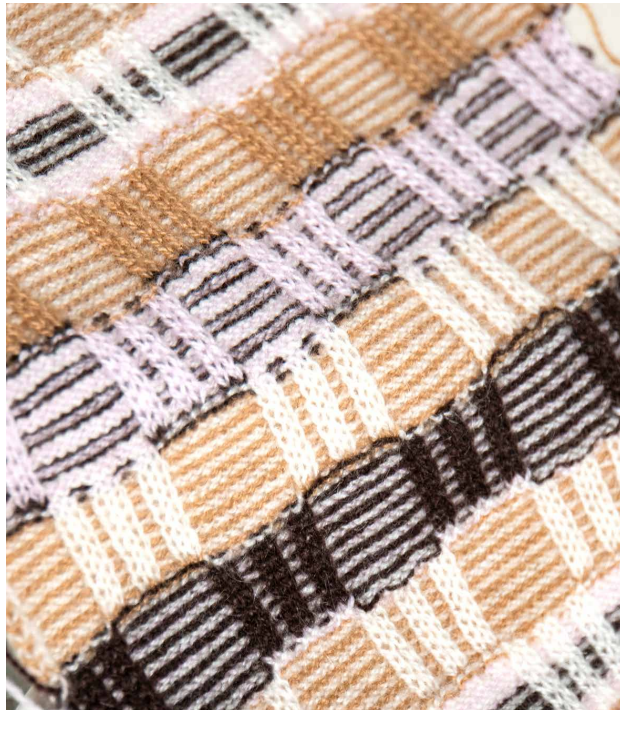
##### 1. FANCY CLOUD

*Made from 100% cashmere, this yarn is spun by mixing fibers of different colors to create a natural heathered or speckled effect. Visually, it appears more lively than single-dyed yarns. The yarn surface, with its color variations, presents a slightly uneven texture, resulting in a more textured fabric appearance.*



##### 2. SUBLIME

*Selected from Australian ultrafine Merino wool (17.5µ), this yarn is treated with the Basolan processes soften the wool scales, enhancing its dye-absorbing capacity. This results in a fuller luster while retaining the wool's natural elasticity and comfort. The hollow and elastic nature of mohair fibers, when combined with wool and cashmere, creates a lofty and lightweight yarn. The yarn also has strong moisture-wicking.*



**DON'T FORGET THE TRADE EXHIBITION**

## SPINEXPO™ SHANGHAI

**19-20-21 AUGUST 2025**

WORLD EXPO EXHIBITION & CONVENTION CENTER

1099 GUOZHAN RD, PUDONG - SHANGHAI - CHINA

**An extensive offer from the spinning and knitwear industry  
180 exhibitors  
Multiple trend zones**

**PREREGISTRATION IS MANDATORY**

**CHECK OUR WEBSITE: [WWW.SPINEXPO.COM](http://WWW.SPINEXPO.COM)**