



SPINEXPLORE

SPINEXPO™ PARIS

*PRESENTING THE AUTUMN/WINTER 2018 COLLECTIONS*

3-4-5 JULY 2017

AT THE CITÉ DE LA MODE & DU DESIGN  
34 QUAI D'AUSTERLITZ 75013 PARIS



SPINEXPO

# UPW

## Genuine Stock Support

All of our yarns, in all of our colours, are always held in stock.

It is quite a simple concept, backed up with a massive inventory. It allows you to be super flexible in what you order, super fast and efficient with both sampling and bulk, and with minimums being just one cone you can afford to be creative with colour too.

## StockStore

Select, check and buy our entire collection online.

It is a whole new way to help you manage your sampling requirements, in real-time.

Stand A17 - SPINEXPO Paris

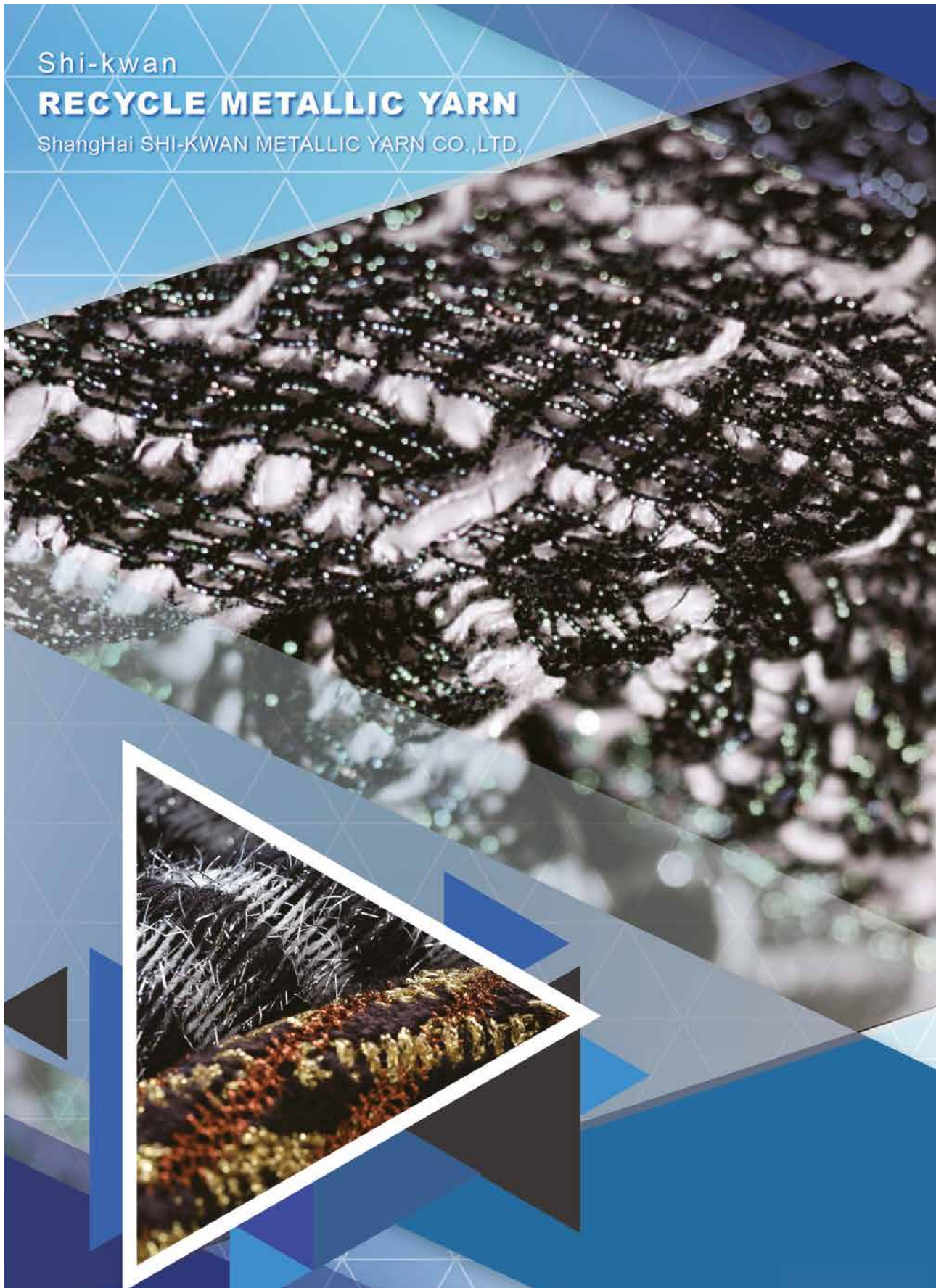
[www.upwhk.com](http://www.upwhk.com)



Shi-kwan

# RECYCLE METALLIC YARN

ShangHai SHI-KWAN METALLIC YARN CO.,LTD.



# ONE YARN TO CREATE A COLLECTION

*FIBRES ARE THE FOUNDATION OF TEXTILES AND THIS IS WHERE THE EVOLUTION OF A GARMENT BEGINS. NOT SURPRISINGLY, SPINNERS ARE LOOKING INCREASINGLY FOR NEW AND INNOVATIVE WAYS TO MANIPULATE FIBRE AS THEY WORK TO DEVELOP EXCITING NEW YARN COLLECTIONS THAT EMBRACE WELL BEING AND FUNCTIONALITY.*

We have reached a tipping point in the industry where the designer is retaking the role of creative director, utilising a wide variety of plain, core and perfect yarns that are well positioned in price and stock to allow efficient development and turnaround. These stock yarns are being used with increasingly innovative machinery to produce visually inspiring, fresh and creative garments.

Working with a single yarn or a single fabric and placing emphasis on fine yarn counts, beautiful straight core yarns, zero waste knitwear technology, accentuated colour combinations, placements and details all allow that yarn to be used by bespoke boutique brands, through to fast fashion brands alike. This new direction for the coming season allows one yarn to be utilized to accentuate a collection throughout all seasons in a wide variety of ways, creating clearer and more focussed direction for buyers who currently face uncertainty.

The driving force of knitwear collections is more about natural or synthetic fibres, used independently or together, to create modern garments with simple composition, with function and increased sophistication, a result where sensuality is the core of the product.

The influence of activewear has evolved but at the same time has faded. It is remembered for what it brought to more classical knitwear, a focus on simple construction, higher quality fibres and less waste in production. Sustainability, intelligent recycling, social responsibility are messages that are permanently integrated and essential to how we do business going forward. This is witnessed through all the collections from our Asian spinners.

The development challenge today is focussed on dyeing and finishing processes as well as plant dyed effects. To create more sustainable solutions to go forward, numerous yarns including cashmere are now available in plant dyed palettes.

As fashion progresses towards usability and functionality, traditional knitwear as we know it is already in the process of transforming itself. While world suppliers of natural fibres such as wools, cottons, silks and linens struggle with supply and demand of the markets as well as the effects of nature itself, manmade fibres are starting to present themselves as an attractive option due to their durability, added functionality, and surprising sustainable solutions. Not only are yarns improving constantly, the technology we use to manufacture garments is also challenging our imagination in terms of automation and efficiency.

**SPINEXPO™ is proud to partner with new fibre innovators, such as Invista, Aquafil, The Woolmark Company and technical spinners such as; Filix, Formosa, Hywell and Polyace, whose fibres are already widely used in many of our spinners' collections.**



# REVERSIBILITY

**D**isarray and chaos in our modern society and cultures has been the front page and lifeblood of our recent social geography and has inspired SPINEXPO™ for its Spring/Summer 2018 trends, as displayed this past season. Lack of global direction, the challenges of uncertainty and the intoxicating effects of false and fabricated information, propagated by second-level media, has hugely influenced and affected our everyday lives. It has left the fashion world in a state of disarray and a feeling of deconstruction.

Radically opposite results in recent European elections have underlined the fracture brought by the challenge of facing the changes inherent to the start of the 21<sup>st</sup> century, with US and UK voting for a more protective and nationalistic environment and the remaining European countries wanting a stronger European alliance, targeting renewal and internationalisation.

Inspired by the mixed influences of populism and modernism in politics, and at the light of the recent poll results mixing inward and outward-looking attitudes, SPINEXPO™ chose to investigate the concept of 'Reversibility' that can be applied to textiles together with the study of extremes in attitudes and concepts.

SPINEXPLORE sees the future as not setting more trends, but as having the grit to define and role-model radical and potentially controversial ways of working in fashion, to question the conventions of the industry in relation to knowledge, production methods, practices and material use.

In the field of yarns and fibres, we are interested to study how man-made fibres cohabitate with natural fibres, how recycling helps propose innovation with new blends, how the combination of craft and organic growth with new technologies can revive and stimulate designers to boost their creativity.



# ENDURING

## CONTRAST BRINGS NORMALITY

Inspired by the pressure of change and what we understand from the metamorphic strata of the earth and the incalculable geological forces transforming mineral matter.

We take our inspiration from the folding patterns of hycernian processes, sedimentary fossilisation and other formative geological processes.

Clay and chalks provide intricate microscopic patterns of encrusted jagged crystals with contrasting layered patterns. Organic collides with digital, natural with man-made fibres. Marble and textured aspects are modernised by a range of soft stronger pastels and light matt iridescent metallics, creating layering of colours reflective of fossilised rock formations and the stratification of surface erosion.



Xinao by M.oh.k

14-1127 TCX  
DESERT MIST



16-3801 TCX  
OPAL GRAY



16-3205 TCX  
MAUVE SHADOWS



16-6008 TCX  
SEAGRASS



17-1019 TCX  
ELMWOOD



16-1412 TCX  
STUCCO



17-3906 TCX  
MINIMAL GRAY



18-3712 TCX  
PURPLE SAGE



17-1430 TCX  
PECAN BROWN



18-1404 TCX  
SPARROW





↓ Shi Kwan, Fashion Yarn by Bobble



↓ Hongye, Xinao, Winning by Bobble



↓ Hongye, Best Shan, Shi Kwan, Esquel, Consinee by Cassie Henderson



↓ Xinao, UPW by Xavier Brisoux



↓ Xinao, Easter, Zongxin, Hotta by Kemi Clark

---

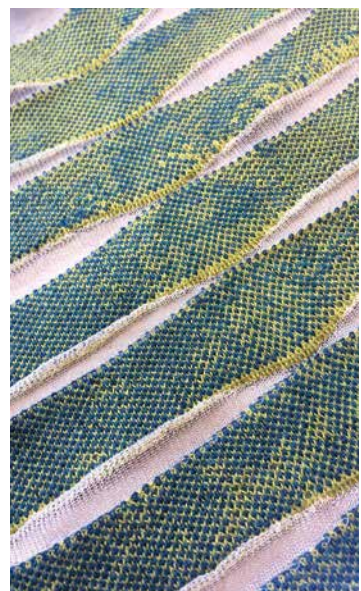
#### YARNS:

Space-dyed, uneven speckled effects, spray dyed, compressed yarns with blurred colour effects, coloured threads that transform and adapt with light. Stone, matt and other washed finishes, uneven nubby imperfect yarns, salt & pepper and marled effects.

Cotton, Lycra, fine wools, wool/polyester, silk, monofilaments, brushed effect and boiled wools, chunky chenille, fine boucle, mercerized wool + fleece, medium to fine cottons and blends.

#### KNITWEAR AND STITCHES:

We focus on the comparison and conflict of yarn material to show their incompatibility. Forces and pressure are the strong direction for this area. Multi-layered arrangements, double cloth, sheer overlays, physical pleats, cut away finishes, raw exposed edges, fading and tight stripe repeats, gathered or sparse, continuous lines broken by zones, reversibility, subtle textures, soft handles and ripples. Stitch work, lots of surface texture, glass beadings. Rough knits, stiffer, discoloured and dry handles



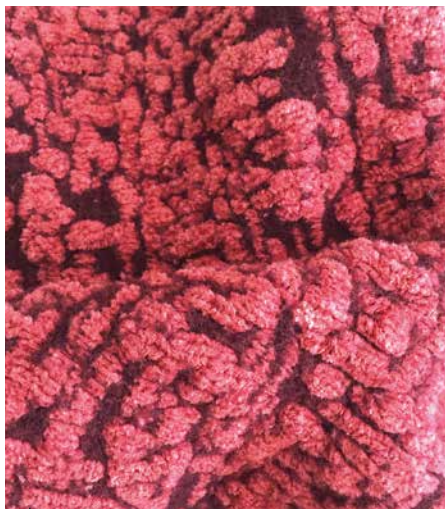
↓ Biella Yarn, Xinao, Winning by Bobble



# ERODING

## DECAY BRINGS MUTATION

**O**n a microscopic level decay does not mean death, conversely it brings rebirth when surrounding elements interact with each other in new ways, influenced by different forces. This change brings a fresh new look. The so-called 'perfect' becomes dull, and the decaying matter once referred to as imperfect will represent the best of perfection. We focus on the process of decay to display the changing appearance at each elemental stage and how this blends and relates to its surroundings.



Xinao, Shilead by Jinlong

16-1054 TCX  
SUNFLOWER



12-4301 TCX  
ALMOND MILK



18-0830 TCX  
BUTTERNUT



19-3217 TCX  
SHADOW PURPLE



16-1435 TCX  
CARNELIAN



19-5920 TCX  
PINENEEDLE



16-0639 TCX  
GOLDEN OLIVE



19-1656 TCX  
RIO RED



13-1016 TCX  
WHEAT



17-1340 TCX  
ADOBE







Best Leader, Xinao, Haoye by Kemi Clark



Fashion Yarn, Huafu, Shi Kwan, Orient Hongda, I-Sheen by Cassie Henderson



Shi Kwan, Xinnuo by Bobble



Xinao, Haoye, Biella Yarn by Kemi Clark



Zhongxin, Shilead, Shi Kwan, Winning, Kyototex by Natasha Holdgate

**YARNS:**

Wool above all, fine merino to chunky roving wools, light but bulky or fine bouclés, felted wools and nylons, thick wools mixed with finer counts, fleece with long hair mohair, feather yarns. Furry nep yarns and hairy yarns having a blister-like form or moss texture with a modern focus. A mixture and crossing of hairy, smooth, drape tape yarns. In contradiction, metallic, matt & shine iridescent viscose and silks; satins silks yarns, velvety and matt chenille; wool and silk, mercerised fibres and iridescent yarns for a coloured mother of pearl aspect, Tencel.

**KNITS AND STITCHES:**

Super bulky and super chunky knitwear, sculptural ribs & cables, ripple stitch; oversized proportions in padded wools. Multi construction knits. Jacquards, collapsed weave techniques, felting, irregular surfaces and soft handles; crushed surfaces creating decaying beauty, satins using stretchy input, high shine aspects and beadings. Smocking in knits, lace work, hairpin lace techniques, mesh stitches, patches of colours, strands, layers of multi-gauge yarns, combination of knit and fabric layers. Tucking, laying-in, e-wrapping textures with jacquards patterns, reversibility; layers of different yarns, cut through to reveal all layers. Burnt edged, fringes.



Best Leader, Xinao, Haoye by Kemi Clark



# INTERACTING

## TEMPERED FORCES BRING RESILIENCE AND BALANCE

Harmony and chaos have always functioned alongside each other, nature's great balancing act. The power of distortion to twist and change original appearance, transitioning from one extreme to another, paradoxically we achieve balance. We focus on the interaction and counteraction of power between elastic fibre and natural yarn to show relative balance when forces are applied or change; the relationship between a relaxed environment and the disarray of lands, inspiration from aerial photography and the differentiation of chaos and calm.



Sawada, Huafu by Bobble





↓ Huafu, Shi Kwan by Jinlong



↓ Sawada, Shi Kwan, Huafu by Bobble



↓ Hongda, Shilead, Xinao, Esquel, Shi Kwan by Kemi Clark



↓ Biella Yarn, Xinao by Natasha Holdgate



↓ Yarns & Colours, Huafu, Shilead, Shi-Kwan, Armonia by Kemi Clark



↓ Best Leader, Xinao, UPW by Natasha Holdgate

### YARNS:

Loose yarns with a rug feel, uneven finish. Thick and thin yarns, elastic blends, fine wools, cashmere, textured yarns; temperature modulation (Coolmax), water repellent processes (Aquafile), geometric patterns.

Merino, cashmere, mohair, metallic yarns. Plain yarns are important, all gauges, multiple colour options, subtle marls. Crazy fancy yarns, modern Chanel inspired yarns, block colours and bio fibres as a surface yarn. Transparent yarns.

### KNITS AND STITCHES:

Directional, fusion of colour; extra weft pattern work, tapestry techniques, tie-in distortions, double cloth geometrics; laying-in, multivariable, irregular stripping, experimenting with ripples, cables, moving ladders, reverse sides knits.

Entanglement, disruption, broken geometric patterns, confused lines, concave-convex abstract patterns.



↓ Xinao, Esquel, Sapiens by Kemi Clark



# COLLIDING

## CONTRADICTING FORCES BRING UNPREDICTABLE PATTERNS

**W**e study how natural forces oppose one another to transform their surroundings. Exothermic or endothermic reactions create inward and outward bursts of energy creating modern, psychedelic, and futuristic technological structures. We are inspired by the interaction of patterns and colours that can be found in pollution and how this and other waste related environmental challenges collide with our own existence.



Topline, Xinao, Hotta, Zixin, Biella Yarn, Erdos by Bobble

17-1723 TCX  
MALAGA



17-1316 TCX  
PORTABELLIE



19-4340 TCX  
LYONS' BLUE



14-1311 TCX  
EVENING SAND



18-1230 TCX  
COCONUT SHELL



19-3906 TCX  
DARK SHADOW



18-4522 TCX  
COLONIAL BLUE



19-2520 TCX  
POTENT PURPLE



18-1616 TCX  
ROAN ROUGE



19-3842 TCX  
DEEP WISTERIA





Winning, Shi Kwan, Huaifu, Shilead  
by Cassie Henderson



Shi Kwan, Huaifu, Xinao, Fashion Yarn  
by Cassie Henderson



Xinao by M.oh.k



Shilead, Yarns & Colors by M.oh.k



Xinnuo, HF by Südwole, Shilead, Best Shan by M.oh.k

## YARNS:

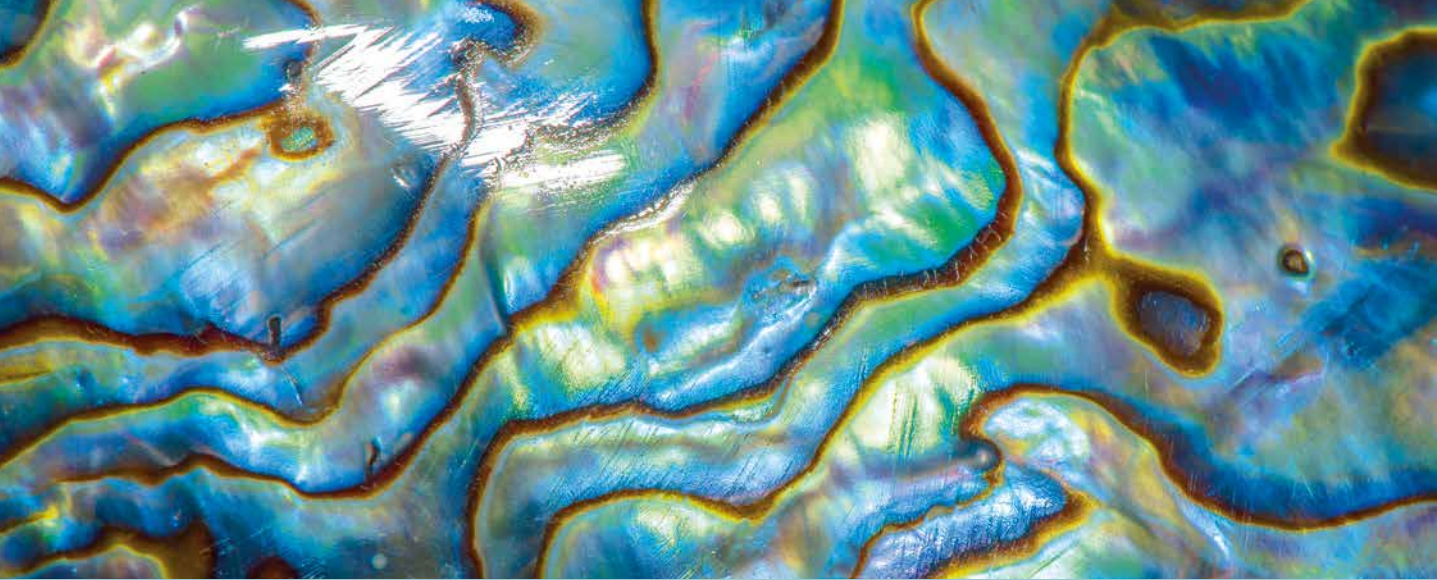
Multi coloured and mixed textured yarns, spongy and furry yarns, felted finishing. Cord yarns, mohair, cashmere; fine and felted chenille, covered yarns, boucle and brushed tech yarns; chunky and fancy blends coloured wools; metallic aspect yarns.

## KNITWEAR AND STITCHES:

Knot knitting techniques, chunky knit style, stretchy and strong. Experimental knits, play on varying yarn thickness. Encasing looks, protective, making knitwear "tough" using luxury yarns with incorporation of metal works  
 Designs inspired from rugs, cut yarn techniques, wall hangings, paint-peel like effects. Loose yarns and fringes, patchworks and furry effects; kinetic, global strain, explosive new beginning; large scale structures, highly textural, modern tweeds, elongated floats; unpredictable patterns, digital disruptions, crafty elements, thick & thin yarns, loops, embellishments.  
 Gradations, mixed patterns, organized randomness, broken patterns; explosion of colours and wavy patterns, irregular; rubbish waste, interwoven, different float lengths for a smooth and delicate pattern effect



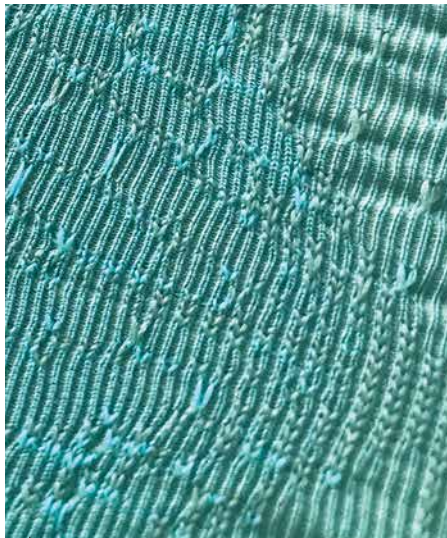
Xinnuo, Biella Yarn, Hotta by Bobble



# COOLING

## TEMPERING ENERGY BRINGS INTENSIFYING INSPIRATION

**A**rtificial intelligence, robotics and nano-technology have changed, and will evolve and direct the way we live and think. The fashion industry is not isolated or ignorant to this development and this growth will affect the functional, aesthetic and technical development of materials and garments. We seek products that will reduce waste, reshape fashion and offer sustainable innovations that will not only influence the garment, but its wearer interface.



Invista, Filix knitted by Santoni  
Eva x Carola

19-3720 TCX  
GOTHIC GRAPE



14-0418 TCX  
BOG



17-3919 TCX  
PURPLE IMPRESSION



17-3020 TCX  
SPRING CROCUS



19-2432 TCX  
RASPBERRY RADIANCE



18-5612 TCX  
SAGEBRUSH GREEN



16-4728 TCX  
PEACOCK BLUE



19-4324 TCX  
LEGION BLUE



19-4026 TCX  
ENSIGN BLUE



19-3906 TCX  
DARK SHADOW





↓ Xinnuo by Jinlong



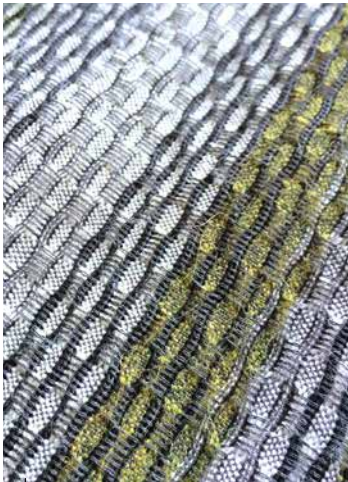
↓ Invista, Filix knitted by Santoni  
Eva x Carola



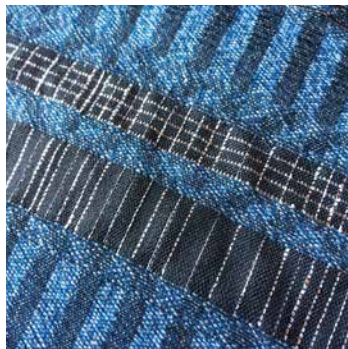
↓ Biella Yarn, Winning by M.oh.k



↓ Biella Yarn, Zixin, Winning by Bobble



↓ Best Shan, Zixin, Esquel by M.oh.k



↓ Shilead by M.oh.k



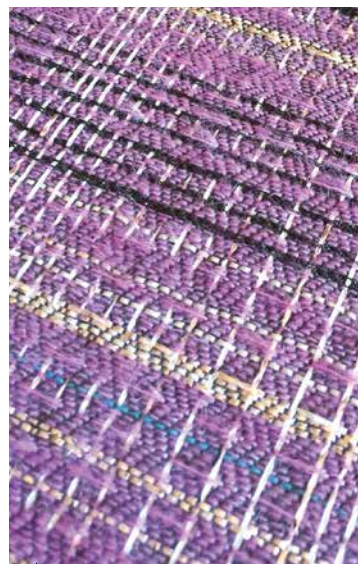
↓ Zhongding, Best Shan, Winning  
by Cassie Henderson

## YARNS:

Nylons and poly blends, monofilaments, fibre optic yarns and PTT fibre combinations. Fine mohair, hairy mohair or hairy synthetics, elastane blends, metallic. Fine bouclés, high tech and eco-friendly. Matt oiled-finish rayons, glossy and super fine. Cotton and polyester blends that are super fine yet compact, and polyesters that sparkle and stretch with ultrafine yarn counts. Iridescent, pearlized, translucent, fine yarns, matt & shiny viscose, stretch yarns (Lycra), polyesters, nylons, cottons, wools sustainable and performance yarns.

## KNITS AND STITCHES:

Amalgamation, expansive, enhanced, raised structures, cramming and spacing, extensions, edge work. Transparency, icy finishes. Bio gaze, bobbles, wavy edgework, technicity. A mix of density and transparency. Tensioned knits similar to elastic bands, stretchy spandex knits, diamond structures, surface detailing, and structured support, active inspired catering to movement. Pleating and embossed 3D details.



↓ Biella Yarn, Zixin by M.oh.k



Zhongxin



Orient Hongda



UPW



AA Global

# WHAT IS NEW IN THE SPINNERS AW 018-019 YARN COLLECTIONS?

## *MAIN NEW DEVELOPMENTS AND PARTNERSHIP*

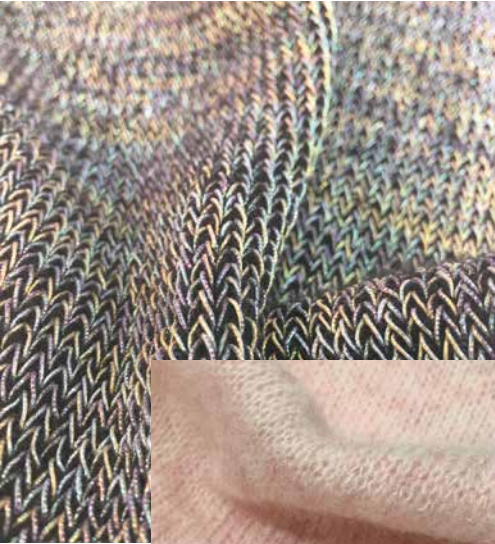
Following the research and development directions of many of its exhibitors, SPINEXPO™ is presenting a growing number of collections focussed on recycled, eco-friendly, organic & natural yarns for year round product. Natural and luxurious heritage yarns show tradition and modernity. We see new unexpected colours making segmented yarns more modern whilst an exploration of colours stemming from the changing world create more unique, artistic, sophisticated and luxurious looks. Brushed, felted and boucle yarns are important in creating surface texture, warmth and outwear inspired knitwear.

Autumn/Winter brings superfine yarn counts in Linen/ Wools, Linen/ Silks, 100% Tussah Silks and luxurious new articles such as matt silk. Renewable, refined noble fibres such as superkid mohair bring a wide range of stock service rich colours with exclusive lustre and sustainable properties. Stock service yarns from wool, cashmere, silks are widely available covering knitwear, circular knitting, weaving for apparel, furnishing and luxury carpets. Smaller quantity dye lots and shorter lead times make room for flexibility in the luxury world. Where-as stock service yarns create shorter lead times, flexibility

and creativity in the commercial world. Functionality continues to adapt and hybrids of natural and synthetic yarn combinations come into effect allowing brands to create smart knitwear products. Coolmax with merino, Cordura® with merino, antistatic yarns and reflective products continue this direction. Compression yarns pay more focus on body engineering and stretch versus rigid zones with innovative textures and stitches combined. Products from the exhibitors continue to show sophistication and quality with the added flexibility, innovation and creativity found from stock service suppliers.



Shilead



Südwolle

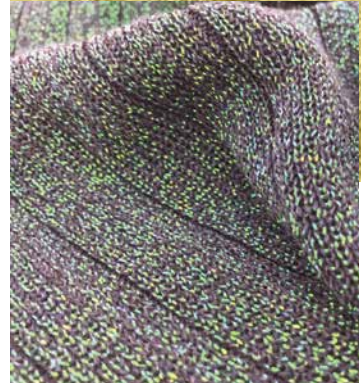


Huafu



Xinao

UPW



Shi Kwan

## Breakdown of yarn types / combinations

### **Cottons**

- Nep cottons, seen in rich and colourful palettes.
- Organic cottons and recycled fibres
- Biological cottons
- Cotton/polyester compact yarns
- Cotton/ Merino Blends

### **Linens**

- Winter linens seen in transitional yarns & weights – blended with wool

### **Mohair**

- Wide range stock service 100% mohair and mohair blends
- Extra fine mohairs through to blended novelty mid and chunky mohair
- Long fibre mohair creating real fur illusion.
- Brushed

### **Merino/Wools**

- Mix of multi colours – Rich changeable effects
- Technical adjustments made = Classic yet innovative
- Functionality, Anti pilling, machine washable, anti-perspiration, Cordura®
- Precision smoothness
- Organic wool

- Merino with air-like handles
- Brushed & Felted

### **Cashmere**

- Wide ranges of stock supported colours with full traceability
- Special marls – stock supported or uniquely created
- Delicate felts and Brushed finishes with filament cores.
- Cashmere irregular neps
- Superfine cashmere
- Eco friendly fibres – non-dyed and organic
- Plant dyed sustainable cashmere
- Machine washable with antistatic and moisture management

### **Silks**

- Stock supported, pure and blended silks
- Superfine worsted silks
- Tussah silks
- Silk/linen/ wool blends

### **Rayon**

- Matt appearances
- Glossy rayon's

### **Polyesters**

- 100% ultrafine polyesters seen in matt, satin and glossy finishes
- Bulky yet lightweight 100% polyester lily yarns
- Recycled polyesters, lightweight, smooth
- Long lasting colour – 100% polyester
- 100% polyester combining matt and shine with stretch

### **Chenilles**

- Super chunky, modern and luxurious Chenille's
- Fine, light weight and drapery velour and chenilles.

### **Metallics**

- Two-tone metallic yarns blended with air spun yarns
- Core yarns wrapped with metallics
- Light reflecting metallics

### **Functional Innovation**

- Anti-static, anti-perspiration, moisture absorption
- Thermolite®, Miyabi® and Thermocather® blended with core yarns (thermally insulating, warm and comfortable).
- Solar: Light-adjusting yarns



# SPINNERS AT THE SHOW

ENVIRONMENTAL PROTECTION, EXCELLENT QUALITY RAW MATERIAL  
AND NEW PLANT DYED TECHNIQUES ARE A FEW OF THE DRIVING  
DIRECTIONS TO BE DISCOVERED IN THE SPINNERS' COLLECTIONS



**NINGBO ZHONGXIN WOOL  
TEXTILE GROUP**

is composed of 5 production units specialized in woollen and semi-worsted fancy yarns. As a leading company in fancy yarns, Zhongxin is showcasing four lines from their new Autumn/Winter 2018-19 collection.

“Fluffy” Designed and influenced by pristine fluffiness and lightweight textures with super soft hand feels. As a range, Fluffy reflects a delicate trend that is dominant for the coming season.

“Variety” inspired and created by combining different yarns, raw materials and colours to achieve a deep richness, which showcases the yarn structures and their adaptability. “Classic” focuses on worsted, woollen, and semi-worsted yarn developments combining multiple technical techniques to achieve both classical and innovative effects; “Functionality” A major direction featured and promoted at SPINEXPO coming sessions, features anti pilling, warm fibres, moisture absorption and other functional properties, to provide extreme form and functionality.

As an organization, Ningbo Zhongxin is committed to sustainability and environmental protection, aiming to hit the market with a line of new recycled products for this AW season.



**WUXI SHILEAD**

is a leader in eco-friendly recycled new innovative yarns. Established in 1992, Shilead is a pioneering company in the “green commitment” movement, maintaining APEO-free dyeing processes, and achieving a Zero Discharge of Hazardous Chemicals (ZDHC) status. In addition, Shilead define their commitment by all products passing Oeko-Tex Standard 100 class-I certification, OCS and GOTS certifications for organic cotton as well as GRS certification for global regenerated fibre. By using ecological, organic and recycled fibres combined with specialist spinning technology, spray dyeing and jacquard dyeing technology, Shilead has developed a collection spanning fashionable fur like yarns to athleisure stretch yarns, as well as yarns featuring a blurry effect that reflects and embodies the impression of oil painting.



**ZHEJIANG ORIENT ENTERPRISES**

mainly produce semi-worsted and fancy yarns and believe that fashionable eco-sustainable products can present themselves with style and glamour and be competitive as a new proposal to the market.

For the AW 2018-2019 collection they target a natural look and include recycled materials, multi-coloured roving yarns, contrast colour tweed and slubs, chunky jean effect tape yarns, fusion colour ribbed boucle's and elas-



tic fluffy yarns. The palette opens with a multi-coloured and almost summery range, which sets a tone of richness and diversity for the entire season.

Functional fibres, biological cottons, and recyclable polyesters that keep pace with the world trend towards green textiles are defining totems of the coming season. Irregular colour palettes and bouclé's shape colour and texture through tightly twisted yarns and rich mixed colours.

The result is a presentation of yarns different from the traditional norm; innovation is brought by the tweed and brushed effect in fancy yarns and the colour variation coming from neps and roving yarns.



**SPOERRY 1866**

Using only rare and precious raw materials and promoting Swiss quality, SPOERRY 1866 is now in its fifth generation and faithful to artisan traditions in the textile industry.

Defining itself through a commitment to maintain the natural character of raw materials, rather than improving them artificially with chemicals; SPOERRY sources, selects and uses only the best cotton fibres in addition to maintaining its own Caribbean plantation where quality is maintained through strictly limited production quantities.

Spoerry 1866 have a different approach, their aim being to select the best raw material, retain the natural character and blend these in-house to form a harmonious, balanced and unique high end products. This premium production approach allows Spoerry to produce small lots in a short time and to meet tight deadlines. A collection of fine cottons blends with silk, cashmere, synthetic or viscose fibres and technical fibres, carded or combed originated from expertise and experience resulting in the perfect product.



## YARNS & COLORS

are constantly studying market trends and both searching and forecasting the latest shifts in fashion.

Their fashion forecasting results are based on first-hand data collected from world wide existing high-end fashion customers. After processing this seasonal data they have defined four segments for the current market and translate these into the company's seasonal collection focuses.

With a never ending expectation from consumers and a move towards a more bespoke style consciousness, brands need to provide faster reaction times to satisfy customer requests. By using data analysis and smart production, Yarns & Colors is able to provide faster reaction time, shorter production time, reduced inventory and an ability to genuinely be informed by customer feedback.

Four key areas define Yarns & Colors concepts for AW 2018-2019:

The first focusing on natural, comfortable and modest luxury, while the second takes into consideration cultural heritage, living style and recycling; the third addresses a minimalist approach to quality, basic but fancy. Finally they present athleisure, which has been one of their key focuses for a couple of years now. This active focused fashion represents a life style, more relaxed and easy caring. The function is not the key, but is a bi-product of the fashion focus.



### **HUBO specializes in fancy yarns and presents in Paris, New York and Shanghai.**

This season they present two collections for AW 2018/19, **Hualian™ and Mastery™ their new line**, both each of which serve different markets.

Chenille & functional yarns are still top performers from HUBO and come revitalized this season. Combining different synthetic fibre characteristics and hand feels, their chenille yarns range from fine gauge, soft handle with shine to chunky yarns with fuzzy appearances, all of which have been possible through adjustments to the spinning technology to solve fiber tension and loosening concerns. For the development of functional yarns, HUBO have blended core yarns with Thermolite®, Miyabi® and Thermocather® to provide thermally insulating, warm and supremely



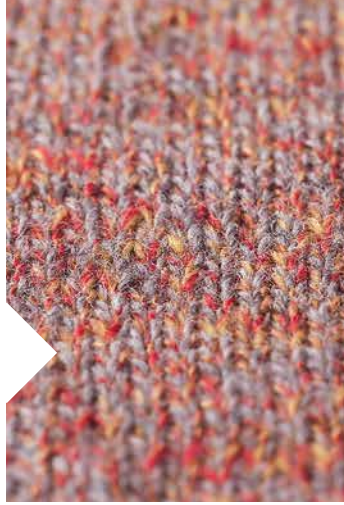
comfortable yarns, especially for this AW2018/19 season. HUBO push production innovation choosing various luxury fibres, high quality cashmere, camel, yak, and mohair and taking advantage of Italian machines and technologies, they have developed a series of soft touch, lightweight, lux surface fine gauge brush & boucle yarns. Individual fibres paired with unexpected and unpredictable colour combinations bring new trendy roving & air spun yarns. Subtle metallic two-tone effect air spun yarns give an understated luxury feel; brushed yarn mixed with spring tapes, giving the yarn a unique look. The latest sequin yarns manufactured on new technology can be knitted on 12GG, and are constructed in high-end fibres, such as cotton and wools, with sequins as small as 1mm.



## HUAFU

is known for their premium melange product, varied processes and continue to combine environmentally friendly products with fashion and technology. This Autumn/Winter 2018, Huafu sees a balance between Calm, Energy and Mystery. Rusts compliment cosy and warm autumnal tones and blue-green tones. Greyed off pastels give a romantic note that contrasts to the mysterious darks in their palettes.

Their main products this season are



inspired by leisure/sports and include neps yarns that are lively, fresh and natural with rich and colourful surfaces. Their “phantom” yarn also offers rich colours this season combined with strong texture.

## ITALIAN SPECIAL YARNS, ISY

brings simplicity through experience, knowledge, craftsmanship and expertise to create special yarns that embody a “made in Italy” sign of quality.

Continuous research and development in materials, a curiosity to experiment with new forms and a desire to offer customers something unique and special is seen in ISY collections for AW 2018/19, where natural and synthetic fibres are alternated harmoniously.

Tradition and modernity come to life in ISY collections with hints of lightweight and romantic qualities. Light reflecting metallic yarns are the distinguishing feature of their collection. ISY targets those on the edge of the creative envelope who wants to look beyond classic colours and discover new avenues and creative opportunities.



## LUGANG CULTURE

pay a special focus on natural raw materials to meet the high-end yarn market demand. They present Super Merlino, with an air-like hand feel, and Super Angels that brings precision smoothness to the surface of the knit, anti-pilling achieving a 3+ pilling grade and is a machine washable product. Both of these products are created using Lugang’s advanced spinning and finishing technology and are available in solid and melange colours with long-term stock service.



Lugang also present Super Regina cashmere that is also featured in their high-end collection this season. This article is manufactured using cashmere fibres that are less than 14.mu in fineness. To complete their high-end collection, Lugang deliver luxurious fancy yarns using extra fine kid mohair or baby alpaca as the basis of their raw materials. Lugang **provide stock service for all their yarns in basic colours** to cater individually to their customer demands and hold raw white stock to be able to offer a dyeing service for small quantities with fast delivery.



**M.ORO** is renowned for its premium quality and high performance pure cashmere yarn. To complement the collection of plain cashmere, M.ORO is releasing stunning cashmere fancy yarns in different styles. In the latest colour trend research, representing the global directions for knitwear. M.ORO are releasing these new products under the names "Frequency Geometry" and "Lightly and Natural Touch". Colours are covering sporty, cheerful and neutrals in different shades and palettes. M.ORO is releasing 9 fancy yarn qualities from special marls to delicate felts, all of which are immediately available in stock service for sampling.

### ZHENXIN WOOL SPINNING

**THRIVE**, founded in 1990, is an integrated worsted spinning mill; starting from the production of greasy wool and the scouring and combing processes, through to wool top production, dyeing in-house, spinning, knitting and weaving.

The company boasts ISO9001 quality management status, ISO14001 environmental systems accreditation, is an accredited Woolmark licensee, holds Okeo-Tex standard 100 Class and is OCS certified.

Thrive produce worsted wool and woollen blended yarns based on worsted wool cycle machines, 100% wool, rich blends with cashmere and silk, wool acrylic blends and fancy yarns. Merino, Precious, Blends, Fancyworld and Next are new in the AW 2018-19 collection.

Research and development aims at improving quality, performance, sustainability. The new "functional dream" answers the request of many buyers for high performance and technical fashion materials that are on trend. Integrated cycle means short delivery for both sampling and bulk production.



**MISTER JOE** specializes in the production of fine and fancy yarns in both natural and synthetic fibres for knitwear, hand knitting, weaving and jersey fabrics. This season, they offer a strong and focussed collection of superkid mohair's that are available in a wide range of colours all of which are stock supported.





**SERVIZI E SETA** from Italy are known for their high-quality silk products and produce 100% silk and silk blends with natural and noble fibre yarns. The company offers a large stock service in raw white, tops, hanks and yarns allowing short lead times and flexibility. They also produce worsted spun silks in 2/120 Nm and 2/60 Nm, 100% wild tussah silk, linen blended with wool, silk and cottons as well as being the largest and highest quality producer of linen melange. They have over 40 colours in stock in Nm 1/26 and 5 colours in Nm 1/36. **Servizi e Seta has also registered the first matt silk in the market called "Opacum", available in 2/60 Nm and 2/120 Nm.**

Servizi e Seta offer a variety of collections including weaving yarns for apparel and circular knitting, in super fine counts such as 2/240.

They also offer a dedicated collection of furnishing, based on linen and linen blends in addition to silk and silk blends created for luxury carpets.



**WINNING TEXTILE** presents three key directions for Autumn/Winter 2018: ultra-fine, long lasting colours, and 100% polyester.

With ultrafine yarns very much on trend and in high demand from circular knitters of active wear and flat-bed knitters of sports inspired products, Winning Textile have developed a new matt oiled-finish rayon that has a glossy appearance and knits on 16 and 18 gauges. The second group of key items consist of 1/22 Nm cotton/polyester and cotton/viscose/polyester blends that have a super fine compact cotton appearance and hand feel with long lasting colourfastness. The synthetic blends are completely invisible to the immediate eye and will remain as vibrant as the day they were purchased. The third and most important product of the season has also been developed based on high demand: 1/45Nm 100% polyester that combines a matt shine finish with stretch, suitable for both 16 and 18 gauges.



**CONSINEE GROUP** include dyeing, woollen, worsted, semi-worsted, fancy yarn, design, research and development of polymer materials (special yarn), production, logistics and both import and export trade. The Group owns the first Asian lead fully-equipped automated system using imported Italian dyeing equipment.

Consinee provide special yarns for world famous clothing brands, top market buyers, leading manufacturers and designers.

Their cashmere raw material comes directly from Inner Mongolia, where raw materials are fully traceable. The company offer complete supply-chain traceability, from goat farming to raw material collection and transportation, to spinning and garment manufacture. Aware of the importance of **eco-friendly fibres** and according to the demands of the market, Consinee has developed a non-dyed, organic natural yarn.

**To explore and change**, Consinee have developed a segmented yarn based on the exploration of colour. Unexpected colour combinations make the segmented yarn more modern thanks to the use of a new dyeing process that makes the colour contrast sharper. Another key seasonal product is based on the concept of no perfection or flaws. Consinee have developed a very popular nep yarn that when combined with traditional cashmere yarn, irregularly fuses the colourful neps onto the base yarn through a special process giving the fabric surface a star like appearance. Consinee continue to improve technology, product development and develop functional products such as: machine washable yarn, yarns with antistatic functionality through to yarns with moisture management functions.



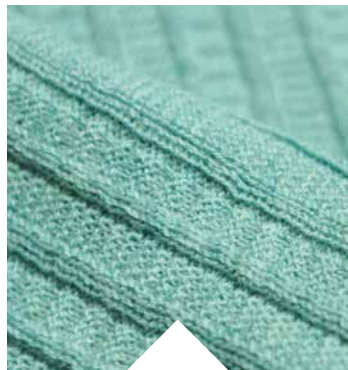


**TOP LINE** took this season's inspiration from the pure and elegant Edelweiss, an alpine mountain flower found in the Austrian Alps. Their two new luxurious yarns; Nimbus and Amara embody the exquisite nature of this flower and are created from natural fibre cashmere combined with a white steam filature spinning technique. Nimbus is a 100% pure cashmere yarn with a soft-brushed surface on a fine cashmere base. It brings a combination of softness and hardness. Amara is a beautiful white filament yarn encased with pure, fine white cashmere. The filament core adds a subtle shine and a glimmer of light within the soft, luxurious, brushed cashmere, resulting in a low-key high-end yarn.

**SHI-KWAN METALLIC YARN,**

an expert in the metallic and fancy metallic yarn field. This year they bring a new product to the market that combines the application of colourful metallics to solid yarns, creating multiple tones and variations not seen before. These articles give the collection a new visual effect and experience, combined in a high-class product.

In early 2017 Shi-Kwan made a strategic move and entered both the European and American markets. With strong competitive advantages when it comes to new developments, they have gained a strong and welcomed interest from a variety of brands. They offer their own unique perspective in the field of fast fashion, by providing quick turnaround and trend specific product.



ding linen this season. These are offered in tints of colour inspired by alpine flowers. UPW increased the number of colours available in all yarns, to give more choice from stock. UPW yarns are using more natural fibres than ever before, in more simple compositions. There is a feeling for purity, where the fibres are allowed to shine; it means less over-fancy constructions and an emphasis on refined textures, such as crepes and elongated slubs for a subtle irregularity. The power of the yarn is in the quality of the fibres and the skill in the spinning, which makes for yarns with a more controlled sophistication. The whole theme of the season is about "Inspirations". Gone are the dictatorial trends, and spinners now aim to inspire. There is more a mood for collaborations, working with customers, designers and retailers to stimulate creativity. The message of sustainability and socially responsible sourcing continue, but as these issues are fundamental to any responsible manufacturing, they become less of a theme and more of an essential way to do business. UPW continue building on the use of technical fibres, but less about active and more about seductiveness of gentle performance for all-day comfort and well-being.

**UPW - Strengthen the message of trans-seasonal yarns. Creating more choice from stock, both in yarn compositions and colours, pushing the desire to create and the offer of more flexibility to the customer.**

Building on the success of UPW core yarns with new smoother and softer developments in more superior fibres, UPW proposes a group of sleek semi-worsted superfine merino and pima cottons, to woollen-spun super soft yak with extra fine merino. The Cashmere collection is widened to include new finer qualities in blends with Silk, Pima and Royal Alpaca. UPW has evolved their cuddly, naturally coloured, non-dyed cashmere/llama/mohair from last Fall/Winter with a fine non-dyed Cashmere/llama yarn inclu-



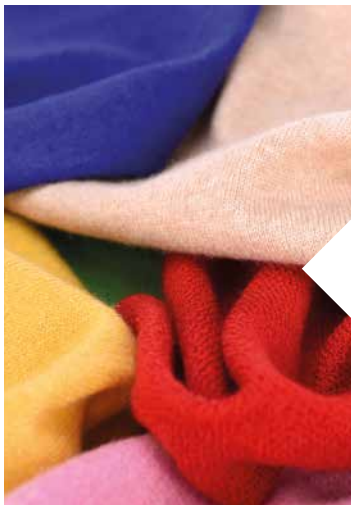
**ZHEJIANG XINAO TEXTILES,**

**yarns that not only perform, but look and feel great.**

Xiniao, one of the world's leading manufacturers of wool and wool/blend worsted spun machine knitting yarns for flat bed and circular knitting and for the manufacturing of socks and hosiery.

In their collection for Autumn/Winter 2018/19, they will launch a series of newly developed yarns where performance has been incorporated into fashion. The new yarns have been designed and engineered to meet the rapid growth in active and fitness wear, as well as the athleisure market, which has been identified by some, not just as a fashion trend but as a cultural change, particularly in the women's wear sector.

The new yarns also address the growing crossover interest and demand from the fashion sector to incorporate functionality into fashion, and vice versa, from the sports/outdoor sector who want to introduce into their already functional products a sense of fashion so that their products not only perform well but look and feel great. Xiniao's new range of "fashion meets performance" yarns include built in moisture management, UV-blocking, enhanced wear performance, water resistance, anti-bacterial, stretch-recovery, and yarns designed for production of compression garments.



**LIANHONG**

focus on product development this coming AW18. With a newly created R&D team focussing and specializing on market demand and trends they introduce a high quality collection that includes cashmere, wool/cashmere and worsted yarns. Their cashmere fibres are soft and smooth with natural elasticity and warmth. The hand feels are soft and warm and are produced in an elegant range of AW colours.

Lianhong have collaborated and exchanged market directions with their international clients to achieve a focused yet directional range that caters for the needs of the European markets. Products are fashionable, affordable and rich. Lianhong integrate popular fancy and coloured yarns into their collection to showcase three-dimensional effects, that create a rich feeling and all of which highlight the strengths of Lianhong.

# KNITWEAR MANUFACTURES AT THE SHOW

## SOUTH OCEAN

South Ocean Knitters Group continues to put great emphasis and deep resources into its design and development offer, highlighting newness in yarns, stitch, silhouette and treatment of its fully fashioned knitwear. Knitting since 1963, South Ocean have become one of the most innovative and progressive knitters in the world. Backed up by a wide and varied manufacturing platform across China, Bangladesh, Cambodia, and Myanmar supporting their customers and their future customers' needs. This allows them to bring speed, innovation, flexibility, and quality under recognized compliant initiatives for both Northern and Southern Hemisphere consumers.



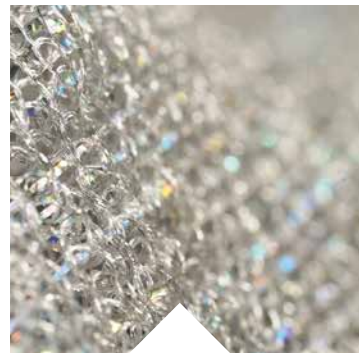
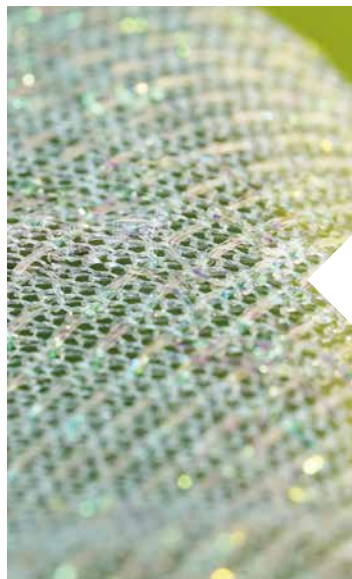
## DRAPER

An expert in premium fashion knitwear products.

Established in 1989, Draper is a designer and manufacturer of knitwear products, providing customers with a one-stop-service from research, design and product development to the manufacturing and global export of goods. With over 28 years experience, Draper has worked with over 60 premium brands and chain stores throughout the world, gaining long-term partnerships by producing the highest quality product with streamlined customer service.

During 2016-17, Draper invested over USD4M in advanced computerized facilities to even further broaden their product development capabilities. They produce a wide range of fashion knitwear, including inlay, quilting, printing, washing, embroidery, and mixed media knitwear, from 3gg up to 18gg. With a wide range of yarn options and seasonal stock service from their yarn team, together with on-trend stitches and samples from their in-house design team, they are able to inspire their clients and offer fast and efficient sampling. At the beginning of 2017 they also introduced an ERP real-time management system that further improves productivity and streamlines processes.

Recent developments include their e-catalog, which allows their customers to 'shop' and understand better the South Ocean offer and design capabilities. Filter their design and yarn library to your requirements allows a quick and real time response to what is on offer. This allows them to have a virtual meeting anywhere and at any time around the world. From a yarn perspective they continue to innovate and lead with their key suppliers across all noble fibers and luxury yarns, performance blends, quick response fashion blends and key item core yarns. It's all about newness and innovation while maintaining value for money in a quality and compliant multi country of origin environment.



**YANGFAN / YF KNIT** established in 1993, is state-of-the-art and the largest sweater manufacture for WHOLEGARMENT Shima Seiki machines.

They have over 100 Wholegarment machines in their Changhsu factory, alongside a wide variety of computer knitting machines by STOLL.

The YF Knit office based in Shanghai has a team of designers to work with brands for stitch development and sampling seasonally as well as in house style as a source of inspiration and starting point for many clients.

YF Knit is in the process of expanding capabilities into shoes, bags, accessories, as well as home textiles with the addition of new machines. Their aim is to become a truly revolutionary manufacturer that does not only focus on quantity but on quality as well.

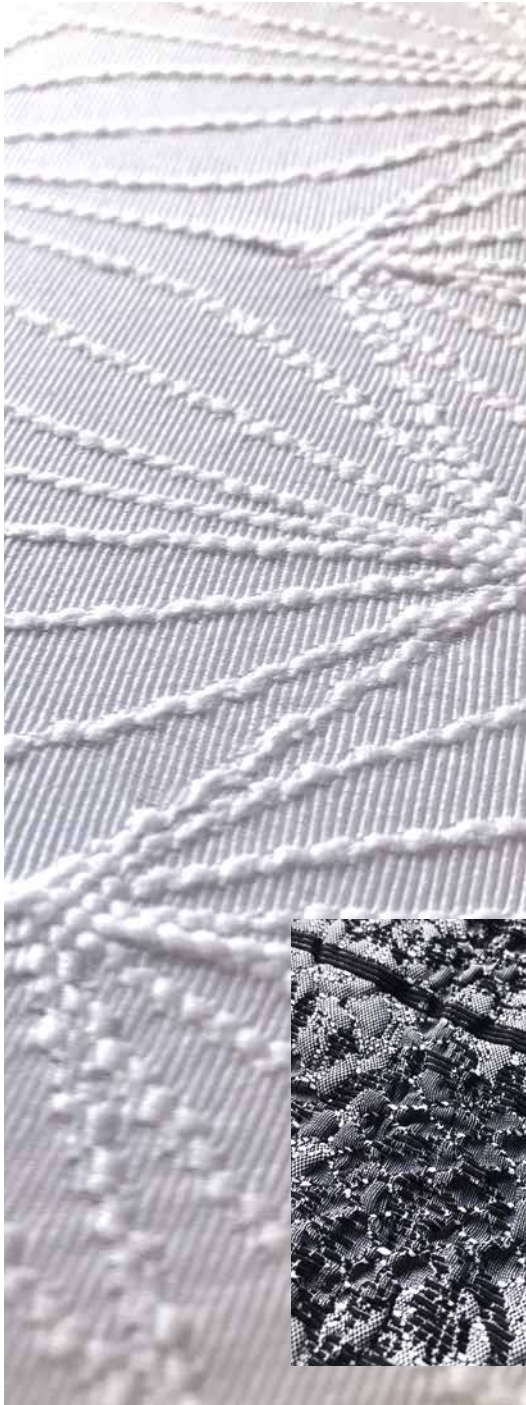


TRENDS CAPSULES  
AT THE SHOW



# THE BEAUTY OF MAKING

A STORY OF INFLUENCE;  
HOW WE LEARN, CREATE AND CO-CREATE.



**T**HE AW18 SPINEXPO™ THEME HAS INSPIRED QUESTIONS THAT RELATE TO EXISTING AND FUTURE WAYS OF MAKING; WHAT IS THE CURRENT STATE OF ACTIVE WEAR MANUFACTURING, WHAT MAKES IT UNIQUE AND WHAT ARE THE EXTERNAL FACTORS THAT IMPACT AND INFLUENCE THE PROCESS?

We have recorded the steps involved when making performance textiles and active wear. A story that celebrates the transitional phases and explains how each element relates to one another. By visiting the exhibition, you will gain information about; body analysis, the relationship between functional yarns and machine settings, post-process techniques and co-creation, amongst several other processes



Textiles with function, texture, form and style are the key ingredients behind every product. Through constantly exploring, researching and testing new methods on Santoni Shanghai's seamless and circular knitting machines we take our collections to a new level and offer innovation in textiles and performance wear.

This season we are focusing on the elements involved and how they interact and influence with one another.

For example, we learnt that the Chinese elements influence each other in a similar way to our seamless knitting process.



*Chinese elements:*

WOOD fuels FIRE forms EARTH contains METAL carries WATER feeds WOOD.

*Seamless and circular knitting elements:*

YARN fuels MACHINE forms TEXTURE contains TEXTILE carries FUNCTION feeds YARN (development)

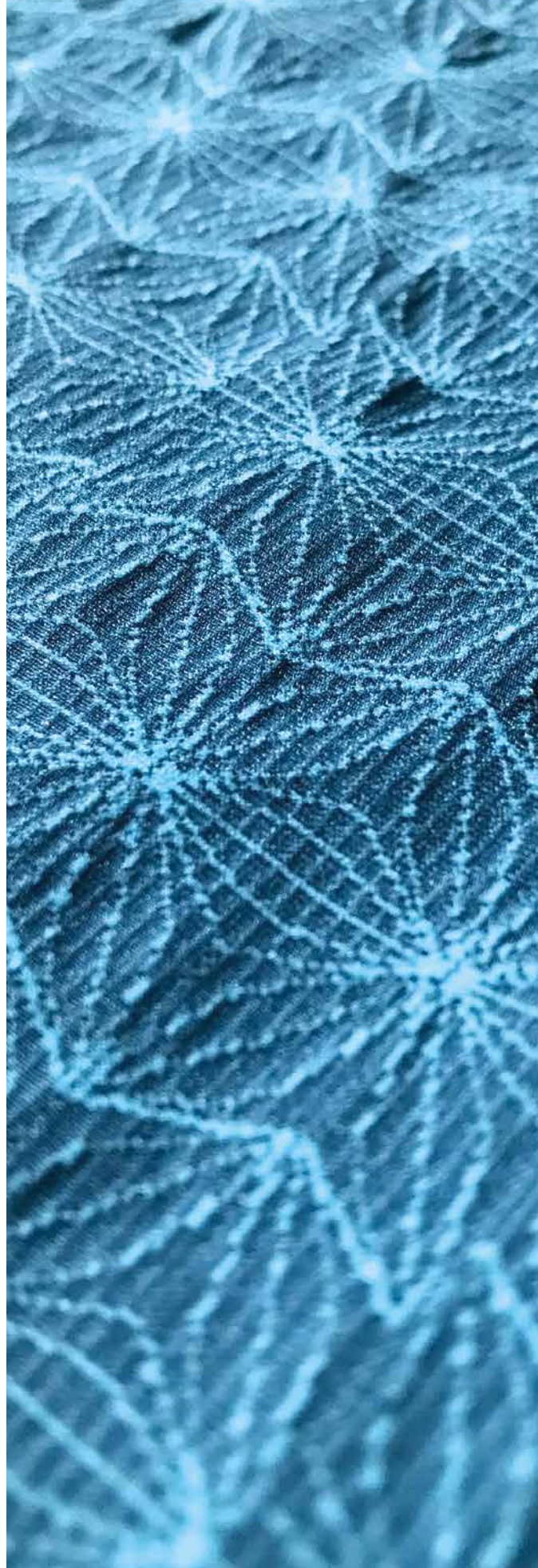
By translating this philosophy we emphasize a new way of working, highlighting the importance of an equal and coherent place of all elements in the value chain. Related, intertwined and dependent on each other. We prioritize transitional stages rather than focusing on the final end result. Being part of an evolution and a continuous process of crafting, learning and growing:

**The Beauty of Making**

By becoming aware of the value of making elements we therefore also look at external influencing elements. We make through collaborations, with inspirational crafters of atelier BaliLab and technicians from different parts of the world, with different tools. We craft together, learn together, evolve together and influence one another.

- By working with different specialized fibre and yarn suppliers like Invista, Filix, Aquafil, Formosa, Xiniao and Südwole we assess the making process and how to implement functions of compression and comfort on Santoni Shanghai seamless and circular knitting machinery.
- Post process technology achieves a clean finish, which complements the clean production of seamless knitting and adds functions like additional strength, ventilation and texture.
- Being based in both Europe and Asia has also influenced the graphical elements and form, taking inspiration from what we see around us, resulting in a mix of East and West.

The collection displayed is divided into a performance section called Studios and a street wear section called Intermixture.





## Studios

*Invista x Santoni*

*Each element considered*

When making performance wear, we analyse the body and how a garment could influence or give benefit to an athlete. We ask ourselves which functions need to be placed where in the garment and what considerations we need to keep in mind?

- Compression to feed muscles that feels light and invigorating, while remaining breathable
- Comfort where the skin / body is sensitive but remains a good fit to ensure the body can move freely
- Shape to correct body position and promote an active posture but remaining lightweight

This requires different needs in one garment. A collection of different functional yarns in combination with different machine settings and body mapping that works seamlessly together.

'Studios' is a mix of functional fibres and yarns from Invista, Aquafil, Filix and Formosa, machine technology from Santoni Shanghai and Studio Eva x Carola x SPINEXPO concept direction. A collaboration, which consists of continuous interaction between all parties, testing swatches and adjusting the elements to meet all parameters and functions we are aiming for!



## Intermixture

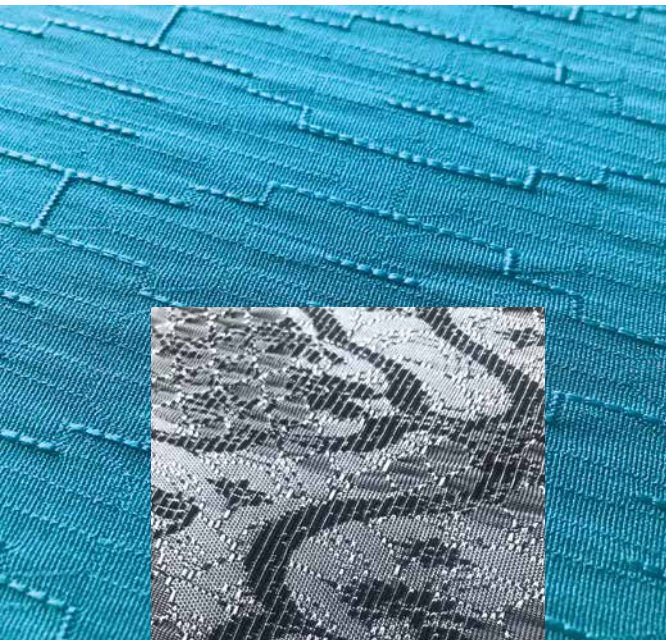
*Diyang Merino x Coolmax (Invista in collaboration with Joinfair) x Huafu. Fusion of function and style*

The collection consists of urban outfits; items worn to and from a workout – on the street and for leisure. Using materials with thermal properties like Coolmax and merino with yarns from Xinao and Südwole, '**Intermixture**' compliments the active range.

As the items are made by a cut and sew process, The Beauty of Making focus is emphasized through post process technology. How can we enhance functionality when working with materials that are not body mapped and are ready made or seamlessly engineered? How can we add similar functions that meet the need of the end user by manipulating the fabric? How can we add patterns and our East meets West styling, which we normally incorporate as graphics in our seamless designs? Post process technologies we explore are:

- Bonding techniques to strengthen fabric for clean seam finishing and graphic applications
- Silicon and rubber embellishments for extra protection and design, both by hand and through industrial techniques
- Nanotechnology for garment dyeing and printing which minimizes the use of water and energy.

By making this range we extended our making expertise of seamless designs and generated interesting partners and mastered new techniques along the journey. The Beauty of Making celebrates the transitional phases of evolution and explains how we learn, collaborate and make. We hope you enjoy the exhibition, that you are inspired and have learned something that will evolve your collection as well.



Studio Eva x Carola

# “IN & OUT”

FOR SPINEXPO™ AW18

BY STEVEN OO

**A**N INTRODUCTION TO A TECHNOLOGY THAT IS NOT SOMETHING NEW BUT HAS JUST RECENTLY STARTED MAKING WAVES IN THE KNITTING INDUSTRY, WHOLEGARMENT BY SHIMA SEIKI.

Although the technology has been around for a period of time, with rising labour costs such as linking, we have seen push in the industry towards even more automation. The technology is currently widely used in making classic silhouettes as it makes commercial sense but this capsule collection aims to push the boundaries of 3 dimensional seamless knitting. It's a conceptual exploration broken into three parts that addresses different uses for 'Wholegarment' technology using different types of yarns to create shape, drape and comfort. The overarching inspiration comes from the study of geometry. Because WHOLEGARMENT knitting is different from conventional knitting in that the machine uses four knitting beds instead of the typical two, designing on it means thinking in 3D form. Squares become cubes, triangles become pyramids, and circles become spheres. By keeping the focus of inspiration on the simplicity of the geometric forms, we hope to highlight the inside out beauty of WHOLEGARMENT that includes, shape, drape and comfort.

The first group, 'In' focuses on using luxurious cashmere and mohair fibres from Consinee and Topline to present a capsule collection of garments to be worn whilst inside the home. Comfort is key and the silhouettes are not form fitting to allow emphasis of drape and flow.







The second group “&” features looks to be worn both inside and outside, garments that can be worn to work and to dinner. Fancy yarns from Regal Lugang include alpaca and merino boucle’s.

The last group “Out” introduces garments to be worn specifically outdoors. The silhouettes are more form fitting and the yarns provided by Joinfair include fine cashmere and merino blended with Coolmax by Invista. Due to the functional aspect of this capsule, special performance qualities have been incorporated, such as a polyester fibre that draws moisture outwards and away from the wearer’s skin keeping the body cooler. The blending of this performance fibre into traditional yarns such as merino and cashmere, create yarns that retain comfort with an added layer of functionality.

As fashion progresses towards usability and functionality, traditional knitwear as we know it is already in the process of transforming itself. While world suppliers of natural fibres such as wools, cottons, silks and linens struggle with supply and demand of the markets as well as the effects of nature itself, manmade fibres are also starting to present themselves as an attractive option due to their durability, added functionality, and some even with a bit of eco friendliness. Not only are yarns improving constantly, the technology we use to manufacture garments are also defying imagination in terms of automation and efficiency, all of which to bring us modern knitwear that we can wear “In & Out”.

Designer: Steven Oo

Manufacturer: Jiangsu Yangfan

Spinners: Consinee Topline, Regal Lugang, Joinfair

# A PLAY ON “ENDURING”

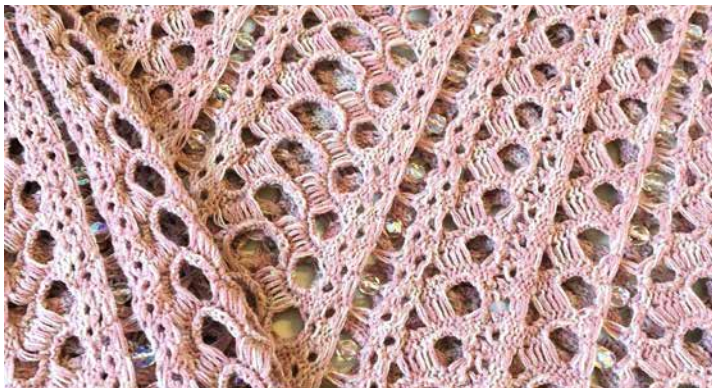
TWO OF THE MAIN TREND SECTION OF AW 018-019 SPINEXPO™ TRENDS

BY RORY LONGDON

**R**ORY LONGDON, EXPLORES MICROSCOPIC CLOSE UPS OF CRYSTAL FORMATIONS INSPIRED BY OUR ENDURING TREND STORY THIS SEASON.

Focusing heavily on fabrication that recalls the jagged encrusted, yet delicate forms, either through stitch work or through the incorporation of glass beading and crystals into the knit, we see crystal formations recreated. The capsule sees encrusted surface texture and luxury shimmers throughout.

Yarns used are cashmere and linen blends, ultra-fine wool and cotton blends and soft touch stretch viscose. Knitted in a palette of Mauve Shadows, Opal Grey and Minimal Grey.



Designer: Rory Longdon  
Manufacturer: MRC, Italy  
Spinners: Armonia, Yarns & Colors,  
Winning & Zhongxin

# ORIENT

H O N G D A



**ZHEJIANG ORIENT ENTERPRISES Co.,Ltd**  
**浙江沃伦特实业有限公司**

**BOOTH NUMBER: A6**

Add: No.263 Huashi East Road, Longxiang Dev Zone,  
Tongxiang City, Zhejiang Province, China  
Website: <http://www.orientzj.com>  
Email: [info@orientzj.com](mailto:info@orientzj.com)

CONSINEE GROUP

**TL**

**TopLine**

*Luxury in Fashion*

Top Line (Ningbo) Textile Co.,Ltd.

Address: No. 65 Haichuan Road, Ningbo China

Tel: +86 574 8752 2188

Fax: +86 574 8752 2168

Email: [info@top-line.org](mailto:info@top-line.org)

[www.fancy-yarn.com](http://www.fancy-yarn.com)

Booth Number: A11 & A9