



SPINEXPLORE

SPINEXPO™ PARIS

PRESENTING THE SPRING/SUMMER 2019 COLLECTIONS

6-7 FEBRUARY 2018

AT THE CITÉ DE LA MODE & DU DESIGN
34 QUAI D'AUSTERLITZ 75013 PARIS



—

**HIGH PROPORTION
NATURAL FIBER BLENDING
FANCY YARN**

高比例天然纤维混纺的拉毛纱



**OMBRE COLOUR CHANGE
FANCY YARN**

渐变花式纱

—



—

**MULTI-COLOURS
ICELAND ROVING**

多彩冰岛毛



**FINE & DELICATE
BRUSHED YARN**

高支/细支拉毛纱

—



ORIENT

H O N G D A

Booth No. A3



www.orientzj.com

HONGKONG

ORIENT HONGDA ENTERPRISES CO., LTD.
Tel:+852 2721 0806
Fax:+852 2721 0680
Room1603, 16/F., Clifford Centre No.778-784
Cheung Sha Wan Road, Kowloon, Hongkong

CHINA

ZHEJIANG ORIENT ENTERPRISES CO., LTD.
Tel:+86 573 8823 6883
E-mail: info@orientzj.com
No.263, Huashi East Road, Longxiang
Industrial Zone, Tongxiang City, Zhejiang

OVERSEA

ORIENT HONDA USA OFFICE
Tel: 917 902 7382
E-mail: Jennifer@orientzj.com
Seesee.wong@orientzj.com
8/floor 545 Fifth Avenue, New York, NY 10017



SPINEXPO™ SPRING/SUMMER 2019

A COLOUR PROPOSAL OF BALANCING CONTRASTS

A Sensual Future follows on from the "Future Dialogue" discussion held during SPINEXPO™ New York, which focused on how sensuality works as a new design strategy for the future of emotionally driven products, in fashion and home design. A sensual Future is influenced, focused and offers yarns and knitwear direction for the Spring/Summer 2019 inspired by the confused political environment that is a foundation of this century. A Sensual Future embodies how this confusion influences our feelings and reactions, how we are drawn to products that have intimacy and a "feel good" focus.

In this confusion, we confront two major directions. Peaceful, straightforward and harmonious products, with a growing trend towards feminine, elegant designs; and secondly, a rebellion and roughness, using durable materials with conflicting fibres that create texture and colour innovation.

We believe that these two directions have a symbiosis, cohabitating and influencing each other. For this reason, we have isolated our first direction from the others as it stands independently, a new rise of harmonious beiges and white, complemented by faded flower tones. In contrast, metallics are present, but in a soft and subdued way.

RADIANCE



11-4001 TCX
BRILLIANT WHITE



14-1305 TCX
MUSHROOM



11-0601 TCX
BRIGHT WHITE



16-1103 TCX
PURE CASHMERE



13-0000 TCX
MOONBEAM



15-1220 TCX
LAITE



11-1001 TCX
WHITE ALYSIUM



16-1516 TCX
CAMEO BROWN



13-0905 TCX
BIRCH



13-1012 TCX
FROSTED ALMOND



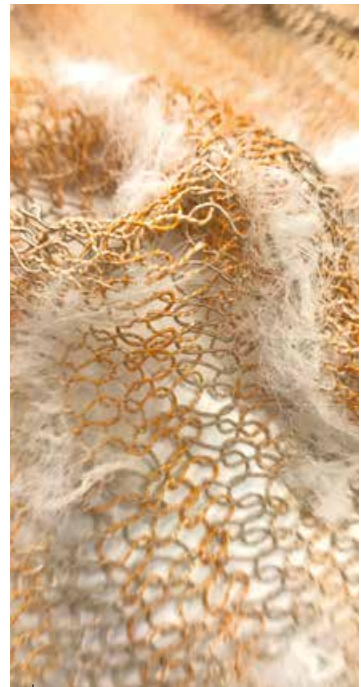
A family of soft natural colours fitting all types of fibre. Inspired by cosmetics and clays, the beiges are a story of their own and replace the family of whites as a new neutral direction; whites still stand out, but used in juxtaposition or blends with the beige palette as a "faire valor". The key is a soft or dry handle. From luxurious fine, but not transparent cashmere and noble fibres to crisp linen and ramie, the yarns have an appearance of simplicity and sophistication. The refinement lies in the construction and finishing, a return to regal elegance and style, with a strong modern influence.



↓ Zhongin



↓ GTIG Esen



↓ Best Leader

Yarns & Fibres:

Natural fibres dominate with a focus on well-being. Noble fibres, superfine merino, cool wools, cashmere and cashmere blends, are seen with smooth handles in eco-friendly and natural tones. Carded silk and cottons are reinterpreted into finer gauges then blended with nylon to bring a new level of volume to lightweight yarns. Refreshingly cool and delicate luxury Pima cottons, matt silks and mercerized cottons seen in fine openwork structures. Silky, superfine, filament and softly crushed silky chenille yarns are evident. Ramie and metallics. A soft brightness emerges.

Knitwear:

Regal elegance, soft tailoring, easy going modern classics, gentle feminine shapes, fluidity in trousers and skirts. Superposition of layers and patchwork of laces, embroidery and fragile edges. Micro weaves and stitches, intarsia in skintight fabrics with the integration of fringe techniques made by advanced knitting techniques. Multi-layers, woven ribbons, pleats and smocking like structures.

Menswear: Traditional feminine colours reinvent menswear, fully-fashioned and cut & sew knits mix in different gauges. A play on ribs is seen.



↓ Shilead

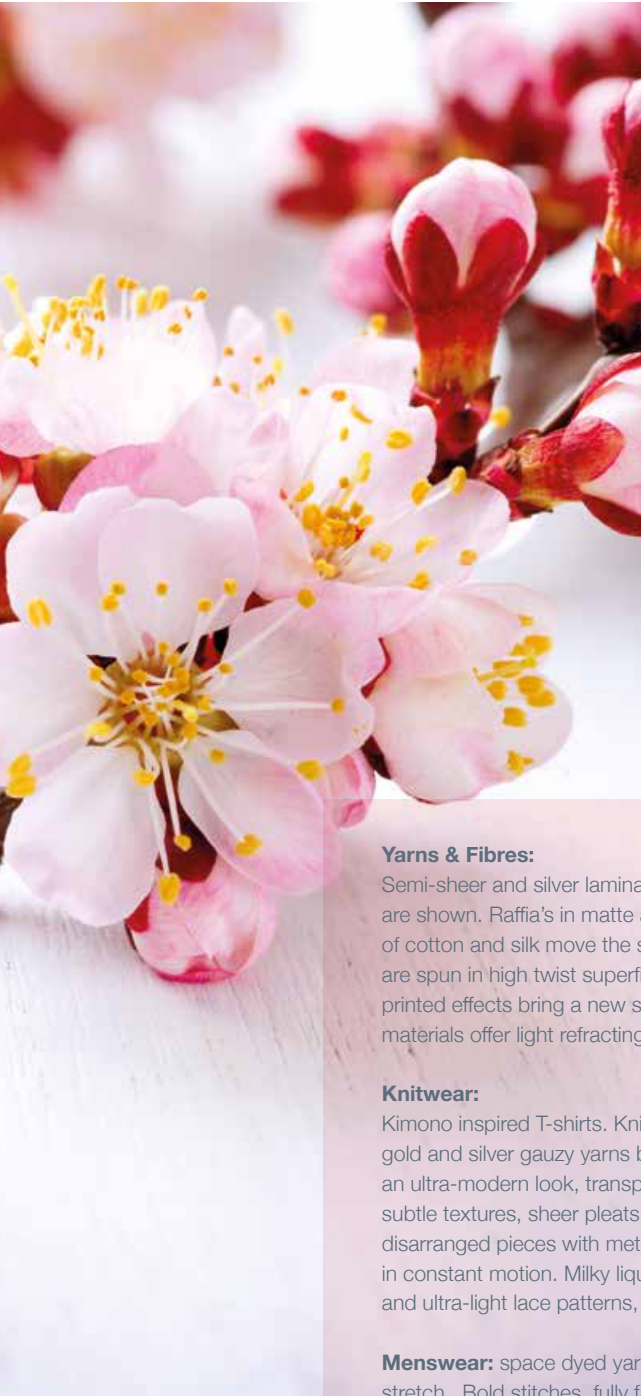


↓ Winning



↓ Winning

IKEBANA



This palette looks for balance, with a sense of exploration.

The inspiration for the softer palette leads to soft but mid-tone pastels, inspired by parchments, with a watery and delicate appearance, which comforts and consoles, in which we see tiny coloured fragments. A wide variety of new pinks with the addition of a soft lilac, provide romance and femininity. The opposite palette brings tones a level stronger with colours fitting fresh linens and new structural blends of natural and man-made fibres. Discreet additions of neeps and visual constructions contain the importance of Orchid Pink and Pale Lime Yellow. The palette brings compelling and surprising proposal, showcasing a more interesting perspective in the use of colour.

Yarns & Fibres:

Semi-sheer and silver laminated linens, shiny silks, matt stretch or high shine fluid viscose's are shown. Raffia's in matte and shine bring unexpected surface structures. Natural fibres of cotton and silk move the surface of the fabrics. Tiny sequins and micro coloured beads are spun in high twist superfine fragile textures. Multi-coloured, jaspé and water colour printed effects bring a new softness to knitted fabrics. Nylon elastic, metallic, and luminous materials offer light refracting and iridescent textures.

Knitwear:

Kimono inspired T-shirts. Knitted Inlay techniques are used to recreate floral patterns using gold and silver gauzy yarns blended with natural cotton threads. Quiet sophistication for an ultra-modern look, transparent knits with open side details, plain and beautiful shapes, subtle textures, sheer pleats, crisp folds, crinkling, wrinkles and ribs. Over layers, fragmented, disarranged pieces with metallics, iridescent and transparent structures welcome yarns in constant motion. Milky liquid and glossy surfaces. Metallised knitwear. Fine open work and ultra-light lace patterns, nets and voiles, hyper refined.

Menswear: space dyed yarns and textural marls. Clean lines, loose knits with performance stretch. Bold stitches, fully fashioned, mix of gauges, ribs, laser-cut edges and layered muted colours. Plaid checks, contrast ribs, figurative jacquards and discreet tie-dyes.

11-0603 TCX
PASTEL PARCHMENT



16-4703 TCX
GHOST GRAY



13-3406 TCX
ORCHID ICE



12-0520 TCX
PALE LIME YELLOW



14-3812 TCX
PASTEL LILAC



18-4215 TCX
BLUE MIRAGE



12-1212 TCX
VEILED ROSE



18-3905 TCX
EXCALIBUR



13-3207 TCX
CHERRY BLOSSOM



15-3214 TCX
ORCHID



11-2511 TCX
SHRINKING VIOLET



19-2620 TCX
WINTER BLOOM



14-3805 TCX
IRIS



19-3712 TCX
NIGHT SHADE



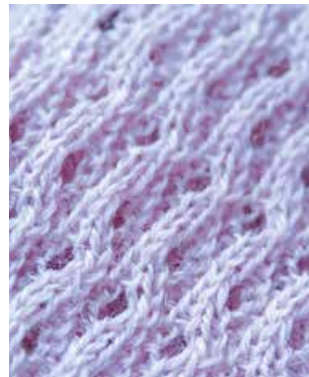
14-5002 TCX
SILVER



Best Shan



Winning



Xinao

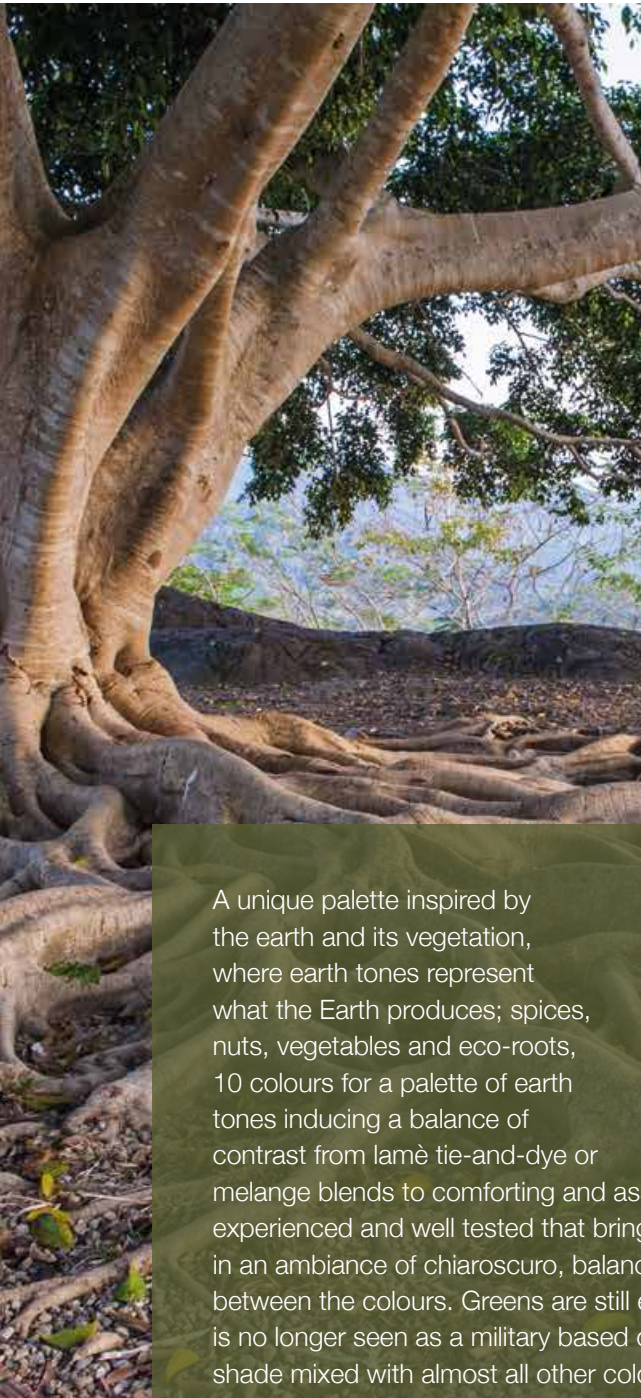


Winning



Zhongxin

MAHOGANY



A unique palette inspired by the earth and its vegetation, where earth tones represent what the Earth produces; spices, nuts, vegetables and eco-roots, 10 colours for a palette of earth tones inducing a balance of contrast from lamè tie-and-dye or melange blends to comforting and assured, warm, experienced and well tested that bring impactful colours in an ambiance of chiaroscuro, balancing a contrast between the colours. Greens are still evolving, as khaki is no longer seen as a military based colour but as a catalyst shade mixed with almost all other colours. Gold metallic is important to embellish and enhance the direction.

16-1324 TCX
LARK



18-0228 TCX
PESTO



17-0115 TCX
OIL GREEN



19-4205 TCX
PHANTOM



19-0823 TCX
CROCODILE



19-5513 TCX
DARK GREEN



18-2019 TCX
GRAPE SHAKE



19-1625 TCX
DECADENT CHOCOLATE



18-0629 TCX
LIZARD

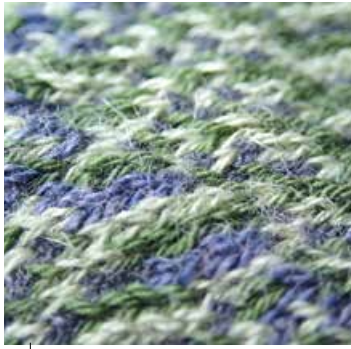


19-0508 TCX
PEAT



15-0927 TCX
PALE GOLD





↓ Zhongxin



↓ Best Shan



↓ Best Leader



↓ Winning

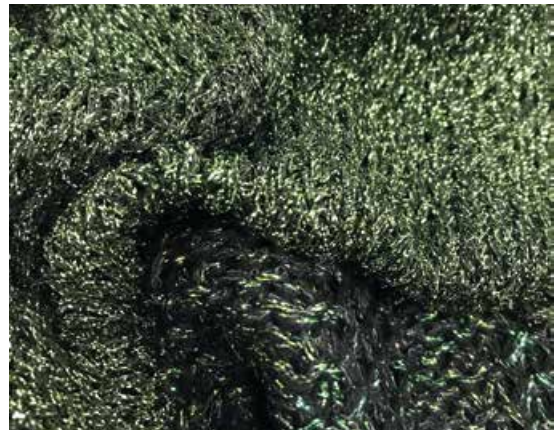
Yarns & Fibres:

Natural yarns are dominant, with crispy and dry hand feels, matte cottons, high shine viscose, merino wool, silk, blended with Tencel, Polyester and high stretch nylons. All cohabit with fine raffia, cellophane and paper yarns. Shiny and matte effects are seen often in organic plant-dyed palettes. Fibre and stitch constructions with high twist, steel-cored yarns. Stringy thread-like linen and hems coarsely spun with extreme slubs, resulting in unrefined yarns with dry handles, snarled, feathery, straw-like and eyelash finishes. Hemp and wool mix knotted yarns give strength to the knitted structures. Tweedy blends of multi-coloured yarns are mixed with filaments, fragmented, broken, twisted and crumpled. Unfinished, worn and porous surfaces offer natural rustic handles. Floating stitches. Earthy tones are here to stay.

Knitwear:

safari feel with casual shapes focusing on its tactile nature: open stitches, manipulated structures, clean surface stitches, minimal patterns and wood grain effects. Wicker baskets, striped motifs, raffia weaves with netting structures and open weaves.

Waffles and plated ribs are seen in menswear.

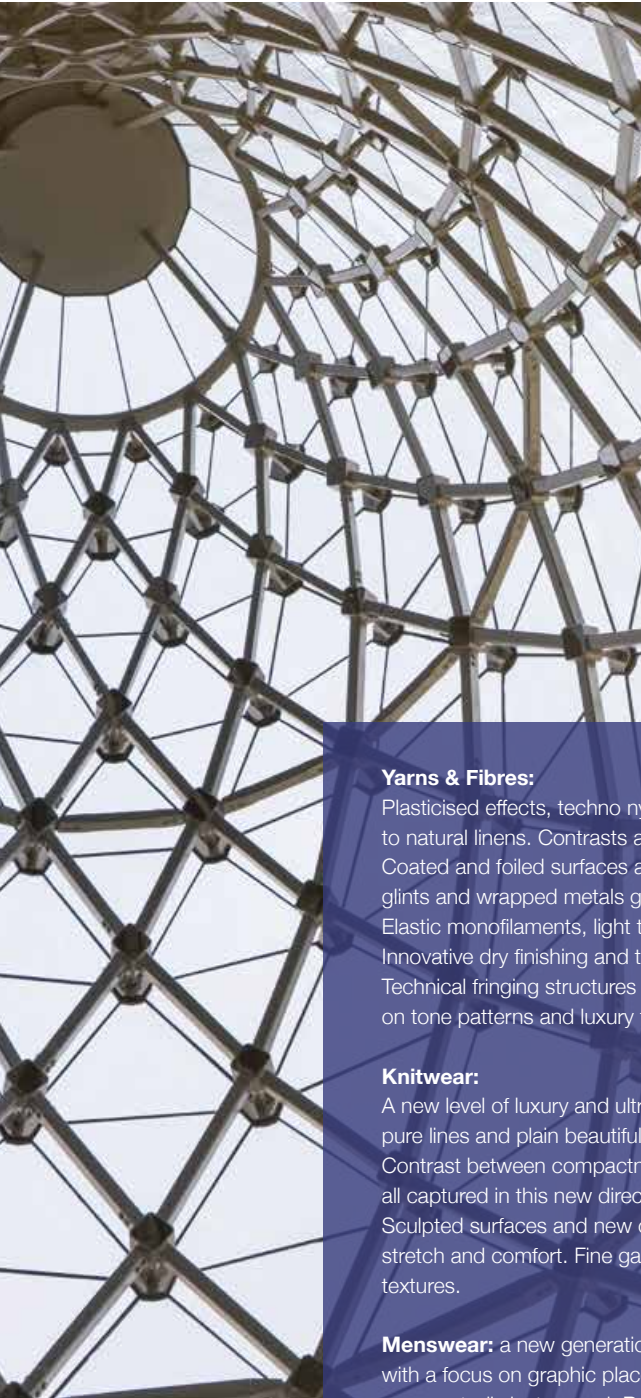


↓ Shilead



↓ Winning

GEODESIC



This trend speaks of a trial to use colours as an answer to chaotic and multi-directional influences. The first palette is a modern and attractive palette of colours cohabitating to bring light in a direction fitting a more casual, sportive and relaxed but sophisticated environment. Colours are not bright but have a real intensity, with a fog green, a soft turquoise and a tamed yellow, cohabitating with stronger beige and taupes and a chestnut brown metallic. The complementing palette mixes a wide variety of tones; new blues, with four earth-inspired colours. Khaki, making its return, rust, wheat yellow and a clematis blue lightening the palette. A story of contrasts, where we see the two proposals melting together.

Yarns & Fibres:

Plasticised effects, techno nylons, fine cotton and wool blends, matte & shiny viscose next to natural linens. Contrasts are seen between compact and transparent yarns and knitwear. Coated and foiled surfaces are evident. Crumpled and crushed surfaces textures, distorted; glints and wrapped metals give permanent crushing and crumpled effects to the yarns. Elastic monofilaments, light transmitting, subtle sparkle effects, liquid & fluid yarns. Innovative dry finishing and translucent resins. Technical fringing structures use flexible yarns. Natural and synthetic fibres create tone on tone patterns and luxury fibres mix with performance yarns.

Knitwear:

A new level of luxury and ultra-modern looks show a new elegance emerging. Geometric pure lines and plain beautiful shapes capture functionality, effectiveness and endurance. Contrast between compactness and transparency, digital printing and glow-in-the dark are all captured in this new direction. Hand beading, embellishment and embroidery are key. Sculpted surfaces and new cuts of sporty chic natural jersey show freedom of movement, stretch and comfort. Fine gauge knits and sporty classics update using fine understated textures.

Menswear: a new generation of wearer sees smart, casual yet sporty pieces showcased with a focus on graphic placement and composition. Ribs and cords, woven inlay unexpectedly juxtaposed. Raw edges, clever cut, candy cane hazy stripes, multi coloured cottons, impalpable mesh and abstract webby structures.

14-4201 TCX
LUNAR ROCK



17-1109 TCX
CHINCHILLA



16-0213 TCX
TEA



19-3951 TCX
CLEMATIS BLUE



14-0935 TCX
JOJOBA



18-1142 TCX
LEATHER BROWN



19-0414 TCX
FOREST NIGHT



17-0210 TCX
LODEN FROST



19-4540 TCX
DEEP LAGOON



14-1038 TCX
NEW WHEAT



17-5335 TCX
SPECTRA GREEN



19-4028 TCX
INSIGNIA BLUE



13-0210 TCX
FOG GREEN



19-4029 TCX
NAVY PEONY



16-0836 TCX
RICH GOLD



UPW by Lucy Spendlove



Winning-Sawada-Shi Kwan

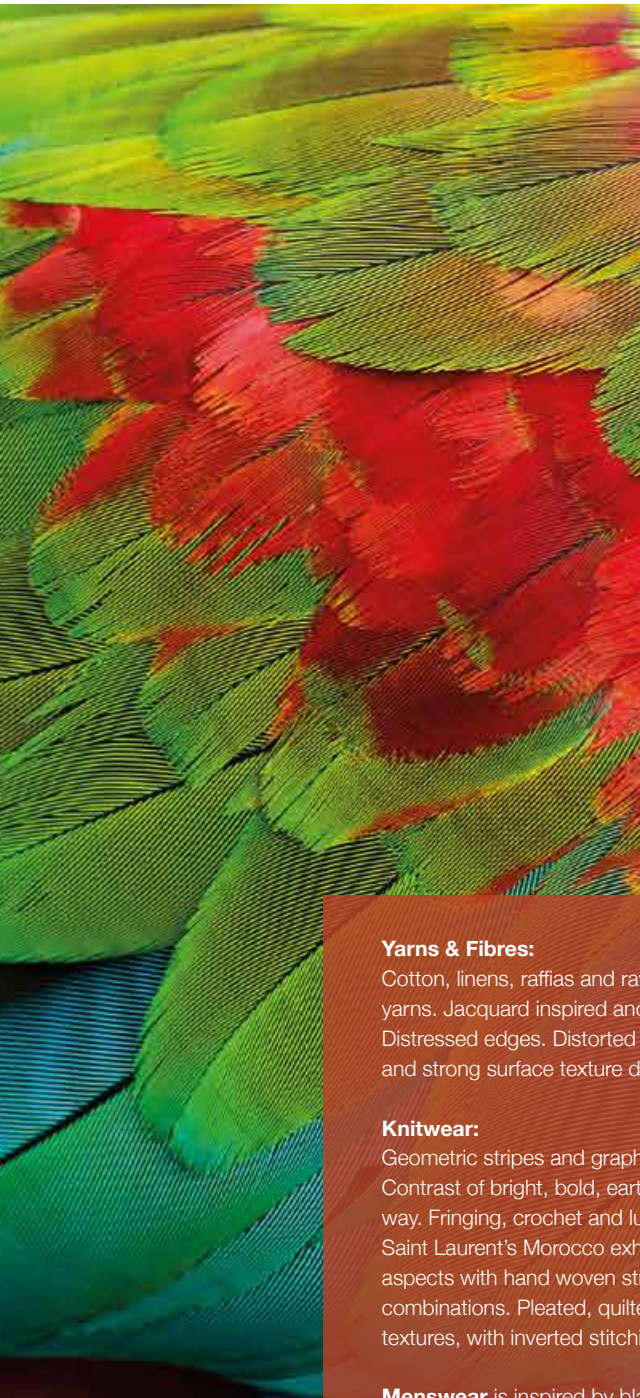


Shilead



Lugang by Steven Oo

STRELITZIA



A palette of soft and strong colours, very refined, inspired by dried fruits, plants and minerals, both luminescent and natural, to fit summer crisp and silky materials, together with a counter proposal of bright colours reminiscent of Asian and African Tribal textiles. This global palette is making hybrids attractive, either minimalist, or folk-inspired, tempting a new dialogue in propositions. The focus is vibrancy, rhythm, and a more sportive palette than the elegant first palette; but combination exudes mystery.



Sawada

Yarns & Fibres:

Cotton, linens, raffias and raw silks with natural slubs, mini bouclé's and decorated fancy yarns. Jacquard inspired and printed stripe effects, multi-layered and vintage looks. Distressed edges. Distorted constructions and irregular dye effects, macramé braids and strong surface texture dancing.

Knitwear:

Geometric stripes and graphic pattern work seen in lightweight yet powerful jacquards. Contrast of bright, bold, earthy and textured knits create more artisanal pieces in a modern way. Fringing, crochet and luxurious handwork details are seen. In contrast, fitting with Saint Laurent's Morocco exhibition, imperfection made perfect. Wrapped and crinkled aspects with hand woven stripes, knot weaving, and mixtures of different materials in unusual combinations. Pleated, quilted and embroidered fabrics create three-dimensional surface textures, with inverted stitching, feather inserts and long fringes.

Menswear is inspired by blanket patterns jacquards. Disco looks, patchwork, geometric patterning and zigzags. Folkloric symbolism and modern folk tale

19-1524 TCX
OXBLOOD RED



14-0957 TCX
SPECTRA YELLOW



19-1327 TCX
ANDORRA



19-3803 TCX
PLUM KITTEN



16-1429 TCX
SUNBURN



18-1354 TCX
BURNT OCHRE



18-1536 TCX
HOT SAUCE



18-1950 TCX
JAZZY



19-2033 TCX
ANEMONE



18-4936 TCX
FANFARE



19-3933 TCX
MEDIEVAL BLUE



15-0341 TCX
PARROT GREEN



19-1716 TCX
MALVE WINE



18-3518 TCX
PATRICIAN PURPLE



Best Leader



Sawada, Shi Kwan, Zhongxin



FashionYarn, Shi Kwan



Shi Kwan



WHAT IS NEW IN THE WORLD OF MERINO WOOL

A NOT TO BE MISSED YARN, COOL IN SUMMER AND WARM IN WINTER

ESQUEL GROUP

**“ETHICS, ENVIRONMENT, EDUCATION,
EXCELLENCE & EXPLORATION”**

The ESQUEL Group is proposing a new yarn made by blending a premium extra-long-staple cotton from their own avant-garde ecological farm with Lindis ultra-fine merino wool, a yarn produced at the Forest Range uplands in New Zealand, in a pure and natural environment where sheep have been bred and farmed for over 150 years.

The blending achieves an ideal balance between softness and warmth. This will allow upmarket brands to differentiate from their competitors. Lindis Ultra fine merino wool is the finest fibre in the world, even finer than cashmere. It ranges between 10.6 to 14.5 microns, with cashmere ranging from 13 to 15.5 and standard wool ranging from 16 to 35 microns. Lindis Merino is one of the best naturally elastic fibres in the world due to its unique helical molecular structure.

It is naturally breathable and hygroscopic, making garments very comfortable to wear, providing thermal retention and a super soft hand-feel resulting in a very precious, luxurious and exclusive product.



ESQUEL GROUP presents a new product conceived around Lindis Wool, the finest non-museled merino wool fibre in the world, finer than pure cashmere - 10.6 – 14.5 micron from New Zealand blended with premium long-staple cotton 60s/2
80% Pima Cotton 20% Lindis Wool

The result is a yarn with excellent elasticity, naturally breathable, super soft with excellent thermal retention, light, comfortable, luxurious and elegant.

www.esquel.com



ZHEJIANG ZHONGGING TEXTILE

ZHEJIANG ZHONGGING TEXTILE is committed to the development of high-grade natural fibre yarns and relies on continuous product innovation, stable quality assurance and



excellent after sales services. It ranges in China top 500 enterprises for competitiveness in textile in the Chinese Textile Industry Association.

New this season:

Modern - a 50% Mercerized merino wool 50% Cotton – 19.5 micron. Its special processing creates a high-quality yarn with key characteristics featuring: good moisture absorption & sweat transfer, an excellent elasticity, strength, good pilling resistance. The yarn is exquisite, smooth, breathable, skin-friendly and fashionable.

Cashtouch - a 100% mercerized superfine merino wool 30Nm/2, 36Nm/3, 48 Nm/2. A super soft and delicate yarn with outstanding elastic strength, a cashmere hand feel and a silk-like lustre.

Pleasure - a 100% merino wool 48Nm/2 and 6 Nm/2, 16.5 micron. The product features good moisture absorption and sweat transportation, a good elasticity, and is total easy-care and machine washable.

Amara - 70% Mercerized superfine merino wool & 30% silk – 17.5 micron. This yarn has a great hand feel and a good evenness. The silk content brings brightness and shine, making the yarn fashionable and elegant.

www.zdtextile.cn

XINAO TEXTILE GROUP DEVELOPING YARNS THAT PROVIDE THE HIGHEST LEVEL OF COMFORT

Merino wool is the ideal choice for the manufacture of base-layers, as it provides breathability, has a natural elasticity, moves with the body irrespective of the type of sporting or leisure activity. It has good Odour Management Control (OMC) properties, because Merino wool absorbs around 30% of its weight in moisture before it feels wet, therefore prolongs the on-set of bacterial growth.

.../...



New products this season:

Rattan – a wrap spun yarn produced by using the latest wrap spinning technology. The yarn is made by wrapping around an 80% ultrafine merino wool core a 20% nylon filament. The yarn has a smooth surface appearance and a high durability. Brace is a second version of this yarn, 90% ultrafine Merino and 10% nylon.

Skinny – Unique elastic polyester is used to wrap ultrafine merino to give knitted fabrics an excellent stretch recovery, machine washable in accordance with Woolmark specifications

Feather – made from a blend of 60% merino extrafine wool and 40% polypropylene, Feather is a quality yarn durable in weight with a good insulation properties and a smooth and new appearance, available in 1/50 Nm.

To respond to the increasing interest and demand for sustainable clothing, Xinao Textile Group has developed a range of yarns aimed at addressing ethical fashion.

For circular knitting:

“Organic” – 100% extrafine merino wool 1/50 & 1/60 S Nm. The organic range is made from yarns, which have been certified by the Textile Exchange Organisation. They are machine washable in accordance with Woolmark specifications.

“RWS” – 100% extrafine merino wool 1/50, 1/60 and 2/72 S Nm. This range of yarns is grown on farms that have achieved the Responsible Wool Standard in accordance with the requirements of the Textile Change.

“Hope” – 55% extrafine merino wool – 45% recycled polyester 1/50 S Nm. To make the wool component machine washable no chlorine is used.

For flat-bed knitting:

“Eco” – 100% extrafine Merino wool – 2/30, 2/36, 2/48 S Nm. The yarns have been machine washable treated with a new shrink proofing which does not involve the use of chlorine or other halogens in the process so that no Absorbable Organic Halogens (AOX) are formed, offering a more environmentally friendly solution.

www.xinaotex.com



HAOYE

Haoye define themselves through their flexibility and dedication to customer service. Haoye achieve this through providing both stock service and in-house development, which not only allows for shorter lead times on sampling, but also ensures that its evolving creativity keeps pace with the speed of an ever-changing market. Haoye provides new collections for each season in a versatile and creative way that meets developing trends.

These collections include: Total Easy Care, Air Yarn, colourful linen and acrylic blends in addition to many other styles and items.

Since 2006, Haoye has worked closely with Uniqlo on new yarn developments, including a wool-blended yarn with a 0.9D ultrafine acrylic. However, with their commitment to evolution and market pace, Haoye has gone on to create a Total Easy Care Merino yarn, which has been an on-going collaboration with Uniqlo since 2010. The yarn is 100% natural, has excellent temperature and moisture management qualities, has anti shrinkage and anti-fading qualities and is a Total Easy Care product. Up-to-now this product is recognized and used widely within the international markets.

In their Easy care series they offer pure TEC wool and TEC Wool/acrylic with stock supported service in 2/30nm and 2/48nm.





STRATEGY,
INNOVATION,
RESPECT
FOR THE
ENVIRONMENT

**WHAT ARE
THE EXHIBITORS
SAYING?**

CONSINEE GROUP
China's First Smart factory
in Cashmere Yarn Industry

Since its foundation in 1999, Consinee Group has purchased over 40 of the latest and most advanced Italian automatic production lines and has recently integrated the dyeing and spinning of woollen, worsted, semi-worsted and fancy yarns into its operations. With an annual capacity of more than 5000 tons, Consinee Group is regarded as the leading enterprise in the high-quality cashmere yarn industry, in both China and the rest of the world.



Despite Consinee Group acting as an industry leader, it is not merely limited to this goal and recognises a need to be ever evolving and better able to adapt to the needs of an ever-changing market. Like other traditional industries, the textile industry is labor intensive, and Consinee is experiencing the challenges associated with growing economies, increased commitment to workers living standards and providing fair and competitive wages.

The mobility and activity of the current labour market seem to be receding, but conversely, the demand for labour is still increasing. In the future, Consinee

group sees that they may not be able to recruit an adequate workforce, even though compensation and welfare standards are rising. So it is now inevitable to innovate spinning facilities and equipment to join a revolution in 'smart' manufacturing, something Consinee has already committed to.

The main construction of Consinee's "smart" factory started earlier this year, with ten 'smart' production lines being imported directly from Italy. The very first "smart" factory in the Chinese cashmere spinning industry is expected to go into operation by the end of 2018. It will combine 'smart' production, packing and warehouse management systems. All this development will substantially replace human workers for automatic and digital operations.

To some extent, the smart factory could be called an unmanned factory, one without lights on! Labour saving is only one advantage, next to many other cost-saving benefits. More importantly, the intelligent operation will help to improve the product quality and maintain the production accuracy to avoid deviations as an outcome of manual operations.

The realisation of 'smart' manufacturing depends on cognitively talented workers rather than manual workers, bringing a higher demand for technically and well-educated talent in the staff. Consinee Group, therefore, is determined to upgrade the staff team and build a high-competence employee team that can be adapted to an intelligent production system.

'Smart' production lines will save labour cost and improve production process efficiency. For example, to produce 1 kilo of yarn, it will reduce energy costs by 25% and labour cost by 80%; it will raise production efficiency by 35%, by sharply reducing production lead time from 35 days to 25 days. Also, 'smart' production accelerates the process of information management in the production procedure.



To coordinate the 'smart' manufacturing system with standard information systems, Consinee Group has applied a more efficient ERP operating system, connecting production with stock and sales departments. Therefore, through this ERP system, all the information can be flowed and shared in real time, applying error-proofing methods, intelligent scheduling and logistics optimisation technology, a smart system is formed, and its ultimate goal is to realise the intelligence of production, logistics and sales.



This so-called Industry 4.0 trend, to the extreme, is to build "unmanned factories". The whole manufacturing, industry chain and intermediate links are connected so tightly as to minimise waste and maximise efficiency. Taking the lead to bring intelligent technology, Consinee Group intends to become the leader of the 'smart' textile industry in China.

UPW

S/S 2019 "Feeling good is the key"

The UPW Spring 2019 collection includes yarns that look after the environment (Eco group), yarns which look after the wearer (Wellness group), and yarns, which have a more specially crafted aspect (Unique group).



These new yarns sit alongside the core cotton, silk and linen blended qualities. This season, UPW features lots of new finer smooth yarns, tiny textures like crepe and irregular slubs and refined colour-effects. Along with upgraded fibres, all sourced responsibly, the collection has a focus on marketing messages to help the retailer engage with the consumer.

Healthy yarns

- **Spa** – a wellness yarn influenced by the cosmetic industry, using a seaweed-based fibre with cotton.
- **Therapy** – utilising the well-being properties of copper.

Natural Dyes (safe for the skin)

All dyestuffs used in UPW yarns are certified as safe, the UPW collection team found that natural dyes (such as vegetable dyes) can be problematic to achieve commercial colourfastness

and metallic mordents are required, which are not good for the skin. So natural dyes are often not as caring as they sound, which is why UPW went down the undyed route for last fall.

Traceability (farm to consumer for vertical companies)

Traceability will mainly kick-in for UPW for the next FW collection in June, with a few new initiatives. For this spring collection UPW, of course, trace everything, but to be genuinely certified traceable then the paper-trail needs to be complete, not just the intention. Creative, inspirational yarns that have Eco credentials.

- **ReEco** – new core yarn using recycled cotton and recycled polyester.
- **Zen** – textured yarn using recycled cotton and recycled polyester.
- **Sensual** – sustainable yarn using organic cotton, FSC viscose and energy-saving Sorona.
- **Sensus** – stretch version of Sorona, FSC viscose and Modal, which are all sustainable fibres.
- **Delta-9** – a raw hemp/cupro blend, a hemp base sustainable product. Hemp is a high yield natural crop which takes 50% less water than cotton to produce.
- **Jute** – a rustic yet soft yarn using recycled cotton, and eco-friendly Gracell™.
- **Ultimate Chine** – a colour-effect yarn using organic cotton.

UPW would like to work around the idea of natural fibres, such as silks, linens, ramies, superfine merinos and special cotton that can also work in this group. UPW is proud to upgrade superfine cotton to SUPIMA® covering several qualities, including:

- **Eden** – SUPIMA / cashmere.
- **Ether**
A 2/80Nm SUPIMA/superfine merino.
- **Elegant**
A 2/60Nm SUPIMA/superfine merino.
- **Caress**
A SUPIMS/superfine merino chenille.
- **Nouvelle Fine**
BCI cotton/cashmere.

Innovative/future forward yarns

(from functionality to sustainability)

- Intelligent future yarns that are sustainable
- Sensual, Sensus, Delta-9 and Jute yarns above.
- Responsible, innovative yarns

YARNS & COLORS

Relying on market trends and moving to eco-products

Yarns & Colors are continually studying market trends and both searching and forecasting the latest shifts in fashion. Their fashion forecasting results are based on first-hand data collected from worldwide high-end fashion customers. After processing this seasonal data, they have defined four segments for the current market and translate these into the company's seasonal collection focuses.





By using data analysis and smart production, Yarns & Colors can provide faster reaction time, shorter production time, reduced inventory and ability to receive and make use of customer feedback genuinely.

- Firstly, the 'Snowy' family of yarns remains as Y&C's core yarn. This article has a large colour card, and a wide range is held as stock service.
- Secondly, the new dyeing skill for natural wash sustainable products. This dyeing technique creates a vintage look product and is available in a broad range colour palette.
- The third is Indigo linen dyed product. YARNS & COLORS lead the way with this product type and are presenting more amazing colour cards and stitches to highlight the indigo and vintage story to the visitors this season.
- Their last group this season is their fancy yarn collection. They are presenting a new concept of reflective and glow in the dark yarns, superfine velvets and superfine knot yarns this season.

All of these yarns are to offer designers fresh and inspirational ideas, allowing them to push their products forward.

Yarns & Colors strive to lead the market with the concept of diversified products & prompt service. They aim to be one of best knitting yarn and product suppliers among the global knitting industry.

Yarns & Colors are also proud to launch two of their latest eco products:

PAPER YARN is produced from natural fibres of Manila hemp (Abaca); which is harvested every 3-8 months for 10 years. The Manila hemp is refined then produced into thin sheets of paper later split into narrow tapes to be converted into Hemp Paper Yarn. It is an environmentally friendly biodegradable material. PAPER YARN is exceptionally light. The high porosity and other natural characteristics give the yarn qualities such as natural coolness and heat retention, high moisture absorption, quick drying and deodorising.

Features of PAPER YARN:

1. Extremely lightweight (weight ratio higher than cotton yarn)
2. Excellent breathability (microporous structure)
3. Natural antibacterial function preventing odour and minimising allergy reaction
4. Heat insulation and retention characteristics suitable for both hot and cold weather
5. Natural fibres, minimal fluffs, ideal for sensitive skin
6. Natural UV Protection blocks out up to 98% of UV
7. Twice the water absorption ability, when compares with cotton. Making your skin feel dry and comfortable at all times.
8. Washable like natural cotton and hemp.

The second one is TOMICA.

'Natural Wash' is a new technique in dyeing processes. All the dyeing materials are completely ECO and offer a new concept of vintage effects for knitwear. The product can also be recycled. Through Yarns & Colors' commitment to sustainability from design through to

production, they have been awarded Intertek's Green Leaf Mark.

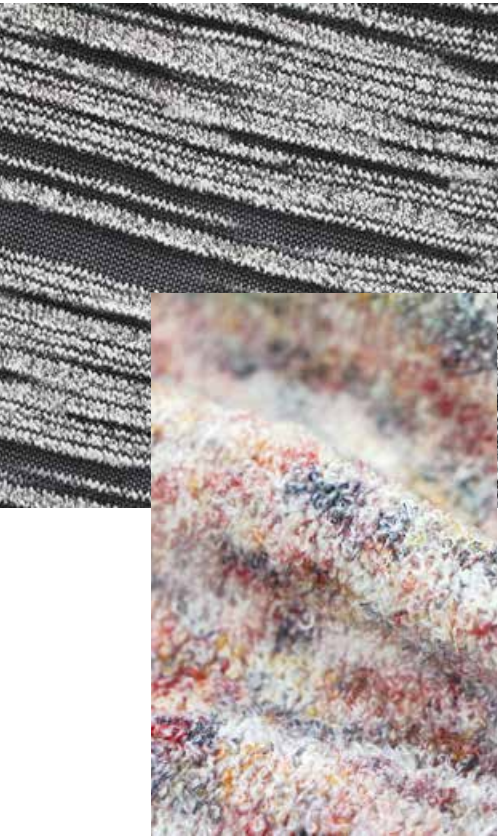
GTIG HUBO

Fast delivery and quick reaction

JIANGSU GTIG HUBO is a member of the GTIG Group and a worldwide leading yarn supplier. Their broad range of yarns includes Worsted Yarn, Semi-Worsted Yarn, Fancy Yarn, Cotton Yarn and Woolen Yarn. Fast delivery and quick turnaround is a large part of their global strategy and strength. GTIG has set up their international design office in Hong Kong working with global designers on new yarns developments through to garment design.

As a socially responsible company, they are committed to bringing sustainable developments and environmental protection within their product range. Strictly checking operations from raw material, spinning, to delivery,





GTIC HUBO has attained GRS (Global Recycle Standard) and OCS (Organic Content Standard) certifications.

This season they will be promoting an eco-aware book using BCI cotton, organic and recycled elements.

Besides classic BCI cotton yarn, they will use marl, mélange, space dye and slub to get different colour effects.

For the organic series they will blend natural fibres, linen and silk to make a high-end collection with elegant appearance; recycled fibre will mix with shiny & colourful metallic and multi-colour neps to give the yarn a delicate look.

For this Spring/Summer 2019 season they have four directional new trends to present:

Summer Haze – Focusing on sheer yarns with a feminine sensibility, gauzy tissue-like hand feels, subtle shimmer surfaces through irregular yarn sizes and extreme thick & thin effects.

Surface – Textural surfaces are key and range from glossy sheer shimmer marls, fine gauge linen flecks, extremely thick and thin effects through to colour change tapes and natural linen marls.

Clean Lines - Yarns are sporty and range from compact nylons with sleek finishes and marl effects, sheer filament yarns through to binding techniques, towel surfaces, and feather tape edges.

In Bloom – Using vibrant springtime colours to create new colour combinations, yarns range from gradient colour change and spray dye effects, metallic rainbow chains to novelty metallic streaks and subtle sequin shimmers.

Their two key promotional lines — HUBO™ and MASTERY™, are aiming to meet the various customer needs for different markets. HUBO™ yarn collections is an integration of seasonal trends and materials, and their consolidated manufacturing experience translates to endless innovative products in different categories. MASTERY™ yarn collection is a combination of the latest Italian spinning technology, and a more extensive use of colours & natural fibres brings a unique and luxury collection of high-end yarns and concept.

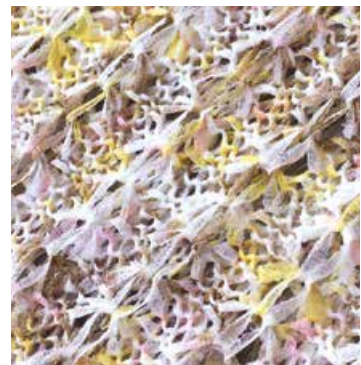
BEST SHAN

Specialised in chenille and sequins yarns

Best Shan is an exclusive Taiwanese Investment Enterprise with manufacturing plants in Shanghai, China. The company has always been dedicated to innovation and development of fancy yarns.

Best Shan offers a diverse range of yarns for Spring/Summer 2019, which include superfine chenille yarns and other yarns with counts reaching 1/32~1/18NM.

New raw materials have a particular focus this season, using various kinds



of natural plants and organic, eco-friendly fibres, such as blending ultra-fine sequins with organic cotton, and Net tape yarns cut into a wider range of widths.

XINFANG GROUP

Associating with hilaturas ferre for recycled cotton

Jiangsu Xinfang Science & Technology Group has been committed to the research, development and production manufacturing of the textile industry



since it was established in 2005. Xinfang's main products are mostly fancy, semi-worsted and woolen yarns.

There is a growing market demand for eco-friendly products, and as a socially responsible company, Xinfang Group is actively striving to provide customers with a variety of functional qualities, together with the development and production of diversified products, such as environmental protection, health and sustainable developments. All kinds of functional fibres and yarns are organically combined, so that the yarn has good function of moisture absorption and sweat releasing, anti-bacterial, temperature control, health care, and flame retardant safety.



Xinfang has been certified by GRS for the past 8 years and are faced with the dilemma presented by market demand for recycled products where there is always a shortage of stock and late delivery, as no company dares to keep too much stock in hand.

Xinfang takes the challenge to be the first company to hold an extensive inventory of recycled cotton. In the coming spring and summer season, Xinfang will work closely with HILATURAS FERRE. HILATURAS FERRE is a certified supplier of recycled cotton, and develop and provide various kinds of recycled cotton blended products,

such as loops & T/T yarn, covered yarn, wrapped yarn, sarry yarn, lily & tape yarn. By doing so, Xinfang hopes to provide their clients with recycled cotton products in a vibrant colour palette and with a fast delivery service, to really achieve a perfect combination of environmental protection and fast fashion.

For the coming season, Xinfang will launch three collection directions: eco-friendly yarns, soft & cosy yarns, and chunky yarns with rich colours

SHILEAD
A model in environmental friendly innovations

By using high-grade technology and techniques to establish a systematic quality management system in accordance with international quality standards, the company has gradually developed a professional enterprise putting its efforts on environmental protection.

Significant investment is being put into R & D in order to reduce and eliminate pollutants released into the environment during dyeing processes. Shilead is the first group of enterprises, which



has passed the OE and GOTS certifications of organic cotton, as well as the GRS certification for globally regenerated fibre.

Shilead is also the first group of enterprises who have developed sustainable products by using organic and recycle fibres in China.

Shilead uses mainly eco-friendly fibres in their new collection. Tencel and natural luxury fibre-spun silk, added with a new bimolecular composition: Sorona, a biological environmentally friendly fibre with a good retention property. It transforms the natural and environmentally friendly fabric into a new luxurious appearance.

Shilead has also developed a series of fancy yarns by using eco-friendly and recycled fibres.

The new yarn - QIS-XLD410, 1/52nm, 77% Organic Cotton 23% Polyester, is an organic extra fine cotton with a dry handle and subtle shine. GOTS and Oeko-Tex 100 certified creating an environmentally friendly dyed, sustainable and innovative product.



KNITWEAR MANUFACTURERS AT THE SHOW

WANZIMAN KNITWEAR

Wanziman Knitwear was founded in 1983 with three wholly owned sweater factories comprising of a total work force of 3000 workers and a monthly capacity of 830,000 pcs knitted pullovers/cardigans.



The company is specialised in producing high fashion fancy ladies and men's knitwear, ranging from 3gg to 16gg and export to Europe, USA, Australia and New Zealand, working with leading international brands such as Anthropologie, Bestseller, COS, Other Stories, Arket, Hobbs, J.Lindeberg, Massimo Dutti, MaxMara, Diesel, Halston and Ralph Lauren.

Wanziman have an in-house R&D team that develops fashionable styles with innovation in yarns and knitting techniques to meet the needs of their mid to high-end customers.

By continually adopting modern technology, Wanziman keeps themselves on the leading end of knitwear machinery. They are now specialized in ADF and Whole Garment technology in addition to other varieties of manufacturing such as cut & sewn, woven knit mixed, intarsia, boiled wool and stone wash products. Their in-house quality control, merchandising and sales teams monitor the quality of bulk yarn carefully through to export ensuring the highest quality product and on-time delivery.

www.wanziman.com
<https://youtu.be/bHz9nAX5wBY>



JING QINGRONG

*Manufacturer of knitwear,
jersey and woven*

Founded in 2004, Shanghai Jing QingRong Garment Co. is a standardised knitting company specialised in producing a wide variety of knitted garments. They have 4 manufacturing bases and a monthly production capability of 1'500'000pcs, in China and Cambodia.

With increasing development, JQR is focusing on innovative technological development and its applications.

JQR can handle printing, embroidery, washing and woven mixed sweaters from 3GG to 16GG with a minimum order of 500 pieces.

The company also have jersey and woven factories, which can produce a wide range of styles.

With increased awareness of the importance of sustainable development, JQR supports their customers in the planning of how to recycle their products. Their in-house designers create exclusive styles each season with this concept in mind. Currently, JQR is focusing specifically on shortening production lead times and assisting their clients in promoting sales.



SHANGHAI HUAXIANG WOOLLEN DRESSING COMPANY

Launched in 1991, and located in Shanghai, Huaxiang exports to the USA, Europe and Japan, with production ranging from mass to high-end markets.

Huaxiang have overseas designers and in-house teams to provide innovation, design and R&D support. Working mostly on Stoll machines including the new ADF model, Huaxiang specialize in fancy jacquards in multicoloured patterns.

Huaxiang works with a variety of OEM and ODM clients, with seasonal collections presented to suit different styles of customer.



NIPPON STEEL & SUMIKIN (HK)

NSSB (HK) has 2 factories in Shanghai and Guangzhou, with Japanese technicians and specialized quality control staff, offering the best-quality garments to their clients.

The head office Nittesu Sumikin is located in Tokyo with over 100 designers creating new products and supplying trend information to clients. The design team follows the latest fashion trends from Europe and presents their own collections every season.

For the coming season, NSSB (HK) is focusing on early spring and late summer seasons with a variety of garments in fine 16 GG gauge with rib stitches, distressed effects and various crochet techniques.





INTERPRETATION
OF SPINEXPO™
COLOUR TRENDS
BY OUR
DESIGNERS

RORY LONGDON

MRC & RORY LONGDON is a collaboration of tradition and creativity.

The historic knitwear manufacturer MRC was founded in Italy in the late 1950s and with a continual evolution through new technology, research of stitches and techniques, it strives to produce unique knitwear pieces.

RORY LONGDON is a British Knitwear designer who has gained his experience in the luxury sector by designing knitwear with a very creative and hands on approach. This collaboration combines a profound knitwear know-how with a creative design approach, leading to an exciting and fresh take on knitwear.

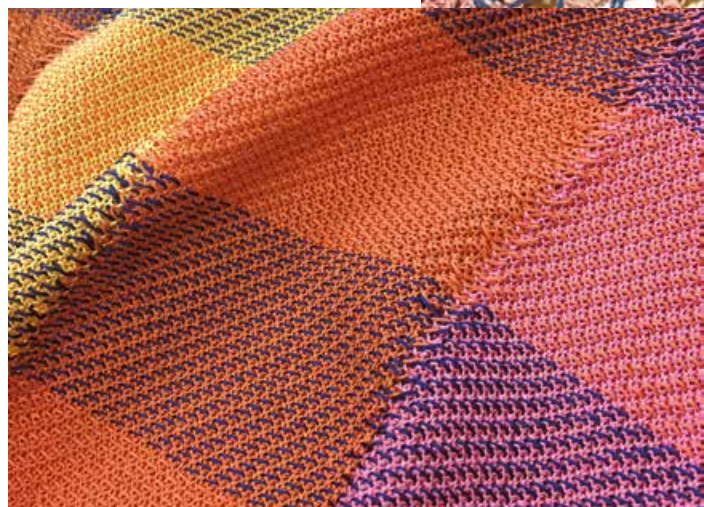


RADIANCE

Yarns: *Xinnuo, Sawada, Topline*
A modern Safari.

Sun-bleached linen tents are pitched on raw white sands, in the midst of the Moroccan desert. Canvas awnings cast ombre shadows on the uneven sand.

Fabrications are understated yet luxurious. Semi-sheers are refreshed with micro-weaves and tonal intarsias, while tone on tone micro-stitches are rendered luxurious with subtle sheens. Yarns are entirely natural, heavily focused on linen and cotton. We create body to sheer cottons with paper blends.



IKEBANA

Yarns: *UPW, Best Shan, Winning*

Looking through the sketchbook of a master of the Ikenobō School. Hand-painted watercolours on Kozo paper, tell a story of a delicate art. Stitches are ethereal like the delicacy of these crafts, semi-sheers, watercolour jacquards, and delicate structures. Finishing's and trims are studied to the finest details, of utmost femininity.

Inspired by artist Nendo's - Kaleidoscopic Ikebana - the fabrications are given muted shimmerers by encasing paillettes inside the knit.

Recalling Nendo's use of "ivy mirrors".

The pastel colours bleed into one another like watercolour brush strokes.

Yarns are all fine weight. A presence of viscose - both matte stretch and high shine fluid yarns. Semi-sheer qualities - linens with subtle textures, shine silks and interesting natural/man-made blends.





MAHOGANY

Yarns: *Zhongxin, Hubo*

Inspired by architectural tree houses, where winding branches are used to structure architectural frames. We simulate the effect in precision stitches. A play of natural materials manipulated into man-made structures.

Fabrications are structured and planned. Lattice works mimic wicker chair formations, while branch formations create borders and frameworks. Stitches are precise and systematic, mixing multiple textures together - enriched with methodical handwork.

Yarns are all natural. Crispy and dry hand feels, in fine to heavyweights.

Matte cotton worked beside high shine viscose.



GEODESIC

Yarns: *Yarns & Colors, Hotta, Polyace*

Exploring the Tropical Biome at the Eden Project, we find a fascinating juxtaposition of lattice frameworks and tropical plantation. Thermoplastic cells overlap with lush banana leaves, inspiring a story that sees a fusion of man-made graphics and natural formations. Fabrications are a study of graphics; geometrically planned structures are mixed and matched with botanically inspired jacquards and stitches. Like

the works of artist Patricia Urquiola, contrasting elements of organic, plasticised, structured and natural, collaborate for a modern aesthetic. Yarns are a hybrid of both man-made and natural fibres. From techy nylons to fine cotton and wool blends, plastic transparencies are offset with natural linens, while viscose is present in both matte and shine.

STRELITZIA

Yarns: *Armonia, UPW, Sawada, Wellmay, GTI*

A direction divided between:

AFRICA

A journey through Africa, from Benin to Cameroon, Zulu to Madagascar. A rich journey of artisan and craft. An eclectic mix of material and colour, create a story of luscious fabrics and techniques. The fabrications are artisanal yet modern. Wooden and shell elements are used to enrich dimension, while fringing and crochet give a sense of luxurious handwork. The yarns play on varying weights - mainly cotton and linen focused, with touches of silks and raffias to add new dimensions of shine and matte.

YVES SAINT LAURENT

The Khama, BouBou, Djellaba and Pyjama are garments that bare symbols and meanings. Every thread is woven with purpose, telling stories of the wearer's life. Wrapped, crinkled and tied these garments are both comfortable and practical.

Fabrications are organic; hand loomed, imperfect yet perfect. Subtle textures, hand woven stripes and featherweight padding, focusing on a story of yarns that are as natural as we can find - linens, cotton, silks, all in their purest forms. Natural slubs, imperfections, vegetable dyes, mini boucle's all used to create fabrics that are naturally unique.



STEVEN OO

Steven Oo was born in Myanmar and studied in the USA before establishing himself as a designer in Shanghai.

Steven refers to his personal knitwear designs as knitwear architecture because of a deeply held interest in surface textures, structural silhouettes and innovative stitches. His design philosophy is to focus on stitch development before thinking about silhouettes as he believes there is more room for play in innovating stitches.

A lot of Steven's work draws inspiration from the geometric and repetitive patterns from nature, architecture, and interior design. Steven often combines his knowledge of machine knitting and hand knitting to come up with unorthodox methods in designing knitwear.



RADIANCE

Yarns: GTI, Hotta, Consinee

Radiance brings to mind strands of light shining through a misty fog. The very neutral but warm palette was chosen based on the idea of the morning sun shining through the mist. Silks, linens and cashmere make unlikely friends in this combination of stitches. The silk serves as the radiant aspect while the linen offers structure and drape, with the cashmere providing comfort to the wearer.

Taking inspiration from the idea of strands of light, this capsule is a study of integrated fringe techniques. There are fringes created from inlays as well as from cutting the float of double-bed knitting structures. Fringes often featured in spring-summer collections tend to lean towards a more casual aesthetic, while in this case, the luxuriousness of the yarns combined with advanced knitting techniques will only leave the wearer radiating in a crowd.

IKEBANA

Yarns: Wellmay, Sawada

The art of Japanese floral arrangement sparked research into different Japanese traditional crafts. The floral stitch patterns became the source of inspiration for this group. The knitting technique utilizes an inlay method to recreate the traditional floral patterns into almost an abstract look at the floats within the knit, clearly visible from both inside and out, creating natural waves of multiple spring pastels.

The backdrops are also created using the same inlay knitting technique. However, the stiffness of the Raffia yarn creates a very stable structure that can serve as a backdrop or used in home textiles. Ikebana as an art form explores the hardness and softness of plants and flowers and this collection attempts to display both soft and hard using the same technique but with different yarns.

MAHOGANY

Yarns: *Sawada, Wellmay, AA Global*

The earth as the starting point of an inspiration can take a designer's mind to many different places, but in the case of Mahogany, the inspiration comes from the textural patterns of wood grains. By utilizing different types of yarns not normally seen together, this capsule collection aims to bring a modernity to something very earthy. High stretch nylon lily yarns mixed with fine raffia yarns create see-through structures. The pattern cutting is minimal, to showcase the wood grain inspired textural patterns on the knit.



GEODESIC

Yarns: *Armonia, Hubo*

Chaos is the inspiration for this capsule featuring an artful explosion of soft colours with bright colours as accents. Just as different colours would react if dropped into a fluid medium, there is an exploration of dip dyes using digital printing, with the brighter colours using a special 'glow-in-the-dark' yarn embellished with beads. The garments are created with an artist muse in mind. It is as if she wore plain clothes while working on an art piece and the clothes were naturally stained in an artful way. The silhouettes are very simple as the showcase is on the digitally printed watercolour artwork with hand beading and embroidery techniques.

STRELITZIA

Yarns: *Shilead, Hubo, Lugang*

The strong colours inspired a menswear collection with a study on tribal carpets. Not just regular tribal rugs though, these look as if they were melting in the summer heat just like a multi-coloured ice cream. Many different textural yarns were chosen and the jacquard itself has multiple types of stitches to create surface textures in addition to the colour explosion. The whole idea of balancing contrasts from this season inspiration.



KAI SO

Kai So is an independent knitwear designer based in Hong Kong with a wealth of experience working in high-end cashmere companies, designing and product developing for the worlds leading brands.

Kai's handwriting displays a well-defined ability to embrace often-polarised styles and influences, stemming from a wide-ranging interest in the Arts. Kai blends and balances East and West in a way that displays an understanding of these often opposing styles. Kai embraces Asian heritage at the same time as drawing inspiration from Asian popular culture.

Overview

This collection captures the essence of three women and their conversations with romance and love. Dreams are what drive passion and imagination, romance is our opportunity to risk all and leave lasting memories. This collection reflects powerful conversations and challenging memories, something encapsulated in the purity of fashion from the early to mid 20th century.

RADIANCE

Yarns: *Xinnuo, Consinee, GTI, Serenata, Galaxy, Winning*
 'Radiance' is soft power and defines a woman with pure dreams of another lifestyle, one of the past and not the future. The artwork is classic and reflects a cosmetic allure of romance in the 1940s to 50s. Cashmere, Linen, ramie, and metallics represent a young professional female with an easygoing nature.

MAHOGANY

Yarns: *Xinnuo, Hotta, AA Global, Kyototex, Winning, Hubo*
 'Mahogany' shows strength and elegance, reflecting a pioneering woman of the 1940s and 50s, driven by a desire for adventure. She seeks the dangers of safari and the opportunity and prizes ever present in the heyday of archaeology. Whether the rain forest or savannah, the collection embodies style, strength and romance. Merino wool, Silk, Tencel, Nylon/ Polyester, and metallics present a young successful female with a different outlook.

IKEBANA

Yarns: *Hotta, Xinfang, Sawada, Galaxy, Zhongding*
 Ikebana, the Japanese for 'living flowers', can also be known as Kado or 'way of the flowers'. One of the three Japanese arts of refinement, Ikebana embraces the viewing and arranging of plants based on their simplest forms of beauty. Our story reflects the discovery of inner beauty. Ikebana defines the struggle of the introvert to discover their inner self. Ikebana represents the quiet girl who finds her romantic self and uses this as strength to realize her dreams. Cotton, Viscose, Nylon elastic, and Metallics pay homage to the rich cultural heritage of Ikebana; 'way of the flowers' and 'way of the inner woman'



GEODESIC

Yarns: *Xinao, Lugang, Xinfang, Topleveline*

Varied skills define our success in the 21st century, the younger man seeks to express his talent, knowledge and skills. A new generation of wearer and working style merge to create a fashion that blends the statement of smart and the casual feel of sporty, to define a new direction.



CECILE

FEILCHENFELDT

Founder of the CECILE FEILCHENFELDT KNITWEAR STUDIO PARIS, Cecile has worked for 20 years as an experimental Knitwear Designer, working on trend and forecasts, Haute Couture, special pieces for Prêt-a-Porter as well as the car industry.

Her work is known for the highly sophisticated combination of tradition, know-how, technical skills and a today's interpretation.

For SPINEXPO SPRING/SUMMER 2019, CECILE FEILCHENFELDT imagined a huge game board representing the colours of the season and their themes. Underlining her statement "NO SUMMER WITHOUT A HAT" the coloured surface became a catwalk for hats and patterns giving the yarns and their different qualities an inspiring, playful scenery.

Yarns: Eastar, Shilead, Best Shan, Zhongxin, AA Global, Winning, FashionYarn, Sawada, Topline, Yarns & Colors, Xinnuo, Galaxy, Filix, Best Leader, Shi Kwan, Consinee

RADIANCE

Wonderful, huge, oversized straw hats representing the summer at its best. Looking for shadow overlooking the seaside

IKEBANA

Beautiful dégradée of romantic shades of colours and never-ending shapes around your head imitate and emphasise the triumph of nature. Flowers everywhere. Petals everywhere. You feel the power of nature.

MAHOGANY

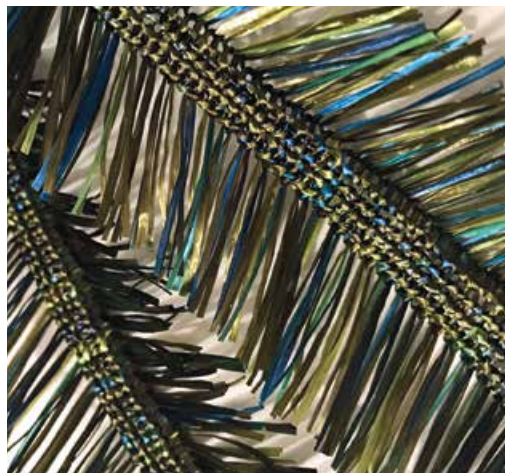
Inspired by the headpieces of the legendary samurai but lost through ornamental knots and beads. This story becomes an unknown fantasy in greens and earth tones.

GEODESIC

Playful and childlike but at the same time very calculated and skilful. This piece is exaggerated and a stunning piece of architecture for the head.

STRELITZIA

The generously wrapped summer turban is back with deep colours and some dried out zones that come with a warmth of a sunny day.



KATIE HANLAN

Katie Hanlan is a former knitwear designer from John Rocha in Ireland and a regular stylist for SPINEXPO.

Katie runs a studio in Dublin where she works on sculptural knitwear pieces through to home textiles and garment design. She specialises in knitted fabric manipulation, combined with hand techniques such as hairpin crochet and innovative macramé.



RADIANCE

Yarns: *Yarns & Colors, Sawada and Xinnuo*

Delicate sheer layers and pleats in crisp linens and beautiful paper yarns in muted tones create a sophisticated silhouette

IKEBANA

Yarns: *Takizen, Best Shan and Zixin*

Inspiration comes from the structure and simplicity of beautiful paper and linen yarns, combined with the beauty of the Ikebana arrangements, leads to sheer pleats with crisp folds and ribs to create delicate yet structural garments in pastel tones.

GEODESIC

Yarns: *Polyace and Yiwagoe*

The inspiration comes through architecturally inspired shapes in vibrant and bold colours. Mixed with off-gauge knits in delicate yarns, sheer knits bring contemporary garments with structured silhouettes.

M.O.H.K.

M.o.h.K Studio is a knit and weave based collaborative studio focused on research, innovation and design, founded by Helga Matos and Odina Keim who joined forces to combine their creativity, knowledge and skills.

Helga has had her own woven textile studio working on collaborative projects with artists, interior, fashion and product designers. Odina has been teaching knitwear at the University of Southampton for the past 15 years and her expertise lies in Shima Seiki programming and knitting, working closely with Shima and the University.

M.o.h.K studio's drive is to above all consider the future of textiles and work on ways of combining different disciplines to create forward thinking concepts and textiles. By researching new technologies but not forgetting traditional techniques, the focus is to create fabrics and ideas, which are innovative and well considered from, start to finish.

RADIANCE

Yarns: AA Global, Best Shan, Consinee, Galaxy, Shilead, Wellmay, Winning, Xinnuo, Yarns & Colors, Huayi

“Light of the world” comes from the concept that as a new age of Artificial Intelligence is evolving, are we able to retain what makes us human and how long will this last?

The question of whether physical and cognitive functions can be programmed and where in these questions lies our senses, emotions and soul? Is that what will always make us unique or is it really only the spirit, the “light” which sets us apart! We are very much looking at light and shadow and the difference between the different layers which make up a being.

IKEBANA

Yarns: Best Shan, Biella Yarn by Südwolle, FashionYarn, Winning, Xinfang, Zhongding

“Creative Exploration” is about the time and place in which we can explore the creativity within us. It is a place of freedom and emotion with endless possibilities, when you allow your inner self to explore.

Movement, structure and versatility is key to this story.

MAHOGANY

Yarns: AA Global, Biella Yarn by Südwolle, Hubo, Kyototex, Xinnuo, Yarns and Colors

“Belonging” explores the roots and foundations of life and of ancestral history through the concept of a tapestry of life.



How we begin to look back at the events, which make up our own stories and paths. Natural and raw but an overall sense of comfort brings meaning to this trend.

GEODESIC

Yarns: Biella Yarn by Südwolle, Polyace, Yiwagoe, Zhongxin, Zixin

“Effective Stability” looks at the merging of the manmade self-sufficient environment and the functionality of the natural structures needed for such life.

How do we use what the world gives up and combine it with what man can make to enhance natural life. Modern living protecting Nature. Tactile yet modern, gentle yet effective and endurance makes up the essence of this story.

STRELITZIA

Yarns: Esquel, Sawada, Shilead, UPW, Wellmay, Winning, Zixin

“Culture Clash” A fun and vibrant celebration of the uniqueness of different cultural values, coming together and merging with one another in harmony. Mixed cultures, mixed ideas. Combinations of traditional techniques and influences from tribal celebrations. Patterned and fun, lightweight yet powerful. The contrast of bright and bold and earthy and textured.



KEMI CLARK

Kemi Clark is a freelance woven textile designer who collaborates regularly with Spinexpo.

Working from her North London based studio, Kemi designs, develops and produces bespoke fabrics for the fashion and interior design market. As a Fabric Buyer within the fashion industry, her personal practice aims to explore the boundaries of weave and surpass what is already available commercially.

RADIANCE

Yarns: *Consinee, Xinnuo, GTI, Shilead, Zhongding, Well May, Biella Yarn, AA Global and Lugang*

Regal elegance is renewed through a powdery palette that epitomises the women of the 18th century French Court. Natural fibres dominate within complex structures.

Fabrications are multilayer, woven ribbon, pleats and smocking-like structures are inspired by the detailing of the traditional robe "à la Française".

IKEBANA

Yarns: *Best, Zixin, Zhongding, UPW and Winning Textile*

The ethereal beauty of the palette is contrasted by the boldness of the stitch; a balance is struck and translated.

Fabrics are finely woven and lightweight, but frosted textures give way to bolder areas of colour breaking the surface and it is these undulating surfaces that shape their form.

GEODESIC

Yarns: *Xinao, Esquel, Zixin, TOPLINE, Xinfang, Orient Hongda and Yiwagoe*

Modular yet unsystematic, without repetitiveness or uniformity. Designs focus on placement and composition, inspired by the forms and shapes of the Walden 7 in Barcelona. Ribs and cords lead while protruding surfaces and woven inlays are unexpectedly juxtaposed.



MAHOGANY

Yarns: *Yarns & Colors, HUBO, HOTTA, Zhongxin, UPW, AA Global, Xinsha, Kyoyotex, Eastar and Xinnuo*

The demand for raw materials and agriculture is relentless. Through design, we explore the industrial and stylised changes of our landscape, the fight between natural and manmade. Organic base textures are contrasted and overruled by structured linear pattern work. Woven in metallic embellishments have a repeated presence. High twist or steel cored yarns manipulate shape structure and stability.

STRELITZIA

Yarns: *Esquel, UPW, Regal, GTI, Sawada, Shilead, Well May, HUBO and AA Global*

A fusion of bold colour and statement material contrasts. Fabrications rich in technique and handle, combining the differing design identities across African tribal textiles. Graphic pattern work is diffused with subtle colour changes, fringing and lace techniques are combined in luxurious cloth that drapes across the body.



LAURA MCPHERSON

Laura McPherson is a Knitted Textiles, Knitwear Designer and Consultant based in England, specialising in material innovation and fabric development.

Her studio offers a range of services from trend forecasting, future thinking concept developments and presentations in colour, yarn and materials.

Laura's work aims to challenge the perceptions of knit and embraces an experimental approach to materials, yarn and dye techniques. Her work lies at the intersection of textile innovation and new materiality, adopting a hybrid approach to technologies and techniques old and new, creating fabrics to inspire and excite.



RADIANCE

Yarns: *Best Shan, Huayi*

An evolution from the exploration of natural forms, evoking clarity and purity whilst exploring unexpected yarn and material combinations. Paper yarns are combined with natural cottons, linens and silks. Knits are cast, coated and dipped, exploring ceramic like qualities to create one off precious pieces, evoking intrigue and mystery. Details are taken from nature and explore gathering, textured surfaces and delicacy through the integration of knit, plaster and silk chiffon.

IKEBANA

Yarns: *Winning Textile*

The delicate feminine qualities of Ikebana are realised through lace like structures, stitch and devoré. There are subtle contrasts between transparent and dense areas, executed through the application of yarn and technique. Organic and flowing, fabrics are light to the touch and the beauty is in the detail, referencing garment structures and trims. Painterly qualities are achieved through subtle dyeing and paint on effects.

MAHOGANY

Yarns: *Kyototex, Wellmay, Yarns & Colors, Sawada, Biella Yarn*

An exploration of a modern take on woven basket like structures, blurring the lines between knit and weave. Lattice like structures and pockets support the integration of non-woven fabrics and wood to create structural form. Colours are sophisticated and considered, enhanced with subtle metallic yarns and foiled elements, taking the natural palette to another level.

GEODESIC

Yarns: *Esquel, Orient Hongda, Xinao, Armonia, UPW, Hubo, Topline, Xinfang, Yiwagoe, Fortune, Zixin, Polyace, Winning*

A challenge of the properties of yarns, exploring plasticised qualities, through yarn manipulation and mixed media application. Block colour and shape is distorted to create crumbled and folded forms. This is achieved through print, heat setting and embossing, merging transparency with dense qualities.

STRELITZIA

Yarns: *AA Global, Armonia, Esquel, Hubo, Sawada, Shilead, UPW, Wellmay, Yarns & Colors*

Focus on bold colour combinations and a hybrid approach to pattern and texture. Elements of woven qualities form jacquard like patterns and work alongside heat transfer print techniques to explore colour on colour. The combination of raffia and tape yarns gives structure and richness to the direction.

UPW

Genuine Stock Support

All of our yarns, in all of our colours, are always held in stock.

It is quite a simple concept, backed up with a massive inventory. It allows you to be super flexible in what you order, super fast and efficient with both sampling and bulk, and with minimums being just one cone you can afford to be creative with colour too.

StockStore

Select, check and buy our entire collection online.

It is a whole new way to help you manage your sampling requirements, in real-time.

Stand# D4
SpinExpo Paris



www.upwhk.com

