



SPINEXPLORE

SPINEXPO™ SHANGHAI

AUTUMN/WINTER 2020

3-4-5 SEPTEMBER 2019

SHANGHAI WORLD EXPO CONVENTION & EXHIBITION CENTRE
N° 1099 GUOZHAN RD - PUDONG - SHANGHAI

© Photo by Hassen Brahiti





以诚信为基，以人为本，
以创新为动力，以：极致：为追求，
开创新时代！

中至和，
鼎至高

ZHEJIANG ZHONGDING TEXTILE CO.,LTD.

Add:NO.388 Zhongshan road Chongfu Industrial Park,Tongxiang,Zhejiang China Industrial Park,Tongxiang
Zhejiang China

Tel:+86-0573-88228888 / Fax:+86-0573-8822999

Http://www.zdtextile.cn / Email:service@zdtextile.cn



HUBO

YARN COLLECTIONS

pr^{ima}

BACK TO BASICS HUBO YARNS
FANCY SPINNING HUBO YARNS



NOVAA

PURE CORE COLLECTION HUBO YARNS
INNOVATION COLLECTION HUBO YARNS

MASTERY

ITALIAN TECHNOLOGY & LUXURY FIBRES
HUBO YARNS



BOOTH NUMBER: H02

JIANGSU GTIG HUBO CO., LTD

江苏国泰汉帛贸易有限公司
16-30F, TOWER B, GUOTAI FINANCIAL PLAZA, GANGCHENG ROAD, ZHANGJIAGANG, JIANGSU, CHINA
EMAIL: INFO@GTIGHL.COM.CN



聯合利泰
Excellent

江蘇聯合利泰紡織有限公司
JIANGSU EXCELLENT TEXTILE CO.LTD

電話/TEL:+86-512-58358027

傳真/FAX:+86-512-58358007

E-mail: tod@all-excellent.com

ericchan@all-excellent.com



Exploring

Soft Touch

&

Visual Excitment



GuangMING

Booth No

Y 05





SPINEXPO™
AUTUMN/WINTER 2020

WEAR & BREAKAGE

TAKING RISKS
AND SEEKING REFUGE
AN EVOLUTION FULL OF
CONTRADICTIONS
GOING BACK IN TIME
ON THE ONE HAND
AND THE DESIRE FOR CHANGE
ON THE OTHER



Street culture brings about rapid stylistic changes that are based on a desire and a search for fairer living conditions and that take account of the cost of products, ecology and respect for the environment and sustainability.

All revolutionary movements meet both with resistance and a rejection of the future, with a nostalgia that can take extreme forms and that makes us want to take shelter, to protect ourselves from our own environment and from that of others.

European history is full of lessons about society's evolution, from Charlemagne, who said in the 9th century "let everyone stay in his profession without ever changing it" to today's world where there has never been so much job fluidity: some 9% of workers have changed jobs at least once in their life. Behind this phenomenon, there is a clear sense of the adverse effects of the global crisis and the development of large emerging countries – almost one-third of those who retrain do so following redundancy – but also the desire of a large number of workers to have a job that they enjoy (Florian Besson) and that gives them a decent standard of living. It is a global movement that has, and will increasingly have an impact on the world of fashion, the need to belong to a group but be true to oneself at the same time.

All that goes hand in hand with a desire for a fairer life, starting by taking control of our daily lives, the desire to impose our will, to stop accepting and submitting to decisions from on high that go against our very essence as individuals. The discovery of a fundamental need for refuge and at the same time a wish to be different, «power to the people» but within the cocoon of a familiar structure, to impose our will without devaluing our achievements.

The parallel with textiles and fashion trends is clear : create something without rejecting what we have already achieved, take account of the needs and wishes of the consumer, develop tomorrow's products without turning our backs on yesterday's achievements, revolutionise without putting ourselves at risk, combine sustainable development and personal development, exist within a group, recreate a new appearance, embrace modernity and technological developments, with a simplified approach to the management of stock, but a much more ambitious approach to developing our own identity. Find the right yarn for the right product.

It is in this spirit that we look forward to welcoming our exhibitors and their buyers for the Autumn/Winter 2020-2021 season.



Diversity tears up the rulebook and intensifies our self-awareness. Masculine and feminine are no longer fixed concepts but a melting pot of elements that lead to gender fluidity. Fragmentation and product transparency are the order of the day for a democratic luxury that is accessible to everyone, a social face based on the “real me”, the link between autonomy/cohesion/evolution and the search for simplicity and comfort that are considered essential values.

PERSONAL PATTERNS

DEMOCRATIZING NOBLE FIBRES

18-1612 TCX
ROSE TAUPE



16-1219 TCX
TUSCANY



13-0822 TCX
SUN LIGHT



18-1306 TCX
IRON



16-0205 TCX
VINTAGE KHAKI



16-4404 TCX
ABYSS

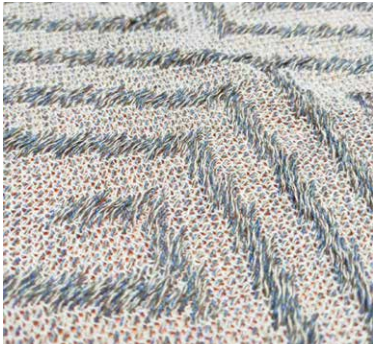


18-1421 TCX
COGNAC



15-1216 TCX
PALE KHAKI





Luxury and street fashion set the tone for cultural inclusion and pay little heed to the origin of products and brands. The new consumers have little time for “Made in”, which has been replaced by the desire to be part of a culture or a group and opens the door to customisation thanks to new products based on new technologies, software or distribution networks, at the right price. Fashion trends are being replaced by products and accessories.



The search for subtle contrasts and monochrome colours prevails and elegance is ever-present with luxury jerseys, double jerseys, fine and beaded knitwear, feathers and soft details as well as new constructions. Noble, eco-friendly materials, the combinations of re-used or recycled noble materials that favour a traditional style modernised with sober, simple lines where technique prevails, with shabby chic luxury, a quiet sophistication and a relaxed look.



Crystals are more popular than sparkle: neon colours are used to create a balance between contrived and natural, very different from the way they are used in activewear, applied to knitwear as well as to heavy pieces – beiges and soft colours and neons together. Refined luxury, combinations of woollen materials, faux luxury, controlled contrasts. The natural yarns are fibrous and have a texture, distressed finish and a natural coarseness.



New programmes introduced by knitting machine manufacturers enable mass customisation.



Performance and evolution stem from the link between production and consumption, innovation generates more authenticity, balance and stability, and community spirit, innovation and active and connected enterprise are synonymous with the integration, preparation and transformation of technological products.

The search for the comfort provided by elastic and stretch fabrics, for more intelligent, functional clothing, the collection of biometric data to create clothes designed to fit the human frame, all that enables evolution, opportunities, a potential for progression towards a development of materials and shapes.

MEMORIES & PERFORMANCES

SEEKING FUNCTIONALITIES

19-4022 TCX
PARISIAN NIGHT



13-5304 TCX
RAINY DAY



16-1346 TCX
GOLDEN OCHRE



17-4412 TCX
SMOKE BLUE



17-3933 TCX
SILVER BULLET



16-1539 TCX
CORAL

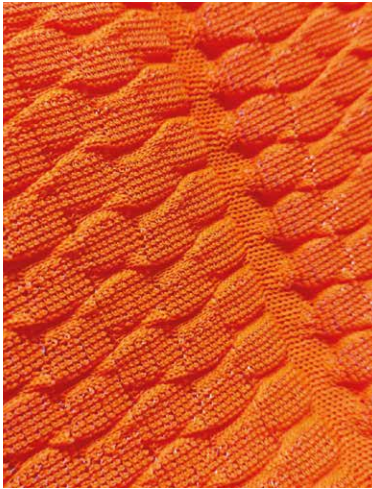


14-0446 TCX
TENDER SHOOTS



13-0650 TCX
SULPHUR SPRING





Re-use, reconstruction, zero waste targets, everything biodegradable, this is becoming the canvas for the juxtaposition of density, reflection and soft harmonies. We try to protect ourselves and isolate ourselves from the outside world, to take shelter. The search for new sensory experiences using technology, functional, resistant and anti-bacterial fibres enables the creation of essential clothes for all seasons and weathers.

Shoes, socks, active fashion and athleisure are evolving thanks to new synthetic materials that blend to create structural contrasts and optical finishing.

Metallic polyesters and nylons are important fibres, as are the 100% synthetic, technical fibres, which when used in fashion provide a contrast between matt and shiny, rough and smooth, which fits with a notion of comfort and functionality.

Their compact and airy features co-exist with waterproof coatings.



The yarns breathe, react to their environment, are smooth and subdued, and the knitwear is a combination of coarse yarns and fluorescent technical filaments. The patterns are chaotic and designed to protect from the cold, integrating technical research from sport, but with a stylish finish and surface finishes inspired by craftsmanship.



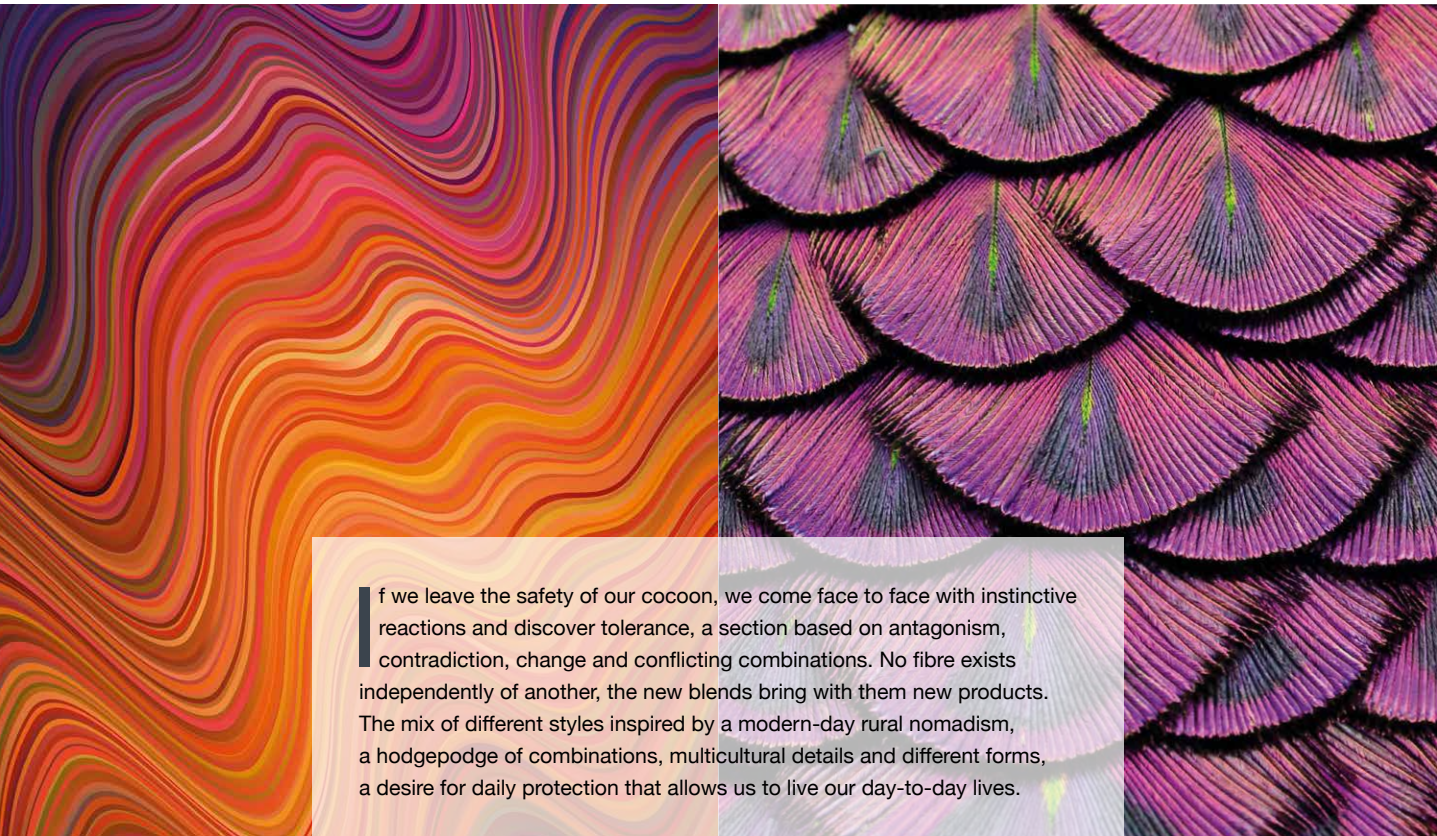
The new synthetic developments are changing the traditional finishes; fine, sparkling and fluorescent yarns co-exist with coarse, uneven yarns. Neon yarns blend with natural yarns; protective and technical finishes, random colour combinations and incorporations and layers for greater warmth.

16-0836 TCX
RICH GOLD



18-1537 TCX
COPPER COIN





If we leave the safety of our cocoon, we come face to face with instinctive reactions and discover tolerance, a section based on antagonism, contradiction, change and conflicting combinations. No fibre exists independently of another, the new blends bring with them new products. The mix of different styles inspired by a modern-day rural nomadism, a hodgepodge of combinations, multicultural details and different forms, a desire for daily protection that allows us to live our day-to-day lives.

DISRUPTION

RECYCLING COLOURS & STITCHES

15-1046 TCX
MINERAL YELLOW



19-5420 TCX
EVERGREEN



19-0201 TCX
ASPHALT



19-1245 TCX
ARABIAN SPICE



18-3714 TCX
MULLED GRAPE



18-0220 TCX
MAYFLY



18-2140 TCX
CABARET



17-3014 TCX
MULBERRY



Fine or coarse, assemble/separate/connect/include synthetic yarns to conserve natural resources, but also take a visual graphic approach that is unusual, different from a more formal style. New optical designs of fragmented and complex check patterns on knits and wovens, rhythmic contrasts and disorderly and energetic, decorative and extravagant transformations to create a contemporary and experimental mood in colour and fibre combinations that are unusual, retro-modern, inspired by rituals from elsewhere.

A hand-made, hand-painted look, intricate patterns and graphic designs. A mixture of fine and coarse yarns and the importance of accessories.

Contrasting rhythms, the softness of pure raw materials, where the plastic or resinous coating alone challenges the status quo. Hyper-textured surfaces, powdery finish, fake skins, sportswear-inspired finishes and graphics.

Hairy yarns, flannel given a modern twist with recycled plastic yarns, basic and luxury yarns mixed, classical mixed with kitsch, checked and geometric jacquard designs but based on modern techniques. Chaos, bright and jazzy colours, azimuth blends, funky knitwear.

Fuchsia pink is the colour for this range, eclectic and imaginative, perfect for both sportswear and street fashion.





Vintage & neutrality – reshaping and breaking the mould, accepting diversity, ethnicity and sustainable development. The traditional raw materials and new materials are reinventing themselves by integrating plastic. An “unfinished” look to fit the concept of recycling – contrasting materials with grainy, plant-like textures and blends of natural and high-tech fibres.

REFUGE

REVISITING MATERIALS AND PADDINGS

19-4826 TCX
DRAGONFLY



19-2430 TCX
PURPLE POTION



14-4807 TCX
SURF SPRAY



18-0521 TCX
BURNT OLIVE



16-3920 TCX
LAVENDER LUSTRE



19-3939 TCX
BLUE PRINT

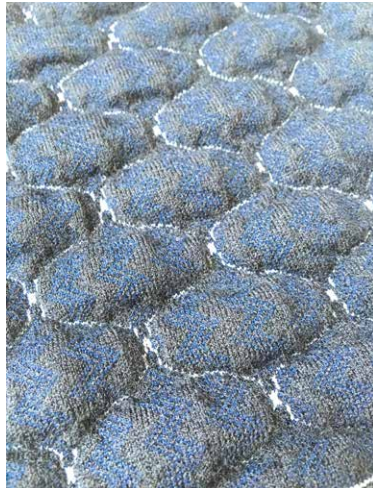


18-1222 TCX
COCOA BROWN



13-3804 TCX
GRAY LILAC





New manufacturing and creative techniques for unlimited fabric freedom. The search for the unexpected, for rebellion, wild, unique, diverse for an individual performance. A multi-disciplinary approach where creative art and science co-exist, where machines are replaced by "hand-made".

Paper yarns, linen yarns, heather yarns, natural fibres combined with synthetic fibres, all the combinations merge to create a range of surface finishes, a selection of resolutely trans-seasonal products.

Quality versus quantity, the potential of technical innovation leads to greater creativity. Polyesters and nylons become the foundation for new blends with the other fibres.

Protective and technical finishes, smooth finishes, bright, adhesive, waxed yarns, rubber coatings, a fusion of multicultural influences, a hodgepodge of contrasts, of casual and heterogeneous blends.

Urban protection, mixing sharp and opaque lines, lightweight and close-fitting padding. Small patterns and pointillist, abstract and monochrome motifs, mixing the abstract and the kitsch, combining mini-strips and geometric designs. A new type of patchwork combining the hand-made alongside the new developments. An impression of imperfection is created by the grainy, creased surface finishes for products that are simple, but still appear sophisticated.



Somewhere between modernism and classicism, daily life revisited with the help of simple, traditional yarns made to look slightly imperfect by combining them with coarse cottons in the search for 3D textures ; a return to twin sets, to men's knitwear, beaded rib stitching, canvas, twists, with new yarns combining natural materials, polymers and plastics, to create simple shapes, the camouflage finish, faded colours, colour variations and worn surfaces, with more than a nod to environmental responsibility.

EMERGENCE

REVISING MINIMALIST CABLES AND JACQUARDS

13-1010 TCX
GRAY SAND



17-3910 TCX
LAVENDER GRAY



17-3917TCX
STONE WASH



17-0324 TCX
EPSOM



18-5203 TCX
PEWTER



17-1226 TCX
TAWNY BROWN



17-4123 TCX
NIAGARA



18-1304 TCX
FALCON



And open-mesh fabrics with details that combine perfection and imperfection to satisfy a desire for natural comfort inspired by the plant and animal environment: a finish reminiscent of cocoons, shells and chrysalises, seeds and grains, stylised leaves. Animal fibres, felted fibres, false furs and feathers, velvet, fleece.



Hand-made designs for rustic knitwear in oversized or inflated forms (padded jackets), complex and disparate overlays. Inflating, exaggerated yarns, feather or ventilated yarns.



Indigo yarns, mixtures of diverse materials combined with linen or distressed eco-friendly cotton which refresh the traditional knitwear and wovens, combining natural textures and relatively traditional colour combinations and a "hand-made" touch for very coarse knitwear, which transform familiar shapes into fantastic, oversized garments in the search for comfort and safety. New curly technical yarns with dry surfaces, recycled cashmere, chenille and sparkling yarns.



Matt, slightly iridescent polyamide yarns, the whites and the neutral colours are ideal for the recycled garments and meet sustainable development requirements. Simple, matt surfaces with a lightly frosted appearance.



14-5002 TCX
SILVER





INTERPRETATION
OF SPINEXPO™
COLOUR TRENDS
BY OUR
DESIGNERS

AUTUMN
WINTER 2020

ODINA KEIM

Teacher at Winchester School of Arts and designer at SPINEXPO™ got her inspiration from fibres, to produce creatives knits.

Emergence

The idea that as one walks the path to self-discovery, our eyes become more and more open to the natural patterns of life. Old things pass away and new things emerge. By fixing our focus on the bigger picture, we become more fruitful and that in turn brings forth abundance on this earth.

As we discover new ways of producing yarns and fabrics we must return to the qualities this earth already has to offer. Inspired by the natural formations of the planet, natural materials and structures made from nature and natural products.

Refuge

The idea that there is a safe and protective place, a place where you feel completely at ease, a fortress of hope, a sanctuary of trust and a place completely saturated by peace.

“The space in between” is the concept of looking at the space between as a focus rather than the object or idea itself. In music, it is the space in between the notes, which gives the music its sound, in architecture, it is the spaces which creates the building.



Inspired by reusability and personality, keepsake packaging and tactile connection, minimalist and ergonomic shapes.

Wellness and mindfulness will be a focus and that space in between where two matters meet.

Memories and Performance

The idea that the place in our mind where memories are stored is a place where transformation happens. It's a circuit board of high functioning performance. It's a place where questions arise and renewability is free to take place.

A memory can take you somewhere, not necessarily physically, but certainly mentally, emotionally and spiritually.

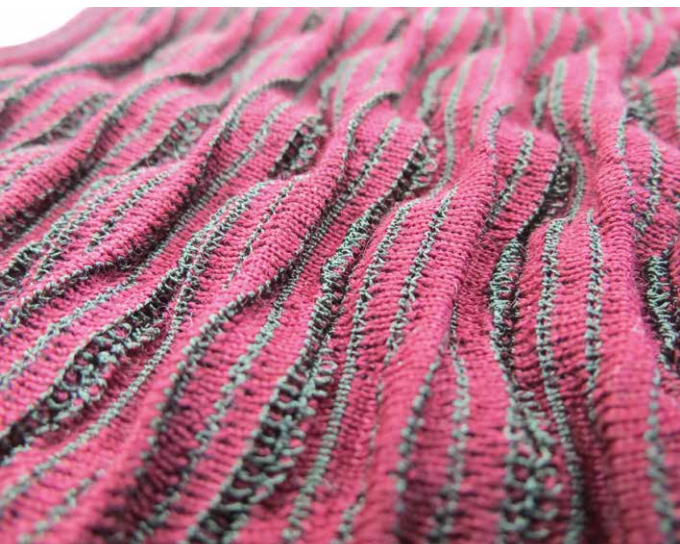
We can ask questions such as ‘what do we have other than our own individual memories, and what happens when we no longer have them?’

‘Do existing memories trigger new/other memories?’

And can we use them or do we just keep them?’

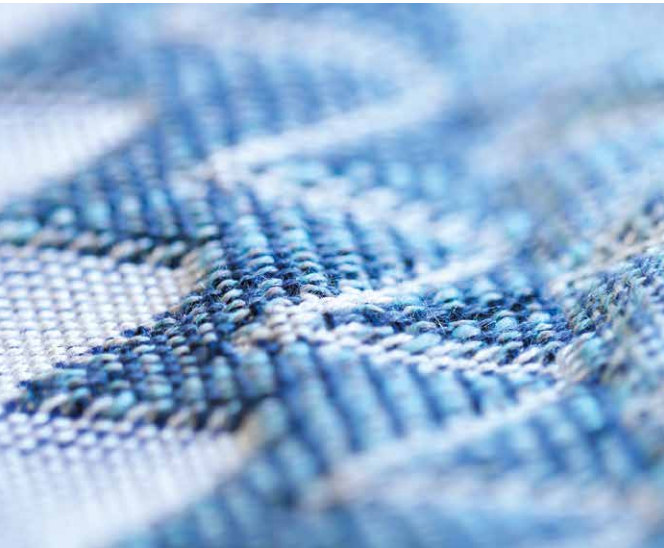
“I think, therefore I am.” (René Descartes) but is this what makes us WHO we are?

Inspired by the shapes made by footprints, shoes in their basic form, performance sportswear and medical transformation garments.



HELGA MATOS

Helga Matos specialises in weaving, but also excels in Research and Development. She explains her view of the seasonal trends.



Personal Patterns

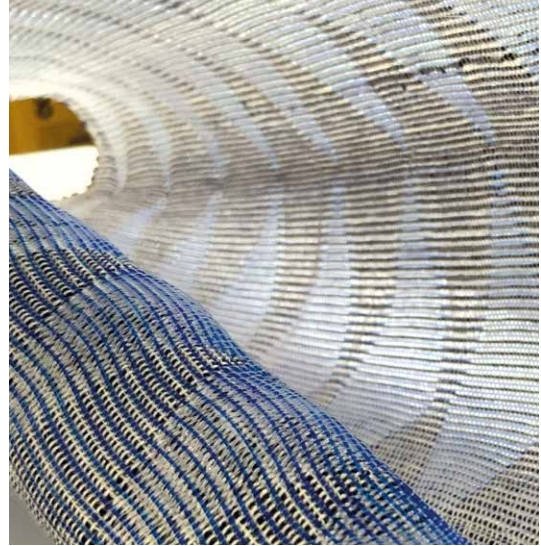
Personal Patterns inspired me to look at our intimate relationship with textiles and how much it can reveal about us and our ancestors. Going right back in time to draw inspiration from the archeological textiles and pottery findings in Hallstatt, Austria.

Texture and touch are the key focus to this collection. From fine to heavy weight fabrics, using simple weave structures and letting the yarn qualities speak for themselves. Cutting floats and using extra warp techniques to add texture to the surfaces.

Memories and Performance

Fast technological developments have been invading our lives with ideas of perfection and efficiency through connectivity. We are aspiring to be Super Humans while teaching machines to be better than us. Our parallel lives of physical and digital become blurred.

These ideas inspired me to create a collection of transformable fabrics that propose multi-functionality. Multiple layers of fabric are woven simultaneously creating pockets for the integration of technology.



Disruption

'Disruption' represents contradictions, manifestations and strong ideals that cause disruption and force chaos into our society. In this case these differences are seen positively, as a way of enriching humanity and teach us to see a situation from different perspectives.

The weave techniques used in this collection are based on the principle of lenticular printing. Woven pleats show a different pattern on each side and background, techniques such as blocks and pleats are used together. The focus here is on colour and visual effects using high quality wools that can be felted and brushed.

Refuge

This group focuses on the concepts of shelter and protection. Protection from physical and emotional stresses create a sense of peace and safety. Layers of shadows and architectural structures provide visual inspiration for this theme.

The combination of stretchable and shrinkable yarns with compact and strong materials will allow engineering 3D surfaces as an outer layer and soft yarns create an inner layer. Double sided fabrics with different finishes and simple geometric patterns complete a very tactile collection.



KATIE HANLAN

Katie Hanlan is a stylist based in Ireland, specialised in knitwear craftsmanship but also excellent with industrial knitting. This is her project:



Disruption

The aim of Disruption is not to use the process knit in a traditional manner, but to unravel and question it to develop new outcomes, to extend the boundaries of what can be done with mixing conventional techniques and yarns with unconventional finishes and treatments.

Brushed mohair and felted wools mixed with low melt nylon and polyester suggest new uses for these traditional fabrics. Jacquards are heat pressed and brushed, Fairisles are needle punched and patterns dissolved. Embroidery techniques and finishes add durability and strength to traditional Jacquards.

Refuge

The Refuge trend brings juxtaposing soft wools and cashmeres together with thermoplastic settings and 3 dimensional finishing to create textures which blend comfort and durability. Padding and blistered patterns are knitted with finishes that have been developed to be used as outerwear- warm and enveloping, but with protection from the elements, mixing softness with strength.



JO BEE

Jo Bee is a British designer who studied at Nottingham Trent University. Here are her proposals:



Emergence

I wanted to take the idea of a cocoon through within the shape for my garments in this piece.

Pleats and zips create shapes that can expand and grow much like a cocoon would, and give the user different looks to their garments. Pleats create air pockets that will help to make a warm environment for the wearer.

In contrast to a cocoon that envelops, grows and changes on the body, visually, inspiration has come from textures and patterns of the frozen nature from which new life grows and emerges out of. Contrast in textures through yarns are key here – matte with shine, stretch with distorted non stretch, solid with sheer as well as the process of pleating being brought into the mix.

Memories and Performance

Technological developments today mean that we are more connected than ever before. CPU boards and chips are integral to the computers and machines that keep our society running even in the remotest of areas. These circuit boards have been the inspiration behind this group which for me is all about the Ath-Luxe movement which is so going from strength to strength at the moment as clothing is transitional between seasons, fashionable, as well as being practical. Techno, rubber and stretch yarns all work harmoniously together with the visual start point to contribute to the Tech-Glam look of Memories and Performance.

LAURA MCPHERSON

Laura McPherson is a teacher at the prestigious London Royal College of Arts, and a specialist of knits and structures reinvented and reworked that are favoured by visitors and experts. Here is her interpretation

Personal Patterns

Personal Patterns is driven by texture; raw and uncomplicated in its design, the focus is on the natural aspect. Fibrous, hair like yarns are worked into, with sensitivity and depth, resulting in multi-faceted fabrics that are modern in application but pure to the touch. Hand and machine knit elements are fully intertwined, through felting, needle punching and woven aspects. Heavy weight fabrics are layered in areas, providing warmth and the subtle colour palette adds to this feeling of natural one-off construction.

Refuge

Padded and quilted elements are the focus for Refuge, alluding to the idea of fabrics for survival and protection, shape and form are dominant throughout. Colours are bold, with immense depth and intrigue. The integration of plastic is seen as both a form of inspiration and a fundamental material for application, alongside additional printing and laser cut processes. Refuge aims to explore the juxtaposition of contrasting yarn qualities through both texture and form.



Memories and Performance

Driven by technical innovation and yarn manipulation, Memories and Performance explores stitch, function and form with the aim to challenge and inspire. Test like pieces consider a high-tech approach, investigating heat setting, thermochromic yarns and encapsulation. Form fitting shape is created through the integral use of stretch, and plastic coating is added to provide water resistance. The collection forms a multiple application approach through the dynamic use and integration of yarn properties and intriguing colour.

Emergence

Emergence explores the organic textures and forms of frozen surfaces in nature, with a concentration in stitch and contrasting components. Heavy weight devoré and puff binder are used to heighten differentiating textures and create subtle form. Crystallised qualities are created through the integration of metallics and beading, exploring dense elements with moments of transparency. Cocoon like shapes are at the forefront of these designs, bringing a contemporary approach to the subject of morphing pattern and form.

Disruption

Disruption is the fusion of techniques, explored through intarsia, fairisle and inlay to create disjointed and fragmented pattern. Colours are clashing, unexpected and layered, working both on and off the machine, with the addition of stitch, needle punch and felting. Lines are disrupted with altered directions, developed to create impact and a sense of movement. There is focus on blurring the lines between techniques and processes, creating a mixed media, multi-disciplinary approach.

STEVEN OO



The way I have interpreted this season as a whole is basically a summation of how modern life has evolved in the technological age. In my point of view, this season's five trends aren't about "trends". They are about different types of people and what their needs are in the fast changing modern world.

We at SPINEXPO™ get many different types of visitors and this season, I plan to use each "trend" to target specific groups of clients with producible, marketable, yet innovative products.

In a move that shifts from couture fashion to modern fashion, I would like to display more information on the garments and swatches that I will be producing. Not just the yarn and spinner info but also gauge, garment weight and knitting time. This transparency will allow customers to know what we are displaying in the trend area are not just aesthetically pleasing but can actually be manufactured.



Personal Patterns

My collection of 3 looks for this capsule is the antithesis of all of the above and really focuses on what one can create with their own hands to make real personal patterns.

Styles will be very simple in terms of silhouettes because this group is mainly to feature luxurious fibres with super soft hands that are also focused on environmental friendliness.

I plan to use mostly undyed natural fibres or plant dyed fibres as an homage to all things nature. This group will have minimal use of manmade fibres in order to focus on the hand-made aspect. The patterns are inspired from the geodes of the earth and its naturally unique lines. Every garment is made on the machine but all have a feeling of being hand-made. The stitches can be a bit loose and messy with hand finishings as part of the focus. Hand brushing mohair, hand stitching on the seams for personal touches, hand shredding on the machine knit stitches to add another layer of design; all add to the concept of using ones hands to add personal touches in the creation of a garment.

Spinners: Best Shan, FashionYarn, Huajiana, UPW, Xinfang

Knitter: Meridian Knitwear Inc

Memories and Performance

This collection is targeting the customers who are truly informed and want garments that can last and are easy to maintain with an elevated sense of style. The inspiration for this group comes from the motherboard of a computer in its intricacy and delicacy but no one can argue the performance of this machine has changed human life forever.

This capsule of three looks focus on the wearability and the easy care component of synthetic yarns. Utilizing yarns that can all be machine washed, we have created textures that are modern. Although the silhouettes are performance driven, the sheerness of the fabrics maintain a sense of femininity.

Spinners: Best Shan, Esquel, FashionYarn, Sawada

Knitter: Meridian Knitwear Inc.

Disruption

The aesthetic for this capsule takes inspiration from young men still living at home on a budget and taking old garments out of their parents' closets and putting their own touches. The garments look as though they have been through wear and tear but all the techniques utilized are actually knitting out the deconstruction instead of simply destroying a fabric. The textile patterns in this capsule take inspiration from menswear jacquards and tweed fabrics with an added component of disruption in the way they are knitted out.

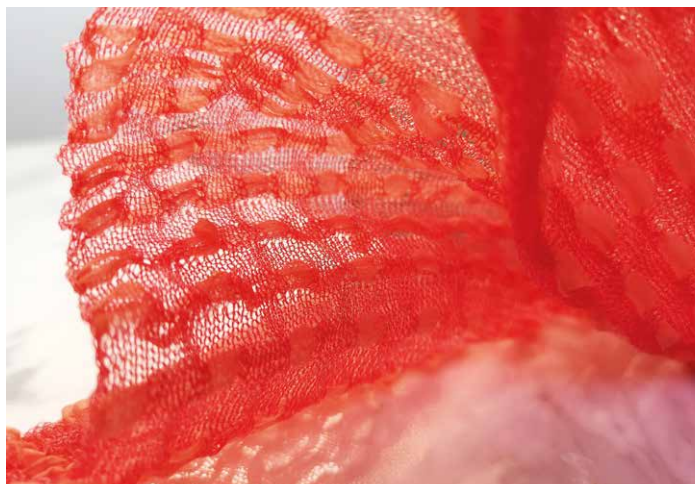
Spinners: AA Global, Esquel, Excellent Textile, FashionYarn, M'Oro, UPW

Knitter: Meridian Knitwear Inc.

Refuge

These people wear clothing that are secure and gives them a feeling of safety. Garments are protective, durable and utilizes repurposed materials.

The colours are solemn and cold but you can sense a calm and stable sensibility from it. It is as if the wearer is standing on a windy cliff edge staring into the ocean but feeling completely at home and safe. The garment offering in this group will have a heavy outdoors mountaineering aspect with a modern edge through innovative padded stitching in various



small scale repeat patterns. The garments will be solid colour but the dimension will come through the 3D padded stitches done by inlaying puffy nylon yarns within the knit structure.

The patterns draw inspiration from everyday items that we see and use in our daily lives but all have added dimensionality to them through stitching techniques. Abstract geometric patterns are achieved through subtle stitch differences as well as the latest IP inverse plaiting technique that looks like a print or jacquard but done on Jersey surface.

Spinners: Sawada, Ylei, Xinfang, Toray

Knitter: Meridian Knitwear Inc.

Emergence

This group is about achieving enlightenment through the process of living and making mistakes. Just like a silk cocoon would metamorphose into a butterfly form that looks completely different from its original form, as people grow up, they live, they learn, and they change. Some for the worse, but in my opinion most people change for the better. I plan to draw inspiration from the life of an insect to develop a four part swatch exploration that will be translated into a 3 looks capsule. The four parts of metamorphosis include Egg, Larvae, Pupa, and Adult. The Egg stage can be translated into round textures laced with micro textures in beautiful patterns. The Larvae stage allows for the use of different colours in unconventional cable like textures. The pupa stage will start to feature matt monofilament yarns that create 3 dimensionality through holding stitches and finally the adult stage of a butterfly will allow for a great exploration of shimmery colours with a matte base in lace/snowflake like patterns. This immersive swatch display will provide visitors with a process of transformation to take them to the final emergence.

Spinners: Best Shan, FashionYarn, Haoye, Sawada, Topline, Yarns & Colors, Xinfang.

Knitter: Meridian Knitwear Inc.



RORY LONGDON

Rory Longdon works with Marco Folloni near Carpi, Italy. They manage MRC, a knitwear studio and manufacturing factory and have their own label.



Personal Patterns

Back to the Roots - Perfectly Imperfect: a story that takes us back to the beginning. Back to our pure-selves where chemical dyes and man-made fibres were a thing of the future, where animals provided the fibres, plants the colours, and our hands the fabrics; where gender didn't matter. Fabrications are organic, hand loomed, imperfect yet perfect. Subtle textures, hand woven looks and natural imperfections. Unfinished - boiled, raw cut and outside seams.

Yarns are all natural, organic and recycled in fine to mid gauges. We focus on a story of yarns that are as natural as we can find: cashmeres, wools, alpaca and yak, all in their purest forms. Natural slubs, imperfections, vegetable dyes, coarse hair all used to create fabrics that are naturally unique.

Memories and Performance

Opening up the panels of high-performance computers - we reveal a technical network of high-tech electronics. Insulated wires twist next to complex motherboard layouts of chips and grills, while high shine components are graphically labelled in bold fonts.

Fabrications are high-tech and graphic. Plated ribs in contrasting colours are worked alongside micro stretch stitches and high density meshes. Insulated wires inspire special performance yarns - coatings, waterproof, insulation and performance properties.





While high polished surfaces inspire new fabric finishes such as waterproof surface prints, bonded seams and glossy thermoplastic prints, high tech sport shoes inspire garment constructions and lines.

Yarns are all fine weight in performance blends, high stretch, clean fine merino, with coated and rubberized properties.

Disruption

Breaking tradition - a fixation on fabric taking traditional fabrics and distorting, blurring and manipulating them to create updated versions. Traditional plaids, fair isles and animal prints - distorted, broken, disrupted and blurred, overlapped, blended and seamed - creating clashes and blurs. Fabrications are made to be reworked, retouched and revamped, using additional techniques like printing, needle punching, brushing and embroidery; we blur and distort these classic patterns creating modern compositions, unorthodox mixing of patterns that bleed with one another, fading seamlessly from heavy to fine weights.

Yarns are selected to compliment the techniques used. Fine weight merino wools and extra fine kid mohair contrast with clean stretch viscose; hairy yarns for brushing and airy fibres for needle punching; we work across weights from fine to heavy.



Refuge

Packaging and food boxes, synthetic foam and bubble wrap, sleeping bags and mattresses; domestic items we use every day - seen up close, cut open and zoomed.

Elements of protection, cocooning and comfort. Geometric patterns, collages, mixing matte and shine.

Fabrications are inspired by these spongy products - mid weight cashmere is dimpled to look like industrial foam, while fine weight stretch wools mix with modern technical fibres and nylons to create light weight padding.

Additional techniques are used to add new dimensions to fabrications: sponge - bonded padding and foam quilting; perforation - laser cut perforations on fine weight felts; relief - plastic thermal-settings.

Yarns are fine to mid weight - fine stretch wools mix with high tech stretches and ultra-light weight sheens.



Emergence

Inspired by the juxtaposition of when nature freezes. Organic patterns become glossed and pixelated - Ice motifs disrupt matte surfaces, crystallized surfaces mimic plants natural markings, and colours bleed and merge under the icy surfaces.

We see and work with contrasting aspects: stretch and felt; transparent and matte; dense and light fabrications are full of texture and contrasting aspects - created through the combination of juxtaposing yarn weights and fibres.

Jacquards distort using noble and man-made fibres - secondary treatments like boiling and felting create unique organic 3D textures as the fabrics crumple and shrink.

Yarns are mid, fine to superfine weights. Felted wools, mini-bouclés and cashmere give luxury softness, synthetic stretches and plastics create modern aspects, while ultra-fine metallics and micro- glitters give rich subtle shines.

HOME AS A CENTRE OF LIFESTYLE

To complete the 5 trends directions of the season, SPINEXPO™ presents a specific trend zone where home is a frame out of the speed of changes we face on a daily basis and the place where we can relax, rest and take care of ourselves, not obligatorily in a cocoon way, more as a new way of life.

Some surveys showed that the millennial generation spends around 70% of their time at home, dialoguing on social media, working or studying from home. Jobs are selected to be closer to home, when possible. Home is becoming some kind of sanctuary where one can revitalize.

The rise of athleisure came together with the growing desire to have a home that one likes; today, the two directions seem to merge to bring a new wave of home fashion and accessories with relaxed shapes in top qualities knits fashionable enough to be worn inside and outside, welcome outsiders popping up unexpectedly. Relaxation and indulgence is the key here with complete outfits going from pyjamas that can be worn inside and outside, socks than fit the collection, slippers, for health conscious customers. Easy care, moisture management, heat regulation, feel good and comfort together, but in good quality fibres.

***Adapt knitwear to be hybrid
between life at home and outside.***





Our two main designers propose their own proposal.

The project of Steven Oo for Meridian Knitwear is titled “Personal Oasis”.

Nowhere feels better than the comforts of one's own home. In this proposal, we aim to present the ultimate comfort zone by presenting garments that can be quite literally lived in. They can be worn inside out. They do not require styling. They can be shared between different sexes. They are extremely comfortable. In addition to the presentation of style, we are also showcasing home items that are knitted to inspire what could be achieved using needles and yarns. All the yarns utilized in this capsule have been carefully selected to showcase the best of the best. Not only are the yarns comfortable but some also offer functionality. Feel free to take a seat or just simply lay down and relax in our presentation to really take in what it means to be “Home”.

Spinners: Best Shan; Esquel; Topline; UPW; Zhongxin; Zhongding; IF; Toray;

Design: Steven Oo

Manufacture: Meridian Knitwear Inc.

Rory Longdon presents “Slow Up” !

In such a fast paced world - were always on the go. Travel is much easier, as is staying connected and keeping in touch.

We are in motion continually and want to stay comfortable yet chic when doing so. At the same time our personal time at home is becoming more precious.

This capsule is designed for transition from our own time at home to our own time in life. Looks that carry us from the home to the flight, the gym or the shops



STUDIO EVA X CAROLA

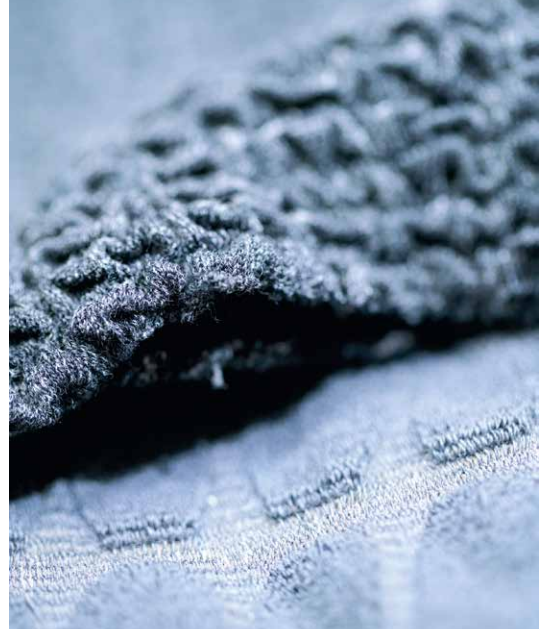
Eva x Carola is a studio based in Netherland and Shanghai specialised in activewear and technological research in the active sport sector

Considerate select, break and construct

In today's uncertain times, it is not easy to find oneself. With political instability, the planet on the verge of destruction, and all the falseness of social media, consumers are searching for a way to truly nurture their inner selves in a way that is genuine and authentic.

Personalisation is an intelligent answer to this very modern dilemma. We want to be empowered to make our own choices in life, starting with the clothing we wear and the textiles that we surround our bodies with.

Taking the idea, we have come up with three different concepts within this project that correlates with SPINEXPO's themes for this season:



Personal Patterns

Our goal is to create textiles and garments that are customised to the needs and desires of the consumer.

To facilitate this, we can create a personalised template and interface where consumers can select from a variety of options to create the garment of their choice. These options could include variables like texture, yarn, comfort, softness, and aesthetic details.





Memories and Performance

To produce new sensory experiences, we can use a data-driven approach to create materials and shapes that deliver new levels of comfort. Comfort can be interpreted as a variety of qualities, from thermal properties to waterproofing and softness. A holistic approach is crucial here; each element is carefully selected to perform specific functions in the garment.

Refuge

This stage is about reshaping textiles and creating new manufacturing and creative techniques. Leftover materials from the garment creation process can be upcycled, taking sustainability to a new level. One idea would be to create biodegradable footwear using 3D knit technology. We have an opportunity to collaborate with innovative shoemakers in order to achieve this project.

These three approaches mean we can look to a future where clothing takes on a new dimension and becomes a more meaningful part of our lives, reflecting not only the needs of the planet, but also the need for a deeper and more authentic connection to ourselves and our bodies.





MERIDIAN KNITWEAR INC



Booth Number: E 10
MERIDIAN KNITWEAR Inc.
Rm205 955 S Suzhou Rd
Huangpu Dist.Shanghai
info@mkiknit.com
+86 21 6333 0959

The logo for GTHS, featuring the letters 'GTHS' in a bold, red, sans-serif font. A stylized, grey, curved graphic element resembling a wave or a ribbon is positioned between the 'T' and 'H'.

20/21FALL WINTER COLLECTION

江苏国泰华盛实业有限公司
JIANGSU GTHS INDUSTRIAL CO.,LTD

BOOTH NUMBER: G01

Add: 7-22/F Guotai New Century Plaza, No. 125 Middle Remin Road,
Zhangjiagang, Jiangsu, China

Tel: + 86 512 5891 2582

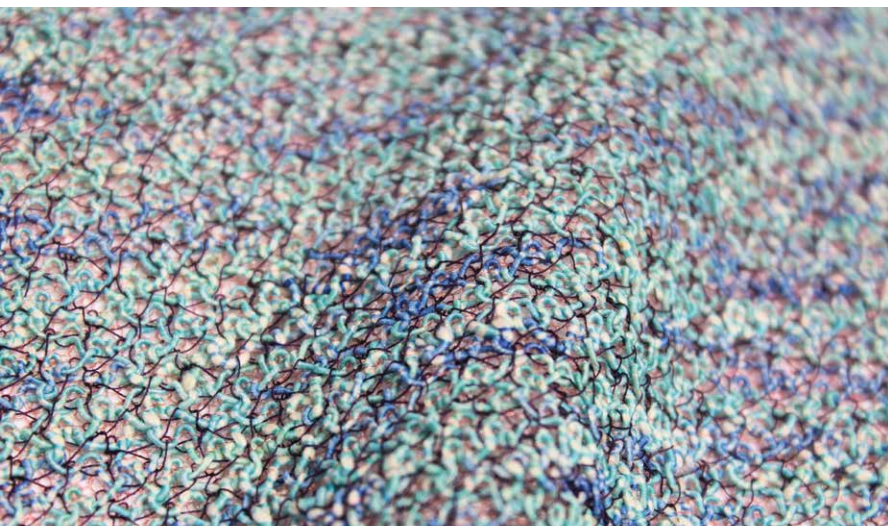
Email: alanyu@gths.cn

Fax: + 86 512 5891 3787

www.gths.cn



SPINNERS
& KNITWEARS
STRATEGY, INNOVATION
RESPECT FOR
THE ENVIRONNEMENT



AA Global
*is a pioneer in fancy yarn,
an area that it is passionate
about developing.*

It is a “green” spinning company, with a sophisticated energy-saving system and rainwater recycling system.

More than 60% of the land on its sites consists of meadow, gardens and orchards. Each season the company gives its employees organic fruit and vegetables. The water for 80% of the green zone comes from the rainwater recycling system.

Most of its raw materials are natural and include organic cottons and RWS wool. However, conscious also of the need to recycle plastic, AA Global now recycles chemical fibres and has developed a “Recyclable” series, for which it uses recycled nylon and polyester. It offers a stock service for more than 20 yarn qualities with an immediate stock of colours available. If the product is not in stock, it can produce minimum quantities of between 250 kg and 500 kg per colour for a 1500 kg order.



The company works with universities, in particular Nottingham University in the United Kingdom.



Best Shan
*has specialised in the production
and development of fancy yarns
for several decades and has
always been an advocate for
the environment. The spinner
is always on the lookout for
eco-friendly products, which
it uses in combination with
its own manufacturing techniques.
Best Shan has invested in
a large-scale solar generator
system which ensures the
company’s power supply.*

Best Shan has its own factory which produces industrial yarns spun primarily from natural fibres. Its raw materials include kid mohair from South Africa, baby alpaca from South America, wool from Australia or New Zealand, silk, extra-long staple cotton fibres and hemp from China. It also uses Wasii paper yarns from Japan.

It presents two collections a year. Best Shan has offices in Germany, Italy, Korea and Hong Kong.

Xinao Textile

Founded in 1991, Xinao Textile has specialized in the production of worsted spun machine knitting yarns made from 100% Merino wool or in blends.

Xinao Textile has grown significantly, and today is one of the world largest and leading spinners of Merino wool and Merino wool blend machine knitting yarns.

Xinao Textile group have state of the art production facilities located close to Shanghai in China, and it is the only wool processing company in the knitwear sector, who carry out each stage of manufacturing along the supply chain “from farm to yarn” themselves. This ensures them to exert better control over both quality and traceability.

In addition to producing machine knitting yarns for circular knitting, sock manufacturing and more recently for the knitting of uppers for footwear. XINAO produces a vast array of machine knitting worsted spun yarns for flatbed knit-



ting. These yarns are available in a wide range of counts (Nm), to cover the full range of flatbed knitting machine gauges (gg) from 3 gg through to 18 gg.

Xinao Textiles has been a Woolmark licensee since 1994 both for their Woolmark (100% Wool) and Wool Rich Blend machine knitting yarns. This ensures that the yarns on offer meet the stringent Woolmark specifications which cover aspects like fibre composition, colour fastness in the case of dyed yarns and dimensional stability of yarns depending upon care claim level, i.e. Machine Washable or Hand Wash with Care etc.

Xinao Textiles and its products have passed numerous domestic and international quality assurance standards, which include ISO9001 quality management system, and ISO14001 Chinese environmental certification. They are also a Blue sign partner, and their yarns are also qualified both for the Oeko-Tex Standard 100, and the EU Eco-label.

In 2017, Xinao Textiles became an accredited and certified manufacturer by the Textile Exchange in relation to RWS (Responsible Wool Standard). They are certi-

fied by the Textile Exchange to produce yarns made from organically grown wool, and also some of their yarns, a blend of Merino wool and recycled polyester carry the Textile Exchange Global Recycle Standard (GRS) mark. Zhejiang Xinao Textiles Inc also acquired knowledge and experience in meeting the requirements of the Greenpeace program “Detoxification of the Textile Pipeline.”

Xinao have developed the manufacture techniques of their products to help protect the environment.

For example, the product of ECO and ERA yarns before spinning has been specially treated with a new shrink-proofing (Machine Washable) process, the wool of ECO and ERA were treated by CF-1 and CF-2 separately; this process of treatment does not involve the use of Chlorine or other halogens in the process.

As a result, no Absorbable Organic Halogen (AOX) compounds are formed or disposed of in the effluent from the process, thus offering a more environmentally solution.



UPW

provide customers with the highest quality yarns at very affordable prices, higher standards of product qualities, service and value; UPW aim to uphold and educate in standards of environmental responsibility and sustainability and undertake all major policies and decisions with furtherance of these goals in mind.



UPW yarns collections comprise of woollen spun, semi-worsted and fancy twisted yarns, all dyed and spun at their own facilities in Dongguan, China. UPW produce design-led luxury yarn collections focusing on fantastic colour, always held in stock for fast sampling.

Their R & D team creates a specific collection twice a year, but also customizes yarns according to clients' requests. With 200 qualities in stock service, UPW are the leader of stock service yarns.

When the yarn is not in stock, the stock store is based on 1 kg minimum. If ordering from the website, it leads to automatic direct shipment.

As a huge stock service company, UPW hope to offer a better alternative to the fashion market, take environmental protection very seriously and pride to be able to recycle 60% of the water used in their top dyeing process. After a unique filtering process the toxic waste is converted into pure H₂O and reintroduced to the environment.

UPW use Cashmere and Yak that bare a strong sustainable message. They have perfected the supply chain for full trackable traceability down to regions. A special assigned team that works with the farms to implement strict health care and good welfare for animals that are fed a good balance of fresh grass and feeds to preserve the landscapes.

The use of Yak fibres promotes social responsibility by giving back to the communities with whom we work; the program provides education in better farming, helping to tackle environmental issues.

This season, UPW raised the issue on the use of fur in fashion, even conventional faux fur, unsustainable due to its raw material background, and we tried to offer a better alternative by using more eco fibres while keeping a realistic fur look/touch.

E. Miroglio

is a fully vertical textile company that mainly produce yarns and fabrics as well as prints and knitwear.

Passion for product driven, E. Miroglio is also recently involved in apparel wholesale operations. Main product is Merino and Merino blend yarns in classic and novelty as well as fancy look, with special care to new sustainability issues and fashion. Also stretch viscose for comfort and service, and filament viscose for service and handfeel. E. Miroglio has 30 yarns in stock service, and can offer 2kg in a week from lab dipping.

E. Miroglio is a fully certified production plant, sustainable and eco-friendly, from Detox to GRS, RWS OCS standards as well as OekoTex and REACH.





Südwolle Group

is a global producer of worsted yarn for weaving, circular and flat knitting in pure wool and wool blends. The company's brands Südwolle, Biella Yarn, Yarn in Motion, Richter, HF, Stohr and Soey are focused on different segments of the global textile market. Located in Nuremberg Metropolitan area of Germany, Südwolle Group employs more than 3000 people globally with production facilities in Germany, Italy, Poland, Romania, Bulgaria and China.

Biella Yarn focuses on yarns in pure Merino or Merino blends for flat knitting. Our collection comprises high-end yarns made from Superfine Merino Wool (15.5-17.5 micron) and Extrafine Merino Wool (19.5 micron). The range will offer blends with natural fibers like Cashmere, Silk, Cotton as well as a capsule collection of organic yarns.

HF offers fancy yarns for flat knitting machines: from classic articles and blends with wool, silk, alpaca or polyamide, to new ecological GOTS yarns, made of blends with cashmere or crabylon, an eco-friendly fibre based on crab shells.

Yarn in Motion delivers circular knitting and seamless yarns for every-day wear, sportswear and work wear both in the fashion and in outdoor industry. Heavily involved in the re-emergence of Merino as a performance fibre in the outdoor market, Yarn in Motion offers worsted yarn spun from 100% finest Merino wool and a wide range of wool blends with performance and luxury fibres including nylon, functional polyester, Lenzing™ Lyocell, Cordura®, recycled fibres, silk and cashmere.

Richter supplies a range of elite hosiery yarns for many purposes – from business to fashion, sports and outdoor activities by combining the traditional benefits of wool with state of the art spinning and dyeing technology. We supply 100% wool and wool blends with nylon, functional polyester, Lenzing™ Lyocell, recycled and biodegradable fibres, silk, linen, hemp, Lurex and other fibres are stock supported in a wide range of modern colours. Richter works closely with customers to develop customized yarns and colours from a wide base of fibre and spinning technology possibilities.

Südwolle provides traditional weaving yarns spun from pure wool and wool mixtures in raw-white and top dyed, with a choice of Lycra®/Elastan and fancy yarns. Südwolle has the widest range of worsted weaving yarns available in the market and with a global production and distribution network, can help customers reduce their lead times by delivering what they need to where they are. The Südwolle “Fit for Purpose” concept, a wide a range of standard products together with the expertise and flexibility to develop customized items, means customers can easily turn their creative vision for woven fabrics into reality.

We offer stock support for various yarns for flat knitting, circular and seamless knitting as well as for hosiery available globally (Germany, Italy, China and US).

Among others for 100% Merino wool Extrafine 19.5 micron and 100% Merino wool Superfine 17.5 micron as well as for various merino blends in raw white and dyed.

We also develop alternative technologies in yarn treatment like non-chlorine or Naturetexx® Plasma. Naturetexx® Plasma is a non-chlorine treatment powered by renewable energy. It is the ecological alternative to chlorine-based chemical treatments for wool. (www.naturetexxplasma.com). Südwolle Group is a certified bluesign® supplier.

We are also your partner for GOTS and IVN Best certified yarns for organic items. On request we can also supply traceable wool fibres as well as RWS certified yarns.

As part of Südwolle Group, all our collections have access to advanced ISO 9001:2008 / ISO 14001:2004 certified manufacturing, rigorous quality, ethical production and a global production and distribution network. This ensures reliable ongoing service and peace of mind to their customers.





Lugang Culture

One of the major woollen company, with three brands under the group: Lugang, Serenata, and Armonia. The main products are woollen yarns, semi-worsted, worsted yarns, brushed yarns and fancy yarns.

They have their in-house R&D sector, working on a two-season base to launch their own collections. They have 4 main qualities that have long-term bulk stock and could cater for any fast delivery requests. They have agents in Europe and Korea, and also have a Bangladesh office. Apart from a manufacturing yarns, they also deeply get involved with industrial partners.

Zhongding Textile

Zhongding main products are pure cashmere, pure merino wool, wool/cashmere blends, Wool/cotton/Silk. Natural fibre blend yarns in woolen and semi-worsted.

Best sellers are:

- Trinity - 100% superfine merino wool 26/Nm/2
- Charm - 90% extrafine merino wool/10%cashmere, 26Nm/2
- Elegance - 100% cashmere, 26Nm/2
- Modern - 50% mercerized merino wool 50% Cotton, 30Nm/2.48Nm/2
- Cashtouch - 100% extrafine mercerized merino wool, 48Nm/2-

- Freedom - 47% extrafine merino wool 38% viscose 10% nylon 5% cashmere, 28Nm/2
- Verna- 60% long staple cotton 20% viscose 15% nylon 5% cashmere, 48Nm/2 –

The most affordable Spring/Summer cashmere blend yarn with a long stapled cotton majority.

Zhongding invested 400 millions RmB in the expansion and equipment renewal of a new dye house in 2018, and are committed to making contributions to the protection of the water environment.

GTIG HUBO

is a member of the GTIG Group (N°1 China Textile Export Enterprise). As the worldwide leading yarn supplier today, HUBO has been ranked N°1 amongst "The China Sweater Yarn Export Enterprises" for years.

They have an extensive range of yarn products includes Worsted Yarn, Semi-Worsted Yarn, Fancy Yarn, Cotton Yarn and Woollen Yarn, counting on their own in-house R&D department. They have around 5000 items in stock service. For items which do not have stock, the sample yarn Minimum quan-



tity is 20 lbs/color, lead time 15 days; bulk yarn MOQ is 500 lbs/color, 3000 lbs/order, lead time 45days, which may vary upon yarn type and order qty. Hubo has agents overseas, in USA, UK, Spain and Bangladesh. Hubo have received sustainable certificates, such as BCI cotton, GRS, OCS, OEKO-TEX, Higg and Clean by design etc. as well as raising the use ratio of eco fibers year by year.



Dongqi

is a niche company with its own spinning works and knitwear produced from its own collections.

It has its own dyeing unit and offers a stock service for its entire range of yarns and knitted models, and in all colours. It has no minimum purchase quantity for its yarns or knitwear.

Dongqi is a pioneer in stock service, with many years of experience and a reputation for reliability. Every year Dongqi sees a 30% increase in its sales.

Delivery times are a maximum of 20 to 30 days for custom production.

Knitwear quantities are very flexible, and the company frequently produces only 50% of the order, preparing the yarns for the remaining 50% so that quantities can be adjusted if there are any issues, thus giving its customers a great deal of freedom and security. Dongqi is a family business which has embraced the new generation that has learned its trade at US or European universities.



Fashionyarn

is a Chinese spinner specialising in no-pill core spun yarns, plied yarns (especially for Spring/ Summer seasons) and fluffy fancy yarns.

Its R&D department works on annual collections, combining the concepts of its customers and its own trend research. Many yarns are available in stock service and for those that aren't, ready-to-dye stocks ensure fast delivery to its customers.

It has its own dyeing unit and increasingly recycles the natural materials used in the development of its yarns.

Its customers include Zara, JNBY, Peace Bird, Esprit, Bonita, Promod, Sandro and River Island.

Gain Hill

is a pioneer in development and technological innovation in yarns. It is the fastest to react to market trends, producing yarns with a unique look at reasonable prices and with fast delivery times for both yarns that use natural and synthetic materials and sustainable yarns.



Gain Hill presents one collection per season and continues to develop new products in between seasons by engaging with its customers who are on the lookout for new products to keep them ahead of the game when it comes to creativity.

Gain Hill has a range of brushed, looped, ribbon, Lily and core spun yarns, and offers a stock service for more than 20 yarn qualities.

Its customers include Marks & Spencer, Top Shop, Dorothy Perkins, Country Road, Catherines, J. Crew and Target.

Sawada

is a Japanese trading company and spinner with offices in Hong Kong, Shanghai and New York. It produces and sells yarns for flat knitting and works closely with the synthetic fibre manufacturer Teijin.



Its yarns include Dande, a kid mohair yarn, Es High Stretch Lily, an ultra-light polyester yarn, Fit Tech, a special polyester yarn that uses Solutex® (an eco-fibre produced by Teijin), Camifine, a Japanese paper yarn, Carma, a thick worsted wool yarn and many more. The spinner adds 3 to 4 new yarns to its range each year, and has a stock service for more than 40 yarns.

Its customers include Alexander Wang, Marc Jacobs, Rag & Bone, Vince, Coach, Tibi NY, Calvin Klein and MM Laffleur.

Shi Kwan

specialises in metallic yarns, fancy yarns and recycled yarns. It regularly revises its collections based on feedback received from its customers.

It has a stock service for all its metallic yarns and a range of colours with minimum sample quantities of 5 kg. The minimum production quantity is 300 kg per batch, with delivery times of 10 to 12 days for samples and 25 to 30 days for a production order.

In 2012, it began recycling its products and obtained GRS and OCS certification. It offers organic yarns and BCI-certified cotton yarns.

Among its major customers are Inditex, Mango, Uniqlo, C&A, Victoria Beckham, Liu Jo and Prada.

Weijie

is a spinning company offering new yarns, notably flock-dyed yarns, core spun yarns and air-jet textured yarns.

The spinner offers a stock service for its two core yarn qualities, for which it produces 4,000 tonnes per year. The yarns of the Cologear range use a "Birlacril" gel-dyed fibre. The dyeing process requires no water, making it an eco-friendly alternative.





Winning Textile

was established in 1988 and offers its own range of rayon and metallic yarns marketed under Winning® Synthetics. The company also has a wide variety of fashion yarns, including fancy and semi-worsted yarns.

The spinner has its own dyeing unit specialising in rayon, viscose and metallic yarns and can therefore offer a stock service for a wide range of colours. The company is known for its fast stock service.

Winning has no minimum order quantities and responds quickly to all its customers' requests. The company can fulfil 1 kg sample orders, with delivery times between 2 and 3 weeks.

All its viscose and rayon yarns carry the Oeko-Tex® Standard 100 label and its products are free of toxic elements, meeting international and environmental standards.

The spinner releases a new collection each season, and regularly adds new qualities to meet the specific needs of its customers.

Its customers include Polo Ralph Lauren, Michael Kors, Tory Burch, Anteprima, Gap, Zara, M&S, Ann Taylor, Brook Brothers and Calvin Klein.

Yarn Talk

is a Chinese fancy yarn spinner specialising in rainbow and variegated yarns. It is the first spinner to specialise in this area and because the spinner is originally from Taiwan, it also has 35 years' experience in brushed voluminous yarns, which account for 80% of its annual production.

It has also modified its machines to produce looped yarns that are very silky compared with standard looped yarns.

It has two different gauges in its brushed yarn qualities, for which it has a stock service of 25 kg per order. It has two offices in Hong Kong.

Its customers include Ralph Lauren, Gap, AEO, A&F, Zara and Mango



Yarns & Colors

is a spinner that specialises in research and innovation and has a comprehensive range of fashion yarns. All its yarns (natural fibres and high-performance synthetic yarns, pure materials and blends, single and plied yarns) are eco-friendly.

The company uses a sophisticated logistics system that guarantees very high customer satisfaction levels.



The company has an extensive range of yarns, which is refreshed twice a year, for knitwear, knitted fabrics, lingerie, socks, lace and embroidery, and can produce special customised yarns for its customers. The company has a stock service for many yarns and its minimum quantities are 5 kg per colour for dyed yarns and 30 kg per colour for ribbon yarns.

The company has offices in a number of countries, including France, the United Kingdom, Spain, Germany and the USA.



BOOTH NO. K04

KEKEXILI

FASHION AND CASHMERE COLLECTION



浙江省湖州市南潯區新城西路1號
No.1 New Town West Road, Nansun, Huizhou, Zhejiang, China
86 572 3060991
86 572 3870111
Jarry-shi@zl-cashmere.com

上海常德路1211號喜華大廈1609室
Rm1609 Baohua Dasha NO.1211 Changde Rd., Shanghai, China
86 21 62319931
86 21 62818711
candy@zl-cashmere.com

香港九龍官塘開源道54號豐利中心5樓03室
Unit 03 5/F, Hewlett Centre, 54 Hoj Yuen Rd., Kwun Tong, KLN, H.K.
852 2341 8662
852 2341 8633
info@zl-cashmere.com

FALL
WINTER
2020/21



www.kekexili-cashmere.com

Huaxiang

Shanghai Huaxiang Woolen Dressing is a semi-niche company with a dye house, a knitwear and jersey production line and a small own-brand business for e-commerce.

Collections are produced by its own Research & Development team, which is also the "Global Development Center" and supplier of H&M. The company works with Shima, Stoll and Cixing machines, including the Shima Whole Garment, 3D simulation system, ADF machines, etc.; production ranges from 3 gg to 16 gg. Huaxiang specialises in jacquard, intarsia, whole garment and 3D simulation.

With customers such as H&M, Ann Taylor, Tory Burch, Eileen Fischer, French Connection and A&F, Huaxiang works closely with the spinners Hubo, Shilead, Lugang, Liangji, Xinfang, Yarns & Colors and Orient Hongda, all exhibitors at the SPINEXPO™ events, to guarantee fast delivery times.



Shanghai Textile

has manufacturing bases in China, Cambodia and Bangladesh, consisting of Stoll, Shima Seiki, Longxing and Cixing flat-bed machines producing gauges from 3 gg to 16 gg. It produces more than 30 million sweaters each year.

Shanghai Textile Decoration is well-versed in the techniques of jacquard and intarsia, warp and weft and knitwear combinations, mix of various knitting techniques, needle punching, whole garment technique and ultra-fine gauges. Their new developments include models created with beaded fabrics, rapid moisture-absorbing and quick-dry fabrics, anti-UV materials; they increasingly use recycled materials. Shanghai Textile Decoration works in close collaboration with spinners that exhibit at SPINEXPO™, including Consinee, Xinao, Dashing, Zhenxin, Biella Yarn by Suedwolle and Hubo, thereby ensuring sufficient yarn availability to guarantee fast production. Minimum order of 300 items per design, at a price of around 4 USD per item. Delivery times approx. 28 days during off-peak periods and 40 days during the peak season. Their customers include Custommade, NafNaf, Breal, Etam, E-Land, C & A, Zara, Macy's and Gordon Smith.

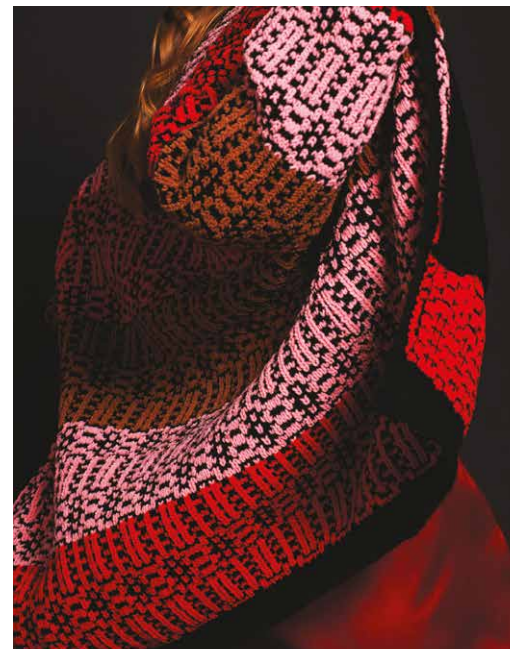
Zhejiang Springair Knitting range covers design to production. It has its own collection in Germany and the United States, produced in collaboration with spinners Consinee, TopLine, UPW, Xinao and M'Oro.

The gauges used start at 1.5 gg and go up to 16 gg, which is Springair's specialty gauge. Springair uses the techniques of jacquard, warp and weft blends and knitwear combinations, and specific wash and print techniques.

The company works on Cixing machines with gauges ranging from 7 gg to 16 gg, and outsources production on Stoll and Shima machines. With a capacity of 100,000 items per month, the manufacturing time is normally 60 days for the production of 500 items per design, with a minimum of 200 items per colour.

More specifically, Springair works with natural materials or recycled materials such as cashmere, wool and cashmere, silk and cotton.

For 20 years, Springair Knitting has enjoyed an excellent relationship with its customers, who include Marc O'Polo, Gerry Weber, Bran Hamburg and Delicatelove.



PERINO™

BY WOOLYARNS

伯丽奴



KAAMERA

— NEW ZEALAND —

卡梅拉

DISCOVER OUR LUXURIOUS COLLECTION OF YARNS

Perino is a first in cashmere, merino and silk yarn blends with New Zealand Brushtail Possum.

Kaamera is a uniquely New Zealand made yarn that brings the very best of nature and human skill together.

Visit stand O 01 to learn more.

发现我们的品牌奢华纱线系列

新西兰WOOLYARNS公司的伯丽奴品牌系列在全球首发研制了集羊绒、美利奴羊毛、桑蚕丝与新西兰帚尾袋貂绒于一体的混纺系列纱线。

卡梅拉Kaamera是一种独特的由新西兰制造的、将最好的自然品质和人类技能融合在一起的华丽纱线。

访问我司展位O 01了解更多信息。

ORIENT

H O N G D A

浙江沃楸特实业集团有限公司

SPINEXPO SHANGHAI

Autumn
Winter 2020

Tête

A NEW LUXURY



Booth No. 展位号: B02

Info@Orientzj.com

@Orient_Official

www.Orientzj.com



I.O.S APP
Download



Android APP
Download



WeChat
Download



Google APP
Download



河北宏业羊绒有限公司
HONGYE CASHMERE CO.,LTD.

Tel : +86(0)319-8291996 8291997
Fax: +86(0)319-8291658
E-mail : info@hongyecashmere.com

UPW

GENUINE STOCK SUPPORT

FALL WINTER 2020

2020/2021年的秋冬季在UPW的世界里将会是一个绚丽多彩的魔盒，我们在一些经典纱线的基础上进行创新设计，呈现出色彩丰富、新颖又令人兴奋的混合纤维材质，将纱线设计变得更加有趣，带给人们意想不到的新奇感。同时，最高可持续性标准（Sustainability）也依旧保持不变。

Fall-Winter 20/21 at UPW is going to be a season full of colour, of new and exciting fibre mixes, with some original developments on our classic yarns and the same commitment to maintaining the highest sustainability standards.

展位号Stand

H01 & H03

UPW

U-LAB

SPINEXPO SHANGHAI

请扫描二维码关注 UPW 官方微信
和在 Apple AppStore 内下载我们的 APP
For more information, please follow UPW official
wechat and you may find us on
Apple AppStore by scanning above QR code.



WWW.UPWHK.COM