

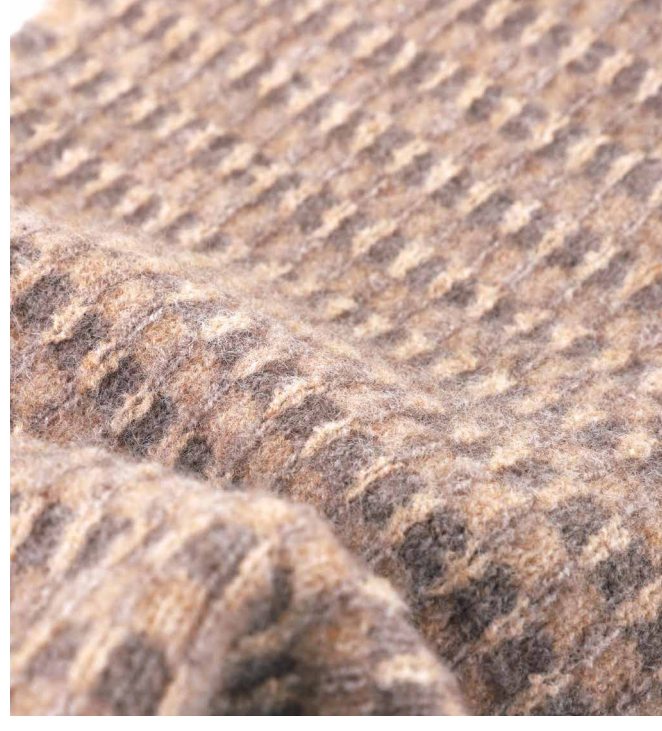
BESTSELLERS

BY



— FLUFFY - CORE SPUN - EYELASH - IMITATION FUR —

HUBO



HPW 23009

1/9 Nm - 66% Recycled Polyester
32% Polyester - 2% Spandex

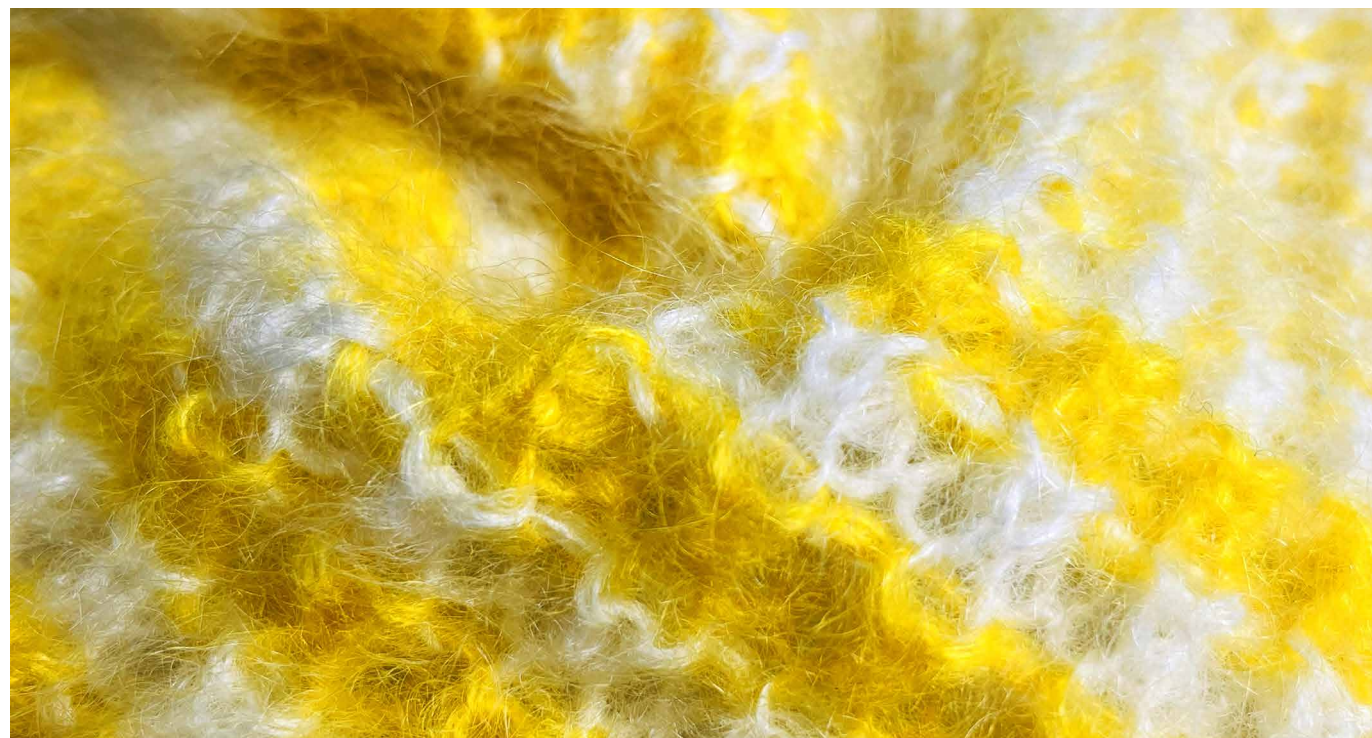
With clear texture and even fluff, the yarn is tender and elegant, lightweight and with great stretch extensibility; it can be widely used in fall winter season. Included sustainable fiber makes the yarn a great choice for green product.



HPW 23002

1/4.3 Nm
74% Polyester - 26% Recycled Polyester
Made by sustainable fiber, this feather yarn has extremely soft hand feel, suitable for lounge wear.

LUGANG

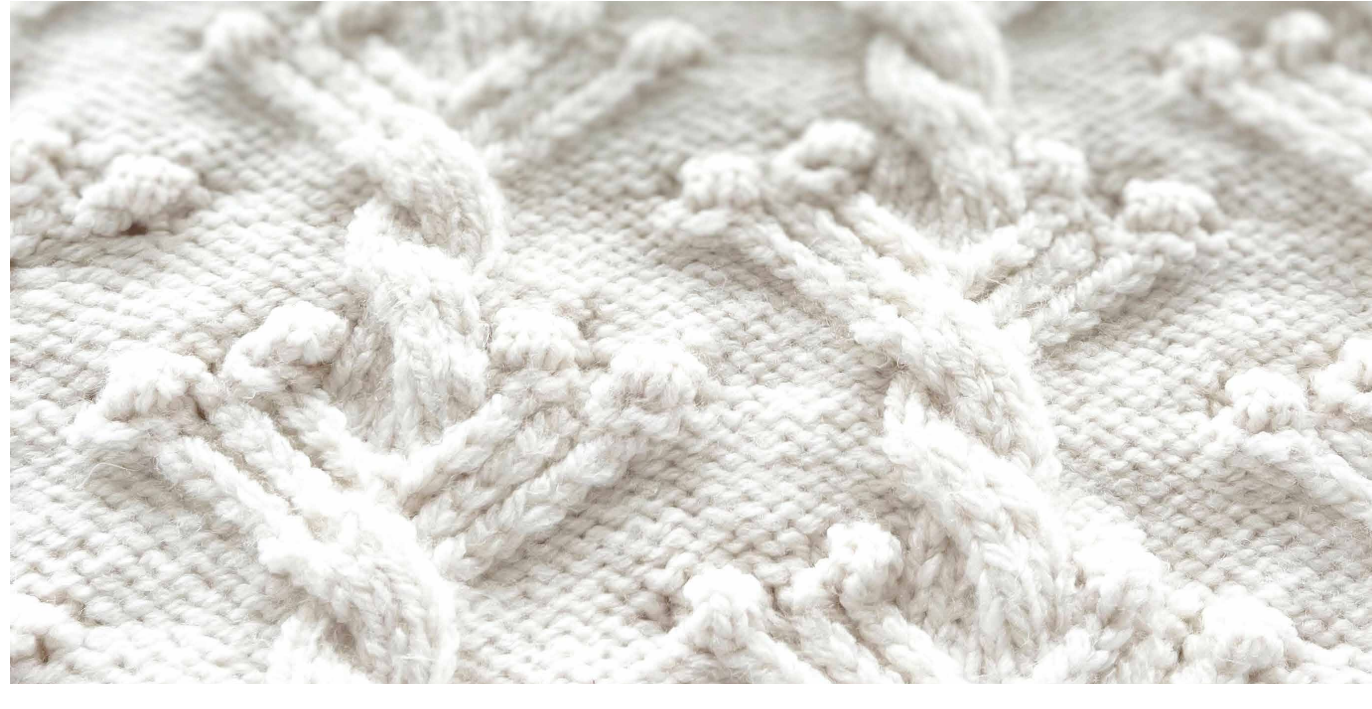


PALIO

1 / 4.5 Nm - 55% Mohair - 12% Wool - 33% Nylon

This yarn adopts the classic combination of high proportion of mohair & wool. Spinned by machine imported from Italy, it makes the fabric feel softer, fluffy and thick, with good warmth and elasticity. The yarn is suitable for different types of fabrics, and the color can be changed according to the mood.

HUASHENG



GTHS 01903

3/8.5 Nm - 67% Acrylic - 25% Recycled Polyester - 8% Polyester

The rough core-spun makes the cable pattern more dimensional and voluminous. The combination of the pang pang and cable pattern adds a lovely visual effect. It is the most classic and versatile yarn for winter and one of the most popular products this season

YUSHENG



EYNN 15000-10G

15 Nm - 47% Nylon - 53% Recycled Nylon

Comfortable skin friendly, can be used in handicrafts, sustainable regeneration of environmental protection raw materials.



LRAN06039-21

6 Nm - 39% Nylon - 43% Acrylic
9% Wool - 9% graphene

Soft touch, good warmth protection, various colors, environmental protection raw materials.

XINFANG

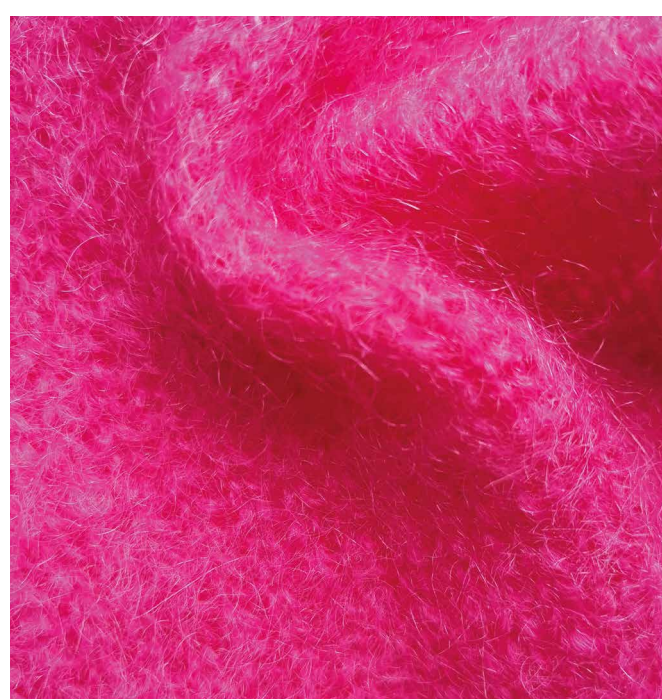


XFBS 07-18

1 / 7 Nm - 50% Acrylic - 38% Recycled Polyester - 12% Recycled Wool

The recycled wool used for air spun yarn makes it unique in appearance, comfortable in hand, fluffy and plump, breathable, warm, and quick drying.

TOP LINE



TARA

Nm 2600 - 70% Mohair - 30% Wool

From the perspective of animal protectionism, the combination of angora and Australian wool brings the overall effect of imitation fur; the fluffy and beautiful appearance strength interprets the universal wearability of men's and women's clothing, and 100% natural fibers brings a comfortable wearing experience.



Trends and products www.spinexplore.com

WWW.SPINEXPO.COM