



HONG KONG - PARIS - NEW YORK - SHANGHAI

# Save the dates

B2B Presentations

**HONG KONG:** 8-9 FEBRUARY 2023

THE SPACE

**PARIS:** 14-15 FEBRUARY 2023

GALERIE JOSEPH

EXHIBITION

**SHANGHAI:** 28 FEB. / 1-2 MARCH 2023

WORLD EXPO CONVENTION & EXHIBITION CENTRE

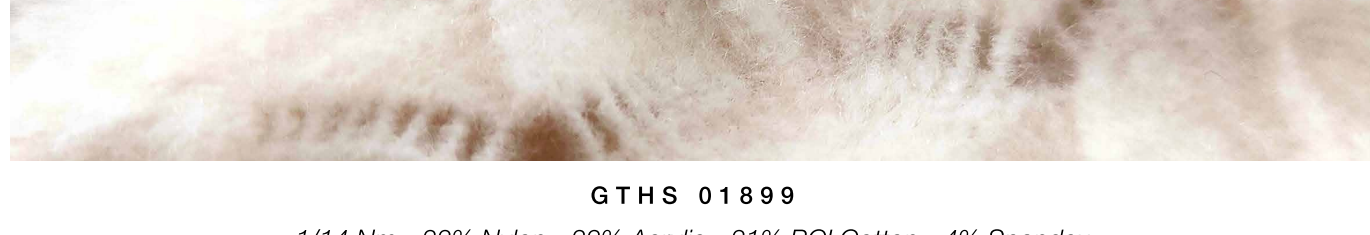
## BESTSELLERS

BY



CASHMERE & CASHMERE LIKE

**HUASHENG**



**GTHS 01899**

1/14 Nm - 33% Nylon - 32% Acrylic - 31% BCI Cotton - 4% Spandex

Using ordinary raw materials and changing the spinning process result in this yarn, delicate and soft as cashmere, both skin-friendly, warm and stylish.

**UPW**

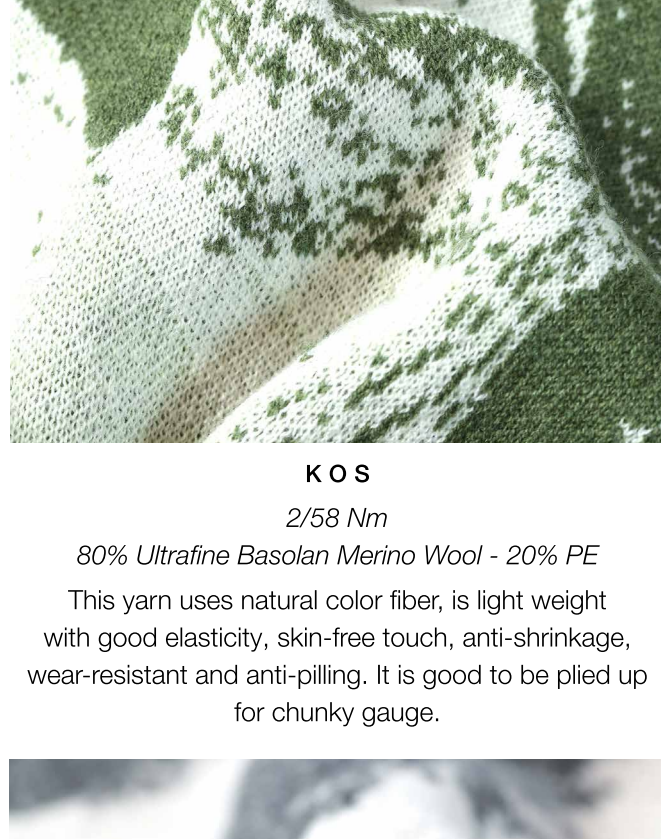


**CASHMERE PURE**

2/26 Nm - 100% Cashmere

This is one of UPW most precious yarn with a luxuriously soft hand feel. UPW skilled technicians use traditional mule spinning to turn the fibers into a yarn with superlative qualities, bringing exceptional softness, lightness and warmth expected from noble material. The cashmere fibers are tested for purity at an independent laboratory to assure that UPW Cashmere Pure is pure and traceable.

**ZHONGDING**



**KOS**

2/58 Nm

80% Ultrafine Basolan Merino Wool - 20% PE

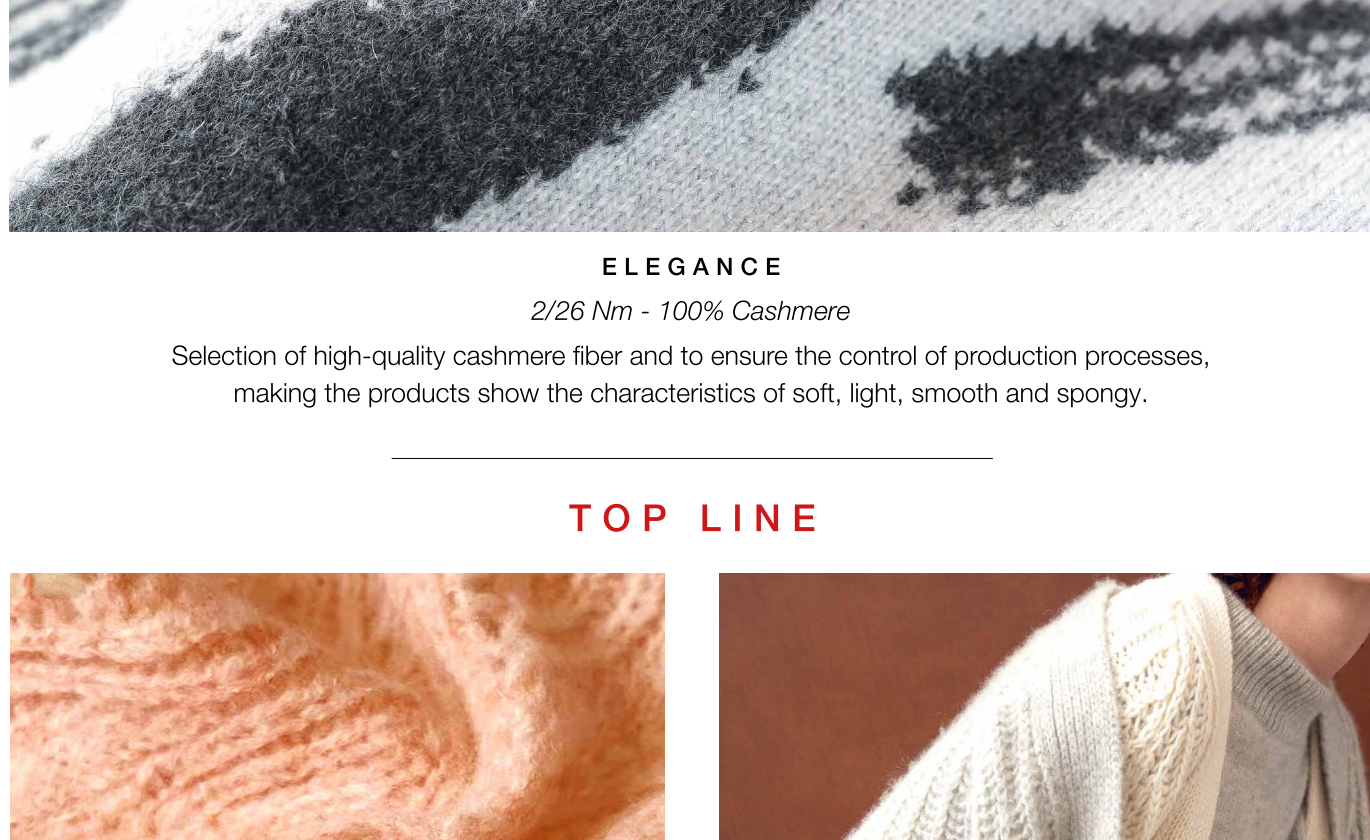
This yarn uses natural color fiber, is light weight with good elasticity, skin-free touch, anti-shrinkage, wear-resistant and anti-pilling. It is good to be plied up for chunky gauge.



**CELESTE**

2/68 Nm - 78% Cashmere - 22% PE

The yarn retains the characteristics of pure cashmere and has excellent stretch resistance. It is soft touch, fine and light weight, excellent comfort and dimensional stability, and can be washed gently by machine. It is skin free and warm.

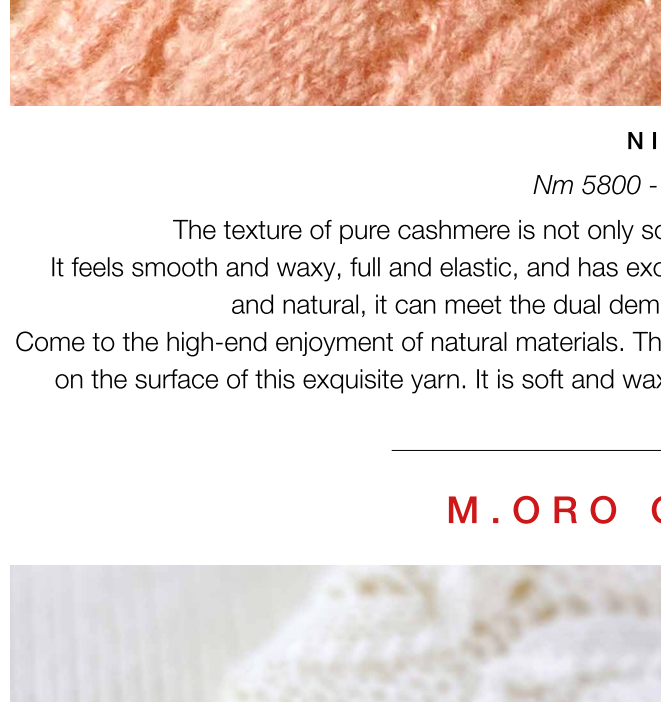


**ELEGANCE**

2/26 Nm - 100% Cashmere

Selection of high-quality cashmere fiber and to ensure the control of production processes, making the products show the characteristics of soft, light, smooth and spongy.

**TOP LINE**



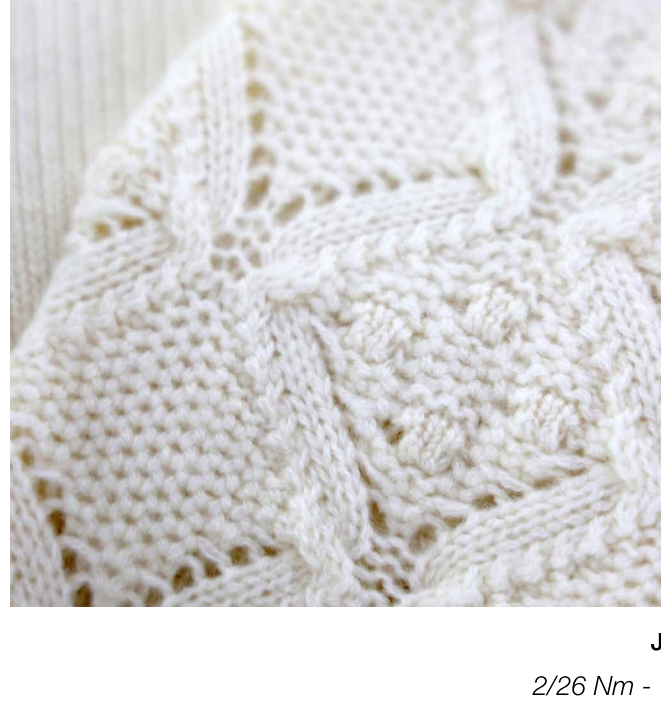
**NIMBUS**

Nm 5800 - 100% Cashmere

The texture of pure cashmere is not only soft and comfortable, but also lighter and warmer. It feels smooth and waxy, full and elastic, and has excellent quality. With a hazy visual sense, intellectual, elegant and natural, it can meet the dual demand of temperament and warmth retention.

Come to the high-end enjoyment of natural materials. The unique brushed yarn design makes the cashmere fibers free on the surface of this exquisite yarn. It is soft and waxy, soft and firm, the hardness and softness are combined.

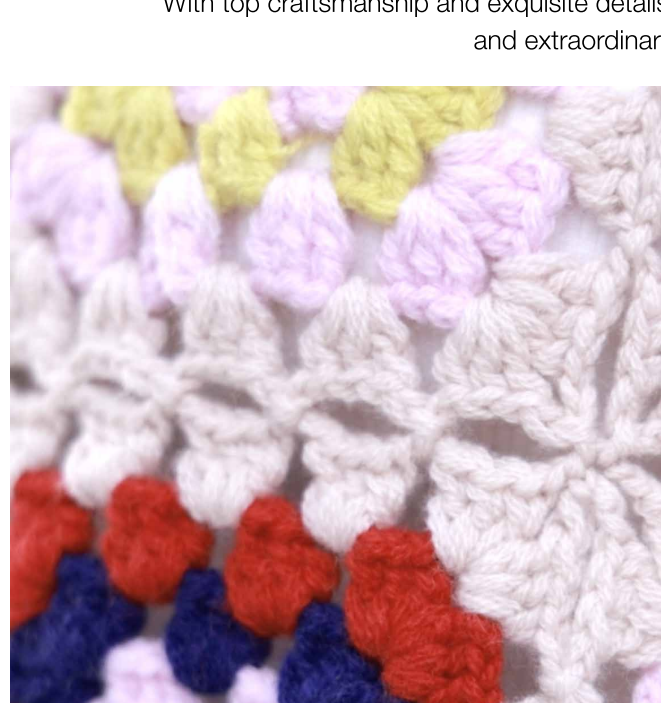
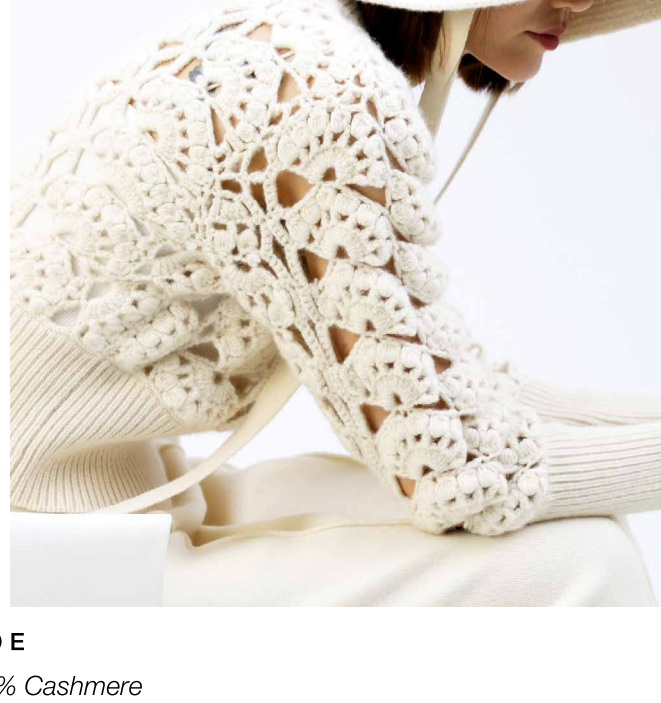
**M.ORO CASHMERE**



**JADE**

2/26 Nm - 100% Cashmere

With top craftsmanship and exquisite details, this yarn brings the delicate, skin-friendly touch and extraordinary quality of cashmere.



**AMBER**

2/26 Nm - 70% Wool - 30% Cashmere

The yarn has both the soft touch of cashmere and the fine and smooth texture of wool, giving the yarn a richer quality.



**CHILL**

2/26 Nm - 60% Pre-Consumer Recycled Cashmere - 40% Cashmere

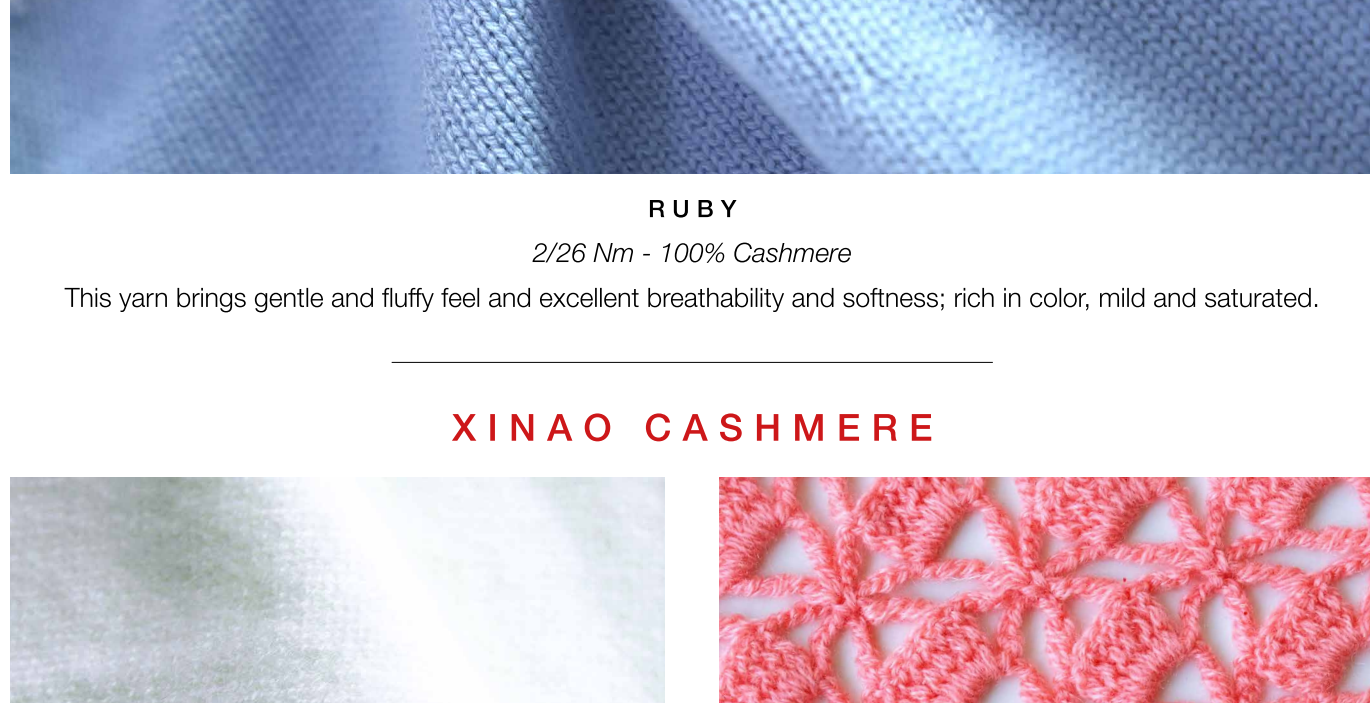
The demand for cashmere in the market continues to grow. Inner Mongolia cashmere exports account for 1/3 of the world total revenue. Therefore, recycling and reusing cashmere is a respect for pastoral areas and global environmental protection. M.ORO carefully screens the leftover 100% pure cashmere yarns from the industry, turns it into fiber by professional mechanization, and mix it with new cashmere at a ratio of 60% recycled to bring recycled cashmere that is extremely friendly and sustainable.



**LUNA**

2/26 Nm, 2/15 Nm - 100% Cashmere (Undyed)

Each ton of undyed cashmere produced will save 5.5-6 tons of gas, 60-100 tons of water, 200-500 KWH of electricity, 0 dyes, 0 auxiliaries. We keep the length of the fiber to 36-38 mm, 15.5-15.8 micron. Using the excellent fibers intensively delivers the most natural quality.



**RUBY**

2/26 Nm - 100% Cashmere

This yarn brings gentle and fluffy feel and excellent breathability and softness; rich in color, mild and saturated.

**XINAO CASHMERE**



**DELUXE**

2/26 Nm - 100% Baby Cashmere

The product is made of baby cashmere from young goats growing from July to November. Products made from this yarn are light, warm, soft and fine and more comfortable than ordinary cashmere. The yarn is extremely soft, as baby's skin.



**CASHQUEEN**

2/26 Nm - 100% Cashmere

Using fine combed cashmere as raw material, the product is creamy and soft, light and the suede is plump with warm and fluffy hand feel.

Trends and products [www.spinexplore.com](http://www.spinexplore.com)

PRE-REGISTER: [WWW.SPINEXPO.COM](http://WWW.SPINEXPO.COM)