



HONG KONG - NEW YORK - PARIS - SHANGHAI

SAVE THE DATES SPINEXPO™ SHANGHAI

12-13-14 APRIL 2023

WORLD EXPO EXHIBITION & CONVENTION CENTER

1099 GUOZHAN ROAD - PUDONG 200126 - SHANGHAI



FIBRES | YARNS | KNITS | CIRCULAR KNITS | ACTIVEWEAR | SOCKS | HAND-KNITTING WOOLS

WELCOME BACK TO THE WORLD OF SPINEXPO™

A UNIQUE KNIT AND SPIN EVENT

SPINEXPO™ is an international event that brings together top-class spinners and integrated high-fashion knitwear manufacturers.

The 140 exhibitors of the coming session introduce their best-selling products.

VISIT US AT WWW.SPINEXPO.COM.

PRE-REGISTER AND VIEW THE FULL LIST OF EXHIBITORS.

Free admission for textile professionals with a business card.

Don't forget your business card!

FOCUS ON EXHIBITORS' BEST SELLERS.



The products have been certified by RWS, GRS, OCS, BCI, OEKO-TEX and other sustainability standards.

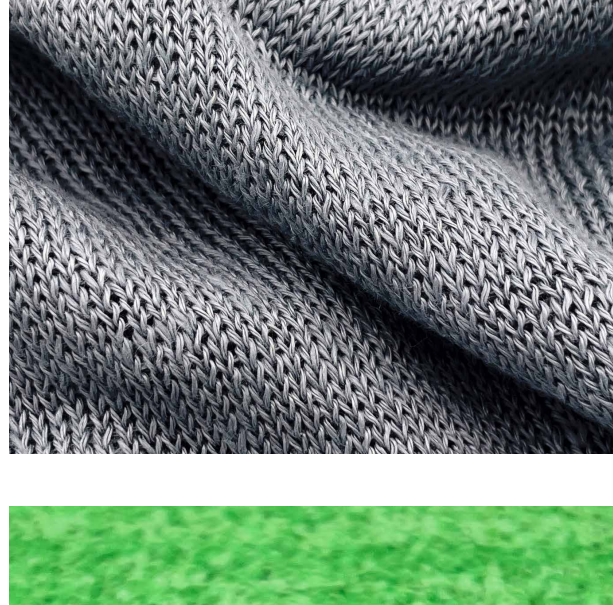
The best-sellers of the coming season are:

VINCI 3/72 Nm, 100% H.T Wool

Selected Australian merino wool gives VINCI a flexible texture and stable shape, very light and comfortable to wear. Applicable to every season.

DRILY 1/39 Nm, 57% Cotton, 43% Polyester

Made of high staple cotton and functional and refreshing polyester fiber. Slightly elastic, soft, comfortable, well-formed, skin-friendly, delicate, stylish, dry and antibacterial. A yarn suitable for casual and trendy knits.



EXCEED-R 1/60 Nm, 100% Polyester

EXCEED-R is made from recycled polyester using special equipment and technology. Its elasticity is even and stable, and its feel is soft and plush. Knits made from EXCEED-R are soft, light, smooth and plump, making it the first choice of high-end sportswear and designer brands.

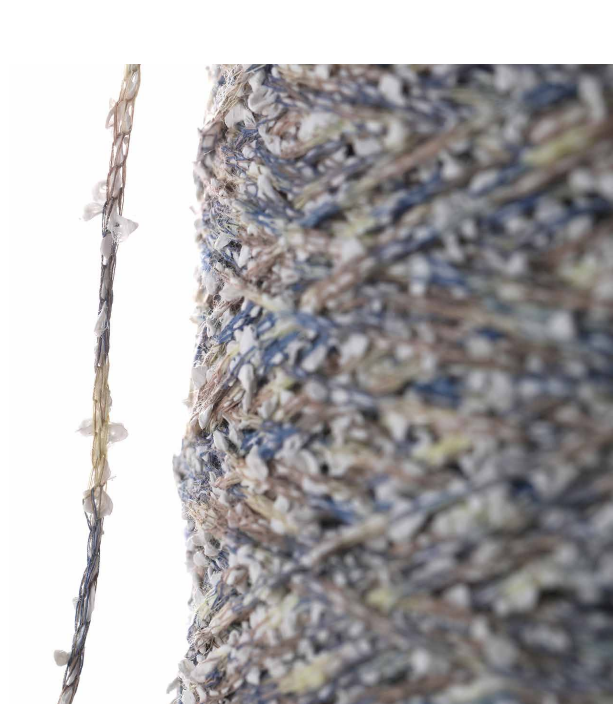
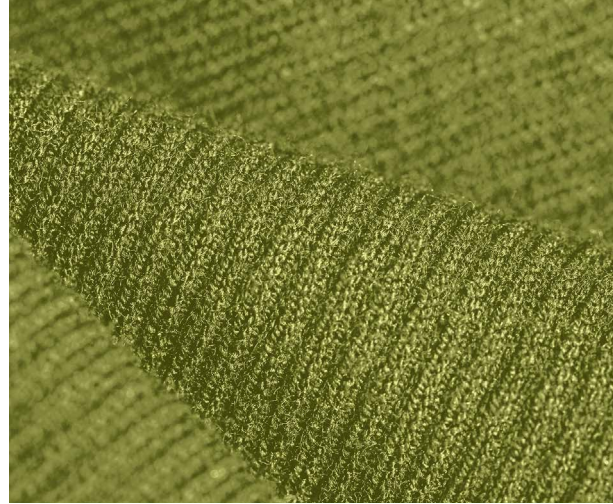
EXCEED-R is produced in China with a reliable schedule and a relatively stable price. All 96 colors in the color chart are available in stock.

GOSPEL & LOCO 2/30 Nm, 100% wool /

2/20 Nm, 100% wool / 2/28 Nm, 100% wool

GOSPEL and LOCO, YIWAGOE's light weight heavy gauge wool, are made with patented Japanese technology and are 20%~30% lighter than normal wool. A cashmere-like feel, including fluffiness, softness and warmth, only at the price of wool. LOCO is based on the successful GOSPEL experience and is made from better material through an improved spinning process, better in terms of anti-pilling, effect and color fastness.

Both 2/20 and 2/28 are available in different gauges.



SPRING LIKE S5984 2/68 Nm, 44% Cotton

10% Silk, 8% Linen, 38% PBT

Shi-Kwan's subordinate brand «Guideline» overcame technological difficulties and developed a core spun yarn with 10% silk. This yarn combines the moisture absorption and breathability of cotton, the delicate texture of silk and the natural crispness of linen. The surface of the fabric is smooth, with a natural sheen, and the fabric is soft as spring. This set of yarns has an exceptional anti-pilling function.

MINSK S4223

1/33 Nm, 50% Acetate, 50% Nylon

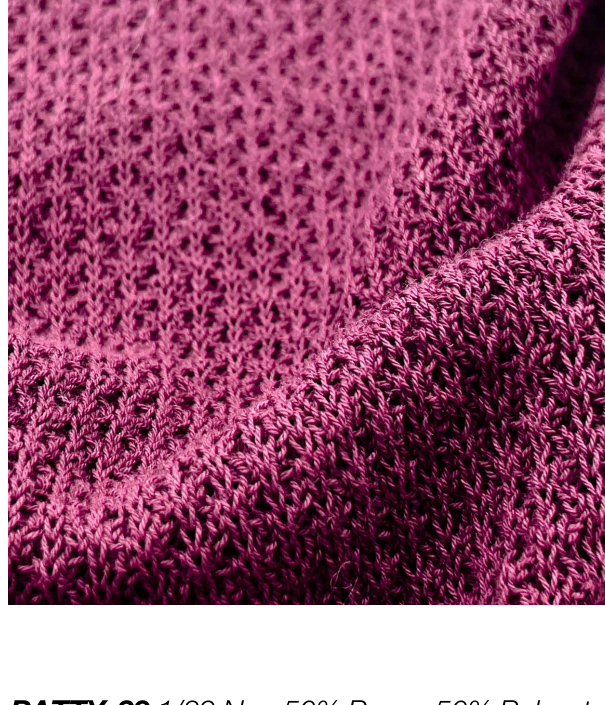
We have iterated the ingredients of the traditional viscose/nylon pre-twist elastic yarn found on the market, retaining the dryness and elasticity of nylon; the raw material is the natural pulp of North American conifers, which is added to acetic acid by esterification reaction to produce an acetate fiber instead of the viscose type filament. Acetate is traceable from the forest to the finished product, using a closed loop production process, very good environmental protection, recycled fiber and can be degraded naturally. Acetate has excellent breathability, which absorbs and releases human sweat into the air, preventing the growth of bacteria and dust mites. Iterations of Minsk surry yarn are skin-friendly, soft, antibacterial and fresh, as well as brightly colored and draped.

SHANGHAI YIWAGOE TEXTILE

Shanghai YIWAGOE Textile (YSK), established in 2003, is a developer, manufacturer and seller of a wide range of high-end and trendy yarns.

Quality and service first are the values YSK stands for. After 2004, it established a FASTEX branch in Hong Kong and a VERYTEX branch in Tokyo.

Inspired by market trends, YIWAGOE optimize and combine products every season. In addition to its exclusive products, the spinner is also partner with overseas yarn producers to develop and sell a variety of innovative and superior products.



PATTY-29 1/29 Nm, 50% Paper, 50% Polyester

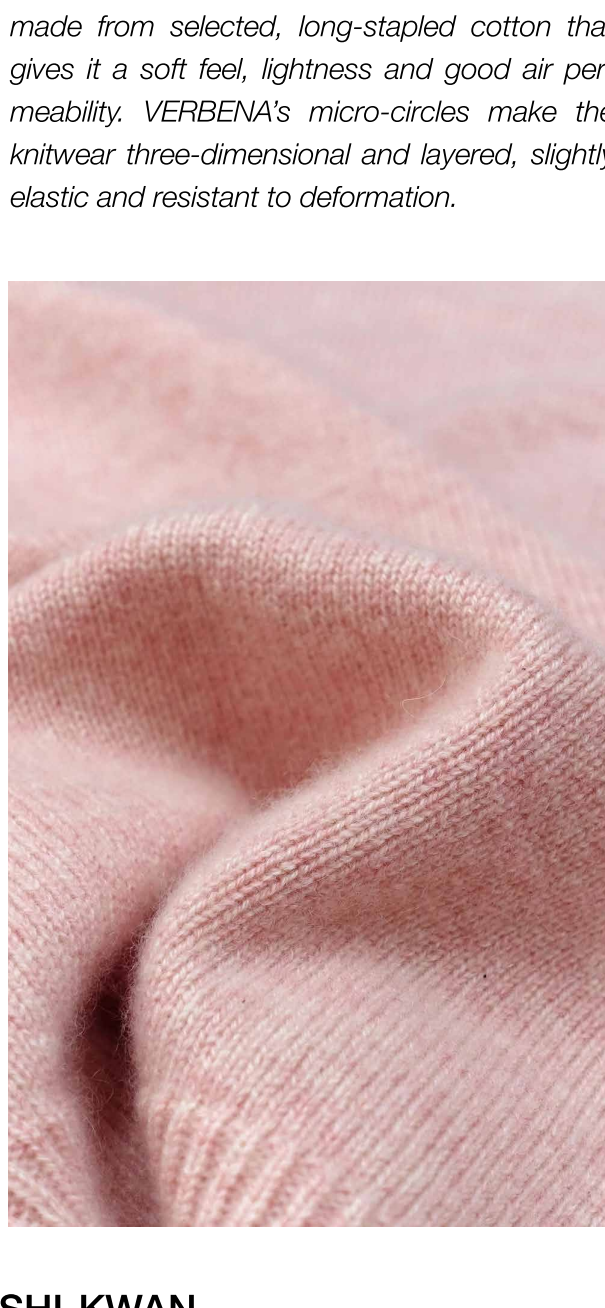
Made from Japanese paper yarn. By processing the cellulose-rich pulp of Manila hemp, the proprietary Japanese technology produces an original paper material that is even, fine, strong, and is wonderful for rendering the artistic texture and natural blended color to the yarn.

The yarn is dry, soft and cool like linen, but 1/3 lighter in weight, with good moisture absorption. Compared to linen yarns, paper yarns have no knots and are more elegant, naturally anti-bacterial like its raw material.

MINO WASHI (Japanese paper from the Mino region) is made from royal paper and has been designated as a UNESCO intangible cultural heritage site with 1300 years of history. The label «MINO WASHI» has a strong authority, and only the member of the Chamber can provide the label. The label «MINO WASHI» can be provided on the thread.

VERBENA 1/30 Nm, 70% Cotton, 30% Nylon

VERBENA is a popular micro-textured art yarn made from selected, long-stapled cotton that gives it a soft feel, lightness and good air permeability. VERBENA's micro-circles make the knitwear three-dimensional and layered, slightly elastic and resistant to deformation.



SHI-KWAN

Shi-Kwan is a textile raw material manufacturer established in Taiwan CN.

Shi-Kwan is the only metal manufacturer to have obtained the GRS certificate and is the official supplier of many domestic and international brands.

Shi Kwan has cooperated with more than 80% of the fast fashion brands in the world.

For the upcoming season, Shi Kwan offers:

QIANMU S5860 2/50 Nm, 45% Wool,

17% Acetate, 10% Cupro, 28% PBT

Shi-Kwan's subordinate brand «Guideline» developed this set of 45% wool core spun yarns to maximize the natural moisture absorption and breathability of Qianmu. Shi Kwan added 10% Cupro fibers, which are antibacterial and antistatic, and 17% acetate fibers, for easy care and temperature regulation. The new composition and high percentage of natural fibers improve the traditional yarn, while maintaining softness and elasticity to the touch, with a natural fresh feel. This is the key yarn to launch for the season.

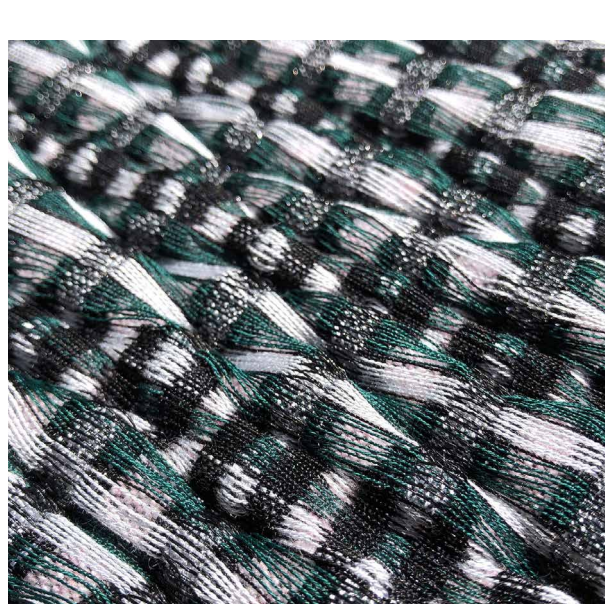
The new composition and high percentage of natural fibers improve the traditional yarn, while maintaining softness and elasticity to the touch, with a natural fresh feel. This is the key yarn to launch for the season.

ROCK FLOWER S5713

1/1.4 Nm, 66% Polyester, 34% Cotton Border

A unique process gives this yarn a mottled beauty, as if the light coming down blurred the border and mottled the colors, producing a pinkish color blend.

The 34% cotton content of the yarn makes the woven piece clean and leaves a natural visual impact of the mark of time.



COMING AUTUMN/WINTER SESSIONS

SPINEXPO™ PARIS B2B - 5 & 6 July 2023

Espace Joseph

SPINEXPO™ NEW YORK B2B - 11 & 12 July 2023

Metropolitan Pavilion - The Suite

SPINEXPO™ HONG KONG B2B - 19 & 20 July 2023

The Space

SPINEXPO™ SHANGHAI - 29-30-31 August 2023

World Expo Exhibition & Convention Centre - Pudong

PRE-REGISTER:

WWW.SPINEXPO.COM