



HONG KONG - NEW YORK - PARIS - SHANGHAI

SAVE THE DATES

SPINEXPO™ SHANGHAI

12-13-14 APRIL 2023

WORLD EXPO EXHIBITION & CONVENTION CENTER
1099 GUOZHAN ROAD - PUDONG 200126 - SHANGHAI



FIBRES | YARNS | KNITS | CIRCULAR KNITS | ACTIVEWEAR | SOCKS | HAND-KNITTING WOOLS

PRESENTING
SPRING/SUMMER 24 COLLECTIONS

REMINDER: PRE REGISTRATION IS COMPULSORY

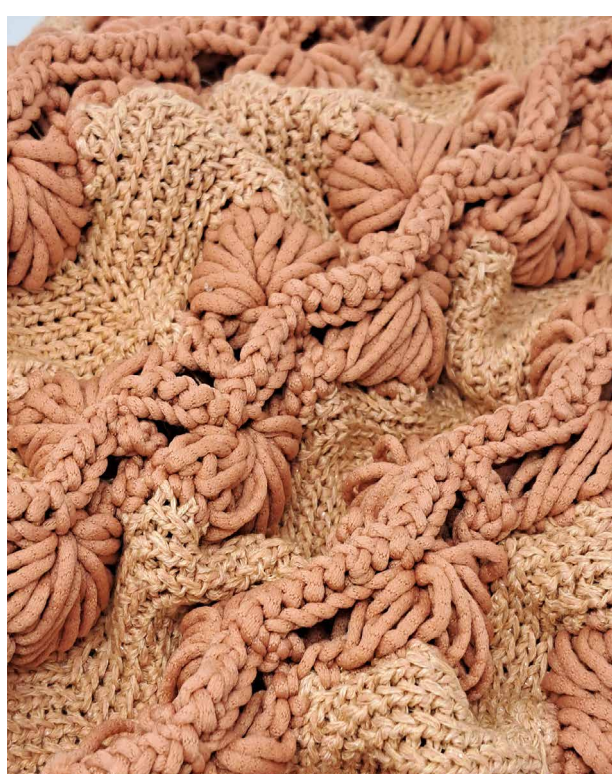
YOU NEED TO PRE-REGISTER ON OUR WEBSITE
WWW.SPINEXPO.COM

and be accepted by the exhibition management to receive
a bar code that you will need to present at the entrance of the Venue,
together with an ID and a business card bearing the same name.
Suppliers, students and unrelated visitors will only be allowed
third day of the show.

Please check your pre-registration message!

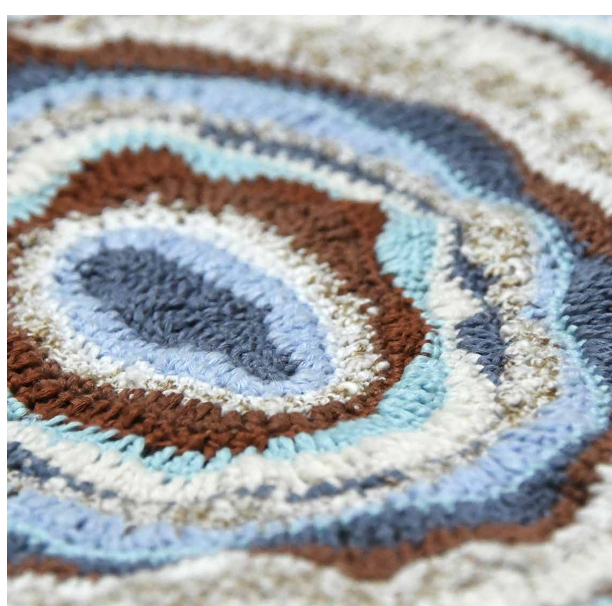
SPINEXPO™ Shanghai offers the largest platform between top level partners
of the textile chain with top-level spinners and knitters,
working together in tight collaboration.
SPINEXPO™ caters to the brand names, knitters, producers of knitted fabrics,
weavers, lingerie makers, the hosiery and sock industry,
home furnishing and hand-knitting yarns.

MAIN TREND AREA AT SPINEXPO™



*HYGGE showcases the luxury of fibers for a
springtime vibe that evokes union with nature,
with colors introducing floral patterns, for a
knitwear that uses intarsia techniques and
labor-intensive embroidery, visible mending,
which mimics craftsmanship.*

*DOUGH is playful, using puffy yarns with a nylon
core, thicker naturally spongy yarns, thick and
crisp linens. Our designers have chosen to pre-
sent this group with fun and colorful head-
pieces, beachwear in sets combining crochet
and flat knitting. They will be complemented by
intricate trinkets and knitted goodies.*

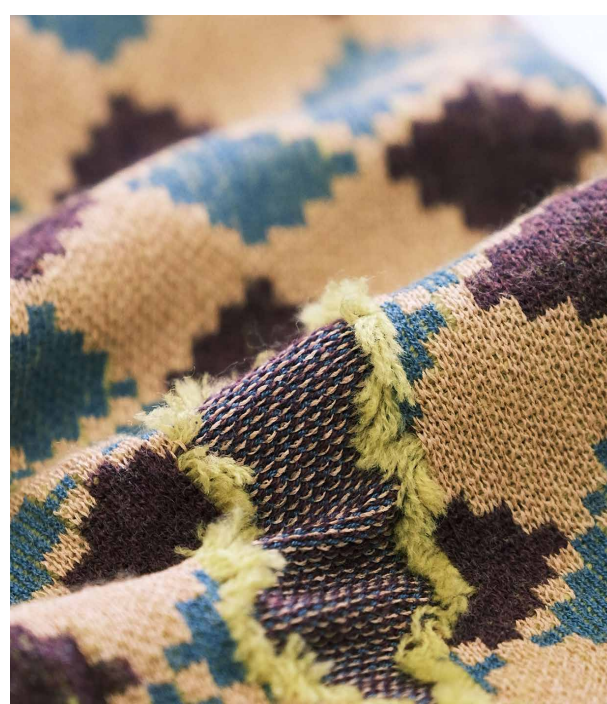


*This season, SPINEXPO presents each mood
of its knitwear trend directions differently.*

*In a specific architectural environment, each
trend will be illustrated by a constellation of
swatches that branch out to the main trend,
allowing for an in-depth study of all aspects of
this style direction, with different yarns and
techniques, presented in smaller color capsules
drawn from the full palette.*



*PIGMENTS will take us on a tintorial journey
through cotton yarns and experimentation with
different types of washes creating dissipative
patterns, revisited tie & dye techniques mixed
with knit stitches or reverse braiding techniques
mimicking the look of dye or broken patterns by
layering diaphanous multi-panel garments.*



*MISCEGENATION offers a great opportunity to
mix colors, textures and patterns in knits.
Patchwork swatches by piecing together unex-
pected textures, revived jacquards reworked
into new silhouettes or adding yarns to create
sheer parts, and of course, exploring stitches in
a myriad of colors knitted in innovative machine
techniques*

NEXT SEASON DATES

SPINEXPO™ PARIS B2B - 5 & 6 July 2023

Espace Joseph

SPINEXPO™ NEW YORK B2B - 11 & 12 July 2023

Metropolitan Pavilion - The Suite

SPINEXPO™ HONG KONG B2B - 19 & 20 July 2023

The Space

SPINEXPO™ SHANGHAI - 29-30-31 August 2023

World Expo Exhibition & Convention Centre - Pudong

PRE-REGISTER:

WWW.SPINEXPO.COM