



HONG KONG - NEW YORK - PARIS - SHANGHAI

SAVE THE DATES

SPINEXPO™ PARIS B2B

5 & 6 JULY 2023

GALERIE JOSEPH



YARNS - FIBRES - KNITWEAR - KNITTED PRODUCTS

WHAT'S NEW AT SPINEXPO™ ?

A number of exhibitors who are flatbed knit specialists have recently added to their range with yarns specifically for circular knits.

This range, which supplements the flatbed knit collections, is interpreted by our stylist, the circular knit specialist **Eva de Laat**, in our trends section "Mixmatching".

The ultimate dichotomy.



LUGANG : an exploration of a perfectly refined circular knit yarn used to create the next generation of second skin garments. Finding wool that is suited to circular technology is a challenge, but when we come across yarns refined for circular knitting, we can see many possibilities. One of the great benefits of merino wool is its ability to deliver many functional aspects whilst remaining a lightweight second skin. We want to use Lugang yarns to create second skin thermals and underwear to challenge the normal associations with wool.

Entitled STEP OUT, this presentation is the response to a need for change broken down into three phases, "unfreeze, flow and refreeze".

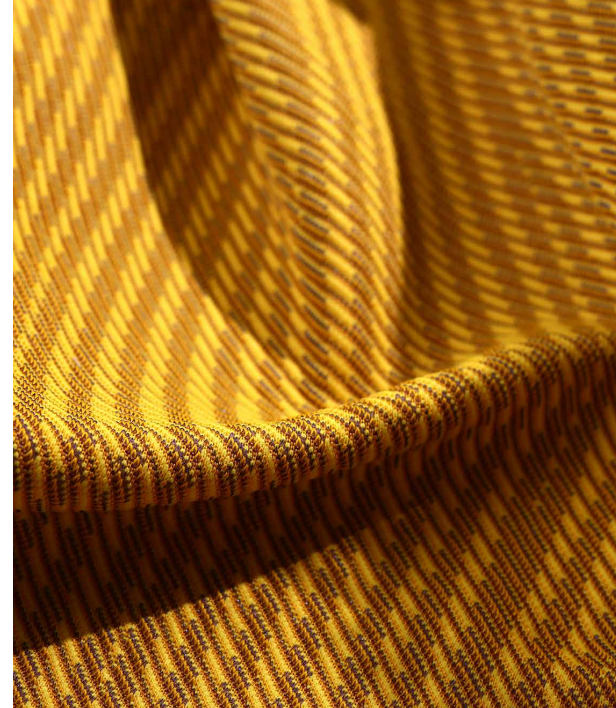
The designer uses new yarns that blend and mix-match different fibres to reap the benefits of different fibre qualities and sustainable production methods.

It explores the potential of both synthetic and natural fibres, which can be used for many different yarn applications.

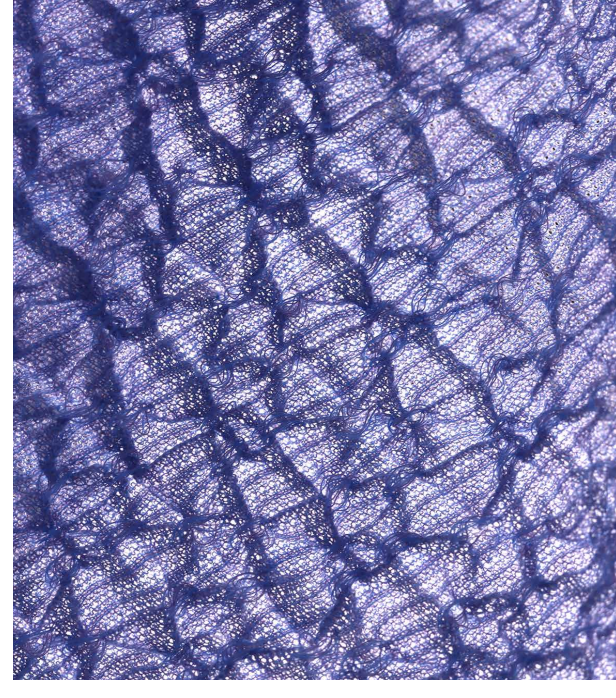
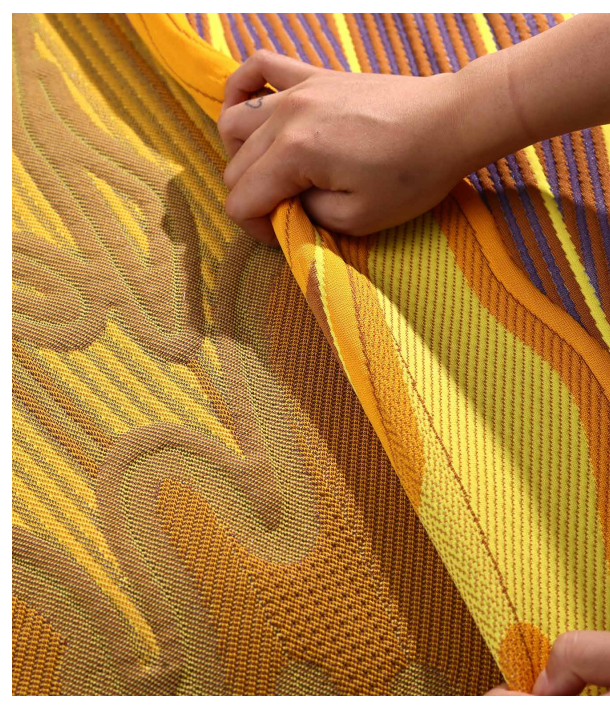
For each part of the capsule one yarn supplier is used, highlighting their specific strengths, consumer value and expertise.



SHI KWAN : The blending of fibres, whether synthetic or natural, offers unique textures and finishes. We work with these yarns to merge them with stitches in order to create innovative colouring, texture combinations and functional qualities. These textiles will be used to create a range of lifestyle products with a sporting twist, as well as accompanying accessories & home textiles.



XINAO : By exploring different wool blends from base to mid layer, we can highlight the natural properties of wool and use blends that contain these properties. Xinao's wool range can be used to create a number of different textiles, and we showcase this by creating mid layers, footwear and interior textiles.



Many other exhibitors present circular and weaving yarn collections, in particular Südrolle Group, but also Hubo, Huasheng. You are welcome to find out more about our presentations and explore the new collections in depth.



YARNS & COLORS : our range of yarns includes blended synthetic and natural fibres that can be knitted on single & double jersey machines, as well as footwear machines. This allows us to be bold with our exploration of textiles, and we explore 3D structures and functional textiles in both sportswear and footwear.

**FOR THE LIST OF EXHIBITORS
AT THE JULY 2023 B2BS,
PLEASE GO TO OUR WEBSITE:**

WWW.SPINEXPO.COM

B2B

SPINEXPO™ NEW YORK

11 & 12 JULY 2023

THE SUITE - METROPOLITAN PAVILION

123 WEST 18TH STREET - NEW YORK - NY 10011

9.00 AM TO 6.00 PM

SPINEXPO™ HONG KONG

19 & 20 JULY 2023

THE SPACE

2/F, D2 PLACE ONE - 9 CHEUNG YEE STREET - LAI CHI KOK, KOWLOON

10.00 AM TO 6.00 PM

DON'T MISS

SPINEXPO™ SHANGHAI

29-30-31 AUGUST 2023

WORLD EXPO EXHIBITION & CONVENTION CENTRE

**THE LARGEST FOCUSED EXHIBITION
FOR YARNS, FIBRES, KNITWEAR AND KNITTED PRODUCTS**

CHECK THE EXHIBITORS' LISTS & PREREGISTER

WWW.SPINEXPO.COM