



HONG KONG - LOS ANGELES - NEW YORK - PARIS - SHANGHAI

SAVE THE DATES

AUTUMN WINTER 2026-27 COLLECTIONS



YARNS – FIBRES – KNITWEAR – KNITTED PRODUCTS

SPINEXPO™ has become the most comprehensive event in the high-end spinning and circular knitting sector. The show is held in Shanghai, China, twice a year.

SPINCLUB is an export-oriented B2B version of SPINEXPO™ Shanghai's leading exhibitors. SPINCLUB is aimed exclusively at textile buyers and does not accept suppliers.

SPINCLUB PARIS

17-18 JUNE 2025

ESPACE 38

38, RUE DU MONT THABOR - 75001 PARIS - FRANCE

SPINCLUB HONG KONG

24-25 JUNE 2025

SOHO HOUSE

33 DES VOEUX ROAD WEST - SHEUNG WAN, HONG KONG

SPINCLUB NEW YORK

8-9 JULY 2025

"THE GALLERY & THE SUITE" METROPOLITAN PAVILION

123 WEST 18TH STREET - NEW YORK - NY 10011

SPINCLUB LOS ANGELES

15-16 JULY 2025

COOPER DESIGN CENTRE

860 SOUTH LOS ANGELES STREET, SUITE 1100 - LOS ANGELES CA 90014

Pre-registration & list of exhibitors : www.spinexpo.com

This coming session welcomes a different type of trend presentation divided into two distinctive parts around 3 color charts.

This newsletter introduces the second part:



THE COLDS

URBAN ENDURANCE

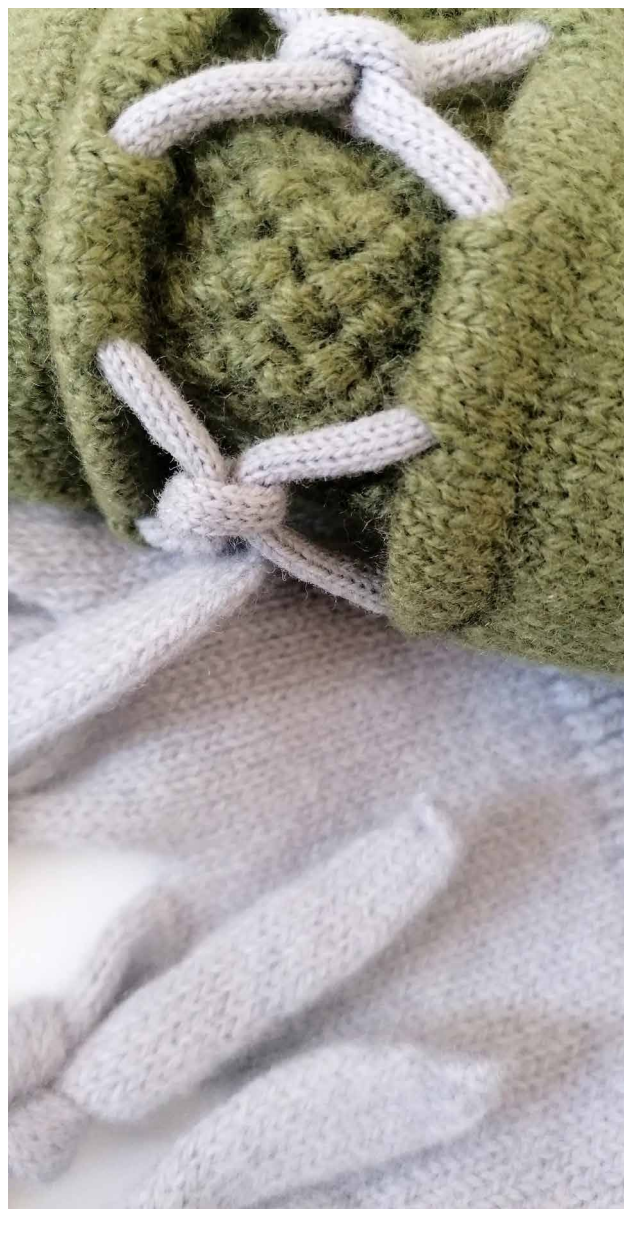
This part of the AW 26/27 trend offers a more rational and pragmatic approach to fashion and home textiles. Functionality meets designs to fit today's needs for new essentials. Elegant and comfortable, it merges sporty, urban, and casual wear in a search for movement and easy care.

PURITY

Seasonless, genderless, but feminine in its mood, a trend that gives priority to a minimalist elegance favoring investment pieces. The focus is on textures, matte finishes, and refined fibers, highlighting quiet sophistication. Items are made for discerning consumers. Versatile, light, timeless neutrals convey refinement and stability to minimalist detailed knits.

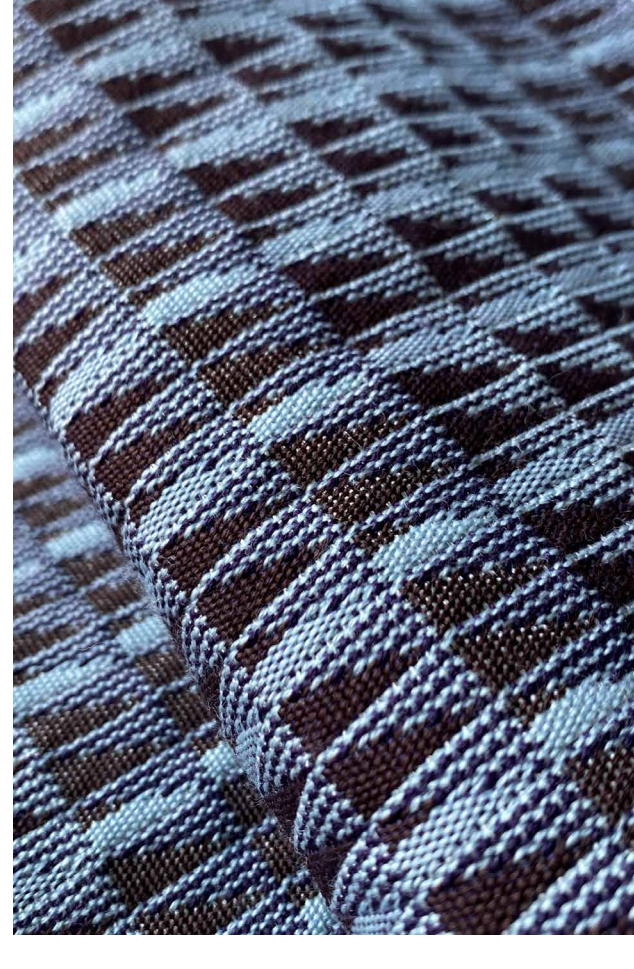
This is the part where the search for eco-friendly breathable fibers is predominant and suggests layering items adapting to moments of the day and shifts of seasons.

It is ideal for knitwear, knitted coats, and assembly of knitted separate pieces interplaying with structures, stitches, and superpositions. It is also essential for englobing interior design, accessories, and home textiles. Fashion and lifestyle cohabit, responding to stress with calm and strength.



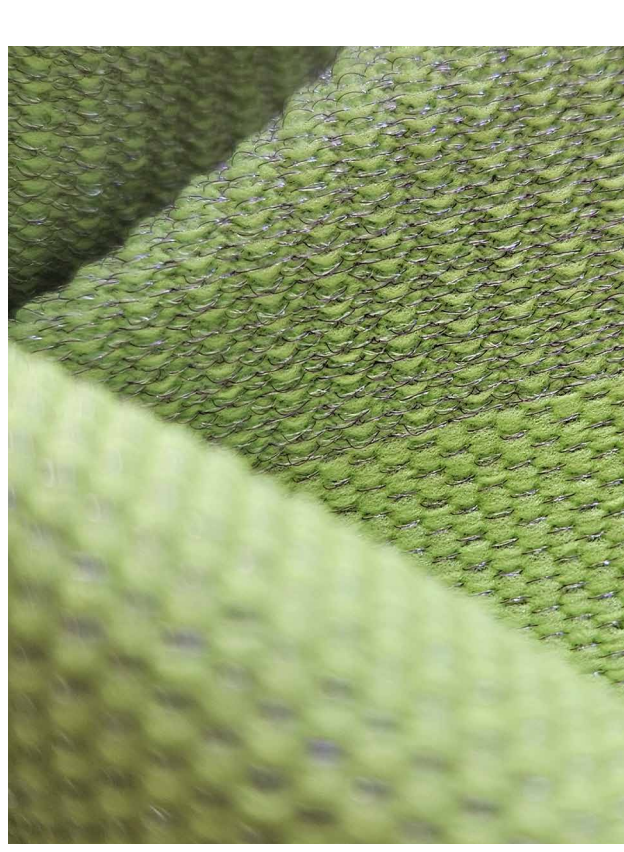
ESCAPISM

This trend is ideal for experimenting with tech fibers and adopting a more rational approach to fashion, including accessories and functional items that fit the needs of today's working generation. This eclectic fashion movement allows one to reinvent oneself, mixing tech and sport, elegance and comfort. Formality and casualwear have joined for a nonchalant, timeless trend rooted in the present; social links are an inspiring lifestyle linked with concerns for ecology and appeal for technology. This direction is resolutely urban and digital. It belongs to a city life that reinvented itself through urban sports, bridging humans together for more conviviality and mobility. Urban fashion reinvents itself with new norms.



CONNECTIVITY

shows how the rising popularity of high-tech athleisure is overtaking resale-driven sneaker culture focused on sporting and wellness communities — head-to-toe "gorpcore" looks have fizzled out. This is the newest and most avant-garde direction with a focus on telescoping and retractable structures, developing adaptive, protective and flexible fabrics that respond to dynamic environments. Iridescent, metallics or reflective finishes, tactile appeal, bonded to create unique effects. Rigid stretch and compression wear. Layered and overlapping structures.



DON'T FORGET THE TRADE EXHIBITION

SPINEXPO™ SHANGHAI

19-20-21 AUGUST 2025

WORLD EXPO EXHIBITION & CONVENTION CENTER

1099 GUOZHAN RD, PUDONG - SHANGHAI - CHINA

An extensive offer from the spinning and knitwear industry

180 exhibitors

Multiple trend zones

PREREGISTRATION IS MANDATORY

CHECK OUR WEBSITE: WWW.SPINEXPO.COM